



**Missouri's
Local
Program**
*for community
development*

COVER SHEET

(This must accompany your firm's letter of interest and does not count in the page limit)

Firm's Full Legal
Name:

HDR Engineering, Inc.

Firm Contact Name:

Andrew Potthast, P.E.

Contact Email
Address:

andrew.potthast@hdrinc.com

Firm's Mailing Address:

10450 Holmes Road, Suite 600

Kansas City, MO 64131

Work Category:

- Roadway Design
- Trails & Sidewalks
- Construction Inspection
- Traffic Engineering & TEAP
- Structures
- Environmental
- Historic Preservation
- Multimodal Planning / Systems and Facilities Design
- Transportation Planning – **NEW CATEGORY**




December 12, 2025


Ms. Ashley Buechter, PE, Local Programs Administrator
Missouri Department of Transportation Central Office - Local Programs
105 West Capitol Avenue, PO Box 270
Jefferson City, Missouri 65102
Re: Letter of Interest | LPA On-Call Professional Services


CATEGORY: MULTIMODAL PLANNING / SYSTEMS AND FACILITIES DESIGN



Dear Ms. Buechter and Members of the Selection Committee,
HDR Engineering, Inc. (HDR) has a proven history of providing a high level of client service and developing practical solutions to a wide range of transportation challenges, which is why we are eager to provide on-call multimodal planning and design services to Local Public Agencies (LPAs). Our employee-owners work hard to build trust and rapport, and this dedication has led to HDR being regarded as a trusted advisor by many of our clients.
HDR has a “Client First” focus highlighted by an overall strategic project approach and is founded on three key elements:

 **Maintaining effective communication between the LPA staff and the project team.** The primary objective of the Project Manager is to communicate challenges, decision points, and practical design solutions, which keeps the LPA involved in project development, uses time efficiently, and facilitates schedule milestones.

 **Applying context sensitive and sustainable solutions to the design process to address long-term environmental, social, and economic challenges.** HDR utilizes a multi-disciplinary project team to effectively deliver projects that preserve scenic, aesthetic, historical, and environmental resources while improving safety and mobility.

 **Providing an experienced, local staff that is accessible to our clients to provide excellent service and meet your schedule.** HDR has six offices throughout Missouri, which allows our staff to be in proximity to projects across the state. This facilitates communication and allows our team to attend project meetings and to be on site quickly to address challenges.

General Experience of Firm and Past Performance

Our multimodal planning team and Memorandum of Understanding (MOU) project managers offer expertise in rail network planning and design, feasibility studies, port infrastructure design and grant writing and administration for railroad and port-related projects. HDR has served as Missouri Department of Transportation (MoDOT)’s on-call firm for grant writing services and supported MoDOT on the successful \$81M INFRA grant to replace the I-70 Missouri River Bridge at Rocheport. We have recently supported MoDOT on the statewide Amtrak (UP) and MNA Nevada Subdivision highway-rail grade crossing studies and implementation support to enhance safety along freight and passenger rail corridors.

With the current and continually growing demands on local public agency staff, having the ability to supplement agency capabilities with the vast experience of our staff provides great value. HDR stands ready to assist whenever we are needed, regardless of contract or project scope.

HDR focuses on providing quality planning and design services and meeting project schedules. The following are examples of several projects showing specific recent relevant experience and performance across rail, freight, and ports projects.

RAIL

MoDOT, Highway-Rail Grade Crossing Safety Studies, Statewide, MO. HDR led the study to provide an independent data-driven approach for recommendations to improve the

safety of every highway crossing of the Missouri River Runner and Texas Eagle Amtrak lines, which run on the Union Pacific Railroad main lines. Between the two lines, 266 highway-rail grade crossings and four pedestrian crossings were reviewed. HDR provided recommendations for safety improvements at crossings, including conceptual design layouts and cost estimates. HDR conducted a similar study for MoDOT, covering the MNA Nevada subdivision in western Missouri. HDR is currently supporting MoDOT with supplemental services for design and implementation of improvements on the Texas Eagle route and on the MNA Nevada Subdivision. As part of implementation, HDR is coordinating with the local road authorities to attend on-site reviews and secure agreements to complete improvements.

City of Liberty, Birmingham Road Railroad Grade Separation Concept Study, MO. HDR is working with the City of Liberty on two alignments for a railroad grade separation that will eliminate a key at-grade highway-railroad grade crossing at Birmingham Road and the CPKC. HDR is preparing concept designs, as well as cost estimates that will be presented at public and stakeholder meetings. Railroad coordination is underway. This planning effort will lay the groundwork for the Liberty to apply for federal discretionary funding for design and construction.

City of Emporia, Emporia Rail Crossing Elimination Planning Study and Federal Railroad Administration (FRA) Grant Administration, Emporia, KS. HDR assisted with the preparation of the FRA Railroad Crossing Elimination grant application for a planning study at 15 highway-rail grade crossings on the BNSF Emporia Subdivision and the



project was awarded a FY 2022 grant. HDR is now working with the City of Emporia to conduct the planning study and support grant administration including quarterly reporting and reimbursement requests.

Kansas Department of Transportation (KDOT) Freight and Rail Unit, Transload Facility Site Analysis, Statewide, KS.

HDR conducted a statewide Transload Facility Site Analysis (TFSA) for the purpose of determining preferred locations for new multimodal or intermodal facilities within the state. The study emphasized sites designated either as “highway freight corridors of significance”, major state highways, Class I and Class III railroads, key intermodal (truck to rail and rail to rail) connectors, transload facilities, air cargo facilities, and navigable waterways. HDR also assisted KDOT with the development of site criteria, initiating a call for sites, evaluating over 111 responding sites, assessing the sites for readiness, developing a multi-criteria analysis screening methodology, and supporting final site selection. HDR assisted KDOT with executed project agreements for two selected sites.

Confidential Class I Railroad, Systemwide Grant

Management. As trusted advisor to a Class I Railroad, HDR is providing the railway with program management services to develop public and private strategies that identify, prioritize, and pursue public project opportunities and applicable grant funding programs in coordination with eligible public agency applicants. In this role, HDR often helps state DOTs, Local Public Agencies, and the railroad collaborate and align their objectives. HDR is preparing turnkey grant application support for various federal and state funding programs, including development of grant application narratives, benefit-cost analysis tools and evaluation, statements of work, and other project documentation.

Amtrak, Strategy, Planning and Accessibility Master Services

Agreement. This multi-year national on-call includes HDR services such as rail feasibility assessment, rail corridor planning, rail service development plans, conceptual engineering, business case development, rail operations analysis, operating and capital cost estimating, ridership and revenue forecasting, resiliency and sustainability, and outreach and engagement.

PORTS

SEMO Port, SEMO Port Double Loop Track/River Terminal, Cape Girardeau, MO. HDR assisted SEMO Port with the preparation of a successful \$19.8 million Better Utilizing Investments to Leverage Development (BUILD) grant application and has been engaged in the planning, design, permitting, NEPA clearance, construction management, and grant management of a double loop rail track to provide the capability for efficient multimodal transfer of products between unit trains and river barges. To date, the rail track and the new rail-to-barge river terminal, including the unit train unloading conveyor system, have been completed.



SEMO Port Double Loop Track/River Terminal, Cape Girardeau, MO

Port Authority of Kansas City (Port KC), Progressive Design Build, Kansas City, MO. HDR is currently partnered with Clarkson Construction Company and under contract with Port KC to deliver Port KC and the City of Kansas City, MO’s first Progressive Design Build project, the MRT Phase 1 Roadway Access. This project consists of extending North Century Ave. to the south and building a new Blue River crossing just east of I-435 by to provide access to Port KC’s 400 plus acre site south of the Blue River. The project includes a 3-unit bridge, 1194 feet in length, a new local road to maintain access to the Bayer and Evergy power plant facilities, and multiple significant water line and high voltage transmission line relocations. The project is scheduled to go to construction in early 2026 and the design team is in the final stages of developing construction documents.

Qualifications of Personnel

HDR has a local and national team with a wealth of knowledge and experience in multimodal planning and design services. The following is a brief description of the multimodal leads.

Sara Clark, PE, MOU Project Manager | Freight/Rail Planning and Grant Support.

Sara brings over 20 years of experience leading multi-discipline freight and passenger rail infrastructure projects. She specializes in feasibility studies, corridor studies, alternatives analyses, federal partnerships, and grant monitoring, compliance, and administration. She has worked with local, state, and federal clients across the U.S. to deliver strategic program recommendations, streamline project delivery, and ensure compliance with regulatory requirements. In her previous role with the FRA, Sara coordinated internal and external stakeholders to facilitate the restoration of Amtrak’s Mardi Gras Gulf Coast passenger rail service while leading multi-disciplinary teams of subject matter experts to advance over \$350 million in federal rail infrastructure investments to enhance safety and efficiency at ports, along corridors, at grade crossings, and at stations. She is currently supporting the MoDOT Highway-Rail Grade Crossing, Safety Supplement Design Projects for the MNA and Texas Eagle corridors.

Cat Dobbs, JD, Technical Lead | Grant Writing and Grant Administration.

Cat is a Senior Project Manager and federal project strategist with HDR’s Freight Rail group, offering expertise in federal rail partnerships and US DOT grant programs. She has over 17 years of experience in infrastructure development, having spent nearly 12 years with the USDOT FRA. Cat maintains expertise in all active federal grant programs including National Rail Partnership, Multimodal Project Discretionary Grant, CRISI, RCE, and BUILD, in addition to environmental evaluation processes for rail projects. Cat is a project management professional and works with a wide variety of industry stakeholders including short lines and Class I railroads, providing guidance on project development and federal partnership opportunities, and maintaining an excellent working knowledge of federal granting regulations, policies, and practices.



James W. Rice, PE (MO #2012018122), MOU Project Manager | Rail. James leads HDR's Track and Transit group in Missouri and Kansas. He is a civil engineer with 16 years of experience in a variety of areas including conceptual planning and engineering of track and civil design for transit and freight rail projects. He is experienced in coordinating the work and interface points with multiple disciplines and assisting with stakeholder coordination. James led track design for the KC Streetcar Main Street Extension mainline and VMF expansion, from the earlier conceptual planning phases through construction, and serves as Deputy Project Manager for the KC Streetcar Riverfront Extension. He has also supported the MoDOT Highway-Rail Grade Crossing Safety Studies and Supplement Design Projects for the MNA and Texas Eagle corridors.

Tony Klaumann, PE, MOU Project Manager | Rail. Tony is a Freight Railroad Project Manager for HDR with over 15 years of civil engineering design, railroad operations management, and project management experience. Prior to joining HDR, Tony served as a railroad field operations manager for a Class I railroad in the U.S. Tony's expertise allows him to prioritize, organize, and oversee railroad infrastructure repairs; develop capital programs for railroad infrastructure and other assets; oversee new construction activities; conduct emergency repair work; and interpret local and federal regulations. He uses his experience to support HDR's public and private clients in many different areas, such as passenger and freight railroad operations/planning, infrastructure design, feasibility studies, process improvement, and coordination. Tony had key roles on the MoDOT Highway-Rail Grade Crossing Safety Studies for the Amtrak and MNA corridors.

Kevin Keller, PG, CGP, Technical Lead | Rail. Kevin is HDR's Director of Intermodal Transportation Planning and has managed the planning, permitting, engineering design, and evaluations of new rail alignments, transportation corridors, new maintenance facilities, new structures, logistics planning, and fleet management. Kevin has managed public benefits analyses, economic development studies, industrial development studies, feasibility studies, and environmental assessments for numerous federal, state, and private transportation clients.


Keith Bucklew, SCPro, Technical Lead | Freight. Keith is the Freight Planning Practice Leader for HDR. Over the past nine years he has led the development of over 30 freight mobility plans for states and Metropolitan Planning Organizations, including serving as project manager for the MoDOT State Freight Plan and numerous rail and truck parking plans.

Joe Dack, Technical Lead | Freight. Joe has held a variety of operational and project management roles in the transport and logistics industry across the retail, air cargo, mail and parcel, military, multi-modal and public sectors over his 30-year career. His work has considered policies and plans enabling efficient delivery of goods and services while reducing the impact of freight activity (emissions, crashes, curbside demand, etc.) upon the built environment. He has a unique understanding of supply chains including specific expertise in port cargo movements and ship provisioning, along with use of rail and barge for waste transport.

Hardik Gajjar, ENV SP, Technical Lead | Ports. Hardik has more than 15 years of experience leading master planning, terminal planning and land use studies for ports, terminal operators, railroads and trucking facility projects worldwide. His work on dozens of projects has assisted ports in identifying improvements to existing site layouts and in developing concepts and alternatives to meet forecasted demand.

Familiarity/Capability

MoDOT and HDR have partnered on many projects over the last 28 years. We have a history of delivering quality work on time and within the project budget, and our consultant ratings are always near the top of the scoring criteria. These scores are proof of our performance and evidence of our commitment to MoDOT. HDR's multimodal planning staff have delivered freight and other multimodal planning studies for MoDOT and other agencies, giving us familiarity with policies as well as federal requirements.



HDR has secured \$4.8B of federal discretionary grant funding for clients over the last 17 years. Our team has the demonstrated ability to effectively match project details with grant requirements to aid our clients in advancing priority projects.

Accessibility

HDR has over 375 employees in the state of Missouri with offices in Kansas City, St. Louis, Springfield, Columbia, and Forsyth, which gives us the flexibility to respond quickly. Although our Missouri transportation staff is focused primarily in Kansas City, St. Louis and Springfield, we have worked on transportation projects in all MoDOT districts and have proven our responsiveness and availability to the Missouri's Local Program numerous times over our long-shared history. Our offices also work seamlessly together through online collaboration tools including ProjectWise and Microsoft Teams to allow us to provide the staff and expertise needed. This is especially beneficial to providing you the services needed for on-call services that are typically short in duration and unexpected.

HDR Is The Right Choice. HDR values our relationship with MoDOT and appreciates the opportunity to submit our Letter of Interest for LPA Multimodal Planning / Systems and Facilities Design services. Our team members have the experience and availability to successfully perform any work assignments that are deemed necessary and appropriate for on-call services. We have proven our capabilities to bring the right expertise and resources to your projects regardless of technical, resource and schedule requirements. We look forward to the opportunity to work with all of Missouri's Local Public Agencies as an on-call partner.

Sincerely,

HDR ENGINEERING, INC.

Cory Imhoff, PE, SVP
MO/KS Area Manager

Andrew Potthast, PE, VP
Master Contract Manager

We are proud to call Missouri our home.

At HDR Engineering, Inc. (HDR), we are a part of every community where we work, especially here in Missouri. We know the local business, culture, requirements, and regulations in Missouri so we can anticipate challenges and quickly address issues to make the experience seamless for you.

Local Commitment, Regional Focus. With over 375 employees in Missouri, HDR has served the state and many local communities since 1993. Our experience and team’s knowledge will result in quick mobilization of the necessary technical resources supported by our experience and proven track record with Missouri Department of Transportation (MoDOT) staff and understanding of your processes and requirements.

Six Missouri Offices

With offices throughout the state of Missouri, our team has worked on projects in all MoDOT districts, including some of the state’s most significant and intricate infrastructure projects in recent years.

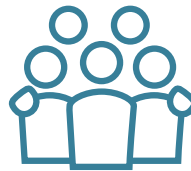
- St. Louis
- Kansas City - Holmes Rd.
- Kansas City - Main St.
- Springfield
- Forsyth
- Columbia



While HDR’s services have evolved to meet increasingly complex challenges, one thing that hasn’t changed is commitment to the values upon which HDR was founded. These values include respect, integrity, empowerment, innovation, teamwork, and responsibility. HDR’s mission is to be a superior professional firm known for vision, value, and service to our clients, our communities, and employees. Whether a project challenge is large or small, complicated or straightforward, **we have the depth of resources and expertise to help you achieve results.**

Ownership in Our Success

Your success is our success. HDR is 100% employee owned—it’s a unique part of our culture that instills passion and responsibility. All employees from our administrative assistants to the CEO can purchase stock based on 401(k) contributions. We come to work each day knowing that what we do benefits our clients as well as the value of our company.



Missouri Offices

Kansas City:

10450 Holmes Road, Suite 600
Kansas City, MO 64131 | 816.360.2700

4801 Main Street, Suite 450
Kansas City, MO 64112 | 913.329.9900

St. Louis:

1001 Highlands Plaza Drive, Suite 200
St. Louis, MO 63110 | 314.425.8300

Columbia:

3610 Buttonwood Drive, Suite 200
Columbia, MO 65201 | 573.886.8931

Springfield:

2144 East Republic Road, Suite B203
Springfield, MO 65804 | 417.351.6500

Forsyth:

187 East David, PO Box 969
Forsyth, MO 65653 | 417.546.3218

Contacts

Cory Imhoff, PE, SVP

MO/KS Area Manager
816.360.2702

Chad Hall, PE, VP

MO/KS Transportation Business Group Director
816.360.2702

Andrew Potthast, PE, VP

St. Louis Office Principal
314.425.8314

Jason Haynes, PE, PTOE

Springfield Office Principal
417.351.6517

Scott Heavin, PE, AVP

Business Development Leader
816.360.2798

2025 ENR Rankings

HDR is consistently ranked among the top engineering firms by leading industry publications, including Engineering News-Record (ENR), which has ranked HDR in the Top 50 design firms since 1967, and in 2025 ranked us at **number 6** of the Top 500 Design Firms.

- No. 5** Top 20 in Transportation
- No. 2** Top 25 in Bridges
- No. 5** Top 25 in Highways

- No. 5** Top 25 in Mass Transit & Rail
- No. 13** Top 25 in Airports
- No. 20** Top 200 Environmental Firms





Aviation

HDR has a staff of over 160 aviation professionals serving over 150 airports worldwide. Several of these airports are right here in Missouri, and HDR staff has worked with MoDOT aviation staff to build and maintain these vital economic assets.



Building Engineering Services

BES collaborates with all business groups and market sectors across HDR. We understand the performance expectations of MoDOT's building and site portfolio and we bring a proven, Missouri-based team ready to respond across all districts.



Bridges and Structures

HDR's bridge staff capabilities are well known to MoDOT. Our experience includes not only highway bridges but also historic bridges, movable bridges, major river crossings, pedestrian, and directional interchange structures.



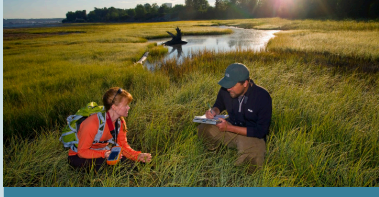
Construction Inspection

Our skilled construction engineering and inspection staff members are available to supplement MoDOT construction staff and support delivery methods, and complete projects in accordance with approved contract documents.



Electric Vehicles & Infrastructure

HDR's experience ranges from environmental analysis and planning to permitting. Our professionals provide expertise in air quality, endangered species, cultural resources, noise and acoustics, and more.



Environmental Services

HDR's experience ranges from environmental analysis and planning to permitting. Our professionals provide expertise in air quality, endangered species and wetlands, cultural resources, noise and acoustics, and more.



Freight Rail

HDR freight rail staff have existing relationships and project experience with all Class I rail companies including BNSF, Union Pacific, CPKC, and Norfolk Southern. We offer expertise to liaise with the rail companies and with the MoDOT Rail Group.



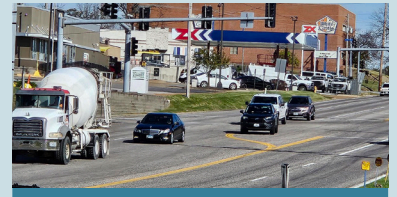
Funding & Grant Services

Since 2009, USDOT has awarded almost \$14.5 billion in federal grants through various programs (i.e., BUILD, INFRA, CRISI, and PORT). HDR has supported more than 95 successful grant applications under these programs.



Highways & Roads

Our Missouri roadway staff is familiar with MoDOT requirements and can provide you with construction plans within the most challenging time frames. We also collaborate with other disciplines within our office when the need arises.



Right of Way Acquisition

Nationwide, we have over 200 real estate and Right of Way professionals, including our team of approved MoDOT Negotiators. Our staff is familiar with MoDOT Right of Way policies, federal laws and regulations, including the Uniform Act.



Strategic Communications

Our Strategic Communications practice brings creative strategists, public relations professionals, graphic designers, and writers together to create powerful connections between organizations and the people they serve.



Survey

We provide a full range of services including LiDAR, GIS mapping, construction progress and documentation, infrastructure surveying, project mapping and 3-D spatial monitoring.



Traffic Analysis & Engineering

HDR's traffic staff have the expertise to support multimodal operational/safety analysis, traffic design, signal timing, transportation planning at any scale (including statewide), and basic research.



Transportation Technology

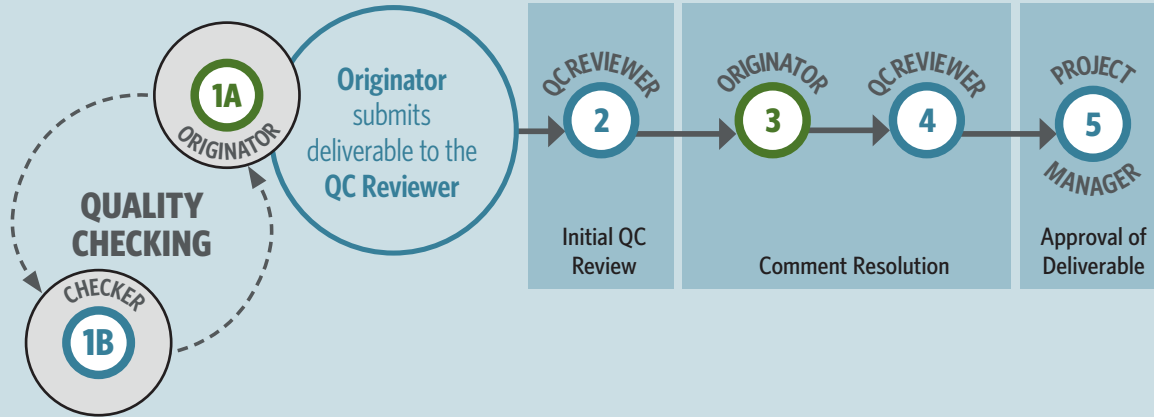
HDR staff are specialists in Intelligent Transportation System Technology and other emerging technologies. Technology options are ever-changing, and we work to stay on top of and advance new developments.



Value Engineering

Our services include Risk Assessment, Alternative Performance Analysis, Decision Analysis, and Cost Estimate Validation. Our recent MoDOT project experience ranges from large to small transportation projects.

Quality Assurance and Control



HDR requires a Quality Assurance/Quality Control plan for every project. We provide the same high-quality QA/QC approach during each phase of a project, and for each level of documentation required to complete the construction records. The project records will go through a review by a project quality manager and/or construction engineer who is familiar with the DOT procedures, prior to delivery throughout the life cycle of the project.



Safety at HDR

As an employee-owned company, nothing is more important to us than the health and safety of our employees and partners. Our goal is always that everyone goes home safe.

We support our safety culture through a comprehensive health and safety program that has received national recognition for excellence. It includes extensive mandatory safety training for all employees and is supported by a team of certified safety professionals who help project teams as they navigate the sometimes complex web of local and national health and safety regulations.

Our people-centered safety culture has enabled us to maintain one of the best safety records in the industry. Our OSHA statistics are consistently lower (0.2 vs. 0.5 for recordable incidents and 0.12 vs 0.3 for lost days) than the industry average for our NAICS code (5413-Architectural, Engineering, and Related Services).

Effective Project Management

HDR's practice is to generate a Project Management Plan (PMP) for every project. Our project management plan (PMP) is customized based on the needs of the project and is derived from proven HDR strategies. The PMP provides guidance to the internal team and subconsultants engaged throughout the life of the program, from inception through closeout. The PMP serves as a formal guide for how the PM has planned to evaluate, prioritize, document, review, approve, and implement the project components.

The PMP defines project resources and includes client contact information, project description, scope of work, deliverables, budget, administration procedures, and filing requirements. It also covers communication methods, such as file storage and sharing and documentation. The PMP



includes a project-specific Quality Management Plan and describes how the team will handle safety, which helps maintain high levels of quality and a safe work environment.

Workforce Diversity

Together, we build on each other's life experiences and perspectives to make great things possible every day.

We believe a variety of perspectives makes our company stronger. Our work environment includes employees of different generations, genders, races, nationalities, sexual orientations, abilities, religions, and ethnicities who work together to deliver one-of-a-kind services to our clients.

HDR's award-winning National Supplier Diversity Program is a corporate commitment to invest in the health and stability of our communities. The program promotes and encourages competitive subcontracting opportunities by embracing partnering relationships with the diverse socioeconomic and small business community through outreach, qualification, training, education, mentoring, and utilization.



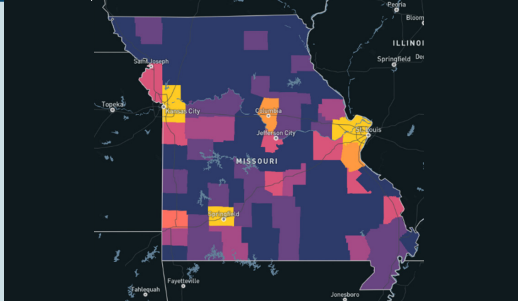
Green Hills Road Improvements | Kansas City District LPA Project

This section on the Green Hills corridor east of Lake Waukomis was expanded from a two-lane rural section to a multimodal three-lane roadway with turn lanes, 5' sidewalk, 10' shared-use path, curb and gutter, street and pedestrian lighting, and an enclosed storm sewer system with water quality treatment BMPs. This project also includes new 24" water transmission and 8" distribution water mains. Green Hills received federal funding and was approved through the MoDOT LPA process and procedures. Some of the interesting and challenging aspects of the project included the roadway and adjacent land stormwater management and design, connections to area assets including existing schools, neighborhoods, parks, and the Line Creek Trail. The improvements also included a neighborhood drainage component, as existing open flow through residential back yards were converted to an enclosed system, allowing for flatter and more enjoyable back yards for seven parcels.



Kansas City Streetcar Mainstreet Extension Traffic Signals, Signage, and Pavement Markings | City of Kansas City, MO

HDR served as the lead design firm for the KC Streetcar Main Street Extension, guiding the project from early planning through final design in less than two years from initiating the Alternatives Analysis. The 3.5-mile extension expands the streetcar line from Union Station south along Main Street, continuing past the Country Club Plaza and terminating at the UMKC campus at 51st Street. Construction was completed in October 2025. Project improvements included the replacement of traffic signals at all 19 existing signalized intersections, along with new corridor-wide signage and pavement markings. HDR brought the entire corridor into full ADA compliance by incorporating new accessible ramps, accessible pathways, and accessible pedestrian signals. To support efficient operations, HDR developed a custom pavement marking and signage plan establishing transit-only lanes in the existing outside lanes. These exclusive lanes prioritize streetcar movements, improving safety, reliability, and overall operational performance.



MoDOT Vulnerable Road Users (VRU) Safety Study | Statewide, MO

This project updated MoDOT's first vulnerable road user (VRU) safety assessment from 2023 as part of the State's 2025 Strategic Highway Safety Plan. The update provided a major overhaul of the existing plan, including new data analysis, agency consultations, strategies, and a program of projects. HDR conducted an innovative systemic risk analysis and developed area-based Safety Performance Functions using forthcoming HSM 2nd Edition methodology. A statewide systemic risk assessment was completed, and a High-Injury Network (HIN) was created. The final deliverable was a comprehensive safety plan for pedestrians and cyclists. This plan identified a program of projects and included a toolbox of strategies, countermeasures, and actions for state and local agencies. These efforts aimed to improve safety and save vulnerable road users' lives on Missouri roads.



Jumping Branch Trail and Pedestrian Bridge | City of Riverside, MO

HDR provided engineering services for the bridge layout, final design, and specifications for 2/3 mile of trail. The project included two pedestrian bridge designs, permitting work with field investigation, H&H work to determine bridge opening, and shop drawing review. The new concrete trail is 10' wide along the entire length of the trail through a previously wooded and partially cleared area located just north of City Hall in Riverside. The trail connects pedestrians on the north side of Riverside to other areas in the community. The south pedestrian bridge is a 140' long prefabricated steel truss bridge with a 10-foot-wide concrete deck. The north low-water crossing is a single-span concrete girder bridge with a wider deck surface. Both bridges are founded on driven steel piling.



Jefferson Street Reconstruction and ADA Compliance | City of Washington, MO

HDR is responsible for the rehabilitation of a one-mile section of Jefferson Street from Fifth Street to Route 100. The project involves full width cold mill and installation of a new two-inch asphalt surface along the full corridor, reconstruction of existing curbs and sidewalks, expansion of the current sidewalk network with the construction of a new segment between Wainwright Street and Route 100, and modifications to two signalized intersections. HDR worked with the City to streamline their right-of-way documentation requirements for TCE's, which helped expedite the acquisition process for 56 impacted parcels. With their local knowledge of the City and its residents, BFA also assisted in tracking and getting favorable results during the acquisition phase.