



# Exceeding Expectations

## Full-Service Firm

Garver provides consultant services for bridge, traffic, roadway, environmental, architectural, survey, and construction engineering and inspection projects.

## Proven Excellence

We have the experience and knowledge to provide you with tailor-made engineering solutions. Our designs are based on decades of proven excellence.

## Smart Project Solutions

When it comes down to it, we are more than just engineers, planners, and architects. We plan, survey, design, manage construction, and even operate facilities. We do not just provide project solutions. We provide smart project solutions.





*Garver has designed over \$2.1 billion in transportation projects in the past three years.*

# The Road to Completion

With 100 years of experience, Garver knows how to take a project from concept to reality with innovative design that minimizes costs and construction schedules, while providing an efficient facility with a longer service life. The Garver Team optimizes in-house resources to successfully implement each phase of your project from planning to design through construction.

## Structures

- Long and short-span structures (steel and concrete)
- Bridge inspection, rehabilitation, widening, and seismic retrofits
- Sound walls and retaining walls
- Hydraulic and grade separation structures
- Bridge/culvert hydraulic design
- Bridge scour analysis and evaluation
- Bridge scour and stream instability countermeasure design
- One dimensional (1D) and two dimensional (2D) hydraulic modeling
- FEMA studies
- CLOMR/LOMR applications
- Accelerated bridge construction (ABC)

## Trails and Sidewalks

- Trails and bikeways
- Combined-use facilities
- Pedestrian/bicycle bridges and underpasses
- ADA sidewalks and ADA wheelchair ramps
- Safe Routes to School

## Roadways

- Alignment studies
- Local roads and streets design
- Interstate, freeway, and highway design
- Street enhancements
- Interchange design
- Pavement evaluation and rehabilitation
- Intersection and roundabout design
- Storm sewer design
- Open channel and median drainage design

## Traffic Engineering

- Traffic Studies
- Safety Studies
- Traffic forecasting
- Signal design and timings
- Signing plans
- Intersection and roundabout analysis
- Multimodal studies and design
- Intelligent transportation systems



**Roads & Bridges  
Go-To List**  
for Road & Highway  
Design Firms



**Top 500 Design  
Firms Nationwide**  
*Engineering News-Record*



**2019 Best Firms  
To Work For**  
*Zweig Group*

# GARVER IS ABOUT SUCCESS.

We provide long-lasting infrastructure, meeting budgets, and schedules.

## Structures

Garver has the expertise to provide a full range of structural design services for new and existing bridges, including steel and concrete superstructures, substructures, bridge rehabilitation, retaining walls, and pedestrian structures. In addition, we offer hydrology and hydraulic analysis, bridge inspection, load rating reports, and seismic design.

## Roadways

Garver's roadway engineers consider all factors in developing practical and cost-effective design solutions for new location, relocation, reconstruction, or improvement projects. Our experience includes concept development, alternative analysis, and design for rehabilitation (milling/filling and overlays), widening; ADA facilities and sidewalks; new interchanges and interchange conversions; pavement design; condition analysis; horizontal and vertical alignment improvements; drainage improvements; clear zone safety improvements; and development of maintenance of traffic and construction staging plans.

## Traffic Engineering

Garver's Traffic Team has the experience and skill diversity to tackle all types of projects from complex traffic forecasting and simulation (using VISSIM and Synchro) to pedestrian access and connectivity. We also design Intelligent Transportation Systems (ITS), signing plans, traffic signals, and intersection improvements. With our dedicated Traffic Team, we provide technical expertise and develop context-sensitive solutions to complex projects focusing on the safety of the traveling public.

## Trails and Sidewalks

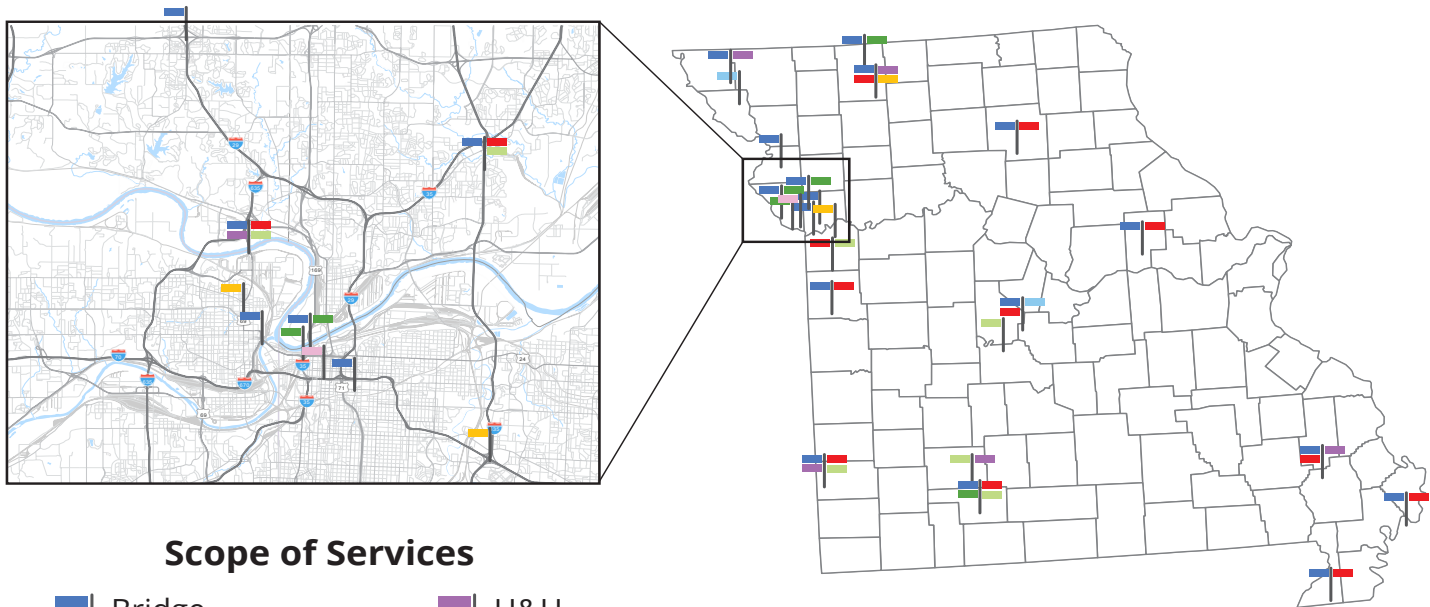
As part of our commitment to healthy and safe communities, Garver recognizes the importance of pedestrian-friendly environments. Our designs incorporate sidewalks, trails, bikeways, Safe Routes to School projects, ADA-compliant wheelchair ramps, signals, and pedestrian/bicycle bridges.

“The City of Tulsa has worked with Garver on multiple Transportation projects, including arterial roadway, non-arterial roadway and bridge rehabilitation. Garver works closely with the City of Tulsa to maintain the project schedule, scope and budget. When working with Garver, the City of Tulsa can expect **nothing but the best.**”

Brook Caviness, PE  
Senior Engineer, City of Tulsa, OK



# GARVER IS COMMITTED to supporting Missouri Communities across the state.



### Scope of Services

- |                   |          |
|-------------------|----------|
| Bridge            | H&H      |
| Bridge Inspection | Planning |
| Construction      | Roadway  |
| Environmental     | Traffic  |



**FRANK (BLAKE) BLAKEMORE, PE**  
*Senior Project Manager, Structures*  
LPA Certified  
816-849-2002 (office)  
816-506-7426 (mobile)  
FPBlakemore@GarverUSA.com



**Charles (CHIP) TOUZINSKY, III, PE, ENV SP**  
*Senior Project Manager, Roadway/Trails & Sidewalks*  
LPA Certified  
913-696-9755 (office)  
816-308-9141 (mobile)  
CETouzinsky@GarverUSA.com



**MIKE SPAYD, PE, PTOE**  
*Project Manager, Traffic/TEAP*  
LPA Certified  
314-797-7206 (office)  
314-502-6009 (mobile)  
MLSpayd@GarverUSA.com

#### KANSAS CITY, MO OFFICE:

7410 NW Tiffany Springs Pkwy,  
Suite 200  
Kansas City, MO 64153

#### ST. LOUIS, MO OFFICE:

7777 Bonhomme Ave.  
Suite 1800  
Clayton, MO 63105



Garver is a multi-disciplined firm committed to quality in our designs, integrity in our relationships, and trust built through decades of exceptional attention to detail.