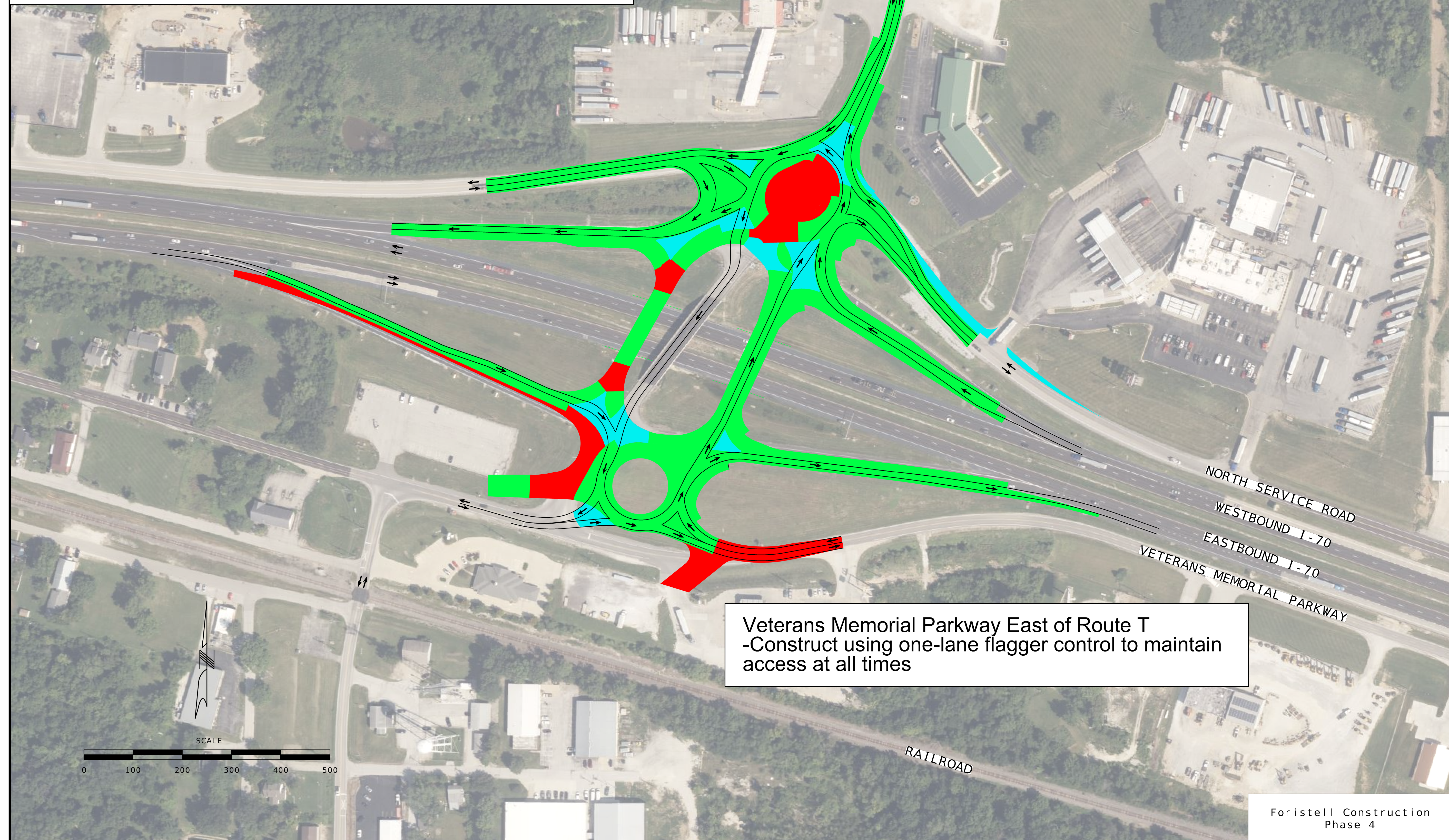


Phase 4 - Summer 2026

Roundabouts function together  
 Northbound traffic utilizes eastern bridge  
 Southbound traffic utilizes existing bridge  
 Roundabouts used to manage traffic  
 Construct pavement and Veterans Memorial Parkway connection

TRAFFIC CONTROL LEGEND	
<span style="display:inline-block; width:20px; height:10px; background-color:red;"></span>	STAGE CONSTRUCTION
<span style="display:inline-block; width:20px; height:10px; background-color:cyan;"></span>	TEMPORARY PAVEMENT
<span style="display:inline-block; width:20px; height:10px; background-color:lime;"></span>	COMPLETED CONSTRUCTION

DATE PREPARED 6/18/2026	
ROUTE I - 70	STATE MO
DISTRICT SL	SHEET NO. C01-000
COUNTY St. Charles	
JOB NO. JST0020	
CONTRACT ID.	
PROJECT NO.	
BRIDGE NO. BRIDGE	



Veterans Memorial Parkway East of Route T  
 -Construct using one-lane flagger control to maintain access at all times

DATE	DESCRIPTION
REV1/DATE	REVISION/REMARKS
REV2/DATE	REVISION/REMARKS
REV3/DATE	REVISION/REMARKS
REV4/DATE	REVISION/REMARKS
REV5/DATE	REVISION/REMARKS
REV6/DATE	REVISION/REMARKS
REV7/DATE	REVISION/REMARKS

MISSOURI HIGHWAYS AND TRANSPORTATION COMMISSION

105 WEST CAPITOL  
 JEFFERSON CITY, MO 65102  
 1-888-ASK-MODOT (1-888-275-6636)

211 N. BROADWAY STE. 2915  
 ST. LOUIS, MO 63102  
 CERTIFICATE OF AUTHORITY  
 NO. 001270

601 HONOR ST. SUITE 201 - JEFFERSON CITY, MO 65101  
 PHONE 872-633-3181  
 CERTIFICATE OF AUTHORITY  
 NO. 001270

Foristell Construction  
 Phase 4