

## Route P and Koch Road Intersection Improvement Project

### What's the problem?

According to a MoDOT five-year traffic study conducted from 2015-2020, 37 crashes occurred at the Route P and Koch Road intersection. Of those 37 crashes, 57% were rear end collisions and 8% of the crashes were left turn right angle "T-bone" collisions.

Traffic on Koch Road has grown to the point that the Route P and Koch Road intersection warrants an improvement to provide safer, more efficient access in and out for motorists. The MoDOT traffic study concludes that either a roundabout or traffic signal being needed for the intersection. Residents and the city of O'Fallon have encouraged MoDOT to reduce the speed limit on the eastern portion of this highway.

### What could the intersection look like?

Between the two options, MoDOT proposes construction of a roundabout at Koch Road. Roundabouts have been proven to virtually eliminate right-angle "T-bone" crashes that historically lead to fatalities and severe injuries. A roundabout can help with slowing traffic, while still maintaining better access from the side street. A 2001 Insurance Institute for Highway Safety (IIHS) study showed that roundabouts reduced crashes and injuries. The study showed a 38% reduction for all crash severities combined and 76% for all injury crashes.

**The reductions in the number of fatal and incapacitating injury crashes were estimated at about 90% compared to intersections with either a signal or stop sign.**

### When will this be done?

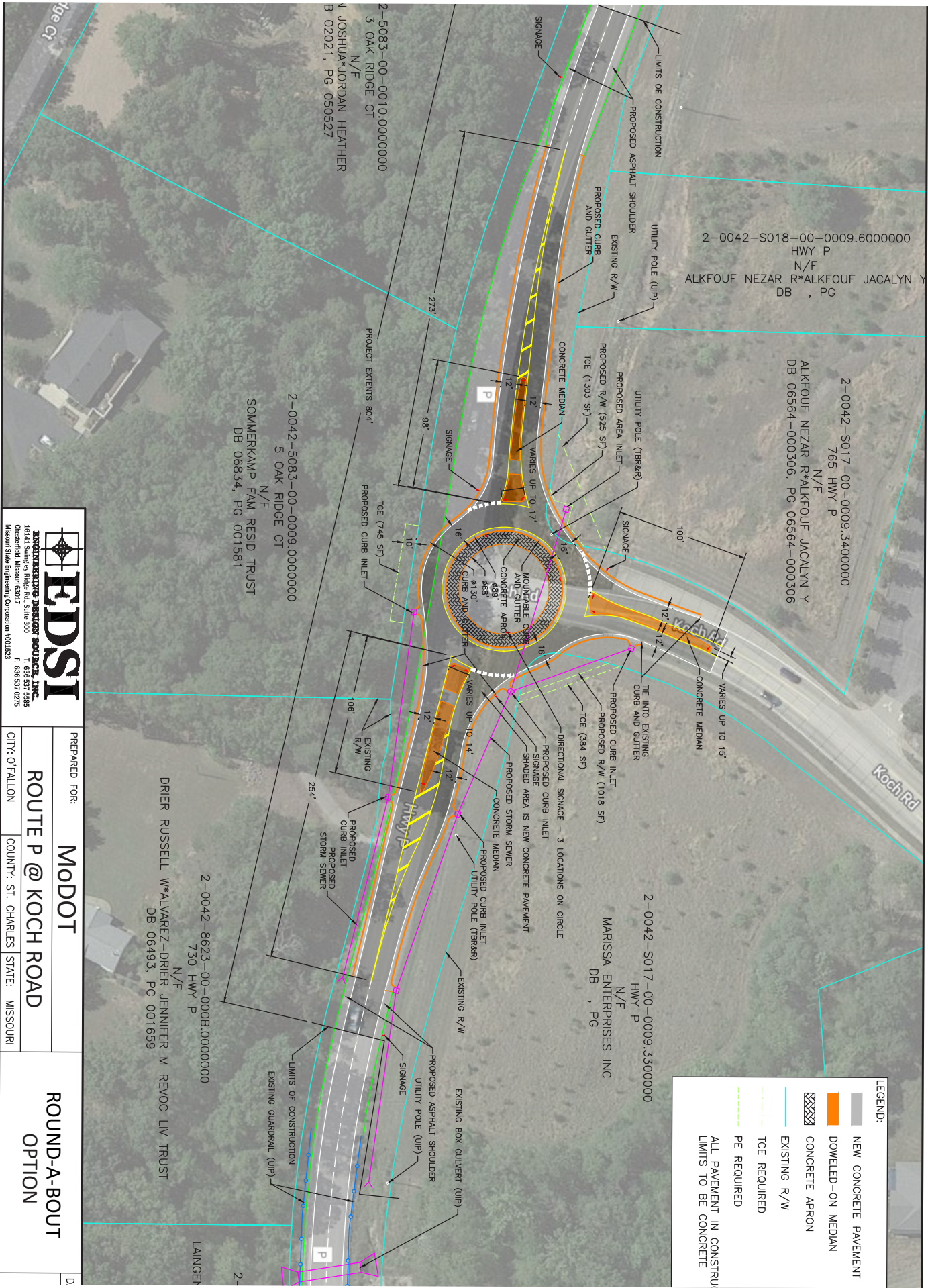
MoDOT received Congestion Mitigation and Air Quality (CMAQ) funding from the Federal Highway Administration for this project. The project is currently funded for construction in MoDOT's fiscal year 2027 (begins 7/1/2026). Preliminary design is anticipated to begin in early 2025.

### Who can I contact if I have questions?

**Andy Tuerck, P.E.**  
**MoDOT St. Charles County Area Engineer**  
314-453-5046 (Office)  
[Andrew.Tuerck@modot.mo.gov](mailto:Andrew.Tuerck@modot.mo.gov)

**Michael Blattner, P.E.**  
**MoDOT St. Charles County Project Manager**  
314-453-1751 (Office)  
[Michael.Blattner@modot.mo.gov](mailto:Michael.Blattner@modot.mo.gov)

**Jack Wang, M.A.**  
**MoDOT St. Louis District - Communications**  
314-648-9783 (Mobile)  
[Jack.Wang@modot.mo.gov](mailto:Jack.Wang@modot.mo.gov)



LEGEND:

- NEW CONCRETE PAVEMENT
- DOWELED-ON MEDIAN
- CONCRETE APRON
- EXISTING R/W
- TCE REQUIRED
- PE REQUIRED
- ALL PAVEMENT IN CONSTRUCTION LIMITS TO BE CONCRETE



ENGINEERING DESIGN SERVICES, INC.  
16144 Swinley Ridge Rd, Suite 300  
Chesterfield, Missouri 63017  
T. 636 537 5595  
F. 636 537 0275  
Missouri State Engineering Corporation #001523

PREPARED FOR:

MODOT

ROUTE P @ KOCH ROAD

ROUND-A-BOUT  
OPTION

CITY: O'FALLON

COUNTY: ST. CHARLES STATE: MISSOURI