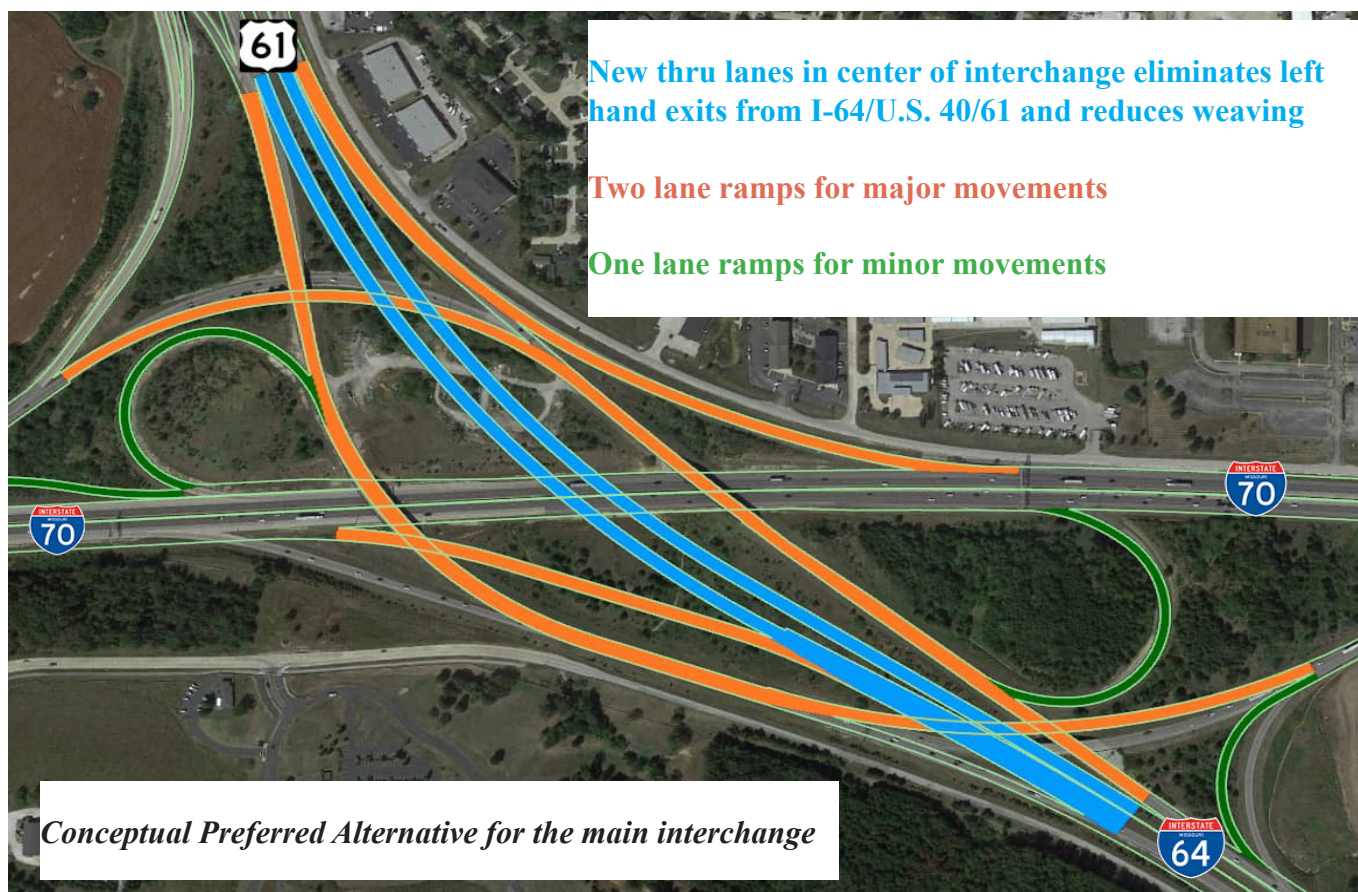




MoDOT FACT SHEET

I-70/I-64/U.S. 40/61 Interchange Project Open House Public Meeting



What is the current problem?

Motorists experience significant delays and traffic backups navigating this interchange during peak traffic periods. Specifically, westbound I-70 and westbound I-64 experience high levels of traffic congestion during the afternoon rush hour approaching and traveling through the interchange and extending as far west as Wentzville Parkway on I-70. In addition, the current interchange design is outdated as I-70 traffic increases and the western area of St. Charles County has grown exponentially in the last 20 years.

Why is this project needed?

The I-70/I-64 interchange serves a large amount of traffic volume daily, with additional growth anticipated in the future. Currently, approximately 75,000 vehicles use I-64 south of the interchange daily, while U.S. 61 carries over 60,000 per day. As both a major east-west interstate of national importance, and a commuter route connecting western St. Charles County to the rest of the St. Louis region, I-70 serves 85,000-90,000 vehicles per day. A large percentage of existing and future traffic includes tractor trailers, lending to the importance the interchange with respect to freight movement.

What will this project address?

Engineers are looking at addressing safety, roadway capacity, corridor design, and the movement of goods and services given the number of tractor trailers using this interchange for interstate commerce.

Where are we now?

The team analyzed the current interchange and during the preliminary design phase came up with over 12 potential designs. With input from a public survey conducted in January 2022, the team narrowed down the designs to a conceptual preferred alternative.

Project Timeline

- Conceptual Design- Summer 2022
- Preliminary Design/Access Justification Report(AJR), Environmental- Summer 2022-Summer 2023
- Contracting and Design-(Estimated summer 2023 through 2025)
- Construction- (Estimated 2025-2027)
- \$122 million projected estimate

Questions, contact:



Andy Tuerck, MoDOT St. Charles County Area Engineer
314-453-5046
andrew.tuerck@modot.mo.gov



Alvin Nieves-Rosario, MoDOT Transportation Project Manager
314-453-1839
alvin.nieves-rosario@modot.mo.gov



Jack Wang, MoDOT St. Charles County Senior Communications Specialist
314-453-1814
jack.wang@modot.mo.gov

Visit our project website online using the QR code or go to:

www.modot.org/i-64i-70route-61-interchange

