



**CORRUGATED METALLIC-COATED STEEL CULVERT PIPE,
PIPE-ARCHES AND END SECTIONS
FIELD SECTION 1020 TABLE 1
QUALIFIED BRANDS AND MANUFACTURERS OF
GALVANIZED (ZINC-COATED) STEEL SHEET**

The galvanized (zinc-coated) sheet manufacturers listed below have on file a qualified Sheet Manufacturer's Certified Analysis and Guarantee, for the brand shown.

California Steel Industries, Inc.
14000 San Bernardino Avenue
PO Box 5080
Fontana, CA 92335

CSI
CALIFORNIA STEEL INDUSTRIES INC.
GALVANIZED SHEET
CULVERT STOCK
MADE IN U.S.A.

Cleveland-Cliffs
Dearborn, MI
Middleton, OH
(4/95)



Granite City Steel
Granite City, IL
(12/99)

Granite City Steel
Division of
National Steel Corporation

Gulf States Steel Company
Gadsden, AL



Inland Steel Company
Chicago, IL



Jones and Laughlin Steel Corp.
Pittsburgh, PA



**CORRUGATED METALLIC-COATED STEEL CULVERT PIPE,
PIPE-ARCHES AND END SECTIONS
FIELD SECTION 1020 TABLE 1 Continued
QUALIFIED BRANDS AND MANUFACTURERS OF
GALVANIZED (ZINC-COATED) STEEL SHEET**

LTV Steel Company
Cleveland, OH



Midwest Steel Division
National Steel Corporation
Portage, IN



National Material Company, LLC
East Chicago, IN
(6/16)



Nucor Steel
Blytheville, AR
(8/09)

NUCOR-AR



CONSTRUCTION & MATERIALS

**CORRUGATED METALLIC-COATED STEEL CULVERT PIPE,
PIPE-ARCHES AND END SECTIONS
FIELD SECTION 1020 TABLE 1 Continued
QUALIFIED BRANDS AND MANUFACTURERS OF
GALVANIZED (ZINC-COATED) STEEL SHEET**

Nucor Steel
Huger, SC
(5/27)

NUCOR, SC

Republic Steel Corporation
Cleveland, OH



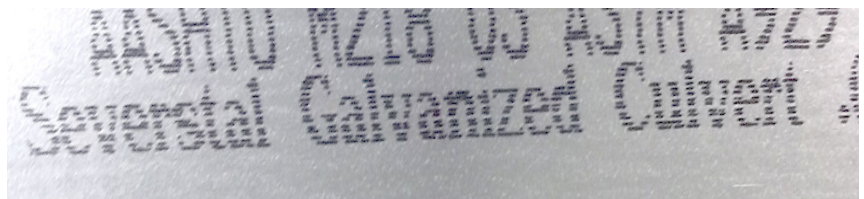
RG Steel Warren LLC
Warren, OH



RG Steel Wheeling LLC
Wheeling, WV
(2/05)



Severstal Steel
Columbus, OH
(10/13)



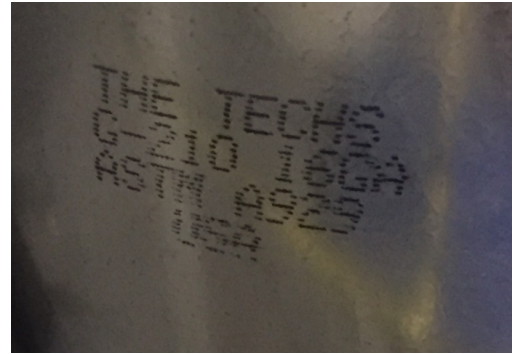
Steel Dynamics
Butler, IN
(7/01)



CONSTRUCTION & MATERIALS

**CORRUGATED METALLIC-COATED STEEL CULVERT PIPE,
PIPE-ARCHES AND END SECTIONS
FIELD SECTION 1020 TABLE 1 Continued
QUALIFIED BRANDS AND MANUFACTURERS OF
GALVANIZED (ZINC-COATED) STEEL SHEET**

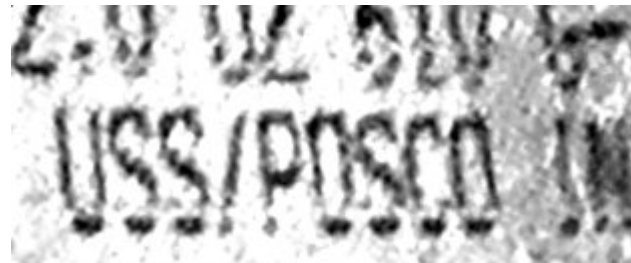
The Techs, A Division of Steel Dynamics, Inc.
Turtle Creek, PA
(1/15)



U.S. Steel Corporation
Pittsburgh, PA



USS/POSCO
Pittsburg, CA
(8/16)



Worthington Steel
Delta, OH
(7/97)



CONSTRUCTION & MATERIALS