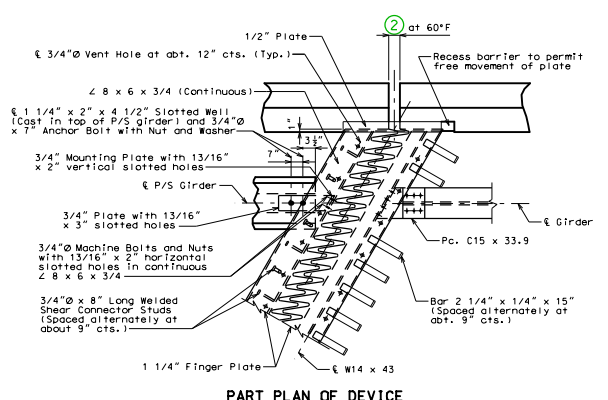
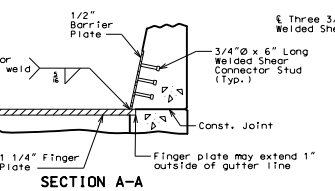
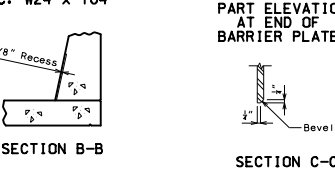
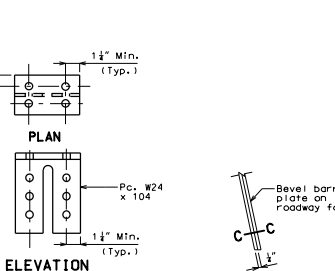
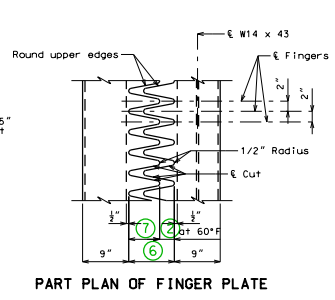
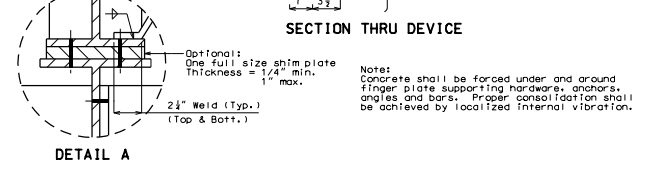
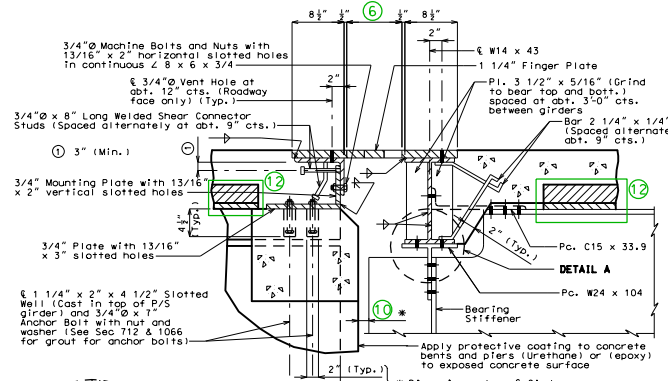


LA TYPE B BARRIER (SBC)



LA TYPE D BARRIER



GENERAL NOTES:
 Finger plate shall be cut with a machine guided gas torch from one plate. The plate from which fingers are cut may be spliced before fingers are cut. The surface of cut shall not exceed 1/8\"/>

Material for the expansion device shall be ASTM A109 Grade 35 structural steel. Anchors for the expansion device shall be in accordance with Sec 1037.

Structural steel for the expansion device and barrier plate shall be coated with a minimum of two coats of inorganic zinc primer to provide a total dry film thickness of 4 mils minimum, 6 mils maximum, or galvanized in accordance with ASTM A123. Anchors need not be protected from overspray.

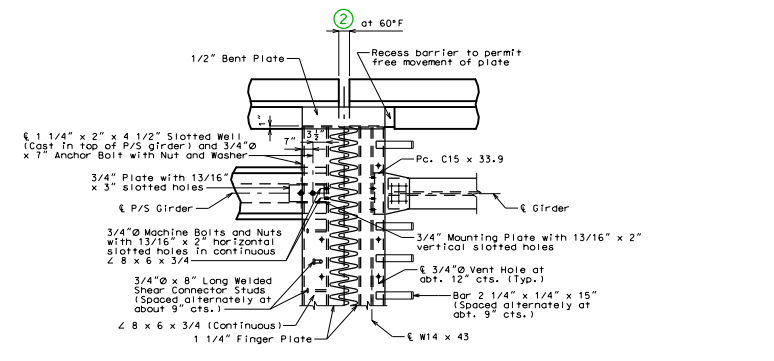
Payment for furnishing, coating or galvanizing and installing the structural steel for the expansion device will be considered completely covered by the contract unit price for Expansion Device (Finger Plate) per linear foot.

All holes shown for connections shall be subpunched 11/16-inch diameter (shop or field drill) and reamed to 13/16-inch diameter in field, except holes in members that will be used as templates and holes for the discharge trough, may be drilled to 13/16-inch diameter in the shop. For multi-piece connections, only the holes in the template member may be drilled to 13/16-inch diameter in the shop.

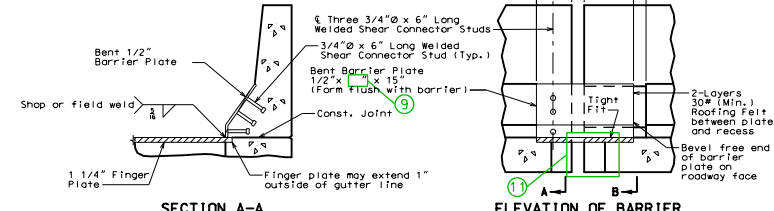
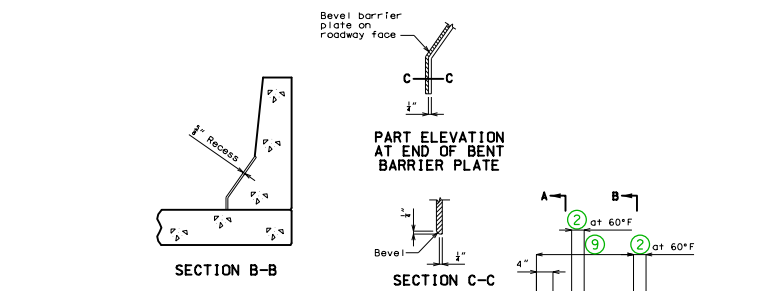
Longitudinal reinforcing steel shall be placed so that ends shall not be more than 31\"/>

Complete joint penetration welds utilized in the fabrication of the expansion device shall be nondestructively tested by an approved method.

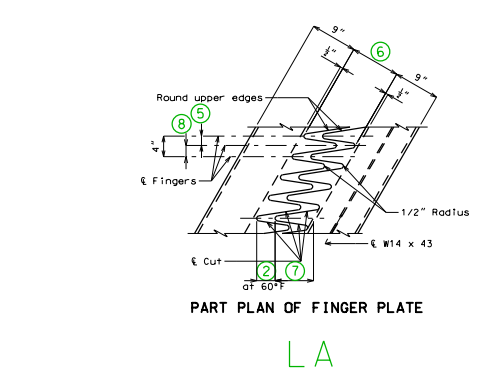
THIS MEDIA SHOULD NOT BE CONSIDERED A CERTIFIED DOCUMENT.	
DATE PREPARED	3/24/2021
MOBILE STATE	MO
COUNTY	
BR	
JOB NO.	
CONTRACT ID.	
PROJECT NO.	
BRIDGE NO.	FING05
DESCRIPTION	
DATE	
MISSOURI HIGHWAYS AND TRANSPORTATION COMMISSION	
105 WEST CAPITOL REFERENCING CITY, MO 65102 1-888-646-6887, 1-314-875-6000	
MISSOURI HIGHWAYS AND TRANSPORTATION COMMISSION SHEET NO. of 9-09-39 AM 3/24/2021	



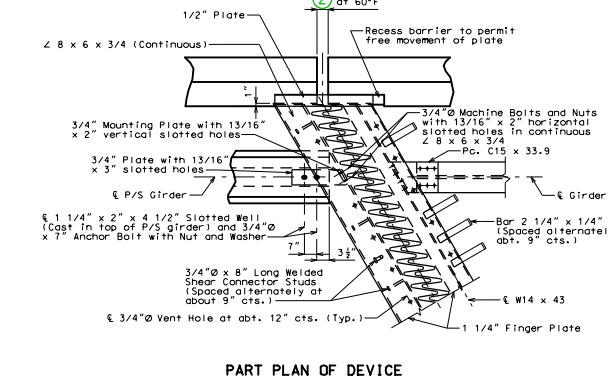
SQ TYPE B BARRIER (SBC)



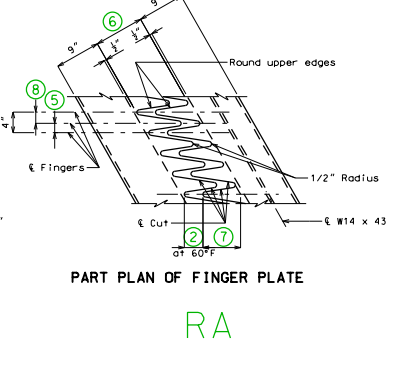
TYPE B BARRIER (SBC)(ALL)



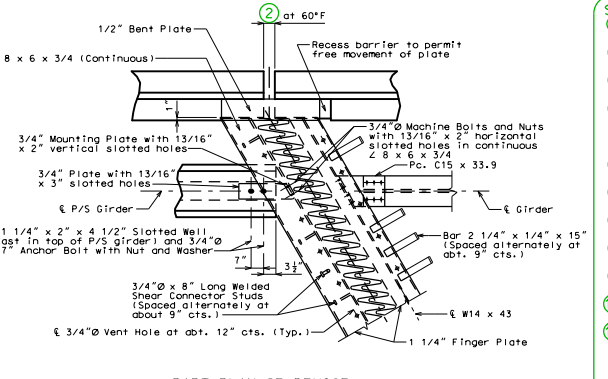
LA



RA TYPE D BARRIER



RA



RA TYPE B BARRIER (SBC)

- STANDARD DRAWING GUIDANCE (do not show on plans):**
 (For all finger plate drawings. Some notes may not apply to this sheet.)
- Not a guidance note. Do not replace.
 - Gap between fingers, barrier recess gap and, for intermediate bents, gap in barrier.
 - For end bents: ② + 1/2"/cos(skew)
 - Gap adjustment for temperature: along bridge longitudinal axis
 - Transverse gap between fingers
 - Maximum gap between fingers normal to joint @ 60°F.
 - Finger length.
 - Transverse gap between fingers: not the same as ⑤ for skewed joints.
 - Plate length = (18" + ⑥)/cos(skew)
 - Gap between girder or between girder and end bent.
 - Include details of slab projection beyond W-beam under barrier on plan of slab detail sheet. Consider similarly projection beyond front face of angle under barrier at end bents.
 - Delete panel for CIP slab.