

Environmental Considerations

The impacts a transportation project will have on the natural and human environment are evaluated and documented along with proposed measures to minimize harmful effects. Resource agencies and the public are given an opportunity to comment on the NEPA document, and the information is also used in applying for permits and environmental clearances needed to construct the project.



Forested wetlands



Endangered Indiana bat emerging from tree roost

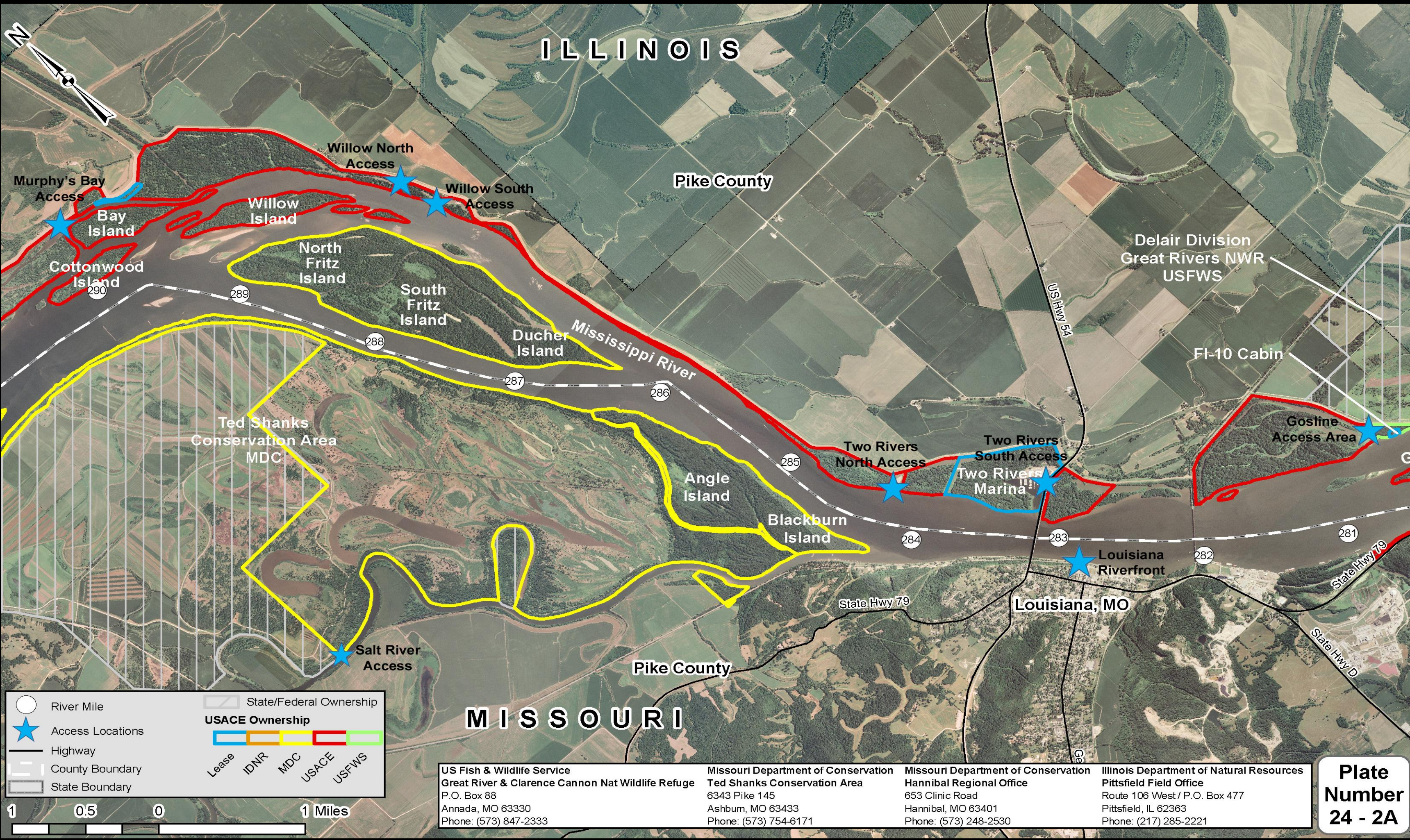


Some resources considered in planning, project development, construction, and maintenance of transportation facilities	
Air quality	Noise
Wetlands	Water quality
Social and economic aspects of the human environment	Floodplains
Endangered species and wildlife habitat	Farmland
Historic and archaeological sites	Solid and hazardous waste
Publicly owned parks, recreation areas, and wildlife & waterfowl refuges	

The NEPA document will look at

- ✓ existing environmental conditions—what’s out there?
- ✓ applicable regulations and policies—what laws apply to the resources in the project area?
- ✓ consequences and impacts of specific actions—how will the project affect different resources?
- ✓ methods to lessen or eliminate negative impacts—how can the project be implemented to produce the fewest harmful effects?

Typical NEPA Document Map



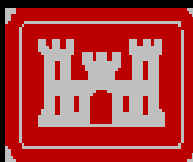
Missouri Department of Transportation

The lead agencies will coordinate with regulatory and other agencies including local governments and other affected parties throughout project development.

The general public will have opportunities to participate through the project website as well as at public meetings.



U.S. Coast Guard



U.S. Army Corps of Engineers



U.S. Environmental Protection Agency



U.S. Fish & Wildlife Service



Missouri Department of Conservation



Missouri Department of Natural Resources