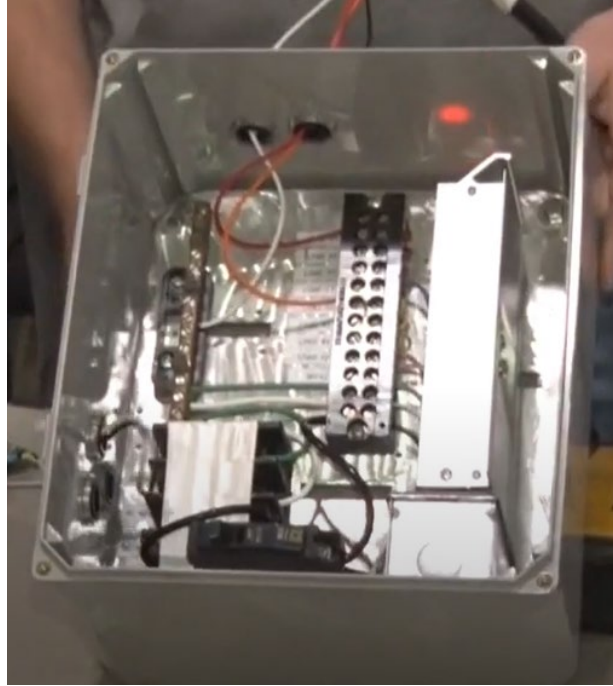


Emergency Signal Flasher



Description and Benefit

This innovation was built to be used in the event of a traffic signal cabinet being struck and knocked off the concrete pad resulting in damaged cables and a dark intersection. The onsite electrician can hook up the flasher to supply power and energize the signal wires going to the field all while identifying and labeling each cable that may have lost its identification when struck. This will provide safety to the traveling public by having the intersection in flash rather than dark, while also saving time by already having all the cables identified prior to installation of the new cabinet. This also will simplify and speed up the installation of the new cabinet resulting in a safer experience for both the public and electricians.

For More Information Contact

Kansas City District/Maintenance

Nathan Mounce at nathan.mounce@modot.mo.gov or 816-308-9583.