

CONCEPTUAL LAYOUT  
FOUR-WAY SIGNAL  
CONTROLLED INTERSECTION

COST ESTIMATE: \$2.7 MILLION

LEGEND

NEW PAVEMENT/SHOULDER

CONCRETE MEDIAN

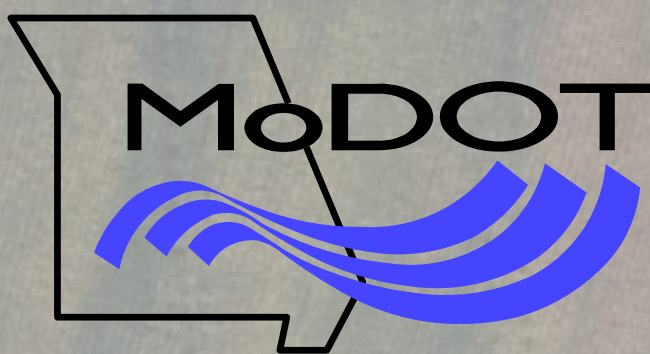
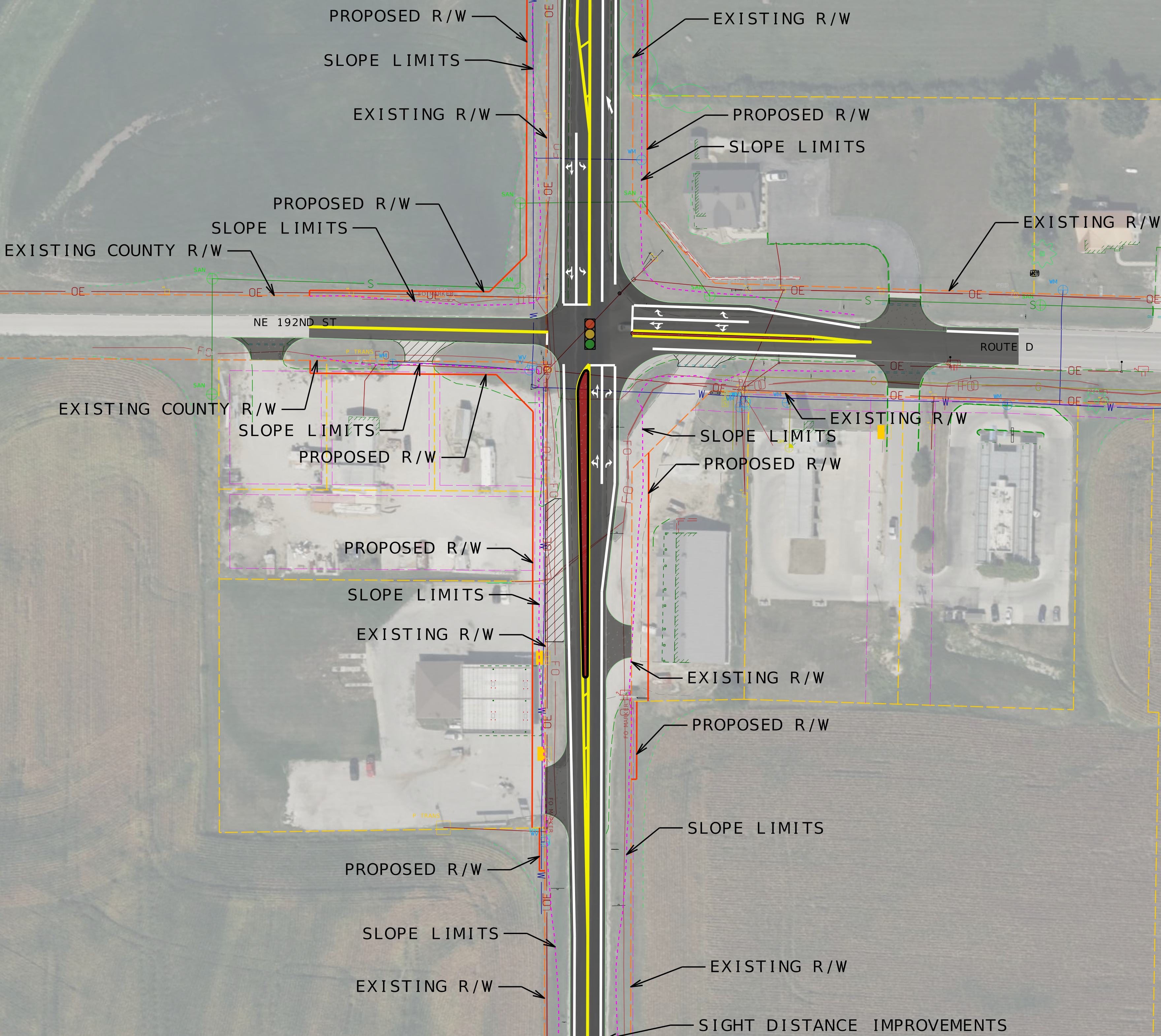
DEMOLITION/REMOVALS

EXISTING RIGHT OF WAY

PROPOSED RIGHT OF WAY

PROPERTY LINE

SLOPE LIMITS



FOR INFORMATION ONLY  
MoDOT KANSAS CITY DESIGN