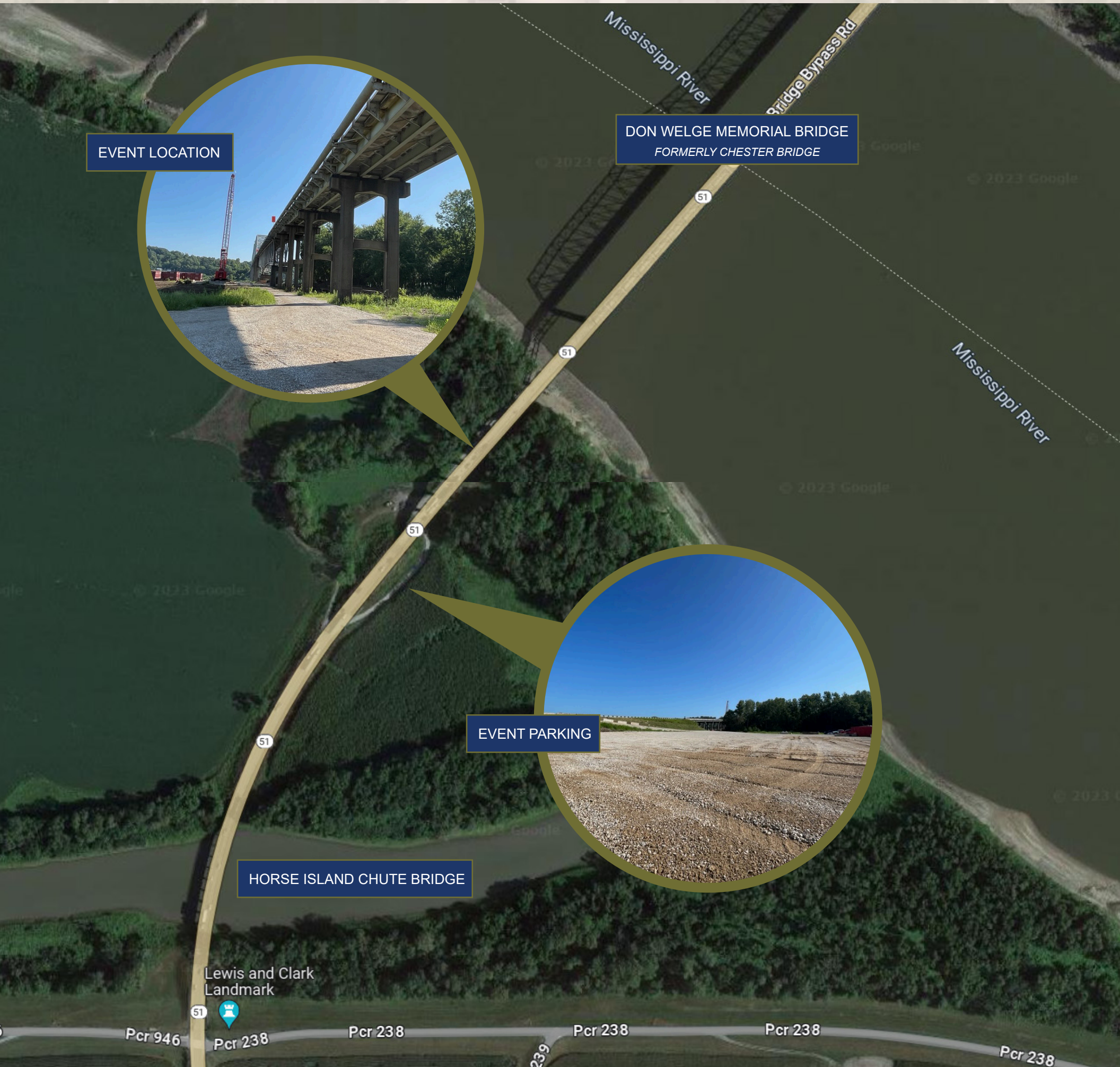


# DON WELGE MEMORIAL BRIDGE

## G R O U N D B R E A K I N G



EVENT LOCATION

DON WELGE MEMORIAL BRIDGE  
FORMERLY CHESTER BRIDGE

EVENT PARKING

HORSE ISLAND CHUTE BRIDGE

### DIRECTIONS

The ceremony will begin at 11 a.m. on the Missouri side of the Mississippi River at the Don Welge Memorial Bridge construction site. To attend, drivers on Missouri Route 51 should exit south onto the project entrance between the Horse Island Chute bridge and Chester Bridge.

### PARKING

A gravel lot has been constructed on the south side of the project site between Horse Island Chute bridge and Chester Bridge, as indicated on the map. It is located at the existing service road. Parking is limited near the bridge site, and attendees are encouraged to carpool when possible.

### EVENT LOCATION

The event location is a short walking distance from the parking lot and will be located on the north side. Pedestrians will be guided to cross under the bridge to access the event location.

### FOR MORE INFORMATION

For more information, please contact Missouri Department of Transportation Communications Manager Nicole Thieret at (573) 380-5305.

