

2009-10 District Winner

Tool and Equipment Challenge Showcase
<http://wwwwi/intranet/or/SolutionsAtWork/ToolEquip.htm>

March 2010

Prepared by Organizational Results
Missouri Department of Transportation

Dipper Box

Description

A metal box was fabricated to hold and clean rakes and shovels during asphalt operations.

Benefit

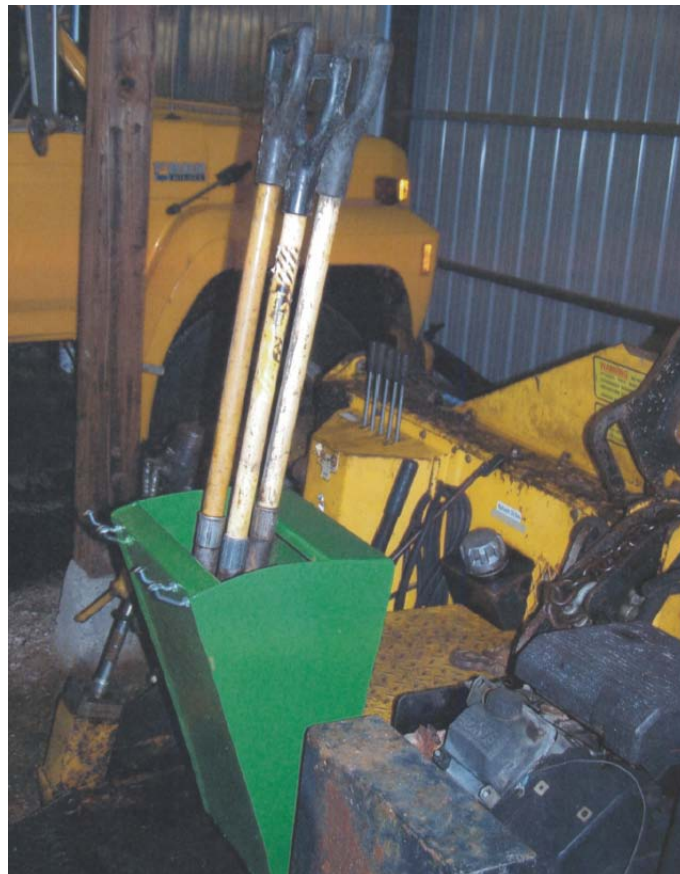
Rakes and shovels are kept clean and handy during asphalt work. Anti-seizing agent also is less likely to drip on pavements. This unit is designed specifically to mount onto a pull paver.

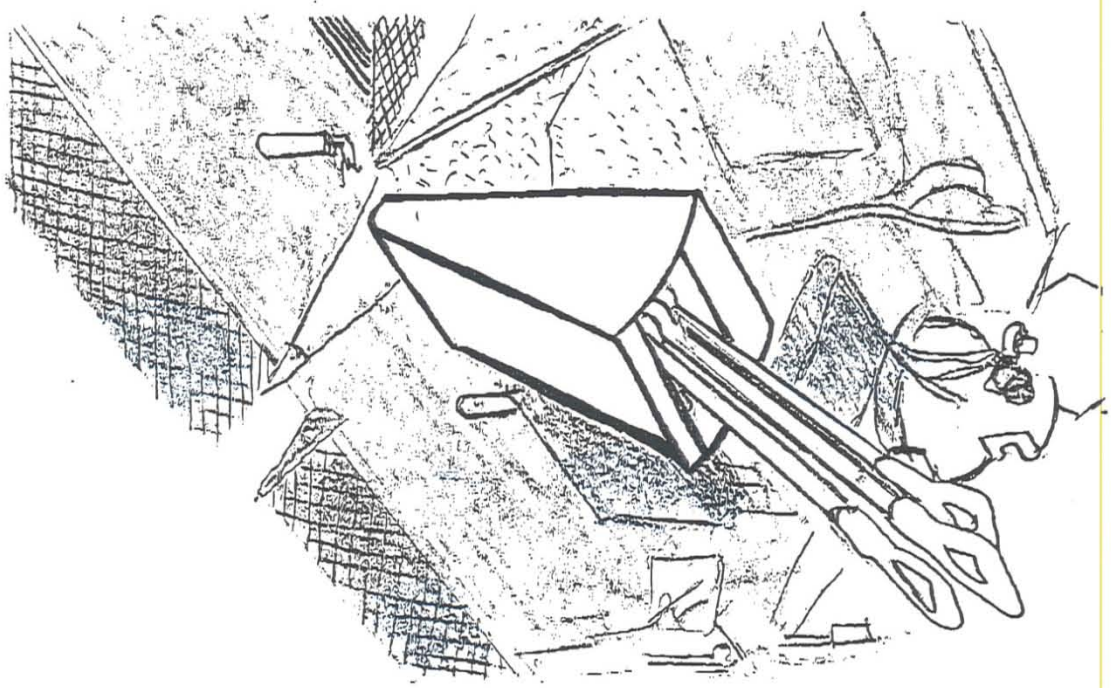
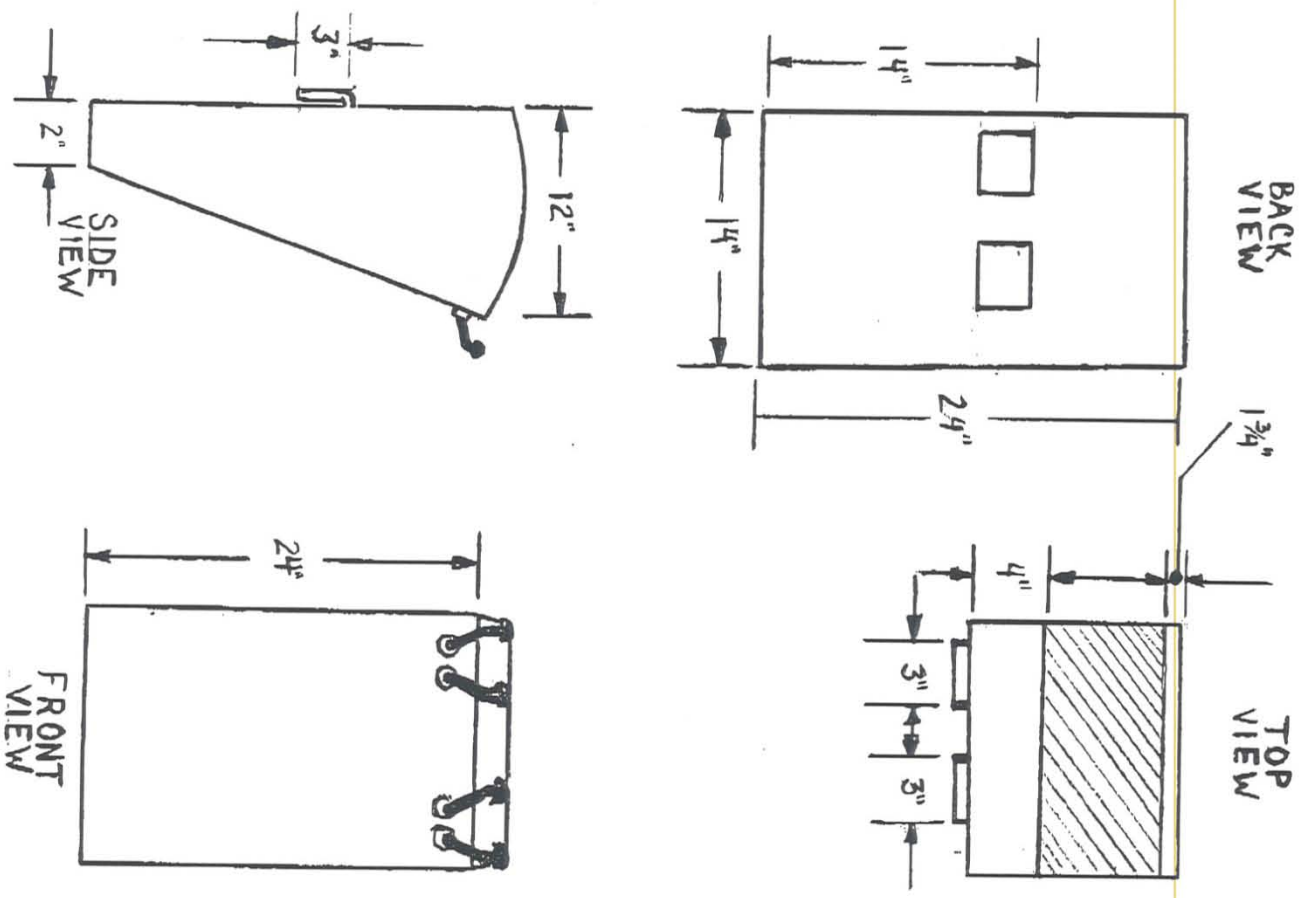
Parts and Labor

48" x 26" x 1/8" flat steel	\$28
6 in. - 3" x 3" x 1/4" angle iron	\$3
1 - 3/8" drain valve	\$11
1 - 3/8" elbow and coupler	\$8
Total	\$50
Labor	4 hours

For More Information

Contact Travis Wilfong at travis.wilfong@modot.mo.gov or (417) 451-2914. Additional photos can be seen by accessing the Tool and Equipment Challenge homepage at <http://wwwwi/intranet/or/SolutionsAtWork/ToolEquip.htm>.





DIPPER BOX