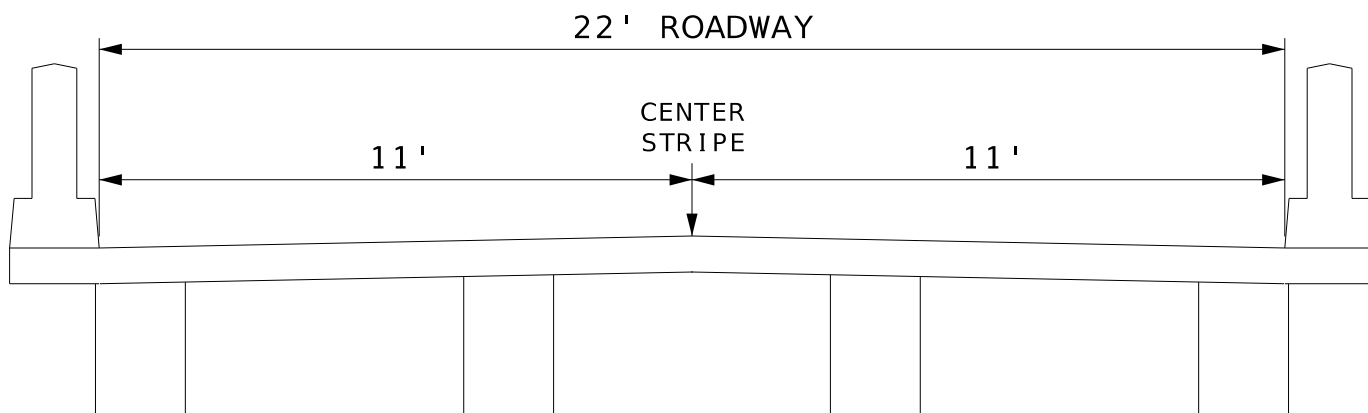


LACLEDE AND DALLAS COUNTY
ROUTE 64
BRIDGE J0560 - GOODWIN HOLLOW CREEK

DETAILS OF EXISTING AND PROPOSED BRIDGE

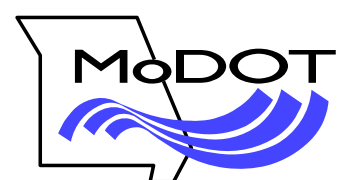
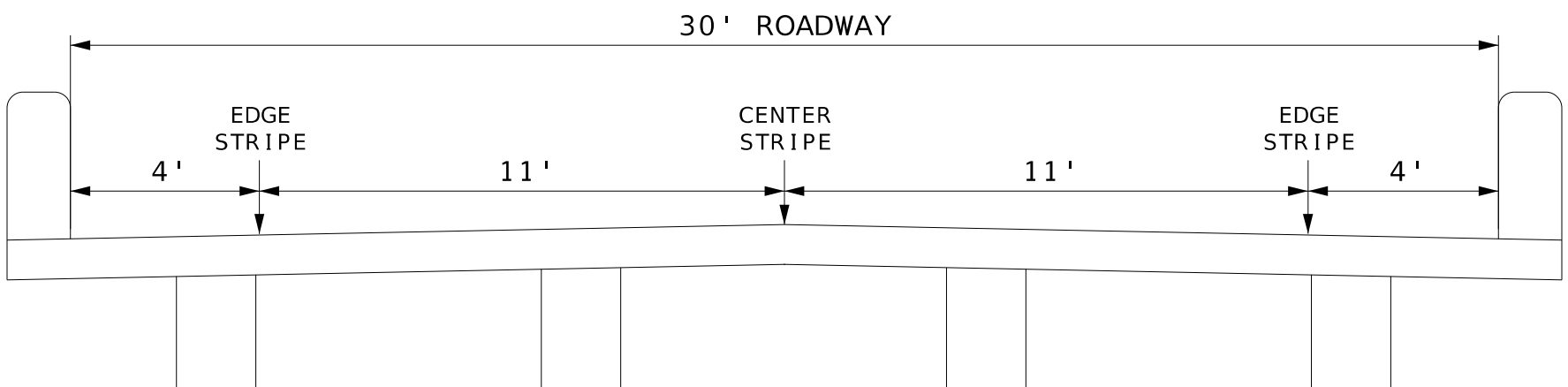
EXISTING BRIDGE - J0560

BUILT IN 1931
OVERALL WIDTH - 25'
OVERALL LENGTH - 190'



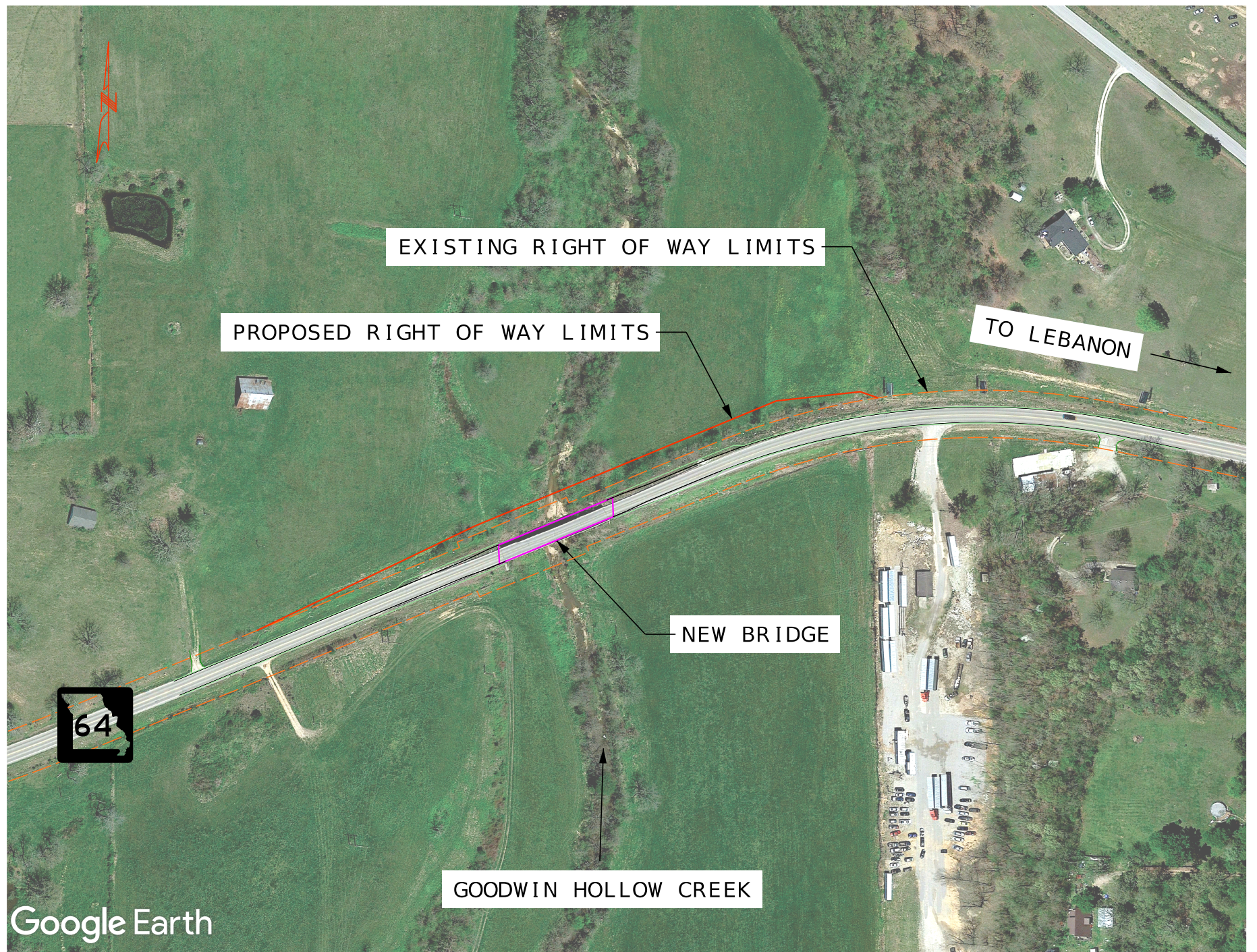
PROPOSED BRIDGE - A9326

CONSTRUCTION YEAR 2024
OVERALL WIDTH - 32'-8"
OVERALL LENGTH - 209'



LACLEDE AND DALLAS COUNTY
ROUTE 64
BRIDGE J0560 - GOODWIN HOLLOW CREEK

PLAN OF BRIDGE AND ROADWAY IMPROVEMENTS



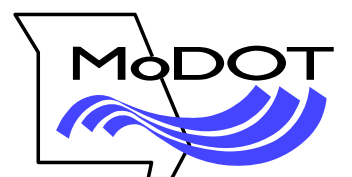
IMPROVEMENTS

INCREASED THE RADIUS OF THE CURVE TO MEET SAFETY STANDARDS

CORRECTED SUPERELEVATION (TILT) OF ROADWAY THROUGH CURVE

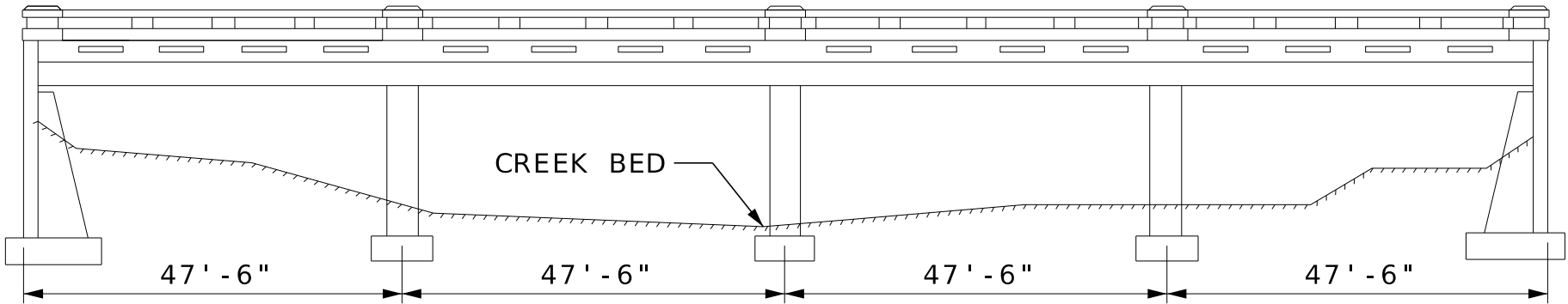
INCREASED THE WIDTH OF THE BRIDGE

IMPROVEMENTS CAUSED THE ROADWAY TO SHIFT TO THE NORTH
RESULTING IN A NEGOTIATION TO PURCHASE 0.5 ACRES FROM
THE AFFECTED LANDOWNER.



LACLEDE AND DALLAS COUNTY
ROUTE 64
BRIDGE J0560 - GOODWIN HOLLOW CREEK

SIDE VIEW OF EXISTING BRIDGE



EXISTING BRIDGE - J0560
BUILT IN 1931
OVERALL WIDTH - 25'
OVERALL LENGTH - 190'

