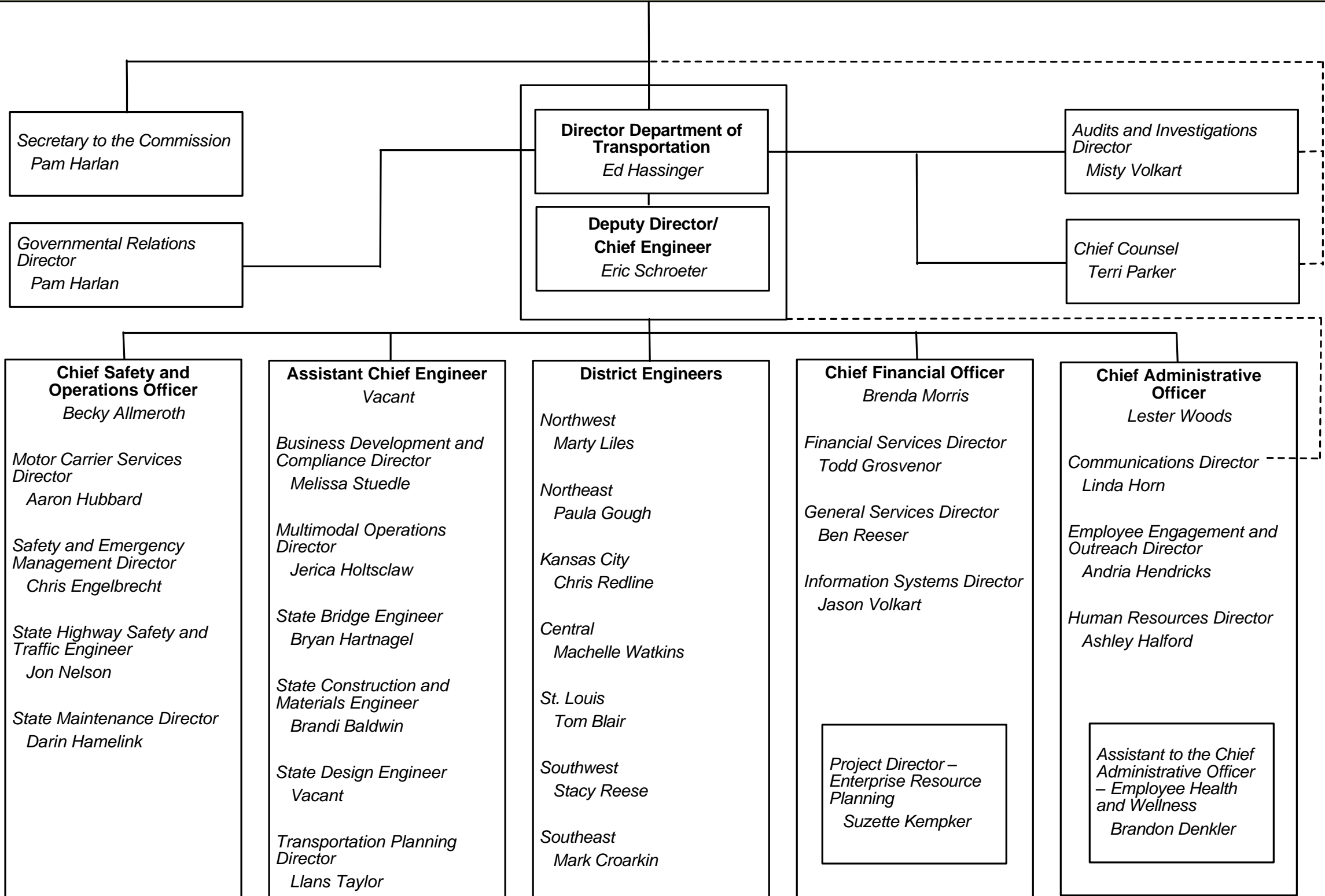


Missouri Department of Transportation

| Missouri Highways and Transportation Commission | | | | | |
|--|--|--|---|---|---|
| Chair <i>W. Dustin Boatwright</i> <i>Cape Girardeau</i> | Vice Chair <i>Warren K. Erdman</i> <i>Kansas City</i> | Commissioner <i>Gregg C. Smith</i> <i>Clinton</i> | Commissioner <i>Daniel J. Hegeman</i> <i>Cosby</i> | Commissioner <i>Francis G. Slay</i> <i>St. Louis</i> | Commissioner <i>Ann Marie Baker</i> <i>Springfield</i> |



SAFETY

SERVICE

STABILITY