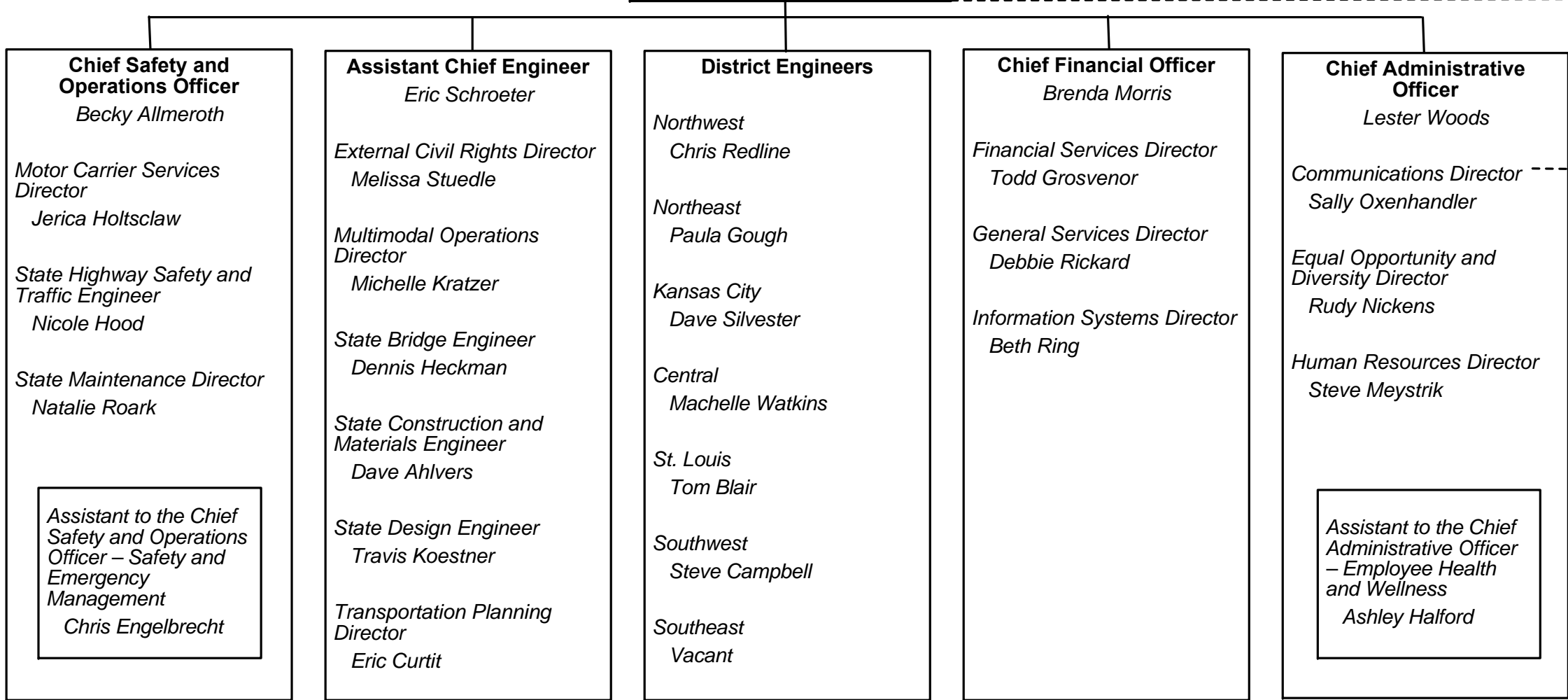
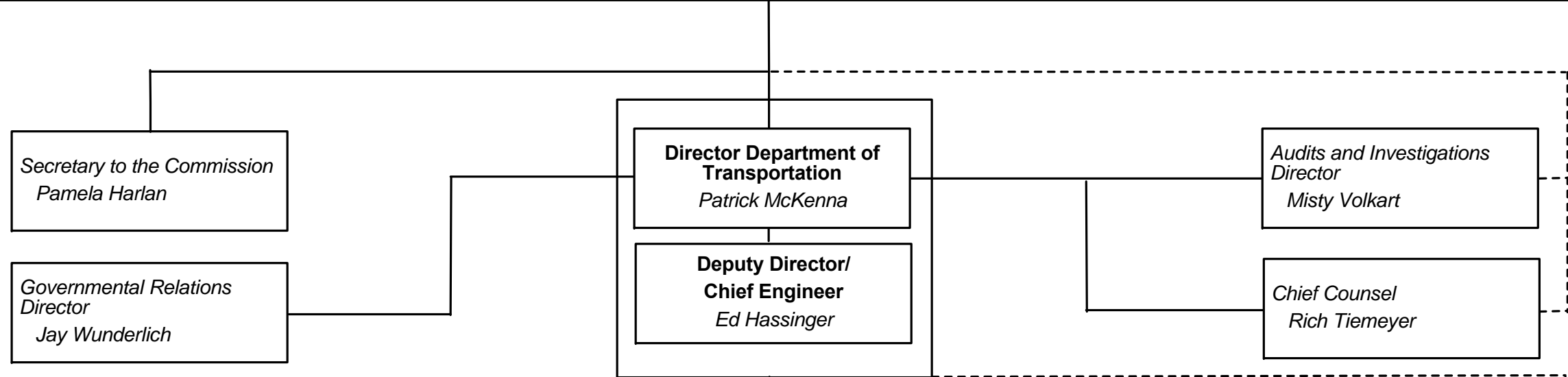


Missouri Department of Transportation

| Missouri Highways and Transportation Commission | | | | | |
|--|--|-------------------------------|---|---|--|
| Chair <i>John W. Briscoe</i> New London | Vice Chair <i>Michael T. Waters, Jr.</i> Orrick | Commissioner Vacant | Commissioner <i>Gregg C. Smith</i> Clinton | Commissioner <i>Robert G. Brinkmann</i> Saint Albans | Commissioner <i>Terry L. Ecker</i> Elmo |



SAFETY

SERVICE

STABILITY