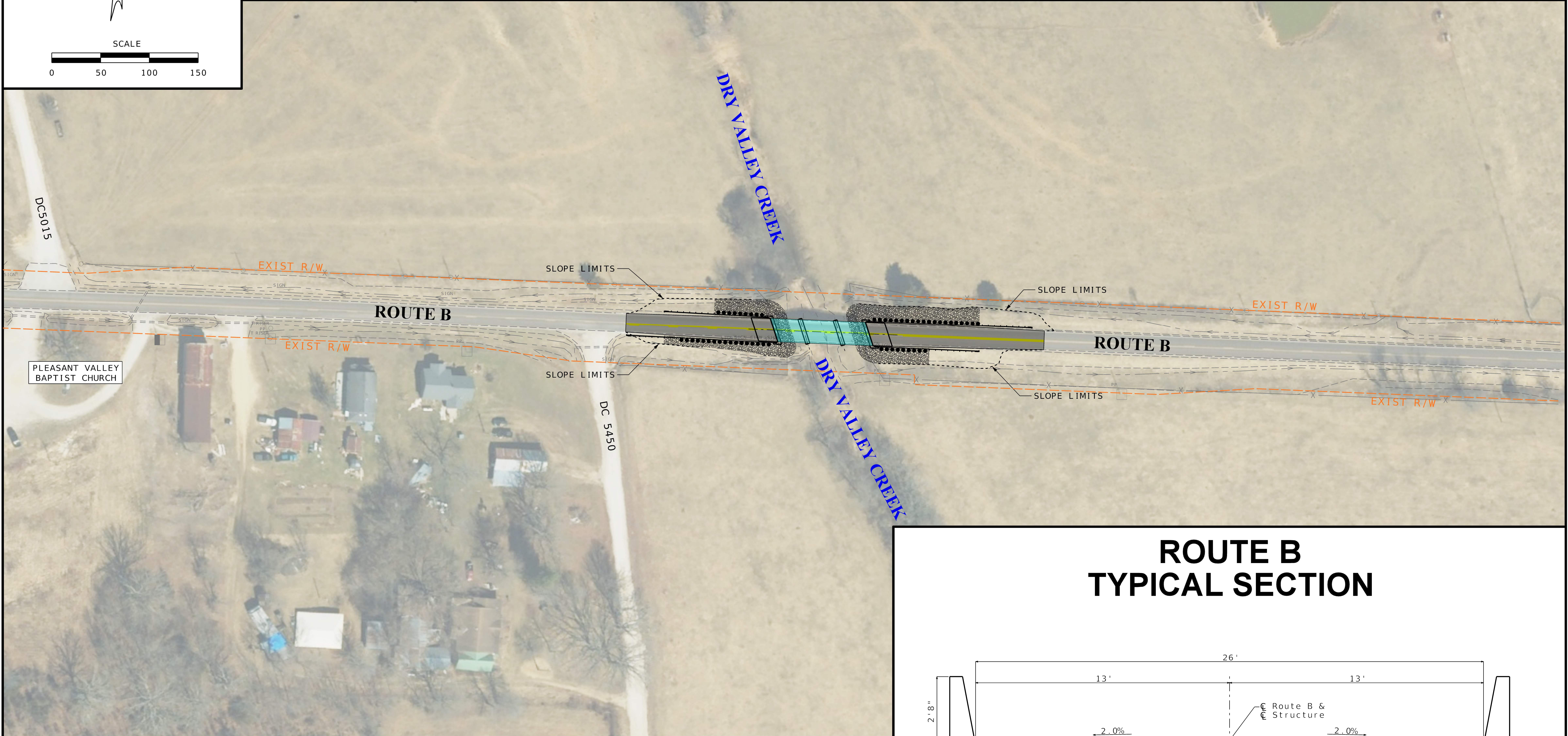
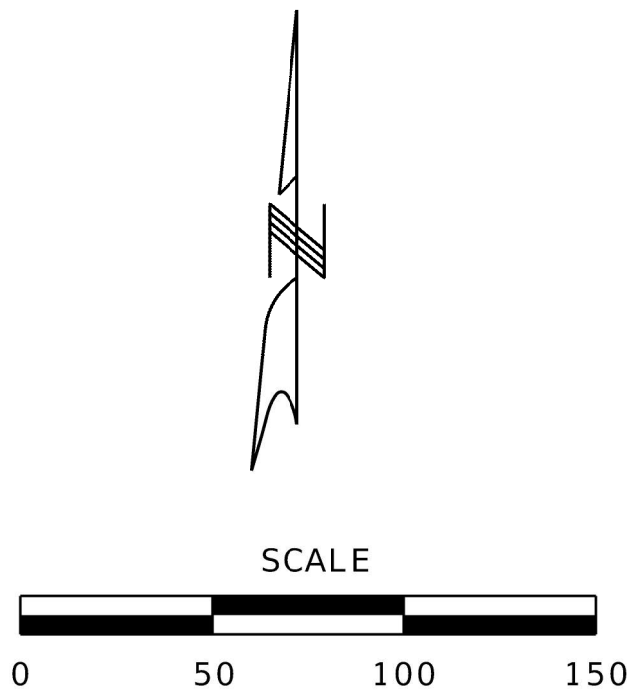


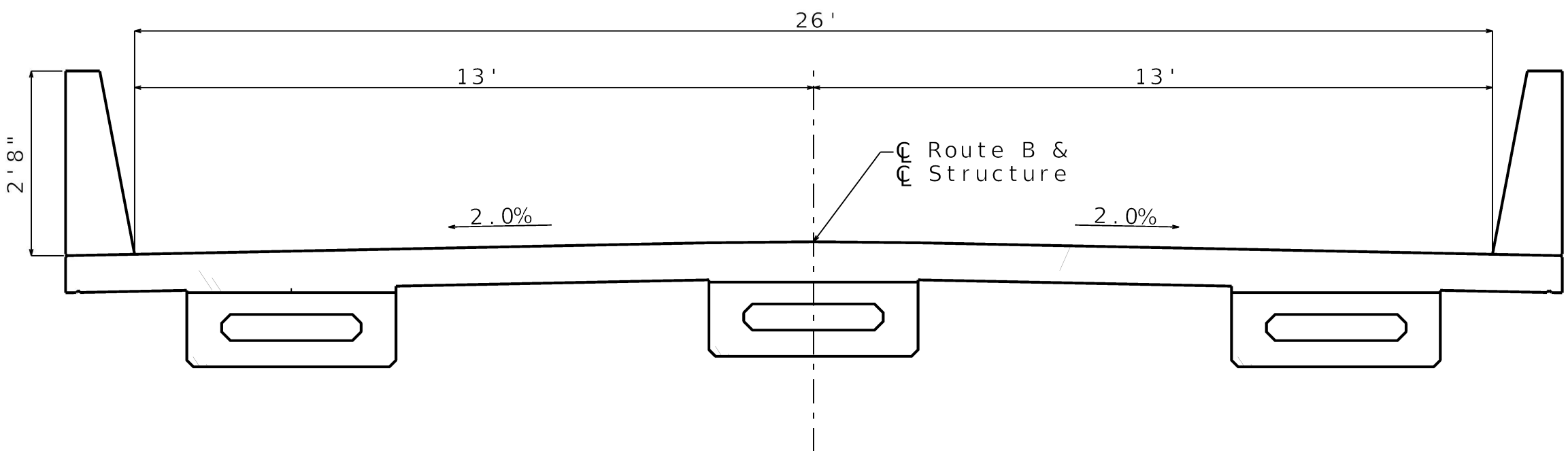
ROUTE B BRIDGE REPLACEMENT OVER DRY VALLEY CREEK

DENT COUNTY

PRELIMINARY PLANS - SUBJECT TO CHANGE



ROUTE B  
TYPICAL SECTION



LEGEND	
	EXISTING RIGHT OF WAY LINE
	SLOPE LIMITS
	PROPOSED ROADWAY RECONSTRUCTION
	PROPOSED BRIDGE
	AGGREGATE ROCK BLANKET