



U.S. ROUTE 63 REALIGNMENT

in Osage County

Improving the U.S. Route 63 corridor in mid-Missouri is a decades-long state and regional need, brought forward from the citizens of the region through the planning partner needs prioritization process, and the first segment is coming close to fruition. Throughout the process - which began in the early 2000s and has included the National Environmental Policy Act (NEPA) process, the High Priority Unfunded Needs process, and the funding identification process - there have been multiple opportunities for the public to provide input, which has guided MoDOT's team to the preliminary design that was presented Wednesday, Dec. 3, to the Missouri Highways and Transportation Commission (Commission) for approval.



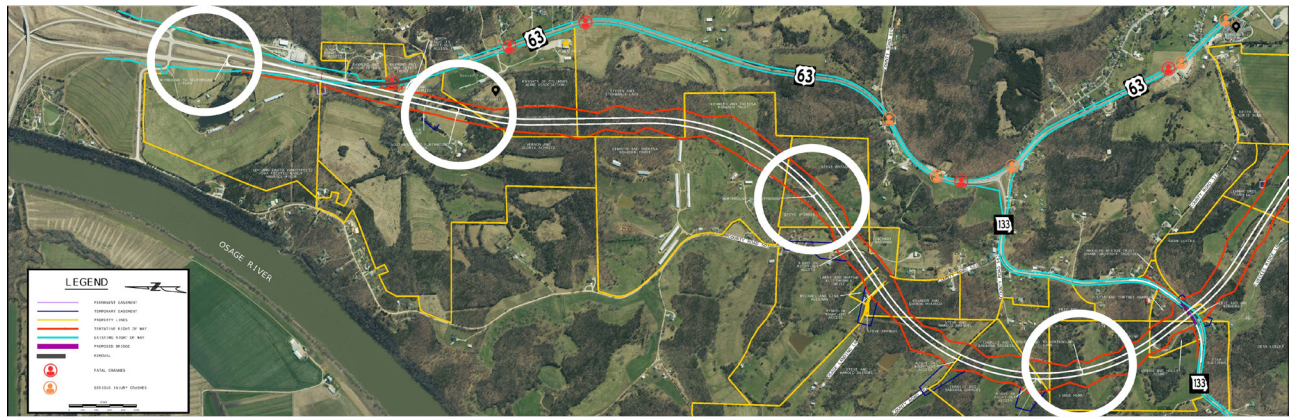
LOCATION APPROVAL AND CHANGES

After giving thoughtful consideration to the comments and concerns shared by the public, the Commission has approved the location and design of the proposed project to realign U.S. Route 63 from south of U.S. Route 50 to the Maries River. The design has been updated from what was presented at the Aug. 21, public hearing, which is a direct result of community feedback from the participation of hearing attendees, more than 270 comments received during the associated comment period, and feedback provided to the Commission at the Nov. 3 and Dec. 3 meetings. Changes to the design include:

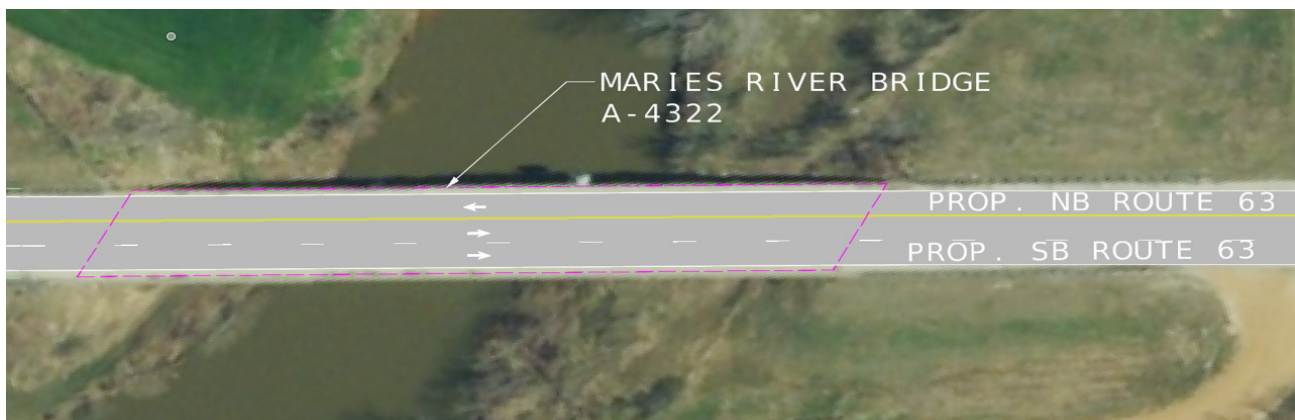
Adding a connection at the north end of the project, near the soccer fields.



Incorporating additional access points along the new alignment via J-turns.



Tying the dual southbound lanes into the existing climbing lane at the south end of the project. This will include restriping the bridge over the Maries River to three lanes (one northbound, two southbound) and adding a dedicated left turn lane for southbound U.S. Route 63 to County Road 611.



WHAT'S NEXT

As detailed design progresses, the department will apply its engineering judgement to consider and incorporate, if possible, any reasonable options to avoid disruption of traffic during the construction process and any reasonable options to minimize or avoid the acquisition of property and property rights along the corridor. And, additional review of the south end design, its bridge, and possible northbound right-only access to Westphalia.

The department will review traffic flow for Missouri Route 133 to the new U.S. Route 63 alignment for potential improvements.

The department will continue to collaborate with local stakeholders including the county commission, law enforcement, members of the traveling public, and affected property owners. When the plans for the corridor are closer to being finalized, MoDOT will present them to the community. The date and location of that informational meeting has not yet been determined.



U.S. ROUTE 63 REALIGNMENT

in Osage County

Project newsletter | December 2025