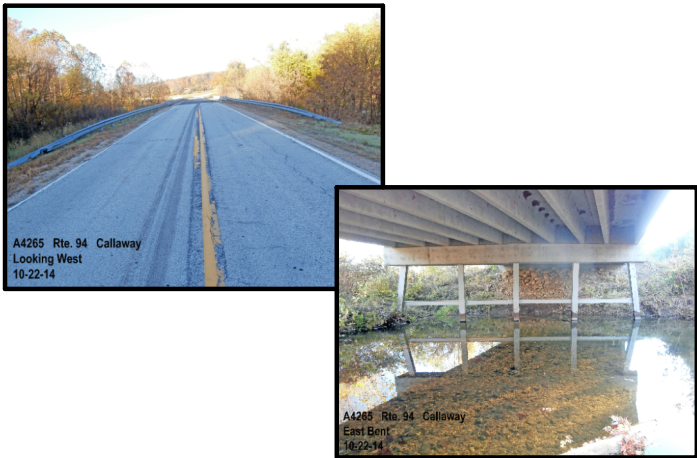


# CALLAWAY COUNTY

## ROUTE 94 OVER LITTLE TAVERN CREEK

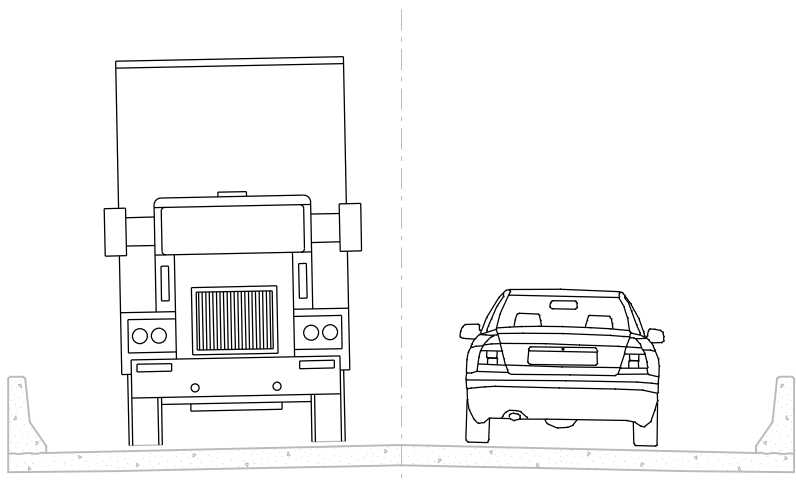
### EXISTING BRIDGE



### EXISTING BRIDGE FACTS

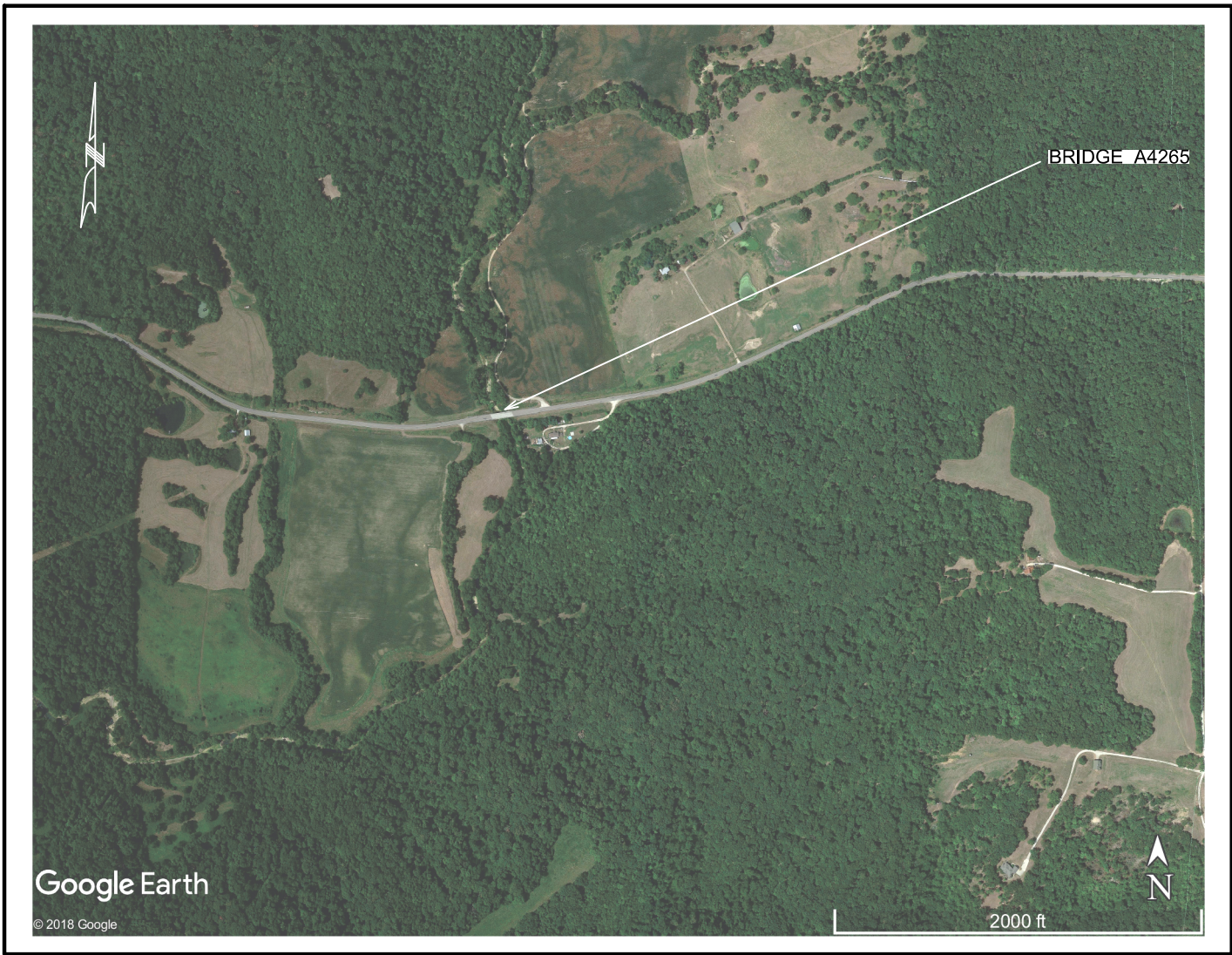
- ROUTE 94 – BRIDGE # A4265
- EXISTING BRIDGE WAS CONSTRUCTED IN 1983
  - LENGTH = 121’ AND ROADWAY WIDTH = 32’- 10”

### PROPOSED BRIDGE TYPICAL SECTION



### PROPOSED BRIDGE FACTS

- ROUTE 94 – BRIDGE # A42651
- REHABILITATION YEAR 2020
  - MATCH EXISTING LENGTH AND WIDTH
  - INSTALL BRIDGE DECK OVERLAY



### TRAFFIC IMPACTS

- BRIDGE WILL BE OPEN TO ONE-WAY TRAFFIC DURING CONSTRUCTION UTILIZING A TEMPORARY TRAFFIC SIGNAL.
- TOTAL PROJECT DURATION WILL BE APROXIMATLEY 2 WEEKS.

