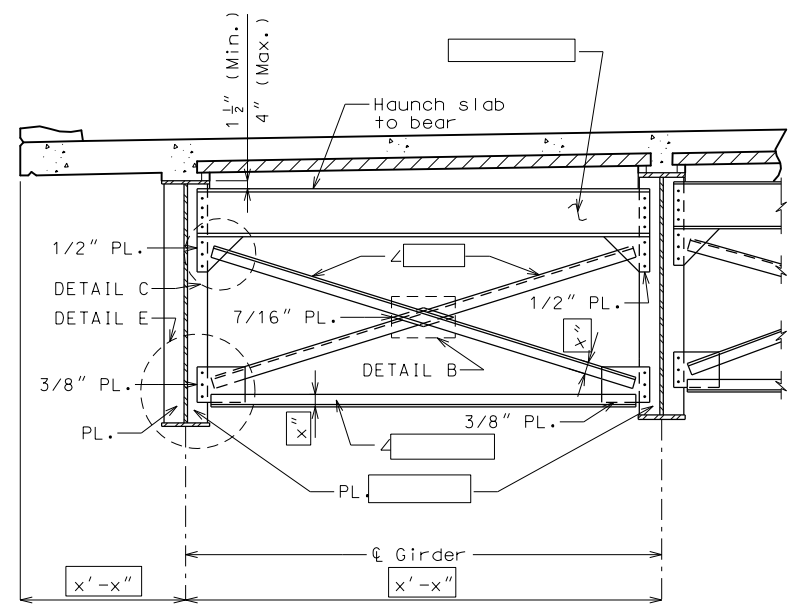


"THIS MEDIA SHOULD NOT BE CONSIDERED A CERTIFIED DOCUMENT."

DATE PREPARED 7/7/2020	
ROUTE *	STATE MO
DISTRICT BR	SHEET NO. *
COUNTY *	
JOB NO. *	
CONTRACT ID.	
PROJECT NO.	
BRIDGE NO. DIA13	



TYPICAL PART SECTION SHOWING END DIAPHRAGMS

Standard Drawing Guidance (do not show on plans):

Check with Designer to verify use of Flange Connection Angles, if they are not needed turn the Bridge-Miscellaneous level off.

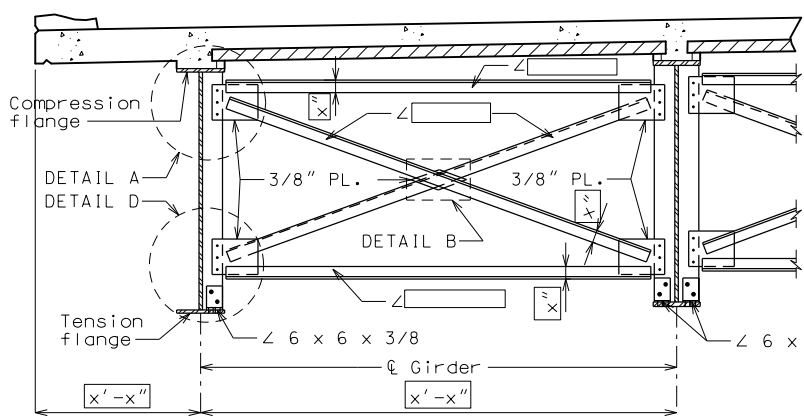
Angle size should be shown without inch (") marks on the plans.

Do not show fillet weld size unless by design and size of weld exceeds Sec 1080.

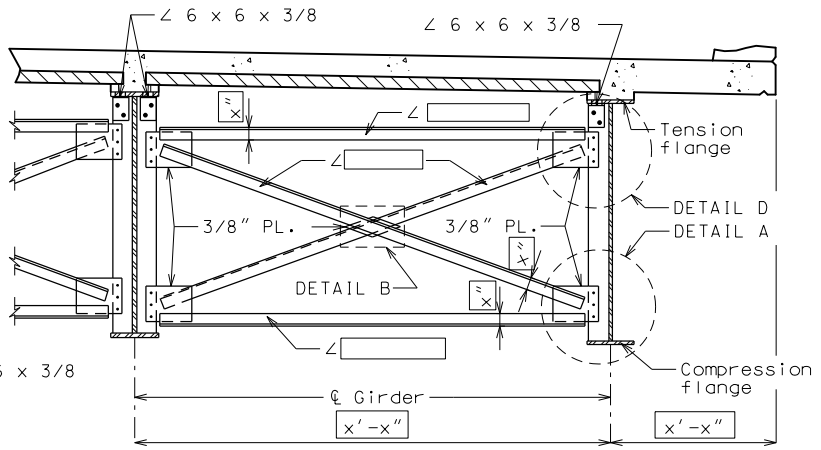
Show specialty welds information as given unless by design.

Delete panels for CIP slab.

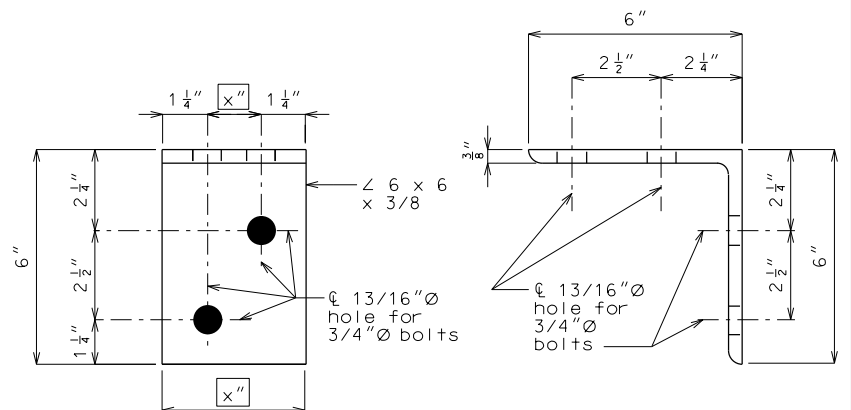
① Use Type 3 for weathering steel bolted connections and Type 1 for painted or galvanized steel bolted connections.



TYPICAL PART SECTION SHOWING INTERMEDIATE DIAPHRAGMS BOTTOM FLANGE IN TENSION

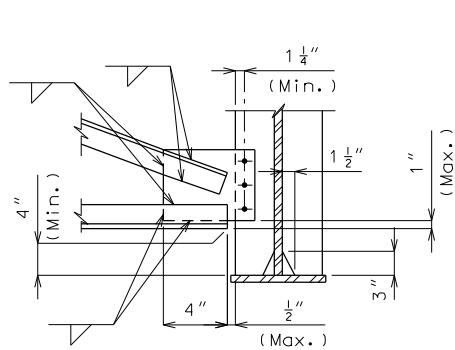


TYPICAL PART SECTION SHOWING CROSS FRAMES AND INTERMEDIATE DIAPHRAGMS TOP FLANGE IN TENSION

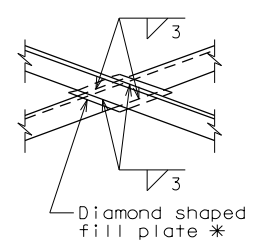


ELEVATION

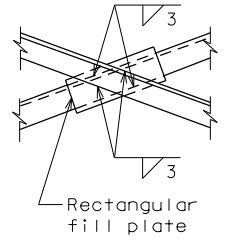
SIDE VIEW



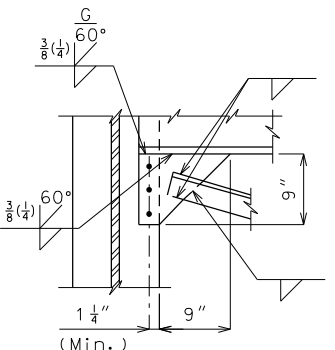
DETAIL A (DETAIL E similar)



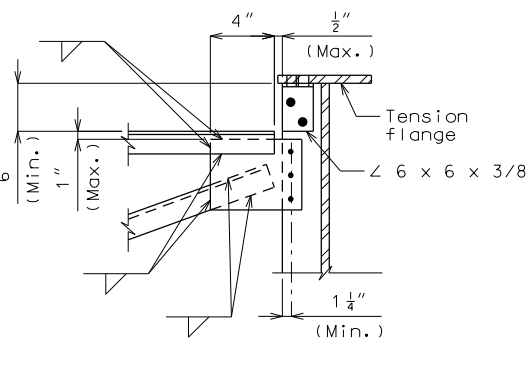
DETAIL B



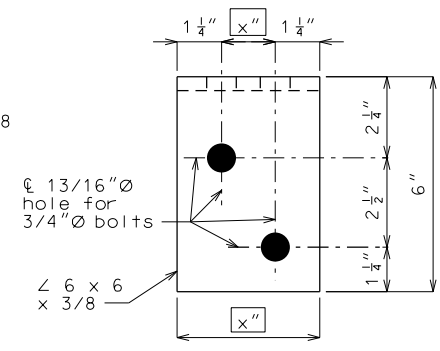
OPTIONAL DETAIL B



DETAIL C



DETAIL D



PLAN

DETAIL OF FLANGE CONNECTION ANGLE

Note: Bolts shall be 3/4"Ø ASTM F3125 Grade A325 Type 1 Type 3 that connect the 6 x 6 x 3/8 angle to the top flange and placed so the nut is on the inside of flange (toward the web).

* At the contractor's option, rectangular fill plates may be used in lieu of diamond fill plates as shown in Optional Detail B.

STEEL DIAPHRAGMS

DESCRIPTION DATE MISSOURI HIGHWAYS AND TRANSPORTATION COMMISSION



IF A SEAL IS PRESENT ON THIS SHEET IT HAS BEEN ELECTRONICALLY SEALED AND DATED.