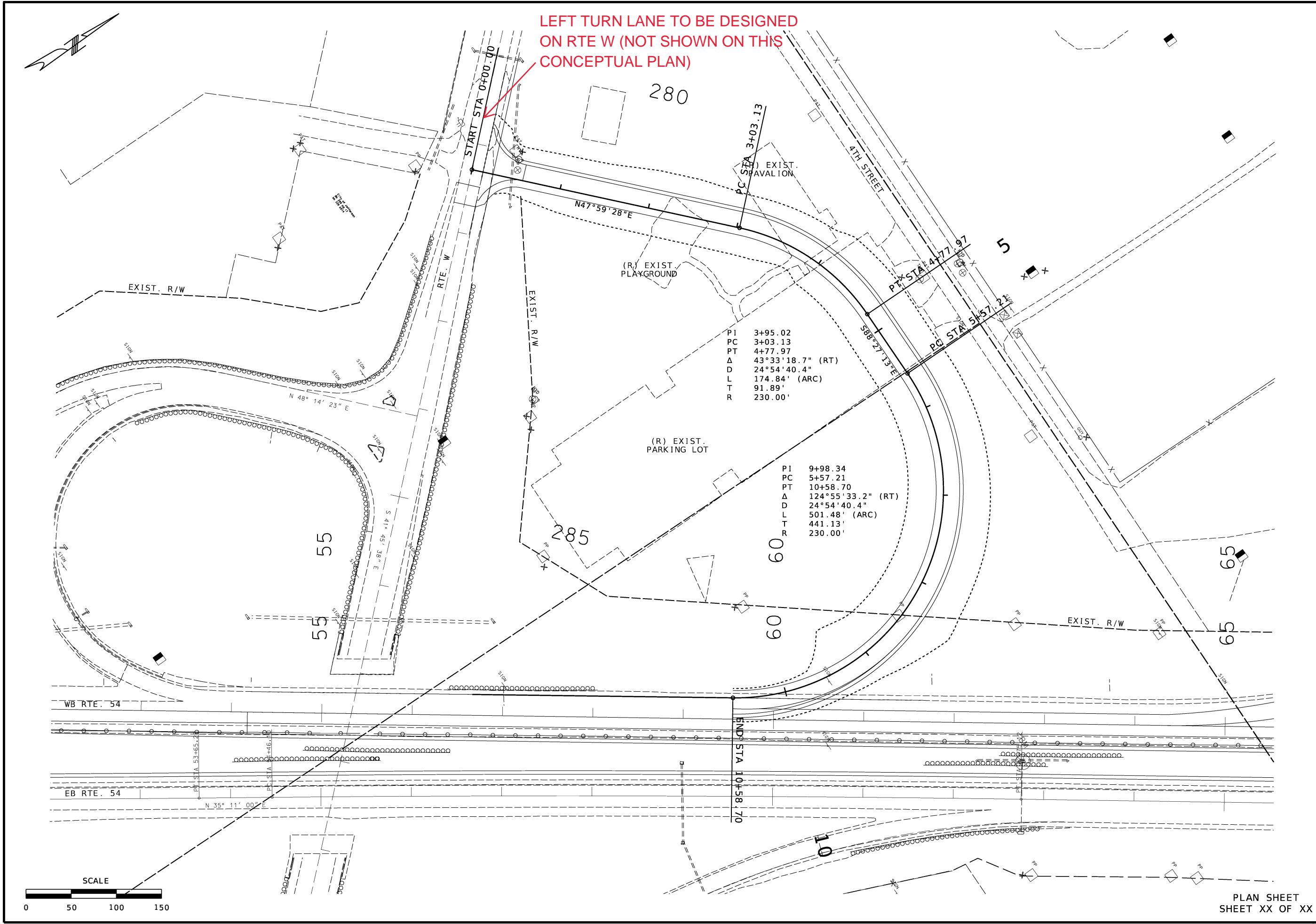

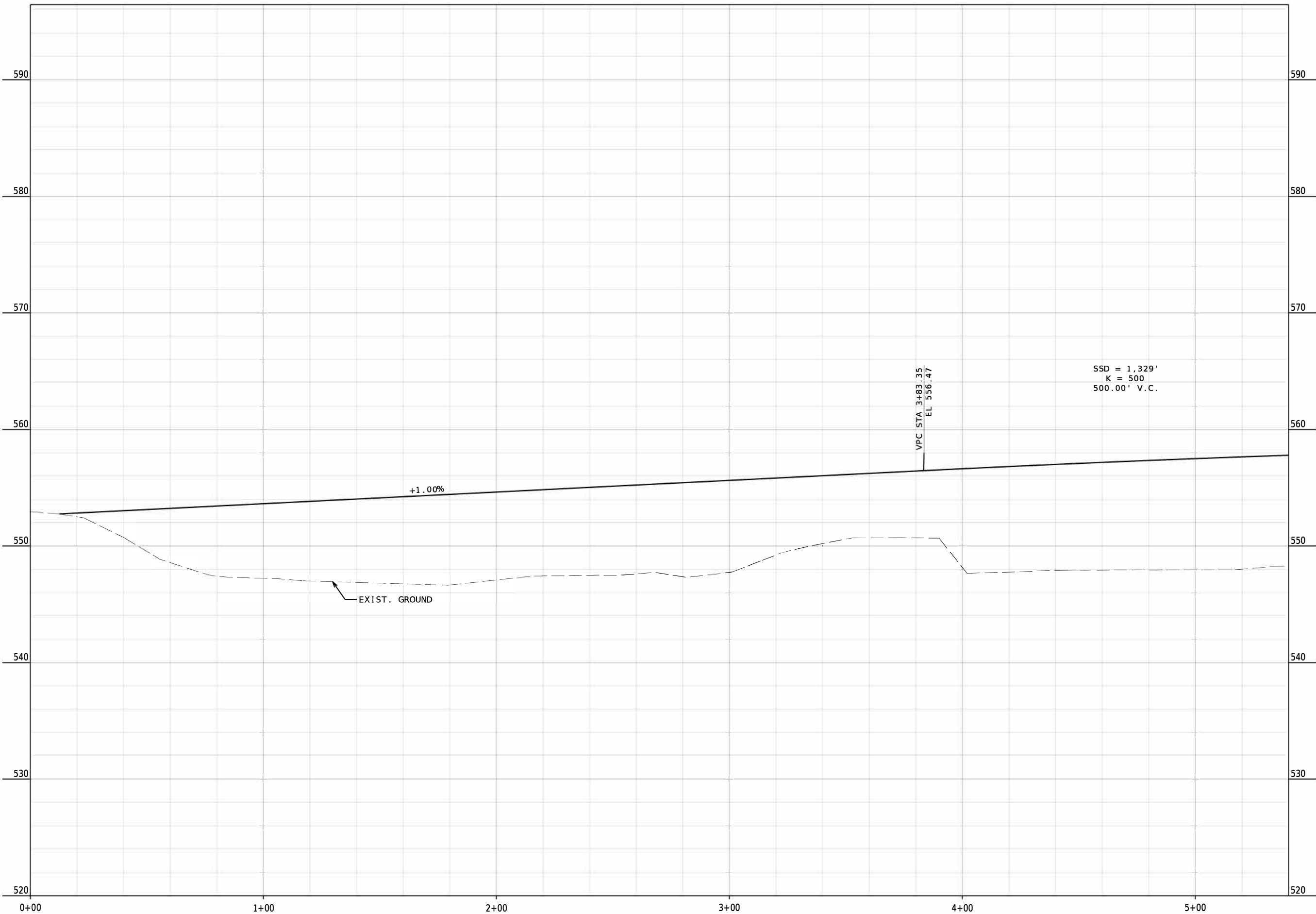


LEFT TURN LANE TO BE DESIGNED ON RTE W (NOT SHOWN ON THIS CONCEPTUAL PLAN)



DATE PREPARED	
ROUTE 54	STATE MO
DISTRICT CD	SHEET NO. XX
COUNTY CALLAWAY	
JOB NO. JCD0170	
CONTRACT ID.	
PROJECT NO.	
BRIDGE NO.	
DATE	DESCRIPTION
MISSOURI HIGHWAYS AND TRANSPORTATION COMMISSION	
 105 WEST CAPITOL JEFFERSON CITY, MO 65102 1-888-ASK-MODOT (1-888-275-6636)	
PLAN SHEET SHEET XX OF XX	

IF A SEAL IS PRESENT ON THIS SHEET IT HAS BEEN ELECTRONICALLY SEALED AND DATED.



DATE PREPARED

ROUTE 54	STATE MO
DISTRICT CD	SHEET NO. XX

COUNTY  
CALLAWAY

JOB NO.  
JCD0170

CONTRACT ID.

PROJECT NO.

BRIDGE NO.

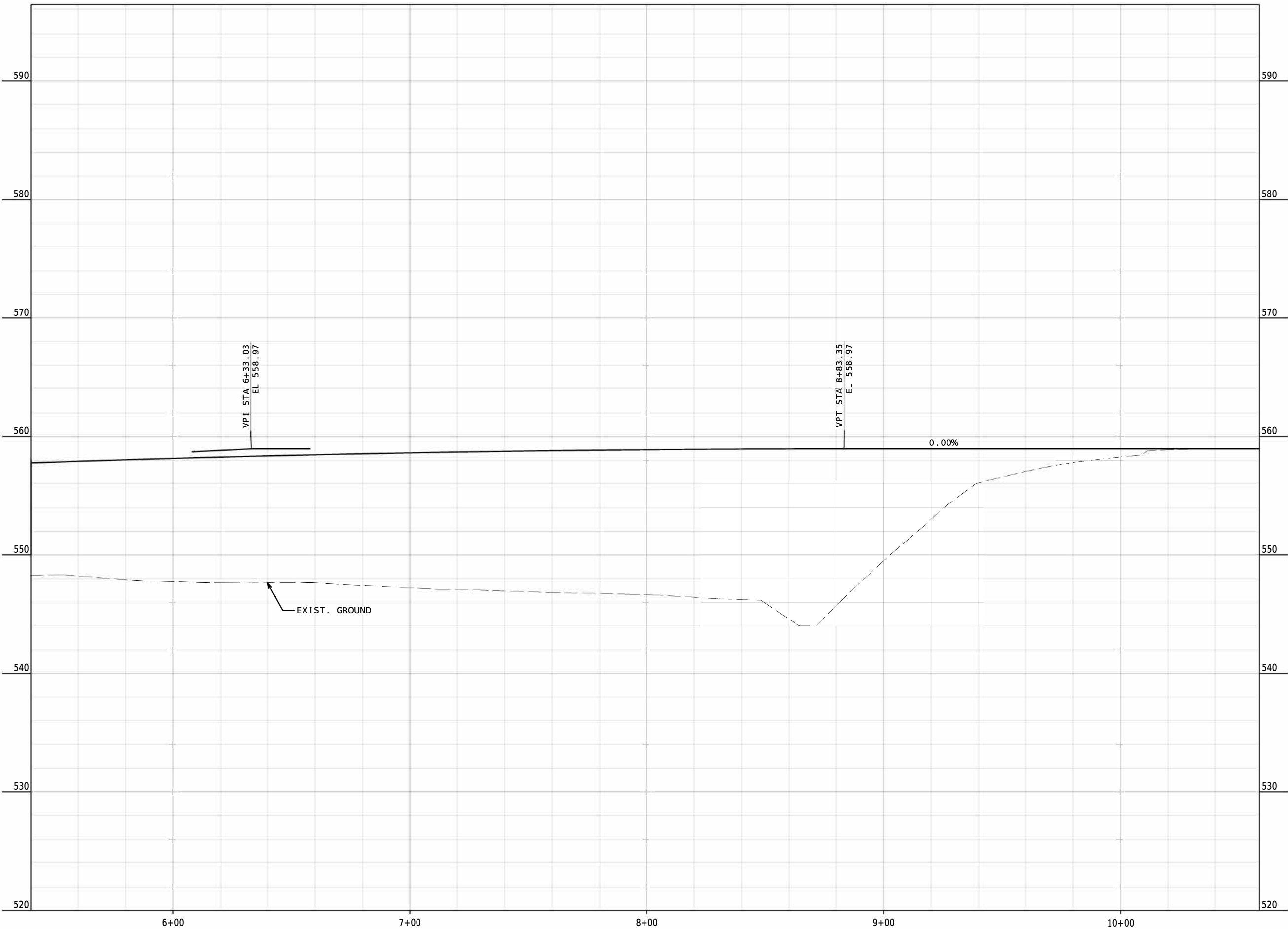
DATE	DESCRIPTION

MISSOURI HIGHWAYS AND TRANSPORTATION COMMISSION



105 WEST CAPITOL  
JEFFERSON CITY, MO 65102  
1-888-ASK-MODOT (1-888-275-6636)

IF A SEAL IS PRESENT ON THIS SHEET IT HAS BEEN ELECTRONICALLY SEALED AND DATED.



DATE PREPARED

ROUTE 54	STATE MO
DISTRICT CD	SHEET NO. XX

COUNTY  
CALLAWAY

JOB NO.  
JCD0170

CONTRACT ID.

PROJECT NO.

BRIDGE NO.

DATE	DESCRIPTION

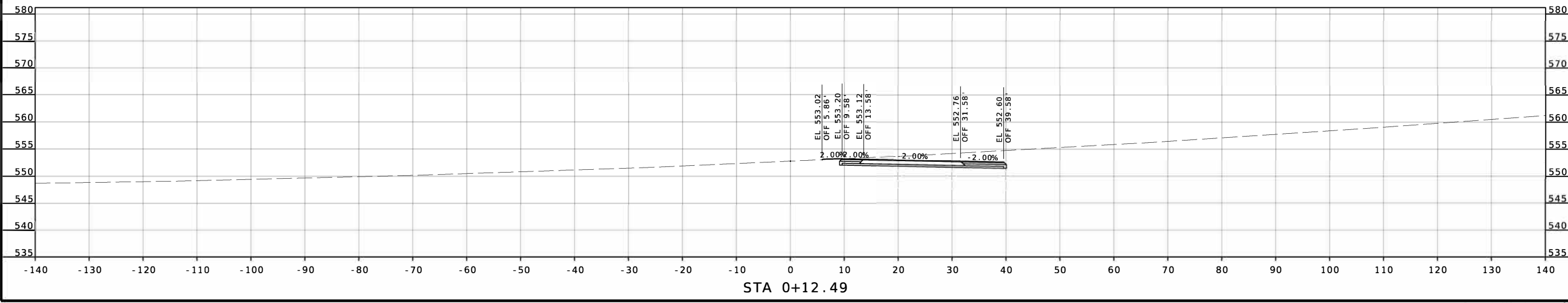
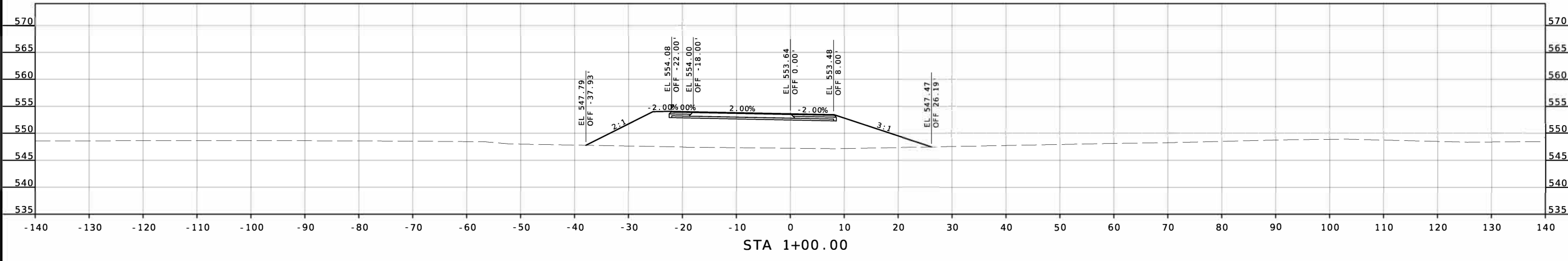
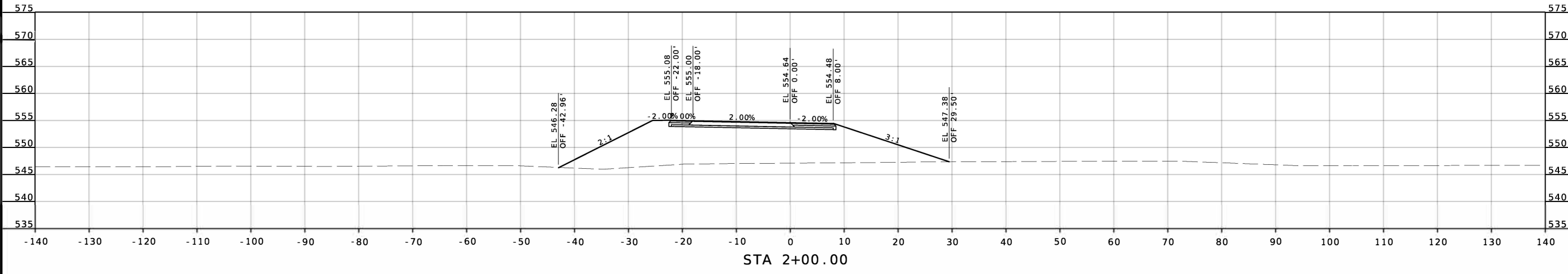
MISSOURI HIGHWAYS AND TRANSPORTATION COMMISSION



105 WEST CAPITOL  
JEFFERSON CITY, MO 65102  
1-888-ASK-MODOT (1-888-275-6636)

IF A SEAL IS PRESENT ON THIS SHEET IT HAS BEEN ELECTRONICALLY SEALED AND DATED.


JOB NO. ON INFORMATION BLOCK WITHIN X-SECTION SHEETS SHOULD BE JCD0170.



DATE PREPARED		5/17/2023	
ROUTE	STATE	ROUTE	STATE
54	MO	54	MO
DISTRICT	SHEET NO.	DISTRICT	SHEET NO.
CD	1	CD	1
COUNTY			
COLE/CALLAWAY			
JOB NO.			
J5P3497			
CONTRACT ID.			
PROJECT NO.			
BRIDGE NO.			

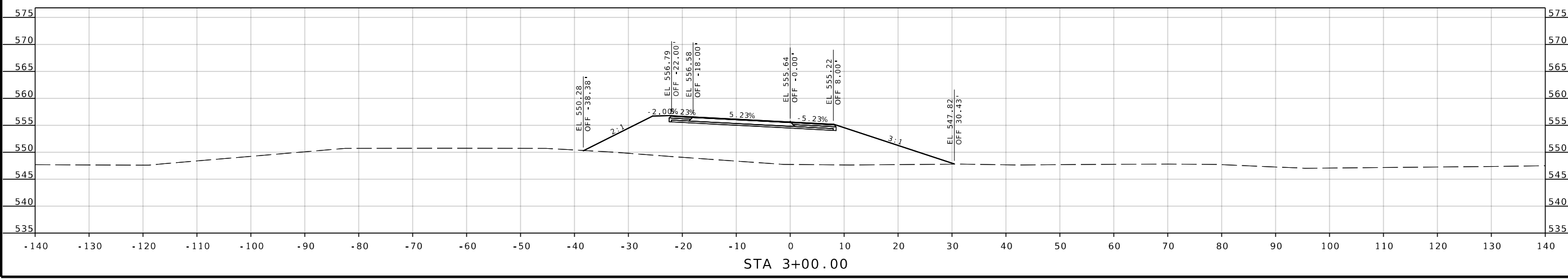
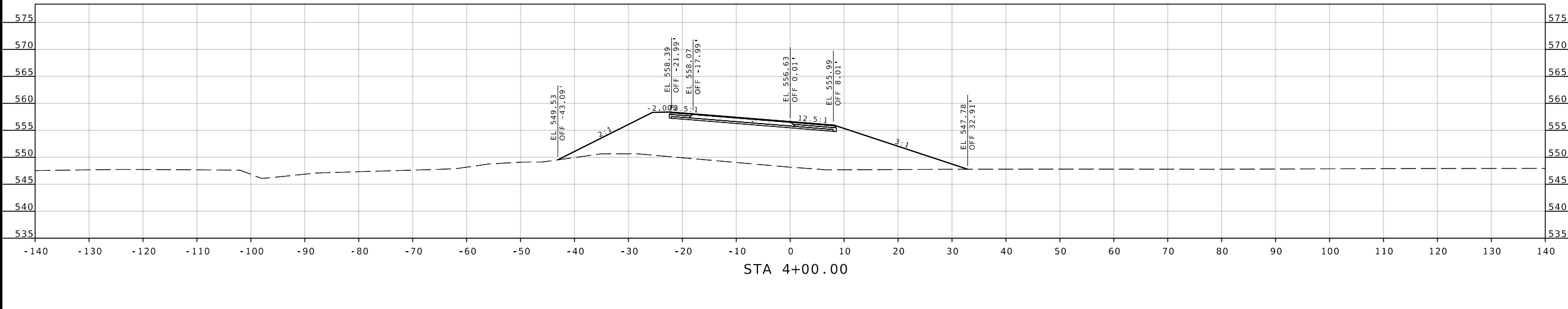
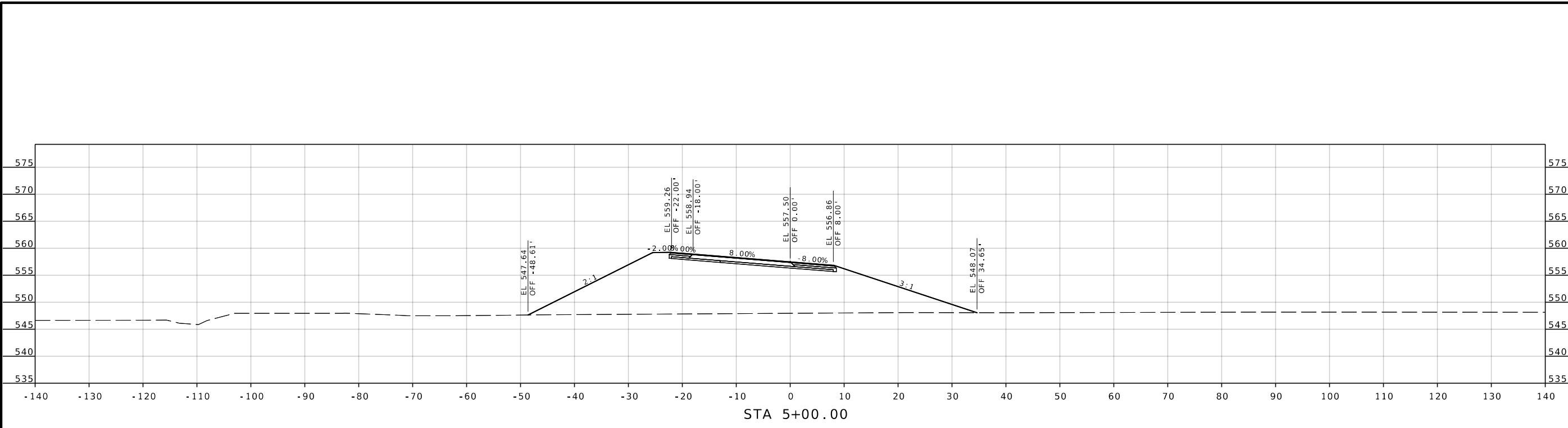
DESCRIPTION	DATE


MISSOURI HIGHWAYS AND TRANSPORTATION COMMISSION



105 WEST CAPITOL  
JEFFERSON CITY, MO 65102  
1-888-ASK-MODOT (1-888-275-6636)

IF A SEAL IS PRESENT ON THIS SHEET IT HAS BEEN ELECTRONICALLY SEALED AND DATED.



DATE PREPARED 5/17/2023	
ROUTE 54	STATE MO
DISTRICT CD	SHEET NO. 2
COUNTY COLE/CALLAWAY	
JOB NO. J5P3497	
CONTRACT ID.	
PROJECT NO.	
BRIDGE NO.	
DESCRIPTION	DATE
MISSOURI HIGHWAYS AND TRANSPORTATION COMMISSION	
 105 WEST CAPITOL JEFFERSON CITY, MO 65102 1-888-ASK-MODOT (1-888-273-6636)	

IF A SEAL IS PRESENT ON THIS SHEET IT HAS BEEN ELECTRONICALLY SEALED AND DATED.

DATE PREPARED  
5/17/2023

ROUTE STATE

54 MO

DISTRICT SHEET NO.

CD 3

COUNTY

COLE/CALLAWAY

JOB NO.

J5P3497

CONTRACT ID.

PROJECT NO.

BRIDGE NO.

DESCRIPTION

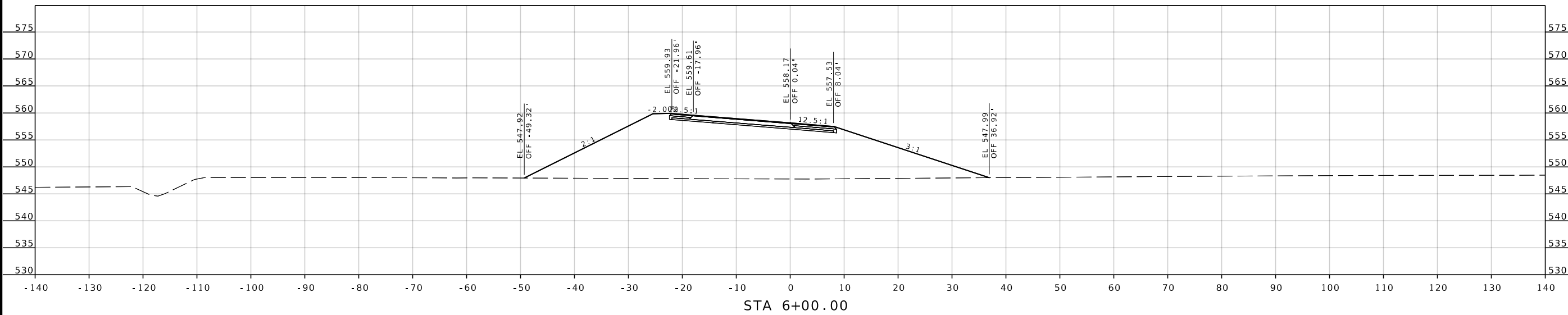
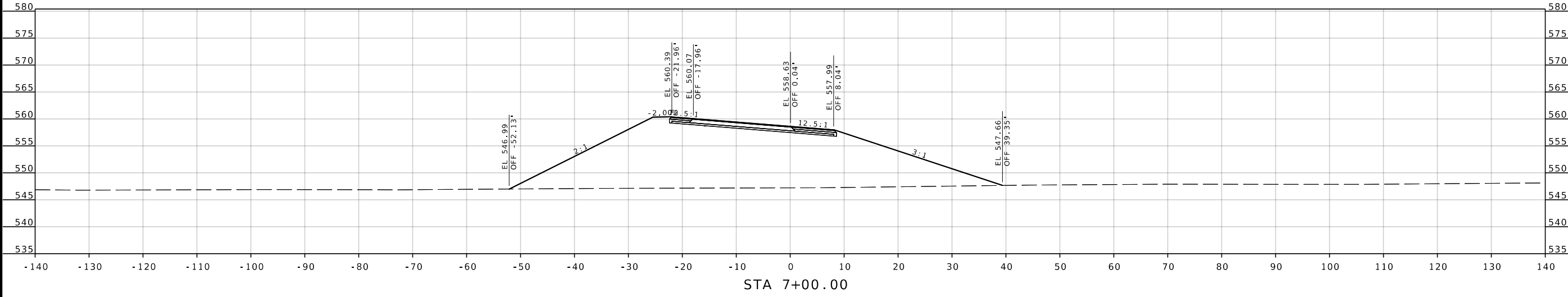
DATE

MISSOURI HIGHWAYS AND TRANSPORTATION  
COMMISSION



105 WEST CAPITOL  
JEFFERSON CITY, MO 65102  
1-888-ASK-MODOT (1-888-275-6636)

IF A SEAL IS PRESENT ON THIS SHEET IT HAS BEEN ELECTRONICALLY SEALED AND DATED.



DATE PREPARED  
5/17/2023

ROUTE STATE  
54 MO

DISTRICT SHEET NO.  
CD 4

COUNTY  
COLE/CALLAWAY

JOB NO.  
J5P3497

CONTRACT ID.

PROJECT NO.

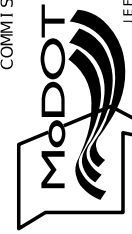
BRIDGE NO.

DESCRIPTION	DATE

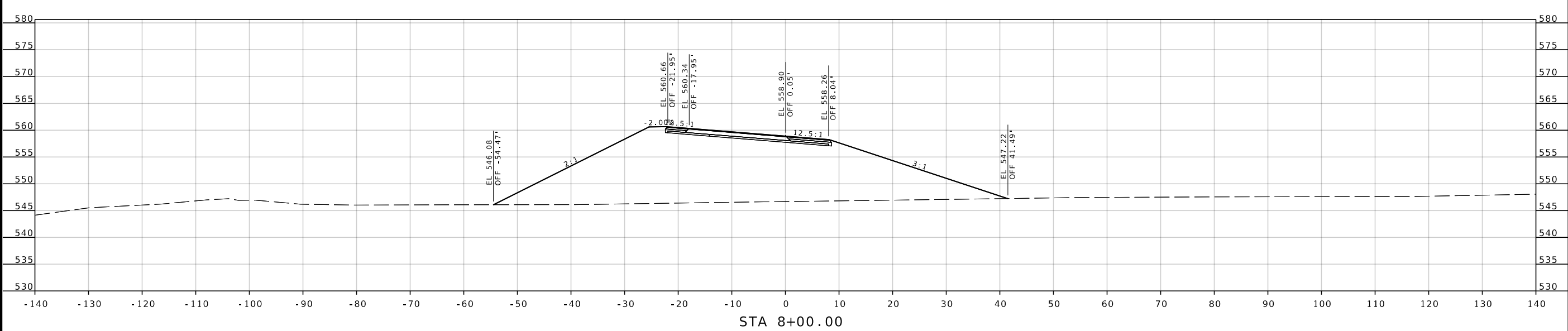
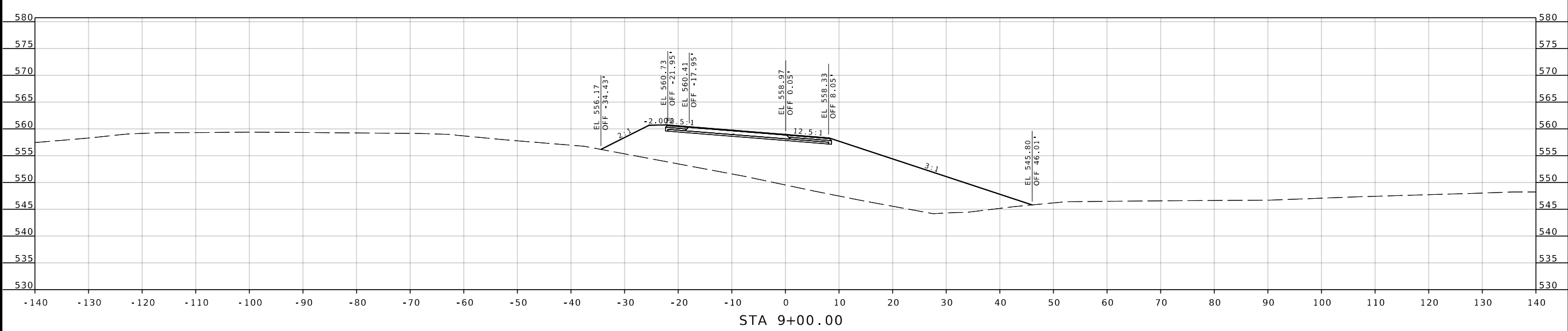
DATE

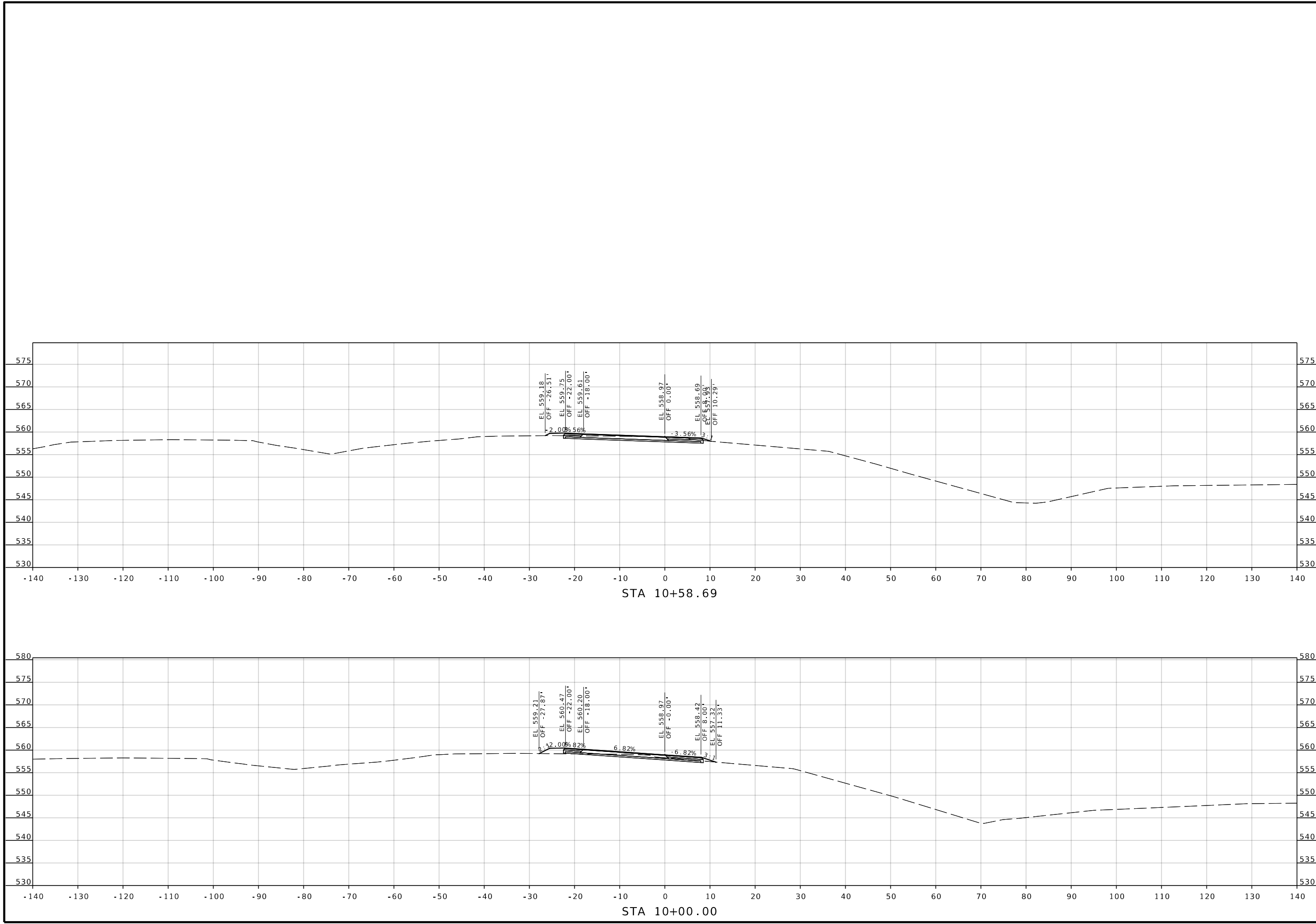
DESCRIPTION


MISSOURI HIGHWAYS AND TRANSPORTATION COMMISSION  
105 WEST CAPITOL  
JEFFERSON CITY, MO 65102  
1-888-ASK-MODOT (1-888-273-6636)



IF A SEAL IS PRESENT ON THIS SHEET IT HAS BEEN ELECTRONICALLY SEALED AND DATED.





DATE PREPARED 5/17/2023	
ROUTE 54	STATE MO
DISTRICT CD	SHEET NO. 5
COUNTY COLE/CALLAWAY	
JOB NO. J5P3497	
CONTRACT ID.	
PROJECT NO.	
BRIDGE NO.	
DESCRIPTION	
DATE	
MISSOURI HIGHWAYS AND TRANSPORTATION COMMISSION	
 105 WEST CAPITOL JEFFERSON CITY, MO 65102 1-888-ASK-MODOT (1-888-275-6636)	

IF A SEAL IS PRESENT ON THIS SHEET IT HAS BEEN ELECTRONICALLY SEALED AND DATED.