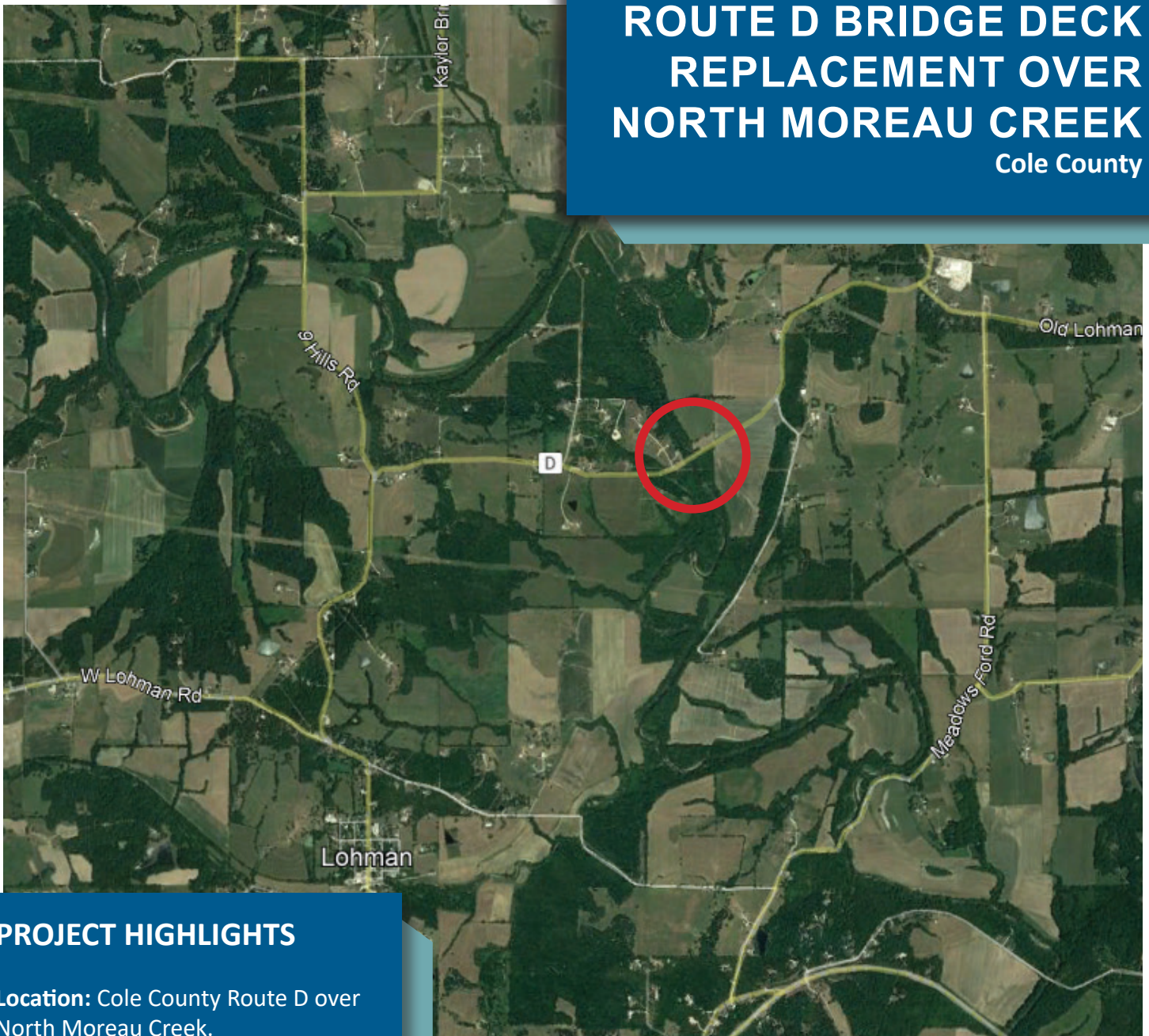


ROUTE D BRIDGE DECK REPLACEMENT OVER NORTH MOREAU CREEK

Cole County



PROJECT HIGHLIGHTS

Location: Cole County Route D over North Moreau Creek.

Traffic impact: Bridge will be closed throughout construction.

Budget: \$1.2 million.

Construction expected: 2024.

Average daily traffic: 1,597 vehicles daily.

Subject to change. Information current as of October 2023.



Scan to visit the project's webpage.



PROJECT DETAILS

Districts Impacted

Central

Counties Impacted

Cole

Project Status

Planning Stage

What work is being planned?

The Missouri Department of Transportation and its contractors are designing a new bridge deck, or driving surface, for Cole County Route D over North Moreau Creek. Installing new guardrails and repaving the bridge approaches is included in the project.

Why is it necessary to replace the bridge deck?

Built in 1965, the supporting structures of the bridge are in good condition. However, the driving surface has deteriorated to a point where deck replacement is necessary. The new driving surface will extend the functional life of the bridge.

What will the project cost?

The estimated total construction cost is approximately \$1.2 million.

How will traffic be affected?

The contractor will close the bridge to all traffic through the completion of the project, which they have 60 calendar days to accomplish. A signed detour will be posted.

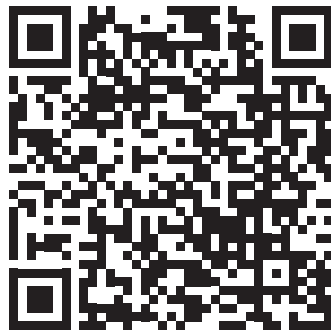
When will the work take place?

The work will go out for bid in January 2024 and construction is expected to be completed by Dec. 1, 2024.

As with all projects that are in the planning stage, these dates are subject to change.

How can I learn more?

You may learn more by contacting us toll-free at 1-888-ASK-MoDOT (275-6636) or visit the project page by scanning the QR code below.



[www.modot.org/
route-d-bridge-deck-
replacement-over-north-
moreau-creek-cole](http://www.modot.org/route-d-bridge-deck-replacement-over-north-moreau-creek-cole)



Project Manager Mia Peters
CDCR@modot.mo.gov
888 ASK MODOT (1-888-275-6636)