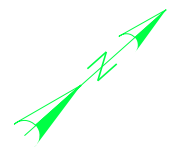
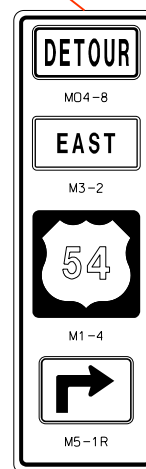
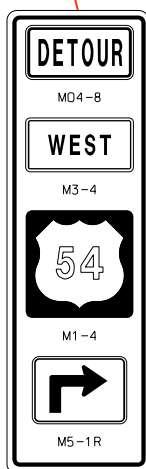
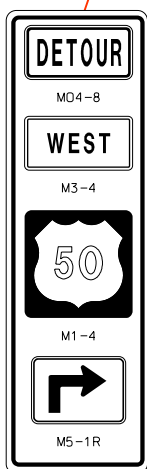
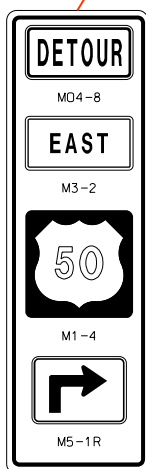
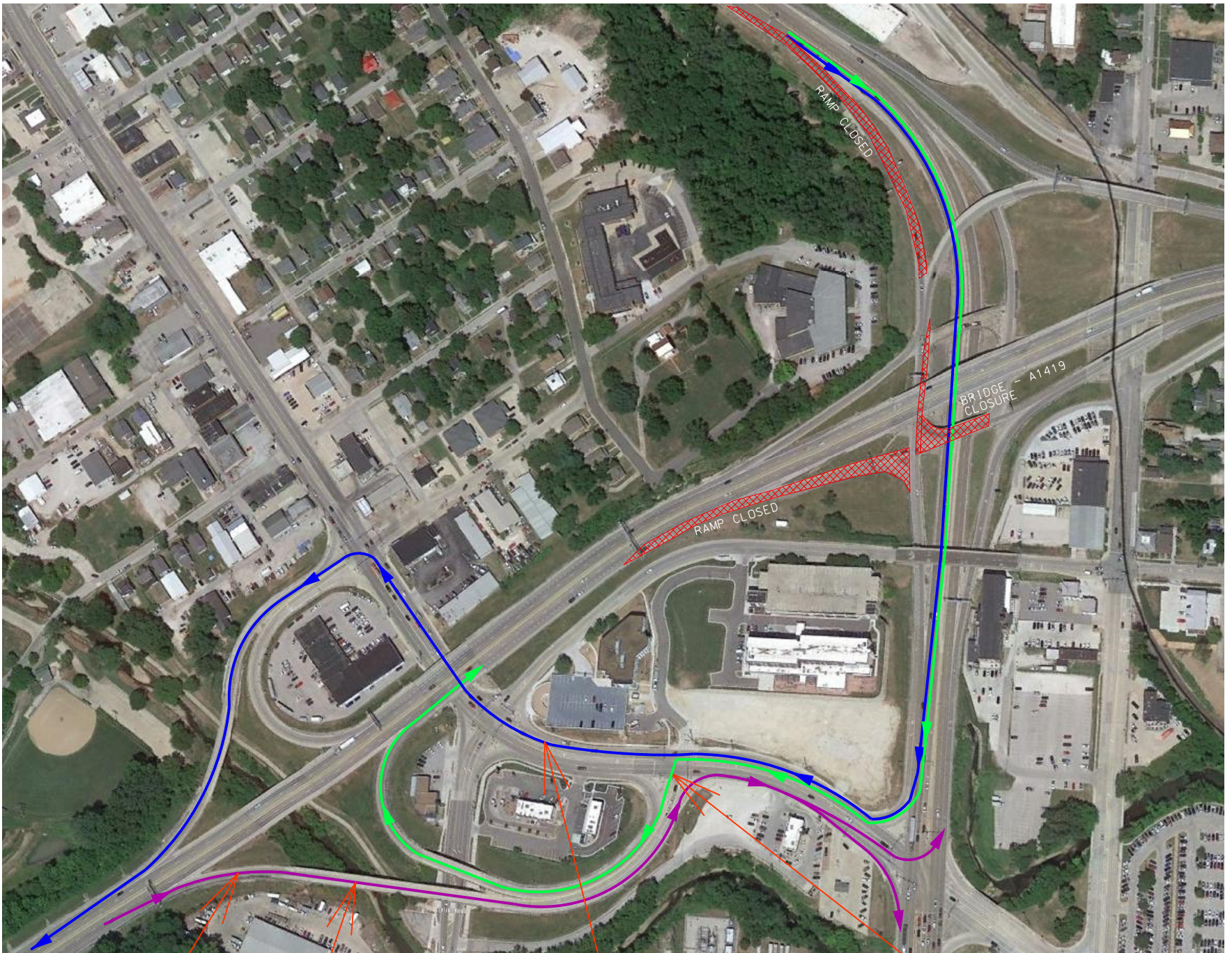


COLE COUNTY ROUTE 50E TO 54E OVER US 50 BRIDGE PROJECT ROAD CLOSURE WITH SUGGESTED ALTERNATE ROUTES



- Detour route for US 54E to US 50E/W approximately 0.4 miles
- Detour route for US 50E to US 54E approximately 0.7 miles
- Detour route for US 50E to US 54W approximately 0.9 miles

For more information: www.modot.org/central
 573.751.3322 or 1.888.275.6636 (toll-free)
 Facebook: MoDOT.Central / Instagram: @Modot_Central

