

ADDENDUM NO. 2

TRANSPORTATION ENHANCEMENT DOWNTOWN STREETScape IMPROVEMENTS FOR THE CITY OF ASH GROVE, MISSOURI

PROJECT #STP-9900(826) H-R # 07-216 DATE March 26, 2013

This addendum shall be considered as part of the Plans and Specifications of the above mentioned project. All items below should be included in the bids by all bidders. General Contractor's submitting bids will be responsible for notifying all suppliers and sub-contractors used in his bid of this addendum and items mentioned which affect them.

GENERAL INFORMATION:

1. Contractor shall be required to saw cut areas along the face of the building as close to the building as is possible and also the asphalt and concrete street in locations required for new construction. City will then remove the existing concrete sidewalks and curbs, concrete street pavement and asphalt pavement to an approved landfill although the City will not remove any material below the concrete or asphalt pavement or trenching waste below the new construction. The Contractor will be responsible for removing any material under these surfaces and shall refill and compact for a suitable base under sidewalks and streets.
2. If the Contractors feel it will be necessary for additional traffic control in Alternates 1, 2 and 3, he shall include them in Alternates as follows:
 - a. Alternate #1: Contractor shall include traffic control under Drainage Item 9.2, Trenching and Compacted Fill.
 - b. Alternate #2: Contractor shall include traffic control under Drainage Item 8.2, Trenching and Compacted Fill.
 - c. Alternate #3: Contractor shall include traffic control under Electrical Item 7, Electrical Conduit and Wire Trenching.
3. The Contractor shall submit his Bid in accordance with Bidder's Checklist entitled **Final Checklist Before Submitting Bid** included in the Project Manual and shall disregard items required to be submitted with Bid as shown in Bid Proposal sheet 6 of 9.
4. Alternates #4 and #5 are removed from the bidding. Contractors are not required to complete the pricing for these two alternates.
5. The City will eliminate the existing water main conflict at the crossing with the 15" RCP.
6. The City of Ash Grove will resolve any water or sewer line conflicts that might occur in relation to the construction; however, they will not be responsible for broken or damaged utility lines caused by the Contractor's equipment.

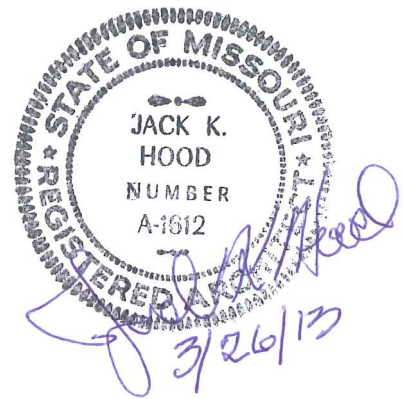
PLAN SHEETS:

1. Plan Sheet C2.5, Detail #6, shall be modified regarding the depth of cover for the electrical conduits which are located on MoDOT right-of-way, which shall be 2'-6" rather than the 2'-0" shown.
2. Plan Sheet C1.6 indicates an electrical conduit run crossing Main Street, west of Rte F. The plan location shall be moved to approximately 32 ft west of the center line of Rte F onto City right-of-way. In the center of Main Street an 8" cast iron water main is located that is 27"± deep. The conduit depth shall be modified to provide a 6" clearance above the water main. See attached relocation drawing.

ATTACHMENTS:

One (1) 8-1/2" x 11" sheet.

The personal seal of Jack K. Hood, Architect, is intended to authenticate only the "Architectural" items of this addendum. I hereby disclaim any responsibility for all other plans, specifications, reports or other documents or instruments relating to or intended to be used for any part of this project, unless specifically authenticated by my personal seal.

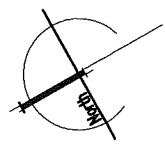
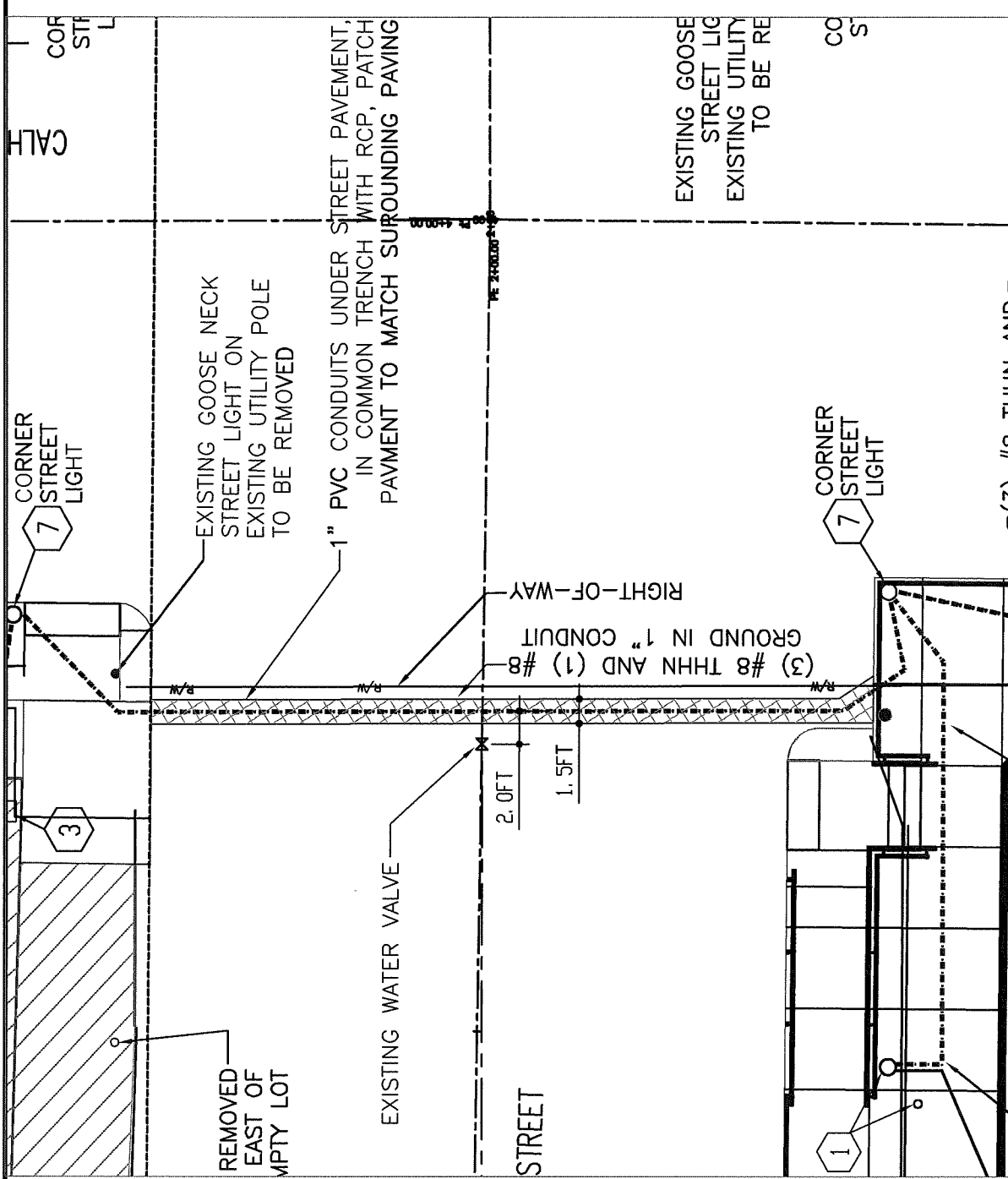



END OF ADDENDUM

HOOD-RICH, INC., Architects and Engineers
801 S. Glenstone, Springfield, MO 65802 (417) 862-4483

INTERSECTION ELECTRICAL PLAN

SCALE: 1" = 10'



<div><p>HOOD-RICH, INC. ARCHITECTS AND ENGINEERS 801 SOUTH GLENSTONE AVENUE SPRINGFIELD, MISSOURI www.hoodrich.com</p></div>	<div><h1>DOWNTOWN STREETSCAPE IMPROVEMENTS</h1><p>for CITY OF ASH GROVE STP-9900(826)</p></div>			ORIG.	Site Plan.dwg
	<div><h2>REVISED LOCATION OF NEW CONDUIT TRENCH</h2><p>TO AVOID MO-DOT RIGHT-OF-WAY</p></div>			SCALE:	1" = 10'
				AS:	1 of 1
				DRAWING:	ADD # 2
			DATE:	March 26, 2013	