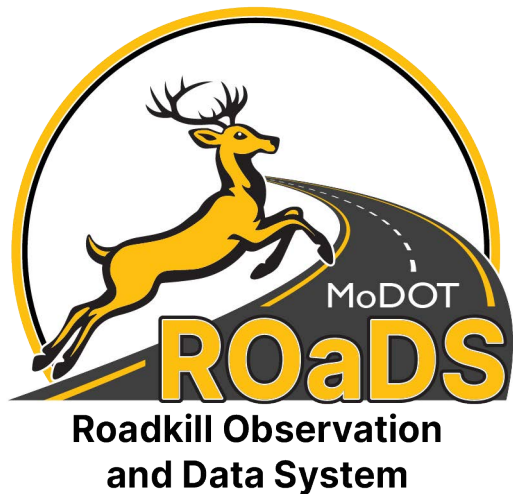


Roadkill Observation and Data System



The National Park Service and US Fish and Wildlife Service partnered with the Western Transportation Institute – MSU to develop a standardized WVC data collection system for federal land management agencies.

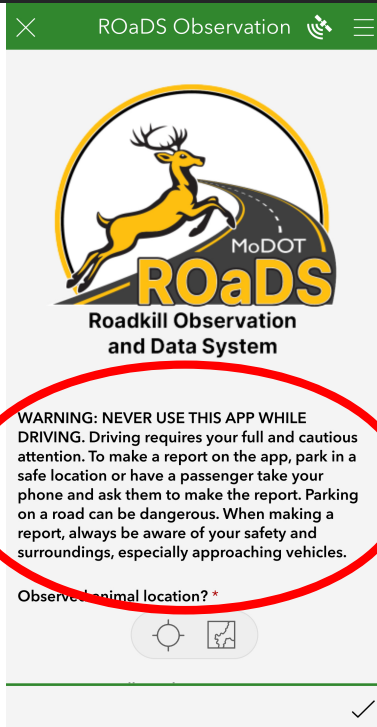
Now, through a partnership with The Center for Large Landscape Conservation, this system is available for Citizen Science use in Missouri!



How to Get the App and Survey Form:

1. Go to the App Store or wherever you usually download your apps.
2. Search for the free "Survey 123" app and select "GET" for Apple devices and "Install" on Android.
3. Once the App has downloaded, click "continue without signing in" and allow camera access to scan the QR code.
4. Open the form using Survey123. Please Read the training materials for data entry instructions.
5. Now you're ready to start collecting data!

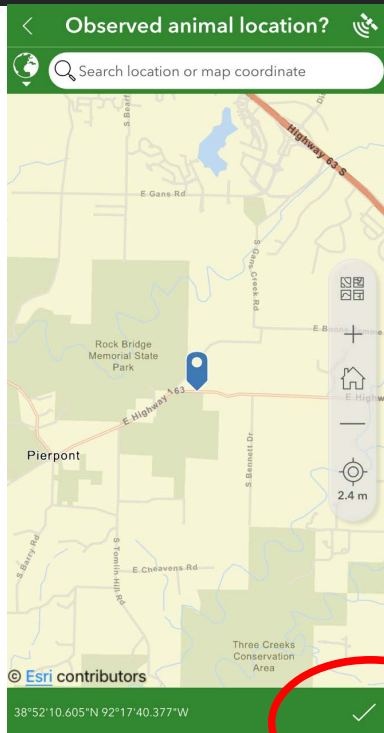




BE SAFE!




Always Use Caution When Collecting Data on Roads

It is best to have a passenger in the vehicle
collect data for you





Step 1: Location

- Your location should automatically show on the map. You can also adjust this manually if necessary.
- To lock in your location you **MUST** click the check mark in the bottom right corner.
- Once the location is locked in, it is saved and you can fill in the rest of the form from a safer location if necessary!

 ROaDS Observation  

Photo

Type of animal observed? *

Whitetail deer

What is your confidence in this species' identification? *

☐ High

☐ Medium/Low

How many animals were observed? *

— 1 ⊗ +


Animal(s) status? *

☐ Dead

☐ Alive crossing road

☐ Alive next to road (<100 yards from road)

Comments?



After locking the location, fill in the rest of the information:

Photo - The photo is optional. Please only take a photo if you are in a safe location!

Type of Animal Observed - Choose from the drop-down list of common species. If you don't see the species you are looking for on the list, you can select "Other" and then will be given space to type in the species. Only one type of animal can be entered at once. If two or more species are seen together you will need to make an additional entry for each species. If you are unable to ID the species you observed, please select "Unknown."

Confidence Level - How positive are you that you've correctly identified the species? Sometimes this can be really challenging with roadkill!

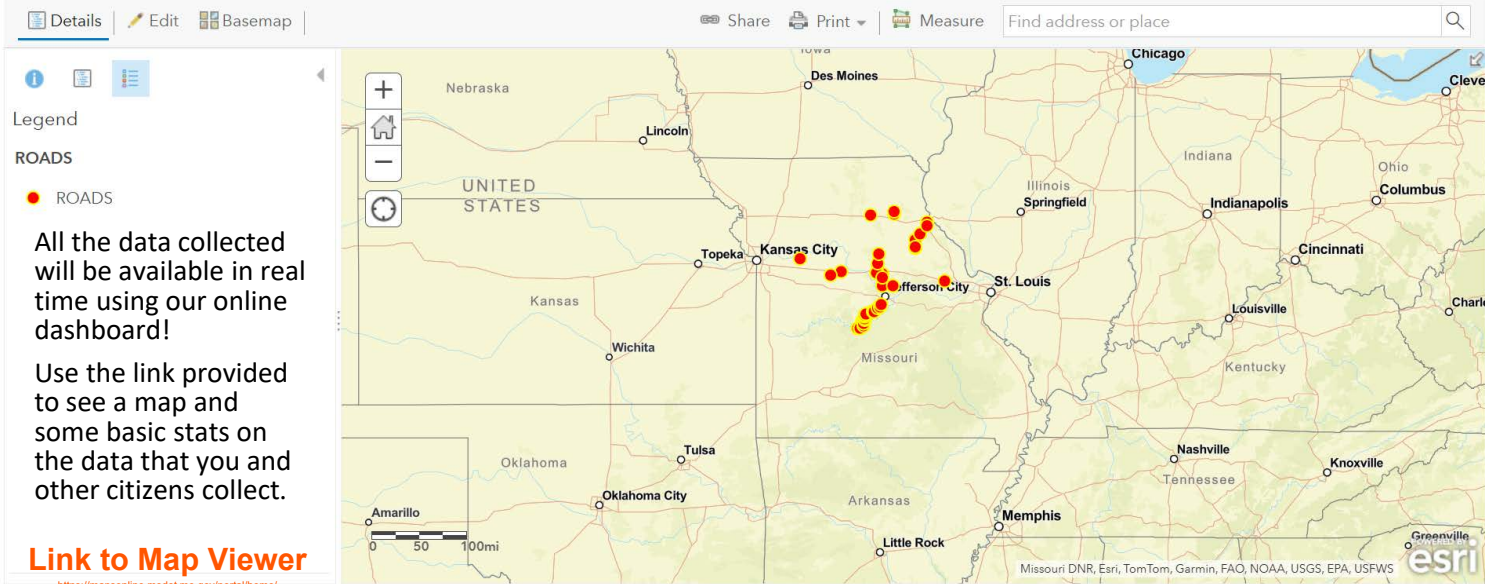
Number of Animals - This is just for the one species you are making a record for.

Animal Status - **REMEMBER**, we want to know where animals are approaching/trying to cross the road as well as where they are getting hit!

Comments - If you are making multiple entries for different species please make a note of that! If you are confident in your identification skills and can accurately identify the animal down to the species level, you can indicate that here as well (Latin or common name is acceptable).

Also, please enter your 3 initials in the comment box so that we can track how many different people have contributed to this effort.

How to view the data



Please contact Caleb Knerr with any questions at Caleb.Knerr@modot.mo.gov