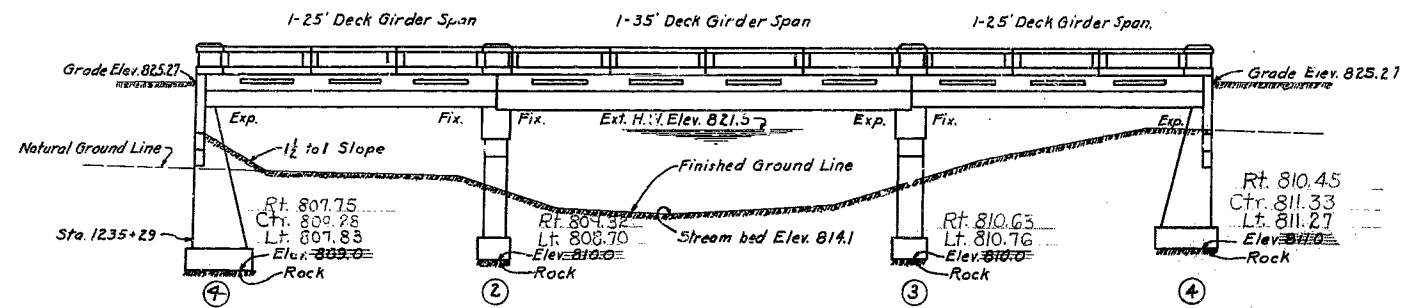


Note: For details of handrail see 25'A, 35'B, and 25'C on Std. C6501 R2

MISSOURI STATE HIGHWAY DEPARTMENT

FED. ROAD DIST. NO.	STATE	FED. AID PROJ. NO.	FISCAL YEAR	SHEET NO.	TOTAL SHEETS
5	MO.	WPSO 682A (SD)	19		

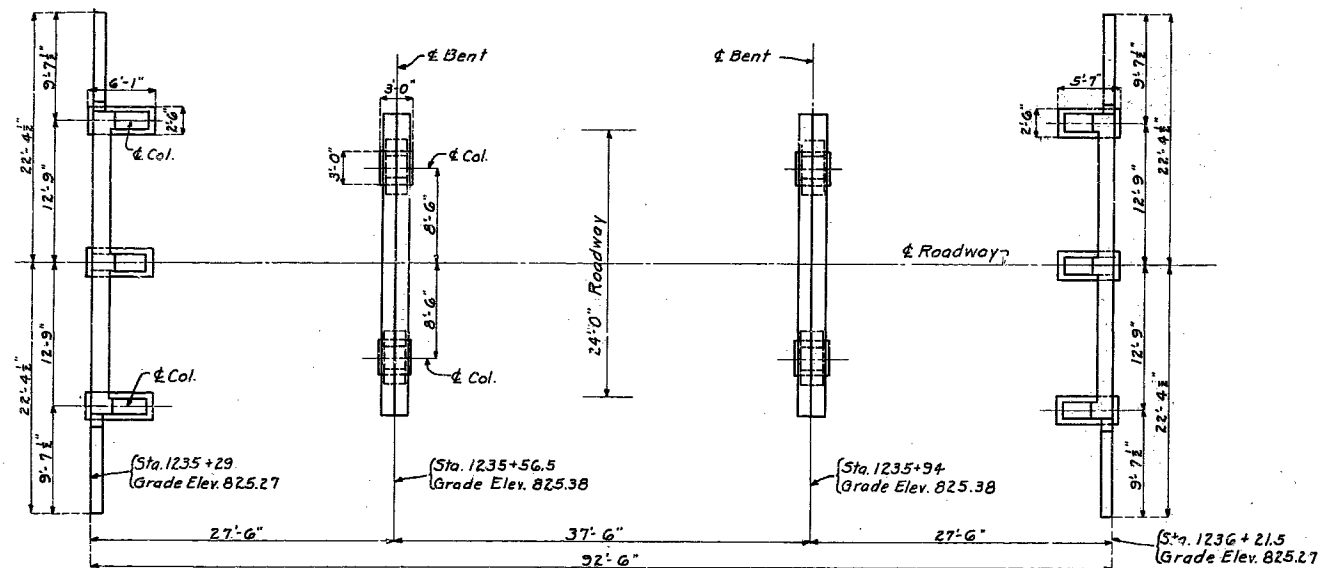
FINAL PLANS



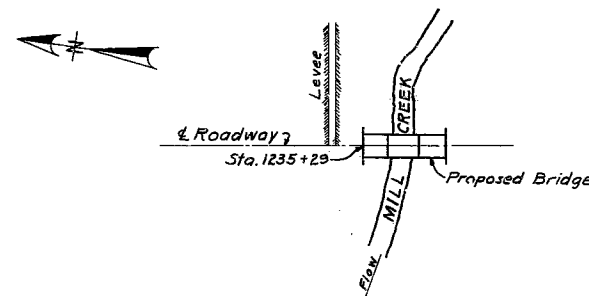
Note: Channel to be opened above and below site as shown on road plans.

GENERAL ELEVATION

Note: All loose, shelly, or disintegrated rock shall be removed and the footings placed on hard, solid undisturbed rock. If soft rock or shale is encountered, the footings shall be carried at least 18" into and against the vertical faces of same.



PLAN



LOCATION SKETCH

ESTIMATED QUANTITIES				FINAL QUANTITIES
Item	Superstr.	Substr.	Total	
Bridge Excavation Class 1 Cu.Yds.		75	75	31.7
Bridge Excavation Class 2 Cu.Yds.		90	90	85.6
Concrete Class "A" Cu.Yds.	9.5		9.5	9.5
Concrete Class "B" Cu.Yds.		58.6	58.6	59.34
Concrete Class "X" Cu.Yds.	91.4		91.4	91.4
Reinforcing Steel Lbs.	25290	1180	32470	32470
Cl. 2 Bridge Etc. below Plan Elev. Cu.Yds.				8.1
Drilling Test Holes Lin. Ft.				42

Bridge Excavation above Elevation 815.5 will be paid for as Class 1 Bridge Excavation.
Bridge Excavation below Elevation 815.5 will be paid for as Class 2 Bridge Excavation.

BILL OF REINFORCING STEEL FOR SUBSTRUCTURE									
No.	Size	Length	Mark	Location	Bending Sketches and Cutting Diagrams				
Bents No. 1 and No. 4									
42	1/2"	5'-9"	D1	Footin.					
24	3/4"	8'-6"	F1	Haunch					
12	3/4"	14'-9"	H1	Wing					
6	3/4"	25'-9"	H2	"					
6	3/4"	26'-9"	H3	Rearm					
4	3/4"	26'-9"	H4	"					
6	3/4"	26'-9"	H5	"					
8	3/4"	14'-9"	T1	Wing					
12	3/4"	14'-0"	T2	"					
6	3/4"	26'-9"	T3	Beam					
10	3/4"	8'-0"	V1	Wing					
21	3/4"	12'-0"	V2	Col. No. 1					
21	3/4"	10'-0"	V3	Col. No. 4					
9	3/4"	21'-6"	V4	Col. No. 4					
4	3/4"	26'-9"	H6	Beam					
46	3/4"	11'-3"	U1	"					
4	3/4"	7'-6"	H7	"					
4	3/4"	7'-6"	H8	"					
12	3/4"	22'-6"	V5	Col. No. 1					
					Bents No. 2 and No. 3				
16	3/4"	5'-9"	D1	Footin.					
16	3/4"	8'-6"	F1	Haunch					
16	3/4"	9'-3"	F2	"					
32	3/4"	28'-9"	G1	Beam					
4	3/4"	26'-9"	G2	"					
32	3/4"	8'-0"	P1	Column					
16	3/4"	10'-9"	P2	"					
68	3/4"	10'-0"	U2	Beam					

Note: Dimensions given are along center line of bars and are for computed lengths.
Reinforcing bars 3/4" or over in diameter, which are bent to an angle greater than 90° shall be of structural grade.
For bill of reinforcing steel in superstructure see Sheets No. 3 and No. 4.

GENERAL NOTES

Concrete in handrail to be Class "A". Concrete in slabs, curbs, and girders to be Class "X". All other concrete to be Class "B".
Where rubber compound is specified on plans for use in partition and expansion joints, the pre-molded joint shall be securely stitched to one face of concrete with copper wire.
Floor slab for each span shall be constructed full length and width at one operation. No longitudinal or transverse construction joints will be permitted.
Bridge excavation in accordance with Section 1 of Standard Specifications issued April, 1930.
Exposed edges to be beveled 1/4" where no other bevel is noted.
Only sufficient camber to be used in construction to insure against settlement below lines given as finished grade. No permanent camber required in individual spans.
All concrete shall be proportioned by the weight proportioning method. See Special Provisions.
Bar supports and spacers will be required for reinforcing steel in superstructure. See Standard C110R and Special Provisions.
Design Specifications A.A.S.H.O.
Loading H-10 A.A.S.H.O. One lane.
Reinforcing Steel Stress 16000 #/sq. in.
Concrete Class "A" 900 #/cu. yd.
Concrete Class "B" 650 #/cu. yd.
Concrete Class "X" 150 #/cu. yd.

B.M. Elev. 821.87 N&W in Root 10" Elm 90' Lt. Sta. 1234+70.
B.M. Elev. 820.09 N&W in 16" Walnut 130' Lt. Sta. 1235+72.

BRIDGE OVER MILL CREEK

STATE ROAD FROM LEBANON SOUTHEAST
ABOUT 24.0 MILES S.E. OF LEBANON
PROJECT NO. WPSO 682A (SD) STA. 1235+29

LACLEDE COUNTY

SUBMITTED BY *M.R. Lark* DATE 1/7/36
APPROVED BY *T.H. Cutler* DATE 1/7/36
BRIDGE ENGINEER
CHIEF ENGINEER

STD. C6501R2
STD. C110R
T-672

Note: This drawing is not to scale. Follow dimensions.

Sheet No. 1 of 5

FA.

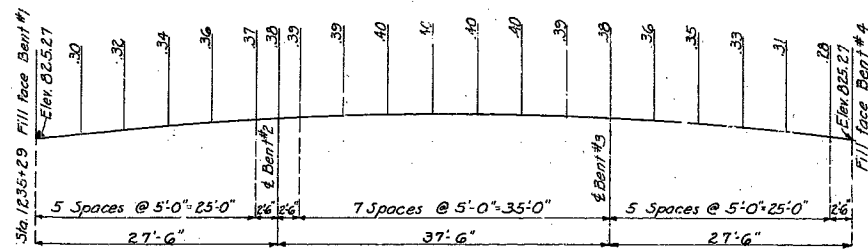
328

5-1-35-36
Drawn Oct. 1935 by A.F.H.
Traced Oct. 1935 by W.A.P.
Checked Dec. 1935 by *W.A.P.*

MISSOURI STATE HIGHWAY DEPARTMENT

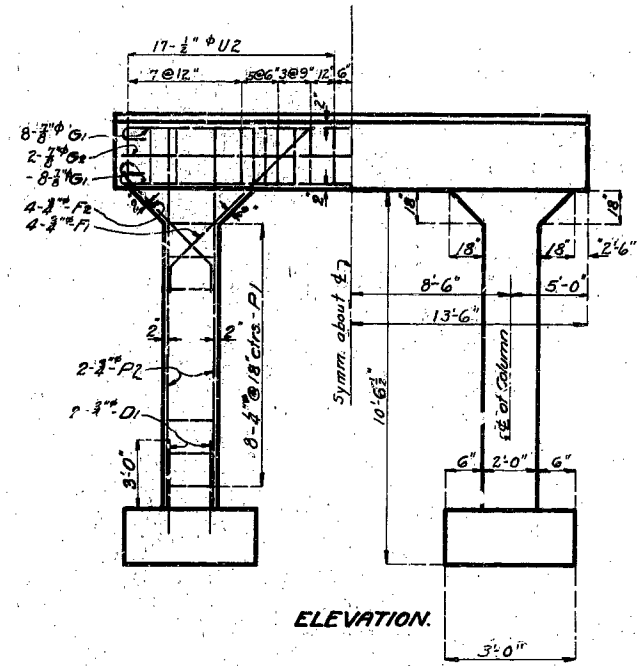
STATE ROAD DIST. NO.	STATE	FED. AID PROJ. NO.	FISCAL YEAR	SHEET NO.	TOTAL SHEETS
5	MO.	WPS0682A(30)	19		

FINAL PLANS

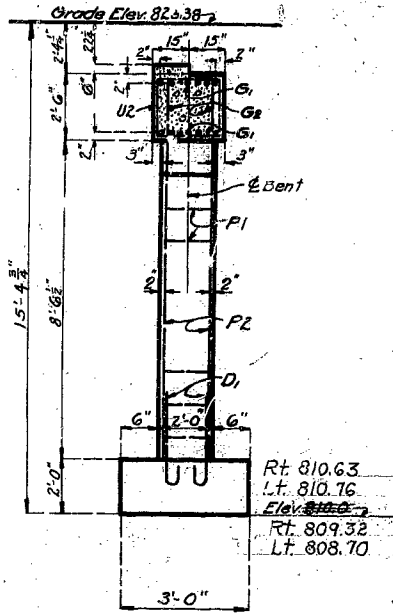


GRADE ELEVATIONS ON ROADWAY

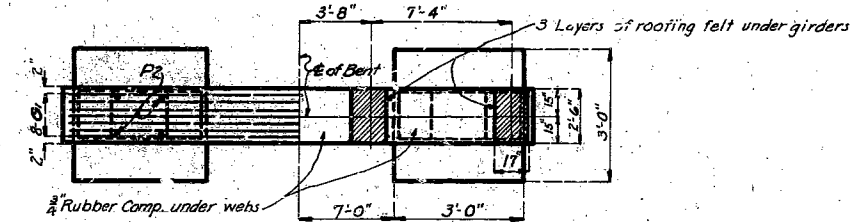
Note: Top and bottom of slab, top of curb, and bottom of girders to be built parallel to grade. All bearings to be horizontal.



ELEVATION.



SECTION AT E.



PLAN.
DETAILS OF BENTS NO. 2 & 3

BRIDGE OVER MILL CREEK
STATE ROAD FROM LEBANON SOUTHEAST
ABOUT 24.0 MILES S.E. OF LEBANON
PROJECT NO. WPS0682A(30) STA. 1235+29
LACLEDE COUNTY

FINISHED

FINISHED

CONSTRUCTION CHANGES NOTED HEREON

T-672

FINAL PLANS

Assembled Oct. 1935 By A.F.K. & W.A.P.
Checked Dec. 1935 By J.L.
Drawn Feb. 1925 By J.L.
Checked April 1925 By J.L.

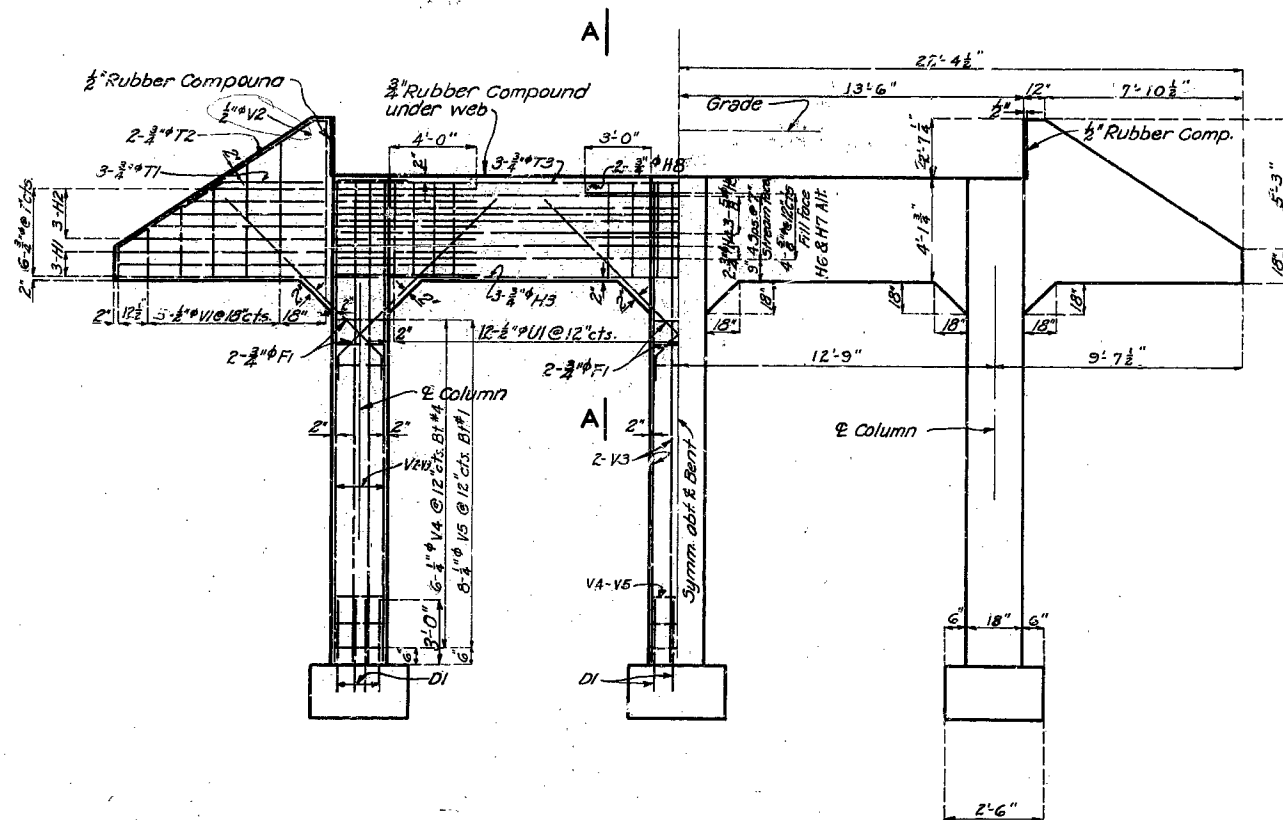
Note: This drawing is not to scale. Follow dimensions.

Sheet 2 of 5

329

033

FINAL PLANS:



ELEVATION

22'-4"

3'-8" 7'-4" 13'-6" 12" 7'-10 1/2"

5-VI H1-2 2-V2-V3 T3 H6-7 2V2-V3 H3 H4-5 V2-V3

1/2" Rubber Compound

3/4" Rubber Comp. under web

1/2" Rubber Compound

3 Layers of roofing felt under girder

Girder

Bent #1 6'-1" Bent #4 5'-7"

3" 11'-3" 18" 11'-6" 2'-6"

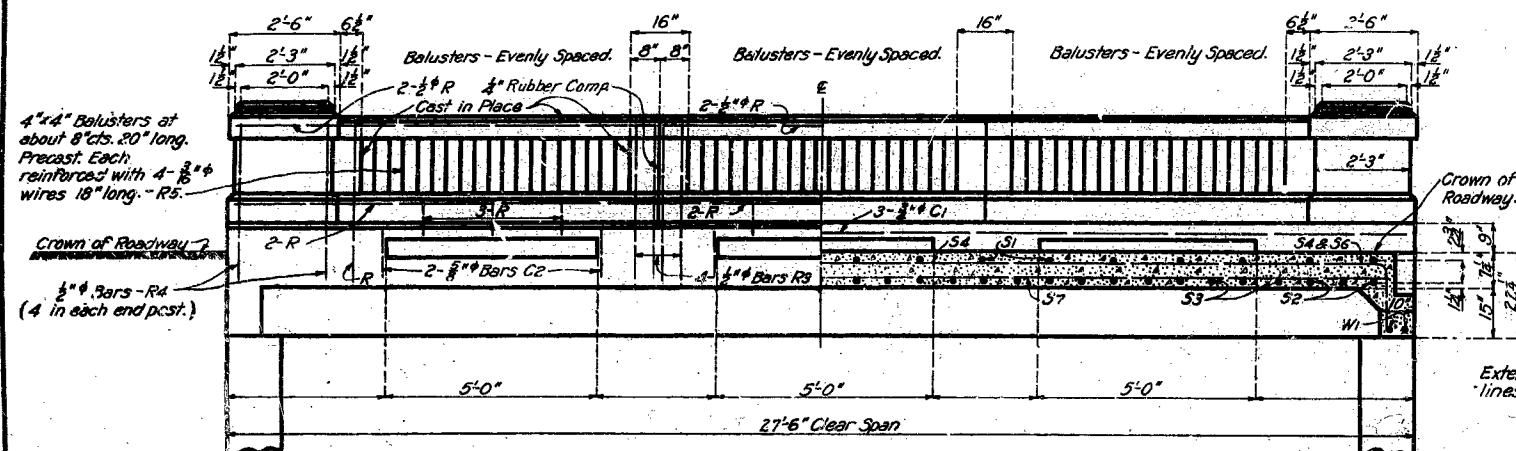
DETAILS OF BENTS NO. 1 & 4

FINISHED

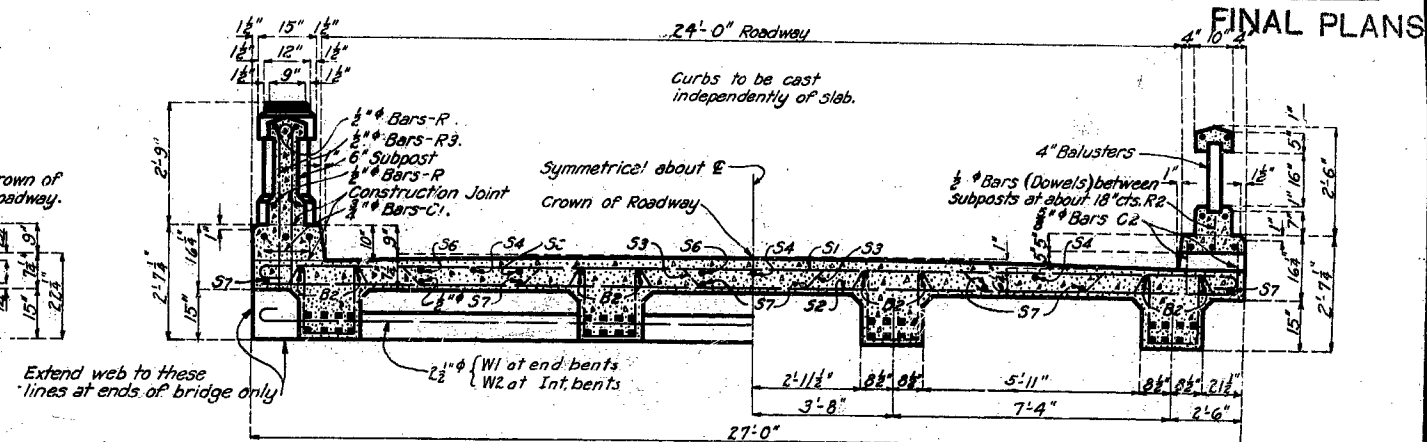
FINAL PLANS 1-31-35

T-672

FED. ROAD DIST. NO.	STATE	FED. AID PROJ. NO.	FISCAL YEAR	SHEET NO.	TOTAL SHEET.
5	MO.	WPSO 685A (30)	10		

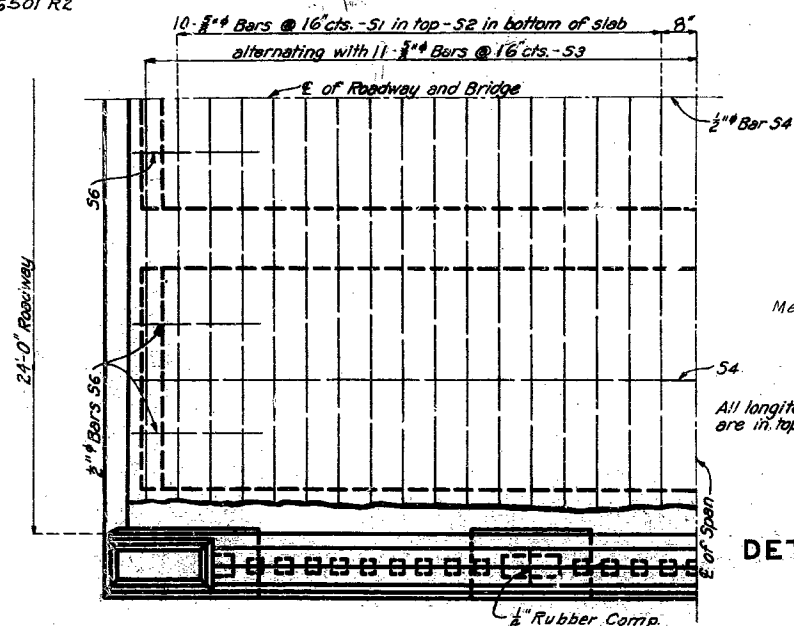


HALF SIDE ELEVATION

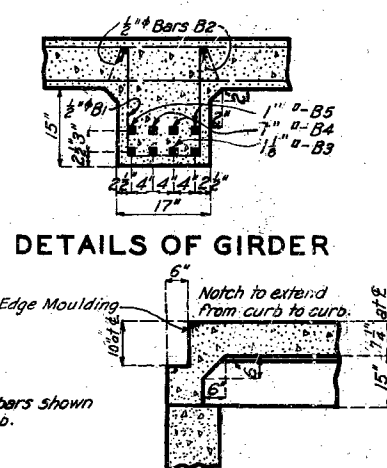


SECTION AT ABUTMENT

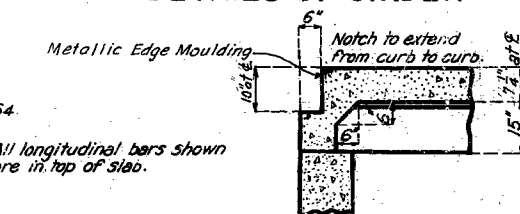
SECTION THRU SPAN



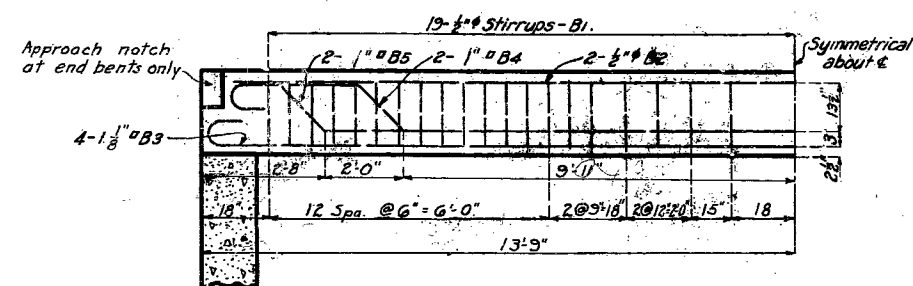
ONE QUARTER PLAN



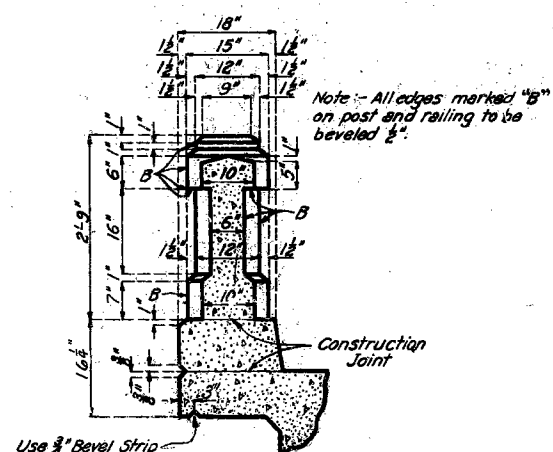
DETAILS OF GIRDER



DETAILS OF NOTCH FOR APPROACH SLAB



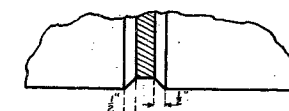
GIRDER REINFORCEMENT



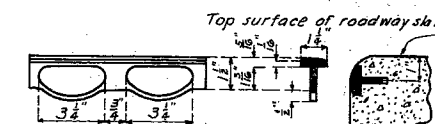
SECTION THRU RAIL
AT SUBPOST

[illegible]

Note:- Dimensions are given along \varnothing or bars and are for computed lengths.
Reinforcing bars $\frac{3}{8}$ " in diameter or over, which are bent to an angle greater than 90° , shall be of structural grade.
Reinforcing bars in above unit: to be billed and tagged separately.



DETAILS OF BEVEL FOR RUBBER COMPOUND JOINTS



METALLIC EDGE MOULDING

Note: Use bevel as shown for exposed faces of all joints consisting of rubber compound except of top surface of roadway slab. Use edging tool with $\frac{1}{2}$ " radius at top surface of roadway slab each side of rubber compound joint.

Note: An approved equivalent may be substituted for edge moulding shown above.

BRIDGE OVER MILL CREEK

STATE ROAD FROM LEBANON SOUTHEAST

ABOUT 24.0 MILES S.E. OF LEBANON

PROJECT NO. WPSO 682 A (SD) STA. 1235 + 29

LACLEDE COUNTY

FINISHED

FINISHED

Assembled Oct. 1935 by A.F.H. & W.A.P.
Checked Dec. 1935 by *R.A.*
Drawn April 1929 by R.J.G.
Checked May 1929 by *C.B.*

Note: This drawing is not to scale. Follow dimensions.

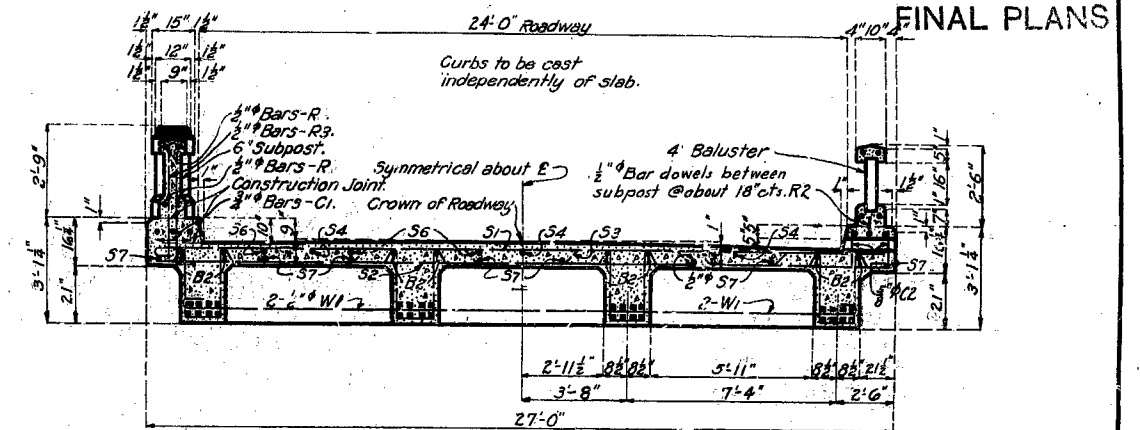
Sheet No. 4 of 5

FA.

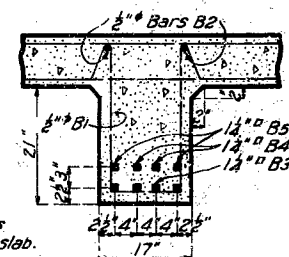
NO CONSTRUCTION CHANGES

N CHANGES T-672
FINAL PLANS

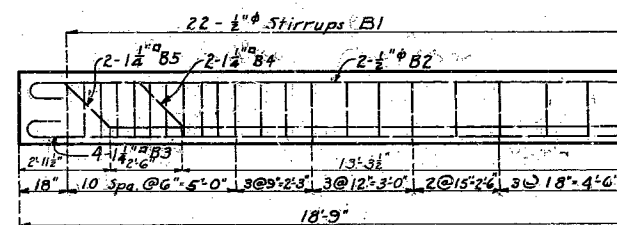
FED. ROAD DIST. NO.	STATE	FED. AID PROJ. NO.	FISCAL YEAR	SHEET NO.	TOTAL SHEETS
5	MO.	41P33 682A(50)	19		



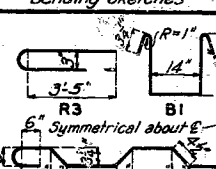
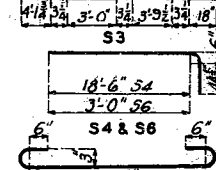
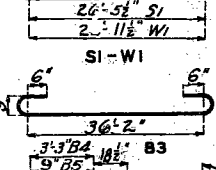
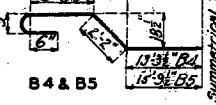
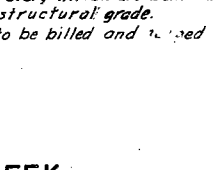
SECTION THRU SPAN



ONE QUARTER PLAN



The diagram shows a rectangle with a vertical line segment through its center, dividing it into two equal halves. The diagonals of the rectangle are drawn, intersecting at the center. This construction divides the rectangle into four congruent right triangles, each with a right angle at one of the corners of the rectangle. The hypotenuses of these triangles are the diagonals of the rectangle.

BILL OF REINFORCING STEEL FOR 35' D.G.SPAN					Bending Sketches	
No.	Size	Length	Mark	Location		
8	1" #	10'-9"	R358	Rail		
32	1" #	9"	R2	"		
28	1" #	7'-3"	R3	Subpast		
8	1" #	3'-6"	R4	Past		
352	1" #	18"	R5	Baluster		
24	1" #	8'-6"	R359	Rail		
12	1" #	20'-0"	C1	Curb		
32	1" #	12"	C2	"		
4	1" #	2'-3"	R7	Rail		
172	1" #	5'-9"	B1	Girder		
16	1" #	19'-0"	B2	"		
16	1" #	39'-6"	B3	"		
8	1" #	40'-9"	B4	"		
8	1" #	40'-9"	B5	"		
28	1" #	28'-3"	S1	Slab		
28	1" #	26'-9"	S2	"		
28	1" #	29'-0"	S3	"		
6	1" #	20'-6"	S4	"		
6	1" #	7'-0"	S5	"		
12	1" #	5'-0"	S6	"		
16	1" #	19'-0"	S7	"		
6	1" #	24'-9"	W1	Web		
6	1" #	24'-9"	W1	Web		
6	1" #	24'-9"	W1	Web		
6	1" #	24'-9"	W1	Web		

Note :- Dimensions are given along E of bars and are for computed lengths.

NO CONSTRUCTION CHANGES T-672

FINAL PLANS

Assembled Oct. 1935 by A.F.K. & W.A.P.
Checked Dec. 1935 by H.A.
Drawn April 1929 by R.J.G.
Checked May 1929 by C.B.

Note: This drawing is not to scale. Follow dimensions.

Sheet of 5.

FINISHED

MISSOURI HIGHWAYS AND TRANSPORTATION COMMISSION
U.I.P. AND REHAB. (25'-35'-25') DECK GIRDER SPANS

SEC/SUR 14 TWP 33N RGE 13W



THIS SHEET HAS BEEN
SIGNED, SEALED AND DATED
ELECTRONICALLY.

DATE PREPARED
10/27/2010

ROUTE 32 STATE MO

DISTRICT BR SHEET NO. 5

COUNTY LACLEDE

JOB NO. J8P2307

CONTRACT ID.

PROJECT NO.

BRIDGE NO. T06721

DESCRIPTION	DATE

MISSOURI HIGHWAYS AND TRANSPORTATION
COMMISSION

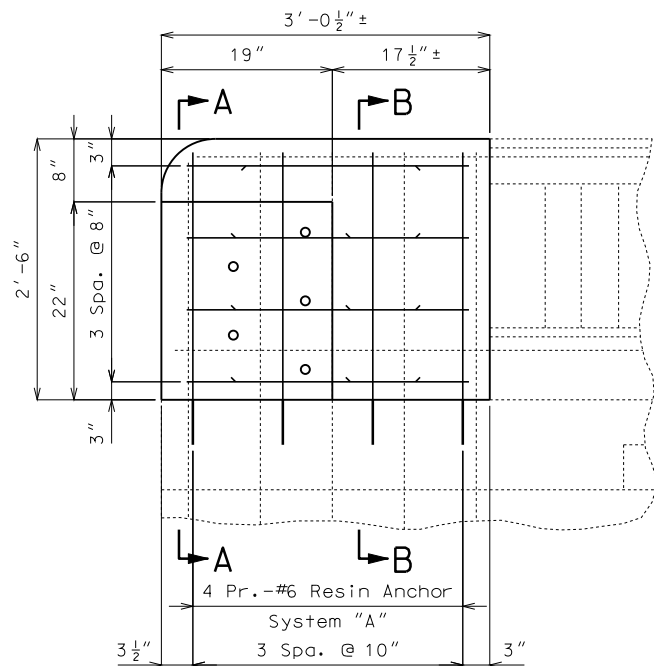
MoDOT

105 WEST CAPITAL
JEFFERSON CITY, MO 65102
1-888-ASK-MODOT (1-888-275-6636)

REPAIRS TO BRIDGE OVER MILL CREEK

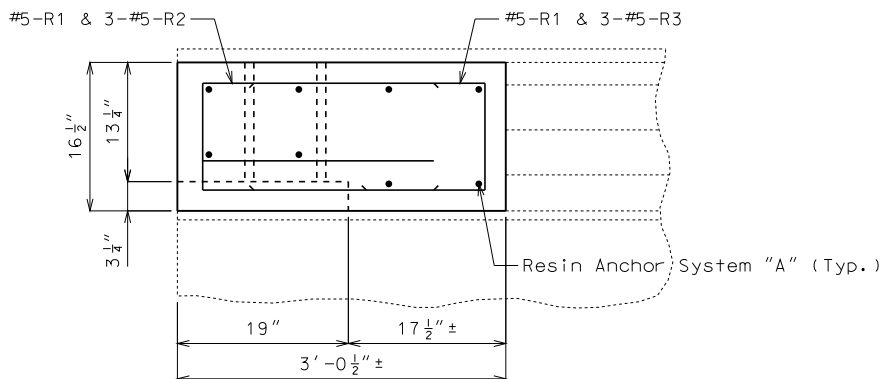
STATE ROAD FROM LEBANON SOUTHEAST
24.0 MILES S.E. OF LEBANON
STA. 1235+29.00 (Match Existing)

STD. 606.22

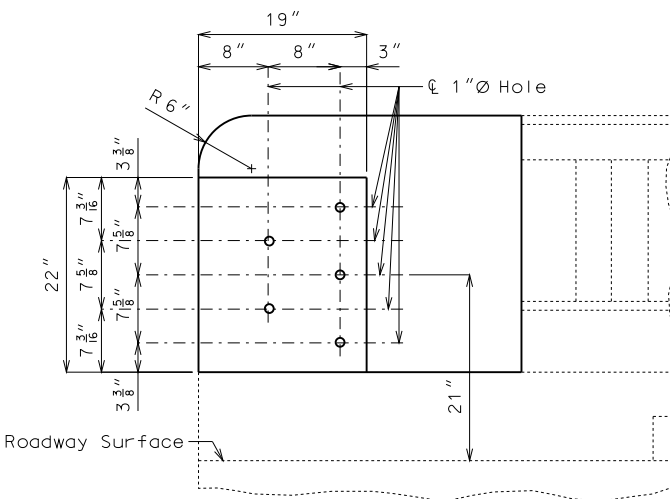


PART ELEVATION OF END POST

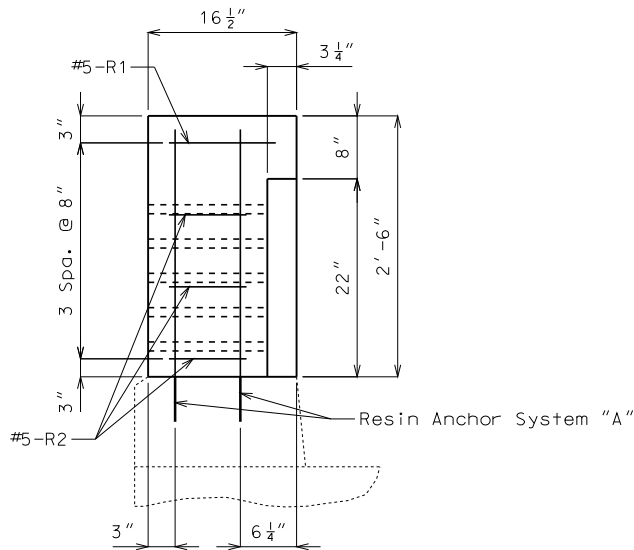
(Left side Abutment No. 1, Right side Abutment No. 4;
others similar by mirroring)



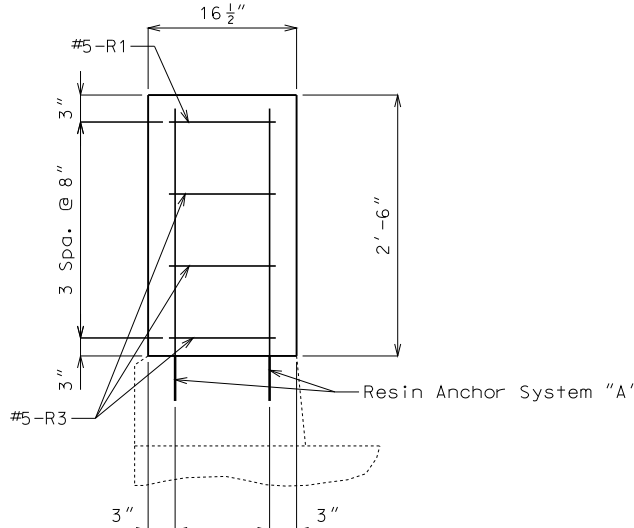
PART PLAN OF END POST



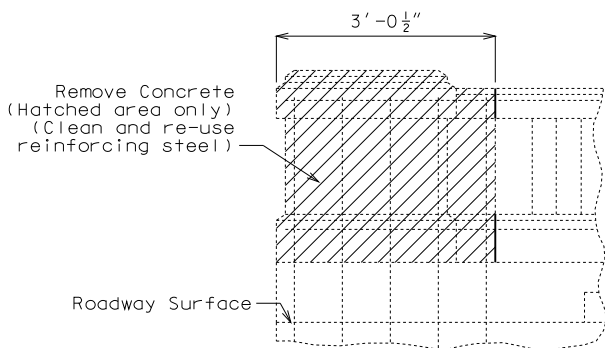
PART ELEVATION SHOWING
BRIDGE ANCHOR SECTION ATTACHMENT



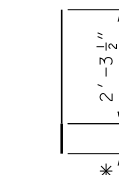
SECTION A-A



SECTION B-B

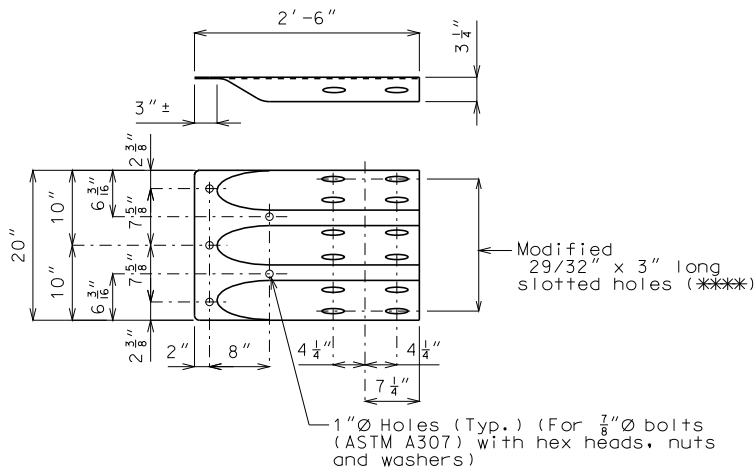


PART ELEVATION OF EXISTING CURB
SHOWING CONCRETE REMOVAL



DETAILS OF RESIN ANCHOR SYSTEM

* Manufacturer's recommended
embedment length (5" min.)



MODIFIED TERMINAL CONNECTION
AT ABUTMENTS (ROADWAY ITEM)

GENERAL NOTES:

Design Specifications:
2002 - AASHTO 17th Edition

Resin Anchors:

The contractor shall use one of the qualified resin anchor systems in accordance with Sec 1039.

Cost of furnishing and installing the resin anchor system complete-in-place will be considered completely covered by the contract unit price for End Post Modification.

The minimum embedment depth in concrete with f'c = 4,000 psi for the resin anchor system shall be that required to meet the minimum ultimate pullout strength in accordance with Sec 1039 but shall not be less than 5".

An Epoxy Coated #6 Grade 60 reinforcing bar shall be substituted for the 3/4" Ø threaded rod.

Miscellaneous:

"Sec" refers to the sections in the standard and supplemental specifications unless specified otherwise.

Outline of old work is indicated by light dashed lines. Heavy lines indicate new work.

Contractor shall verify all dimensions in field before ordering new material.

Estimated Quantities

Item	Total
End Post Modification each	4

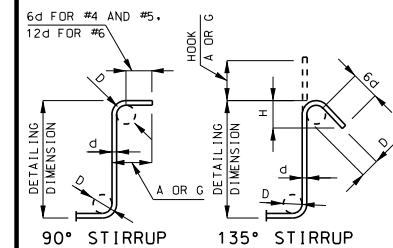
Detailed Oct. 2010
Checked Oct. 2010

Note: This drawing is not to scale. Follow dimensions.

Sheet No. 1 of 2

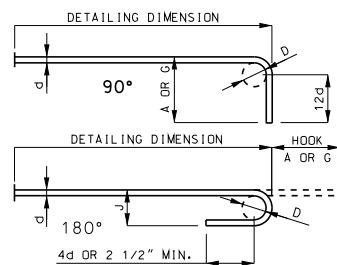
IF A SEAL IS PRESENT ON THIS SHEET IT HAS BEEN ELECTRONICALLY SEALED AND DATED.

BILL OF REINFORCING STEEL

[illegible]

STIRRUP HOOK DIMENSIONS				
GRADES 40 - 50 - 60 KSI				
BAR SIZE	D (IN.)	90° HOOK		135° HOOK
		HOOK A OR G	HOOK A OR G	APPROX. H
#4	2"	4 1/2"	4 1/2"	3"
#5	2 1/2"	6"	5 1/2"	3 3/4"
#6	4 1/2"	12"	8"	4 1/2"

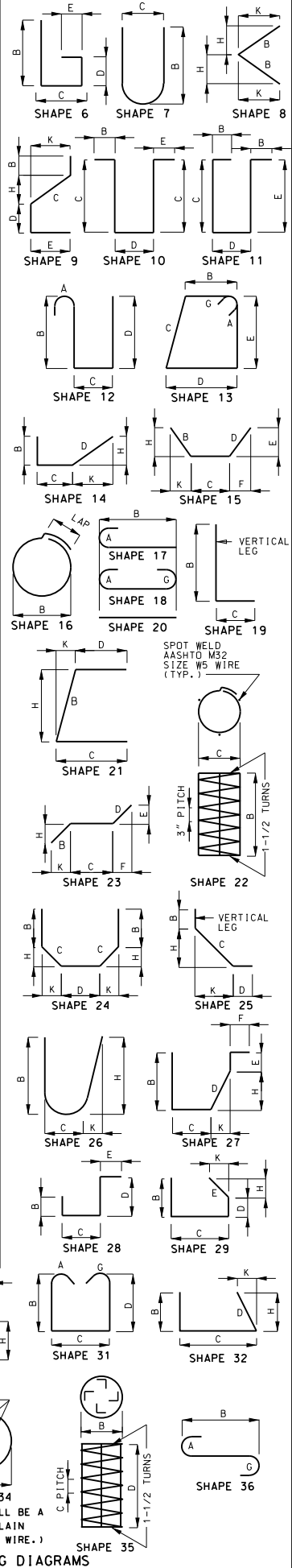
NOTE: UNLESS OTHERWISE NOTED DIAMETER
"D" IS THE SAME FOR ALL BENDS AND HOOKS
ON A BAR.



END HOOK DIMENSIONS					
BAR SIZE	D (IN.)	ALL GRADES			
		180° HOOKS		90° HOOKS	
		A OR G	J	A OR G	J
#3	2 1/4"	5"	3"	6"	
#4	3"	6"	4"	8"	
#5	3 3/4"	7"	5"	10"	
#6	4 1/2"	8"	6"	12"	
#7	5 1/4"	10"	7"	14"	
#8	6"	11"	8"	16"	
#9	9 1/2"	15"	11 3/4"	19"	
#10	10 3/4"	17"	13 1/4"	22"	
#11	12"	19"	14 3/4"	2'-0"	
#14	18 1/4"	2'-3"	21 3/4"	2'-7"	

NOTE:
ALL STANDARD HOOKS AND BENDS OTHER THAN 180 DEGREE ARE TO BE BENT WITH SAME
PROCEDURE AS FOR 90 DEGREE STANDARD HOOKS.
HOOKS AND BENDS SHALL BE IN ACCORDANCE WITH THE PROCEDURES AS SHOWN ON THIS SHEET.
E = EPOXY COATED REINFORCEMENT.
S = STIRRUP.
X = BAR IS INCLUDED IN SUBSTRUCTURE QUANTITIES.
Y = BAR DIMENSIONS VARY IN EQUAL INCREMENTS BETWEEN DIMENSIONS SHOWN ON THIS LINE
AND THE FOLLOWING LINE
NO. EA. = NUMBER OF BARS OF EACH LENGTH.
NOMINAL LENGTHS ARE BASED ON OUT TO OUT DIMENSIONS SHOWN IN BENDING DIAGRAMS AND
ARE LISTED FOR FABRICATORS USE. (NEAREST INCH)
ACTUAL LENGTHS ARE MEASURED ALONG CENTERLINE BAR TO THE NEAREST INCH.
PAYWEIGHTS ARE BASED ON ACTUAL LENGTHS.
FOR HOLE OR CHANNEL SPACERS ARE REQUIRED FOR EACH COLUMN SPIRAL. SPACERS ARE TO
BE PLACED ON INSIDE OF SPIRALS. LENGTH AND WEIGHT OF COLUMN SPIRALS DO NOT INCLUDE
SPLICES OR SPACERS.
REINFORCING STEEL (GRADE 60) FY = 60,000 PSI.

BILL OF REINFORCING STEEL

[illegible]

Detailed Oct. 2010
Checked Oct. 2010

Note: This drawing is not to scale. Follow dimensions.

Sheet No. 2 of 2

[illegible]



Missouri Department of Transportation
Bridge Inventory and Inspection System
Structural Inventory & Appraisal Sheet

November 4, 2019
11:23:41am

COUNTY : LACLEDE BRIDGE : T0672 1 REVIEW STATUS : APPROVED NBI STATUS : P
RECORD TYPE : ROUTE CARRIED 'ON' STRUCT RUN DATE : 2/3/2017 SUBMITTAL YEAR : 2016

GENERAL STRUCTURE INFORMATION			ROUTE DESIGNATION INFORMATION		
1	State	MISSOURI	5A	Record Type	ROUTE CARRIED 'ON' STRUCT
2	District	CD	5B	Route Signing Prefix	MO
3	County	LACLEDE	5C	Designated Level of Service	MAINLINE
8	Federal ID No.	9246	5D	Route Number	00032
27	Year Built	1936	5E	Directional Suffix	NOT APPLICABLE
106	Year Reconstructed	0	7	Facility Carried	MO 32 E
42A	Type of Service On	HIGHWAY	12	Base Hwy. Network	NO
21	Structure Maintenance	STATE HIGHWAY AGENCY	13A	LRS Inventory Route No.	
22	Structure Owner	STATE HIGHWAY AGENCY	13B	Subroute No.	
33	Br. Median Code	NO MEDIAN	20	Toll Status	ON FREE ROAD
37	Historical Significance	NOT ELIGIBLE FOR NR OF HP	26	Functional Classification	06-RURAL MINOR ARTERIAL
101	Parallel Struc Desg	NONE EXISTS	28A	Lanes on Structure	02
103	Temporary Structure	NOT TEMPORARY	100	STRAHNET Designation	RTE NOT A DEFENSE HWY
112	NBIS Bridge Length	YES	104	National Highway System	NOT ON NHS
			105	Federal Lands Highway	NOT APPLICABLE
			110	Designated Nat. Network	NO
STRUCTURE LOCATION INFORMATION			STRUCTURE TRAFFIC INFORMATION		
4	Place	GASCONADE	29	AADT	605
	Code	26596	30	AADT Year	2016
9	Location	S 14 T 33 N R 13 W	102	Direction of Traffic	2-WAY TRAFFIC
11	Milepoint	114.74 miles	109	AADT Truck Percent	14%
16	Latitude	37 D 33 M 45 S	114	Future AADT	998
17	Longitude	92 D 19 M 26 S	115	Future AADT Year	2037
UNDERRECORD INFORMATION			STRUCTURE GEOMETRIC INFORMATION		
6	Features Intersected	MILL CR	10	Inventory Rte. Vert. Clear	99 Ft. 99 In.
42B	Type of Service Under	WATERWAY	19	By pass Detour Length	37.20 miles
28B	Lanes Under Structure	00	32	Approach Roadway Width	21 Ft. 11 In.
54A	Vert. Clearance Ref.	N/A	34	Skew	0.00 Degrees
54B	Vert. Clearance	0 Ft. 0 In.	35	Struct. Flared	NO
55A	Rt. Lat Clear Ref.	N/A	47	Total Horiz. Clear	23 Ft. 11 In.
55B	Rt. Lat Clearance	0 Ft. 0 In.	48	Maximum Span Length	37 Ft. 4 In.
56	Left Lat Clearance	0 Ft. 0 In.	49	Structure Length	92 Ft. 0 In.
38	Navigation Control	PERMIT NOT REQ	50A	Left Curb/Sidewalk Width	0 Ft. 0 In.
39	Nav Vertical Clear	0 Ft. 0 In.	50B	Right Curb/Sidewalk Width	0 Ft. 0 In.
40	Nav Horizontal Clear	0 Ft. 0 In.	51	Curb to Curb Br. Width	23 Ft. 11 In.
111	Nav. Pier Protection		52	Deck Width (Out-Out)	26 Ft. 10 In.
116	Nav. Cl. Vert. Clear		53	Vert. Clearance Over Deck	99 Ft. 99 In.

Design_No = T0672



Missouri Department of Transportation
Bridge Inventory and Inspection System
Structural Inventory & Appraisal Sheet

November 4, 2019
11:23:41am

COUNTY : LACLEDE BRIDGE : T0672 1 REVIEW STATUS : APPROVED NBI STATUS : P
RECORD TYPE : ROUTE CARRIED 'ON' STRUCT RUN DATE : 2/3/2017 SUBMITTAL YEAR : 2016

LOAD RATING AND POSTING INFORMATION			MATERIAL/CONSTRUCTION INFORMATION		
31	Design Load	H 10	43A	Main Struc. Mat type	CONCRETE
41	Structure Status	A - OPEN NO RESTRICTIONS	43B	Main struc Constr. Type	TEE BEAM
63	Oper. Rating Meth.	ALLOWABLE STRESS	45	# of Main Spans	3
64	Operating Rating	39 Tons.	44A	Appr Struc. Mat type	
65	Inventory Rating Meth	ALLOWABLE STRESS	44B	Appr Struc. Cnstr. type	
66	Inventory Rating	20 Tons.	46	# of Approach Span	0
70	Bridge Posting Code	=>LEGAL LOADS	107	Deck Mat/Constr.	1 CONCRETE CIP
			108A	Wear Surf Mat/Constr.	6 BITUMINOUS
			108B	Membrane Mat/Constr.	0 NONE
			108C	Deck Protect Mat/Constr.	0 NONE
PROPOSED IMPROVEMENT INFORMATION			CONDITION RATING INFORMATION		
Sufficiency Rating 52.8 Percent			58	Deck Cond. Rating	5
Deficiency Rating NOT DEFICIENT			59	Superstructure Cond. Rating	5
Funding Eligibility			60	Substructure Cond. Rating	5
75A	Proposed Work		61	Channel /Channel Protection Cond. Rating	6
75B	Work Done By		62	Culvert Cond. Rating	N
76	New Struc Length	0 Ft. 0 In.			
94	Struc Improve Cost	\$ 0,000	INSPECTION INFORMATION		
95	Roadway Improve Cost	\$ 0,000	90	Gen. Insp Date	8 / 15
96	Total Project Cost	\$ 0,000	91	Gen. Insp. Frequency	24 Months
97	Year of Cost Estimates	0	92A	Frac. Critical Inspection	N Months
			93A	Frac. Critical Insp. Date	
			92B	Underwater Inspection	N Months
			93B	Underwater Insp. Date	
			92C	Special Inspection	N Months
			93C	Special Inspection Date	
APPRAISAL RATING INFORMATION			BORDER BRIDGE INFORMATION		
36A	Br. Rail App. Rating	DOES NOT MEET ACCEPT STND	98	Neighboring State Code	
36B	Transition Rail App. Rating	DOES NOT MEET ACCEPT STND	98B	Neighboring State % Respon	
36C	Approach Rail App. Rating	DOES NOT MEET ACCEPT STND	99	Neighboring State Struc. No.	
36D	Rail End Treat. App. Rating	DOES NOT MEET ACCEPT STND			
67	Struc Eval App. Rating	5	APPROVED POSTING INFORMATION		
68	Deck Geometry App. Rating	4	FIELD POSTING INFORMATION		
69	Underclearance App. Rating	N	Approved Posting Category S-1		
71	Waterway Adeq. App. Rating	6	Field Posting Category S-1		
72	Approach Road App. Rating	6	Ton1 Ton2 Ton3		
113	Scour Assess App. Rating	8	Ton1 Ton2 Ton3		
			Tonnage Values for Posting Sign		
			General Text for Posting Sign		
			NO POSTING REQUIRED		

Design_No = T0672



Missouri Department of Transportation
Bridge Inventory and Inspection System
Structural Inventory & Appraisal Sheet

November 4, 2019
11:23:41am

COUNTY : LACLEDE BRIDGE : T0672 1 REVIEW STATUS : APPROVED NBI STATUS : P
RECORD TYPE : ROUTE CARRIED 'ON' STRUCT RUN DATE : 1/11/2018 SUBMITTAL YEAR : 2017

GENERAL STRUCTURE INFORMATION			ROUTE DESIGNATION INFORMATION		
1	State	MISSOURI	5A	Record Type	ROUTE CARRIED 'ON' STRUCT
2	District	CD	5B	Route Signing Prefix	MO
3	County	LACLEDE	5C	Designated Level of Service	MAINLINE
8	Federal ID No.	9246	5D	Route Number	00032
27	Year Built	1936	5E	Directional Suffix	NOT APPLICABLE
106	Year Reconstructed	0	7	Facility Carried	MO 32 E
42A	Type of Service On	HIGHWAY	12	Base Hwy. Network	NO
21	Structure Maintenance	STATE HIGHWAY AGENCY	13A	LRS Inventory Route No.	
22	Structure Owner	STATE HIGHWAY AGENCY	13B	Subroute No.	
33	Br. Median Code	NO MEDIAN	20	Toll Status	ON FREE ROAD
37	Historical Significance	NOT ELIGIBLE FOR NR OF HP	26	Functional Classification	06-RURAL MINOR ARTERIAL
101	Parallel Struc Desg	NONE EXISTS	28A	Lanes on Structure	02
103	Temporary Structure	NOT TEMPORARY	100	STRAHNET Designation	RTE NOT A DEFENSE HWY
112	NBIS Bridge Length	YES	104	National Highway System	NOT ON NHS
			105	Federal Lands Highway	NOT APPLICABLE
			110	Designated Nat. Network	NO
STRUCTURE LOCATION INFORMATION			STRUCTURE TRAFFIC INFORMATION		
4	Place	GASCONADE	29	AADT	605
	Code	26596	30	AADT Year	2016
9	Location	S 14 T 33 N R 13 W	102	Direction of Traffic	2-WAY TRAFFIC
11	Milepoint	114.74 miles	109	AADT Truck Percent	14%
16	Latitude	37 D 33 M 45 S	114	Future AADT	998
17	Longitude	92 D 19 M 26 S	115	Future AADT Year	2036
UNDERRECORD INFORMATION			STRUCTURE GEOMETRIC INFORMATION		
6	Features Intersected	MILL CR	10	Inventory Rte. Vert. Clear	99 Ft. 99 In.
42B	Type of Service Under	WATERWAY	19	By pass Detour Length	37.20 miles
28B	Lanes Under Structure	00	32	Approach Roadway Width	21 Ft. 11 In.
54A	Vert. Clearance Ref.	N/A	34	Skew	0.00 Degrees
54B	Vert. Clearance	0 Ft. 0 In.	35	Struct. Flared	NO
55A	Rt. Lat Clear Ref.	N/A	47	Total Horiz. Clear	23 Ft. 11 In.
55B	Rt. Lat Clearance	0 Ft. 0 In.	48	Maximum Span Length	37 Ft. 4 In.
56	Left Lat Clearance	0 Ft. 0 In.	49	Structure Length	92 Ft. 0 In.
38	Navigation Control	PERMIT NOT REQ	50A	Left Curb/Sidewalk Width	0 Ft. 0 In.
39	Nav Vertical Clear	0 Ft. 0 In.	50B	Right Curb/Sidewalk Width	0 Ft. 0 In.
40	Nav Horizontal Clear	0 Ft. 0 In.	51	Curb to Curb Br. Width	23 Ft. 11 In.
111	Nav. Pier Protection		52	Deck Width (Out-Out)	26 Ft. 10 In.
116	Nav. Cl. Vert. Clear		53	Vert. Clearance Over Deck	99 Ft. 99 In.

Design_No = T0672



Missouri Department of Transportation
Bridge Inventory and Inspection System
Structural Inventory & Appraisal Sheet

November 4, 2019
11:23:41am

COUNTY : LACLEDE BRIDGE : T0672 1 REVIEW STATUS : APPROVED NBI STATUS : P
RECORD TYPE : ROUTE CARRIED 'ON' STRUCT RUN DATE : 1/11/2018 SUBMITTAL YEAR : 2017

LOAD RATING AND POSTING INFORMATION			MATERIAL/CONSTRUCTION INFORMATION		
31	Design Load	H 10	43A	Main Struc. Mat type	CONCRETE
41	Structure Status	A - OPEN NO RESTRICTIONS	43B	Main struc Constr. Type	TEE BEAM
63	Oper. Rating Meth.	ALLOWABLE STRESS	45	# of Main Spans	3
64	Operating Rating	39 Tons.	44A	Appr Struc. Mat type	
65	Inventory Rating Meth	ALLOWABLE STRESS	44B	Appr Struc. Cnstr. type	
66	Inventory Rating	20 Tons.	46	# of Approach Span	0
70	Bridge Posting Code	=>LEGAL LOADS	107	Deck Mat/Constr.	1 CONCRETE CIP
PROPOSED IMPROVEMENT INFORMATION			108A	Wear Surf Mat/Constr.	6 BITUMINOUS
Sufficiency Rating 35.7 Percent			108B	Membrane Mat/Constr.	0 NONE
Deficiency Rating STRUCTURAL			108C	Deck Protect Mat/Constr.	0 NONE
Funding Eligibility FULL			CONDITION RATING INFORMATION		
75A	Proposed Work	REPLACEMENT SUBSTND LOAD	58	Deck Cond. Rating	4
75B	Work Done By	Contract	59	Superstructure Cond. Rating	4
76	New Struc Length	124 Ft. 7 In.	60	Substructure Cond. Rating	5
94	Struc Improve Cost	\$ 434,000	61	Channel /Channel Protection Cond. Rating	6
95	Roadway Improve Cost	\$ 43,000	62	Culvert Cond. Rating	N
96	Total Project Cost	\$ 652,000	INSPECTION INFORMATION		
97	Year of Cost Estimates	2018	90	Gen. Insp Date	8 / 17
APPRAISAL RATING INFORMATION			91	Gen. Insp. Frequency	24 Months
36A	Br. Rail App. Rating	DOES NOT MEET ACCEPT STND	92A	Frac. Critical Inspection	N Months
36B	Transition Rail App. Rating	MEETS ACCEPTBLE STND	93A	Frac. Critical Insp. Date	
36C	Approach Rail App. Rating	MEETS ACCEPTBLE STND	92B	Underwater Inspection	N Months
36D	Rail End Treat. App. Rating	MEETS ACCEPTBLE STND	93B	Underwater Insp. Date	
67	Struc Eval App. Rating	4	92C	Special Inspection	N Months
68	Deck Geometry App. Rating	4	93C	Special Inspection Date	
69	Underclearance App. Rating	N	BORDER BRIDGE INFORMATION		
71	Waterway Adeq. App. Rating	6	98	Neighboring State Code	
72	Approach Road App. Rating	6	98B	Neighboring State % Respon	
113	Scour Assess App. Rating	8	99	Neighboring State Struc. No.	
APPROVED POSTING INFORMATION			FIELD POSTING INFORMATION		
Approved Posting Category S-1			Field Posting Category S-1		
Ton1 Ton2 Ton3			Ton1 Ton2 Ton3		
Tonnage Values for Posting Sign			Tonnage Values for Posting Sign		
General Text for Posting Sign			General Text for Posting Sign		
NO POSTING REQUIRED			NO POSTING REQUIRED		

Design_No = T0672



Missouri Department of Transportation
Bridge Inventory and Inspection System
Structural Inventory & Appraisal Sheet

November 4, 2019
11:23:41am

COUNTY : LACLEDE BRIDGE : T0672 1 REVIEW STATUS : APPROVED NBI STATUS : P
RECORD TYPE : ROUTE CARRIED 'ON' STRUCT RUN DATE : 1/11/2019 SUBMITTAL YEAR : 2018

GENERAL STRUCTURE INFORMATION			ROUTE DESIGNATION INFORMATION		
1	State	MISSOURI	5A	Record Type	ROUTE CARRIED 'ON' STRUCT
2	District	CD	5B	Route Signing Prefix	MO
3	County	LACLEDE	5C	Designated Level of Service	MAINLINE
8	Federal ID No.	9246	5D	Route Number	00032
27	Year Built	1936	5E	Directional Suffix	NOT APPLICABLE
106	Year Reconstructed	0	7	Facility Carried	MO 32 E
42A	Type of Service On	HIGHWAY	12	Base Hwy. Network	NO
21	Structure Maintenance	STATE HIGHWAY AGENCY	13A	LRS Inventory Route No.	
22	Structure Owner	STATE HIGHWAY AGENCY	13B	Subroute No.	
33	Br. Median Code	NO MEDIAN	20	Toll Status	ON FREE ROAD
37	Historical Significance	NOT ELIGIBLE FOR NR OF HP	26	Functional Classification	06-RURAL MINOR ARTERIAL
101	Parallel Struc Desg	NONE EXISTS	28A	Lanes on Structure	02
103	Temporary Structure	NOT TEMPORARY	100	STRAHNET Designation	RTE NOT A DEFENSE HWY
112	NBIS Bridge Length	YES	104	National Highway System	NOT ON NHS
			105	Federal Lands Highway	NOT APPLICABLE
			110	Designated Nat. Network	NO
STRUCTURE LOCATION INFORMATION			STRUCTURE TRAFFIC INFORMATION		
4	Place	GASCONADE	29	AADT	1102
	Code	26596	30	AADT Year	2018
9	Location	S 14 T 33 N R 13 W	102	Direction of Traffic	2-WAY TRAFFIC
11	Milepoint	114.74 miles	109	AADT Truck Percent	14%
16	Latitude	37 D 33 M 45 S	114	Future AADT	1818
17	Longitude	92 D 19 M 26 S	115	Future AADT Year	2038
UNDERRECORD INFORMATION			STRUCTURE GEOMETRIC INFORMATION		
6	Features Intersected	MILL CR	10	Inventory Rte. Vert. Clear	99 Ft. 99 In.
42B	Type of Service Under	WATERWAY	19	By pass Detour Length	37.20 miles
28B	Lanes Under Structure	00	32	Approach Roadway Width	21 Ft. 11 In.
54A	Vert. Clearance Ref.	N/A	34	Skew	0.00 Degrees
54B	Vert. Clearance	0 Ft. 0 In.	35	Struct. Flared	NO
55A	Rt. Lat Clear Ref.	N/A	47	Total Horiz. Clear	23 Ft. 11 In.
55B	Rt. Lat Clearance	0 Ft. 0 In.	48	Maximum Span Length	37 Ft. 4 In.
56	Left Lat Clearance	0 Ft. 0 In.	49	Structure Length	92 Ft. 0 In.
38	Navigation Control	PERMIT NOT REQ	50A	Left Curb/Sidewalk Width	0 Ft. 0 In.
39	Nav Vertical Clear	0 Ft. 0 In.	50B	Right Curb/Sidewalk Width	0 Ft. 0 In.
40	Nav Horizontal Clear	0 Ft. 0 In.	51	Curb to Curb Br. Width	23 Ft. 11 In.
111	Nav. Pier Protection		52	Deck Width (Out-Out)	26 Ft. 10 In.
116	Nav. Cl. Vert. Clear		53	Vert. Clearance Over Deck	99 Ft. 99 In.

Design_No = T0672



Missouri Department of Transportation
Bridge Inventory and Inspection System
Structural Inventory & Appraisal Sheet

November 4, 2019
11:23:41am

COUNTY : LACLEDE BRIDGE : T0672 1 REVIEW STATUS : APPROVED NBI STATUS : P
RECORD TYPE : ROUTE CARRIED 'ON' STRUCT RUN DATE : 1/11/2019 SUBMITTAL YEAR : 2018

LOAD RATING AND POSTING INFORMATION			MATERIAL/CONSTRUCTION INFORMATION			
31	Design Load	H 10	43A	Main Struc. Mat type	CONCRETE	
41	Structure Status	A - OPEN NO RESTRICTIONS	43B	Main struc Constr. Type	TEE BEAM	
63	Oper. Rating Meth.	ALLOWABLE STRESS	45	# of Main Spans	3	
64	Operating Rating	39 Tons.	44A	Appr Struc. Mat type		
65	Inventory Rating Meth	ALLOWABLE STRESS	44B	Appr Struc. Cnstr. type		
66	Inventory Rating	20 Tons.	46	# of Approach Span	0	
70	Bridge Posting Code	=>LEGAL LOADS	107	Deck Mat/Constr.	1 CONCRETE CIP	
			108A	Wear Surf Mat/Constr.	6 BITUMINOUS	
			108B	Membrane Mat/Constr.	0 NONE	
			108C	Deck Protect Mat/Constr.	0 NONE	
PROPOSED IMPROVEMENT INFORMATION			CONDITION RATING INFORMATION			
	Sufficiency Rating	22.2 Percent	58	Deck Cond. Rating	4	
	Deficiency Rating	STRUCTURAL	59	Superstructure Cond. Rating	4	
	Funding Eligibility	FULL	60	Substructure Cond. Rating	5	
75A	Proposed Work	REPLACEMENT SUBSTND LOAD	61	Channel /Channel Protection Cond. Rating	6	
75B	Work Done By	Contract	62	Culvert Cond. Rating	N	
76	New Struc Length	124 Ft. 7 In.				
94	Struc Improve Cost	\$ 434,000	INSPECTION INFORMATION			
95	Roadway Improve Cost	\$ 43,000	90	Gen. Insp Date	8 / 17	
96	Total Project Cost	\$ 652,000	91	Gen. Insp. Frequency	24 Months	
97	Year of Cost Estimates	2019	92A	Frac. Critical Inspection	N Months	
			93A	Frac. Critical Insp. Date		
			92B	Underwater Inspection	N Months	
			93B	Underwater Insp. Date		
			92C	Special Inspection	N Months	
			93C	Special Inspection Date		
APPRAISAL RATING INFORMATION			BORDER BRIDGE INFORMATION			
36A	Br. Rail App. Rating	DOES NOT MEET ACCEPT STND	98	Neighboring State Code		
36B	Transition Rail App. Rating	MEETS ACCEPTBLE STND	98B	Neighboring State % Respon		
36C	Approach Rail App. Rating	MEETS ACCEPTBLE STND	99	Neighboring State Struc. No.		
36D	Rail End Treat. App. Rating	MEETS ACCEPTBLE STND				
67	Struc Eval App. Rating	4	APPROVED POSTING INFORMATION			
68	Deck Geometry App. Rating	4	FIELD POSTING INFORMATION			
69	Underclearance App. Rating	N	Approved Posting Category	S-1	Field Posting Category	S-1
71	Waterway Adeq. App. Rating	6		Ton1 Ton2 Ton3		Ton1 Ton2 Ton3
72	Approach Road App. Rating	6	Tonnage Values for Posting Sign		Tonnage Values for Posting Sign	
113	Scour Assess App. Rating	8	General Text for Posting Sign		General Text for Posting Sign	
			NO POSTING REQUIRED		NO POSTING REQUIRED	

Design_No = T0672



Missouri Department of Transportation
Bridge Inventory and Inspection System
Structural Inventory & Appraisal Sheet

November 4, 2019
11:23:41am

COUNTY : LACLEDE BRIDGE : T0672 1 REVIEW STATUS : REVIEW NBI STATUS : T
RECORD TYPE : ROUTE CARRIED 'ON' STRUCT RUN DATE : 10/7/2019 SUBMITTAL YEAR : 2019

GENERAL STRUCTURE INFORMATION			ROUTE DESIGNATION INFORMATION		
1	State	MISSOURI	5A	Record Type	ROUTE CARRIED 'ON' STRUCT
2	District	CD	5B	Route Signing Prefix	MO
3	County	LACLEDE	5C	Designated Level of Service	MAINLINE
8	Federal ID No.	9246	5D	Route Number	00032
27	Year Built	1936	5E	Directional Suffix	NOT APPLICABLE
106	Year Reconstructed	0	7	Facility Carried	MO 32 E
42A	Type of Service On	HIGHWAY	12	Base Hwy. Network	NO
21	Structure Maintenance	STATE HIGHWAY AGENCY	13A	LRS Inventory Route No.	
22	Structure Owner	STATE HIGHWAY AGENCY	13B	Subroute No.	
33	Br. Median Code	NO MEDIAN	20	Toll Status	ON FREE ROAD
37	Historical Significance	NOT ELIGIBLE FOR NR OF HP	26	Functional Classification	06-RURAL MINOR ARTERIAL
101	Parallel Struc Desg	NONE EXISTS	28A	Lanes on Structure	02
103	Temporary Structure	NOT TEMPORARY	100	STRAHNET Designation	RTE NOT A DEFENSE HWY
112	NBIS Bridge Length	YES	104	National Highway System	NOT ON NHS
			105	Federal Lands Highway	NOT APPLICABLE
			110	Designated Nat. Network	NO
STRUCTURE LOCATION INFORMATION			STRUCTURE TRAFFIC INFORMATION		
4	Place	GASCONADE	29	AADT	617
	Code	26596	30	AADT Year	2018
9	Location	S 14 T 33 N R 13 W	102	Direction of Traffic	2-WAY TRAFFIC
11	Milepoint	115.66 miles	109	AADT Truck Percent	14%
16	Latitude	37 D 33 M 45 S	114	Future AADT	1018
17	Longitude	92 D 19 M 26 S	115	Future AADT Year	2038
UNDERRECORD INFORMATION			STRUCTURE GEOMETRIC INFORMATION		
6	Features Intersected	MILL CR	10	Inventory Rte. Vert. Clear	99 Ft. 99 In.
42B	Type of Service Under	WATERWAY	19	By pass Detour Length	37.50 miles
28B	Lanes Under Structure	00	32	Approach Roadway Width	21 Ft. 12 In.
54A	Vert. Clearance Ref.	N/A	34	Skew	0.00 Degrees
54B	Vert. Clearance	0 Ft. 0 In.	35	Struct. Flared	NO
55A	Rt. Lat Clear Ref.	N/A	47	Total Horiz. Clear	23 Ft. 11 In.
55B	Rt. Lat Clearance	0 Ft. 0 In.	48	Maximum Span Length	37 Ft. 5 In.
56	Left Lat Clearance	0 Ft. 0 In.	49	Structure Length	92 Ft. 10 In.
38	Navigation Control	PERMIT NOT REQ	50A	Left Curb/Sidewalk Width	0 Ft. 0 In.
39	Nav Vertical Clear	0 Ft. 0 In.	50B	Right Curb/Sidewalk Width	0 Ft. 0 In.
40	Nav Horizontal Clear	0 Ft. 0 In.	51	Curb to Curb Br. Width	23 Ft. 11 In.
111	Nav. Pier Protection		52	Deck Width (Out-Out)	26 Ft. 11 In.
116	Nav. Cl. Vert. Clear		53	Vert. Clearance Over Deck	99 Ft. 99 In.

Design_No = T0672



Missouri Department of Transportation
Bridge Inventory and Inspection System
Structural Inventory & Appraisal Sheet

November 4, 2019
11:23:41am

COUNTY : LACLEDE BRIDGE : T0672 1 REVIEW STATUS : REVIEW NBI STATUS : T
RECORD TYPE : ROUTE CARRIED 'ON' STRUCT RUN DATE : 10/7/2019 SUBMITTAL YEAR : 2019

LOAD RATING AND POSTING INFORMATION			MATERIAL/CONSTRUCTION INFORMATION		
31	Design Load	H 10	43A	Main Struc. Mat type	CONCRETE
41	Structure Status	OPEN NO RESTRICTIONS	43B	Main struc Constr. Type	TEE BEAM
63	Oper. Rating Meth.	LOAD FACTOR	45	# of Main Spans	3
64	Operating Rating	34 Tons.	44A	Appr Struc. Mat type	000
65	Inventory Rating Meth	LOAD FACTOR	44B	Appr Struc. Cnstr. type	000
66	Inventory Rating	21 Tons.	46	# of Approach Span	0
70	Bridge Posting Code	=>LEGAL LOADS	107	Deck Mat/Constr.	1 CONCRETE CIP
PROPOSED IMPROVEMENT INFORMATION			108A	Wear Surf Mat/Constr.	6 BITUMINOUS
Sufficiency Rating 37.6 Percent			108B	Membrane Mat/Constr.	0 NONE
Deficiency Rating STRUCTURAL			108C	Deck Protect Mat/Constr.	0 NONE
Funding Eligibility FULL			CONDITION RATING INFORMATION		
75A	Proposed Work	REPLACEMENT SUBSTND LOAD	58	Deck Cond. Rating	4
75B	Work Done By	Contract	59	Superstructure Cond. Rating	4
76	New Struc Length	124 Ft. 8 In.	60	Substructure Cond. Rating	5
94	Struc Improve Cost	\$ 434,000	61	Channel /Channel Protection Cond. Rating	6
95	Roadway Improve Cost	\$ 43,000	62	Culvert Cond. Rating	N
96	Total Project Cost	\$ 652,000	INSPECTION INFORMATION		
97	Year of Cost Estimates	2019	90	Gen. Insp Date	8 / 19
APPRAISAL RATING INFORMATION			91	Gen. Insp. Frequency	24 Months
36A	Br. Rail App. Rating	DOES NOT MEET ACCEPT STND	92A	Frac. Critical Inspection	N Months
36B	Transition Rail App. Rating	MEETS ACCEPTBLE STND	93A	Frac. Critical Insp. Date	
36C	Approach Rail App. Rating	MEETS ACCEPTBLE STND	92B	Underwater Inspection	N Months
36D	Rail End Treat. App. Rating	MEETS ACCEPTBLE STND	93B	Underwater Insp. Date	
67	Struc Eval App. Rating	4	92C	Special Inspection	N Months
68	Deck Geometry App. Rating	4	93C	Special Inspection Date	
69	Underclearance App. Rating	N	BORDER BRIDGE INFORMATION		
71	Waterway Adeq. App. Rating	6	98	Neighboring State Code	
72	Approach Road App. Rating	6	98B	Neighboring State % Respon	
113	Scour Assess App. Rating	8	99	Neighboring State Struc. No.	
APPROVED POSTING INFORMATION			FIELD POSTING INFORMATION		
Approved Posting Category S-1			Field Posting Category S-1		
Ton1 Ton2 Ton3			Ton1 Ton2 Ton3		
Tonnage Values for Posting Sign			Tonnage Values for Posting Sign		
General Text for Posting Sign			General Text for Posting Sign		
NO POSTING REQUIRED			NO POSTING REQUIRED		

Design_No = T0672