

5	MO.	PWA 76
PHELPS		B.

TITLE SHEET

SEE

PHELPS CO. RTE. B

SEC. 3 C

S-634

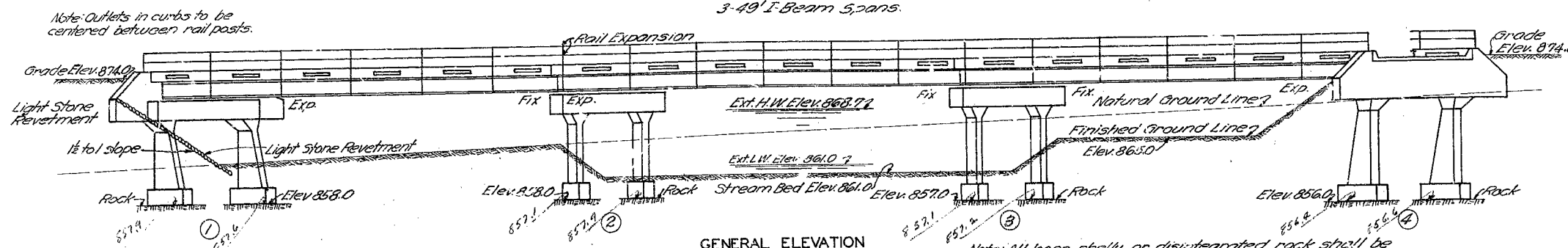
FINAL	SURVEY	DATE
NO.	NO.	NO.

ORIGINAL	SURVEY	DATE
NO.	NO.	NO.

369

# MISSOURI STATE HIGHWAY DEPARTMENT

FED. ROAD DIST. NO.	STATE	FED. AID PROJ. NO.	FISCAL YEAR	SHEET NO.	TOTAL SHEETS
5	MO.	77-26	19		



BILL OF REINFORCING STEEL FOR SUPERSTRUCTURE					
No.	Size	Length	Mark	Location	Bending Sketch and Cutting Diagram
32	3/8"	26'9"	C1	Curb	
216	3/8"	21'0"	C2	"	
16	3/8"	25'9"	C3	"	
466	3/8"	21'0"	S1	Slab	
104	3/8"	26'6"	S2	"	
240	3/8"	22'6"	S3	"	
12	3/8"	25'0"	S4	"	
52	3/8"	25'6"	S5	"	

Note: Dimensions given are along centerline of bars and are for computed lengths.

## GENERAL NOTES:

Loading: One 10 Ton Truck, 80% of weight on rear axle, 30% impact, 14" wheel base, 6'0" gage, 10" tire.

Exposed edges to be beveled 3/4" where no other bevel is noted.

Concrete in slab and curbs to be 1:2:3 1/2 mix, Class "X".

All other concrete to be 1:2:4 mix, Class "B".

Bridge excavation in accordance with Section I of Standard Specifications issued April 1, 1930, except that quantities paid for will be computed from Elev. 861.0 where existing ground line is below this elevation.

I-Beams with fastenings, spacers, handrail, and rail posts with fastenings

structural steel. Cost of metallic edge moulding will be included in price bid for concrete.

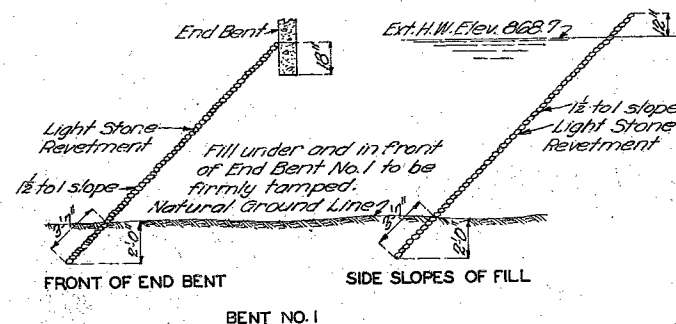
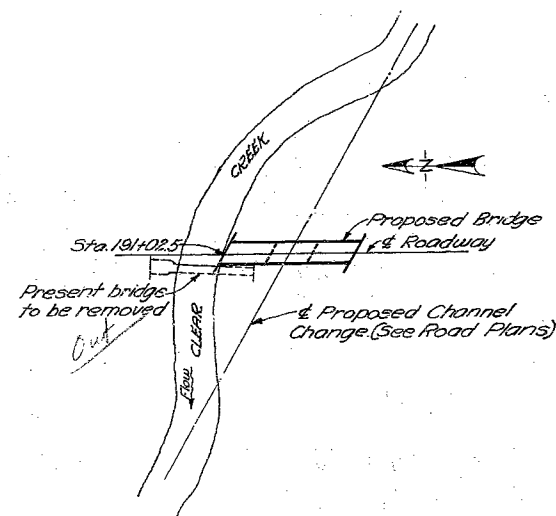
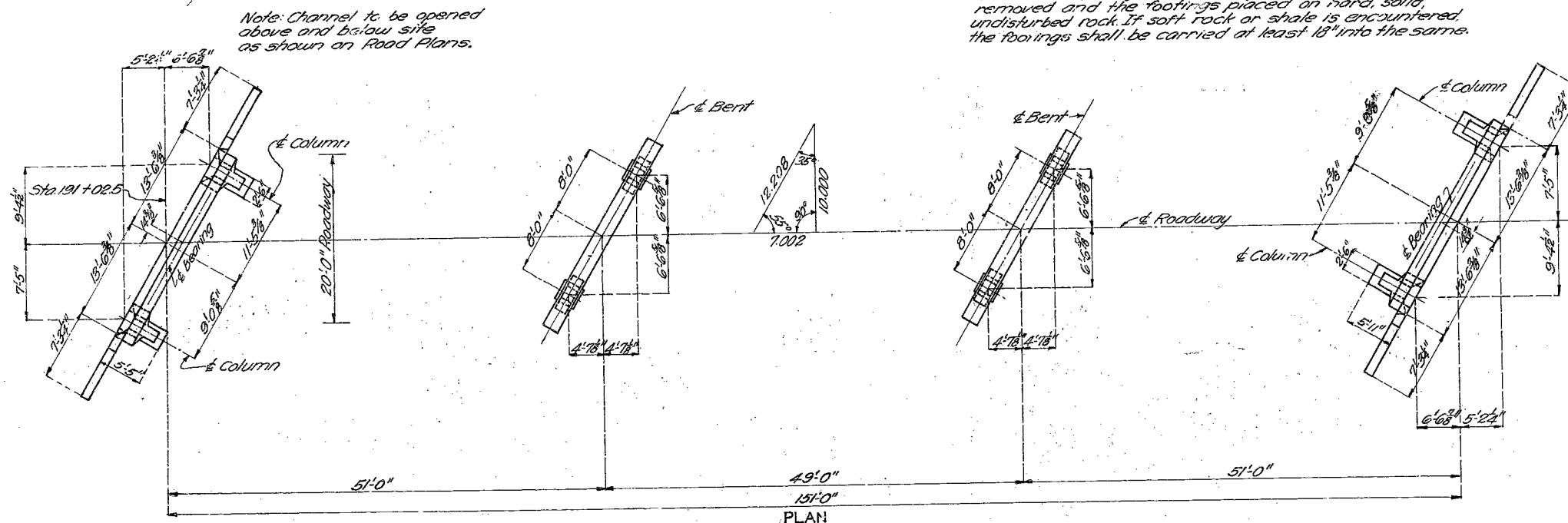
Detail shop drawings shall be submitted to the State Highway Department in duplicate and shall be approved before steel is fabricated.

When rubber compound is specified on plans for use in partition and expansion joints, the pre-moulded joint shall be securely stitched to one face of concrete with copper wire.

Paint: Shop, none. Field, contact surfaces of bolted field connections one coat red lead and surfaces inaccessible after erection three coats of red lead. No other paint to be applied by contractor. Red lead required shall be furnished by the contractor. See Special Provisions.

See Special Provisions in regard to permissible beam substitutions and basis of payment.

Rivets 3/8", holes 1/2", except in handrail where rivets shall be 5/8", holes 1 1/8". Field connections for handrail channels shall be 5/8" button head bolts and for connection of rail to rail posts shall be 5/8" bolts, holes 1 1/8". All other field connections riveted except as noted.



Note: Light stone revetment to be placed on fills at End Bent No. 1 as shown in sketches. Approximately 180 sq. yds. of light stone revetment work included in road contract.

ESTIMATED QUANTITIES				FINAL QUANTITY
ITEM	SUPERSTR.	SUBSTR.	TOTAL	
Excavation Class I Cu. Yds.		45	45	87
Excavation Class II Cu. Yds.		56	56	33.5
Concrete 1:2:4 mix, Class "B" Cu. Yds.		45.6	45.6	45.9
Concrete 1:2:3 1/2 mix, Class "X" Cu. Yds.	76.7		76.7	76.7
Fabricated Structural Steel Lbs.	76500		76500	76500
Reinforcing Steel Lbs.	20540	6980	27520	27520
Excavation Class II below plan gr. cu.				2
Drilling Test Holes FA				9.35
Backfilling due to engr. error FA				17.24
Bridge Removal L. Sum				1

Note: Bridge excavation above Elev. 862.0 will be paid for as Class I Bridge Excavation.

Bridge excavation below Elev. 862.0 will be paid for as Class II Bridge Excavation.

B.M. Elev. 866.82 Nail in 24" Elm 10' Left of Sta. 191+00

## BRIDGE OVER CLEAR CREEK

STATE ROAD FROM ST. JAMES NORTH  
ABOUT 7.0 MILES NORTH OF ST. JAMES  
PROJECT NO. PWA76, 55-S3C STA. 191+02.5

PHELPS COUNTY

SUBMITTED BY: *M.R. Jank* DATE: 1/8/34  
APPROVED BY: *T.H. Cullen* DATE: 1/8/34  
BRIDGE ENGINEER  
CHIEF ENGINEER

S-634

Drawn Aug. 1933 By R.J.G.  
Traced Aug. 1933 By R.J.G.  
Checked Aug. 1933 By M.W.R.  
Assembled Nov. 1933 By L.K.S.  
Checked Dec. 1933 By C.F.K.

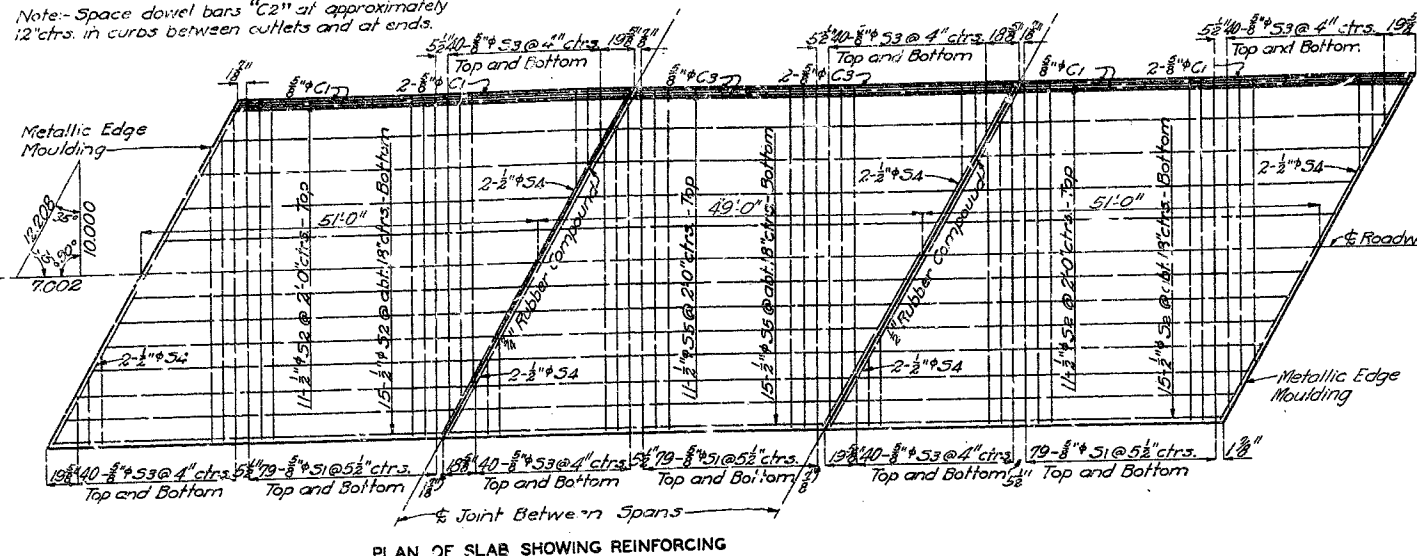
Note: This drawing is not to scale. Follow dimensions.

Sheet No. 1 of 3

# MISSOURI STATE HIGHWAY DEPARTMENT

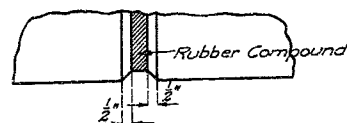
FED. ROAD DIST. NO.	STATE	FED. AID PROJ. NO.	FISCAL YEAR	SHEET NO.	TOTAL SHEETS
5	MO.	PWA 76, SB-53C	19		

Note: Space dowel bars "C2" at approximately 12' ctrs. in curbs between outlets and at ends.

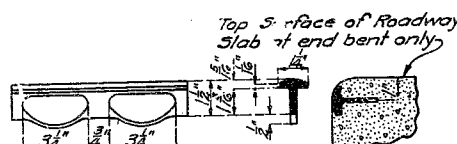


PLAN OF SLAB SHOWING REINFORCING

Note: Modify curbs as shown in "Location of Posts at End Bents" on this sheet.



Note: Use bevel as shown for exposed faces of all joints consisting of rubber compound except at top surface of roadway slab. Use edging tool with 3" radius at top surface of roadway slab each side of rubber compound joint.

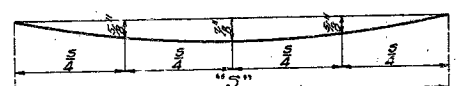


Note: An approved equivalent may be substituted for edge moulding shown above.

METALLIC EDGE Moulding

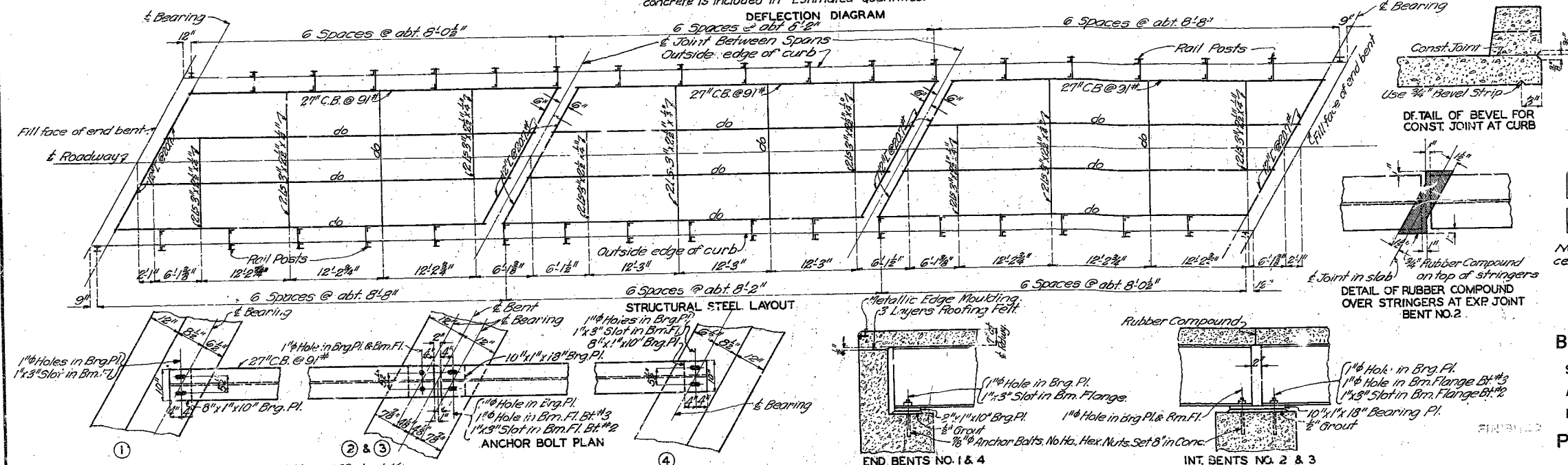
PERMISSIBLE BEAM SUBSTITUTIONS			
STANDARD I-BEAMS		BETHLEHEM BEAMS	
Inside	Outside	Inside	Outside
24" @ 115#	24" @ 105.9#	28" @ 91#	28" @ 91#

Note: Top of curbs under end posts shall be finished to a smooth surface parallel to grade. Not less than one nor more than four soft lead plates of 1/8" thickness shall be used under angles of each end rail post for aligning rail to correct elevation. Plates shall be 8" x 6" and shall be punched 8" on same gauge as the angles. No grouting permitted. Cost of lead plates to be included in price bid for other items.



Note: Floor slab to be brought to grade and dead load deflection taken care of by increasing slab thickness. Depth of slab at outside face of curb to be kept uniform and bottom surface of slab warped between curb and outside beam to obtain required thickness of beam. Payment will be allowed for additional concrete required for thickening slab. This additional concrete is included in "Estimated Quantities."

DEFLECTION DIAGRAM

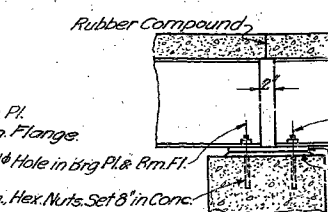
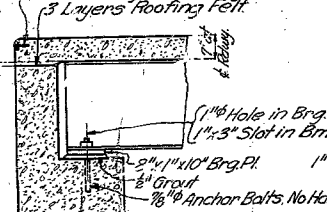
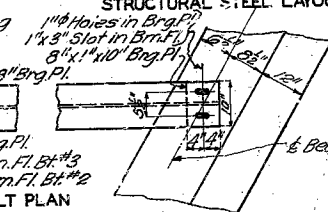
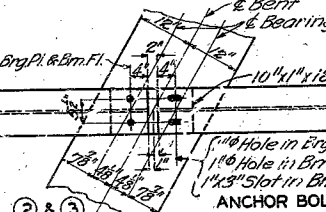
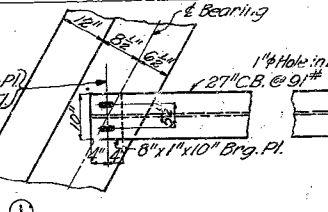


STRUCTURAL STEEL LAYOUT

1

2 & 3

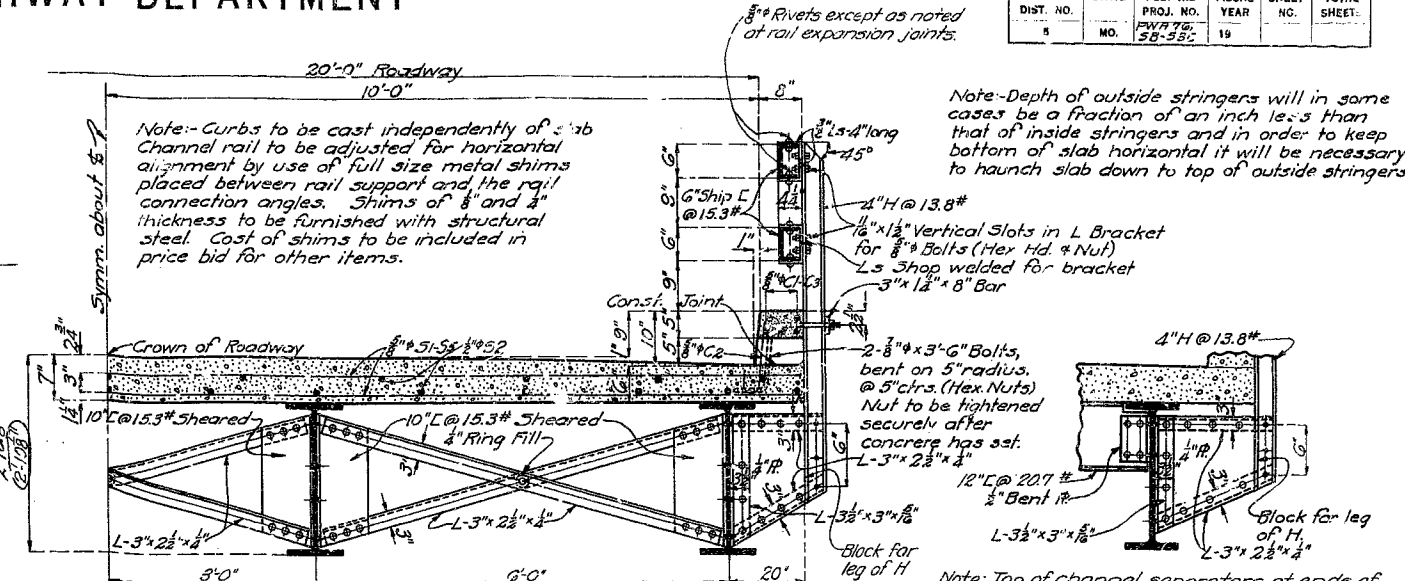
4



END BENTS NO. 1 & 4

INT. BENTS NO. 2 & 3

Note: This drawing is not to scale. Follow dimensions.

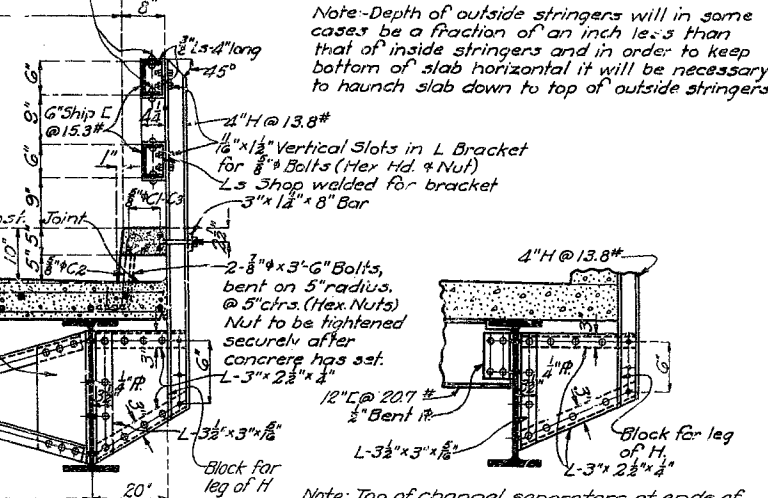


HALF SECTION THRU SPAN

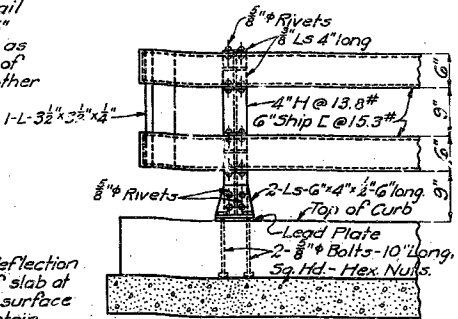
Note: Curbs to be cast independently of slab. Channel rail to be adjusted for horizontal alignment by use of full size metal shims placed between rail support and the rail connection angles. Shims of 1/8" and 1/4" thickness to be furnished with structural steel. Cost of shims to be included in price bid for other items.

8" Rivets except as noted at rail expansion joints.

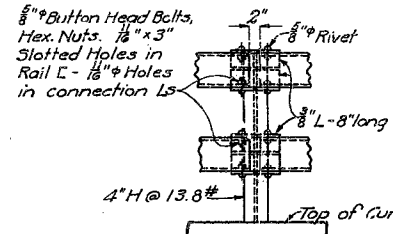
Note: Depth of outside stringers will in some cases be a fraction of an inch less than that of inside stringers and in order to keep bottom of slab horizontal it will be necessary to haunch slab down to top of outside stringers.



DETAIL OF RAIL BRACKETS AT ENDS OF SPAN

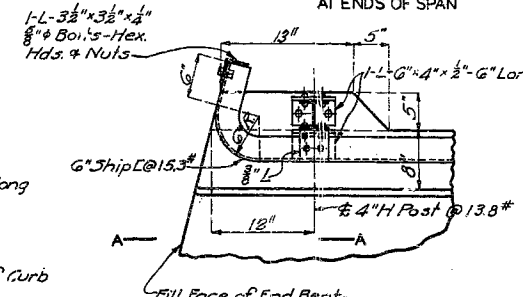


SECTION A-A

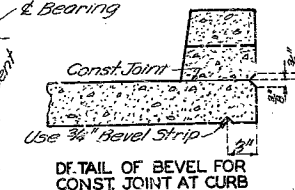


RAIL EXPANSION JOINT

Note: Use similar detail at rail splices. Omit slotted holes and 2" Exp. Gap.



LOCATION OF POSTS AT END BENTS



DETAIL OF BEVEL FOR CONST. JOINT AT CURB



TYPICAL PART ELEVATION SHOWING CURB DETAILS

## BRIDGE OVER CLEAR CREEK

STATE ROAD FROM ST. JAMES NORTH  
ABOUT 7.0 MILES NORTH OF ST. JAMES  
PROJECT NO. PWA 76, SB-53C STA. 191+02.5

PHELPS COUNTY

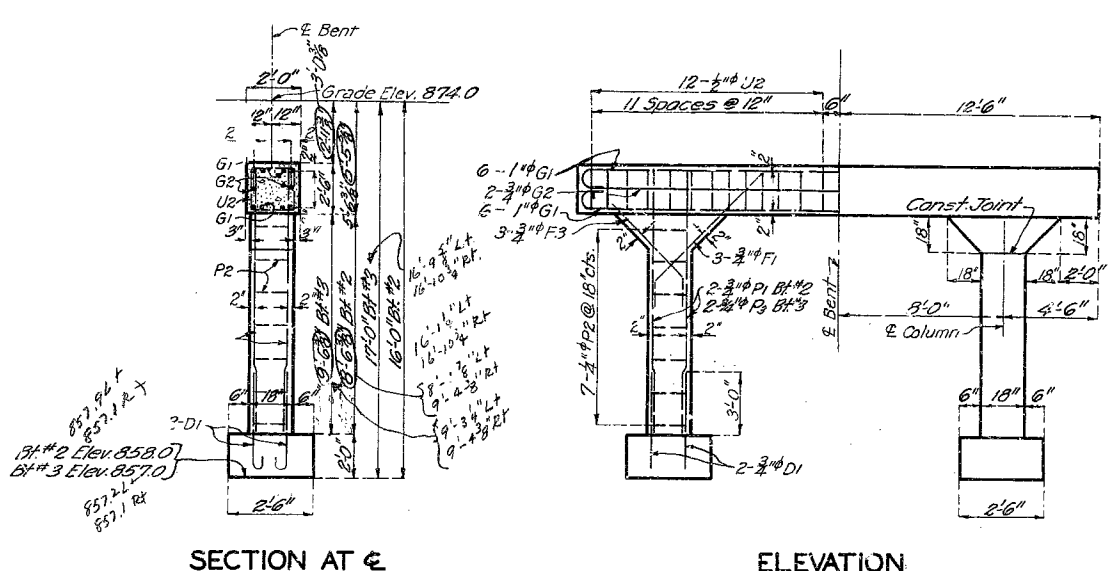
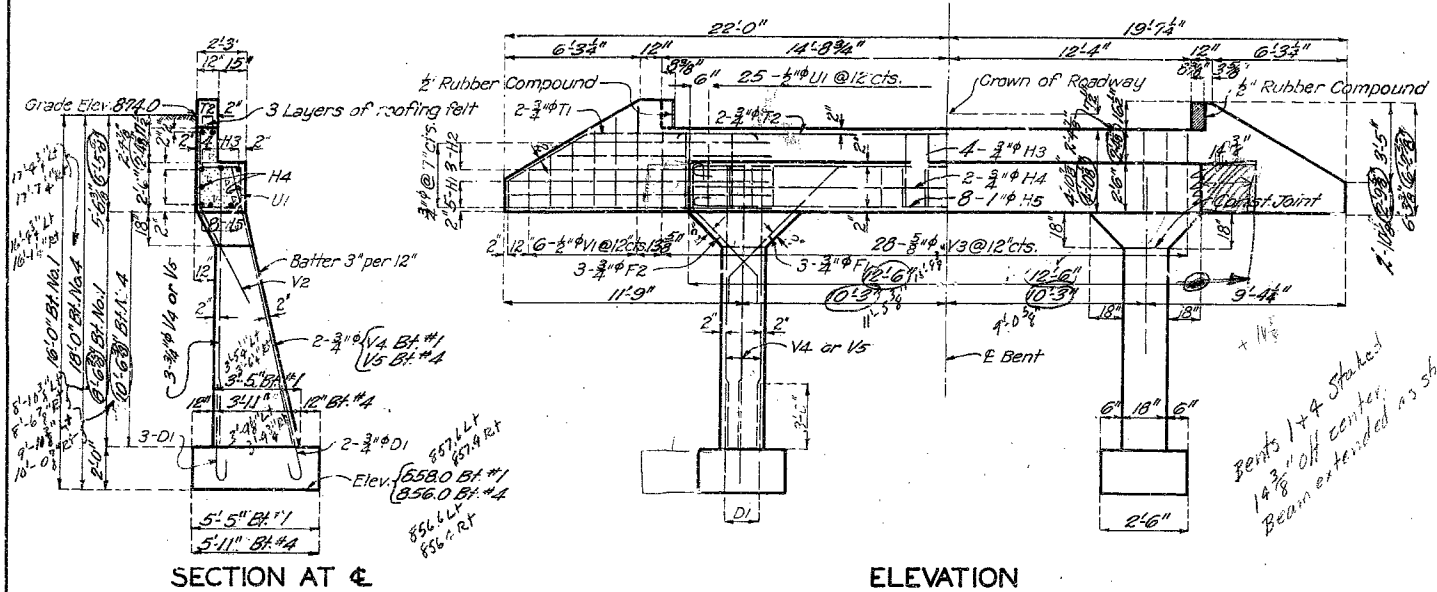
S-634

Drawn Aug. 1933 by C.A.F. Assembled Nov. 1933 by L.K.S.  
Traced Aug. 1933 by C.A.F. Checked Dec. 1933 by C.F.K.  
Checked Aug. 1933 by N.W.R.

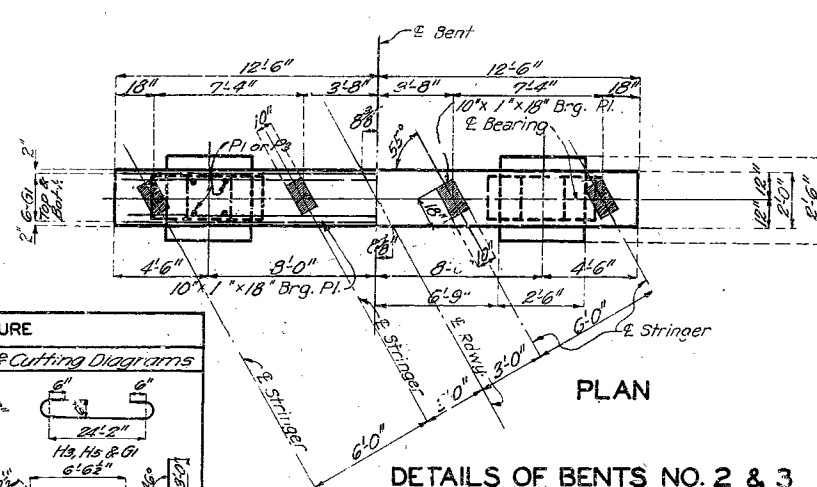
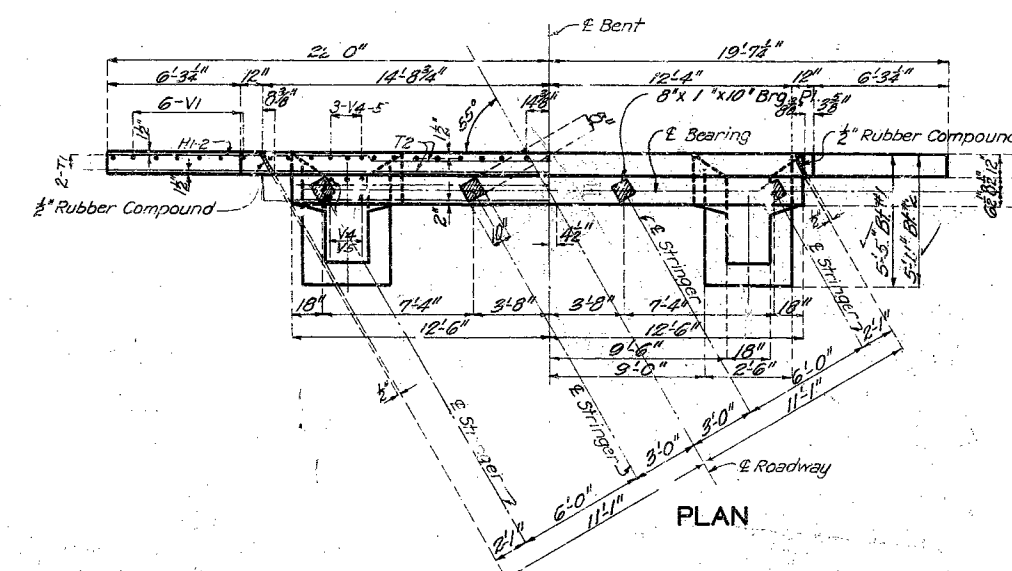
Sheet No. 3 of 3

MISSOURI STATE HIGHWAY DEPARTMENT

FED. ROAD DIST. NO.	STATE	FED. AID PROJ. NO.	FISCAL YEAR	SHEET NO.	TOTAL SHEETS
5	MO.	PWA 76, SB-33C	19		



Note: This drawing is not to scale. Follow dimensions.



BILL OF REINFORCING STEEL — SUBSTRUCTURE					Bending Sketches & Cutting Diagrams	
No.	Size	Length	Mark	Location		
Bents No. 1 & 4						
20	3/4"	5'-9"	D1	Footings		
12	3/4"	7'-9"	F1	Haunch		
12	3/4"	7'-9"	F2	"		
20	3/4"	12'-6"	H1	Wing		
6	3/4"	22'-0"	H2	"		
8	3/4"	26'-9"	H3	Beam		
4	3/4"	24'-9"	H4	"		
16	1"	26'-9"	H5	"		
8	3/4"	18'-3"	T1	Wing		
4	3/4"	26'-9"	T2	Backwall		
50	1/2"	9'-6"	U1	Beam		
12	3/4"	8'-9"	V1	Wing		
10	3/4"	12'-9"	V5	Column Bt #4		
56	3/4"	4'-6"	V3	Backwall		
17	3/4"	10'-9"	V4	Column Bt #4		
12	3/4"	7'-9"	V2	Columns		
Bents No. 2 & 3						
16	3/4"	5'-9"	D1	Footings		
24	3/4"	2'-3"	F3	Haunches		
24	1"	26'-9"	G1	Beam		
4	3/4"	7'-9"	G2	"		
8	3/4"	19'-9"	P1	Column Bt #2		
28	3/4"	6'-0"	P2	Columns		
8	3/4"	11'-9"	P3	Column Bt #4		
48	3/4"	9'-0"	U2	Beam		

2'-0" U1  
2'-0" U2  
15'-0" P2

U1, U2 & P2

Note: Dimensions are given along L of bars and are for camoulet lengths

Reinfor 13 "ars 3/4"

or over 1/2" diameter, which are bent to an angle greater than 90°, shall be of structural grade.

3 1/2" CUT 6 BARS

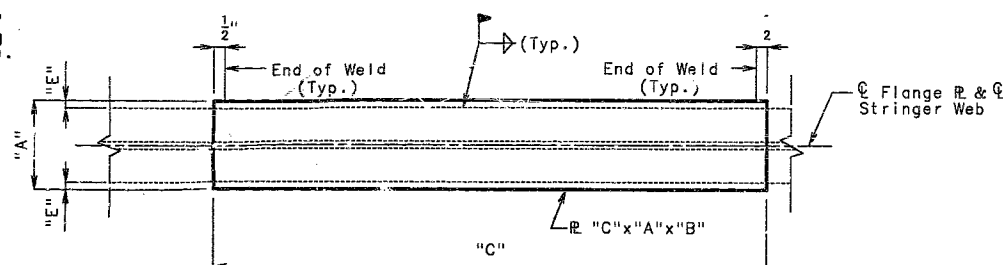
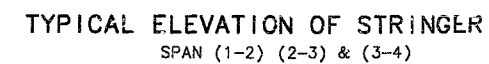
Sheet No. 2 of 2

Drawn Sept. 1930 by I.B.  
Traced Sept. 1930 by G.W. & R.J.G.  
Assembled Nov. 1933 by L.K.S.  
Checked Dec. 1933 by G.E.K.

BRIDGE OVER CLEAR CREEK  
STATE ROAD FROM ST. JAMES NORTH  
ABOUT 7.0 MILES NORTH OF ST. JAMES  
PROJECT NO. PWA 76, SB-33C STA. 191+02.5  
PHELPS COUNTY

STATE	PROJ. NO.	SHEET NO.
MO.	J950339	4
SEC/SUR	15 & 16 TWP 39N	RGE 6W

The temporary supports must be capable of safely supporting a service load of approximately \*\* tons per stringer. (Factor of safety not included) (See Special Provisions).



SECTION THRU STRINGER

DETAIL OF FLANGE R<sub>L</sub>

[illegible]

SHEET NO. 1 OF 1

DATE 3 / 9 / 94

S06341

WID 5,	FLA, 1, A
FLANCE BRACE	REVISED
AUG. 1993	NOV. 1993



Missouri Department of Transportation  
Bridge Inventory and Inspection System  
Structural Inventory & Appraisal Sheet

November 4, 2019  
11:22:24am

COUNTY : PHELPS      BRIDGE : S0634 1      REVIEW STATUS : APPROVED      NBI STATUS : P  
RECORD TYPE :      ROUTE CARRIED 'ON' STRUCT      RUN DATE : 2/3/2017      SUBMITTAL YEAR : 2016

GENERAL STRUCTURE INFORMATION			ROUTE DESIGNATION INFORMATION		
1	State	MISSOURI	5A	Record Type	ROUTE CARRIED 'ON' STRUCT
2	District	CD	5B	Route Signing Prefix	MO
3	County	PHELPS	5C	Designated Level of Service	MAINLINE
8	Federal ID No.	8945	5D	Route Number	0000B
27	Year Built	1934	5E	Directional Suffix	NOT APPLICABLE
106	Year Reconstructed	1994	7	Facility Carried	RT B S
42A	Type of Service On	HIGHWAY	12	Base Hwy. Network	NO
21	Structure Maintenance	STATE HIGHWAY AGENCY	13A	LRS Inventory Route No.	
22	Structure Owner	STATE HIGHWAY AGENCY	13B	Subroute No.	
33	Br. Median Code	NO MEDIAN	20	Toll Status	ON FREE ROAD
37	Historical Significance	HISTORICAL SIGNIF UNKNWN	26	Functional Classification	07-RURAL MAJOR COLLECTOR
101	Parallel Struc Desg	NONE EXISTS	28A	Lanes on Structure	02
103	Temporary Structure	NOT TEMPORARY	100	STRAHNET Designation	RTE NOT A DEFENSE HWY
112	NBIS Bridge Length	YES	104	National Highway System	NOT ON NHS
			105	Federal Lands Highway	NOT APPLICABLE
			110	Designated Nat. Network	NO
STRUCTURE LOCATION INFORMATION			STRUCTURE TRAFFIC INFORMATION		
4	Place	DAWSON	29	AADT	425
	Code	18514	30	AADT Year	2016
9	Location	S 15 T 39 N R 6 W	102	Direction of Traffic	2-WAY TRAFFIC
11	Milepoint	14.55 miles	109	AADT Truck Percent	10%
16	Latitude	38 D 6 M 11 S	114	Future AADT	637
17	Longitude	91 D 34 M 50 S	115	Future AADT Year	2037
UNDERRECORD INFORMATION			STRUCTURE GEOMETRIC INFORMATION		
6	Features Intersected	CLEAR CR	10	Inventory Rte. Vert. Clear	99 Ft. 99 In.
42B	Type of Service Under	WATERWAY	19	By pass Detour Length	29.76 miles
28B	Lanes Under Structure	00	32	Approach Roadway Width	20 Ft. 0 In.
54A	Vert. Clearance Ref.	N/A	34	Skew	35.00 Degrees
54B	Vert. Clearance	0 Ft. 0 In.	35	Struct. Flared	NO
55A	Rt. Lat Clear Ref.	N/A	47	Total Horiz. Clear	20 Ft. 0 In.
55B	Rt. Lat Clearance	0 Ft. 0 In.	48	Maximum Span Length	50 Ft. 10 In.
56	Left Lat Clearance	0 Ft. 0 In.	49	Structure Length	150 Ft. 0 In.
38	Navigation Control	PERMIT NOT REQ	50A	Left Curb/Sidewalk Width	0 Ft. 0 In.
39	Nav Vertical Clear	0 Ft. 0 In.	50B	Right Curb/Sidewalk Width	0 Ft. 0 In.
40	Nav Horizontal Clear	0 Ft. 0 In.	51	Curb to Curb Br. Width	20 Ft. 0 In.
111	Nav. Pier Protection		52	Deck Width (Out-Out)	21 Ft. 3 In.
116	Nav. Cl. Vert. Clear		53	Vert. Clearance Over Deck	99 Ft. 99 In.

Design\_No = S0634





Missouri Department of Transportation  
Bridge Inventory and Inspection System  
Structural Inventory & Appraisal Sheet

November 4, 2019  
11:22:24am

COUNTY : PHELPS BRIDGE : S0634 1 REVIEW STATUS : APPROVED NBI STATUS : P  
RECORD TYPE : ROUTE CARRIED 'ON' STRUCT RUN DATE : 2/3/2017 SUBMITTAL YEAR : 2016

LOAD RATING AND POSTING INFORMATION			MATERIAL/CONSTRUCTION INFORMATION		
31	Design Load	H 10	43A	Main Struc. Mat type	STEEL
41	Structure Status	P - POSTED FOR LOAD	43B	Main struc Constr. Type	STRINGER/MULTIBEAM - GRD
63	Oper. Rating Meth.	LOAD FACTOR	45	# of Main Spans	3
64	Operating Rating	27 Tons.	44A	Appr Struc. Mat type	
65	Inventory Rating Meth	LOAD FACTOR	44B	Appr Struc. Cnstr. type	
66	Inventory Rating	16 Tons.	46	# of Approach Span	0
70	Bridge Posting Code	0.1-9.9% BELOW	107	Deck Mat/Constr.	1 CONCRETE CIP
PROPOSED IMPROVEMENT INFORMATION			108A	Wear Surf Mat/Constr.	6 BITUMINOUS
Sufficiency Rating 40.3 Percent			108B	Membrane Mat/Constr.	0 NONE
Deficiency Rating FUNCTIONAL			108C	Deck Protect Mat/Constr.	0 NONE
Funding Eligibility FULL			CONDITION RATING INFORMATION		
75A	Proposed Work	REPLACEMENT SUBSTND LOAD	58	Deck Cond. Rating	5
75B	Work Done By	Contract	59	Superstructure Cond. Rating	5
76	New Struc Length	183 Ft. 8 In.	60	Substructure Cond. Rating	6
94	Struc Improve Cost	\$ 640,000	61	Channel /Channel Protection Cond. Rating	6
95	Roadway Improve Cost	\$ 64,000	62	Culvert Cond. Rating	N
96	Total Project Cost	\$ 960,000	INSPECTION INFORMATION		
97	Year of Cost Estimates	2017	90	Gen. Insp Date	9 / 15
APPRAISAL RATING INFORMATION			91	Gen. Insp. Frequency	24 Months
36A	Br. Rail App. Rating	DOES NOT MEET ACCEPT STND	92A	Frac. Critical Inspection	N Months
36B	Transition Rail App. Rating	DOES NOT MEET ACCEPT STND	93A	Frac. Critical Insp. Date	
36C	Approach Rail App. Rating	DOES NOT MEET ACCEPT STND	92B	Underwater Inspection	N Months
36D	Rail End Treat. App. Rating	DOES NOT MEET ACCEPT STND	93B	Underwater Insp. Date	
67	Struc Eval App. Rating	4	92C	Special Inspection	N Months
68	Deck Geometry App. Rating	3	93C	Special Inspection Date	
69	Underclearance App. Rating	N	BORDER BRIDGE INFORMATION		
71	Waterway Adeq. App. Rating	6	98	Neighboring State Code	
72	Approach Road App. Rating	6	98B	Neighboring State % Respon	
113	Scour Assess App. Rating	8	99	Neighboring State Struc. No.	
APPROVED POSTING INFORMATION			FIELD POSTING INFORMATION		
Approved Posting Category S-7			Field Posting Category S-7		
Ton1 Ton2 Ton3			Ton1 Ton2 Ton3		
Tonnage Values for Posting Sign 21			Tonnage Values for Posting Sign 21		
General Text for Posting Sign			General Text for Posting Sign		
TRUCKS OVER 21 TONS 15 MPH ON BRIDGE.			TRUCKS OVER 21 TONS 15 MPH ON BRIDGE.		

Design\_No = S0634



Missouri Department of Transportation  
Bridge Inventory and Inspection System  
Structural Inventory & Appraisal Sheet

November 4, 2019  
11:22:24am

COUNTY : PHELPS BRIDGE : S0634 1 REVIEW STATUS : APPROVED NBI STATUS : P  
RECORD TYPE : ROUTE CARRIED 'ON' STRUCT RUN DATE : 1/11/2018 SUBMITTAL YEAR : 2017

GENERAL STRUCTURE INFORMATION			ROUTE DESIGNATION INFORMATION		
1	State	MISSOURI	5A	Record Type	ROUTE CARRIED 'ON' STRUCT
2	District	CD	5B	Route Signing Prefix	MO
3	County	PHELPS	5C	Designated Level of Service	MAINLINE
8	Federal ID No.	8945	5D	Route Number	0000B
27	Year Built	1934	5E	Directional Suffix	NOT APPLICABLE
106	Year Reconstructed	1994	7	Facility Carried	RT B S
42A	Type of Service On	HIGHWAY	12	Base Hwy. Network	NO
21	Structure Maintenance	STATE HIGHWAY AGENCY	13A	LRS Inventory Route No.	
22	Structure Owner	STATE HIGHWAY AGENCY	13B	Subroute No.	
33	Br. Median Code	NO MEDIAN	20	Toll Status	ON FREE ROAD
37	Historical Significance	HISTORICAL SIGNIF UNKNWN	26	Functional Classification	07-RURAL MAJOR COLLECTOR
101	Parallel Struc Desg	NONE EXISTS	28A	Lanes on Structure	02
103	Temporary Structure	NOT TEMPORARY	100	STRAHNET Designation	RTE NOT A DEFENSE HWY
112	NBIS Bridge Length	YES	104	National Highway System	NOT ON NHS
			105	Federal Lands Highway	NOT APPLICABLE
			110	Designated Nat. Network	NO
STRUCTURE LOCATION INFORMATION			STRUCTURE TRAFFIC INFORMATION		
4	Place	DAWSON	29	AADT	425
	Code	18514	30	AADT Year	2016
9	Location	S 15 T 39 N R 6 W	102	Direction of Traffic	2-WAY TRAFFIC
11	Milepoint	14.55 miles	109	AADT Truck Percent	10%
16	Latitude	38 D 6 M 11 S	114	Future AADT	637
17	Longitude	91 D 34 M 50 S	115	Future AADT Year	2036
UNDERRECORD INFORMATION			STRUCTURE GEOMETRIC INFORMATION		
6	Features Intersected	CLEAR CR	10	Inventory Rte. Vert. Clear	99 Ft. 99 In.
42B	Type of Service Under	WATERWAY	19	By pass Detour Length	29.76 miles
28B	Lanes Under Structure	00	32	Approach Roadway Width	20 Ft. 0 In.
54A	Vert. Clearance Ref.	N/A	34	Skew	35.00 Degrees
54B	Vert. Clearance	0 Ft. 0 In.	35	Struct. Flared	NO
55A	Rt. Lat Clear Ref.	N/A	47	Total Horiz. Clear	20 Ft. 0 In.
55B	Rt. Lat Clearance	0 Ft. 0 In.	48	Maximum Span Length	50 Ft. 10 In.
56	Left Lat Clearance	0 Ft. 0 In.	49	Structure Length	150 Ft. 0 In.
38	Navigation Control	PERMIT NOT REQ	50A	Left Curb/Sidewalk Width	0 Ft. 0 In.
39	Nav Vertical Clear	0 Ft. 0 In.	50B	Right Curb/Sidewalk Width	0 Ft. 0 In.
40	Nav Horizontal Clear	0 Ft. 0 In.	51	Curb to Curb Br. Width	20 Ft. 0 In.
111	Nav. Pier Protection		52	Deck Width (Out-Out)	21 Ft. 3 In.
116	Nav. Cl. Vert. Clear		53	Vert. Clearance Over Deck	99 Ft. 99 In.

Design\_No = S0634





Missouri Department of Transportation  
Bridge Inventory and Inspection System  
Structural Inventory & Appraisal Sheet

November 4, 2019  
11:22:24am

COUNTY : PHELPS BRIDGE : S0634 1 REVIEW STATUS : APPROVED NBI STATUS : P  
RECORD TYPE : ROUTE CARRIED 'ON' STRUCT RUN DATE : 1/11/2018 SUBMITTAL YEAR : 2017

LOAD RATING AND POSTING INFORMATION				MATERIAL/CONSTRUCTION INFORMATION				
31	Design Load	H 10		43A	Main Struc. Mat type	STEEL		
41	Structure Status	P - POSTED FOR LOAD		43B	Main struc Constr. Type	STRINGER/MULTIBEAM - GRD		
63	Oper. Rating Meth.	LOAD FACTOR		45	# of Main Spans	3		
64	Operating Rating	27 Tons.		44A	Appr Struc. Mat type			
65	Inventory Rating Meth	LOAD FACTOR		44B	Appr Struc. Cnstr. type			
66	Inventory Rating	16 Tons.		46	# of Approach Span	0		
70	Bridge Posting Code	0.1-9.9% BELOW		107	Deck Mat/Constr.	1 CONCRETE CIP		
PROPOSED IMPROVEMENT INFORMATION				108A	Wear Surf Mat/Constr.	6 BITUMINOUS		
	Sufficiency Rating	38.0	Percent	108B	Membrane Mat/Constr.	0 NONE		
	Deficiency Rating	STRUCTURAL		108C	Deck Protect Mat/Constr.	0 NONE		
	Funding Eligibility	FULL		CONDITION RATING INFORMATION				
75A	Proposed Work	REPLACEMENT SUBSTND LOAD		58	Deck Cond. Rating	4		
75B	Work Done By	Contract		59	Superstructure Cond. Rating	5		
76	New Struc Length	183 Ft. 8 In.		60	Substructure Cond. Rating	6		
94	Struc Improve Cost	\$ 640,000		61	Channel /Channel Protection Cond. Rating	6		
95	Roadway Improve Cost	\$ 64,000		62	Culvert Cond. Rating	N		
96	Total Project Cost	\$ 960,000		INSPECTION INFORMATION				
97	Year of Cost Estimates	2018		90	Gen. Insp Date	9 / 17		
APPRAISAL RATING INFORMATION				91	Gen. Insp. Frequency	24	Months	
36A	Br. Rail App. Rating	DOES NOT MEET ACCEPT STND		92A	Frac. Critical Inspection	N	Months	
36B	Transition Rail App. Rating	DOES NOT MEET ACCEPT STND		93A	Frac. Critical Insp. Date			
36C	Approach Rail App. Rating	DOES NOT MEET ACCEPT STND		92B	Underwater Inspection	N	Months	
36D	Rail End Treat. App. Rating	DOES NOT MEET ACCEPT STND		93B	Underwater Insp. Date			
67	Struc Eval App. Rating	4		92C	Special Inspection	N	Months	
68	Deck Geometry App. Rating	3		93C	Special Inspection Date			
69	Underclearance App. Rating	N		BORDER BRIDGE INFORMATION				
71	Waterway Adeq. App. Rating	6		98	Neighboring State Code			
72	Approach Road App. Rating	6		98B	Neighboring State % Respon			
113	Scour Assess App. Rating	8		99	Neighboring State Struc. No.			
APPROVED POSTING INFORMATION				FIELD POSTING INFORMATION				
Approved Posting Category		S-7		Field Posting Category		S-7		
		Ton1	Ton2	Ton3		Ton1	Ton2	Ton3
Tonnage Values for Posting Sign		21		Tonnage Values for Posting Sign		21		
General Text for Posting Sign				General Text for Posting Sign				
TRUCKS OVER 21 TONS 15 MPH ON BRIDGE.				TRUCKS OVER 21 TONS 15 MPH ON BRIDGE.				

Design\_No = S0634



Missouri Department of Transportation  
Bridge Inventory and Inspection System  
Structural Inventory & Appraisal Sheet

November 4, 2019  
11:22:24am

COUNTY : PHELPS BRIDGE : S0634 1 REVIEW STATUS : APPROVED NBI STATUS : P  
RECORD TYPE : ROUTE CARRIED 'ON' STRUCT RUN DATE : 1/11/2019 SUBMITTAL YEAR : 2018

GENERAL STRUCTURE INFORMATION			ROUTE DESIGNATION INFORMATION		
1	State	MISSOURI	5A	Record Type	ROUTE CARRIED 'ON' STRUCT
2	District	CD	5B	Route Signing Prefix	MO
3	County	PHELPS	5C	Designated Level of Service	MAINLINE
8	Federal ID No.	8945	5D	Route Number	0000B
27	Year Built	1934	5E	Directional Suffix	NOT APPLICABLE
106	Year Reconstructed	1994	7	Facility Carried	RT B S
42A	Type of Service On	HIGHWAY	12	Base Hwy. Network	NO
21	Structure Maintenance	STATE HIGHWAY AGENCY	13A	LRS Inventory Route No.	
22	Structure Owner	STATE HIGHWAY AGENCY	13B	Subroute No.	
33	Br. Median Code	NO MEDIAN	20	Toll Status	ON FREE ROAD
37	Historical Significance	HISTORICAL SIGNIF UNKNWN	26	Functional Classification	07-RURAL MAJOR COLLECTOR
101	Parallel Struc Desg	NONE EXISTS	28A	Lanes on Structure	02
103	Temporary Structure	NOT TEMPORARY	100	STRAHNET Designation	RTE NOT A DEFENSE HWY
112	NBIS Bridge Length	YES	104	National Highway System	NOT ON NHS
			105	Federal Lands Highway	NOT APPLICABLE
			110	Designated Nat. Network	NO
STRUCTURE LOCATION INFORMATION			STRUCTURE TRAFFIC INFORMATION		
4	Place	DAWSON	29	AADT	429
	Code	18514	30	AADT Year	2017
9	Location	S 15 T 39 N R 6 W	102	Direction of Traffic	2-WAY TRAFFIC
11	Milepoint	14.55 miles	109	AADT Truck Percent	10%
16	Latitude	38 D 6 M 11 S	114	Future AADT	643
17	Longitude	91 D 34 M 50 S	115	Future AADT Year	2037
UNDERRECORD INFORMATION			STRUCTURE GEOMETRIC INFORMATION		
6	Features Intersected	CLEAR CR	10	Inventory Rte. Vert. Clear	99 Ft. 99 In.
42B	Type of Service Under	WATERWAY	19	By pass Detour Length	29.76 miles
28B	Lanes Under Structure	00	32	Approach Roadway Width	20 Ft. 0 In.
54A	Vert. Clearance Ref.	N/A	34	Skew	35.00 Degrees
54B	Vert. Clearance	0 Ft. 0 In.	35	Struct. Flared	NO
55A	Rt. Lat Clear Ref.	N/A	47	Total Horiz. Clear	20 Ft. 0 In.
55B	Rt. Lat Clearance	0 Ft. 0 In.	48	Maximum Span Length	50 Ft. 10 In.
56	Left Lat Clearance	0 Ft. 0 In.	49	Structure Length	150 Ft. 0 In.
38	Navigation Control	PERMIT NOT REQ	50A	Left Curb/Sidewalk Width	0 Ft. 0 In.
39	Nav Vertical Clear	0 Ft. 0 In.	50B	Right Curb/Sidewalk Width	0 Ft. 0 In.
40	Nav Horizontal Clear	0 Ft. 0 In.	51	Curb to Curb Br. Width	20 Ft. 0 In.
111	Nav. Pier Protection		52	Deck Width (Out-Out)	21 Ft. 3 In.
116	Nav. Cl. Vert. Clear		53	Vert. Clearance Over Deck	99 Ft. 99 In.

Design\_No = S0634



Missouri Department of Transportation  
Bridge Inventory and Inspection System  
Structural Inventory & Appraisal Sheet

November 4, 2019  
11:22:24am

COUNTY : PHELPS BRIDGE : S0634 1 REVIEW STATUS : APPROVED NBI STATUS : P  
RECORD TYPE : ROUTE CARRIED 'ON' STRUCT RUN DATE : 1/11/2019 SUBMITTAL YEAR : 2018

LOAD RATING AND POSTING INFORMATION			MATERIAL/CONSTRUCTION INFORMATION			
31	Design Load	H 10	43A	Main Struc. Mat type	STEEL	
41	Structure Status	P - POSTED FOR LOAD	43B	Main struc Constr. Type	STRINGER/MULTIBEAM - GRD	
63	Oper. Rating Meth.	LOAD FACTOR	45	# of Main Spans	3	
64	Operating Rating	27 Tons.	44A	Appr Struc. Mat type		
65	Inventory Rating Meth	LOAD FACTOR	44B	Appr Struc. Cnstr. type		
66	Inventory Rating	16 Tons.	46	# of Approach Span	0	
70	Bridge Posting Code	0.1-9.9% BELOW	107	Deck Mat/Constr.	1 CONCRETE CIP	
			108A	Wear Surf Mat/Constr.	6 BITUMINOUS	
			108B	Membrane Mat/Constr.	0 NONE	
			108C	Deck Protect Mat/Constr.	0 NONE	
PROPOSED IMPROVEMENT INFORMATION			CONDITION RATING INFORMATION			
	Sufficiency Rating	38.0 Percent	58	Deck Cond. Rating	4	
	Deficiency Rating	STRUCTURAL	59	Superstructure Cond. Rating	5	
	Funding Eligibility	FULL	60	Substructure Cond. Rating	6	
75A	Proposed Work	REPLACEMENT SUBSTND LOAD	61	Channel /Channel Protection Cond. Rating	6	
75B	Work Done By	Contract	62	Culvert Cond. Rating	N	
76	New Struc Length	183 Ft. 8 In.				
94	Struc Improve Cost	\$ 640,000	INSPECTION INFORMATION			
95	Roadway Improve Cost	\$ 64,000	90	Gen. Insp Date	9 / 17	
96	Total Project Cost	\$ 960,000	91	Gen. Insp. Frequency	24 Months	
97	Year of Cost Estimates	2019	92A	Frac. Critical Inspection	N Months	
			93A	Frac. Critical Insp. Date		
			92B	Underwater Inspection	N Months	
			93B	Underwater Insp. Date		
			92C	Special Inspection	N Months	
			93C	Special Inspection Date		
APPRAISAL RATING INFORMATION			BORDER BRIDGE INFORMATION			
36A	Br. Rail App. Rating	DOES NOT MEET ACCEPT STND	98	Neighboring State Code		
36B	Transition Rail App. Rating	DOES NOT MEET ACCEPT STND	98B	Neighboring State % Respon		
36C	Approach Rail App. Rating	DOES NOT MEET ACCEPT STND	99	Neighboring State Struc. No.		
36D	Rail End Treat. App. Rating	DOES NOT MEET ACCEPT STND				
67	Struc Eval App. Rating	4	APPROVED POSTING INFORMATION			
68	Deck Geometry App. Rating	3	FIELD POSTING INFORMATION			
69	Underclearance App. Rating	N	Approved Posting Category	S-7	Field Posting Category	S-7
71	Waterway Adeq. App. Rating	6		Ton1 Ton2 Ton3		Ton1 Ton2 Ton3
72	Approach Road App. Rating	6	Tonnage Values for Posting Sign	21	Tonnage Values for Posting Sign	21
113	Scour Assess App. Rating	8	General Text for Posting Sign	TRUCKS OVER 21 TONS 15 MPH ON BRIDGE.	General Text for Posting Sign	TRUCKS OVER 21 TONS 15 MPH ON BRIDGE.

Design\_No = S0634



Missouri Department of Transportation  
Bridge Inventory and Inspection System  
Structural Inventory & Appraisal Sheet

November 4, 2019  
11:22:24am

COUNTY : PHELPS BRIDGE : S0634 1 REVIEW STATUS : REVIEW NBI STATUS : T  
RECORD TYPE : ROUTE CARRIED 'ON' STRUCT RUN DATE : 10/4/2019 SUBMITTAL YEAR : 2019

GENERAL STRUCTURE INFORMATION			ROUTE DESIGNATION INFORMATION		
1	State	MISSOURI	5A	Record Type	ROUTE CARRIED 'ON' STRUCT
2	District	CD	5B	Route Signing Prefix	MO
3	County	PHELPS	5C	Designated Level of Service	MAINLINE
8	Federal ID No.	8945	5D	Route Number	0000B
27	Year Built	1934	5E	Directional Suffix	NOT APPLICABLE
106	Year Reconstructed	1994	7	Facility Carried	RT B S
42A	Type of Service On	HIGHWAY	12	Base Hwy. Network	NO
21	Structure Maintenance	STATE HIGHWAY AGENCY	13A	LRS Inventory Route No.	
22	Structure Owner	STATE HIGHWAY AGENCY	13B	Subroute No.	
33	Br. Median Code	NO MEDIAN	20	Toll Status	ON FREE ROAD
37	Historical Significance	HISTORICAL SIGNIF UNKNWN	26	Functional Classification	07-RURAL MAJOR COLLECTOR
101	Parallel Struc Desg	NONE EXISTS	28A	Lanes on Structure	02
103	Temporary Structure	NOT TEMPORARY	100	STRAHNET Designation	RTE NOT A DEFENSE HWY
112	NBIS Bridge Length	YES	104	National Highway System	NOT ON NHS
			105	Federal Lands Highway	NOT APPLICABLE
			110	Designated Nat. Network	NO
STRUCTURE LOCATION INFORMATION			STRUCTURE TRAFFIC INFORMATION		
4	Place	DAWSON	29	AADT	418
	Code	18514	30	AADT Year	2018
9	Location	S 15 T 39 N R 6 W	102	Direction of Traffic	2-WAY TRAFFIC
11	Milepoint	14.66 miles	109	AADT Truck Percent	11%
16	Latitude	38 D 6 M 11 S	114	Future AADT	627
17	Longitude	91 D 34 M 50 S	115	Future AADT Year	2038
UNDERRECORD INFORMATION			STRUCTURE GEOMETRIC INFORMATION		
6	Features Intersected	CLEAR CR	10	Inventory Rte. Vert. Clear	99 Ft. 99 In.
42B	Type of Service Under	WATERWAY	19	By pass Detour Length	30.00 miles
28B	Lanes Under Structure	00	32	Approach Roadway Width	20 Ft. 0 In.
54A	Vert. Clearance Ref.	N/A	34	Skew	35.00 Degrees
54B	Vert. Clearance	0 Ft. 0 In.	35	Struct. Flared	NO
55A	Rt. Lat Clear Ref.	N/A	47	Total Horiz. Clear	20 Ft. 0 In.
55B	Rt. Lat Clearance	0 Ft. 0 In.	48	Maximum Span Length	50 Ft. 10 In.
56	Left Lat Clearance	0 Ft. 0 In.	49	Structure Length	150 Ft. 11 In.
38	Navigation Control	PERMIT NOT REQ	50A	Left Curb/Sidewalk Width	0 Ft. 0 In.
39	Nav Vertical Clear	0 Ft. 0 In.	50B	Right Curb/Sidewalk Width	0 Ft. 0 In.
40	Nav Horizontal Clear	0 Ft. 0 In.	51	Curb to Curb Br. Width	20 Ft. 0 In.
111	Nav. Pier Protection		52	Deck Width (Out-Out)	21 Ft. 4 In.
116	Nav. Cl. Vert. Clear		53	Vert. Clearance Over Deck	99 Ft. 99 In.

Design\_No = S0634



Missouri Department of Transportation  
Bridge Inventory and Inspection System  
Structural Inventory & Appraisal Sheet

November 4, 2019  
11:22:24am

COUNTY : PHELPS BRIDGE : S0634 1 REVIEW STATUS : REVIEW NBI STATUS : T  
RECORD TYPE : ROUTE CARRIED 'ON' STRUCT RUN DATE : 10/4/2019 SUBMITTAL YEAR : 2019

LOAD RATING AND POSTING INFORMATION			MATERIAL/CONSTRUCTION INFORMATION		
31	Design Load	H 10	43A	Main Struc. Mat type	STEEL
41	Structure Status	POSTED FOR LOAD	43B	Main struc Constr. Type	STRINGER/MULTIBEAM - GRD
63	Oper. Rating Meth.	LOAD FACTOR	45	# of Main Spans	3
64	Operating Rating	23 Tons.	44A	Appr Struc. Mat type	000
65	Inventory Rating Meth	LOAD FACTOR	44B	Appr Struc. Cnstr. type	000
66	Inventory Rating	14 Tons.	46	# of Approach Span	0
70	Bridge Posting Code	20.0-29.9% BELOW	107	Deck Mat/Constr.	1 CONCRETE CIP
PROPOSED IMPROVEMENT INFORMATION			108A	Wear Surf Mat/Constr.	6 BITUMINOUS
Sufficiency Rating 33.8 Percent			108B	Membrane Mat/Constr.	0 NONE
Deficiency Rating STRUCTURAL			108C	Deck Protect Mat/Constr.	0 NONE
Funding Eligibility FULL			CONDITION RATING INFORMATION		
75A	Proposed Work	REPLACEMENT SUBSTND LOAD	58	Deck Cond. Rating	4
75B	Work Done By	Contract	59	Superstructure Cond. Rating	5
76	New Struc Length	183 Ft. 9 In.	60	Substructure Cond. Rating	6
94	Struc Improve Cost	\$ 640,000	61	Channel /Channel Protection Cond. Rating	6
95	Roadway Improve Cost	\$ 64,000	62	Culvert Cond. Rating	N
96	Total Project Cost	\$ 960,000	INSPECTION INFORMATION		
97	Year of Cost Estimates	2019	90	Gen. Insp Date	9 / 19
APPRAISAL RATING INFORMATION			91	Gen. Insp. Frequency	24 Months
36A	Br. Rail App. Rating	DOES NOT MEET ACCEPT STND	92A	Frac. Critical Inspection	N Months
36B	Transition Rail App. Rating	DOES NOT MEET ACCEPT STND	93A	Frac. Critical Insp. Date	
36C	Approach Rail App. Rating	DOES NOT MEET ACCEPT STND	92B	Underwater Inspection	N Months
36D	Rail End Treat. App. Rating	DOES NOT MEET ACCEPT STND	93B	Underwater Insp. Date	
67	Struc Eval App. Rating	4	92C	Special Inspection	N Months
68	Deck Geometry App. Rating	3	93C	Special Inspection Date	
69	Underclearance App. Rating	N	BORDER BRIDGE INFORMATION		
71	Waterway Adeq. App. Rating	6	98	Neighboring State Code	
72	Approach Road App. Rating	6	98B	Neighboring State % Respon	
113	Scour Assess App. Rating	8	99	Neighboring State Struc. No.	
APPROVED POSTING INFORMATION			FIELD POSTING INFORMATION		
Approved Posting Category S-7			Field Posting Category S-7		
Ton1 Ton2 Ton3			Ton1 Ton2 Ton3		
Tonnage Values for Posting Sign 21			Tonnage Values for Posting Sign 21		
General Text for Posting Sign			General Text for Posting Sign		
TRUCKS OVER 21 TONS 15 MPH ON BRIDGE.			TRUCKS OVER 21 TONS 15 MPH ON BRIDGE.		

Design\_No = S0634