



**Missouri's
Local
Program**
*for community
development*

COVER SHEET

(This must accompany your firm's letter of interest and does not count in the page limit)

Firm's Full Legal
Name:

CJW Transportation Consultants, LLC

Firm Contact Name:

C. Jay Wynn, PE, PTOE

Contact Email
Address:

jwynn@gocjw.com

Firm's Mailing Address:

CJW Transportation Consultants, LLC

5051 S National, Suite 7A

Springfield, MO 65810

Work Category:

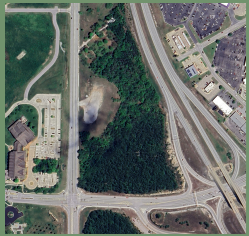
- Roadway Design
- Trails & Sidewalks
- Construction Inspection
- Traffic Engineering & TEAP
- Structures
- Environmental
- Historic Preservation
- Multimodal Planning / Systems and Facilities Design
- Transportation Planning – **NEW CATEGORY**



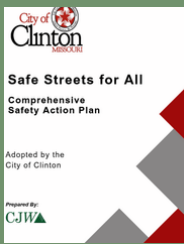
RELEVANT PROJECT EXPERIENCE



BU65 & 19th Street in Ozark (Ozark Marketplace Permit Job) - CJW completed a Traffic Impact Assessment for a 20-acre development affecting the signalized intersection of BU 65 (South St) & 19th Street, the US 65/South Street ramp termini, and several adjacent local intersections. CJW coordinated closely with SW District staff and the development team to evaluate operational impacts, identify improvement needs, and obtain MoDOT approval. Following the study, CJW designed signal improvements to enhance overall intersection safety & operations. *Project Reference: Mike Bock, PE @ 417.895.7646; Key Personnel: Jay Wynn, PE, PTOE, LSI (Principal-In-Charge); Garrett Evans, PE (Project Mgr.); Jeff Asher (UAV/GIS Coordinator)*



COFO Performing Arts Center Traffic Study - CJW completed a Traffic Study for the Performing Arts Center to evaluate impacts to the MoDOT system in Hollister. The study included traffic counts, intersection analysis, underpass evaluation, and turn-lane warrant evaluations, along with direct coordination with SW District staff. CJW worked with MoDOT to develop a customized trip-generation rate for the facility, demonstrating strong collaboration & trust between CJW & the SW District staff. *Project Reference: Mike Bock, PE @ 417.895.7646; Key Personnel: Jay Wynn, PE, PTOE, LSI (Principal-In-Charge); Garrett Evans, PE (Project Mgr.); Jeff Asher (UAV/GIS Coordinator)*



Clinton Safety Action Plan (SS4A Grant) – CJW developed a community-wide Safety Action Plan consistent with SS4A grant requirements. Work included identifying the High-Injury Network, analyzing crash patterns and contributing factors, evaluating emphasis areas, and recommending both systemic and site-specific safety improvements for city and state routes. The plan provided the COC with a data-driven framework for future safety investments & federal-aid funding opportunities. *Project Reference: Christy Maggi @ 660-885-6121 COC; Key Personnel: Jay Wynn, PE, PTOE, LSI (Principal-In-Charge); Garrett Evans, PE (Project Manager); Marc Thornsberry, PE (Senior Engineer), Jeff Asher (UAV/GIS Coordinator)*



Clinton RSAs (City & MoDOT Routes) – As part of the Safety Action Plan, CJW led two RSAs following FHWA RSA guidance—one for a MoDOT corridor and one for a city route. CJW facilitated multidisciplinary field reviews, documented key safety concerns, evaluated operational and geometric issues, and developed short- and long-term recommendations to support both MoDOT and the COC in prioritizing safety improvements. *Project Reference: Christy Maggi @ 660-885-6121 COC; Key Personnel: Jay Wynn, PE, PTOE, LSI (Principal-In-Charge); Garrett Evans, PE (Project Manager); Marc Thornsberry, PE (Senior Engineer), Jeff Asher (UAV/GIS Coordinator)*



JATSO Safety Action Plan (SS4A) – CJW prepared a Safety Action Plan for the JATSO consistent with SS4A requirements. Work included developing the regional High-Injury Network, analyzing crash trends and contributing factors across city, county, and MoDOT routes, identifying emphasis areas, and recommending systemic and site-specific safety strategies. The plan provided JATSO and its member jurisdictions with a data-driven framework to guide future safety investments & federal-aid funding opportunities. *Project Reference: Robert Lolley, Transportation Planner @ 417.624.0820 (COJ); Key Personnel: Jay Wynn, PE, PTOE, LSI (Principal-In-Charge); Marc Thornsberry, PE (Senior Engineer/Project Manager), Garrett Evans, PE (Transportation Manager) Jeff Asher (UAV/GIS Coordinator)*



Additional Projects

- FR 129 & FR 146
- Downstream Casino
- Gabby & Annie Baxter
- Access Management
- Wayfinding Evaluation
- Signal System Assessment

Client

- GCHD
- Quapaw Nation
- COJ
- COC
- COB
- COJ

Key Services

- Traffic Analysis, Roundabout Design, & Construction Adm.
- Traffic Analysis & Roundabout Design Review
- Hawk Pedestrian Safety Assessment and Signal Design
- Developed Access Management Policy for the City of Clinton
- Conducted an Evaluation of Branson's Colored Routes
- Equipment Inventory, Signal System Assessment, & Staffing Needs



QUALIFICATION OF PERSONNEL

CJW's traffic engineering team includes Professional Engineers (PEs) and Professional Traffic Operations Engineers (PTOE) with extensive experience in traffic safety, operations, and multimodal transportation planning. They are supported by senior designers, CADD technicians, and technical staff who bring substantial experience working on LPA and MoDOT-coordinated projects across Missouri. Our team's expertise includes operational modeling, crash and systemic safety analysis, warrants reviews, pedestrian and bicycle assessments, ADA compliance evaluations, access management, Traffic Impact Study development, traffic control design, and signing and pavement marking layouts.

We utilize industry-standard analytical and design tools including HCM software, Synchro/SimTraffic, HSM methodologies, systemic safety screening tools, GIS platforms, traffic data collection applications, and modern 2D/plan-development software for traffic control, signing, striping, and conceptual layouts. CJW project managers guide LPAs through the full TEAP process, including scoping, MoDOT coordination, data collection, analysis, public engagement, and preparation of clear, actionable recommendations tailored to community needs.

FAMILIARITY/CAPABILITY

CJW is fully familiar with MoDOT's TEAP program, the LPA Process Manual, Federal-aid documentation requirements, and the review procedures used by district traffic & planning staff. Our capabilities include traffic data collection, operational and safety analysis, multimodal assessments, access management reviews, signal evaluations, alternatives development, TEAP-compliant reporting, and planning-level cost estimating. We prepare clear recommendations, graphics, and exhibits that allow LPAs to advance improvements into design or future funding applications.

CJW regularly works with LPAs to identify needs early, define study limits, collect appropriate data, and develop practical improvement options that align with community goals, budgets, and available right-of-way. Our team has experience tailoring analysis methods to project context—from small residential intersections to complex urban corridors—and we understand how to balance safety, operations, and multimodal considerations within the constraints of local systems. We also assist LPAs with public engagement materials, council presentations, and grant support to help communicate findings & advance recommended improvements.



ACCESSIBILITY

CJW is headquartered in Springfield, Missouri, providing convenient access to LPAs within the Southwest, Central, and Southeast MoDOT districts. Our staff is readily available for field reviews, coordination meetings, stakeholder discussions, and on-site traffic observations. We prioritize prompt communication and flexible scheduling to meet the often-tight timelines associated with TEAP and other traffic studies.

In addition to our physical proximity, CJW maintains a responsive workflow that allows us to quickly mobilize for data collection, speed studies, turning-movement counts, or site safety reviews. Our project managers remain actively engaged throughout study development, ensuring LPAs and MoDOT district staff have consistent points of contact and timely updates. This accessibility supports efficient project delivery and helps LPAs keep studies aligned with funding, council schedules, or grant application deadlines.

CJW appreciates the opportunity to be considered for MoDOT's LPA On-Call Traffic Engineering & TEAP program. We are committed to providing practical, data-driven solutions that improve safety, mobility, and operational efficiency for Missouri communities.

Sincerely,

C. Jay Wynn, PE, PTOE, LSI
CEO & Owner
CJW Transportation Consultants, LLC



Transportation Services

CJW's broad background in transportation planning, traffic engineering, traffic operations, and traffic safety analysis makes us the perfect choice for your transportation projects. Our team has completed 1,000s of transportation services for both public & private sector clients across SW Missouri. Our team also has 90+ years of transportation engineering experience at the federal, state, and local levels. **CJW** understands the challenges of programming, operating, maintaining, and designing transportation investments with real-world leadership experience with LPAs, MoDOT, and FHWA.

CJW's staff includes professional engineers with decades of Municipal Public Works Operations & Design experience which has helped us to earn a reputation as the go-to firm for transportation planning, traffic operations, and traffic studies in SW Missouri. Our team has significant experience in traffic safety & traffic analysis for both public & private sector projects. **CJW** has conducted 100s of traffic studies for local agencies, private developers, other consulting firms, and MoDOT. Our team is well-versed in several traffic modeling packages (i.e., Synchro, VISSIM, Highway Capacity Software, and Sidra). We understand the strengths of each software and can assist our clients in choosing the right product for their application. **CJW's** traffic safety experience provides clients with practical design options that deploy proven safety countermeasures to maximize safety benefits for all modes of travel. **CJW** is **highly regarded**, with **professional expertise** and a **client-first commitment** to deliver a variety of **Transportation Services** including:

PLANNING

- Transportation Planning
- Technical Assistance
- Transportation Master Plans
- Transportation Enhancements
- Traffic Studies & Analysis
- ITS Architecture
- Plan Reviews
- Parking Studies
- Signal Timing
- ADA Transition Plans
- Highway Rail Crossing Studies
- Road Safety Assessments (RSA)
- Safe Routes to Schools Studies
- Pedestrian Safety Action Plans (SS4A)
- Comprehensive Safety Action Plans
- HSM Policy & Applications

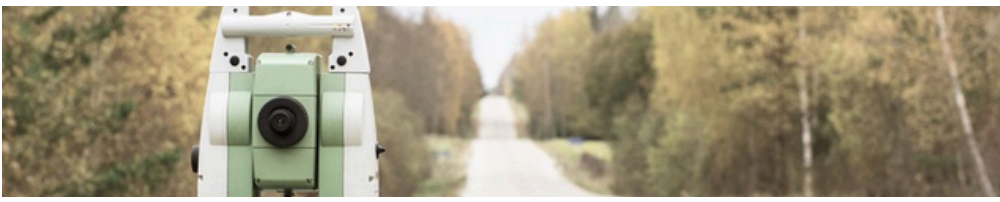
DESIGN & OPERATIONS

- Roadway Design
- Complete Streets Design
- Traffic Management
- ITS Management & Design
- Parking Lot Design
- Streetscape Design
- Road Diets
- Work Zone Safety
- Highway Signage
- Park & Trails
- ADA Sidewalk Design
- Green Infrastructure
- Quantitative Safety Analysis
- Signalized Intersections
- Roundabouts
- Interchanges

CONSTRUCTION

- Plan Review
- Estimate of Probable Cost
- Construction Observation
- Contract Administration





Surveying & Mapping

CJW's Surveying Department has decades of experience in surveying and mapping, utilizing advanced technologies such as Unmanned Aerial Vehicles (UAVs) and drones to deliver accurate and cost-effective surveys. Projects that once required a fully-staffed survey crew months to complete can now be surveyed in days using UAVs with a 1-2 person crew. UAVs are also used to collect survey and mapping data on projects where there are safety concerns or areas that are extremely difficult for surveyors to access, such as high-speed roadways, waterways, steep terrain, dense vegetation, toxic waste areas, or structures.



Our professional surveying expertise allows our clients to benefit from the extensive knowledge **CJW team** members have gained on numerous projects—small, large, routine, and complex—over the years. This capability reduces the cost and duration of field and office tasks while maintaining **CJW's** quality and service delivery standards.

The **CJW Surveying Department** is **highly regarded** for its **professional expertise** and **client-first commitment**. We successfully deliver a variety of Surveying and Mapping Services, including:

- Municipal Survey Services
- Boundary Surveys
- Topographic Surveys
- Mobile LIDAR Surveys
- Lot Surveys
- Utility Surveys
- Construction Staking
- Prepare & Certify Legal Descriptions
- Global Positioning System Surveys
- Aerial Mapping Control Surveys
- Aerial Imagery/Photography
- Data Collection/Reduction
- Horizontal & Vertical Control Networks
- Platting GLO Retracement Surveys
- ALTA/NSPS Land Title Surveys
- Easement Surveys & Acquisition
- ROW Surveys & Acquisition
- FEMA Elevation Certificates
- Floodway Surveys, LOMA, LOMR
- Subdivision Planning & Platting Surveys
- Civil Engineering Designs
- As-Built Surveys
- Control Surveys
- Expert Witness
- GIS Mapping & Asset Management
- Unmanned Aerial Vehicle (UAV/Drone Surveys)
- Sanitary Sewer Extensions
- Park Master Plans
- Master Planning
- Planned Development & Rezoning
- Capital Improvements Surveys
- Feasibility Surveys
- MoDOT Cost Share Projects
- Transportation Enhancements
- Grant Application Assistance
- Local Public Agency (LPA) Projects
- Municipal Annexation Surveys
- Stormwater Master Plans
- Transportation Planning





Bicycle/Pedestrian Services

CJW has provided design and construction management services for a variety of bicycle and pedestrian improvements, including sidewalks, recreational trails, safe routes to school initiatives, bike/ped pavement markings, pedestrian signals (RFB & PHB), and bike lane facilities. Our team includes a recipient of the **Missouri Bicycle Federation's Distinguished Service to Missouri Bicycling Award**. **CJW** team members played crucial roles in the development and funding of greenway trails along Galloway Creek, South Creek, and Jordan Creek, which are among the most utilized facilities in the Ozark Greenway system. **CJW's** expertise in bike/ped projects spans residential, commercial, retail, healthcare, educational, tribal nations, and local public agencies. Our team has established long-term client relationships through trust, experience, and a client-focused approach.

CJW's safety and design professionals are dedicated to enhancing quality-of-life initiatives by improving safety and access to essential community facilities, such as educational, healthcare, governmental, employment, religious, and retail centers, for all transportation modes. We have experience developing Pedestrian Safety Action Plans, ADA Transition Plans, and Strategic Highway Safety Plans at the federal, state, and local public agency levels. **CJW's** technical expertise provides our local public agency clients with cost-effective, practical designs that incorporate proven safety measures to maximize safety benefits across all modes of transportation. **CJW's** team is **highly regarded** for its **professional expertise** and **commitment to client satisfaction**, successfully delivering a range of Bike/Ped Services, including:

PLANNING

- Transportation Planning
- ADA Transition Plans
- Comprehensive Master Plans
- Transportation Enhancements
- Traffic Studies & Analysis
- Pedestrian Safety Action Plans
- Recreational Trail Plans

SURVEYING

- Boundary & Topographic Surveys
- Utility Surveys
- Construction Staking
- Easement Description Preparation
- Global Positioning System Surveys
- Aerial Mapping Control Surveys
- GIS Maintenance & Development

INFRASTRUCTURE DESIGN

- Civil Site Design
- Streetscape Design
- MUTCD Signing & Markings
- Complete Streets Design
- Road Diets
- Recreational Trail Design
- ADA/Sidewalk Design
- ADA/Signalized Intersection Design
- Pedestrian Signals
- Speed Management

CONSTRUCTION

- Plan Review
- Estimate of Probable Cost
- Construction Observation
- Contract Administration





Construction Phased Services

CJW has provided Construction Phased Services for public and private projects across Southwest Missouri. We have collaborated with MoDOT, Local Public Agencies (LPAs), national brands, local developers, and tribal nations. Our project expertise encompasses residential, commercial, retail, healthcare, educational, and public agency sectors. We have built long-term client relationships by being trusted, experienced, and client-focused.

CJW's extensive expertise within the construction industry enables us to assist owners throughout the construction process. Leveraging our experience from all stages of construction, we partner with owners to provide Construction Administration and on-site representation. This oversight ensures that projects are completed according to plans and specifications, on time, and within budget. Our team has decades of project management leadership experience with MoDOT and LPAs, bringing a public agency's perspective to every project and acting as an extension of the agency's staff.

CJW's Construction Management Team is **highly regarded** for its **professional expertise** and **client-first commitment**. We deliver a variety of Construction Phased Services, including:

- Pre-Bid Meeting Assistance
- Estimate of Probable Costs
- Pre-Construction Meetings
- Progress Meetings
- Project Schedule Review & Monitoring
- Construction Environment Monitoring
- Review of Shop Drawings
- Review of Pay Applications
- Change Order Review & Completion Assistance
- Construction Staking
- Field Reports
- Interpret Plans/Specifications & Discuss Deviations
- Technical Assistance
- Quality Control
- Traffic Control Plan Review
- Utility Surveys - One Call
- Utility Coordination
- Construction Staking
- Onsite Representation
- Construction Observation
- Material Certification Review
- Punch List Preparation
- Project Closeout
- As Built Plan Preparation

