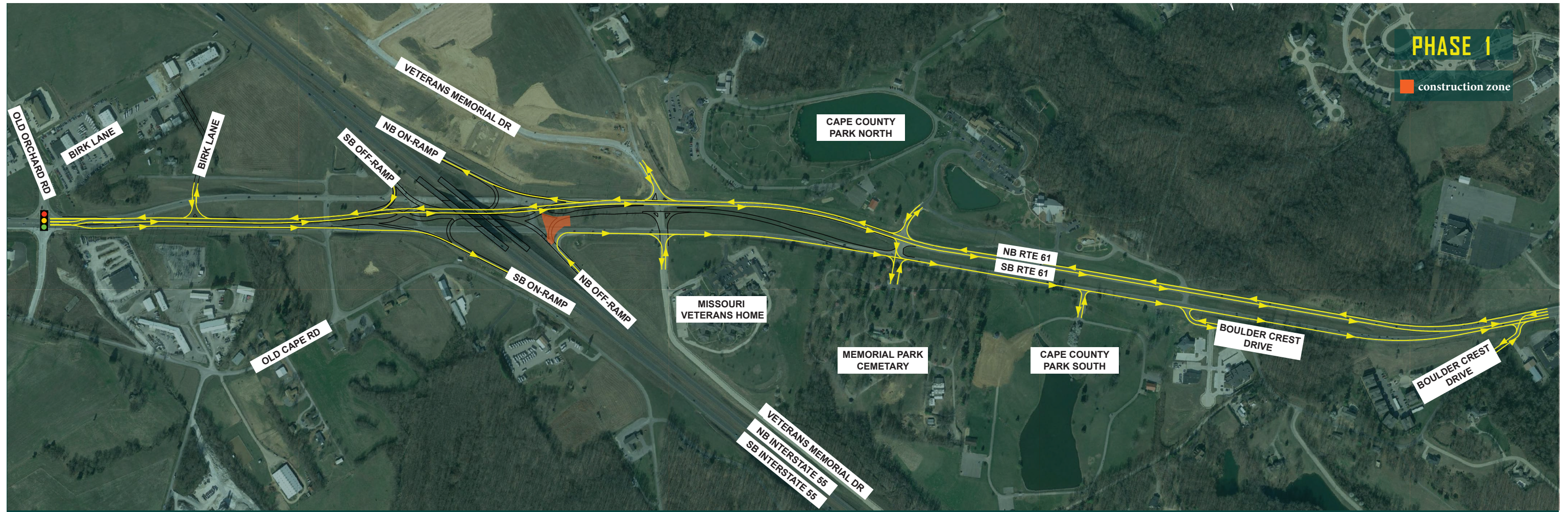


SEPTEMBER 2020 UPDATE: MULTI-PHASE TRAFFIC IMPACTS FOR CENTER JUNCTION DDI CONSTRUCTION



PLEASE NOTE: DURING ALL PHASES

Access between Old Orchard Road and Boulder Crest Drive will be right in, right out ONLY.

WHAT'S NEW?

Construction of the Center Junction DDI has been underway since February 2020, and the eastside of Interstate 55 will soon be in its final condition. To reach this project milestone, several traffic shifts will be necessary as MoDOT's contractor works to tie-in the new pavement to the existing. The three-phase approach will occur in succession over the course of approximately 6 weeks.

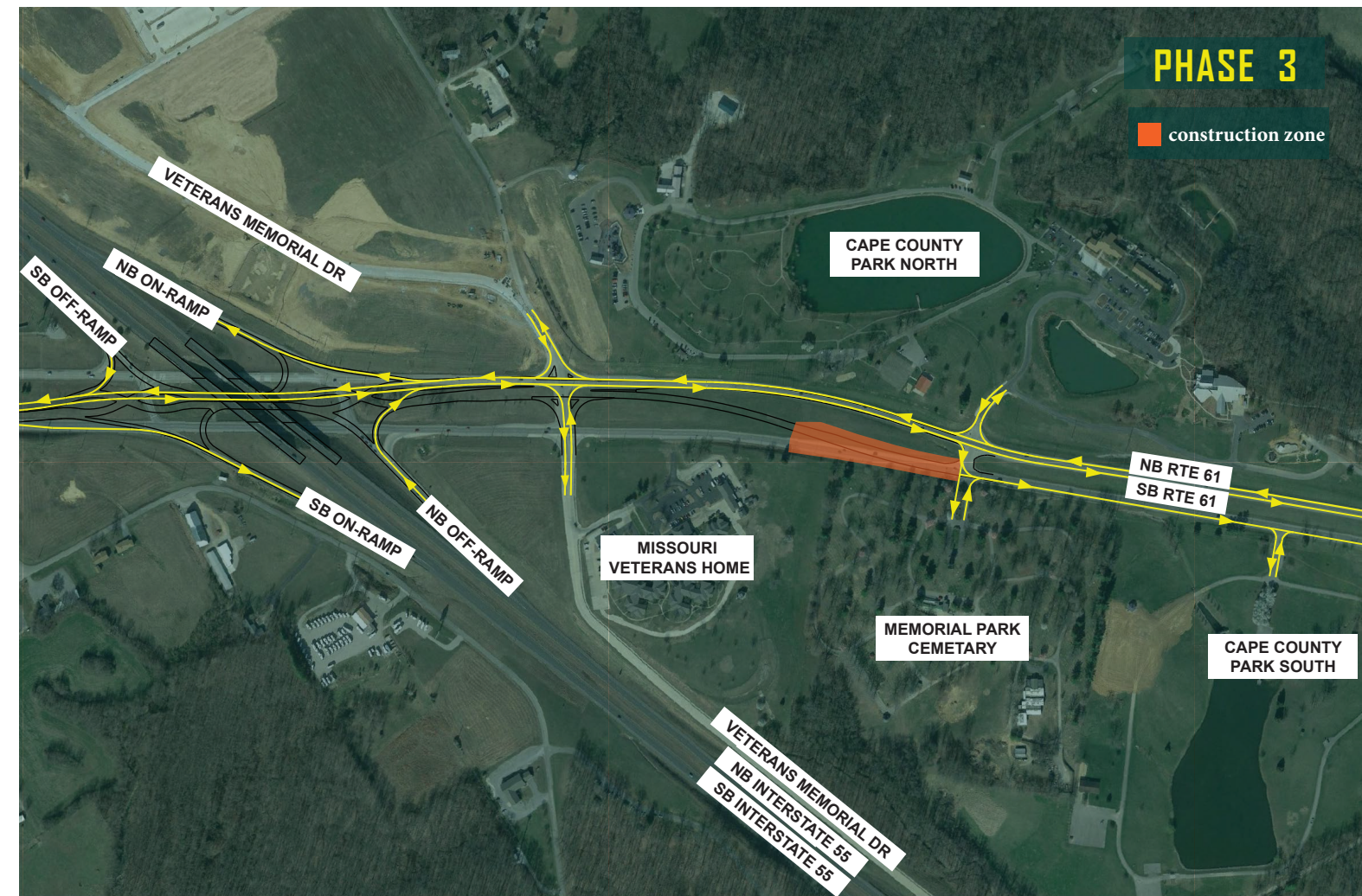
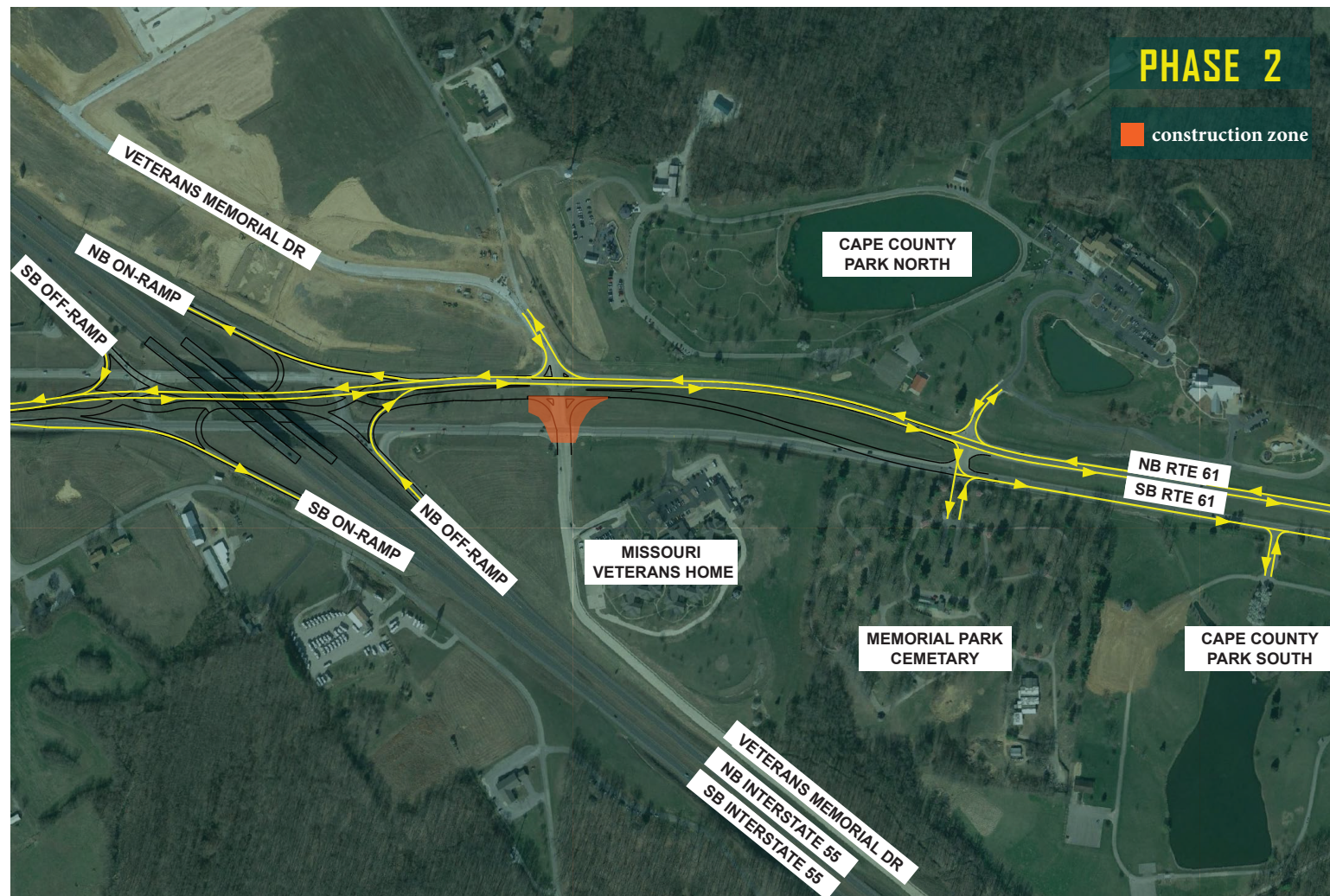
Phase 1 is anticipated to begin in early September.

PHASE 1

Move current head-to-head traffic from existing eastbound lanes to new pavement and existing westbound lanes. Access for the southbound I-55 on ramp and northbound I-55 off ramp will be maintained on the existing pavement. Northbound I-55 on ramp and southbound I-55 off ramp will be completed and open to traffic.



SEPTEMBER 2020 UPDATE: MULTI-PHASE TRAFFIC IMPACTS FOR CENTER JUNCTION DDI CONSTRUCTION



PLEASE NOTE: DURING ALL PHASES

Access between Old Orchard Road and Boulder Crest Drive will be right in, right out ONLY.

PHASE 2

Shift northbound I-55 off ramp traffic onto new pavement and close access to Veterans Memorial Drive south.

CONTACT US

For more information, please visit www.modot.org/center-junction-ddi or call 1-888-ASK MODOT (275-6636). Project updates are also available on [Facebook](#) and [Twitter](#). Find us at MoDOT Southeast.

PHASE 3

Reopen access to Veterans Memorial Drive. Traffic signals will be in operation at Veterans Memorial Drive following completion of phase 3.

