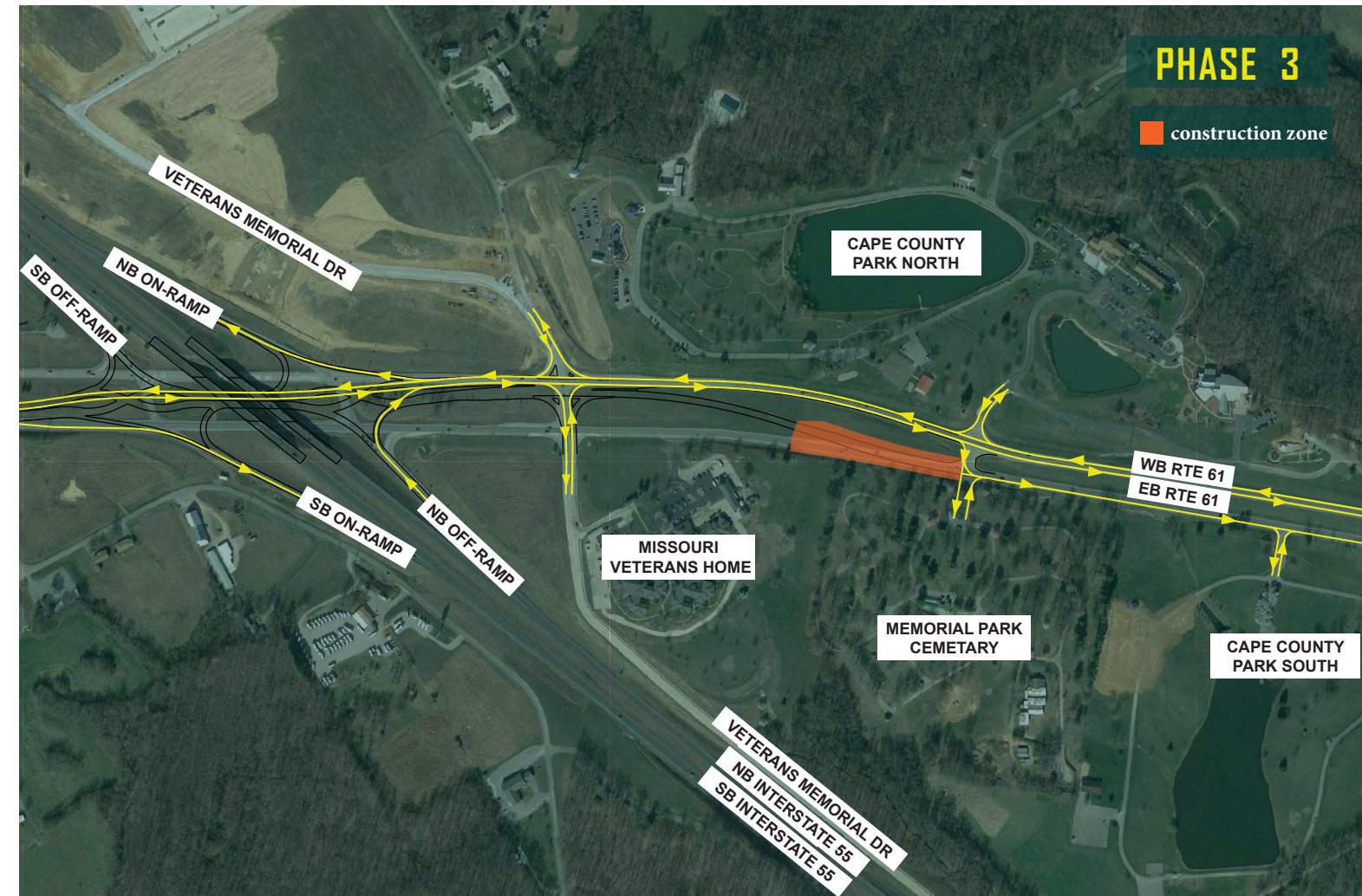
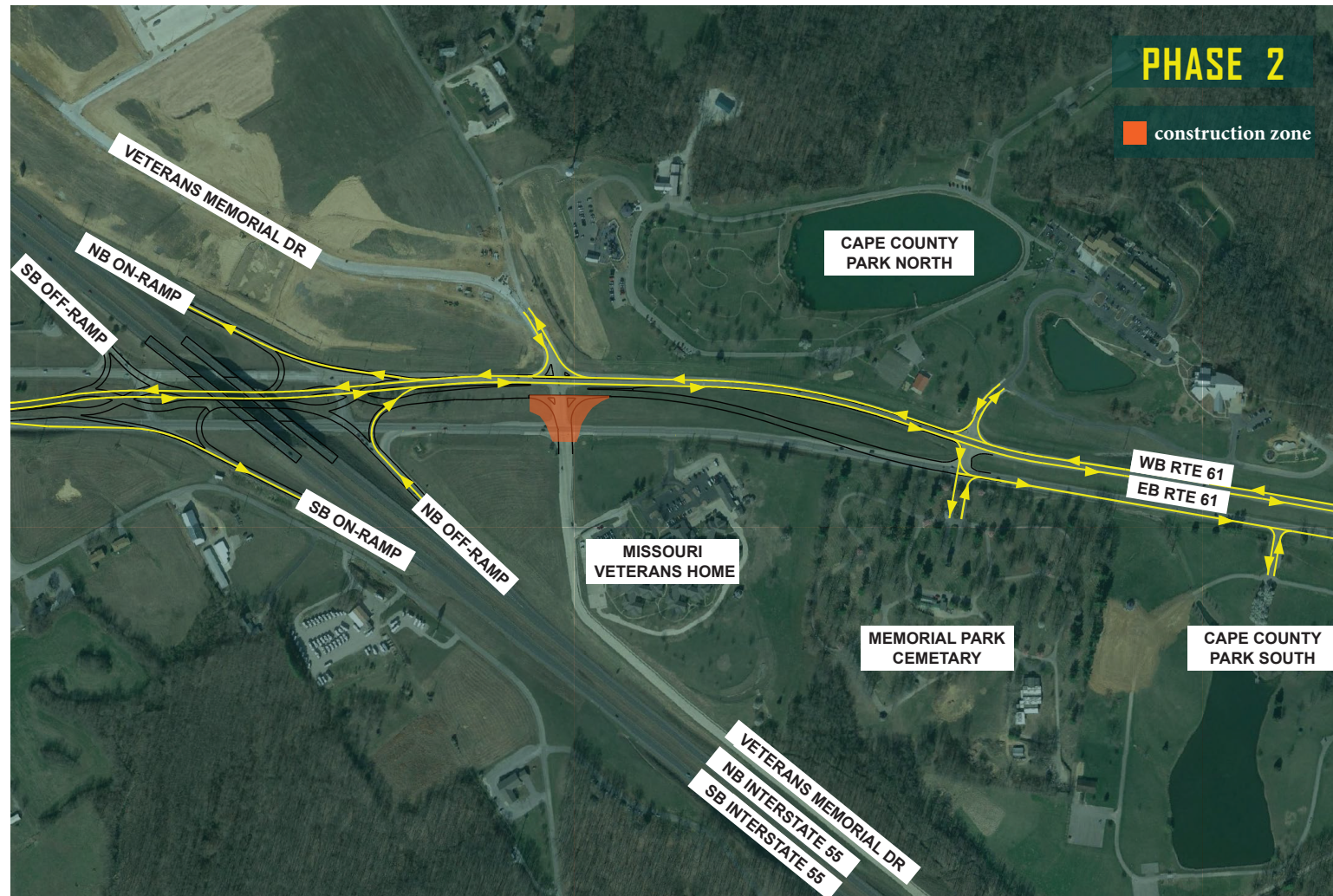




# SEPTEMBER 2020 UPDATE: MULTI-PHASE TRAFFIC IMPACTS FOR CENTER JUNCTION DDI CONSTRUCTION



PLEASE NOTE: DURING ALL PHASES

Access between Old Orchard Road and Boulder Crest Drive will be right in, right out ONLY.

## PHASE 2

Shift northbound I-55 off ramp traffic onto new pavement and close access to Veterans Memorial Drive south.

## PHASE 3

Reopen access to Veterans Memorial Drive. Traffic signals will be in operation at Veterans Memorial Drive following completion of phase 3.

## CONTACT US

For more information, please visit [www.modot.org/center-junction-ddi](http://www.modot.org/center-junction-ddi) or call 1-888-ASK MODOT (275-6636). Project updates are also available on [Facebook](#) and [Twitter](#). Find us at MoDOT Southeast.

