


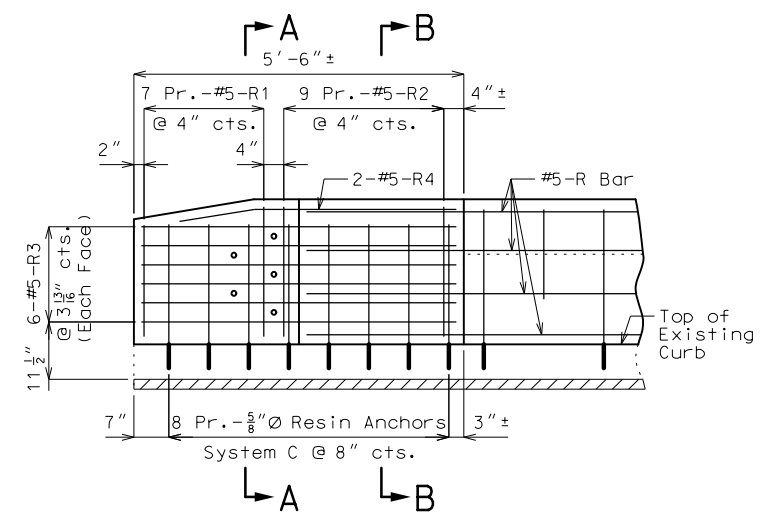
"THIS MEDIA SHOULD NOT BE CONSIDERED A CERTIFIED DOCUMENT."

DATE PREPARED
5/19/2020
ROUTE * STATE MO
DISTRICT BR SHEET NO. *
COUNTY *
JOB NO. *
CONTRACT ID. *
PROJECT NO.
BRIDGE NO.
CBO_02-01

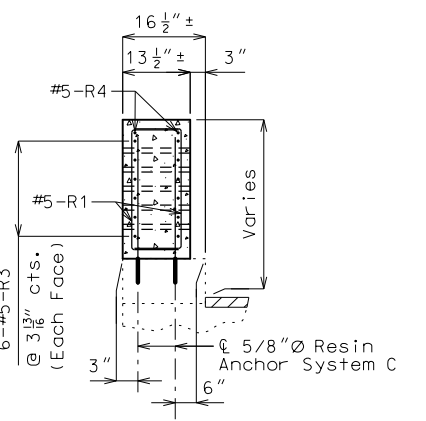
DESCRIPTION	DATE

MISSOURI HIGHWAYS AND TRANSPORTATION COMMISSION

 105 WEST CAPITOL
 JEFFERSON CITY, MO 65102
 1-888-ASK-MODOT (1-888-275-6636)

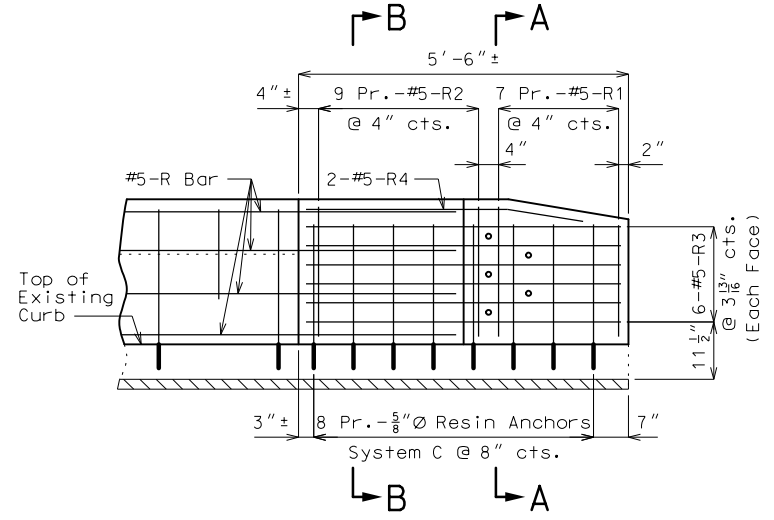
IF A SEAL IS PRESENT ON THIS SHEET IT HAS BEEN ELECTRONICALLY SEALED AND DATED.



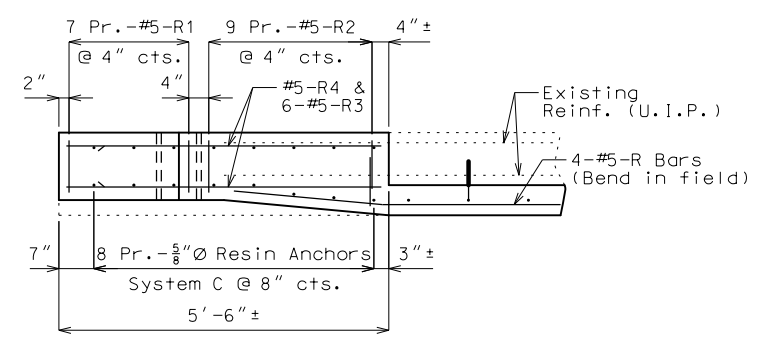
ELEVATION SHOWING REINFORCEMENT
(Right End Post at End Bent No. similar)



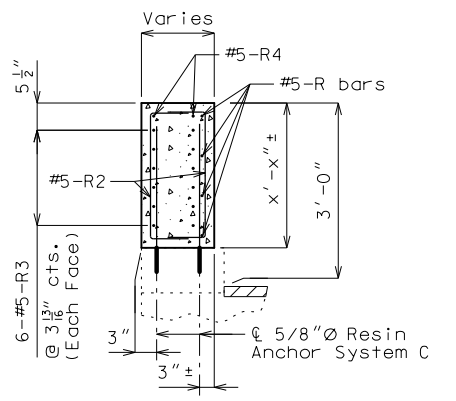
SECTION A-A



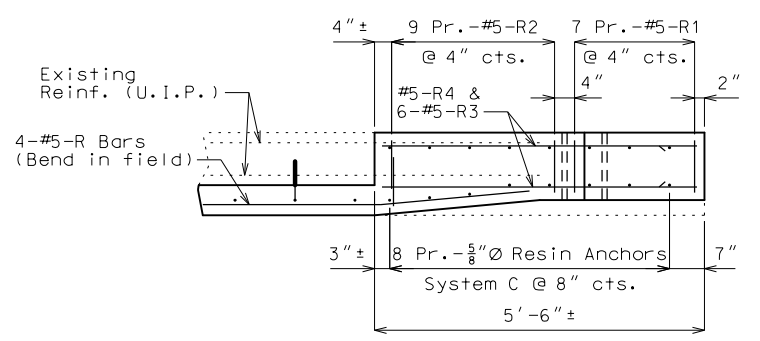
ELEVATION SHOWING REINFORCEMENT
(Right End Post at End Bent No. 1 similar)



PLAN SHOWING REINFORCEMENT
LEFT END POST AT END BENT NO. 1



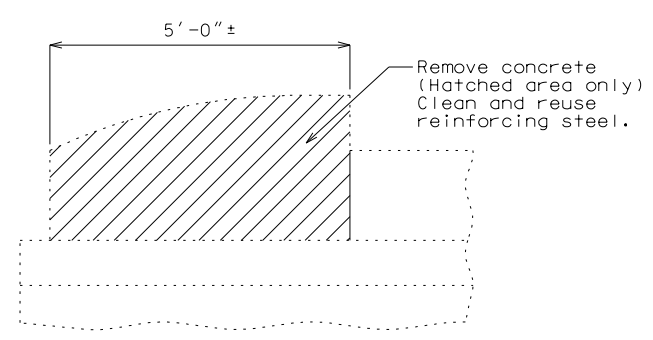
SECTION B-B



PLAN SHOWING REINFORCEMENT
LEFT END POST AT END BENT NO.

3'-0" Curb Blockout

These details are meant to be used as a starting point only. Modify as needed.

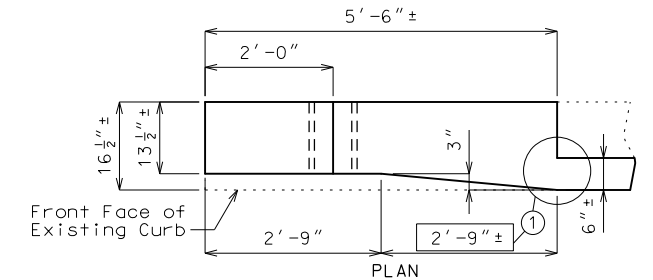


PART ELEVATION SHOWING END POST CONCRETE REMOVAL

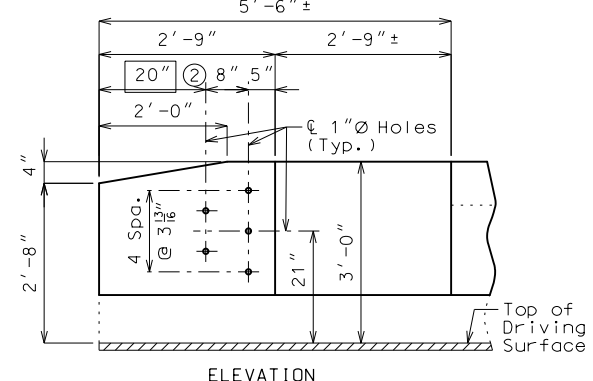
Cost of removing existing end posts will be considered completely covered by the contract unit price for Curb Blockout.

- ① Taper front face as gradually as possible, while maintaining 6" minimum thickness of blockout at the end of the existing parapet. 2'-9" maximum taper length.
 - ② Holes may be shifted 12" closer to the end (8" instead of 20") to avoid attaching a rail post to the top of backwall. All other dimensions and reinforcement remain the same.
- Longitudinal R bars shall extend 2'-7" minimum into new end post.

Notes:
 Work this sheet with Sheet No. .
 For details of resin anchors, see Sheet No. .
 Resin anchors shall be shifted or bent in field to clear one-inch diameter holes by at least 1/2 inch.



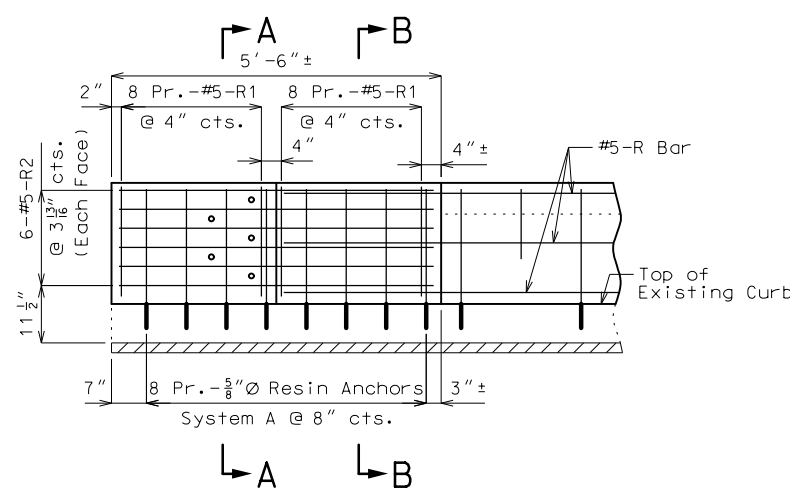
PLAN



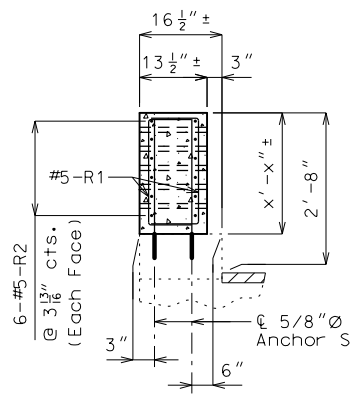
ELEVATION

DETAILS OF END POST AND GUARD RAIL ATTACHMENT

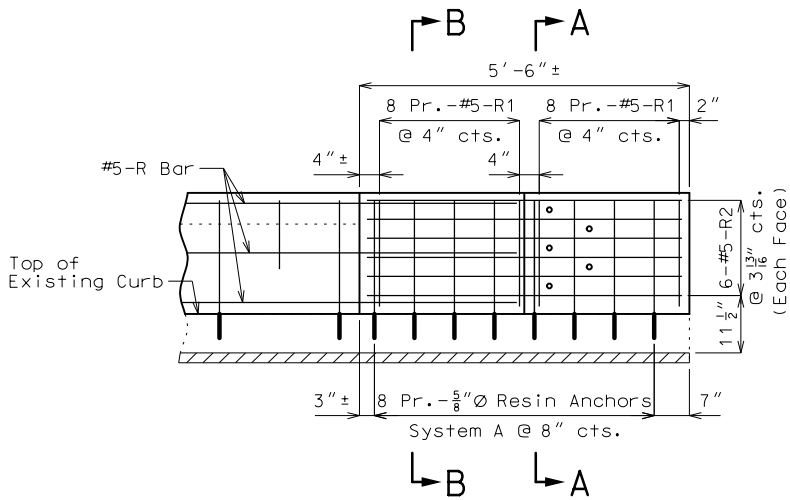
CURB BLOCKOUT AT END BENTS



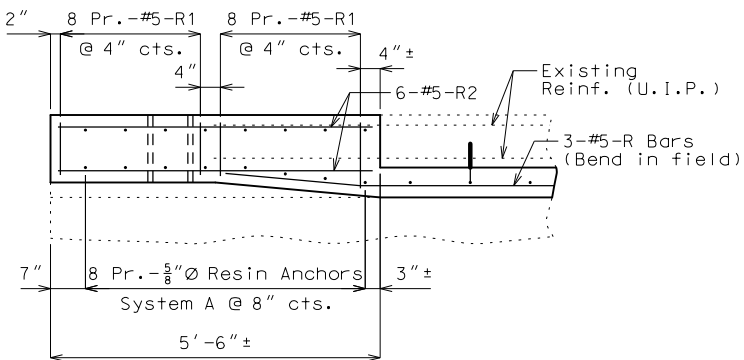
ELEVATION SHOWING REINFORCEMENT
(Right End Post at End Bent No. similar)



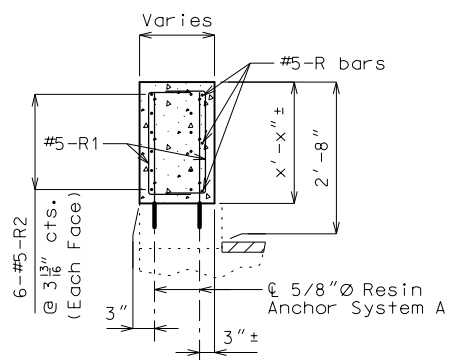
SECTION A-A



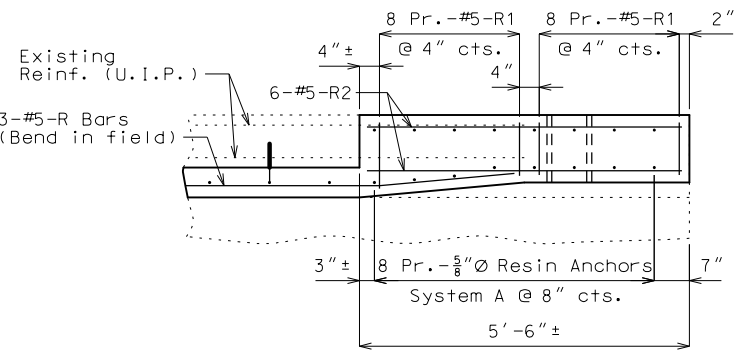
ELEVATION SHOWING REINFORCEMENT
(Right End Post at End Bent No. 1 similar)



PLAN SHOWING REINFORCEMENT
LEFT END POST AT END BENT NO. 1



SECTION B-B



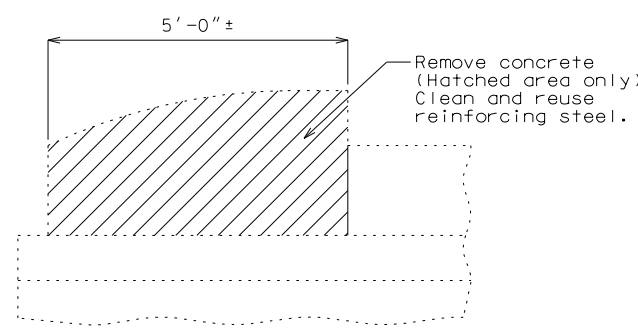
PLAN SHOWING REINFORCEMENT
LEFT END POST AT END BENT NO. 1

2'-8" Curb Blockout

These details are meant to be used as a starting point only. Modify as needed.

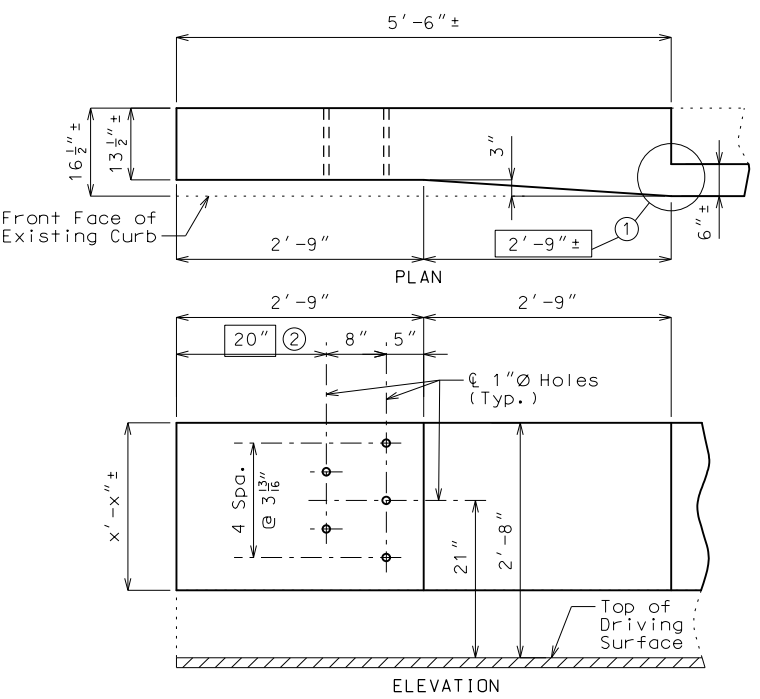
- ① Taper front face as gradually as possible, while maintaining 6" minimum thickness of blockout at the end of the existing parapet. 2'-9" maximum taper length.
 - ② Holes may be shifted 12" closer to the end (8" instead of 20") to avoid attaching a rail post to the top of backwall. All other dimensions and reinforcement remain the same.
- Longitudinal R bars shall extend 2'-7" minimum into new end post.

Notes:
Work this sheet with Sheet No. . .
For details of resin anchors, see Sheet No. . .
Resin anchors shall be shifted or bent in field to clear one-inch diameter holes by at least 1/2 inch.



PART ELEVATION SHOWING END POST CONCRETE REMOVAL

Cost of removing existing end posts will be considered completely covered by the contract unit price for Curb Blockout.



ELEVATION
DETAILS OF END POST AND GUARD RAIL ATTACHMENT

"THIS MEDIA SHOULD NOT BE CONSIDERED A CERTIFIED DOCUMENT."

DATE PREPARED 5/19/2020	
ROUTE *	STATE MO
DISTRICT BR	SHEET NO. *
COUNTY *	
JOB NO. *	
CONTRACT ID.	
PROJECT NO.	
BRIDGE NO. CBO_02-2	

DESCRIPTION	DATE

MISSOURI HIGHWAYS AND TRANSPORTATION COMMISSION

105 WEST CAPITOL
JEFFERSON CITY, MO 65102
1-888-ASK-MODOT (1-888-275-6636)

CURB BLOCKOUT AT END BENTS