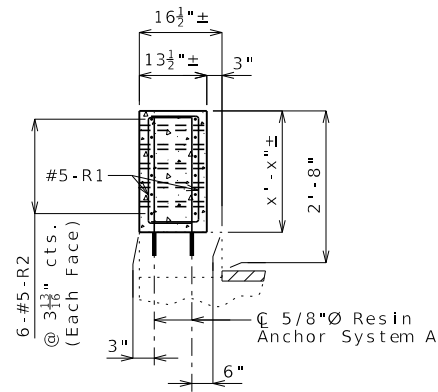
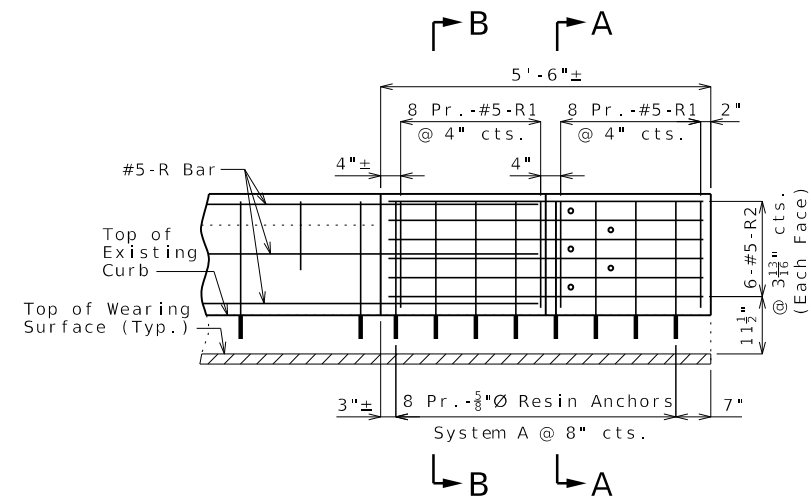


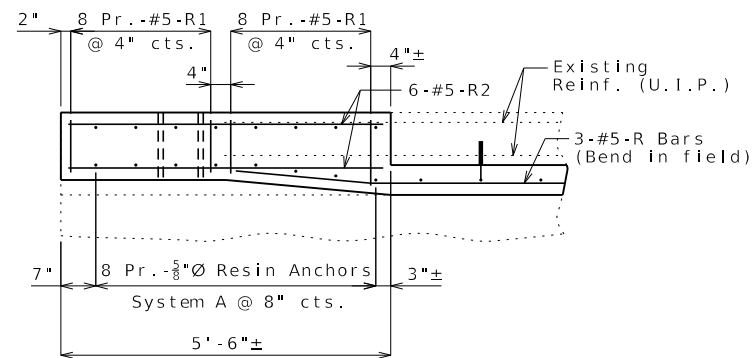
ELEVATION SHOWING REINFORCEMENT  
(Right End Post at End Bent No. similar)



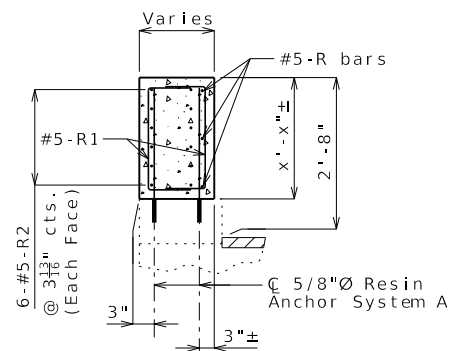
SECTION A-A



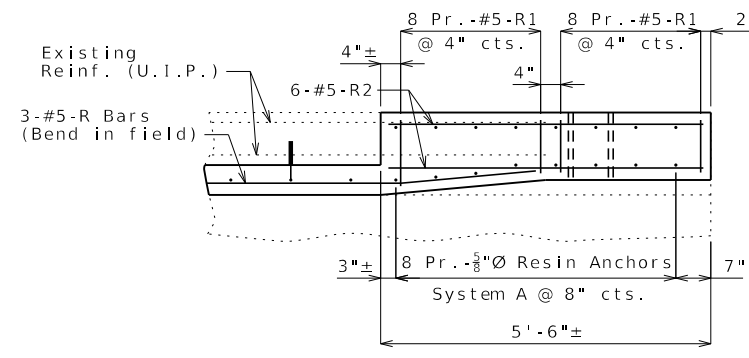
ELEVATION SHOWING REINFORCEMENT  
(Right End Post at End Bent No. 1 similar)



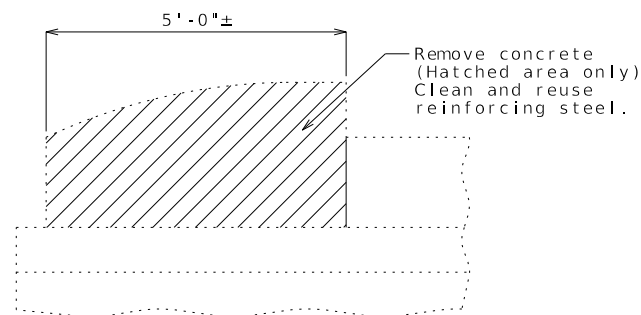
PLAN SHOWING REINFORCEMENT  
LEFT END POST AT END BENT NO. 1



SECTION B-B



PLAN SHOWING REINFORCEMENT  
LEFT END POST AT END BENT NO.



PART ELEVATION SHOWING END POST  
CONCRETE REMOVAL

Cost of removing existing end posts will be considered completely covered by the contract unit price for Curb Blockout.

## 2'-8" Curb Blockout

These details are meant to be used as a starting point only. Modify as needed.

① Taper front face as gradually as possible, while maintaining 6" minimum thickness of blockout at the end of the existing parapet. 2'-9" maximum taper length.

② Holes may be shifted 12" closer to the end (8" instead of 20") to avoid attaching a rail post to the top of backwall. All other dimensions and reinforcement remain the same.

Longitudinal R bars shall extend 2'-7" minimum into new end post.

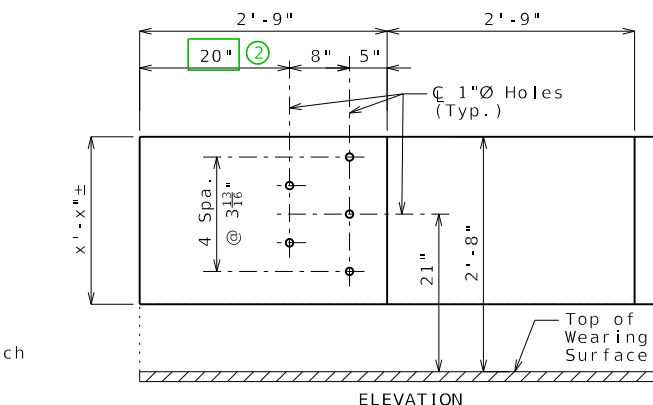
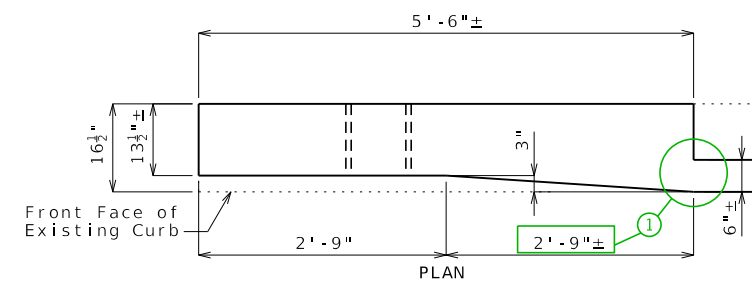
Detach unused border reference file before PDF request.

Notes:

Work this sheet with Sheet No. .

For details of resin anchors, see Sheet No. .

Resin anchors shall be shifted or bent in field to clear one-inch diameter holes by at least 1/2 inch.



ELEVATION  
DETAILS OF END POST AND  
GUARD RAIL ATTACHMENT

## CURB BLOCKOUT AT END BENTS

Detailed  
Checked

Note: This drawing is not to scale. Follow dimensions.

Sheet No. of

DATE PREPARED 12/13/2022	
ROUTE	STATE MO
DISTRICT BR	SHEET NO. 3
COUNTY	
JOB NO.	
CONTRACT ID.	
PROJECT NO.	
BRIDGE NO.	

DESCRIPTION	DATE

MISSOURI HIGHWAYS AND TRANSPORTATION  
COMMISSION

105 WEST CAPITOL  
JEFFERSON CITY, MO 65102  
1-888-ASK-MODOT (1-888-275-6636)

IF A SEAL IS PRESENT ON THIS SHEET IT HAS BEEN ELECTRONICALLY SEALED AND DATED.