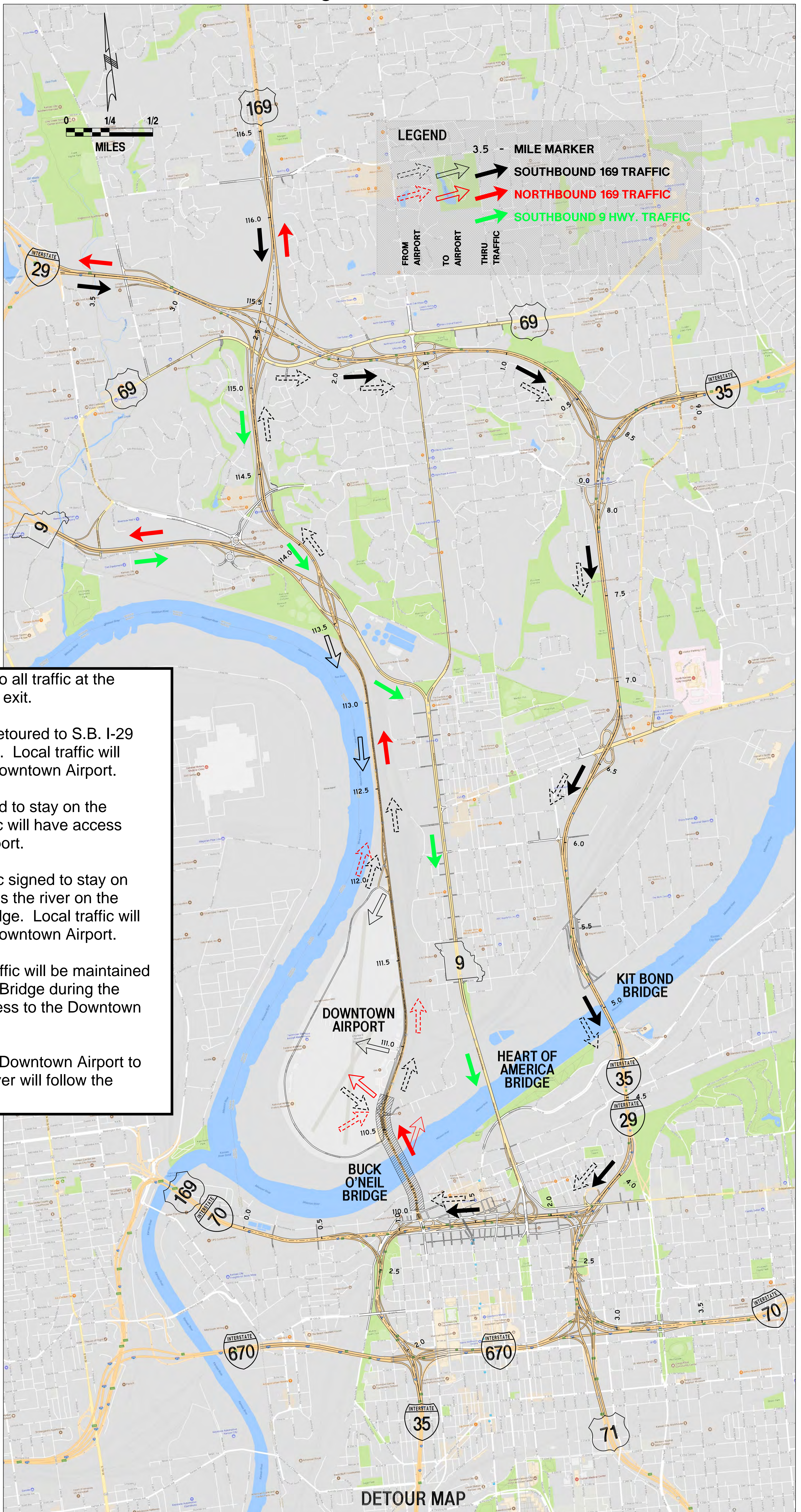
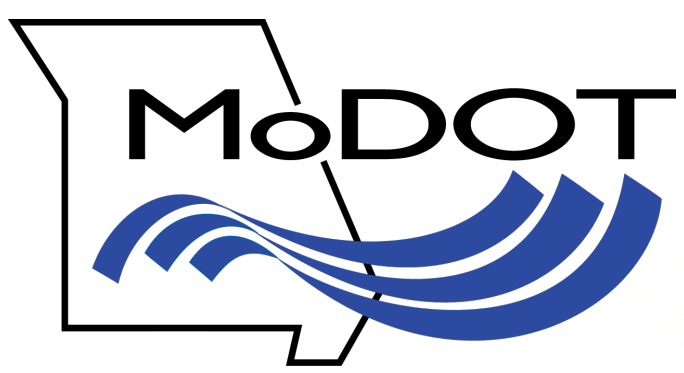


Buck O'Neil Bridge Detour Routes



- S.B. US-169 closed to all traffic at the south Richards Road exit.
- S.B. US-169 traffic detoured to S.B. I-29 over the Bond Bridge. Local traffic will have access to the Downtown Airport.
- S.B. I-29 traffic signed to stay on the highway. Local traffic will have access to the Downtown Airport.
- S.B. 9-Highway traffic signed to stay on the highway and cross the river on the Heart of America Bridge. Local traffic will have access to the Downtown Airport.
- Two lanes of N.B. traffic will be maintained over the Buck O'Neil Bridge during the project including access to the Downtown Airport.
- Connection from the Downtown Airport to points south of the river will follow the detour to S.B. I-29.



DETOUR MAP