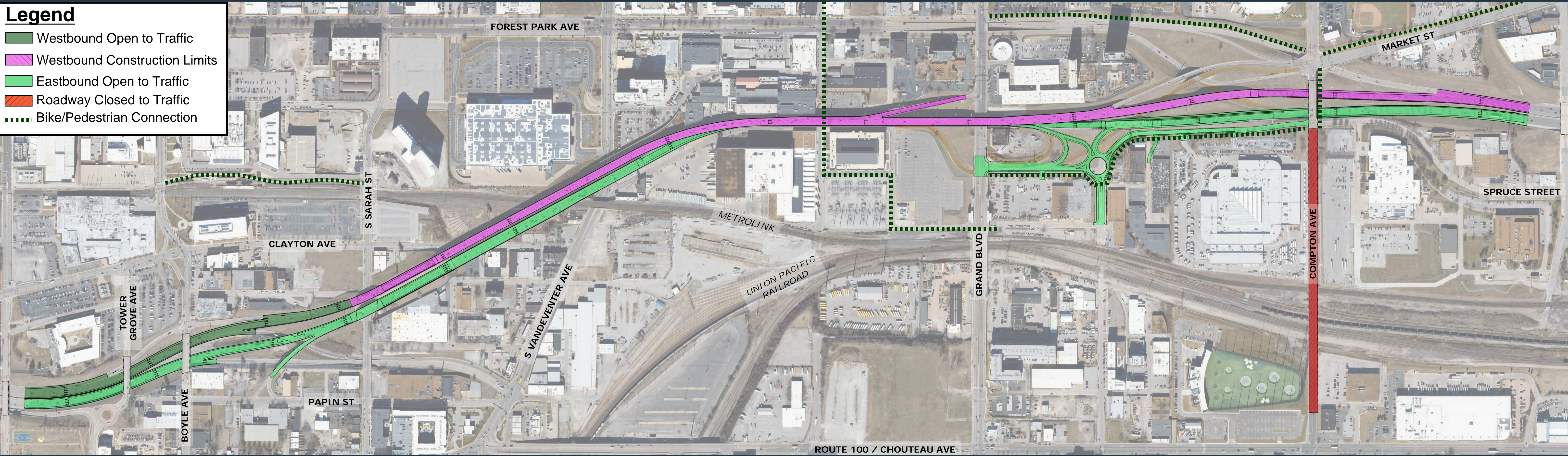
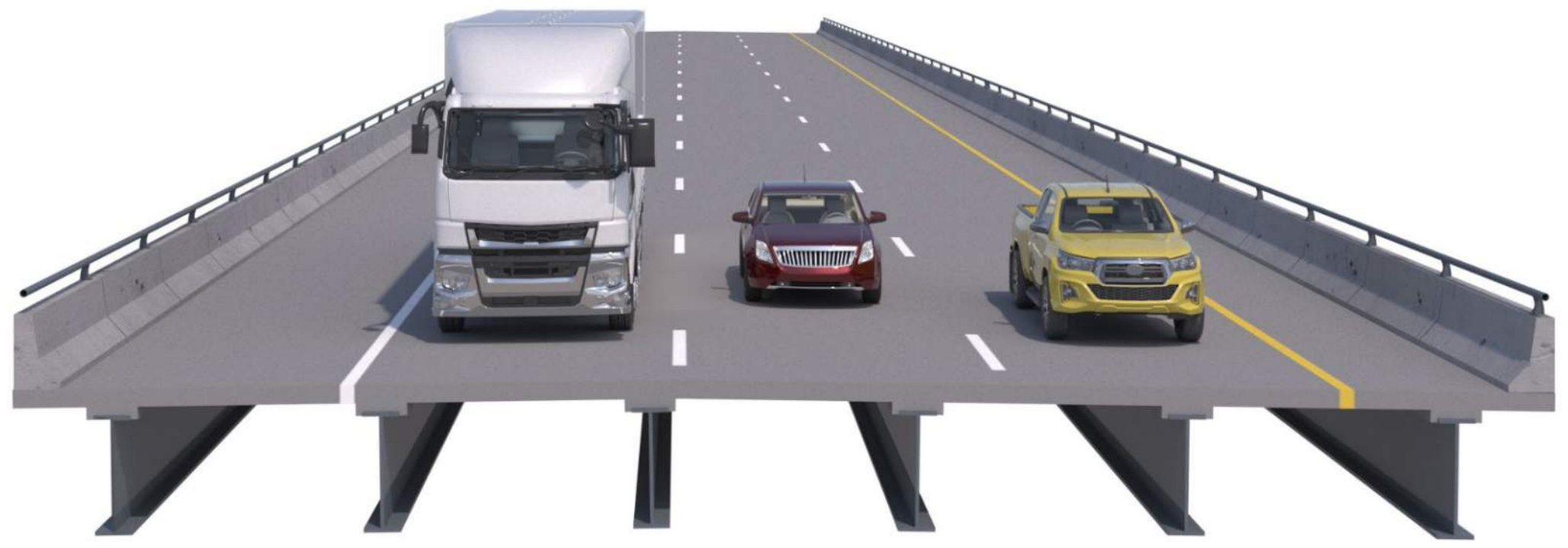


Legend

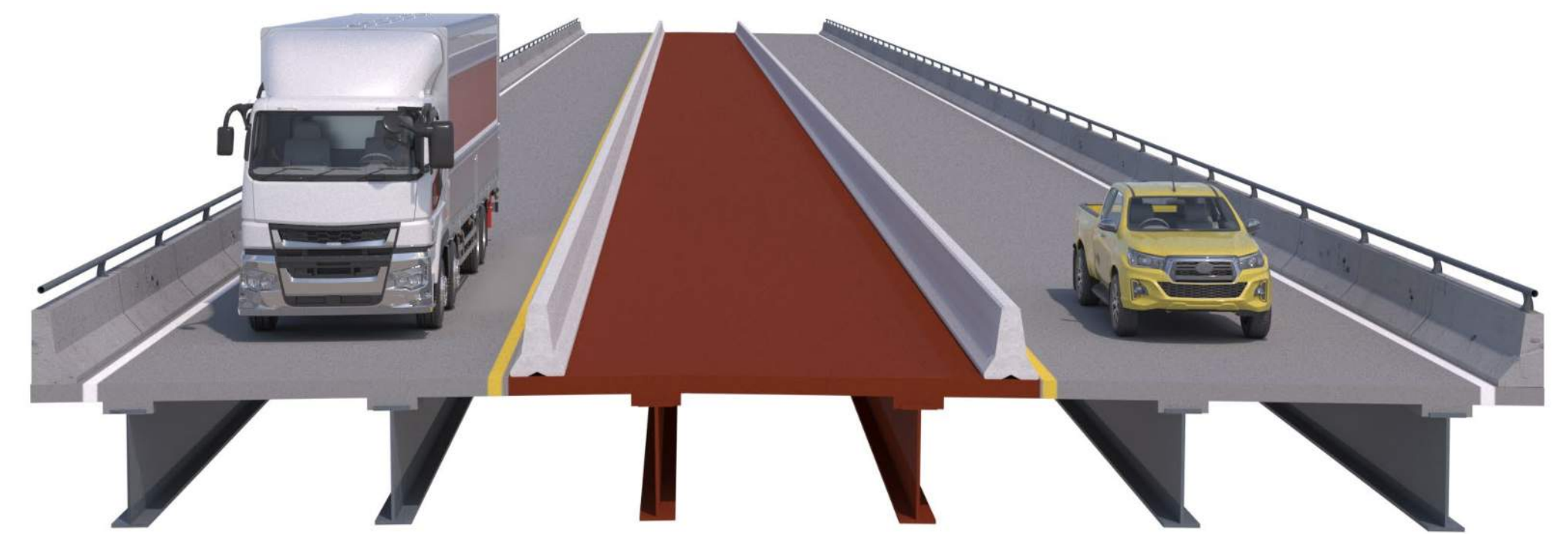
- Westbound Open to Traffic
- Westbound Construction Limits
- Eastbound Open to Traffic
- Roadway Closed to Traffic
- Bike/Pedestrian Connection



Work requiring lane reductions on WB I-64 will not start until after EB I-64 is reopened



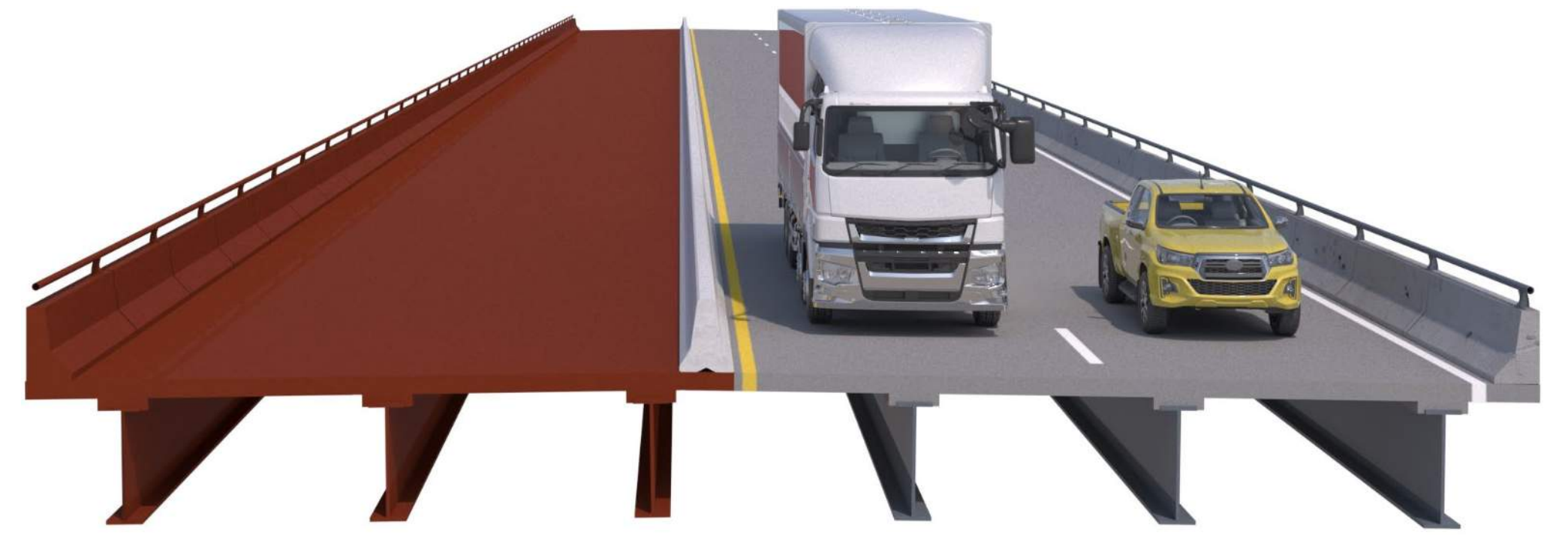
Westbound Existing Condition



Westbound Stage 2



Westbound Stage 1



Westbound Stage 3