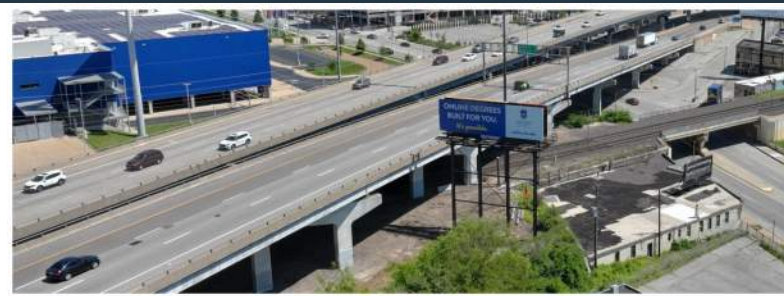


## Existing Conditions

### PROJECT FACTS

- Replace 1 Bridge (87,633 Total Square Feet)
- Rehabilitate 8 Bridges (341,432 Total Square Feet)
- Remove 3 Bridges (20,768 Total Square Feet)
- 3 New Bike/Pedestrian Connections Through Midtown

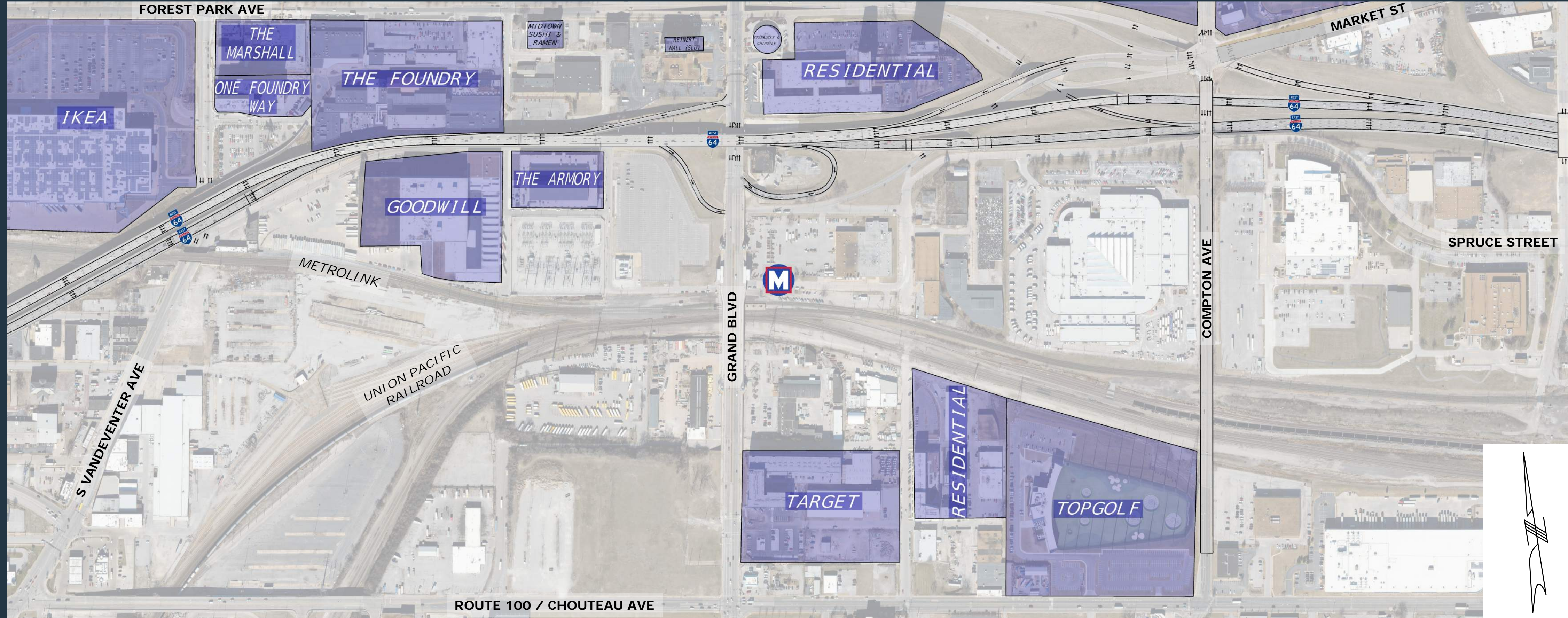


### CONSTRUCTION

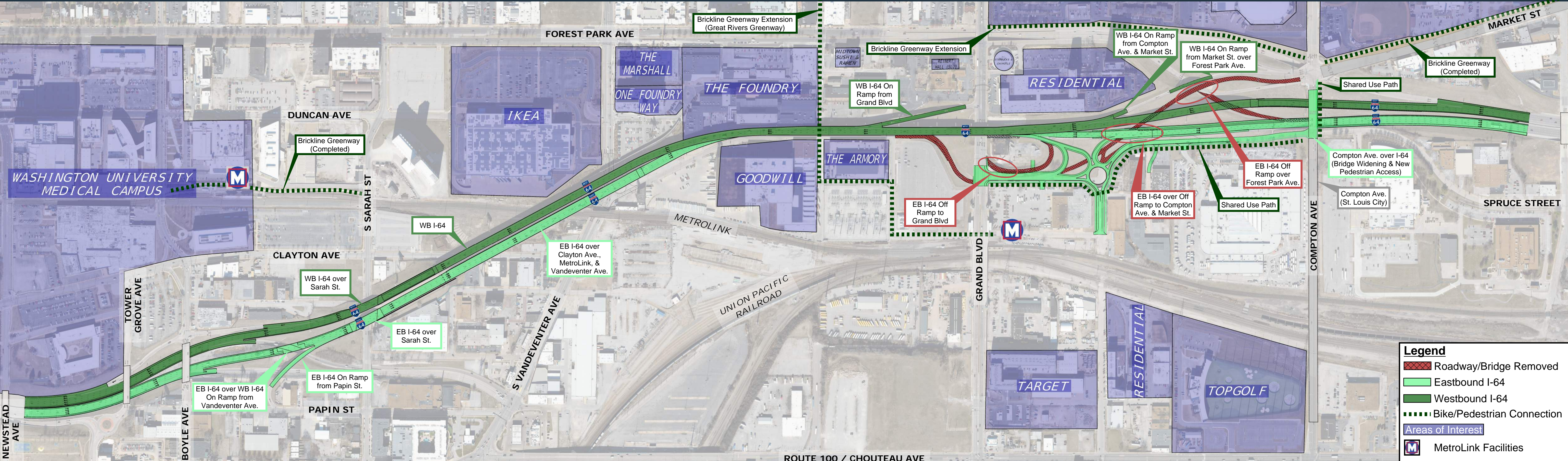
- EB I-64 anticipated for closure for 1 year pending award.
- Overall Construction Duration: 24 – 36 Months.
- Regional & Local detours provided.
- Time savings by closing interstate - Construction to take 4 years with daily lane closures if interstate remained open.
- WB I-64 to be closed on select weekends during EB I-64 closure for expansion joint replacement.
- WB I-64 drainage system to be repaired.

### BRIDGE FACTS

Bridge Name	Year Built	Bridge Area (SF)	Lanes	Type of Work
EB I-64 Off Ramp to Market over Forest Park Ave.	1981	6,632	1	Bridge Removal
EB I-64 over Market St.	1963	11,816	3	
EB I-64 Off Ramp to Grand Blvd.	1960	2,320	1	
EB I-64 over Clayton Ave., MetroLink, & Vandeventer Ave.	1956	87,633	3	Bridge Replacement
EB I-64 over Clayton Ave., MetroLink, & Vandeventer Ave.	2029	83,174	3	
EB I-64 On Ramp from Papin St.	1977	7,352	1	Bridge Rehabilitation
EB I-64 over WB I-64 On Ramp from Vandeventer Ave.	1956	4,332	1	
WB I-64 over Sarah St.	1981	8,609	3	
EB I-64 over Sarah St.	1982	9,325	3	
WB I-64	1982	296,265	3	
WB I-64 On Ramp from Grand Blvd	1982	8,591	1	
WB I-64 On Ramp from Compton Ave. & Market St.	1981	2,564	1	
WB I-64 On Ramp from Market St. over Forest Park Ave.	1981	4,394	1	



## Ultimate Conditions



**Legend**

- Roadway/Bridge Removed
- Eastbound I-64
- Westbound I-64
- Bike/Pedestrian Connection
- Areas of Interest
- MetroLink Facilities