



**Missouri's
Local
Program**
*for community
development*

COVER SHEET

(This must accompany your firm's letter of interest and does not count in the page limit)

Firm's Full Legal
Name:

_____ Bartlett & West, Inc. _____

Firm Contact Name:

_____ Don Wichern, PE _____

Contact Email
Address:

_____ don.wichern@bartwest.com _____

Firm's Mailing Address:

_____ 601 Monroe Street, Suite 201
Jefferson City, MO 65101 _____

Work Category:

- Roadway Design
- Trails & Sidewalks
- Construction Inspection
- Traffic Engineering & TEAP
- Structures
- Environmental
- Historic Preservation
- Multimodal Planning / Systems and Facilities Design
- Transportation Planning – **NEW CATEGORY**

Bartlett & West is excited at the opportunity of providing on-call professional services in the Construction Inspection category for Missouri's Local Program for Local Public Agencies (LPA's). Bartlett & West is a well-established, multi-disciplined engineering firm with extensive capabilities in transportation design and construction. Our experience is built upon the many years we have worked with numerous municipalities and counties across the state providing professional and reliable services in support of local transportation needs.

At Bartlett & West, we recognize and understand the multiple responsibilities associated with inspection and oversight of an active construction project. We know these efforts are critical to maintaining LPA program compliance and ensuring overall project needs are met. Our staff knowledge and experience in construction engineering and inspection as well as contract administration enable us to provide the support needed to deliver successful transportation projects to our local partners. Bartlett & West staff are also certified to meet on-site materials testing requirements. Our multiple capabilities and qualifications combined with our proven reliability make our firm the right choice for LPA on-call construction inspection services.

FULL-SERVICE FIRM

As a multi-disciplined engineering firm, Bartlett & West offers a wide-range of transportation services including construction engineering and on-site construction and materials inspection. Our Bartlett & West offices located in Missouri, Illinois, Kansas, Texas, North and South Dakota have been providing reliable services to cities, counties and state departments of transportation (DOT's) for seventy-five years. From construction engineers and field technicians to surveyors, designers, engineers, and project managers, our staff is well-rounded and brings a diverse array of knowledge and experience in support of LPA transportation projects and local on-call needs.

ACCESSIBILITY

Our multiple locations in Missouri, including offices in St. Louis, Jefferson City, Rolla, and Springfield as



Bartlett & West provided complete construction phase services for the N Summit Drive improvement project in the City of Holts Summit.

well as Overland Park, Kansas and Jerseyville, Illinois position us to efficiently respond to on-call project needs in both urban and rural settings. Whether an ADA-compliant pedestrian improvement project for the City of Moberly or a bridge replacement project for rural Osage County, Bartlett & West remains accessible and responsive to local partner needs throughout Missouri.

PAST PERFORMANCE AND RELIABILITY

For years, Bartlett & West has been delivering professional, transportation engineering services, including construction phase, for not only LPA's across Missouri but also for the Missouri Department of Transportation (MoDOT). From Superpave resurfacing on I-29 in Platte County and signal-safety improvements on Route's 21 and B in Jefferson County to pedestrian facility and drainage improvements on local routes in cities such as Ava, Russellville, Holts Summit, Moberly, and Rosebud, Bartlett & West has provided construction engineering and inspection services to multiple clients across Missouri. Whether at the State or local level, our engineers and inspection staff have demonstrated their flexibility and reliability to carry out construction phase services at any level throughout Missouri. As a result, we are recognized by our clients as an efficient, knowledgeable, and professional firm that can be depended upon to produce quality results.



Example of Bartlett & West Humboldt Type B air meter, slump cone, and cylinder molds for concrete materials testing and sampling.

FAMILIARITY AND CAPABILITY

Bartlett & West's extensive knowledge, capability, and experience delivering construction phase services on transportation projects gives our LPA clients the comfort and confidence their projects are in qualified hands. Areas of construction-related services we provide include contract administration and project documentation, surveying and staking, field inspection and oversight, materials sampling and testing, and final project close-out documentation. Bartlett & West staff are extremely familiar with LPA program requirements. During the project, staff work to ensure all project documentation and administrative efforts comply and on-site work meets expectations so that neither project outcomes nor funding is compromised. Our staff take great care in monitoring both project construction costs and budgets so that the best interest of our local partner and their project is represented.

Our inspection capabilities at Bartlett & West cover multiple facets of transportation-related improvements including pavement construction and resurfacing, ADA sidewalk and facilities, stormwater and drainage, bridge structures, box culverts, retaining walls, signals, lighting, signing, and many others. In addition, staff are familiar with inspecting local utility improvements such as for water and sanitary sewer, which may often accompany local transportation projects.

Bartlett & West staff are also very familiar with MoDOT Standard Specifications and Standard Plans for project conformance, which LPA's routinely reference for project specification requirements.

TECHNICIAN CERTIFICATION

Field staff at Bartlett & West are certified in multiple areas per MoDOT's Technician Certification Program. Certifications include Concrete Field, Concrete Strength, Aggregate Technician, Bituminous Technician, Soil Density, and Superpave QC/QA. All field staff are OSHA-10 certified. We are also equipped and offer staff that are Federal Aviation Administration (FAA) Remote Pilot licensed for drone operation. This service is available to enhance construction inspection operations and provide comprehensive aerial documentation if needed.

PROJECT TEAM

Patty Lemongelli, PE, will serve as the lead construction manager for LPA on-call services in construction inspection. With over 28 years of MoDOT experience, including 11 years as the District Construction & Materials Engineer in Central District, and more recently, over six years as a construction specialist for Bartlett & West, she brings a solid background in construction and materials operations, inspection, and construction engineering.

Also serving on our on-call team will be **Don Wichern, PE**, with over 34 years with MoDOT, including time as District Engineer for the Northwest District and Assistant District Engineer in the St. Louis District, as well as, in lead roles in construction in the St. Louis and Kansas City Districts. Don's transportation leadership, construction experience, and partnering mentality will serve as a valuable resource as we carry out LPA on-call services.

In addition, **Austin Johnson, PE**, **Dillon Feeley, PE**, **Neil Brady, PE**, and **Scott Komarek, PE**, will serve as project managers for LPA on-call services for construction inspection. Each brings a depth of transportation engineering and experience to the team, including project management, roadway and bridge design, ADA facility design, and public involvement that will support and facilitate LPA construction phase operations and ultimately the successful delivery of LPA projects per client needs.

Lastly, and vital to our on-call services delivery, is our on-site inspection and materials testing team, which includes a qualified mix of engineers and technicians available and positioned across the state to successfully cover LPA on-call construction project needs.



RELEVANT PROJECTS

Sidewalk Connectivity Project — City of Russellville

This project funded by the Transportation Alternatives Program (TAP) provided ADA compliant sidewalk and paved approaches along Simpson Street and Railroad Avenue in Russellville as well as stormwater drainage improvements. Construction inspection services

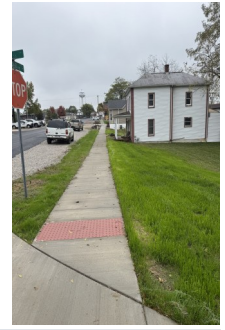
Contact

Jan Wyatt

City Clerk

573.782.3511

involved contract administration, inspection and materials testing, submittals review, daily and pay diaries, pay requests, change orders, wage rate interviews, payroll compliance checks, and final close-out documentation. All administration and oversight was in accordance with LPA Manual requirements.



East Holt Street Improvements — City of Mexico

Through an FHWA Technology and Innovation Deployment Program (TIDP) grant, the City of Mexico was able to reconstruct 1500 ft of E. Holt Street with compacted concrete pavement. Other improvements included curb and gutter, drainage, sidewalk, paved approaches, and side street

connections. Bartlett & West provided grant assistance, full survey, easement

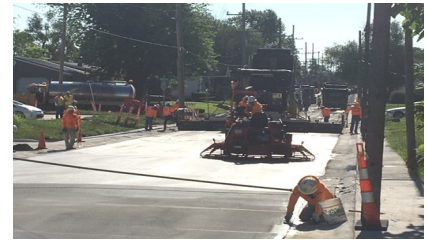
Contact

Drew Williford

Public Works Director

573.581.2100

acquisition, design, all construction contract administration, on-site inspection and materials testing, submittals review, daily and pay diaries, all pay application and change order administration. All was in accordance with LPA Manual requirements.



County Road 531 Bridge Replacement — Osage County

This BRO funded project to replace an aging bridge involved construction of a 100 ft, two-span concrete girder bridge over an existing stream in Osage County. To provide access during construction, a temporary bypass

was constructed and maintained during the roadway closure. Bartlett & West services included full survey, design, utility coordination, construction

Contact

Larry Kliethermes

County Commissioner

573.897.2139

contract administration, inspection and materials testing, shop drawing and submittals review, daily and pay diaries, pay requests, change orders, and final close-out documentation per LPA Manual requirements.



Business Highway 63/Morley Street — City of Moberly

Bartlett & West provided design and full construction phase services on this Federal-aid, ADA improvement project delivering over 2 miles of ADA compliant sidewalk and paved approach as well as pedestrian signal improvements on Morley Street and Highway 24 in the City of Moberly. Services included on-site inspection and materials testing, daily

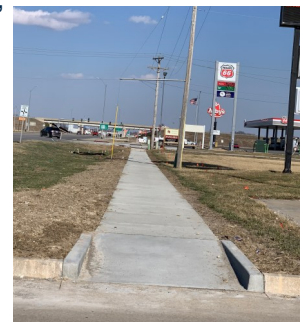
Contact

Tom Sanders

Director of Public Works

660.269.8705

and pay diaries, submittal reviews, wage rate interviews, payroll compliance checks, pay estimate and change order administration, and final project closeout documentation. All administration and oversight was in accordance with LPA Manual requirements.



South Summit Drive Improvements — City of Holts Summit

This 3,300 linear ft project funded by the Transportation Alternatives Program (TAP) provided ADA compliant sidewalk and paved approaches along South Summit Drive in Holts Summit as well as stormwater drainage improvements. Services provided by Bartlett & West included survey and design as well as construction inspection.

Construction inspection services involved contract administration, inspection and

Contact

Brandon Ruediger

Street Superintendent

573.896.5600

materials testing, submittals review, daily and pay diaries, pay requests, change orders, wage rate interviews, payroll compliance checks, and final close-out documentation per LPA Manual requirements.

