

Addendum No. 1



ISSUED BY: Great River Engineering
2826 S. Ingram Mill Rd.
Springfield, Missouri 65804
(417) 886-7171

DATE: March 18, 2024

FOR: Shelbina Lake Bridge Replacement and Spillway Improvements
GRE Project # 4514

The attached revisions hereby supersede any and all data with which they may conflict as indicated on the Drawings, Specifications and related documents issued in the original set and any previous addendums. Each trade is responsible for changes in its work caused by changes in the work of other trades. This addendum is a part of and shall be attached to the original set of plans and specifications for the work.

Notification: There have been no changes or addendums prior to this addendum.

CHANGES:

1. Contract Documents

- a. The Wage Determination was updated from the superseded General Decision Number MO20230001 to the General Decision Number MO20240001 as of 03/08/2024.
- b. The attached bid form includes the updated quantities for "CLASS B CONCRETE FIBER REINFORCED", "CONSTRUCTION SIGNS", and "TYPE III MOVEABLE BARRICADE". The updated bid form also includes a line item for "FULL DEPTH WALL REPLACEMENT".
- c. The Job Special Provisions shall have the following Spillway Repair Job Special Provisions included:

SPILLWAY REPAIR JOB SPECIAL PROVISIONS

1. GOVERNING SPECIFICATIONS AND DEFINITION CHANGES

The general requirements, provisions and technical specifications governing the completion of the work contemplated shall be those known and designated as the "Missouri Standard Specifications for Highway Construction, 2023, Third", and all revisions up until the date shown on the executed contract. The general requirements together with General and Job Special Provisions, if any, and other State and Federal requirements contained in the contract documents. In the event of conflict between the above referenced specifications and special provision, the Job Special Provisions shall have precedence, followed in descending priority by the General Special Provisions, and the MoDOT Standard Specifications. In the event of a disagreement between the Job Special Provisions and the Plans, the Plans shall have precedence.

All reference to the "County," "State" or "Owner" shall be interpreted as the City of Shelbina, Shelby County, Missouri. All references to "Engineer" shall be interpreted as "Design Professional".

2. REPLACEMENT PROCEDURES USING CONCRETE

The use of a concrete saw to outline the area to be removed is recommended. When a saw is not available, and cracks or joints cannot be used then air chisels may be used to make the outline cut. Air chisels, a hydro hammer or a stinger is then used to break up the concrete to be removed. Moderate care should be

exercised to assure a minimum of under breaking of the pavement adjacent to the patch. The old pavement should be broken into pieces that can be handles and removed easily.

The broken concrete to be stockpiles will be placed in areas where such stockpiles will not detract from the appearance of the roadside, preferably on supplementary roads or in areas which are screened from view. If possible, the broken concrete should be dumped in washes or eroded areas at the time it is removed.

The subgrade shall be properly shaped graded and tamped to conform to the type of pavement being patched. Underpinning will be provided by excavating the subgrade 3 to 6 in. below and 4 to 6 in. back under the slab. It will be tapered out to original subgrade elevation in 18 to 24 in. from the saw cut, providing the subgrade is solid. If the patch is less than 6 ft. longitudinally, tapering back is not required. All the spongy or poor subgrade material shall be removed to a solid base or to a maximum depth of six to eight in. below the bottom of the slab and replaced with concrete. Open graded base material should not be used. If the subgrade is dry, it must be wet down before concrete is placed.

Patches 15 ft. or longer will be reinforced with wire mesh and no other steel reinforcing is to be used. When replacing only one lane of concrete, all steel crossing the longitudinal joint is to be cut. The length of any patch should not exceed the design joint spacing.

Two in. thick wood form boards or steel forms shall be used for forming and shall be staked or braced to hold the correct alignment. If the adjacent pavement in another lane is to be removed later, a form board will have to be placed at the centerline. This can be accomplished by removing just enough concrete in the adjacent lane to place the form.

The concrete is then placed in the hole, leveled up, vibrated, and struck off with a straight edge. On upper deck sections the concrete is to be brought up only to the top of the original concrete, cured with liquid asphalt and then finished off with asphaltic concrete.

Care must be exercised in finishing to obtain a smooth riding surface. Longer patches should be checked with a taut string. The finished texture should conform to the surface of the adjacent pavement, but no smoother than that obtained by a belt or broom. Take an edger and break the bond between the old concrete and the new concrete at joints. The bond should be broken as deeply as possible without scoring or marking the surface while at the same time rounding the edge of the new concrete. Except for upper deck sections, curing should be accomplished by the application of a transparent curing compound.

If the forms do not present a hazard, they may be removed the next day. When removed the void left should be filled with dirt, base rock or asphalt mix and compacted. The material used depends upon the type of shoulder involved. Any shoulder repair necessitated by this operation should be made at this time and the cost charged against the Concrete Replacement Function.

3.

STEEL FIBER REINFORCED CONCRETE OVERLAY

1.0 Description. This work shall consist of constructing a steel fiber reinforced concrete slab overlay with Class B concrete (as noted on the plans) and steel fiber reinforcement and in accordance with Sec 501, Sec 703.

2.0 Materials.

2.1 Steel fibers shall be made from stainless steel and nominally be 2.0 inches (50 mm) long and meet the physical property requirements prescribed in ASTM A820. 1 inch Helix Fibers are also allowed. Steel fibers shall have a quantity of at least 2,000 fibers per pound and a fiber aspect ratio of 40 to 60. The steel fibers shall not have any hooks or 90° bends. The steel fibers shall be free from rust, oil, and other deleterious materials. Steel fibers shall be transported, stored, and applied to the concrete mixture in accordance with the manufacturer's recommendations.

2.1.1 The contractor shall provide initial on-site technical assistance from the supplier of the steel fiber reinforcement. Further technical assistance shall be available at the request of the engineer.

2.2 Mix Design. The steel fiber dosage rate shall be 80 pounds per cubic yard of concrete.

2.3 Concrete Bonding Agent. Shall conform to ASTM C-881 Types I, II, and V, Grade 2, Class C and AASHTO M-235 specifications. It shall have a minimum of 6,000 psi (14 day) Flexure strength and a minimum Tensile Strength of 6,000 psi (7 day). Additionally, it shall have a minimum Tensile Adhesion Strength of 1,400 psi (2-day moist cure). This concrete bonding agent shall be applied to manufacturers recommendations prior to placement of the steel fiber concrete overlay.

3.0 Removal of Unsound Concrete for Spillway Repairs.

3.1 Following completion of all special zone repairs and prior to placement of overlay, the engineer will visually inspect and perform a sounding test on the bridge deck. Any areas of the deck that are loose, partially delaminated, or otherwise unsound, will be and marked for removal. The contractor shall remove the unsound concrete per Sec 704.4.1.3.

3.2 Following removal of all unsound concrete, all debris shall be removed from the deck prior to placement of overlay, at no additional cost.

4.0 Construction Requirements.

4.1 Pumping. Pumping shall generally be in accordance with Sec 703. Unless otherwise approved by the engineer, the following practices shall be observed:

- (a) Avoid rapid reduction in line size from the pump to the lines.
- (b) Operating pressure inside the line should be kept as low as functionally possible.
- (c) Use 5-inch (minimum) diameter clean, steel lines.

4.2 Spillway Repair.

4.2.1 Spillway repair is defined as providing and placing the spillway overlay material necessary to fill all depressions in the deck below the bottom of the planned deck overlay thickness. This material is placed monolithic during the spillway overlay process.

4.2.2 Shallow and deep areas, including approved half soled repair areas, may be filled monolithically with the spillway overlay. Any standing water on the spillway or in the depressed areas shall be removed prior to placement of concrete overlay material. Hand vibrators shall be used in areas where concrete is being placed around reinforcement, deeper areas within the pour, and along curb lines and construction joints.

5.0 Method of Measurement.

5.1 Measurement for Removal of Unsound Concrete for Spillway Repairs will be made to the nearest square foot.

5.2 The overlay area will be measured to the nearest square yard based on measurement longitudinally from end of overlay to end of overlay and transversely from edge of overlay to edge of overlay.

5.3 Cleaning of the spillway prior to concrete overlay shall be done with a minimum 3500 psi power washer. The intent is to remove all dirt, moss, vegetation, and dust from the delaminated concrete removal. This shall be done to the engineer or his representative's satisfaction. Payment will be made to the S.Y.

4. SECTION 501 CONCRETE

501.1 Description. Concrete shall consist of a mixture of cement, fine aggregate, coarse aggregate, and water, combined in the proportions specified for the various classes. Admixtures may be added as specifically required or permitted.

501.2 Material. All material shall be in accordance with [Division 1000](#), Material Details, and specifically as follows:

Item	Section
Coarse Aggregate	1005.2
Fine Aggregate	1005.3
Ground Granulated Blast Furnace Slag	1017
Fly Ash	1018
Cement	1019
Concrete Admixture	1054
Concrete Tinting Material	1056
Water	1070

Regardless of the gradation of the coarse and fine aggregate used in concrete for pavement or base, the aggregate shall meet the quality requirements of coarse and fine aggregate for concrete pavement.

501.2.1 Aggregate Acceptance. Quality control (QC) sampling and testing will be performed by the contractor and quality assurance (QA) sampling and testing will be performed by the engineer for aggregate in Portland cement concrete masonry in accordance with the following table at the last possible point of incorporation into the project. Aggregate samples may be taken either by sampling the flowing aggregate stream or upon approval by the engineer, from the stockpile.

502.3.3 Vibrators. Vibrators used for full width vibration of the concrete shall be of the internal type. Vibrating equipment shall be operated in accordance with the manufacturer's recommendation at a frequency to provide satisfactory results but shall be no less than 4500 impulses per minute. Hand vibrators shall have a frequency of

no less than 4500 impulses per minute. The contractor shall always have a tachometer available for checking the vibration frequency.

502.3.4 Concrete Saw. If sawed joints are required, equipment shall be capable of providing a groove of the specified dimensions in the concrete. Equipment shall be a wet-cut saw, referred to as a “conventional concrete saw” or a lighter weight dry-cut saw, referred to as an “early-entry concrete saw,” used to establish joints sooner than the conventional saw.

502.3.5 Equipment for Sealing Joints. An approved double boiler-type heating kettle equipped with a mechanical agitator and a satisfactory temperature indicating device shall be required. The equipment shall be capable of heating the joint sealing material uniformly without damage.

502.4 Construction Requirements.

502.4.1 Weather Limitations. Concrete shall not be placed upon frozen subgrade. All concrete shall be effectively protected from freezing until a minimum compressive strength of 3,500 psi has been attained. The contractor shall provide a method, meeting the approval from the engineer, of monitoring the concrete that demonstrates that the concrete has been protected from freezing. Regardless of precautions taken, the contractor shall assume all risks, and all frozen concrete shall be replaced at the contractor's expense.

502.4.2 Protection Against Rain. To protect against rain, the contractor shall always have on location material for the protection of the edges and surface of the unhardened concrete. The contractor shall protect the concrete from damage due to rain. Failure to properly protect unhardened concrete may constitute cause for the removal and replacement of defective concrete at the contractor's expense.

502.4.3 Setting Forms. Forms shall be sufficiently supported to avoid displacement during paving operations. Both straight and curved forms shall be supported in such position that the face of the form shall be vertical on tangents and perpendicular to the superelevated section on curves. The top of the form shall not vary more than 1/8 inch from the true grade line during placing, compacting, and finishing operations. The form alignment shall not vary more than 1/4 inch from the true alignment.

502.4.6 Placing Concrete. The concrete shall be deposited over the entire width of the subgrade in such a manner as to prevent segregation and to minimize handling. Mixers, including truck mixers and trucks used for transporting concrete, will be permitted to discharge concrete by chute or by dumping directly on the subgrade or prepared base provided the underlying material is not damaged or distorted. Honeycomb in the concrete base or pavement edge may be cause for rejection of the concrete.

502.4.7 Tie Bar Placement. Tie bars shall be supported in the proper position by chairs driven into the subgrade or may be placed by approved mechanical methods prior to the consolidation of the concrete after the concrete has been struck off. Tie bars shall be free from dirt, oil, paint, and grease. Tie bars required at longitudinal construction joints shall be positioned before concrete base or pavement consolidation. Tie bars shall be placed on 30” centers for the full depth slabs, both longitudinally and horizontally. #5 tie bars, 6” in length shall be placed 3” into existing spillway and protrude 3” into new overlay. In locations where existing energy dissipators are, the 6” pin shall be deleted. #5 pins shall be drilled and sufficiently anchored by using an approved epoxy that meets or exceeds 1800 psi after two days.

502.4.8 Final Strike-off, Consolidation and Finishing. Machine finishing by extrusion methods or by vibrating and screeding processes shall be required for all concrete except as permitted in accordance with [Sec 502.4.8.6](#). After the final course of the concrete has been placed, the concrete shall be struck-off and thoroughly vibrated until concrete of a uniform and satisfactory density is attained. The surface of the pavement shall be of uniform texture and to the proper grade and typical section.

502.4.8.1 Consolidation. Vibrating tubes shall extend into the concrete the distance necessary to provide adequate consolidation. Vibrators shall be operated only when the machine to which the vibrators are attached is moving. Care shall be taken that the vibrator does not penetrate the subgrade or dislodge or move the joints. Vibrators shall not come in contact with the reinforcement, load transfer devices, subgrade or side forms.

502.4.8.2 Added Finishing Water. Moisture in any form shall not be applied to the surface of the concrete except for emergency conditions. When emergency conditions exist and it becomes necessary to apply additional moisture to the surface of the concrete to complete the final finishing operation, water may only be applied in the

form of a fine pressure spray. Under such conditions, placement of additional concrete on the subgrade shall be discontinued until the emergency conditions cease.

502.4.8.3 Surface Texture. After surface irregularities have been removed, the concrete surface shall be given a uniformly roughened finish. The surface texture shall be tested in accordance with ASTM E 965, except as modified herein, to ensure the texture is adequate for desired friction characteristics. The test locations will be the same locations as identified for strength and thickness determination.

502.4.8.5 Hand Finishing. Compacting, vibrating, and finishing concrete by hand methods will be permitted:

502.5 Joints. Joints shall be of the specified type and dimensions and constructed at the locations shown on the plans or as approved by the engineer. Where joints are preformed, the form or joint shall be set and securely fastened to ensure the joint being in the required position when the concrete is finished. The final position of dowels and tie bars shall be parallel to the subgrade and perpendicular to the line of the joint. Dowel supporting assemblies shall conform to one of the types shown on the plans. The concrete shall be placed to avoid displacement or disarrangement of the joint installations.

502.5.2 Construction Joints. Construction joints shall be made at the close of each day's work or when the work is stopped or interrupted for more than 30 minutes. Transverse construction joint shall be located 15 feet from the last contraction joint. Construction joints shall be constructed perpendicular to the top surface and the centerline of the concrete base or pavement. Construction joints may be formed with a timber header or may be sawed full depth. The final joint shall conform to the cross-section of the pavement. Before paving operations are resumed, all surplus concrete and other refuse shall be removed from the subgrade.

502.5.3 Sawing Joints. Unless otherwise provided, all transverse contraction joints and all Type L longitudinal joints shall be sawed in a single cutting operation with all joint cuts to the dimensions shown on the plans. For intersections and irregular pavement, joints shall be sawed at locations as approved by the engineer. Sawing of the joints shall begin as soon as the concrete has hardened sufficiently to permit sawing without excessive raveling. All joints shall be established before uncontrolled shrinkage cracking takes place. The sawing of any joint shall be omitted if a crack occurs at or near the joint location prior to the time of sawing. Sawing shall be discontinued when a crack develops ahead of the saw. The engineer reserves the right to have the contractor install preformed type joints on multiple width construction when the use of sawed joints fails to prevent random cracking. Any pavement with random cracking not controlled by tie bars shall be either removed and replaced tie bars as appropriate to the nearest controlled joint or repaired with some other method approved by the engineer at the contractor's expense. If a planned saw joint intersects an elevated energy dissipator, the saw joint shall terminate closest to the obstruction as the saw will allow.

502.5.3.1 Forming Longitudinal Joint. A joint forming device may be used to establish the longitudinal joint between the two driving lanes or between the driving lane and shoulder 6 foot wide or greater. The pavement shall have a plan thickness of 8 inches or greater.

502.5.3.1.6 Joint Continuity. The contractor shall ensure longitudinal joint continuity between consecutive day's paving.

502.5.3.1.7 Unacceptable Results. If the test results or the quality of the joint forming process are not satisfactory to the engineer, the contractor shall saw the longitudinal joint for the length affected.

502.5.4 Sealing Joints. All sawed contraction joints shall be unsealed, unless otherwise specified. Sawed or formed expansion joints shall be sealed with joint sealing material before the pavement is opened to any traffic, including construction traffic. Immediately prior to sealing, the joints shall be thoroughly cleaned and dried. The sealing material shall be heated to the pouring temperature recommended by the manufacturer. Any material which has been heated above the maximum safe heating temperature will be rejected. Any excess material shall be removed from the pavement surface.

5. SECTION 704 CONCRETE MASONRY REPAIR

704.1 Description. This work shall consist of removing deteriorated concrete, preparing the repair site, forming where required, placing, and finishing new concrete or qualified special mortar, applying epoxy, and applying concrete crack filler in the required areas.

704.2 Material. All material shall be in accordance with [Division 1000](#), Material Details, and specifically as follows. The qualified special mortar shall be from the qualified rapid set concrete patching material listing available from Construction and Materials or MoDOT's web site.

Items	Section
Concrete	501
Concrete Bonding Compound and Epoxy Mortar	623
Gradation E Coarse Aggregate	1005
Type III Cement	1019
Type III Epoxy or Epoxy Material for the Polymer Wearing Surface	1039
Concrete Crack Filler	1053
Water	1070

704.3 Types of Repair.

704.3.1 Rock Wall Skim Coat. This work shall consist of partial removal of loose debris and replacement of mortar spillway approximately 2" thick over the rock wall to fill imperfections. Voids in the rock wall shall be filled prior to placement of skim coat.

704.3.2 Full Depth Repair. This work shall consist of complete removal and replacement of the spillway slab concrete in the required areas. The removal and replacement of the deteriorated slabs in the required areas.

704.3.3 Modified Spillway Repair. This work shall consist of the removal of visibly loose or spalled concrete and placement of Class B-1 concrete or qualified special mortar in the areas where the reinforcing steel is exposed. If reinforcing steel is not exposed, the masonry repair shall be placed monolithically into the imperfections.

704.3.4 (Unformed) Structure Repair for Energy Dissipators. This work shall consist of the removal of visibly loose or spalled concrete and repairing the deteriorated concrete on the rock walls and energy dissipators in the required areas with a qualified special mortar.

2. Plans

- a. Sheet C1 was updated to add Sheet A1 to the plan set.
- b. Sheet C6 was updated to update the quantity for "CLASS B CONCRETE FIBER REINFORCED" and add the line item for "FULL DEPTH WALL REPLACEMENT".
- c. Sheet C7 "8' x 8' GRID SECTION VIEW" was updated to provide clarity regarding the spillway repair and 4" concrete overlay. "WALL REPAIR DETAIL" was updated to include reinforcement.
- d. Sheet A1 was added to the plan set to provide information regarding the known areas of unsound concrete at the time of the inspector's site visit.

Attached Supplemental Documents

- Updated Wage Determination
- Updated Bid Form
- Updated Plan Sheets C1, C6, and C7
- New Plan Sheet A1

There are no other clarifications or changes included with this Addendum.

Superseded General Decision Number: MO20230001

State: Missouri

Construction Types: Heavy and Highway

Counties: Missouri Statewide.

HEAVY AND HIGHWAY CONSTRUCTION PROJECTS

Note: Contracts subject to the Davis-Bacon Act are generally required to pay at least the applicable minimum wage rate required under Executive Order 14026 or Executive Order 13658. Please note that these Executive Orders apply to covered contracts entered into by the federal government that are subject to the Davis-Bacon Act itself, but do not apply to contracts subject only to the Davis-Bacon Related Acts, including those set forth at 29 CFR 5.1(a)(1).

If the contract is entered into on or after January 30, 2022, or the contract is renewed or extended (e.g., an option is exercised) on or after January 30, 2022:	. Executive Order 14026 generally applies to the contract. . The contractor must pay all covered workers at least \$17.20 per hour (or the applicable wage rate listed on this wage determination, if it is higher) for all hours spent performing on the contract in 2024.
If the contract was awarded on or between January 1, 2015 and January 29, 2022, and the contract is not renewed or extended on or after January 30, 2022:	. Executive Order 13658 generally applies to the contract. . The contractor must pay all covered workers at least \$12.90 per hour (or the applicable wage rate listed on this wage determination, if it is higher) for all hours spent performing on that contract in 2024.

The applicable Executive Order minimum wage rate will be adjusted annually. If this contract is covered by one of the Executive Orders and a classification considered necessary for performance of work on the contract does not appear on this wage determination, the contractor must still submit a conformance request.

Additional information on contractor requirements and worker protections under the Executive Orders is available at <http://www.dol.gov/whd/govcontracts>.

Modification Number	Publication Date
0	01/05/2024
1	01/19/2024
2	02/23/2024

CARP0002-002 05/01/2023

ST. LOUIS COUNTY AND CITY

	Rates	Fringes
Carpenters.....	\$ 40.34	21.25

 CARP0005-006 05/01/2023

CASS (Richards-Gebauer AFB ONLY), CLAY, JACKSON, PLATTE AND RAY
 COUNTIES

	Rates	Fringes
Carpenters:		
CARPENTERS & LATHERS.....	\$ 43.28	21.25
MILLWRIGHTS & PILEDRIVERS...	\$ 43.28	21.25

 CARP0011-001 05/01/2023

	Rates	Fringes
Carpenter and Piledriver		
ADAIR, AUDRAIN (West of Hwy 19), BOONE, CALLAWAY, CHARITON, COLE, COOPER, HOWARD, KNOX, LINN, MACON, MILLER, MONITEAU, MONROE, OSAGE, PUTNAM, RANDOLPH, SCHUYLER, SHELBY AND SULLIVAN COUNTIES.....	\$ 34.31	21.25
ATCHISON, ANDREW, BATES, CALDWELL, CARROLL, DAVIESS, DEKALB, GENTRY, GRUNDY, HARRISON, HENRY, HOLT, LIVINGSTON, MERCER, NODAWAY, ST. CLAIR, SALINE AND WORTH COUNTIES.....	\$ 32.64	21.25
AUDRAIN (East of Hwy.19), RALLS, MARION, LEWIS, CLARK AND SCOTLAND COUNTIES.	\$ 34.31	21.25
BARRY, BARTON, CAMDEN, CEDAR, CHRISTIAN, DADE, DALLAS, DOUGLAS, GREENE, HICKORY, JASPER, LACLEDE, LAWRENCE, MCDONALD, NEWTON, OZARK, POLK, STONE, TANEY, VERNON, WEBSTER AND WRIGHT COUNTIES.	\$ 32.20	21.25
BENTON, MORGAN AND PETTIS...	\$ 32.69	21.25
BOLLINGER, BUTLER, CAPE GIRARDEAU, DUNKLIN, MISSISSIPPI, NEW MADRID, PEMISCOT, PERRY, STE. GENEVIEVE, SCOTT, STODDARD AND WAYNE COUNTIES.....	\$ 34.15	21.25
BUCHANAN, CLINTON, JOHNSON AND LAFAYETTE COUNTIES.....	\$ 33.43	21.25
CARTER, HOWELL, OREGON AND RIPLEY COUNTIES.....	\$ 32.99	21.25
CRAWFORD, DENT, GASCONADE,		

IRON, MADISON, MARIES, MONTGOMERY, PHELPS, PULASKI, REYNOLDS, SHANNON AND TEXAS COUNTIES.....	\$ 34.14	21.25
FRANKLIN COUNTY.....	\$ 37.93	21.25
JEFFERSON AND ST. CHARLES COUNTIES.....	\$ 40.34	21.25
LINCOLN COUNTY.....	\$ 36.21	21.25
PIKE, ST. FRANCOIS AND WASHINGTON COUNTIES.....	\$ 35.01	21.25
WARREN COUNTY.....	\$ 36.69	21.25

ELEC0001-002 07/17/2022

BOLLINGER, BUTLER, CAPE GIRARDEAU, CARTER, DUNKLIN, FRANKLIN,
IRON, JEFFERSON, LINCOLN, MADISON, MISSISSIPPI, NEW MADRID,
PEMISCOT, PERRY, REYNOLDS, RIPLEY, ST. CHARLES, ST. FRANCOIS,
ST. LOUIS (City and County), STE. GENEVIEVE, SCOTT, STODDARD,
WARREN, WASHINGTON AND WAYNE COUNTIES

	Rates	Fringes
Electricians.....	\$ 43.56	29.10

ELEC0002-001 09/04/2022

ADAIR, AUDRAIN, BOONE, CALLAWAY, CAMDEN, CARTER, CHARITON,
CLARK, COLE, COOPER, CRAWFORD, DENT, FRANKLIN, GASCONADE,
HOWARD, HOWELL, IRON, JEFFERSON, KNOX, LEWIS, LINCON, LINN,
MACON, MARIES, MARION, MILLER, MONITEAU, MONROE, MONTGOMERY,
MORGAN, OREGON, OSAGE, PERRY, PHELPS, PIKE, PULASKI, PUTNAM,
RALLS, RANDOLPH, REYNOLDS, RIPLEY, ST. CHARLES, ST. FRANCOIS,
ST. LOUIS (City and County), STE. GENEVIEVE, SCHUYLER,
SCOTLAND, SHANNON, SHELBY, SULLIVAN, TEXAS, WARREN AND
WASHINGTON COUNTIES

	Rates	Fringes
Line Construction:		
Equipment Operator.....	\$ 44.16	23.14
Groundman & Truck Driver....	\$ 33.74	19.34
Lineman & Cable Splicer.....	\$ 51.45	25.81

ELEC0053-004 01/01/2024

	Rates	Fringes
Line Construction: (ANDREW, ATCHINSON, BARRY, BARTON, BUCHANAN, CALDWELL, CEDAR, CHRISTIAN, CLINTON, DADE, DALLAS, DAVIES,, DEKALB, DOUGLAS, GENTRY, GREENE, GRUNDY, HARRISON, HICKORY, HOLT, JASPER, LACLEDE, LAWRENCE, LIVINGSTON, MCDONALD, MERCER, NEWTON, NODAWAY, OZARK, POLK, ST. CLAIR, STONE, TANEY, VERNON, WEBSTER, WORTH AND WRIGHT COUNTIES)		
Groundman Powderman.....	\$ 35.71	1.5%+9.04
Groundman.....	\$ 32.32	1.5%+18.25

Lineman Operator.....	\$ 48.73	1.5%+23.33
Lineman.....	\$ 54.02	1.5%+25.08
Line Construction; (BATES, BENTON, CARROLL, CASS, CLAY, HENRY, JACKSON, JOHNSON, LAFAYETTE, PETTIS, PLATTE, RAY AND SALINE COUNTIES)		
Groundman Powderman.....	\$ 33.58	18.34
Groundman.....	\$ 31.33	17.60
Lineman Operator.....	\$ 45.60	22.48
Lineman.....	\$ 50.31	24.11

ELEC0095-001 09/01/2023

BARRY, BARTON, CEDAR, DADE, JASPER, LAWRENCE, MCDONALD, NEWTON,
ST CLAIR, AND VERNON COUNTIES

	Rates	Fringes
Electricians:		
Cable Splicers.....	\$ 25.40	12.19
Electricians.....	\$ 30.20	16.56

ELEC0124-007 08/28/2023

BATES, BENTON, CARROLL, CASS, CLAY, COOPER, HENRY, JACKSON,
JOHNSON, LAFAYETTE, MORGAN, PETTIS, PLATTE, RAY AND SALINE
COUNTIES:

	Rates	Fringes
Electricians.....	\$ 47.37	25.89

* ELEC0257-003 03/01/2024

AUDRAIN (Except Cuivre Township), BOONE, CALLAWAY, CAMDEN,
CHARITON, COLE, CRAWFORD, DENT, GASCONADE, HOWARD, MARIES,
MILLER, MONITEAU, OSAGE, PHELPS AND RANDOLPH COUNTIES

	Rates	Fringes
Electricians:		
Cable Splicers.....	\$ 30.42	16.085
Electricians.....	\$ 38.50	17.515

ELEC0350-002 12/01/2023

ADAIR, AUDRAIN (East of Highway 19), CLARK, KNOX, LEWIS, LINN,
MACON, MARION, MONROE, MONTGOMERY, PIKE, PUTNAM, RALLS,
SCHUYLER, SCOTLAND, SHELBY AND SULLIVAN COUNTIES

	Rates	Fringes
Electricians.....	\$ 36.60	20.96

ELEC0453-001 09/01/2023

	Rates	Fringes
Electricians:		
CHRISITAN, DALLAS,		

DOUGLAS, GREENE, HICKORY,
 HOWELL, LACLEDE, OREGON,
 OZARK, POLK, SHANNON,
 WEBSTER and WRIGHT COUNTIES.\$ 36.08 17.91
 PULASKI and TEXAS COUNTIES..\$ 36.08 17.91
 STONE and TANEY COUNTIES....\$ 26.62 17.11

 ELEC0545-003 06/01/2023

ANDREW, BUCHANAN, CLINTON, DEKALB, ATCHISON, HOLT, MERCER,
 GENTRY, HARRISON, DAVIESS, GRUNDY, WORTH, LIVINGSTON, NODAWAY,
 AND CALDWELL COUNTIES

	Rates	Fringes
Electricians:.....	\$ 36.75	20.40

 ELEC0702-004 01/01/2024

BOLLINGER, BUTLER, CAPE GIRARDEAU, DUNKLIN, MADISON,
 MISSISSIPPI, NEW MADRID, PEMISCOT, SCOTT, STODDARD AND WAYNE
 COUNTIES

	Rates	Fringes
Line Construction:		
Groundman - Class A.....	\$ 36.89	30%+8.60
Groundman-Equipment Operator Class II (all other equipment).....	\$ 44.92	30%+8.60
Heavy-Equipment Operator Class I (all crawler type equipment D-4 and larger)...	\$ 50.37	30%+8.60
Lineman.....	\$ 63.30	30%+8.60

 ENGI0101-001 05/01/2020

ANDREW, ATCHISON, BATES, BENTON, BUCHANAN, CALDWELL, CARROLL,
 CHARITON, CLINTON, COOPER, DAVIESS, DEKALB, GENTRY, GRUNDY,
 HARRISON, HENRY, HOLT, HOWARD, JOHNSON, LAFAYETTE, LINN,
 LIVINGSTON, MERCER, NODAWAY, PETTIS, SALINE, SULLIVAN AND WORTH
 COUNITES

	Rates	Fringes
Power equipment operators:		
GROUP 1.....	\$ 34.73	18.20
GROUP 2.....	\$ 34.33	18.20
GROUP 3.....	\$ 32.33	18.20

POWER EQUIPMENT OPERATORS CLASSIFICATIONS

GROUP 1: Asphalt roller operator, finish; asphalt paver and
 spreader; asphalt plant operator; auto grader or trimmer or
 sub-grader; backhoe; blade operator (all types); boilers -
 2; booster pump on dredge; bulldozer operator; boring
 machine (truck or crane mounted); clamshell operator;
 concrete mixer paver; concrete plant operator; concrete
 pump operator; crane operator; derrick or derrick trucks;
 ditching machine; dragline operator; dredge engineman;
 dredge operator; drill cat with compressor mounted
 (self-contained) or similar type self- propelled rotary

drill (not air tract); drilling or boring machine (rotary-self-propelled); finishing machine operator; greaser; high loader-fork lift-skid loader (all types); hoisting engineer (2 active drums); locomotive operator (standard guage); mechanics and welders (field and plants); mucking machine operator; pile drive operator; pitman crane or boom truck (all types); push cat; quad track; scraper operators (all types); shovel operator; sideboom cats; side discharge spreader; skimmer scoop operators; slip form paver operator (CMI, Rex, Gomeco or equal); la tourneau rooter (all tiller types); tow boat operator; truck crane; wood and log chippers (all types).

GROUP 2: A-frame truck operator; articulated dump truck; back filler operator; boilers (1); chip spreader; churn drill operator; compressor; concrete mixer operator, skip loader; concrete saws (self-propelled); conveyor operator; crusher operator; distributor operator; elevating grader operator; farm tractor (all attachments); fireman rig; float operator; form grade operator; hoisting engine (one drum); maintenance operator; multiple compactor; pavement breaker, self-propelled hydra-hammer (or similar type); paymill operator; power shield; pumps; roller operator (with or without blades); screening and washing plant; self-propelled street broom or sweeper; siphons and jets; straw blower; stump cutting machine; siphons and jets; tank car heater operator (combination boiler and booster); welding machine; vibrating machine operator (not hand held); welding machine.

GROUP 3: (a) Oiler;
 (b) Oiler driver
 (c) Mechanic.

HOURLY PREMIUMS:

THE FOLLOWING CLASSIFICATIONS SHALL RECEIVE (\$.25) ABOVE GROUP 1 RATE: Dragline operator - 3 yds. & over; shovel 3 yds. & over; clamshell 3 yds. & over; Crane, rigs or piledrivers, 100' of boom or over (incl. jib.), hoist - each additional active drum over 2 drums

THE FOLLOWING CLASSIFICATIONS SHALL RECEIVE (\$.50) ABOVE GROUP 1 RATE: Tandem scoop operator; crane, rigs or piledrivers 150' to 200' of boom (incl. jib.)

THE FOLLOWING CLASSIFICATIONS SHALL RECEIVE (\$.75) ABOVE GROUP 1 RATE: Crane rigs, or piledrivers 200 ft. of boom or over (including jib.)

 ENGI0101-005 04/01/2022

CASS, CLAY, JACKSON, PLATTE AND RAY COUNTIES

	Rates	Fringes
Power equipment operators:		
GROUP 1.....	\$ 38.42	20.44
GROUP 2.....	\$ 37.38	20.44
GROUP 3.....	\$ 32.91	20.44
GROUP 4.....	\$ 36.26	20.44

POWER EQUIPMENT OPERATORS CLASSIFICATIONS

GROUP 1: Asphalt roller operator, finish; asphalt paver and

spreader; asphalt plant operator; auto grader or trimmer or sub-grader; backhoe; blade operator (all types); boilers-2; booster pump on dredge; boring machine (truck or crane mounted); bulldozer operator; clamshell operator; concrete cleaning decontamination machine operator; concrete mixer paver; concrete plant operator; concrete pump operator; crane operator; derrick or derrick trucks; ditching machine; dragline operator; dredge engineman; dredge operator; drillcat with compressor mounted (self-contained) or similar type self propelled rotary drill (not air tract); drilling or boring machine (rotary - self-propelled); finishing machine operator; greaser; heavy equipment robotics operator/mechanic; horizontal directional drill operator; horizontal directional drill locator; loader-forklift - skid loader (all types); hoisting engineer (2 active drums); locomotive operator (standard guage); master environmental maintenance mechanic; mechanics and welders (field and plants); mucking machine operator; piledrive operator; pitman crane or boom truck (all types); push cat; quad-track; scraper operators (all types); shovel operator; side discharge spreader; sideboom cats; skimmer scoop operator; slip-form paver (CMI, REX, Gomaco or equal); la tourneau rooter (all tiller types); tow boat operator; truck crane; ultra high perssure waterjet cutting tool system operator/mechanic; vacuum blasting machine operator/mechanic; wood and log chippers (all types)

GROUP 2: ""A"" Frame truck operator; back filler operator; boilers (1); chip spreader; churn drill operator; concrete mixer operator, skip loader; concrete saws (self-propelled); conveyor operator; crusher operator; distributor operator; elevating grader operator; farm tractor (all attachments); fireman rig; float operator; form grader operator; hoisting engine (1 drum); maintenance operator; multiple compactor; pavement breaker, self-propelled hydra- hammer (or similar type); power shield; paymill operator; pumps; siphons and jets; stump cutting machine; tank car heater operator (combination boiler and booster); compressor; roller operator (with or without blades); screening and washing plant; self-propelled street broom or sweeper; straw blower; tank car heater operator (combination boiler and booster); vibrating machine operator (not hand held)

GROUP 3: Oilers

GROUP 4: Oiler Driver (All Types)

FOOTNOTE:

HOURLY PREMIUMS FOLLOWING CLASSIFICATIONS SHALL RECEIVE (\$1.00) ABOVE GROUP 1 RATE:

Clamshells - 3 yd. capacity or over; Cranes or rigs, 80 ft. of boom or over (including jib); Draglines, 3 yd. capacity or over;

Piledrivers 80 ft. of boom or over (including jib);

Shovels & backhoes, 3 yd. capacity or over.

ENGI0101-022 05/01/2019

BARRY, BARTON, CAMDEN, CEDAR, CHRISTIAN, DADE, DALLAS, DOUGLAS, GREENE, HICKORY, JASPER, LACLEDE, LAWRENCE, MCDONALD, NEWTON, OZARK, POLK, ST. CLAIR, STONE, TANEY, VERNON, WEBSTER AND WRIGHT COUNTIES and CITY OF SPRINGFIELD

	Rates	Fringes
Power equipment operators:		
GROUP 1.....	\$ 31.72	14.88
GROUP 2.....	\$ 31.37	14.88
GROUP 3.....	\$ 31.17	14.88
GROUP 4.....	\$ 29.12	14.88

POWER EQUIPMENT OPERATORS CLASSIFICATIONS

GROUP 1: Asphalt finishing machine & trench widening spreader; asphalt plant console operator; autograder; automatic slipform paver; backhoe; blade operator - all types; boat operator - tow; boilers-2; central mix concrete plant operator; clamshell operator; concrete mixer paver; crane operator; derrick or derrick trucks; ditching machine; dozer operator; dragline operator; dredge booster pump; dredge engineman; dredge operator; drill cat with compressor mounted on cat; drilling or boring machine rotary self-propelled; highloader; hoisting engine - 2 active drums; launch hammer wheel; locomotive operator; - standard guage; mechanic and welders; mucking machine; off-road trucks; piledriver operator; pitman crane operator; push cat operator; quad trac; scoop operator - all types; shovel operator; sideboom cats; skimmer scoop operators; trenching machine operator; truck crane.

GROUP 2: A-frame; asphalt hot-mix silo; asphalt plant fireman (drum or boiler); asphalt plant man; asphalt plant man; asphalt plant mixer operator; asphalt roller operator; backfiller operator; barber-greene loader; boat operator (bridges and dams); chip spreader; concrete mixer operator - skip loader; concrete plant operator; concrete pump operator; crusher operator; dredge oiler; elevating grader operator; fork lift; greaser-fleet; hoisting engine - 1; locomotive operator - narrow gauge; multiple compactor; pavement breaker; powerbroom - self-propelled; power shield; rooter; side discharge concrete spreader; slip form finishing machine; stumpcutter machine; throttle man; tractor operator (over 50 h.p.); winch truck.

GROUP 3: Boilers - 1; chip spreader (front man); churn drill operator; clef plane operator; concrete saw operator (self-propelled); curb finishing machine; distributor operator; finishing machine operator; flex plane operator; float operator; form grader operator; pugmill operator; roller operator, other than high type asphalt; screening & washing plant operator; siphons & jets; sub-grading machine operator; spreader box operator, self-propelled (not asphalt); tank car heater operator (combination boiler & booster); tractor operator (50 h.p. or less); Ulmac, Ulric or similar spreader; vibrating machine operator, not hand;

GROUP 4: Grade checker; Oiler; Oiler-Driver

HOURLY PREMIUMS:

The following classifications shall receive \$.25 above GROUP 1 rate:
 Clamshells - 3 yds. or over; Cranes - Rigs or Piledrivers, 100 ft. of boom or over (including jib);
 Draglines - 3 yds. or over; Hoists - each additional active drum over 2 drums; Shovels - 3 yds. or over;

The following classifications shall receive \$.50 above GROUP 1 rate:

Tandem scoop operator; Cranes - Rigs or Piledrivers, 150 ft. to 200 ft. of boom (including jib); Tandem scoop.

The following classifications shall receive \$.75 above GROUP 1 rate:

Cranes - Rigs or Piledrivers, 200 ft. of boom or over (including jib.).

ENGI0513-004 05/03/2023

FRANKLIN, JEFFERSON, LINCOLN, ST CHARLES, AND WARREN COUNTIES

	Rates	Fringes
Power equipment operators:		
GROUP 1.....	\$ 41.01	29.63
GROUP 2.....	\$ 41.01	29.63
GROUP 3.....	\$ 39.71	29.63
GROUP 4.....	\$ 39.26	29.63

POWER EQUIPMENT OPERATORS CLASSIFICATIONS

GROUP 1: Backhoe, Cable; Backhoe, Hydraulic (2 cu yds bucket and under regardless of attachment, one oiler for 2 or 3, two oilers for 4 through 6); Backhoe, Hydraulic over 2 cu yds; Cableway; Crane, Crawler or Truck; Crane, Hydraulic - Truck or Cruiser mounted, 16 tons and over; Crane, Locomotive; crane with boom including jib over 100 ft from pin to pin; Crane using rock socket tool; Derrick, Steam; Derrick Car and Derrick Boat; Dragline, 7 cu yds and over; Dredge; Gradall, Crawler or tire mounted; Locomotive, Gas, Steam & other powers; Pile Driver, Land or Floating; Scoop, Skimmer; Shovel, Power (Electric, Gas, Steam or other powers); Shovel, Power (7 cu yds and over); Switch Boat; Whirley; Air Tugger with air compressor; Anchor Placing Barge; Asphalt Spreader; Athey Force Feeder Loader, self-propelled; Backfilling Machine; Boat Operator - Push Boat or Tow Boat (job site); Boiler, High Pressure Breaking in Period; Boom Truck, Placing or Erecting; Boring Machine, Footing Foundation; Bullfloat; Cherry Picker; Combination Concrete Hoist and Mixer (such as Mixermobile); Compressor, Two 125 CFM and under; Compressor, Two through Four over 125 CFM; Compressor when operator runs throttle; Concrete Breaker (Truck or Tractor mounted); Concrete Pump (such as Pumpcrete machine); Concrete Saw (self-propelled); Concrete Spreader; Conveyor, Large (not selfpropelled) hoisting or moving brick and concrete into, or into and on floor level, one or both; Crane, Cimbing (such as Linden); Crane, Hydraulic - Rough Terrain, self-propelled; Crane, Hydraulic - Truck or Cruiser mounted - under 16 tons; Drilling machine - Self-powered, used for earth or rock drilling or boring (wagon drills and any hand drills obtaining power from other souces including concrete breakers, jackhammers and Barco equipmnet no engineer required); Elevating Grader; Engine Man, Dredge; Excavator or Powerbelt Machine; Finishing Machine, self- propelled oscillating screed; Forklift; Generators, Two through Six 30 KW or over; Grader, Road with power blade; Greaser; Highlift; Hoist, Concrete and Brick (Brick cages or concrete skips operating or on tower, Towermobile, or similar equipment); Hoist, Three or more drums in use; Hoist, Stack; Hydro-Hammer;

Lad-A-Vator, hoisting brick or concrete; Loading Machine such as Barber-Greene; Mechanic on job site

GROUP 2: Air Tugger with plant air; Boiler (for power or heating shell of building or temporary enclosures in connection with construction work); Boiler, Temporary; Compressor, One over 125 CFM; Compressor, truck mounted; Conveyor, Large (not self- propelled); Conveyor, Large (not self- propelled) moving brick and concrete (distributing) on floor level; Curb Finishing Machine; Ditch Paving Machine; Elevator (outside); Endless Chain Hoist; Fireman (as required); Form Grader; Hoist, One Drum regardless of size (except brick or concrete); Lad-A-Vator, other hoisting; Manlift; Mixer, Asphalt, over 8 cu ft capacity; Mixer, one bag capacity or less; Mixer, without side loader, two bag capacity or more; Mixer, with side loader, regardless of size, not Paver; Mud Jack (where mud jack is used in conjunction with an air compressor, operator shall be paid \$.55 per hour in addition to his basic hourly rate for covering both operations); Pug Mill operator; Pump, Sump - self powered, automatic controlled over 2"; Scissor Lift (used for hoisting); Skid Steer Loader; Sweeper, Street; Tractor, small wheel type 50 HP and under with grader blade and similar equipment; Welding Machine, One over 400 amp; Winch, operating from truck

GROUP 3: Boat operator - outboard motor, job site; Conveyors (such as Con-Vay-It) regardless of how used; Elevator (inside); Heater operator, 2 through 6; Sweeper, Floor

GROUP 4: Crane type

HOURLY PREMIUMS:

Backhoe, Hydraulic 2 cu yds or less without oiler - \$2.00;
Crane, climbing (such as Linden) - \$.50;
Crane, Pile Driving and Extracting - \$.50
Crane with boom (including job) over
100 ft from pin to pin - add \$.01 per foot
to maximum of \$4.00);
Crane, using rock socket tool - \$.50;
Derrick, diesel, gas or electric hoisting material
and erecting steel (150 ft or more above ground) - \$.50;
Dragline, 7 cu yds and over - \$.50;
Hoist, Three or more drums in use - \$.50;
Scoop, Tandem - \$.50;
Shovel, Power - 7 cu yds and over - \$.50;
Tractor, Tandem Crawler - \$.50;
Tunnel, man assigned to work in tunnel or
tunnel shaft - \$.50;
Wrecking, when machines are working on
second floor or higher - \$.50

ENGI0513-006 05/01/2022

ADAIR, AUDRAIN, BOLLINGER, BOONE, BUTLER, CALLAWAY, CAPE
GIRARDEAU, CARTER, CLARK, COLE, CRAWFORD, DENT, DUNKLIN,
GASCONADE, HOWELL, IRON, KNOX, LEWIS, MACON, MADISON, MARIES,
MARION, MILLER, MISSISSIPPI, MONITEAU, MONROE, MONTGOMERY,
MORGAN, NEW MADRID, OREGON, OSAGE, PEMISCOT, PERRY, PHELPS,
PIKE, PULASKI, PUTNAM, RALLS, RANDOLPH, REYNOLDS, RIPLEY, ST.
FRANCOIS, STE. GENEVIEVE, SCHUYLER, SCOTLAND, SCOTT, SHANNON,
SHELBY, STODDARD, TEXAS, WASHINGTON, AND WAYNE COUNTIES

	Rates	Fringes
Power equipment operators:		
GROUP 1.....	\$ 33.24	28.75
GROUP 2.....	\$ 32.89	28.75
GROUP 3.....	\$ 32.69	28.75
GROUP 4.....	\$ 29.04	28.75

POWER EQUIPMENT OPERATORS CLASSIFICATIONS

GROUP 1: Asphalt finishing machine & trench widening spreader, asphalt plant console operator; autograder; automatic slipform paver; back hoe; blade operator - all types; boat operator tow; boiler two; central mix concrete plant operator; clam shell operator; concrete mixer paver; crane operator; derrick or derrick trucks; ditching machine; dozer operator; dragline operator; dredge booster pump; dredge engineman; dredge operator; drill cat with compressor mounted on cat; drilling or boring machine rotary self-propelled; highloader; hoisting engine 2 active drums; launchhammer wheel; locomotive operator standrad guage; mechanics and welders; mucking machine; piledriver operator; pitman crane operator; push cat operator; quad-trac; scoop operator; sideboom cats; skimmer scoop operator; trenching machine operator; truck crane, shovel operator.

GROUP 2: A-Frame; asphalt hot-mix silo; asphalt roller operator asphalt plant fireman (drum or boiler); asphalt plant man; asphalt plant mixer operator; backfiller operator; barber-greene loader; boat operator (bridge & dams); chip spreader; concrete mixer operator skip loader; concrete plant operator; concrete pump operator; dredge oiler; elevating graded operator; fork lift; grease fleet; hoisting engine one; locomotive operator narrow guage; multiple compactor; pavement breaker; powerbroom self-propelled; power shield; rooter; slip-form finishing machine; stumpcutter machine; side discharge concrete spreader; throttleman; tractor operator (over 50 hp); winch truck; asphalt roller operator; crusher operator.

GROUP 3: Spreader box operator, self-propelled not asphalt; tractor operator (50 h.p. or less); boilers one; chip spreader (front man); churn drill operator; compressor over 105 CFM 2-3 pumps 4" & over; 2-3 light plant 7.5 KWA or any combination thereof; clef plane operator; compressor maintenance operator 2 or 3; concrete saw operator (self-propelled); curb finishing mancine; distributor operator; finishing machine operator; flex plane operator; float operator; form grader operator; pugmill operator; riller operator other than high type asphalt; screening & washing plant operator; siphons & jets; subgrading machine operator; tank car heater (combination boiler & booster); ulmac, ulric or similar spreader; vibrating machine operator; hydrobroom.

GROUP 4: Oiler; grout machine; oiler driver; compressor over 105 CFM one; conveyor operator one; maintenance operator; pump 4" & over one.

FOOTNOTE: HOURLY PREMIUMS

Backhoe hydraulic, 2 cu. yds. or under Without oiler - \$2.00
 Certified Crane Operator - \$1.50;

Certified Hazardous Material Operator \$1.50;
 Crane, climbing (such as Linden) - \$0.50;
 Crane, pile driving and extracting - \$0.50;
 Crane, with boom (including jib) over 100' from pin to pin
 add \$0.01 per foot to maximum of \$4.00;
 Crane, using rock socket tool - \$0.50;
 Derrick, diesel, gas or electric, hoisting material and
 erecting steel (150' or more above the ground) - \$0.50;
 Dragline, 7 cu. yds, and over - \$0.50;
 Hoist, three or more drums in use - \$0.50; Scoop, Tandem -
 \$0.50;
 Shovel, power - 7 cu. yds. or more - \$0.50;
 Tractor, tandem crawler - \$0.50;
 Tunnel, man assigned to work in tunnel or tunnel shaft -
 \$0.50;
 Wrecking, when machine is working on second floor or higher -
 \$0.50;

 ENGI0513-007 05/03/2023

ST. LOUIS CITY AND COUNTY

	Rates	Fringes
Power equipment operators:		
GROUP 1.....	\$ 41.01	29.63
GROUP 2.....	\$ 41.01	29.63
GROUP 3.....	\$ 39.71	29.63
GROUP 4.....	\$ 39.26	29.63

POWER EQUIPMENT OPERATORS CLASSIFICATIONS

GROUP 1: Backhoe, cable or hydraulic; cableway; crane
 crawler or truck; crane, hydraulic-truck or cruiser mounted
 16 tons & over; crane locomotive; derrick, steam; derrick
 car & derrick boat; dragline; dredge; gradall, crawler or
 tire mounted; locomotive, gas, steam & other powers; pile
 driver, land or floating; scoop, skimmer; shovel, power
 (steam, gas, electric or other powers); switch boat;
 whirley.

GROUP 2: Air tugger w/air compressor; anchor-placing barge;
 asphalt spreader; atehy force feeder loader (self-
 propelled); backfilling machine; backhoe-loader; boat
 operator-push boat or tow boat (job site); boiler, high
 pressure breaking in period; boom truck, placing or
 erecting; boring machine, footing foundation; bull- float;
 cherry picker; combination concrete hoist & mixer (such as
 mixer mobile); compressor (when operator runs throttle);
 concrete breaker (truck or tractor mounted); concrete pump,
 such as pump-crete machine; concrete saw (self-propelled),
 concrete spreader; conveyor, large (not self-propelled),
 hoisting or moving brick and concrete into, or into and on
 floor level, one or both; crane, hydraulic-rough terrain,
 self-propelled; crane hydraulic-truck or cruiser
 mounted-under 16 tons; drilling machines, self-powered use
 for earth or rock drilling or boring (wagon drills nd any
 hand drills obtaining power from other sources including
 concrete breakers, jackhammers and barco equipment-no
 engineer required); elevating grader; engineman, dredge;
 excavator or powerbelt machine; finishing machine,
 self-propelled oscillating screed; forklift; grader, road
 with power blade; highlift. greaser; hoist, stack,
 hydro-hammer; loading machine (such as barber-greene);

machanic, on job site; mixer, pipe wrapping machines; plant asphalt; plant, concrete producing or ready-mix job site; plant heating-job site; plant mixing-job site; plant power, generating-job site; pumps, two through six self-powered over 2"; pumps, electric submersible, two through six, over 4"; quad-track; roller, asphalt, top or sub-grade; scoop, tractor drawn; spreader box; sub-grader; tie tamper; tractor-crawler, or wheel type with or without power unit, power take-offs and attachments regardless of size; trenching machine; tunnel boring machine; vibrating machine automatic, automatic propelled; welding machines (gasoline or diesel) two through six; well drilling machine

GROUP 3: Conveyor, large (not self-propelled); conveyor, large (not self-propelled) moving brick and concrete distributing) on floor level; mixer two or more mixers of one bag capacity or less; air tugger w/plant air; boiler, for power or heating on construction projects; boiler, temporary; compressor (mounted on truck; curb finishing machine; ditch paving machine; elevator; endless chain hoist; form grader; hoist, one drum regardless of size; lad-a-vator; manlift; mixer, asphalt, over 8 cu. ft. capacity, without side loader, 2 bag capacity or more; mixer, with side loader, regardless of size; pug mill operator; pump, sump-self-powered, automatic controlled over 2" during use in connection with construction work; sweeper, street; welding machine, one over 400 amp.; winch operating from truck; scissor lift (used for hoisting); tractor, small wheel type 50 h.p. & under with grader blade & similar equipment; Oiler on dredge and on truck crane.

GROUP 4: Boat operator-outboard motor (job site); conveyor (such as con-vay-it) regardless of how used; sweeper, floor

HOURLY PREMIUMS:

Backhoe, hydraulic	
2 cu. yds. or under without oiler	\$2.00
Certified Crane Operator	1.50
Certified Hazardous Material Operator	1.50
Crane, climbing (such as Linden)	.50
Crane, pile driving and extracting	.50
Crane, with boom (including jib) over 100' (from pin to pin) add \$.01 per foot to maximum of	4.00
Crane, using rock socket tool	.50
Derrick, diesel, gas or electric, hoisting material and erecting steel (150' or more above ground)	.50
Dragline, 7 cu. yds. and over	.50
Hoist, three (3) or more drums in use	.50
Scoop, Tandem	.50
Shovel, power - 7 cu. yds. or more	.50
Tractor, tandem crawler	.50
Tunnel, man assigned to work in tunnel or tunnel shaft	.50
Wrecking, when machine is working on second floor or higher	.50

IRON0010-012 04/01/2023

Rates Fringes

Ironworkers:

ANDREW, BARTON, BENTON,

CAMDEN, CEDAR, CHARITON,
CHRISTIAN, COOPER, DADE,
DALLAS, DAVIESS, DE KALB,
GENTRY, GREENE, GRUNDY,
HARRISON, HICKORY, HOLT,
HOWARD, LACLEDE, LINN,
LIVINGSTON, MERCER,
MONITEAU, MORGAN, NODAWAY,
PETTIS, POLK, PUTNAM,
RANDLOPH, ST. CLAIR,
SULLIVAN, TANEY, VERNON,
WEBSTER, WRIGHT and WORTH
Counties and portions of
ADAIR, BOONE, MACON,
MILLER and RANDOLPH
Counties.....\$ 33.50 33.38
ATCHISON, BATES, BUCHANAN,
CALDWELL, CARROLL, CASS,
CLAY, CLINTON, HENRY,
JACKSON, JOHNSON,
LAFAYETTE, PETTIS, PLATTE,
SALINE, AND RAY COUNTIES....\$ 36.50 33.38

IRON0321-002 08/01/2023

DOUGLAS, HOWELL and OZARK COUNTIES

	Rates	Fringes
Ironworker.....	\$ 27.00	20.96

IRON0396-004 08/02/2023

ST. LOUIS (City and County), ST. CHARLES, JEFFERSON, IRON,
FRANKLIN, LINCOLN, WARREN, WASHINGTON, ST. FRANCOIS, STE.
GENEVIEVE, and REYNOLDS Counties; and portions of MADISON,
PERRY, BOLLINGER, WAYNE, and CARTER Counties

	Rates	Fringes
Ironworker.....	\$ 40.37	30.55

IRON0396-009 08/02/2023

AUDRAIN, CALLAWAY, COLE, CRAWFORD, DENT, GASCONADE, MARIES,
MONTGOMERY, OSAGE, PHELPS, PIKE, PULASKI, TEXAS and WRIGHT
Counties; and portions of BOONE, CAMDEN, DOUGLAS, HOWELL,
LACLEDE, MILLER, MONROE, OREGON, SHANNON and RALLS Counties

	Rates	Fringes
Ironworker.....	\$ 40.37	30.55

IRON0577-005 06/01/2023

ADAIR, CLARK, KNOX, LEWIS, MACON, MARION, MONROE, RALLS,
SCHUYLER, SCOTLAND, AND SHELBY COUNTIES

	Rates	Fringes
Ironworker.....	\$ 31.55	25.05

IRON0584-004 06/01/2023

BARRY, JASPER, LAWRENCE, MCDONALD, NEWTON AND STONE Counties

	Rates	Fringes
Ironworkers:.....	\$ 29.00	16.20

IRON0782-003 08/01/2023

CAPE GIRARDEAU, MISSISSIPPI, NEW MADRID, SCOTT, & STODDARD Counties; and portions of BOLLINGER, BUTLER, CARTER, DUNKLIN, MADISON, PEMISCOT, PERRY, RIPLEY, and WAYNE Counties

	Rates	Fringes
Ironworkers:		
Locks, Dams, Bridges and other major work on the Mississippi and Ohio River only.....	\$ 38.77	29.51
All Other Work.....	\$ 33.47	24.12

LAB00042-003 03/01/2023

ST. LOUIS (City and County)

	Rates	Fringes
LABORER		
Plumber Laborer.....	\$ 36.65	17.12

LAB00042-005 03/01/2023

ST. LOUIS (City and County)

	Rates	Fringes
LABORER		
Dynamiter, Powderman.....	\$ 36.65	17.12
Laborers, Flaggers.....	\$ 36.65	17.12
Wrecking.....	\$ 36.65	17.12

LAB00110-005 05/01/2023

Jefferson and Washington Counties

	Rates	Fringes
LABORER (Jefferson County)		
GROUP 1.....	\$ 35.49	15.62
GROUP 2.....	\$ 36.09	15.62
LABORER (Washington County)		
GROUP 1.....	\$ 32.98	15.62
GROUP 2.....	\$ 32.98	15.62

LABORERS CLASSIFICATIONS

GROUP 1 - General laborer-flagman, carpenter tenders; salamander Tenders; Dump Man; Ticket Takers; loading trucks under bins, hoppers, and conveyors; track man; cement handler; dump man on earth fill; georgie buggy man; material batch hopper man; spreader on asphalt machine; material mixer man (except on manholes); coffer dams;

riprap pavers rock, block or brick; scaffolds over ten feet not self-supported from ground up; skip man on concrete paving; wire mesh setters on concrete paving; all work in connection with sewer, water, gas, gasoling, oil, drainage pipe, conduit pipe, tile and duct lines and all other pipe lines; power tool operator; all work in connection with hydraulic or general dredging operations; form setters, puddlers (paving only); straw blower nozzleman; asphalt plant platform man; chuck tender; crusher feeder; men handling creosote ties or creosote materials; men working with and handling epoxy material; topper of standing trees; feeder man on wood pulverizers, board and willow mat weavers and cabelee tiers on river work; deck hands; pile dike and revetment work; all laborers working on underground tunnels less than 25 ft. where compressed air is not used; abutement and pier hole men working six (6) ft. or more below ground; men working in coffer dams for bridge piers and footing in the river; barco tamper; jackson or any other similar tamp; cutting torch man; liners, curb, gutters, ditch lines; hot mastic kettlemen; hot tar applicator; hand blade operator; mortar men or brick or block manholes; rubbing concrete, air tool operator under 65 lbs.; caulker and lead man; chain or concrete saw under 15 h.p.; signal Gan; Guard rail and sign erectors.

GROUP 2 - Skilled laborers - Vibrator man; asphalt raker; head pipe layer on sewer work; batterboard man on pipe and ditch work; cliff scalers working from bosun's chairs; scaffolds or platforms on dams or power plants over 10 ft. high; air tool operator over 65 lbs.; stringline man on concrete paving; sandblast man; laser beam man; wagon drill; churn drill; air track drill and all other similar type drills, gunite nozzle man; pressure grout man; screed man on asphalt; concrete saw 15 h.p. and over; grade checker; strigline man on electronic grade control; manhole builder; dynamite man; powder man; welder; tunnel man; waterblaster - 1000 psi or over; asbestos and/or hazardous waste removal and/or disposal

 LAB00579-005 05/01/2023

	Rates	Fringes
LABORER (ANDREW, ATCHISON, BUCHANAN, CALDWELL, CLINTON, DAVIESS, DEKALB, GENTRY, GRUNDY, HARRISON, HOLT, LIVINGSTON, MERCER, NODAWAY and WORTH COUNTIES.)		
GROUP 1.....	\$ 29.04	16.59
GROUP 2.....	\$ 29.39	16.59
LABORER (BARRY, BARTON, BATES, BENTON, CAMDEN, CARROLL, CEDAR, CHRISTIAN, DADE, DALLAS, DOUGLAS, GREENE, HENRY. HICKORY, JASPER, JOHNSON, LACLEDE, LAWRENCE, MCDONALD, MORGAN, NEWTON, OZARK, PETTIS, POLK, ST.CLAIR, SALINE, STONE, TANEY, VERNON, WEBSTER and WRIGHT COUNTIES)		
GROUP 1.....	\$ 28.23	15.60

GROUP 2.....	\$ 28.78	15.60
LABORER (LAFAYETTE COUNTY)		
GROUP 1.....	\$ 29.78	15.85
GROUP 2.....	\$ 30.13	15.85

LABORERS CLASSIFICATIONS

GROUP 1: General Laborers - Carpenter tenders; salamander tenders; loading trucks under bins; hoppers & conveyors; track men & all other general laborers; air tool operator; cement handler-bulk or sack; dump man on earth fill; georgie buggy man; material batch hopper man; material mixer man (except on manholes); coffer dams; riprap pavers - rock, block or brick; signal man; scaffolds over ten feet not self-supported from ground up; skipman on concrete paving; wire mesh setters on concrete paving; all work in connection with sewer, water, gas, gasoline, oil drainage pipe, conduit pipe, tile and duct lines and all other pipe lines; power tool operator, all work in connection with hydraulic or general dredging operations; puddlers (paving only); straw blower nozzle man; asphalt plant platform man; chuck tender; crusher feeder; men handling creosote ties or creosote materials; men working with and handling epoxy material or materials (where special protection is required); rubbing concrete; topper of standing trees; batter board man on pipe and ditch work; feeder man on wood pulverizers; board and willow mat weavers and cable tiers on river work; deck hands; pile dike and revetment work; all laborers working on underground tunnels less than 25 feet where compressed air is not used; abutment and pier hole men working six (6) feet or more below ground; men working in coffer dams for bridge piers and footings in the river; ditchliners; pressure groutmen; caulker; chain or concrete saw; cliffscalers working from scaffolds, bosuns' chairs or platforms on dams or power plants over (10) feet above ground; mortarmen on brick or block manholes; toxic and hazardous waste work.

GROUP 2: Skilled Laborers - Head pipe layer on sewer work; laser beam man; Jackson or any other similar tamp; cutting torch man; form setters; liners and stringline men on concrete paving, curb, gutters; hot mastic kettleman; hot tar applicator; sandblasting and gunite nozzle men; air tool operator in tunnels; screed man on asphalt machine; asphalt raker; barco tamper; churn drills; air track drills and all similar drills; vibrator man; stringline man for electronic grade control; manhole builders-brick or block; dynamite and powder men; grade checker.

LAB00660-004 05/01/2023

Clark, Knox, Lewis, Marion, Pike, Ralls, Scotland, Shelby Counties

	Rates	Fringes
LABORER		
GROUP 1.....	\$ 32.98	15.62
GROUP 2.....	\$ 32.98	15.62

LABORERS CLASSIFICATIONS

GROUP 1 - General laborer-flagman, carpenter tenders;

salamander Tenders; Dump Man; Ticket Takers; loading trucks under bins, hoppers, and conveyors; track man; cement handler; dump man on earth fill; georgie buggy man; material batch hopper man; spreader on asphalt machine; material mixer man (except on manholes); coffer dams; riprap pavers rock, block or brick; scaffolds over ten feet not self-supported from ground up; skip man on concrete paving; wire mesh setters on concrete paving; all work in connection with sewer, water, gas, gasoling, oil, drainage pipe, conduit pipe, tile and duct lines and all other pipe lines; power tool operator; all work in connection with hydraulic or general dredging operations; form setters, puddlers (paving only); straw blower nozzle man; asphalt plant platform man; chuck tender; crusher feeder; men handling creosote ties or creosote materials; men working with and handling epoxy material; topper of standing trees; feeder man on wood pulverizers, board and willow mat weavers and cabelee tiers on river work; deck hands; pile dike and revetment work; all laborers working on underground tunnels less than 25 ft. where compressed air is not used; abutment and pier hole men working six (6) ft. or more below ground; men working in coffer dams for bridge piers and footing in the river; barco tamper; jackson or any other similar tamp; cutting torch man; liners, curb, gutters, ditch lines; hot mastic kettlemen; hot tar applicator; hand blade operator; mortar men or brick or block manholes; rubbing concrete, air tool operator under 65 lbs.; caulker and lead man; chain or concrete saw under 15 h.p.; signal Gan; Guard rail and sign erectors.

GROUP 2 - Skilled laborers - Vibrator man; asphalt raker; head pipe layer on sewer work; batterboard man on pipe and ditch work; cliff scalers working from bosun's chairs; scaffolds or platforms on dams or power plants over 10 ft. high; air tool operator over 65 lbs.; stringline man on concrete paving; sandblast man; laser beam man; wagon drill; churn drill; air track drill and all other similar type drills, gunite nozzle man; pressure grout man; screed man on asphalt; concrete saw 15 h.p. and over; grade checker; strigline man on electronic grade control; manhole builder; dynamite man; powder man; welder; tunnel man; waterblaster - 1000 psi or over; asbestos and/or hazardous waste removal and/or disposal

 LAB00660-006 03/01/2023

Lincoln, Montgomery, St Charles and Warren Counties

	Rates	Fringes
LABORER (Common or General).....	\$ 36.91	15.62

 LAB00662-001 05/01/2023

Callaway, Cole, Miller and Moniteau Counties

	Rates	Fringes
LABORER		
GROUP 1.....	\$ 32.98	15.62
GROUP 2.....	\$ 32.98	15.62

LABORERS CLASSIFICATIONS

GROUP 1 - General laborer-flagman, carpenter tenders; salamander Tenders; Dump Man; Ticket Takers; loading trucks under bins, hoppers, and conveyors; track man; cement handler; dump man on earth fill; georgie buggy man; material batch hopper man; spreader on asphalt machine; material mixer man (except on manholes); coffer dams; riprap pavers rock, block or brick; scaffolds over ten feet not self-supported from ground up; skip man on concrete paving; wire mesh setters on concrete paving; all work in connection with sewer, water, gas, gasoling, oil, drainage pipe, conduit pipe, tile and duct lines and all other pipe lines; power tool operator; all work in connection with hydraulic or general dredging operations; form setters, puddlers (paving only); straw blower nozzle man; asphalt plant platform man; chuck tender; crusher feeder; men handling creosote ties or creosote materials; men working with and handling epoxy material; topper of standing trees; feeder man on wood pulverizers, board and willow mat weavers and cabelee tiers on river work; deck hands; pile dike and revetment work; all laborers working on underground tunnels less than 25 ft. where compressed air is not used; abutment and pier hole men working six (6) ft. or more below ground; men working in coffer dams for bridge piers and footing in the river; barco tamper; jackson or any other similar tamp; cutting torch man; liners, curb, gutters, ditch lines; hot mastic kettlemen; hot tar applicator; hand blade operator; mortar men or brick or block manholes; rubbing concrete, air tool operator under 65 lbs.; caulker and lead man; chain or concrete saw under 15 h.p.; signal Gan; Guard rail and sign erectors.

GROUP 2 - Skilled laborers - Vibrator man; asphalt raker; head pipe layer on sewer work; batterboard man on pipe and ditch work; cliff scalers working from bosun's chairs; scaffolds or platforms on dams or power plants over 10 ft. high; air tool operator over 65 lbs.; stringline man on concrete paving; sandblast man; laser beam man; wagon drill; churn drill; air track drill and all other similar type drills, gunite nozzle man; pressure grout man; screed man on asphalt; concrete saw 15 h.p. and over; grade checker; strigline man on electronic grade control; manhole builder; dynamite man; powder man; welder; tunnel man; waterblaster - 1000 psi or over; asbestos and/or hazardous waste removal and/or disposal

 LAB00663-002 04/01/2023

CASS, CLAY, JACKSON, PLATTE AND RAY COUNTIES

	Rates	Fringes
LABORER		
GROUP 1.....	\$ 34.15	17.06
GROUP 2.....	\$ 35.36	17.06

LABORERS CLASSIFICATIONS

GROUP 1: General laborers, Carpenter tenders, salamander tenders, loading trucks under bins, hoppers and conveyors, track men and all other general laborers, air tool operator, cement handler (bulk or sack), chain or concrete saw, deck hands, dump man on earth fill, Georgie Buggies

man, material batch hopper man, scale man, material mixer man (except on manholes), coffer dams, abutments and pier hole men working below ground, riprap pavers rock, black or brick, signal man, scaffolds over ten feet not self-supported from ground up, skipman on concrete paving, wire mesh setters on concrete paving, all work in connection with sewer, water, gas, gasoling, oil, drainage pipe, conduit pipe, tile and duct lines and all other pipelines, power tool operator, all work in connection with hydraulic or general dredging operations, straw blower nozzle man, asphalt plant platform man, chuck tender, crusher feeder, men handling creosote ties on creosote materials, men working with and handling epoxy material or materials (where special protection is required), topper of standing trees, batter board man on pipe and ditch work, feeder man on wood pulverizers, board and willow mat weavers and cable tiers on river work, deck hands, pile dike and revetment work, all laborers working on underground tunnels less than 25 feet where compressed air is not used, abutment and pier hole men working six (6) feet or more below ground, men working in coffer dams for bridge piers and footings in the river, ditchliners, pressure groutmen, caulker and chain or concrete saw, cliffscalers working from scaffolds, bosuns' chairs or platforms on dams or power plants over (10) feet above ground, mortarmen on brick or block manholes, signal man.

GROUP 2: Skilled Laborer - spreader or screed man on asphalt machine, asphalt raker, grade checker, vibrator man, concrete saw over 5 hp., laser beam man, barco tamper, jackson or any other similar tamp, wagon driller, churn drills, air track drills and other similar drills, cutting torch man, form setters, liners and stringline men on concrete paving, curb, gutters and etc., hot mastic kettleman, hot tar applicator, hand blade operators, mortar men on brick or block manholes, sand blasting and gunnite nozzle men, rubbing concrete, air tool operator in tunnels, head pipe layer on sewer work, manhole builder (brick or block), dynamite and powder men.

 LAB00840-011 05/01/2023

Crawford, Dent, Franklin, Gasconade, Howell, Maries, Oregon, Osage, Phelps, Pulaski, Shannon and Texas Counties

	Rates	Fringes
LABORER (Crawford, Dent, Gasconade, Howell, Maries, Oregon, Osage, Phelps, Pulaski, Shannon and Texas Counties)		
GROUP 1.....	\$ 32.98	15.62
GROUP 2.....	\$ 32.98	15.62
LABORER (Franklin County)		
GROUP 1.....	\$ 35.44	15.62
GROUP 2.....	\$ 36.04	15.62

LABORERS CLASSIFICATIONS

GROUP 1 - General laborer-flagman, carpenter tenders; salamander Tenders; Dump Man; Ticket Takers; loading trucks under bins, hoppers, and conveyors; track man; cement

handler; dump man on earth fill; georgie buggy man; material batch hopper man; spreader on asphalt machine; material mixer man (except on manholes); coffer dams; riprap pavers rock, block or brick; scaffolds over ten feet not self-supported from ground up; skip man on concrete paving; wire mesh setters on concrete paving; all work in connection with sewer, water, gas, gasoling, oil, drainage pipe, conduit pipe, tile and duct lines and all other pipe lines; power tool operator; all work in connection with hydraulic or general dredging operations; form setters, puddlers (paving only); straw blower nozzle man; asphalt plant platform man; chuck tender; crusher feeder; men handling creosote ties or creosote materials; men working with and handling epoxy material; topper of standing trees; feeder man on wood pulverizers, board and willow mat weavers and cabelee tiers on river work; deck hands; pile dike and revetment work; all laborers working on underground tunnels less than 25 ft. where compressed air is not used; abutment and pier hole men working six (6) ft. or more below ground; men working in coffer dams for bridge piers and footing in the river; barco tamper; jackson or any other similar tamp; cutting torch man; liners, curb, gutters, ditch lines; hot mastic kettlemen; hot tar applicator; hand blade operator; mortar men or brick or block manholes; rubbing concrete, air tool operator under 65 lbs.; caulker and lead man; chain or concrete saw under 15 h.p.; signal Gan; Guard rail and sign erectors.

GROUP 2 - Skilled laborers - Vibrator man; asphalt raker; head pipe layer on sewer work; batterboard man on pipe and ditch work; cliff scalers working from bosun's chairs; scaffolds or platforms on dams or power plants over 10 ft. high; air tool operator over 65 lbs.; stringline man on concrete paving; sandblast man; laser beam man; wagon drill; churn drill; air track drill and all other similar type drills, gunite nozzle man; pressure grout man; screed man on asphalt; concrete saw 15 h.p. and over; grade checker; strigline man on electronic grade control; manhole builder; dynamite man; powder man; welder; tunnel man; waterblaster - 1000 psi or over; asbestos and/or hazardous waste removal and/or disposal

 LAB00955-012 05/01/2023

Adair, Audrain, Boone, Chariton, Cooper, Howard, Linn, Macon, Monroe, Putnam, Randolph, Schuyler and Sullivan Counties

	Rates	Fringes
LABORER		
GROUP 1.....	\$ 32.98	15.62
GROUP 2.....	\$ 32.98	15.62

LABORERS CLASSIFICATIONS

GROUP 1 - General laborer-flagman, carpenter tenders; salamander Tenders; Dump Man; Ticket Takers; loading trucks under bins, hoppers, and conveyors; track man; cement handler; dump man on earth fill; georgie buggy man; material batch hopper man; spreader on asphalt machine; material mixer man (except on manholes); coffer dams; riprap pavers rock, block or brick; scaffolds over ten feet

not self-supported from ground up; skip man on concrete paving; wire mesh setters on concrete paving; all work in connection with sewer, water, gas, gasoling, oil, drainage pipe, conduit pipe, tile and duct lines and all other pipe lines; power tool operator; all work in connection with hydraulic or general dredging operations; form setters, puddlers (paving only); straw blower nozzleman; asphalt plant platform man; chuck tender; crusher feeder; men handling creosote ties or creosote materials; men working with and handling epoxy material; topper of standing trees; feeder man on wood pulverizers, board and willow mat weavers and cabelee tiers on river work; deck hands; pile dike and revetment work; all laborers working on underground tunnels less than 25 ft. where compressed air is not used; abutement and pier hole men working six (6) ft. or more below ground; men working in coffer dams for bridge piers and footing in the river; barco tamper; jackson or any other similar tamp; cutting torch man; liners, curb, gutters, ditch lines; hot mastic kettlemen; hot tar applicator; hand blade operator; mortar men or brick or block manholes; rubbing concrete, air tool operator under 65 lbs.; caulker and lead man; chain or concrete saw under 15 h.p.; signal Gan; Guard rail and sign erectors.

GROUP 2 - Skilled laborers - Vibrator man; asphalt raker; head pipe layer on sewer work; batterboard man on pipe and ditch work; cliff scalers working from bosun's chairs; scaffolds or platforms on dams or power plants over 10 ft. high; air tool operator over 65 lbs.; stringline man on concrete paving; sandblast man; laser beam man; wagon drill; churn drill; air track drill and all other similar type drills, gunite nozzle man; pressure grout man; screed man on asphalt; concrete saw 15 h.p. and over; grade checker; strigline man on electronic grade control; manhole builder; dynamite man; powder man; welder; tunnel man; waterblaster - 1000 psi or over; asbestos and/or hazardous waste removal and/or disposal

 LAB01104-005 05/01/2023

Bollinger, Butler, Cape Girardeau, Carter, Dunklin, Iron, Madison, Mississippi, New Madrid, Pemiscot, Perry, Reynolds, Ripley, Scott, St Francois, Ste Genevieve, Stoddard and Wayne Counties

	Rates	Fringes
LABORER		
GROUP 1.....	\$ 32.98	15.62
GROUP 2.....	\$ 32.98	15.62

LABORERS CLASSIFICATIONS

GROUP 1 - General laborer-flagman, carpenter tenders; salamander Tenders; Dump Man; Ticket Takers; loading trucks under bins, hoppers, and conveyors; track man; cement handler; dump man on earth fill; georgie buggy man; material batch hopper man; spreader on asphalt machine; material mixer man (except on manholes); coffer dams; riprap pavers rock, block or brick; scaffolds over ten feet not self-supported from ground up; skip man on concrete paving; wire mesh setters on concrete paving; all work in

connection with sewer, water, gas, gasoling, oil, drainage pipe, conduit pipe, tile and duct lines and all other pipe lines; power tool operator; all work in connection with hydraulic or general dredging operations; form setters, puddlers (paving only); straw blower nozzleman; asphalt plant platform man; chuck tender; crusher feeder; men handling creosote ties or creosote materials; men working with and handling epoxy material; topper of standing trees; feeder man on wood pulverizers, board and willow mat weavers and cabelee tiers on river work; deck hands; pile dike and revetment work; all laborers working on underground tunnels less than 25 ft. where compressed air is not used; abutement and pier hole men working six (6) ft. or more below ground; men working in coffer dams for bridge piers and footing in the river; barco tamper; jackson or any other similar tamp; cutting torch man; liners, curb, gutters, ditch lines; hot mastic kettlemen; hot tar applicator; hand blade operator; mortar men or brick or block manholes; rubbing concrete, air tool operator under 65 lbs.; caulker and lead man; chain or concrete saw under 15 h.p.; signal Gan; Guard rail and sign erectors.

GROUP 2 - Skilled laborers - Vibrator man; asphalt raker; head pipe layer on sewer work; batterboard man on pipe and ditch work; cliff scalers working from bosun's chairs; scaffolds or platforms on dams or power plants over 10 ft. high; air tool operator over 65 lbs.; stringline man on concrete paving; sandblast man; laser beam man; wagon drill; churn drill; air track drill and all other similar type drills, gunite nozzle man; pressure grout man; screed man on asphalt; concrete saw 15 h.p. and over; grade checker; strigline man on electronic grade control; manhole builder; dynamite man; powder man; welder; tunnel man; waterblaster - 1000 psi or over; asbestos and/or hazardous waste removal and/or disposal

 PAIN002-002 09/01/2007

CLARK, FRANKLIN, JEFFERSON, LEWIS, LINCOLN, MARION, PIKE, RALLS, ST. CHARLES, ST. LOUIS (CITY & COUNTY), AND WARREN COUNTIES

	Rates	Fringes
Painters:		
Brush and Roller; Taper.....	\$ 28.61	10.24
High work over 60 feet.....	\$ 29.11	10.24
Lead Abatement.....	\$ 29.36	10.24
Pressure Roller; High work under 60 ft.....	\$ 28.86	10.24
Spray & Abrasive Blasting; Water Blasting (Over 5000 PSI).....	\$ 30.61	10.24
Taper (Ames Tools & Bazooka).....	\$ 30.21	10.24

 PAIN002-006 04/01/2023

ADAIR, AUDRAIN, BOONE, CALLAWAY, CHARITON, COLE, GASCONADE, HOWARD, KNOX, LINN, MACON, MONROE, MONTGOMERY, OSAGE, PUTNAM, RANDOLPH, SCHUYLER, SCOTLAND, SHELBY AND SULLIVAN COUNTIES and the City of Booneville.

	Rates	Fringes
Painters:		
Bridges, Dams, Locks or Powerhouses.....	\$ 28.49	15.03
Brush and Roll; Taping, Paperhanging.....	\$ 26.49	15.03
Epoxy or Any Two Part Coating; Sandblasting; Stage or other Aerial Work - Platforms over 50 feet high; Lead Abatement.....	\$ 27.49	15.03
Spray; Structural Steel (over 50 feet).....	\$ 27.49	15.03
Tapers using Ames or Comparable Tools.....	\$ 27.24	15.03

PAIN0003-004 04/01/2019

CASS, CLAY, CLINTON, JACKSON, JOHNSON, LAFAYETTE, PLATTE & RAY COUNTIES

	Rates	Fringes
Painters:		
Bridgeman; Lead Abatement; Sandblast; Storage Bin & Tanks.....	\$ 33.41	17.76
Brush & Roller.....	\$ 30.54	17.76
Drywall.....	\$ 31.74	17.76
Paper Hanger.....	\$ 31.04	17.76
Stageman; Beltman; Steelman; Elevator Shaft; Bazooka, Boxes and Power Sander; Sprayman; Dipping...	\$ 32.41	17.76
Steeplejack.....	\$ 36.98	17.76

PAIN0003-011 04/01/2019

BATES, BENTON, CALDWELL, CARROLL, COOPER, DAVIESS, GRUNDY, HARRISON, HENRY, LIVINGSTON, MERCER, MONITEAU, MORGAN, PETTIS & SALINE COUNTIES

	Rates	Fringes
Painters:		
Bridgeman; Lead Abatement; Sandblast; Storage Bin & Tanks.....	\$ 26.73	17.76
Brush & Roller.....	\$ 24.43	17.76
Drywall.....	\$ 25.39	17.76
Paper Hanger.....	\$ 24.83	17.76
Stageman; Beltman; Steelman; Elevator Shaft; Bazooka, Boxes and Power Sander; Sprayman; Dipping...	\$ 26.35	17.76
Steeplejack.....	\$ 29.58	17.76

PAIN0203-001 04/01/2012

BARRY, BARTON, CEDAR, CHRISTIAN, DADE, DALLAS, DOUGLAS, GREENE,

HICKORY, HOWELL, JASPER, LAWRENCE, MCDONALD, NEWTON, OZARK,
POLK, ST. CLAIR, STONE, TANEY, VERNON, WEBSTER, and WRIGHT
COUNTIES

	Rates	Fringes
Painters:		
Finisher.....	\$ 20.18	11.33
Painter.....	\$ 19.75	11.76
Sandblaster, High Man, Spray Man, Vinyl Hanger, Tool Operator.....	\$ 21.18	11.33

PAIN1185-008 04/01/2023

CAMDEN, CRAWFORD, DENT, LACLEDE, MARIES, MILLER, PHELPS,
PULASKI AND TEXAS COUNTIES

	Rates	Fringes
Painters:		
Brush and Roller.....	\$ 31.83	15.13
Floor Work.....	\$ 32.83	15.13
Lead Abatement.....	\$ 32.83	15.13
Spray.....	\$ 32.83	15.13
Structural Steel, Sandblasting and All Tank Work.....	\$ 33.83	15.13
Taping, Paperhanging.....	\$ 32.83	15.13

PAIN1292-002 09/01/2022

BOLLINGER, BUTLER, CAPE GIRARDEAU, CARTER, DUNKLIN,
MISSISSIPPI, NEW MADRID, OREGON, PEMISCOT, PERRY, REYNOLDS,
RIPLEY, SCOTT, SHANNON, STODDARD and WAYNE COUNTIES

	Rates	Fringes
Painters:		
Bridges, Stacks & Tanks.....	\$ 33.93	15.36
Brush & Roller.....	\$ 29.58	15.36
Spray & Abrasive Blasting; Waterblasting (over 5000 PSI).....	\$ 31.58	15.36

Height Rates (All Areas):
Over 60 ft. \$0.50 per hour.
Under 60 ft. \$0.25 per hour.

PAIN1292-003 09/01/2022

IRON, MADISON, ST. FRANCOIS, STE. GENEVIEVE and WASHINGTON
COUNTIES

	Rates	Fringes
Painters:		
Bridges, Stacks & Tanks.....	\$ 33.93	15.36
Brush & Roller.....	\$ 29.58	15.36
Spray & Abrasive Blasting;		

Waterblasting (Over 5000 PSI).....\$ 31.58 15.36

Height Rates (All Areas):
Over 60 ft. \$0.50 per hour
Under 60 ft. \$0.25 per hour.

PAIN2012-001 04/01/2023

ANDREW, ATCHISON, BUCHANAN, DE KALB, GENTRY, HOLT, NODAWAY & WORTH COUNTIES

Rates Fringes

Painters:

Brush & Roller.....\$ 34.22 19.13
Sandblaster.....\$ 38.46 19.13
Steeplejack.....\$ 42.03 19.13

PLAS0518-006 03/01/2023

BARRY, BARTON, CEDAR, CHRISTIAN, DADE, DALLAS, DOUGLAS, GREENE, HICKORY, JASPER, LACLEDE, LAWRENCE, MCDONALD, NEWTON, OZARK, POLK, ST. CLAIR, STONE, TANEY, VERNON, WEBSTER, AND WRIGHT COUNTIES

Rates Fringes

CEMENT MASON/CONCRETE FINISHER...\$ 26.57 12.43

PLAS0518-007 04/01/2023

CASS (Richards-Gebaur AFB only), CLAY, JACKSON, PLATTE AND RAY COUNTIES

Rates Fringes

Cement Masons:.....\$ 36.57 18.30

PLAS0518-011 04/01/2023

ANDREW, ATCHISON, BATES, BUCHANNAN, CLINTON, DEKALB, GENTRY, HENRY, HOLT, JOHNSON, LAFAYETTE, NODAWAY & WORTH COUNTIES

Rates Fringes

CEMENT MASON/CONCRETE FINISHER...\$ 36.03 20.50

PLAS0527-001 04/01/2023

Rates Fringes

CEMENT MASON

FRANKLIN, LINCOLN AND WARREN COUNTIES.....\$ 37.29 20.23
JEFFERSON, ST. CHARLES COUNTIES AND ST. LOUIS (City and County).....\$ 38.46 20.13

PLAS0527-004 06/01/2023

CRAWFORD, DENT, IRON, MADISON, MARION, PHELPS, PIKE, PULASKI,
RALLS, REYNOLDS, ST. FRANCOIS, STE. GENEVIEVE, SHANNON, TEXAS,
WASHINGTON COUNTIES

	Rates	Fringes
CEMENT MASON.....	\$ 32.00	19.72

PLAS0908-001 05/01/2023		

BOLLINGER, BUTLER, CAPE GIRARDEAU, CARTER, DUNKLIN, HOWELL,
MISSISSIPPI, NEW MADRID, OREGON, PEMISCOT, PERRY, RIPLEY,
SCOTT, STODDARD, AND WAYNE COUNTIES

	Rates	Fringes
CEMENT MASON.....	\$ 32.30	18.38

PLAS0908-005 05/01/2023		

BENTON, CALDWELL, CALLAWAY, CAMDEN, CARROLL, COLE, DAVIESS,
GASCONADE, GRUNDY, HARRISON, LIVINGSTON, MACON, MARIES, MERCER,
MILLER, MONTGOMERY, MORGAN, OSAGE, PETTIS & SALINE COUNTIES

	Rates	Fringes
CEMENT MASON.....	\$ 32.30	18.38

PLUM0008-003 06/01/2023		

CASS, CLAY, JACKSON, JOHNSON, AND PLATTE COUNTIES

	Rates	Fringes
Plumbers.....	\$ 54.28	23.79

PLUM0008-017 06/01/2023		

BATES, BENTON, CARROLL, HENRY, LAFAYETTE, MORGAN, PETTIS, RAY,
ST. CLAIR, SALINE AND VERNON COUNTIES

	Rates	Fringes
Plumbers.....	\$ 54.28	23.79

PLUM0045-003 08/01/2023		

ANDREW, ATCHISON, BUCHANAN, CALDWELL, CLINTON, DAVIESS, DEKALB,
GENTRY, HARRISON, HOLT, NODAWAY AND WORTH COUNTIES

	Rates	Fringes
Plumbers and Pipefitters.....	\$ 44.35	26.05

PLUM0178-003 11/01/2023		

BARRY, CEDAR, CHRISTIAN, DADE, DALLAS, DOUGLAS, GREENE,
HICKORY, LACLEDE, LAWRENCE, POLK, STONE, TANEY, WEBSTER AND
WRIGHT COUNTIES

	Rates	Fringes
Plumbers and Pipefitters.....	\$ 37.15	15.42

PLUM0178-006 11/01/2022

BARTON, JASPER, MCDONALD AND NEWTON COUNTIES

	Rates	Fringes
Plumbers and Pipefitters		
Projects \$750,000 & under...	\$ 32.78	15.32
Projects over \$750,000.....	\$ 35.75	15.32

PLUM0533-004 06/01/2023

BATES, BENTON, CARROLL, CASS, CLAY, HENRY, HICKORY, JACKSON, JOHNSON, LAFAYETTE, MORGAN, PETTIS, PLATTE, RAY, SALINE, ST. CLAIR AND VERNON COUNTIES

	Rates	Fringes
Pipefitters.....	\$ 53.56	24.70

PLUM0562-004 07/01/2023

ADAIR, AUDRAIN, BOLLINGER, BOONE, BUTLER, CALLAWAY, CAMDEN, CAPE GIRARDEAU, CARTER, CHARITON, CLARK, COLE, COOPER, CRAWFORD, DENT, DUNKLIN, FRANKLIN, GASCONADE, GRUNDY, HOWARD, HOWELL, IRON, JEFFERSON, KNOX, LEWIS, LINCOLN, LINN, LIVINGSTON, MACON, MADISON, MARIES, MARION, MERCER, MILLER, MISSISSIPPI, MONITEAU, MONROE, MONTGOMERY, NEW MADRID, OREGON, OSAGE, PEMISCOTT, PERRY, PHELPS, PIKE, PULASKI, PUTNAM, RALLS, RANDOLPH, REYNOLDS, RIPLEY, ST. CHARLES, ST. FRANCOIS, STE. GENEVIEVE, ST. LOUIS, SCHUYLER, SCOTLAND, SCOTT, SHANNON, SHELBY, STODDARD, SULLIVAN, TEXAS, WARREN, WASHINGTON, AND WAYNE COUNTIES.

	Rates	Fringes
Plumbers and Pipefitters		
Mechanical Contracts		
including all piping and		
temperature control work		
\$7.0 million & under.....	\$ 46.66	21.99
Mechanical Contracts		
including all piping and		
temperature control work		
over \$7.0 million.....	\$ 46.66	21.99

PLUM0562-016 07/01/2023

CAMDEN, COLE, CRAWFORD, FRANKLIN, JEFFERSON, MARIES, MILLER, MONITEAU, OSAGE, PHELPS, PULASKI, ST. CHARLES, ST. LOUIS (City and County), WARREN and WASHINGTON COUNTIES

	Rates	Fringes
Plumbers		
Mechanical Contracts		
including all piping and		

temperature control work \$7.0 million & under.....	\$ 46.66	21.99
Mechanical Contracts including all piping and temperature control work over \$7.0 million.....	\$ 46.66	21.99

TEAM0013-001 05/01/2023

	Rates	Fringes
Truck drivers (ADAIR, BUTLER, CLARK, DUNKIN, HOWELL, KNOX, LEWIS, OREGON, PUTNAM, RIPLEY, SCHUYLER AND SCOTLAND COUNTIES)		
GROUP 1.....	\$ 33.04	15.15
GROUP 2.....	\$ 33.19	15.15
GROUP 3.....	\$ 33.31	15.15
GROUP 4.....	\$ 33.20	15.15
Truck drivers (AUDRAIN, BOLLINGER, BOONE, CALLAWAY, CAPE GIRARDEAU, CARTER, COLE, CRAWFORD, DENT, GASCONADE, IRON, MACON, MADISON, MARIES, MARION, MILLER, MISSISSIPPI, MONROE, MONTGOMERY, NEW MADRID, OSAGE, PEMISCOT, PERRY, PHELPS, PIKE, PULASKI, RALLS, REYNOLDS, ST. FRANCOIS, STE. GENEVIEVE, SCOTT, SHANNON, SHELBY, STODDARD, TEXAS, WASHINGTON AND WAYNE COUNTIES)		
GROUP 1.....	\$ 33.77	15.05
GROUP 2.....	\$ 33.93	15.05
GROUP 3.....	\$ 33.92	15.05
GROUP 4.....	\$ 34.04	15.05
Truck drivers (FRANKLIN, JEFFERSON and ST. CHARLES COUNTIES)		
GROUP 1.....	\$ 36.13	15.15
GROUP 2.....	\$ 36.24	15.15
GROUP 3.....	\$ 36.28	15.15
GROUP 4.....	\$ 36.35	15.15
Truck drivers (LINCOLN and WARREN COUNTIES)		
GROUP 1.....	\$ 34.78	15.15
GROUP 2.....	\$ 34.89	15.15
GROUP 3.....	\$ 35.93	15.15
GROUP 4.....	\$ 35.00	15.15

TRUCK DRIVERS CLASSIFICATIONS:

GROUP 1: Flat Bed Trucks, Single Axle; Station Wagons;
Pickup Trucks; Material Trucks, Single Axle; Tank Wagon,
Single Axle

GROUP 2: Agitator and Transit Mix Trucks

GROUP 3: Flat Bed Trucks, Tandem Axle; Articulated Dump
Trucks; Material Trucks, Tandem Axle; Tank Wagon, Tandem
Axle

GROUP 4: Semi and/or Pole Trailers; Winch, Fork & Steel

Trucks; Distributor Drivers and Operators; Tank Wagon,
 Semi-Trailer; Insley Wagons, Dumpsters, Half-Tracks,
 Speedace, Euclids and other similar equipment; A-Frame and
 Derrick Trucks; Float or Low Boy

 TEAM0056-001 05/01/2020

	Rates	Fringes
Truck drivers (ANDREW, BARTON, BATES, BENTON, CALDWELL, CAMDEN, CARROLL, CEDAR, CHARITON, CHRISTIAN, CLINTON, COOPER, DADE, DALLAS, DAVIESS, DEKALB, DOUGLAS, GREENE, HENRY, HICKORY, HOWARD, JASPER, LACLEDE, LAWRENCE, LINN, LIVINGSTON, MONITEAU, MORGAN, NEWTON, PETTIS, POLK, RANDOLPH, ST. CLAIR, SALINE, VERNON, WEBSTER AND WRIGHT COUNTIES)		
GROUP 1.....	\$ 31.37	14.25
GROUP 2.....	\$ 31.53	14.25
GROUP 3.....	\$ 31.52	14.25
GROUP 4.....	\$ 31.64	14.25
Truck drivers: (ATCHISON, BARRY, GENTRY, GRUNDY, HARRISON, HOLT, MCDONALD, MERCER, NODAWAY, OZARK, STONE, SULLIVAN, TANEY AND WORTH COUNTIES)		
GROUP 1.....	\$ 30.64	14.25
GROUP 2.....	\$ 30.80	14.25
GROUP 3.....	\$ 30.79	14.25
GROUP 4.....	\$ 30.91	14.25
Truck drivers; (BUCHANAN, JOHNSON AND LAFAYETTE COUNTIES)		
GROUP 1.....	\$ 32.58	14.25
GROUP 2.....	\$ 32.69	14.25
GROUP 3.....	\$ 32.73	14.25
GROUP 4.....	\$ 32.80	14.25

TRUCK DRIVER CLASSIFICATIONS

GROUP 1: Flat bed trucks single axle; station wagons; pickup
 trucks; material trucks single axle; tank wagons single
 axle.

GROUP 2: Agitator and transit mix-trucks.

GROUP 3: Flat bed trucks tandem axle; articulated dump
 trucks; material trucks tandem axle; tank wagons tandem
 axle.

GROUP 4: Semi and/or pole trailers; winch, fork & steel
 trucks; distributor drivers & operators; tank wagons semi-
 trailer; insley wagons, dumpsters, half-tracks, speedace,
 euclids & other similar equipment; A-frames and derrick
 trucks; float or low boy.

TEAM0245-001 03/26/2012

BARRY, BARTON, CAMDEN, CEDAR, CHRISTIAN, DALLAS, DENT, DOUGLAS, GREENE, HICKORY, HOWELL, JASPER, LACLEDE, LAWRENCE, MCDONALD, MILLER, NEWTON, OZARK, PHELPS, POLK, PULASKI, SHANNON, STONE, TANEY, TEXAS, VERNON, WEBSTER AND WRIGHT COUNTIES

Rates Fringes

Truck drivers:

Traffic Control Service
Driver.....\$ 20.45 0.00

PAID HOLIDAYS: New Year's Day, Decoration Day, July 4th, Labor Day, Thanksgiving Day, Christmas Day, employee's birthday and 2 personal days.

TEAM0541-001 04/01/2023

CASS, CLAY, JACKSON, PLATTE AND RAY COUNTIES

Rates Fringes

Truck drivers:

GROUP 1.....\$ 35.31 17.55
GROUP 2.....\$ 34.74 17.55
GROUP 3.....\$ 34.22 17.55

TRUCK DRIVERS CLASSIFICATIONS

GROUP 1: Mechanics and Welders, Field; A-Frame Low Boy-Boom ruck Driver.

GROUP 2: Articulated Dump Truck; Insley Wagons: Dump Trucks, Excavating, 5 cu yds and over; Dumpsters; Half-Tracks: Speedace: Euclids & similar excavating equipment Material trucks, Tandem Two teams; Semi-Trailers; Winch trucks-Fork trucks; Distributor Drivers and Operators; Agitator and Transit Mix; Tank Wagon Drivers, Tandem or Semi; One Team; Station Wagons; Pickup Trucks; Material Trucks, Single Axle; Tank Wagon Drivers, Single Axle

GROUP 3: Oilers and Greasers - Field

TEAM0682-002 05/01/2023

ST LOUIS CITY AND COUNTY

Rates Fringes

Truck drivers:

GROUP 1.....\$ 34.37 8.44+a+b+c+d
GROUP 2.....\$ 34.37 8.44+a+b+c+d
GROUP 3.....\$ 34.37 8.44+a+b+c+d

- a. PENSION: 5/1/2012 - \$182.20 per week.
b. HAZMAT PREMIUM: If Hazmat certification on a job site is required by a state or federal agency or requested by project owner or by the employer, employees on that job site shall receive \$1.50 premium pay.

TRUCK DRIVERS CLASSIFICATIONS

GROUP 1 - Pick-up trucks; forklift, single axle; flatbed trucks; job site ambulance, and trucks or trailers of a water level capacity of 11.99 cu. yds. or less

GROUP 2 - Trucks or trailers of a water level capacity of 12.0 cu yds. up to 22.0 cu yds. including euclids, speedace and similar equipment of same capacity and compressors

GROUP 3 - Trucks or trailers of a water level capacity of 22.0 cu. yds & over including euclids, speedace & all floats, flatbed trailers, boom trucks, winch trucks, including small trailers, farm wagons tilt-top trailers, field offices, tool trailers, concrete pumps, concrete conveyors & gasoline tank trailers and truck mounted mobile concrete mixers

FOOTNOTE FOR TRUCK DRIVERS:

c. PAID HOLIDAYS: Christmas Day, Independence Day, Labor Day, Memorial Day, Veterans Day, New Years Day, Thanksgiving Day

d. PAID VACATION: 3 days paid vacation for 600 hours of service in any one contract year; 4 days paid vacation for 800 hours of service in any one contract year; 5 days paid vacation for 1,000 hours of service in any one contract year. When such an employee has completed 3 years of continuous employment with the same employer and then works the above required number of hours, he shall receive double the number of days of vacation specified above. When such an employee has completed 10 years of continuous employment with the same employer and then works the above required number of hours, he shall receive triple the number of days of vacation specified above. When such an employee has completed 15 years of continuous employment with the same employer and then works the above required number of hours, he shall receive 4 times the number of days of vacation specified above.

WELDERS - Receive rate prescribed for craft performing operation to which welding is incidental.

=====
Note: Executive Order (EO) 13706, Establishing Paid Sick Leave for Federal Contractors applies to all contracts subject to the Davis-Bacon Act for which the contract is awarded (and any solicitation was issued) on or after January 1, 2017. If this contract is covered by the EO, the contractor must provide employees with 1 hour of paid sick leave for every 30 hours they work, up to 56 hours of paid sick leave each year. Employees must be permitted to use paid sick leave for their own illness, injury or other health-related needs, including preventive care; to assist a family member (or person who is like family to the employee) who is ill, injured, or has other health-related needs, including preventive care; or for reasons resulting from, or to assist a family member (or person who is like family to the employee) who is a victim of, domestic violence, sexual assault, or stalking. Additional information on contractor requirements and worker protections under the EO is available at

<https://www.dol.gov/agencies/whd/government-contracts>.

Unlisted classifications needed for work not included within the scope of the classifications listed may be added after award only as provided in the labor standards contract clauses (29CFR 5.5 (a) (1) (iii)).

The body of each wage determination lists the classification and wage rates that have been found to be prevailing for the cited type(s) of construction in the area covered by the wage determination. The classifications are listed in alphabetical order of ""identifiers"" that indicate whether the particular rate is a union rate (current union negotiated rate for local), a survey rate (weighted average rate) or a union average rate (weighted union average rate).

Union Rate Identifiers

A four letter classification abbreviation identifier enclosed in dotted lines beginning with characters other than ""SU"" or ""UAVG"" denotes that the union classification and rate were prevailing for that classification in the survey. Example: PLUM0198-005 07/01/2014. PLUM is an abbreviation identifier of the union which prevailed in the survey for this classification, which in this example would be Plumbers. 0198 indicates the local union number or district council number where applicable, i.e., Plumbers Local 0198. The next number, 005 in the example, is an internal number used in processing the wage determination. 07/01/2014 is the effective date of the most current negotiated rate, which in this example is July 1, 2014.

Union prevailing wage rates are updated to reflect all rate changes in the collective bargaining agreement (CBA) governing this classification and rate.

Survey Rate Identifiers

Classifications listed under the ""SU"" identifier indicate that no one rate prevailed for this classification in the survey and the published rate is derived by computing a weighted average rate based on all the rates reported in the survey for that classification. As this weighted average rate includes all rates reported in the survey, it may include both union and non-union rates. Example: SULA2012-007 5/13/2014. SU indicates the rates are survey rates based on a weighted average calculation of rates and are not majority rates. LA indicates the State of Louisiana. 2012 is the year of survey on which these classifications and rates are based. The next number, 007 in the example, is an internal number used in producing the wage determination. 5/13/2014 indicates the survey completion date for the classifications and rates under that identifier.

Survey wage rates are not updated and remain in effect until a new survey is conducted.

Union Average Rate Identifiers

Classification(s) listed under the UAVG identifier indicate that no single majority rate prevailed for those classifications; however, 100% of the data reported for the

classifications was union data. EXAMPLE: UAVG-OH-0010
08/29/2014. UAVG indicates that the rate is a weighted union
average rate. OH indicates the state. The next number, 0010 in
the example, is an internal number used in producing the wage
determination. 08/29/2014 indicates the survey completion date
for the classifications and rates under that identifier.

A UAVG rate will be updated once a year, usually in January of
each year, to reflect a weighted average of the current
negotiated/CBA rate of the union locals from which the rate is
based.

WAGE DETERMINATION APPEALS PROCESS

1.) Has there been an initial decision in the matter? This can
be:

- * an existing published wage determination
- * a survey underlying a wage determination
- * a Wage and Hour Division letter setting forth a position on
a wage determination matter
- * a conformance (additional classification and rate) ruling

On survey related matters, initial contact, including requests
for summaries of surveys, should be with the Wage and Hour
National Office because National Office has responsibility for
the Davis-Bacon survey program. If the response from this
initial contact is not satisfactory, then the process described
in 2.) and 3.) should be followed.

With regard to any other matter not yet ripe for the formal
process described here, initial contact should be with the
Branch of Construction Wage Determinations. Write to:

Branch of Construction Wage Determinations
Wage and Hour Division
U.S. Department of Labor
200 Constitution Avenue, N.W.
Washington, DC 20210

2.) If the answer to the question in 1.) is yes, then an
interested party (those affected by the action) can request
review and reconsideration from the Wage and Hour Administrator
(See 29 CFR Part 1.8 and 29 CFR Part 7). Write to:

Wage and Hour Administrator
U.S. Department of Labor
200 Constitution Avenue, N.W.
Washington, DC 20210

The request should be accompanied by a full statement of the
interested party's position and by any information (wage
payment data, project description, area practice material,
etc.) that the requestor considers relevant to the issue.

3.) If the decision of the Administrator is not favorable, an
interested party may appeal directly to the Administrative
Review Board (formerly the Wage Appeals Board). Write to:

Administrative Review Board
U.S. Department of Labor

200 Constitution Avenue, N.W.
Washington, DC 20210

4.) All decisions by the Administrative Review Board are final.

=====

END OF GENERAL DECISION"



CONTRACTOR NAME: _____

ADDRESS LINE 1: _____

ADDRESS LINE 2: _____

PHONE NUMBER: _____

EMAIL: _____

DATE: _____

City of Shelbina
Golf Course Rd
Bridge No. 3965002

ITEMIZED BID FORM

LINE	ITEM	DESCRIPTION	UNITS	QUANTITY	UNIT PRICE	AMOUNT
ROADWAY ITEMS						
1	201	CLEARING AND GRUBBING	ACRE	0.2	_____	_____
2	203	UNCLASSIFIED EXCAVATION (ROADWAY)	C.Y.	21	_____	_____
3	203	EMBANKMENT IN PLACE W/COMPACTION	C.Y.	8	_____	_____
4	502	8 IN. PORTLAND CEMENT CONCRETE PAVEMENT	S.Y.	252	_____	_____
5	304	4 IN. ROLLED AGGREGATE BASE (TYPE 1 OR 5)	S.Y.	252	_____	_____
6	304	5 IN. ROLLED AGGREGATE (GRAVEL DRIVEWAY)	S.Y.	18	_____	_____
7	606	TRANSITION SECTION, 6.5 FT. POSTS	EACH	2	_____	_____
8	606	GUARDRAIL TYPE A	L.F.	37.5	_____	_____
9	606	END ANCHOR	EACH	4	_____	_____
10	616	CONSTRUCTION SIGNS	S.F.	63	_____	_____
11	616	TYPE III MOVEABLE BARRICADE	EACH	8	_____	_____
12	618	MOBILIZATION	L.S.	1	_____	_____
13	805	SEEDING	ACRE	0.2	_____	_____
14	806	SILT FENCE	L.F.	189	_____	_____
					<i>ROADWAY ITEMS SUBTOTAL</i>	_____
SPILLWAY REPAIR ITEMS						
15		CLASS B CONCRETE FIBER REINFORCED	C.Y.	136	_____	_____
16		#5 BARS 6" LONG ON 8' CENTERS	EACH	104	_____	_____
17		#5 TIE BARS 30" LONG ON 30" CENTERS FOR SLAB REPLACEMENT	EACH	70	_____	_____
18		CLEANING	S.Y.	788	_____	_____
19		REMOVAL OF DELAMINATED SECTIONS OF CONCRETE	S.Y.	12.3	_____	_____
20		CONCRETE BONDING AGENT	GAL.	35	_____	_____
21		MASONRY CONCRETE SKIM COAT OVER ROCK WALL 2"	S.Y.	59	_____	_____
22		MASONRY CONCRETE SKIM COAT OVER ENERGY DISSIPATING WALL 1"	S.Y.	4	_____	_____
23		ANCHORING EPOXY FOR TIE BARS	L.S.	1	_____	_____
24		REMOVAL OF SLAB CONCRETE	S.Y.	152	_____	_____
25		CONCRETE SAWING OF 4" OVERLAY 8' X 8' SQUARES	L.F.	1990	_____	_____
26		CRACK FILLER ON OVERLAY AND SLABS	L.F.	2150	_____	_____
27		CONCRETE SAWING OF SLABS	L.F.	160	_____	_____
28		4" SCHEDULE 40 PIPE	L.F.	20	_____	_____
29		FULL DEPTH WALL REPLACEMENT	L.F.	52	_____	_____
					<i>SPILLWAY REPAIR ITEMS SUBTOTAL</i>	_____



City of Shelbina
 Golf Course Rd
 Bridge No. 3965002

CONTRACTOR NAME: _____
 ADDRESS LINE 1: _____
 ADDRESS LINE 2: _____
 PHONE NUMBER: _____
 EMAIL: _____
 DATE: _____

ITEMIZED BID FORM

LINE	ITEM	DESCRIPTION	UNITS	QUANTITY	UNIT PRICE	AMOUNT
BRIDGE ITEMS						
30	216	PARTIAL REMOVAL OF BRIDGES	L.S.	1	_____	_____
31	703/706	REBUILD END BENT BACK WALLS	L.S.	1	_____	_____
32	703	SLAB ON STEEL	S.Y.	135	_____	_____
33	712	FABRICATED STRUCTURAL LOW ALLOY STEEL (I-BEAM) A709, GRADE 50W OR GRADE 50 (GALVANIZED)	L.F.	13160	_____	_____
PLEASE INDICATE WHICH OF THE FOLLOWING I-BEAMS ARE BEING BID: [] GRADE 50W [] GRADE 50 (GALVANIZED)						
34	713	BRIDGE GUARD RAIL (THRIE BEAM)	L.F.	180	_____	_____
35	716	PLAIN NEOPRENE BEARING PAD ASSEMBLY	EACH	24	_____	_____
<i>BRIDGE ITEMS SUBTOTAL</i>						_____
TOTAL CONTRACT						_____

Addenda

Signature

1 _____

2 _____

3 _____

DESIGN DESIGNATION

AA DT - 2018 = 50
 AA DT - 2038 = 68
 DHV = 10%
 T = 15%
 V = 10 MPH

FUNCTIONAL CLASSIFICATION - LOCAL

NO NEW RIGHT OF WAY
 TEMPORARY EASEMENT ONLY

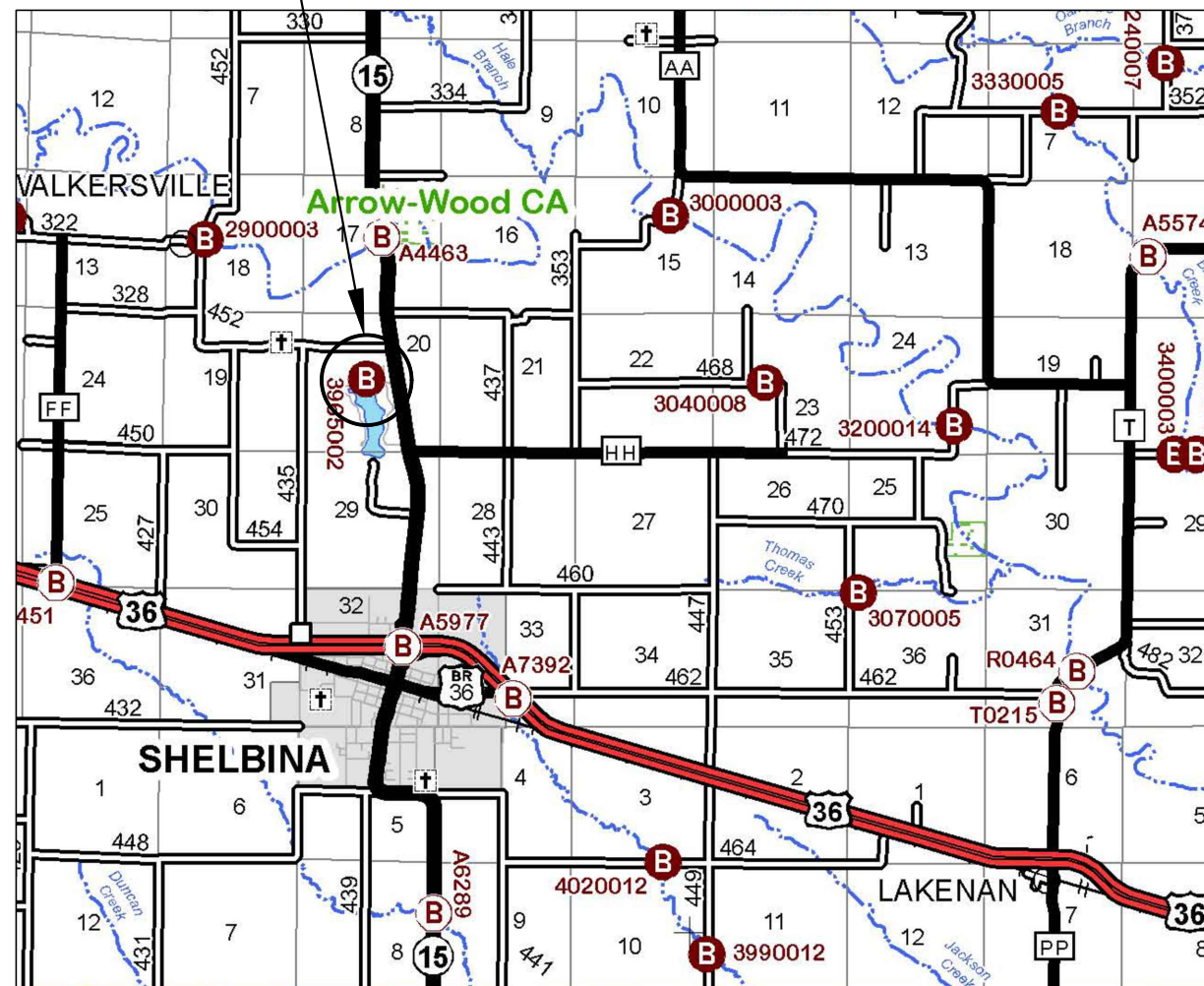
CONVENTIONAL SYMBOLS

- IRON PIN SET (TYPICAL)
GREAT RIVER 2001011476
- IRON PIN FOUND, AS NOTED
- ✕ CUT CROSS
- ▲ RIGHT OF WAY MARKER
- STONE
- △ CONTROL POINT
- ◆ PERMANENT BENCHMARK
- CONTOUR MAJOR
- - - CONTOUR MINOR
- DECIDUOUS TREE, SIZE AS NOTED
- CONIFER TREE, SIZE AS NOTED
- BUSH, SIZE AS NOTED
- ☆ LIGHT POLE
- ⊕ POWER POLE
- ⊕ ELECTRIC RISER
- ⊕ ELECTRIC BOX
- ⊕ ELECTRIC METER
- ⊕ GUY WIRE ANCHOR
- ⊕ PEDESTAL, AS NOTED
- ⊕ SANITARY SEWER CLEAN OUT
- ⊕ SEPTIC TANK
- ⊕ TELEPHONE RISER
- ⊕ GAS VALVE
- ⊕ GAS METER
- ⊕ WELL
- ⊕ WATER METER
- ⊕ WATER VALVE
- ⊕ FIRE HYDRANT
- ⊕ WATER HYDRANT
- ⊕ MAIL BOX
- ⊕ SIGN
- ⊕ POST
- ⊕ FLAG POLE
- ⊕ CABLE TV RISER
- SANITARY SEWER LINE
- FENCE CHAIN-LINK
- WIRE
- WOOD
- ELECTRIC LINE
- UNDERGROUND ELECTRIC LINE
- TELEPHONE LINE
- UNDERGROUND TELEPHONE LINE
- CABLE TV LINE
- GAS LINE
- WATER LINE
- GW GAS & WATER LINE
- FIBER OPTIC LINE
- TREE LINE

PLANS FOR REHABILITATION
 GOLF COURSE DR. BRIDGE #39650021
 OVER SHELBINA LAKE
 SECTION 20, TOWNSHIP 57 NORTH, RANGE 10 WEST
 BRO-R122(001)

CITY OF SHELBINA, MISSOURI

PROJECT LOCATION



INDEX OF SHEETS

SHEET TITLE	SHEET NUMBER
COVER SHEET	C1
GENERAL NOTES, QUANTITIES & TYP. SECTIONS	C2
ROADWAY PLAN & PROFILE	C3
GRADING & EROSION CONTROL PLAN	C4
CROSS SECTIONS	C5
SPILLWAY REPAIR PLAN	C6
SPILLWAY CONSTRUCTION DETAILS	C7
TRAFFIC MANAGEMENT PLAN	C8
TRAFFIC MANAGEMENT PLAN DETAILS	C9
BRIDGE PLAN & ELEVATION	S1
ESTIMATED QUANTITIES	S2
DETAILS OF END BENT NO. 1 & 6	S3-S4
DETAILS OF INT. BENT NOS. 2 THRU 5	S5
BEARING PAD ASSEMBLY	S6
GIRDER LAYOUT DETAILS	S7
SLAB DETAILS	S8
RAILING & DETAILS	S9
BILL OF REINFORCING	S10

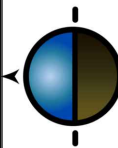
ADDENDUM #1 A1

LENGTH OF PROJECT

BEGINNING OF PROJECT	STA 0+52.86
END OF PROJECT	STA 2+24.81
APPARENT LENGTH	191.95 FEET

SUBMITTED AND RECOMMENDED

CITY ADMINISTRATOR



Great River Engineering - Missouri State Certificate of Authority Numbers:
 Engineering: 2000150695, Land Surveying: 2001011476,
 Landscape Architecture: 2007016973

Date	Revised/Issue	No.
3/18/2024 <td>ADDENDUM NO. 1 <td>1</td> </td>	ADDENDUM NO. 1 <td>1</td>	1

IF A SEAL IS PRESENT ON THIS SHEET IT HAS BEEN ELECTRONICALLY SEALED AND DATED.



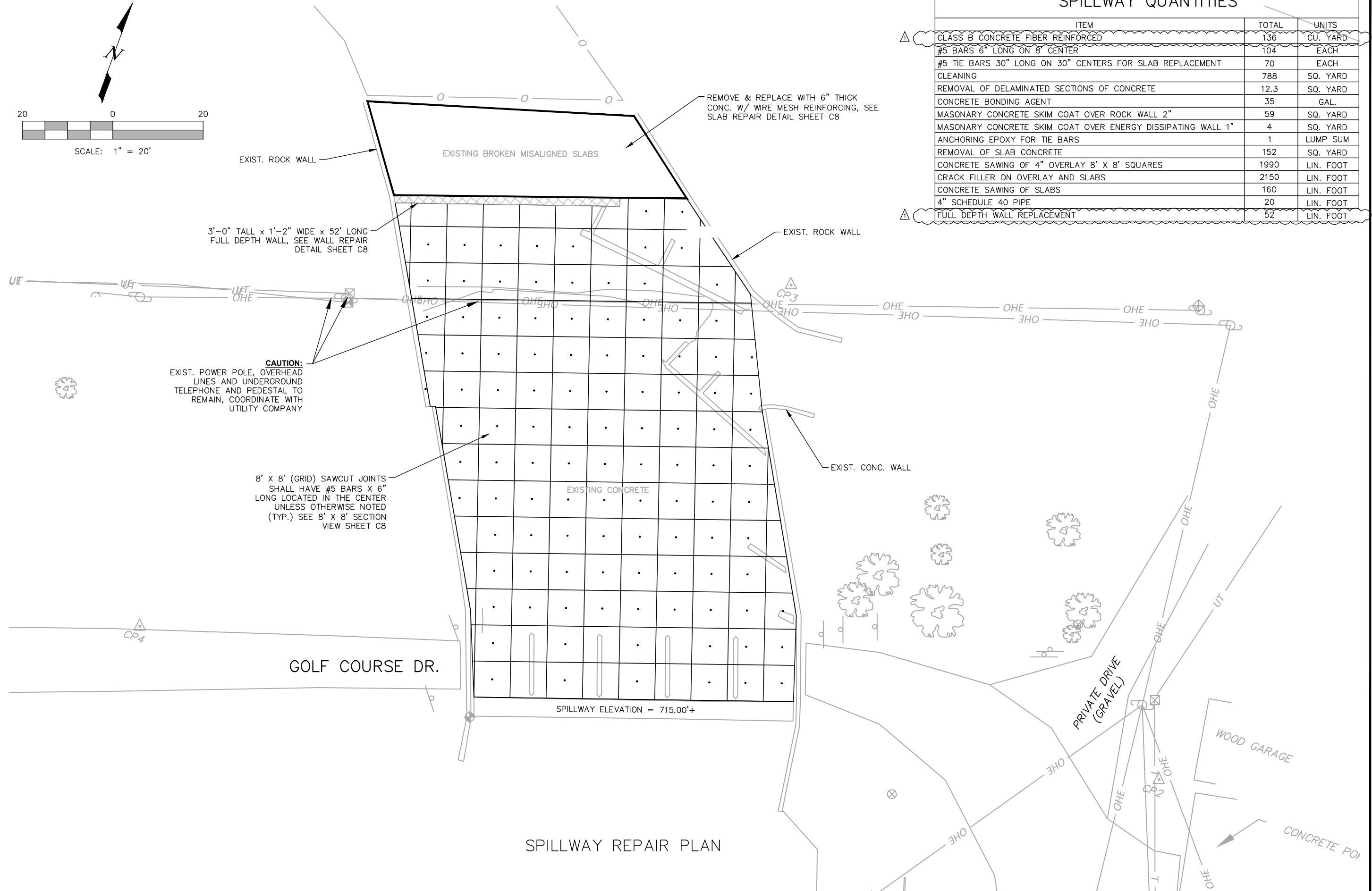
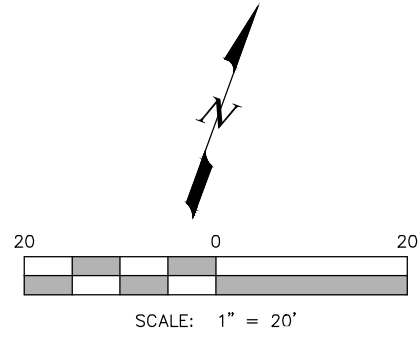
MELISSA M. MASSAR
 MO# PE-2018000237

GOLF COURSE DR. BRIDGE #39650021
 CITY OF SHELBINA, MISSOURI

COVER SHEET

CHECKED BY: MMM
DRAWN BY: KFB
JOB NUMBER: 4514
FILE NAME: 4514_Civil
SCALE: NA
ISSUE DATE: 2024-03-15
SHEET NUMBER:

C1



SPILLWAY QUANTITIES		
ITEM	TOTAL	UNITS
CLASS B CONCRETE FIBER REINFORCED	136	CU. YARD
#5 BARS 6" LONG ON 8" CENTER	104	EACH
#5 TIE BARS 30" LONG ON 30" CENTERS FOR SLAB REPLACEMENT	70	EACH
CLEANING	788	SQ. YARD
REMOVAL OF DELAMINATED SECTIONS OF CONCRETE	12.3	SQ. YARD
CONCRETE BONDING AGENT	35	GAL.
MASONRY CONCRETE SKIM COAT OVER ROCK WALL 2"	59	SQ. YARD
MASONRY CONCRETE SKIM COAT OVER ENERGY DISSIPATING WALL 1"	4	SQ. YARD
ANCHORING EPOXY FOR TIE BARS	1	LUMP SUM
REMOVAL OF SLAB CONCRETE	152	SQ. YARD
CONCRETE SAWING OF 4" OVERLAY 8' X 8' SQUARES	1990	LIN. FOOT
CRACK FILLER ON OVERLAY AND SLABS	2150	LIN. FOOT
CONCRETE SAWING OF SLABS	160	LIN. FOOT
4" SCHEDULE 40 PIPE	20	LIN. FOOT
FULL DEPTH WALL REPLACEMENT	52	LIN. FOOT



Date	3/18/2024
Revision/Issue	ADDENDUM NO. 1
No.	1

IF A SEAL IS PRESENT ON THIS SHEET IT HAS BEEN ELECTRONICALLY SEALED AND DATED.

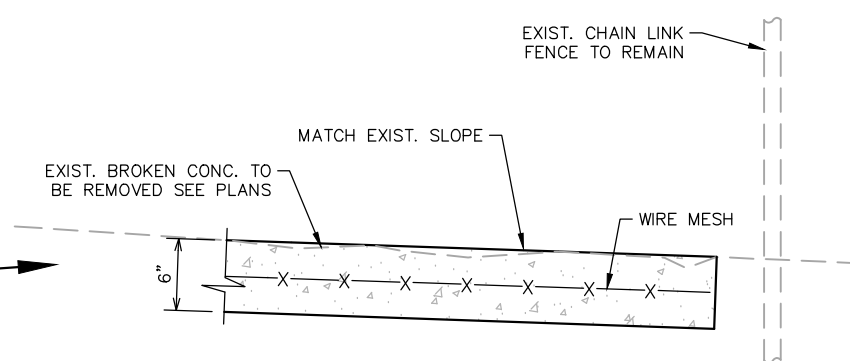


MICHAEL E. TEEL
PE #029470

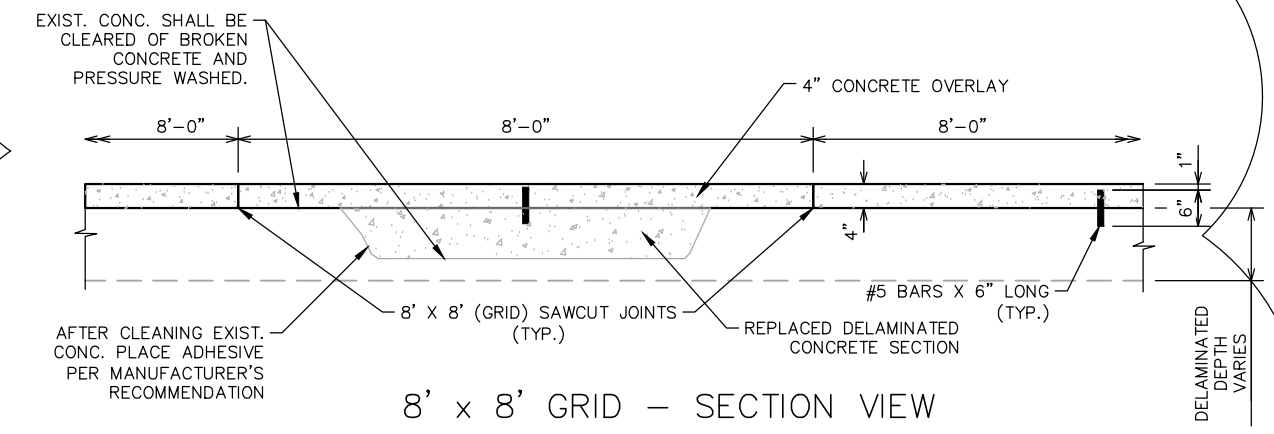
GOLF COURSE DR. BRIDGE #39650021
CITY OF SHELBY, MISSOURI
SPILLWAY REPAIR PLAN

CHECKED BY:	MET
DRAWN BY:	KFB
JOB NUMBER:	4514
FILE NAME:	4514_Civil
SCALE:	NOTED
ISSUE DATE:	2024-03-15
SHEET NUMBER:	C6

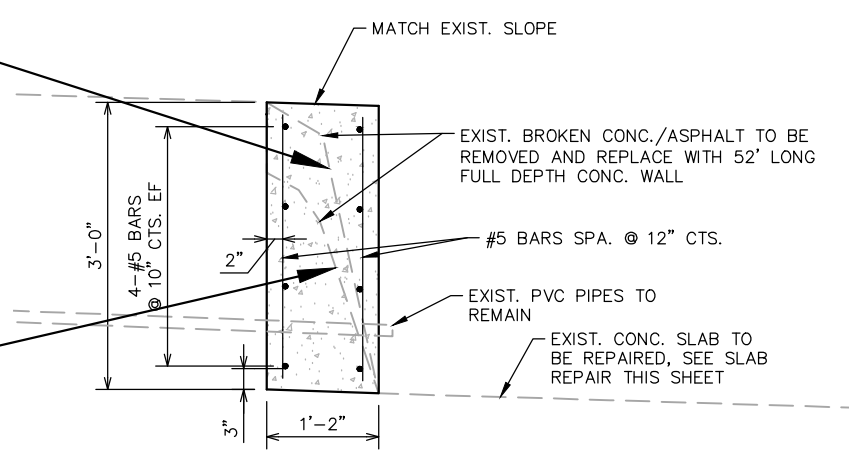
C6



SLAB REPAIR DETAIL



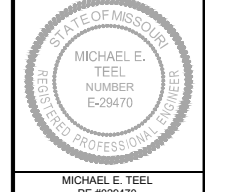
8' x 8' GRID - SECTION VIEW



WALL REPAIR DETAIL

Date	3/18/2024
Revision/Issue	
ADDENDUM NO. 1	
No.	1

IF A SEAL IS PRESENT ON THIS SHEET IT HAS BEEN ELECTRONICALLY SEALED AND DATED.

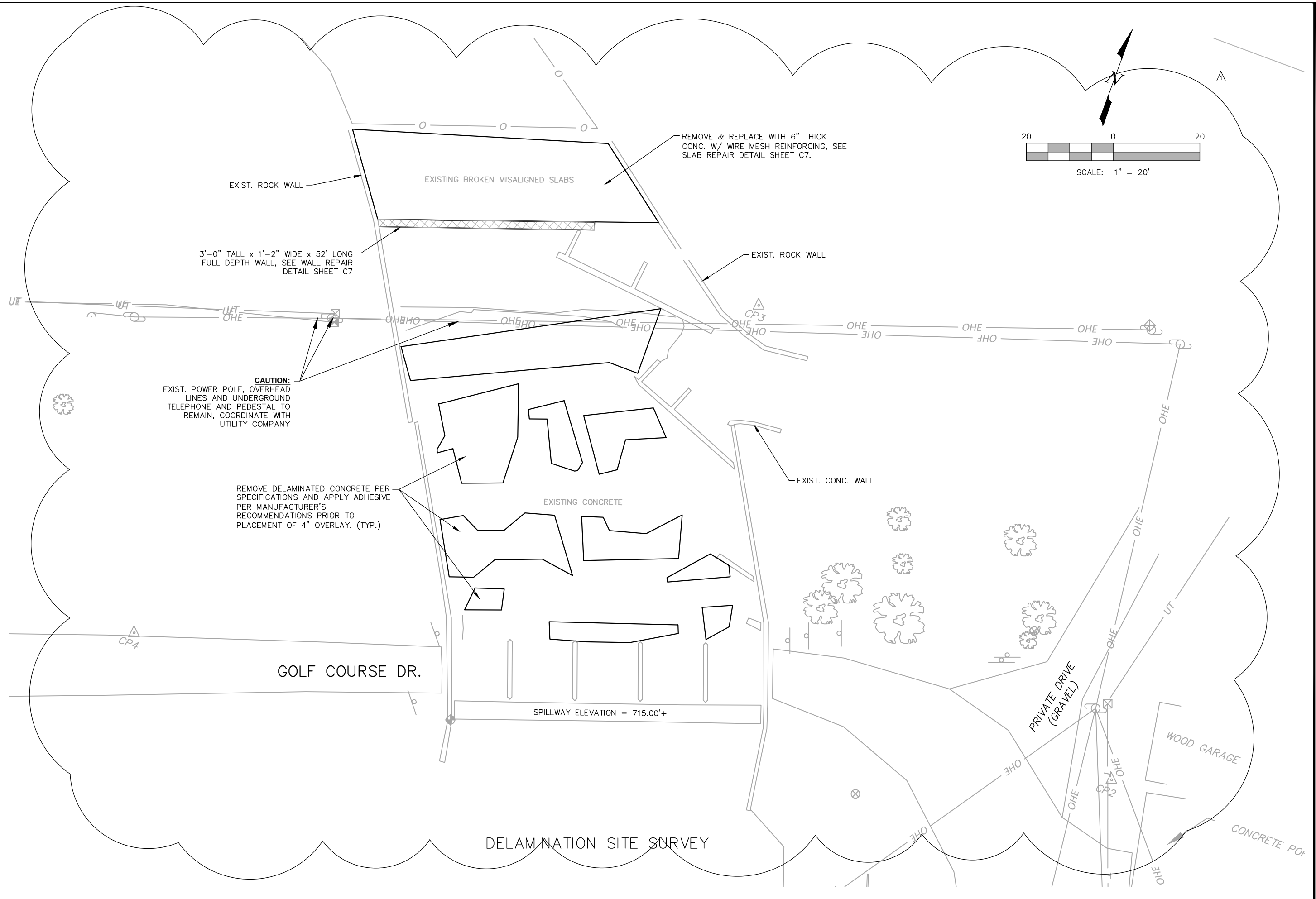


MICHAEL E. TEEL
PE #029470

GOLF COURSE DR. BRIDGE #39650021
CITY OF SHELBYNA, MISSOURI
SPILLWAY CONSTRUCTION DETAILS

Copyright © 2023 by Great River Engineering

CHECKED BY:	MET
DRAWN BY:	KFB
JOB NUMBER:	4514
FILE NAME:	4514_Civil
SCALE:	NOTED
ISSUE DATE:	2024-03-15
SHEET NUMBER:	



Date	3/18/2024
Revision/Issue	ADDENDUM NO. 1
No.	1

IF A SEAL IS PRESENT ON THIS SHEET IT HAS BEEN ELECTRONICALLY SEALED AND DATED.



MICHAEL E. TEEL
PE #029470

GOLF COURSE DR. BRIDGE #39650021
CITY OF SHELBYNA, MISSOURI
DELAMINATION SITE SURVEY

CHECKED BY:	MET
DRAWN BY:	KFB
JOB NUMBER:	4514
FILE NAME:	4514_Civil
SCALE:	NOTED
ISSUE DATE:	2024-03-15
SHEET NUMBER:	A1