

GENERAL NOTES:

Anchor bolts for Type E bearings shall be \varnothing ASTM F1554 Grade 55 swaged bolts and shall extend into the concrete with ASTM A563 Grade A Heavy Hex nuts. Actual manufacturer's certified mill test reports (chemical and mechanical) shall be provided. Use ASTM F436 hardened washers for the fixed bearings and no heavy hex nuts or hardened washers for the expansion bearings. Swedging shall be 1" less than extension into the concrete.

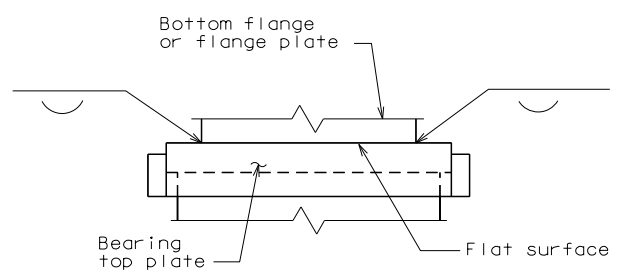
Anchor bolts, hardened washers and heavy hex nuts shall be coated with a minimum of two coats of inorganic zinc primer to provide a total dry film thickness of 4 mils minimum, 6 mils maximum, or galvanized in accordance with Sec 1081.

Weight of the anchor bolts, hardened washers and heavy hex nuts for bearings are included in the weight of the Fabricated Structural Steel.

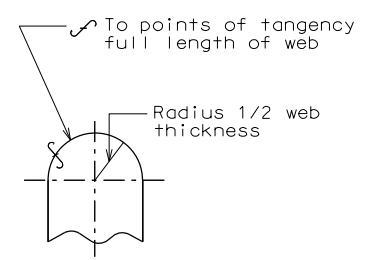
☞ Indicates machine finish surface.

A lubricant coating shall be applied in the shop to both mating surfaces of the bearing assembly. The lubricant, method of cleaning, and application shall meet the requirements of MIL-L-23398 and MIL-L-46147. The coated areas shall be protected for shipping and erection.

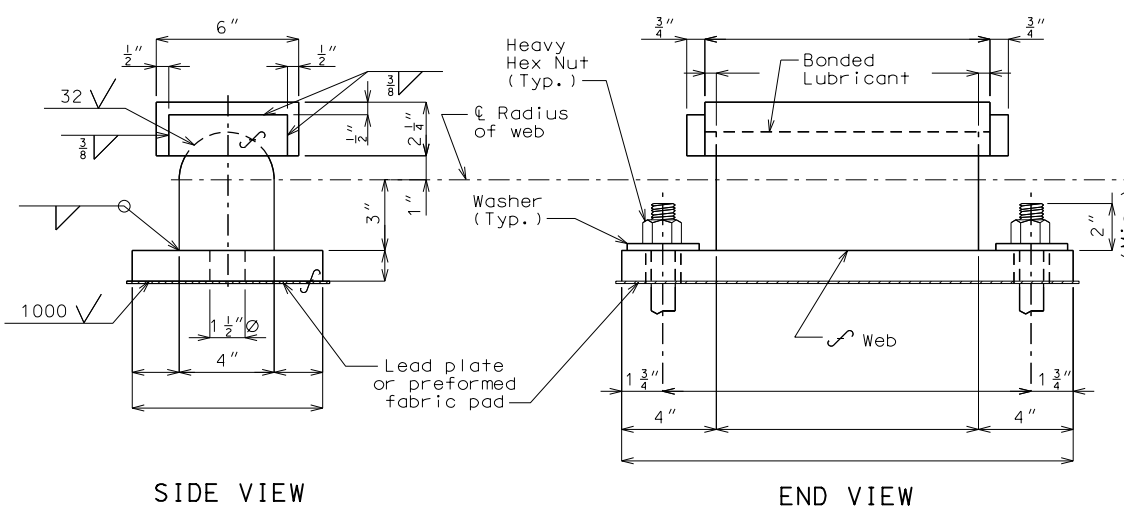
Shop drawings are not required for the lead plates and the preformed fabric pads.



WELDING DETAILS



END VIEW OF WEB

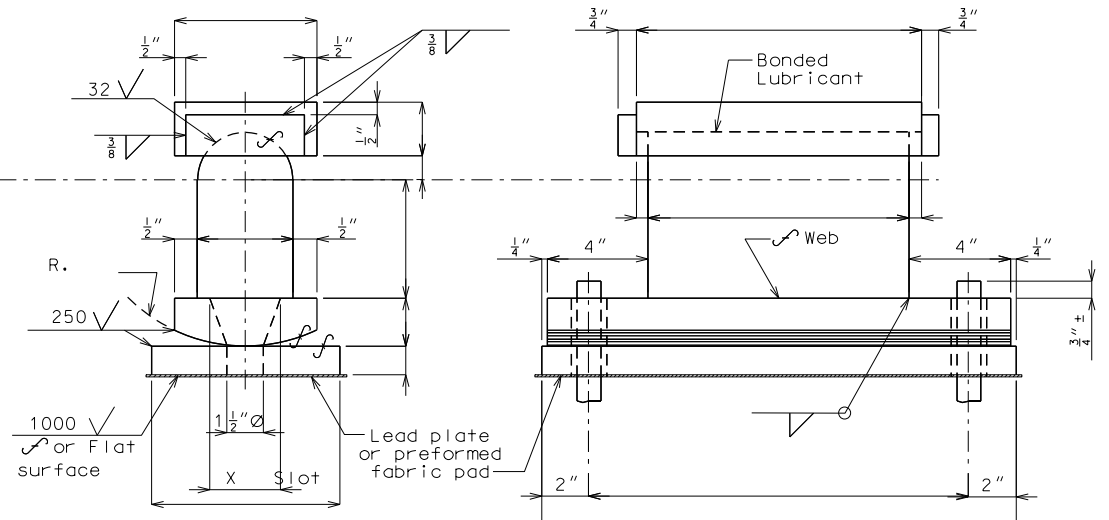


SIDE VIEW

END VIEW

FIXED

Number Required:



SIDE VIEW

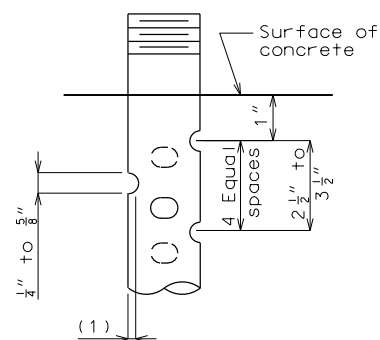
END VIEW

EXPANSION

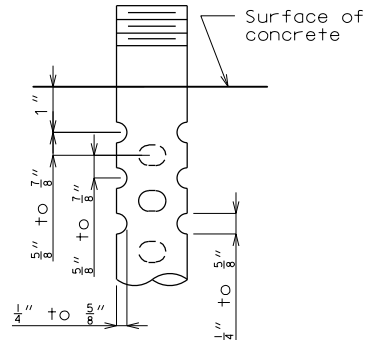
Number Required:

TYPE E BEARINGS

(Estimated Weight pounds)



DETAIL FOR 3/4" Ø THRU 2 1/2" Ø ANCHOR BOLTS



OPTIONAL DETAIL FOR 1 3/8" Ø THRU 2 1/2" Ø ANCHOR BOLTS

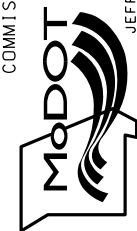
SWEDGE ANCHOR BOLT DETAILS

- (1) 1/8" for 3/4" Ø thru 1 1/4" Ø anchor bolts
- 1/8" to 1/4" for 1 3/8" Ø thru 2 1/2" Ø anchor bolts

Note: This drawing is not to scale. Follow dimensions.

Sheet No. of

DATE PREPARED 4/7/2022	
ROUTE *	STATE MO
DISTRICT BR	SHEET NO. *
COUNTY *	
JOB NO. *	
CONTRACT ID.	
PROJECT NO.	
BRIDGE NO. BRG03	
DESCRIPTION	DATE
MISSOURI HIGHWAYS AND TRANSPORTATION COMMISSION	105 WEST CAPITOL JEFFERSON CITY, MO 65102 1-888-ASK-MODOT (1-888-275-6636)



IF A SEAL IS PRESENT ON THIS SHEET IT HAS BEEN ELECTRONICALLY SEALED AND DATED.