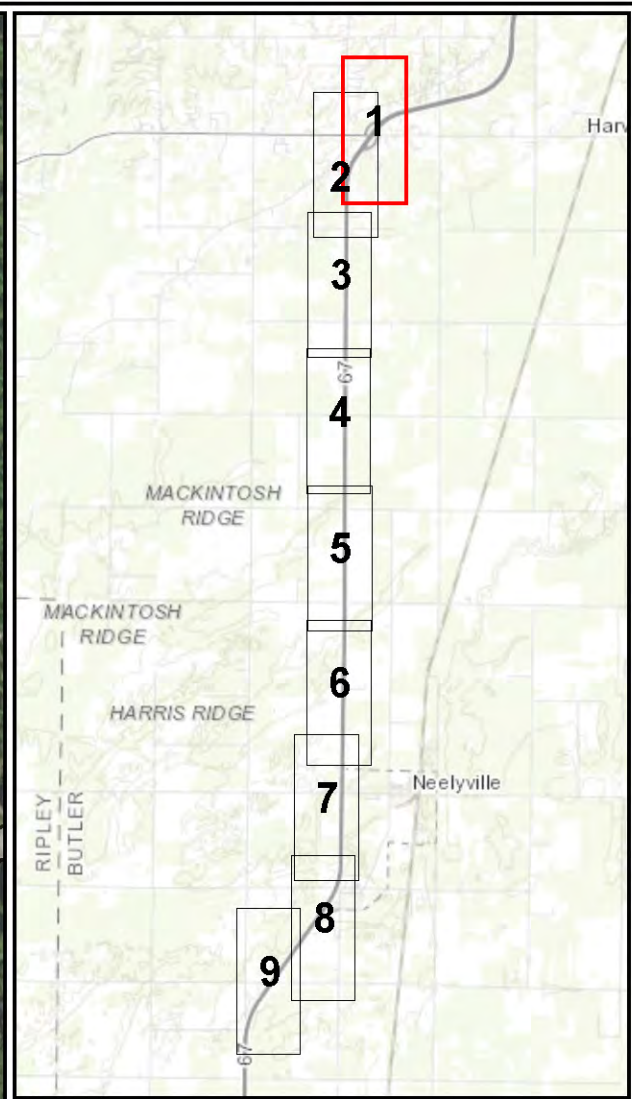
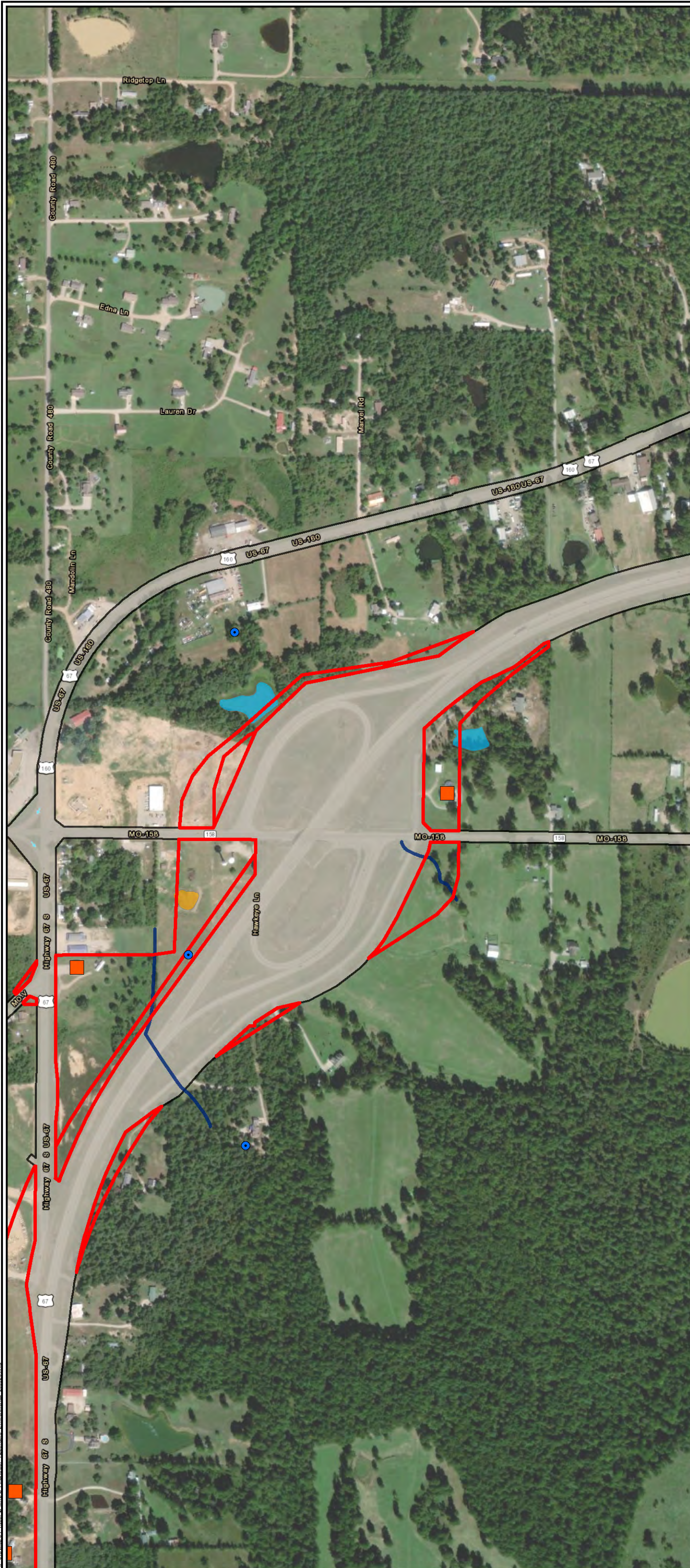


Appendix C

Map Index



Legend

- New ROW
- Existing ROW
- Potential Displacement
- Water Well

Delineated Surface Water Features

- Delineated Stream

Delineated Wetlands

- Open Water
- Scrub Shrub



**Appendix C.
Environmental
Features
Sheet 1 of 9**

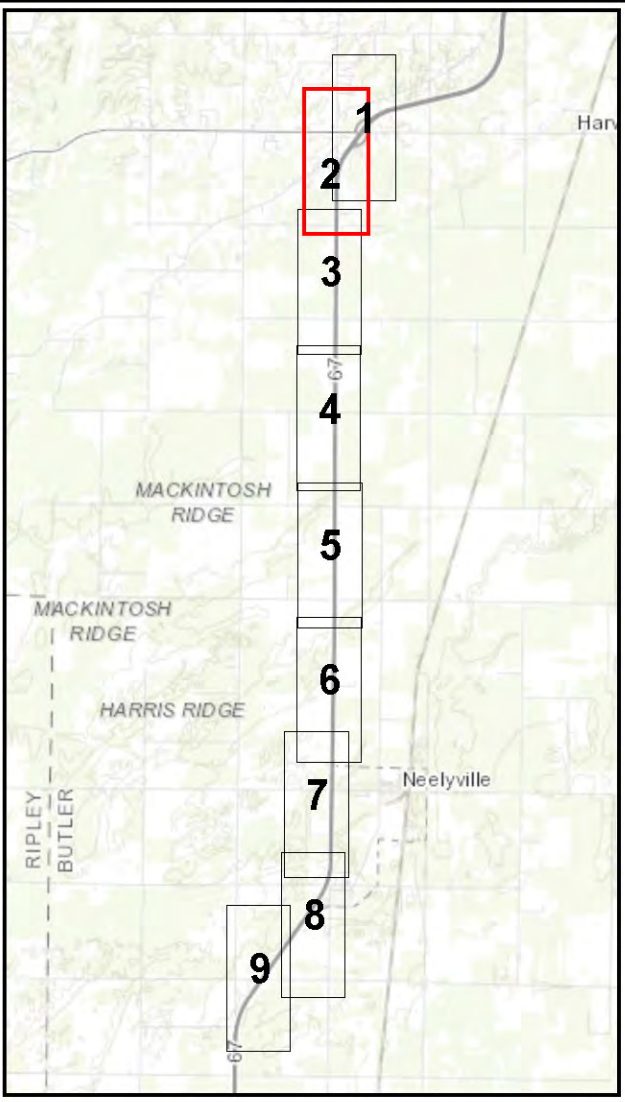


**US Route 67
Re-Evaluation**

Job No. 325220170
 Drawn By: BSM
 Reviewed By: RLL
 Date: 9/23/2020



The map shown here has been created with all due and reasonable care and is strictly for use with Wood Projects. This map has not been certified by a licensed land surveyor, and any third party use of this map comes without warranties of any kind. Wood assumes no liability, direct or indirect, whatsoever for any such third party or unintended use.



Legend

- New ROW
- Existing ROW
- Potential Displacement
- Water Well
- 100-Year Floodplain

Delineated Surface Water Features

- Delineated Stream
- Delineated Wetlands
- Open Water
 - Scrub Shrub



**Appendix C.
Environmental
Features
Sheet 2 of 9**



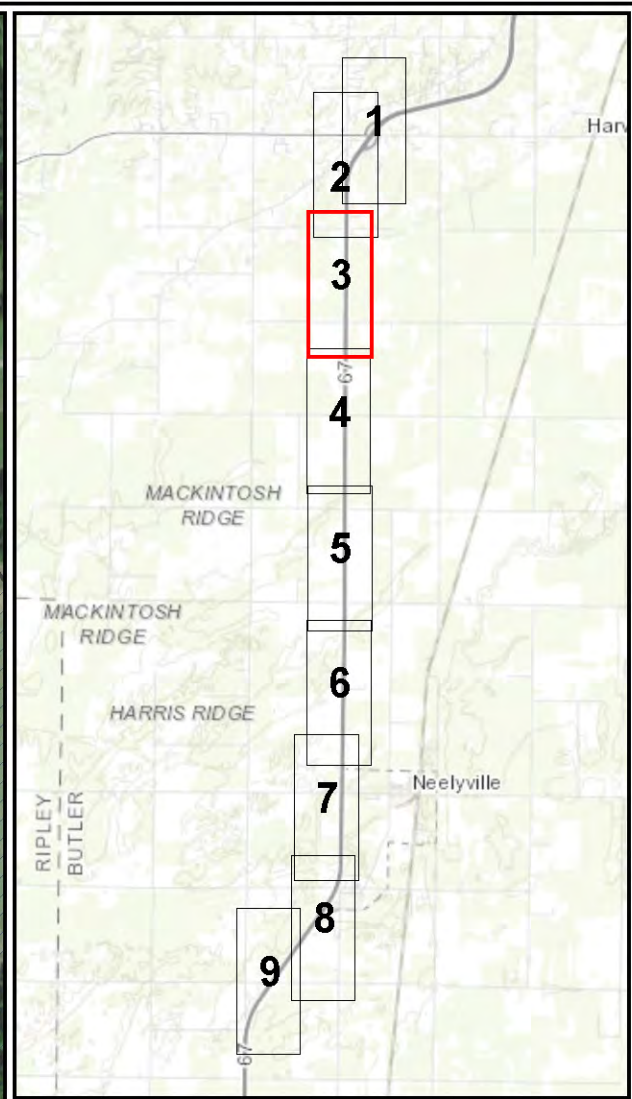
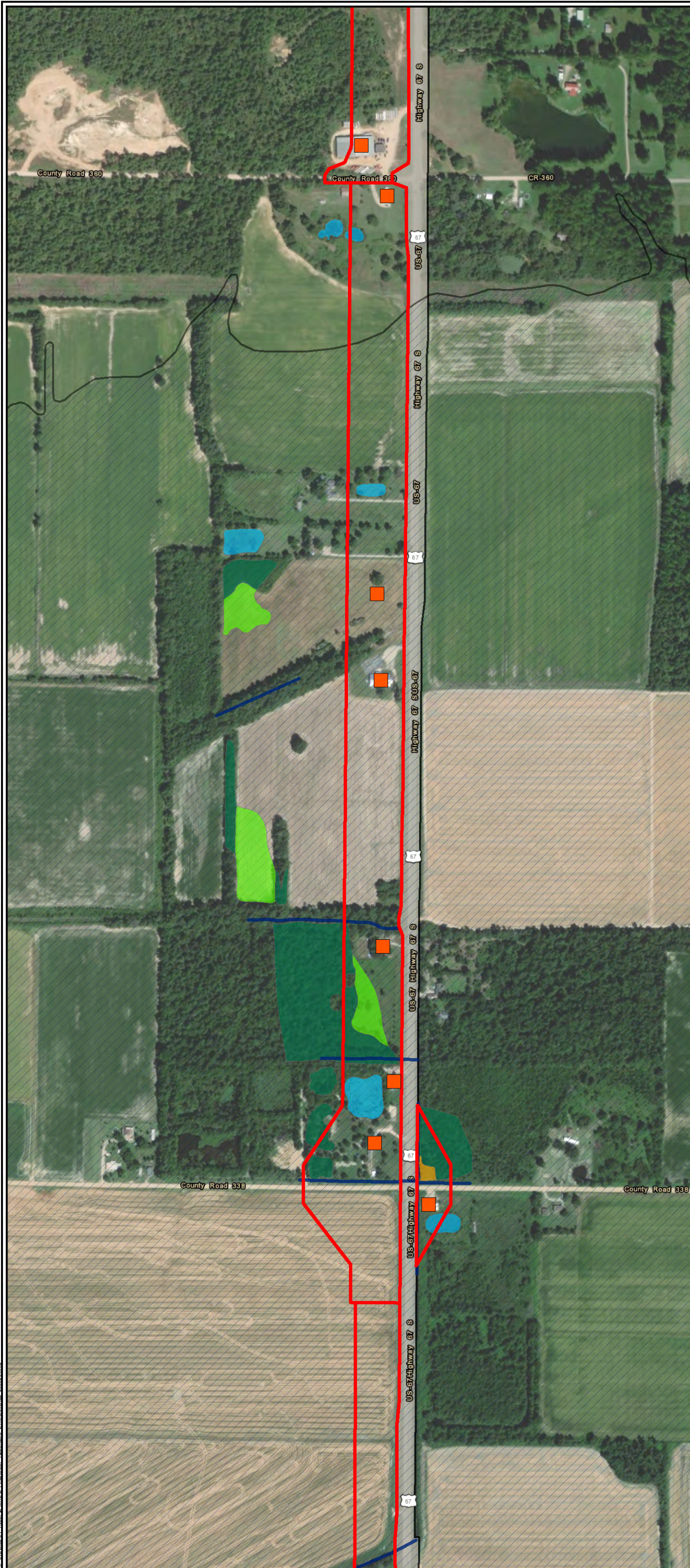
**US Route 67
Re-Evaluation**

Job No. 325220170
 Drawn By: BSM
 Reviewed By: RLL
 Date: 9/23/2020



The map shown here has been created with all due and reasonable care and is strictly for use with Wood Projects. This map has not been certified by a licensed land surveyor, and any third party use of this map comes without warranties of any kind. Wood assumes no liability, direct or indirect, whatsoever for any such third party or unintended use.

X:\GIS\MODOT_Env\2020_Env\US67_Environmental_202023.mxd



Legend

- New ROW
- Existing ROW
- Potential Displacement
- 100-Year Floodplain

Delineated Surface Water Features

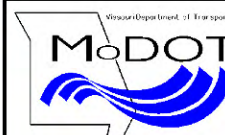
- Delineated Stream

Delineated Wetlands

- Emergent
- Forested
- Open Water
- Scrub Shrub



**Appendix C.
Environmental
Features
Sheet 3 of 9**

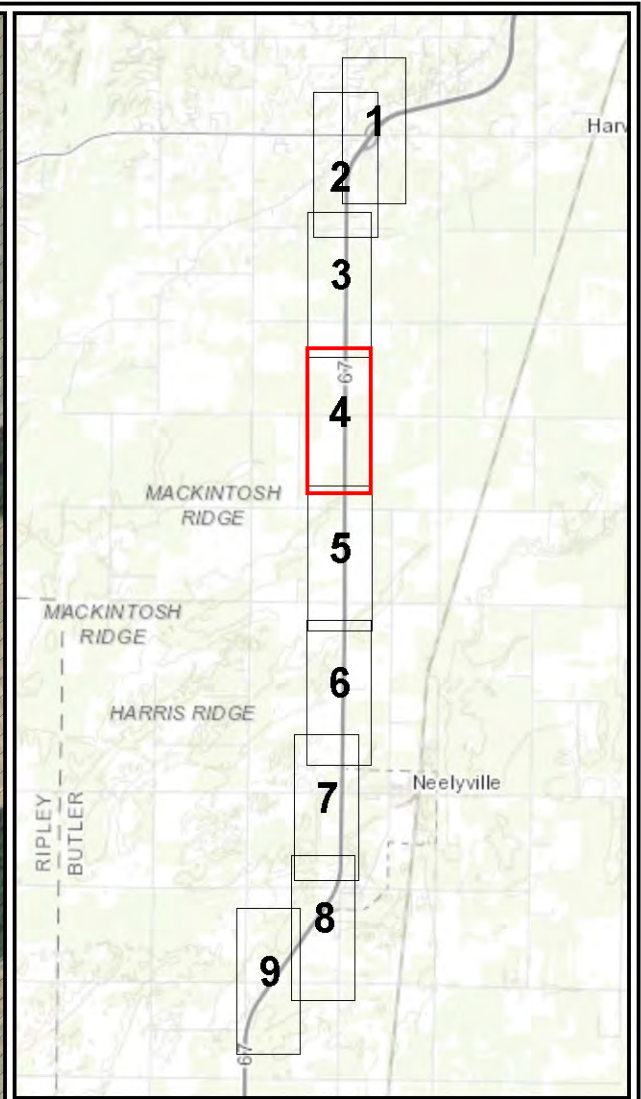
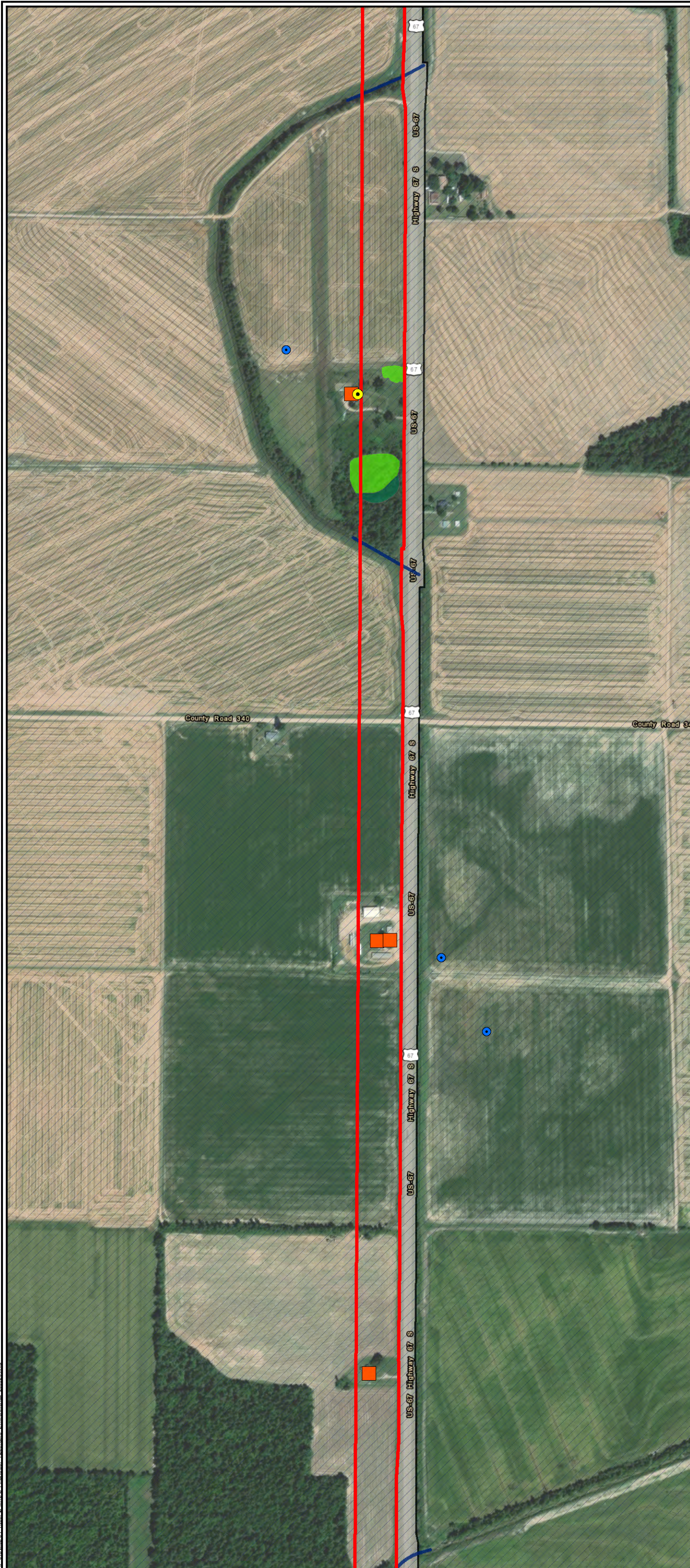


**US Route 67
Re-Evaluation**

Job No. 325220170
 Drawn By: BSM
 Reviewed By: RLL
 Date: 9/23/2020



The map shown here has been created with all due and reasonable care and is strictly for use with Wood Projects. This map has not been certified by a licensed land surveyor, and any third party use of this map comes without warranties of any kind. Wood assumes no liability, direct or indirect, whatsoever for any such third party or unintended use.



Legend

- New ROW
- Existing ROW
- Potential Displacement
- Impacted Noise Receptor
- Water Well
- 100-Year Floodplain

Delineated Surface Water Features

- Delineated Stream

Delineated Wetlands

- Emergent
- Forested



**Appendix C.
Environmental
Features
Sheet 4 of 9**

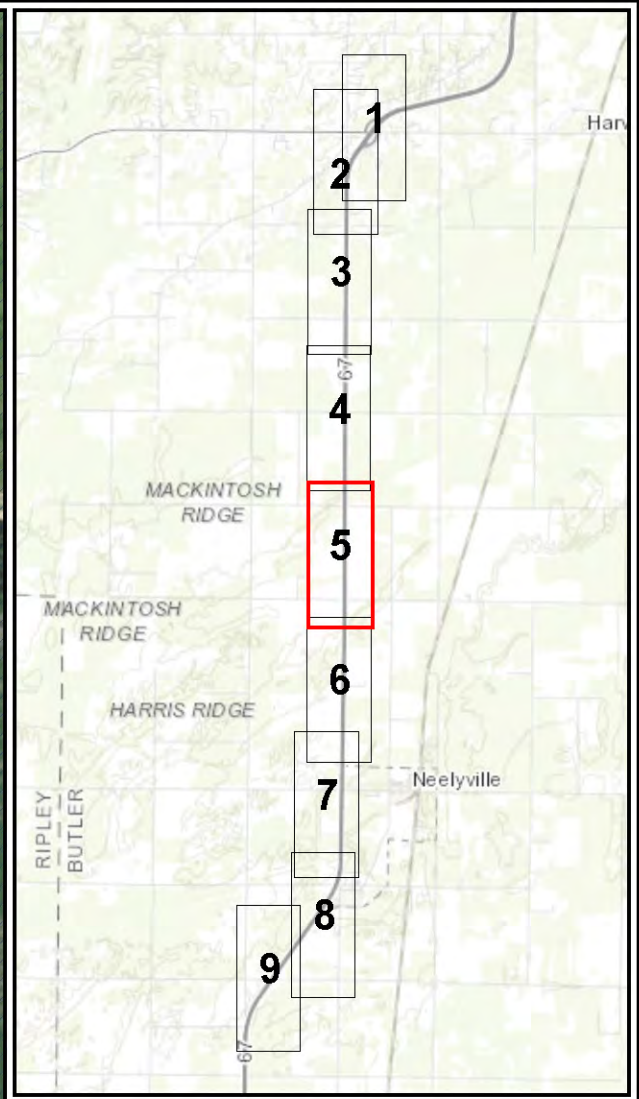
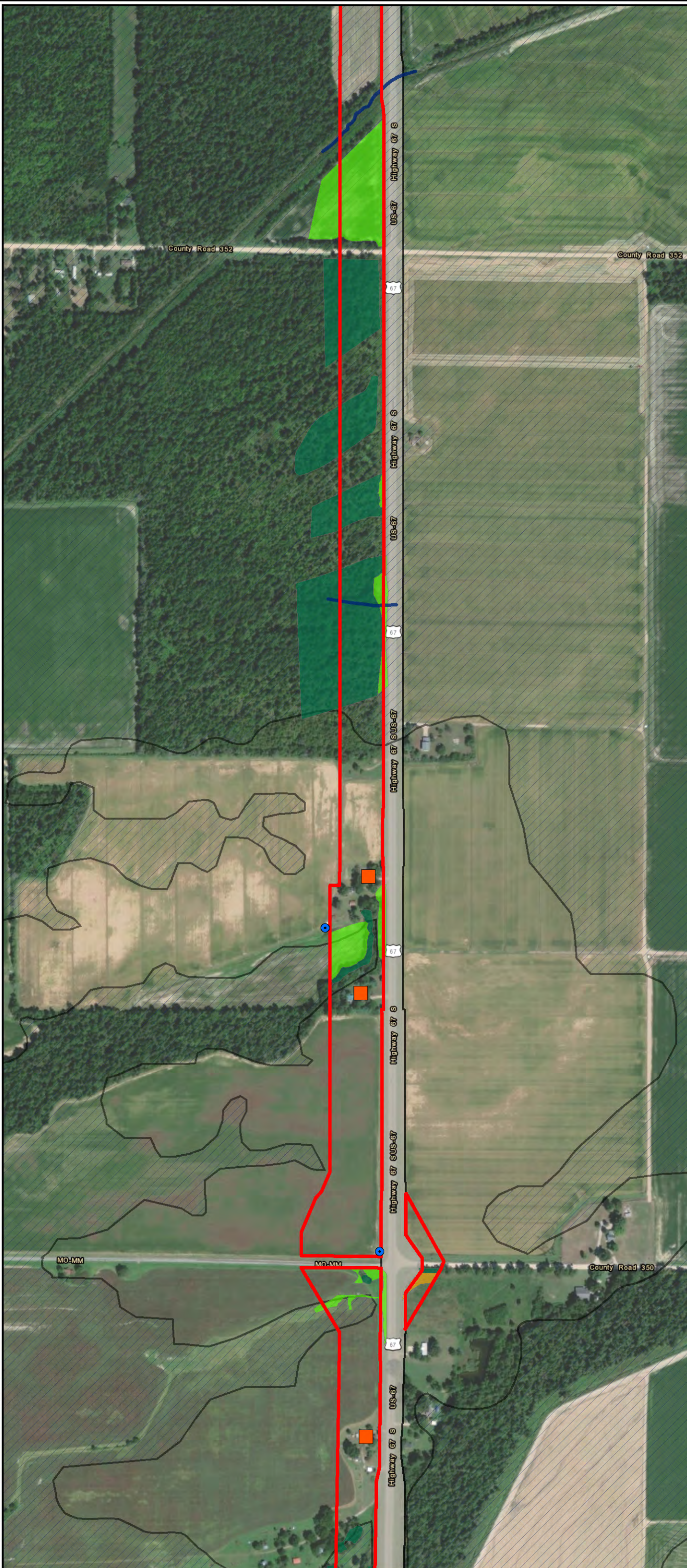


**US Route 67
Re-Evaluation**

Job No. 325220170
 Drawn By: BSM
 Reviewed By: RLL
 Date: 9/23/2020



The map shown here has been created with all due and reasonable care and is strictly for use with Wood Projects. This map has not been certified by a licensed land surveyor, and any third party use of this map comes without warranties of any kind. Wood assumes no liability, direct or indirect, whatsoever for any such third party or unintended use.



Legend

- New ROW
- Existing ROW
- Potential Displacement
- Water Well
- 100-Year Floodplain

Delineated Surface Water Features

- Delineated Stream

Delineated Wetlands

- Emergent
- Forested
- Scrub Shrub



**Appendix C.
Environmental
Features
Sheet 5 of 9**



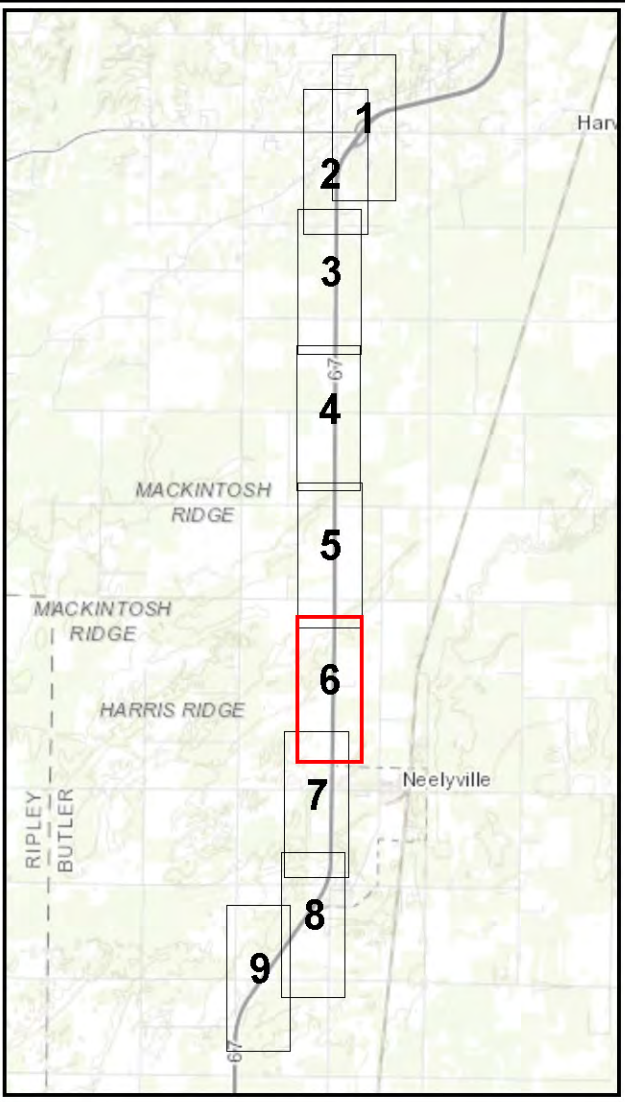
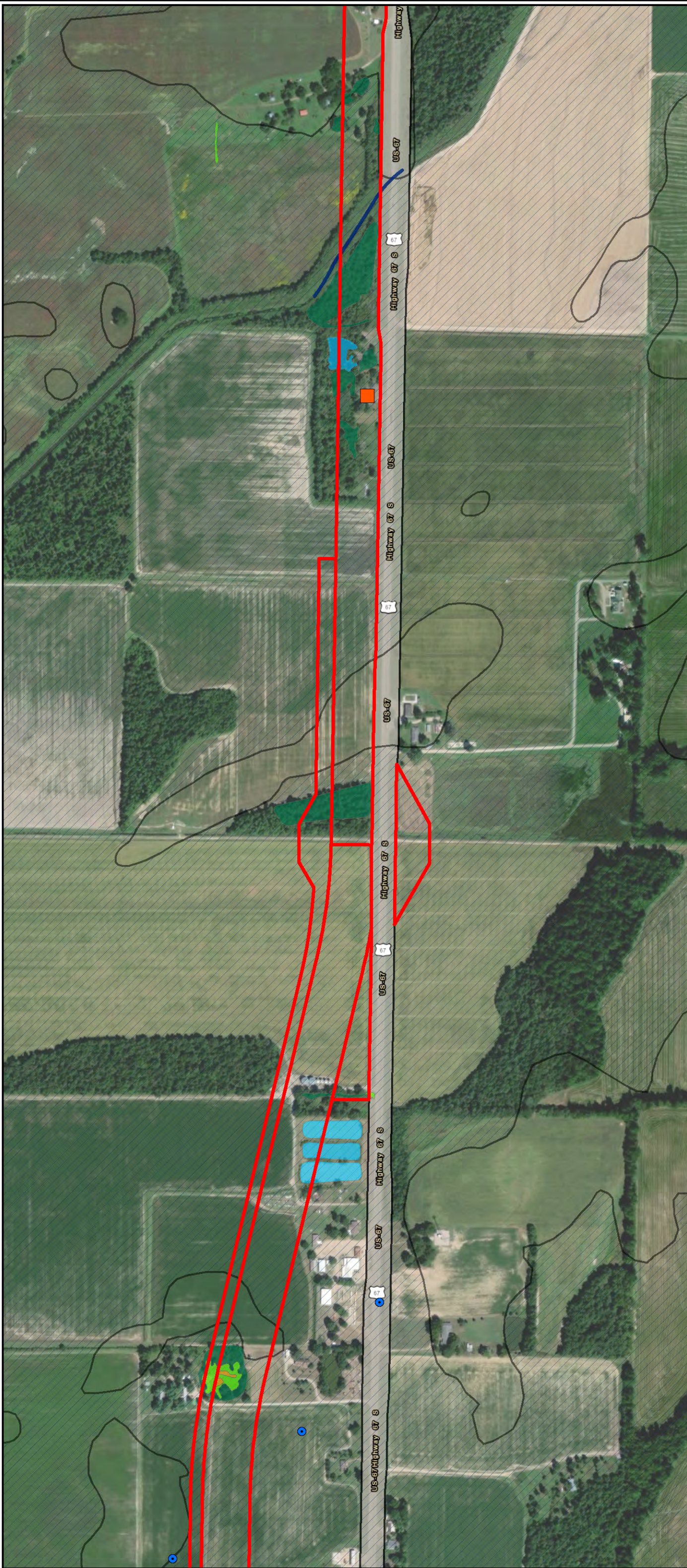
**US Route 67
Re-Evaluation**

Job No. 325220170
 Drawn By: BSM
 Reviewed By: RLL
 Date: 9/23/2020



The map shown here has been created with all due and reasonable care and is strictly for use with Wood Projects. This map has not been certified by a licensed land surveyor, and any third party use of this map comes without warranties of any kind. Wood assumes no liability, direct or indirect, whatsoever for any such third party or unintended use.

X:\GIS\MODOT_EIR\67\Map\MO-00_Environmental_Environmental_20180923.mxd



Legend

- New ROW
- Existing ROW
- Potential Displacement
- Water Well
- 100-Year Floodplain

Delineated Surface Water Features

- Delineated Stream

Delineated Wetlands

- Emergent
- Forested
- Open Water
- Scrub Shrub



**Appendix C.
Environmental
Features
Sheet 6 of 9**



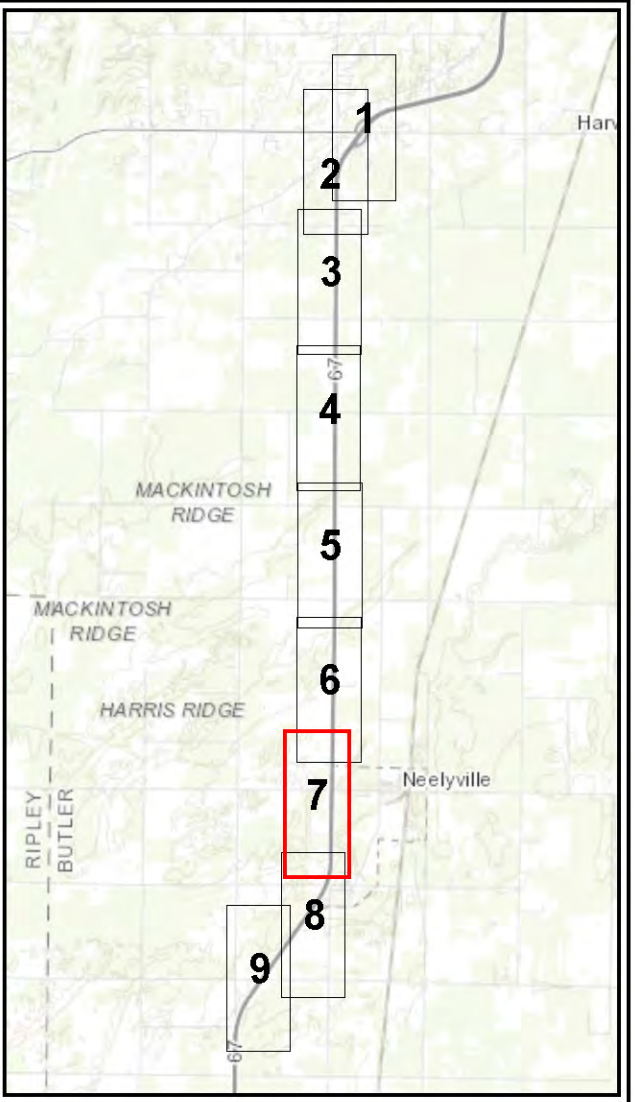
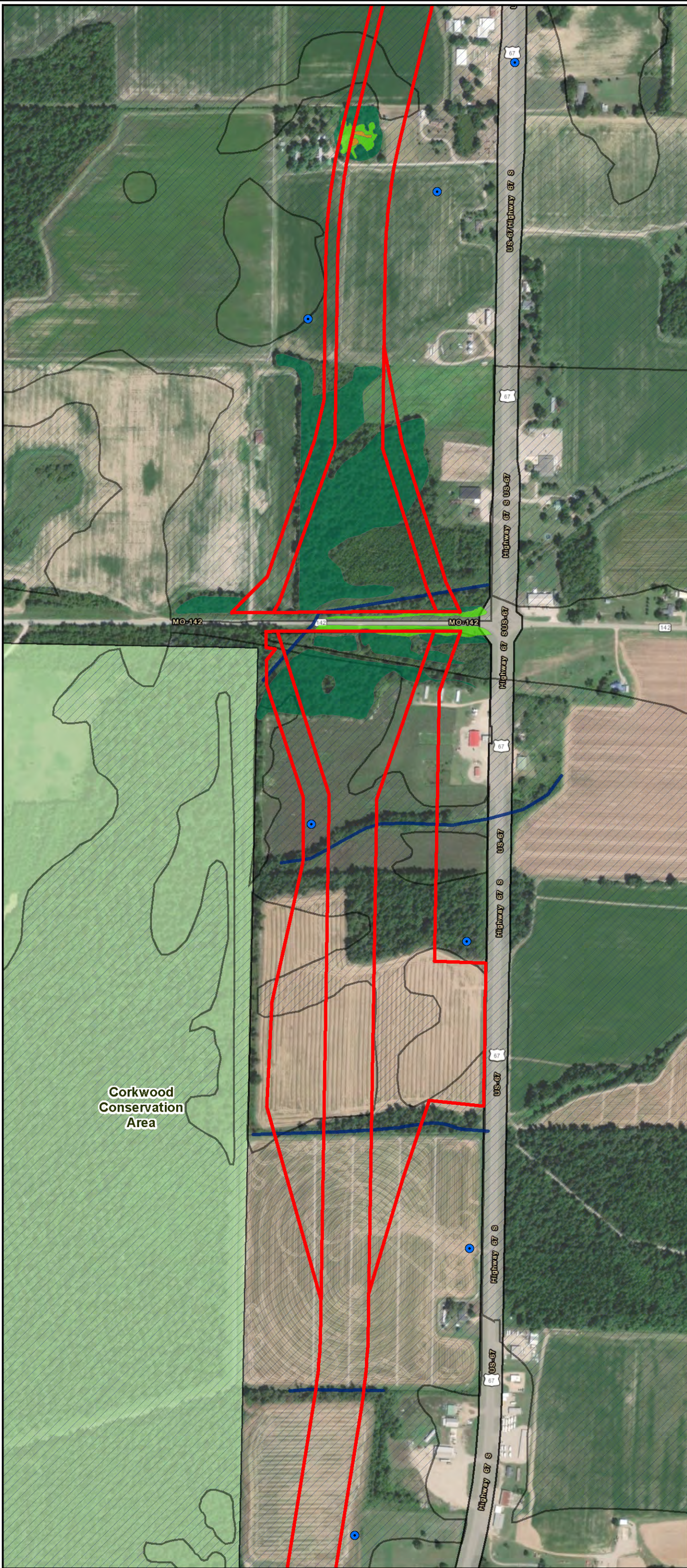
**US Route 67
Re-Evaluation**

Job No. 325220170
 Drawn By: BSM
 Reviewed By: RLL
 Date: 9/23/2020



The map shown here has been created with all due and reasonable care and is strictly for use with Wood Projects. This map has not been certified by a licensed land surveyor, and any third party use of this map comes without warranties of any kind. Wood assumes no liability, direct or indirect, whatsoever for any such third party or unintended use.

X:\GIS\MODOT_EHS\2020_Env\US67_Environmental_20200923.mxd



Legend

- New ROW
- Existing ROW
- Water Well
- Corkwood Conservation Area
- 100-Year Floodplain

Delineated Surface Water Features

- Delineated Stream

Delineated Wetlands

- Emergent
- Forested
- Scrub Shrub



**Appendix C.
Environmental
Features
Sheet 7 of 9**



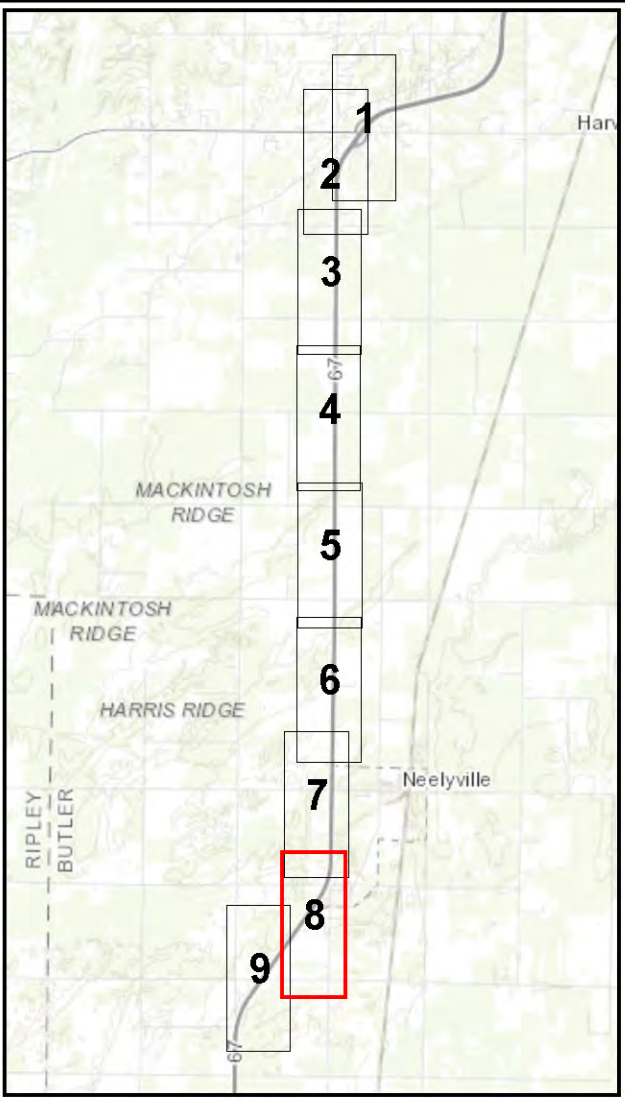
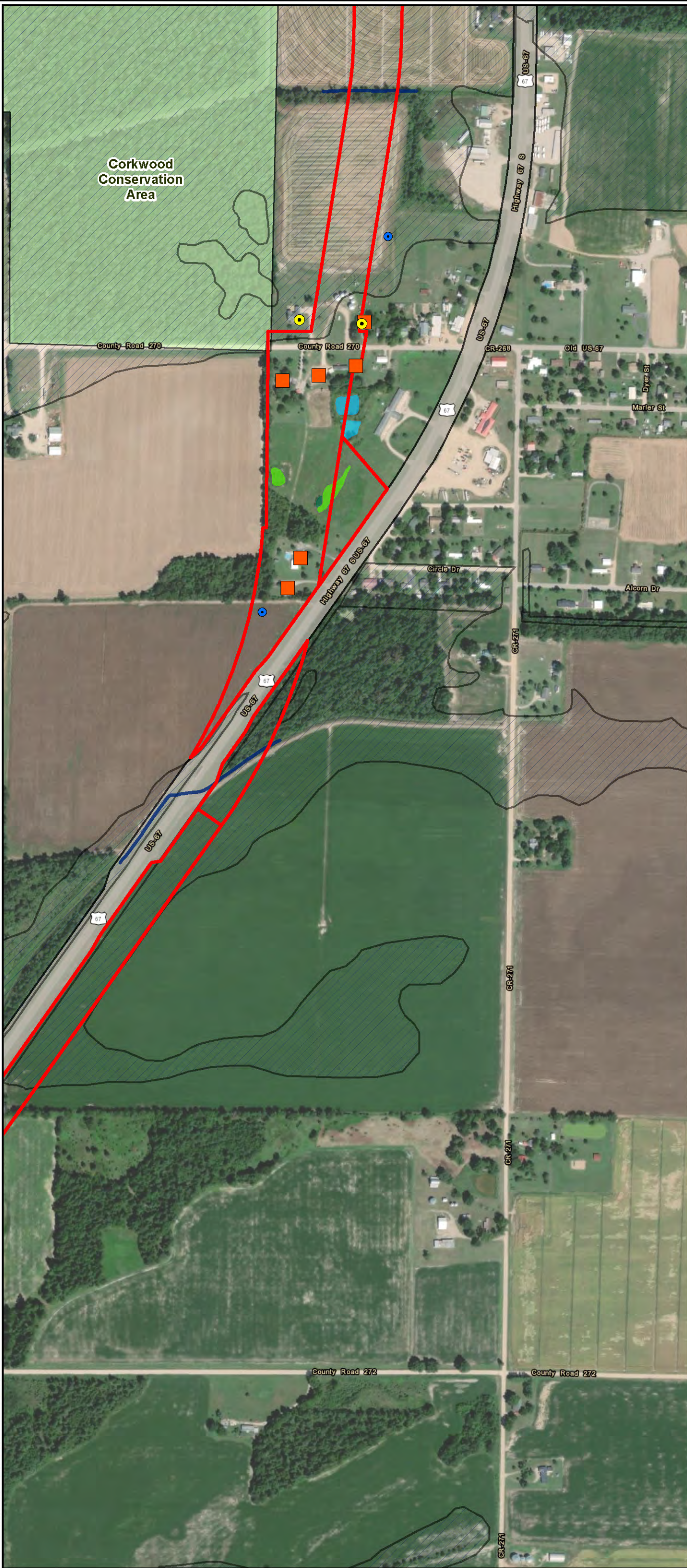
**US Route 67
Re-Evaluation**

Job No. 325220170
 Drawn By: BSM
 Reviewed By: RLL
 Date: 9/23/2020



The map shown here has been created with all due and reasonable care and is strictly for use with Wood Projects. This map has not been certified by a licensed land surveyor, and any third party use of this map comes without warranties of any kind. Wood assumes no liability, direct or indirect, whatsoever for any such third party or unintended use.

C:\GIS\MODOT_Env\2020_09\US67_Env\US67_Env\Map_Series_Environmental_20200923.mxd



Legend

- New ROW
- Existing ROW
- Potential Displacement
- Impacted Noise Receptor
- Water Well
- Corkwood Conservation Area
- 100-Year Floodplain
- Delineated Surface Water Features**
- Delineated Stream
- Delineated Wetlands**
- Emergent
- Forested
- Open Water



**Appendix C.
Environmental
Features
Sheet 8 of 9**



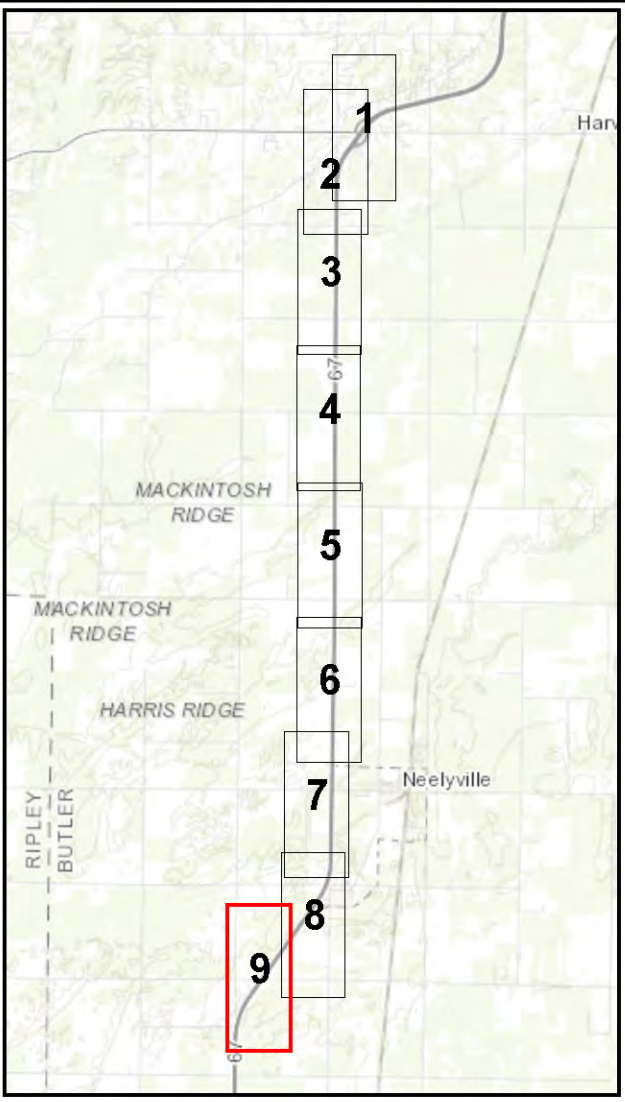
**US Route 67
Re-Evaluation**

Job No. 325220170
 Drawn By: BSM
 Reviewed By: RLL
 Date: 9/23/2020







The map shown here has been created with all due and reasonable care and is strictly for use with Wood Projects. This map has not been certified by a licensed land surveyor, and any third party use of this map comes without warranties of any kind. Wood assumes no liability, direct or indirect, whatsoever for any such third party or unintended use.



X:\GIS\MODOT_Env\2020_09\US67_Env\US67_Env\Appendix C Environmental_Sheet 8.mxd



Legend

-  New ROW
-  Existing ROW
-  Potential Displacement
-  100-Year Floodplain

Delineated Surface Water Features

-  Delineated Stream
- Delineated Wetlands**
-  Emergent



**Appendix C.
Environmental
Features
Sheet 9 of 9**



**US Route 67
Re-Evaluation**

Job No. 325220170
 Drawn By: BSM
 Reviewed By: RLL
 Date: 9/23/2020



The map shown here has been created with all due and reasonable care and is strictly for use with Wood Projects. This map has not been certified by a licensed land surveyor, and any third party use of this map comes without warranties of any kind. Wood assumes no liability, direct or indirect, whatsoever for any such third party or unintended use.

M:\GIS\MODOT_Env\2020_Env\US67_Env\US67_Env\Map_Series_Environmental_2020.mxd