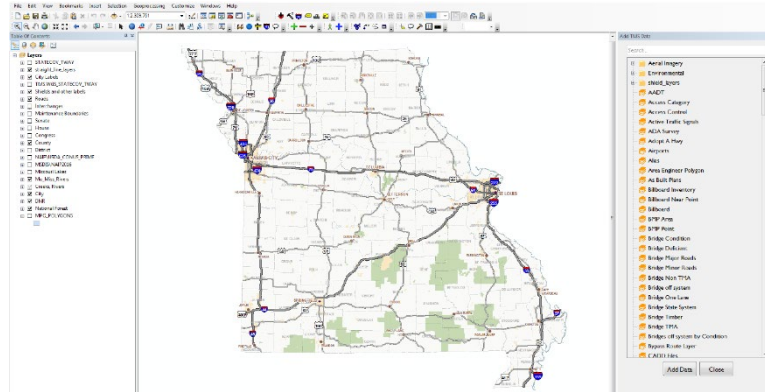




Add TMS Data Tool [Video](#)



Description

The Add TMS Data Tool is a custom tool inside of ArcMap, a mapping software that can be used to view geospatial data. This new tool is an updated version of an older tool that coincided with the MoDOT-wide upgrade to a new version of ArcMap. The tool provides a quick and easy way for users to add different TMS data layers to maps, such as Annual Average Daily Traffic, bridge data and speed limit. When a user activates the tool, a list of different data layers available to the user docks on the side of the map. The list is searchable and has folders that contain different categories of data. Users simply select the data layer they want to add from the list and then click a button to automatically add that data to the map. The data layers added into the map have already been symbolized and a legend is provided to the user along with the layer. These layers are completely customizable after a user adds them to a map in order to give the user control of how they want to see the data. This tool also works with the hyperlink tool inside of ArcMap. Any layer that is using data from one of MoDOT's TMS inventories is linked up to that inventory's web application. If a user adds one of these data layers to the map, they can use the hyperlink tool to click on a piece of data and it will automatically open the web application to the data record the user clicked on. The Add TMS Data Tool gives anyone at MoDOT who uses ArcMap quick and easy access to display 200 plus different TMS data layers.

Benefit

The Add TMS Data tool saves time in multiple ways. The ArcMap upgrade changed the way that data is usually added to the map. Previously, adding data to a map would work fairly similar to the way this tool does, but with the caveat of having to connect to a database through ArcMap and knowing the right table name they want to get data from. With the upgraded tool there is no need to know those complex details or to be connected to a database through ArcMap to use the tool or the layers it provides. The new tool adds layers with the click of a button. Additionally, any new data layers can be created and easily put into the tool's list.

The Add TMS Data tool simplifies the task of adding TMS data to maps. The old tool had multiple layers of categories to click through before getting to the layer that you wanted to add. With the new tool's search box and clearly named data layers, users can quickly find what they need. It is designed to look very similar to Windows Explorer so all users should be familiar with how the data layers are presented in the tool. The new tool's list of layers docks to the side of the map allowing for it to be available to the user while they are working on the map. The new Add TMS Data tool will allow anyone to quickly and simply add TMS data layers to a map.

Materials and Labor

There were no material costs and a total of 12 hours of labor.

For More Information Contact

Central Office, Transportation Planning

Alexander Schroeder at alexander.schroeder@modot.mo.gov or 573-526-5861. Additional contacts: James Whaley.

Additional information, photos or videos can be seen by accessing Innovations Challenge SharePoint page at: <http://sp/sites/tp/planpol/SitePages/InnovationHome.aspx>