

ADDENDUM NO. 2

Issued to all bid document holders of record
January 21, 2026

Project: **CPKC Blue Ridge Boulevard Bridge Replacement and Roadway Widening
TAP-3322(417), STBG-3322(421), Earmark 3322(418)**

This addendum forms a part of the Contract described above. The original Contract Documents and, any prior addenda remain in full force and effect except as modified by the following which shall take precedence over any contrary provisions in the prior documents.

1) Bid Document 1

- A. Revised Plan Sheet Traffic Control Detour Plan Sheets: Updated special sign sizes, new layouts, signs on the second detour sheet were modified, with several signs added.
- B. Revised Plan Sheet Summary of Quantities: The new Construction Signs quantity is 502 SF.
- C. Revised Proposal – Roadway Quantities: The new Construction Signs quantity is 502 SF.

Each bidder shall acknowledge receipt of this addendum by affixing his signature below, by noting this addendum on Bid Document 1, and by attaching this addendum to his Bid.

Public Works Department
City of Grandview
1200 Main
Grandview, MO 64030

* * * * *

ACKNOWLEDGEMENT

The undersigned acknowledge receipt of this addendum and the Bid submitted is in accordance with information, instructions, and stipulations set forth herein.

Bidder: _____

By: _____

Date: _____

NOTES

1. THE LOCATIONS OF THE DETOUR SIGNS ON THIS PLAN ARE SHOWN IN AN APPROXIMATE MANNER ONLY. UNLESS OTHERWISE SHOWN, THE TYPICAL APPROXIMATE PLACEMENT FOR VARIOUS SIGNS SHALL BE AS FOLLOWS:

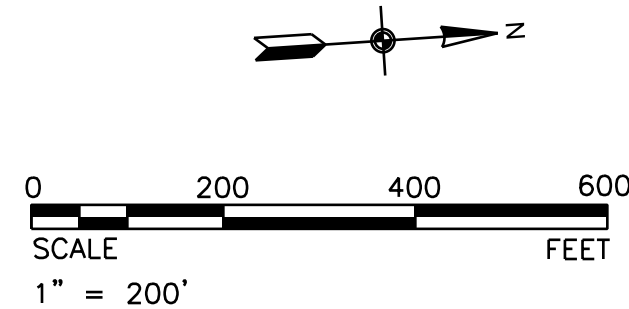
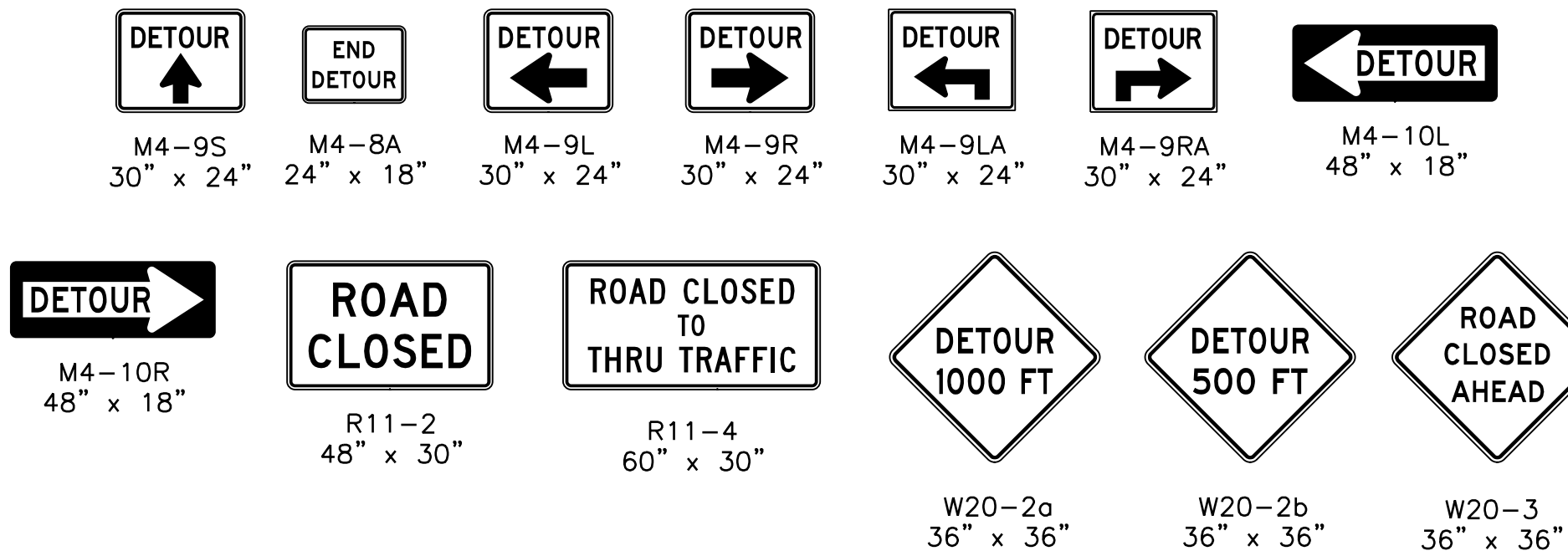
- DETOUR ARROWS: AT THE NEAR RIGHT-HAND CORNER OF THE INTERSECTION
- ADVANCE DETOUR ARROWS: 150'-300' IN ADVANCE OF THE DIRECTIONAL ASSEMBLY
- END DETOUR ASSEMBLY: 100' IN ADVANCE OF OR BEYOND THE ADJACENT INTERSECTION
- BLUE RIDGE BOULEVARD CLOSED AHEAD SIGNS: 500' IN ADVANCE OF THE DOWNSTREAM WORK ZONE SIGN

OTHER SIGNS SHALL BE PLACED AT THE APPROXIMATE LOCATION SHOWN ON THE PLAN AND SHALL BE FIELD ADJUSTED, IF NECESSARY, TO AVOID CONFLICTS WITH EXISTING SIGNS. THE DESIRED MINIMUM SPACING BETWEEN ADJACENT SIGNS IS 150 FEET. THE CONTRACTOR SHALL COORDINATE THE ACTUAL LOCATION FOR ALL PROPOSED TRAFFIC CONTROL DEVICES WITH THE ENGINEER IN CHARGE OF CONSTRUCTION.

2. TYPE III BARRICADES SHOWN FOR ROADWAY CLOSURES SHALL BE USED TO COMPLETELY CLOSE ACCESS TO THE ROADWAY AND/OR SHOULDERS AT THESE POINTS. THE CONTRACTOR SHALL SECURE THE BARRICADES IN SUCH A MANNER THAT THESE DEVICES CANNOT BE EASILY MOVED BY THE PUBLIC. BARRICADES SHALL BE ERECTED AT THE NEAREST ADJACENT COMMERCIAL DRIVEWAY TO THE RAILROAD BRIDGE.

3. TYPE III BARRICADES PRIOR TO ROADWAY CLOSURES SHALL BE STAGGERED TO ALLOW LOCAL TRAFFIC ONLY AND DISCOURAGE THROUGH TRAFFIC.

SIGN LEGEND



LEGEND

- TYPE III BARRICADE WITH SIGN
- TRAFFIC CONTROL SIGN
- AREA OF ROAD CLOSURE

ORDER OF OPERATIONS

PHASE 1 - CONSTRUCTION
1. INSTALL TEMPORARY SHORING AT BRIDGE.
2. CONDUCT GRADING FOR BRIDGE 6, CAP.
3. CONSTRUCT FOUNDATIONS FOR BENTS, EXCEPT FOR BENT NO. 3

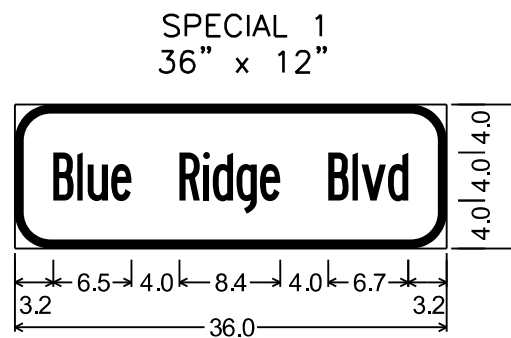
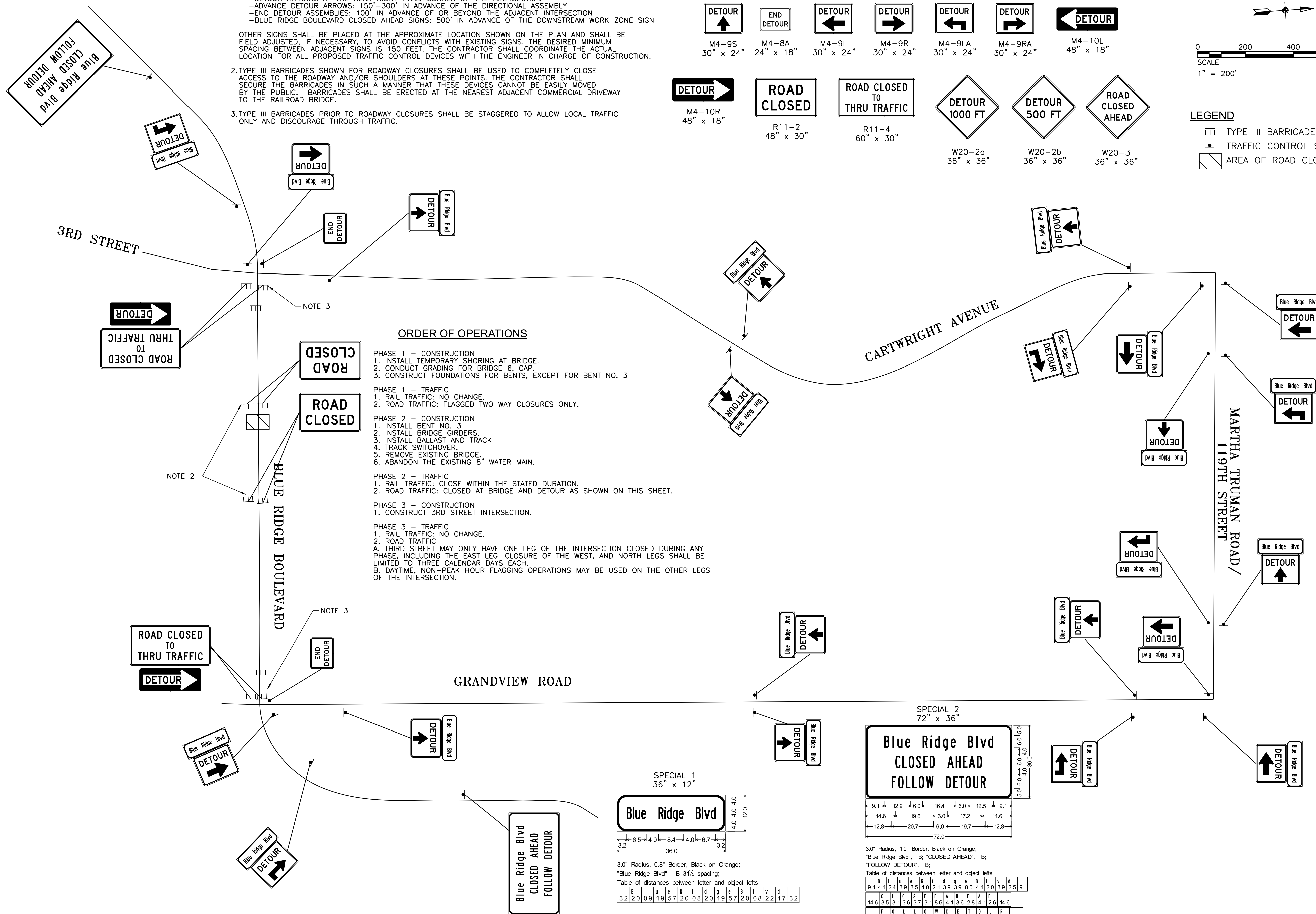
PHASE 1 - TRAFFIC
1. RAIL TRAFFIC: NO CHANGE.
2. ROAD TRAFFIC: FLAGGED TWO WAY CLOSURES ONLY.

PHASE 2 - CONSTRUCTION
1. INSTALL BENT NO. 3
2. INSTALL BRIDGE GIRDERS.
3. INSTALL BALLAST AND TRACK
4. TRACK SWITCHOVER.
5. REMOVE EXISTING BRIDGE.
6. ABANDON THE EXISTING 8" WATER MAIN.

PHASE 2 - TRAFFIC
1. RAIL TRAFFIC: CLOSE WITHIN THE STATED DURATION.
2. ROAD TRAFFIC: CLOSED AT BRIDGE AND DETOUR AS SHOWN ON THIS SHEET.

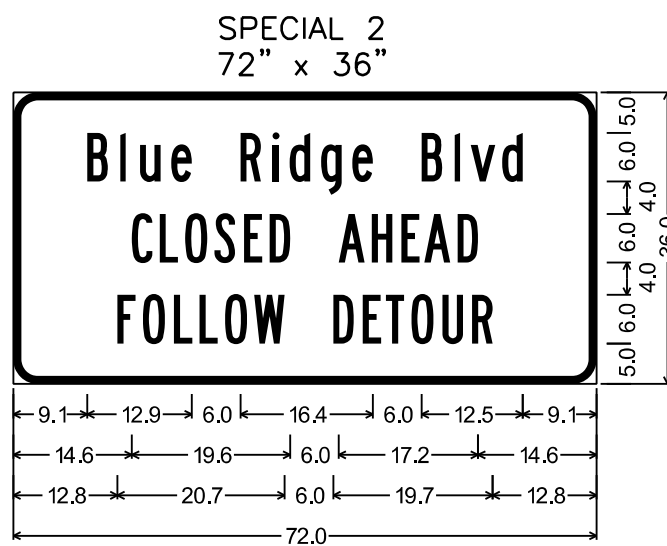
PHASE 3 - CONSTRUCTION
1. CONSTRUCT 3RD STREET INTERSECTION.

PHASE 3 - TRAFFIC
1. RAIL TRAFFIC: NO CHANGE.
2. ROAD TRAFFIC
A. THIRD STREET MAY ONLY HAVE ONE LEG OF THE INTERSECTION CLOSED DURING ANY PHASE, INCLUDING THE EAST LEG. CLOSURE OF THE WEST, AND NORTH LEGS SHALL BE LIMITED TO THREE CALENDAR DAYS EACH.
B. DAYTIME, NON-PEAK HOUR FLAGGING OPERATIONS MAY BE USED ON THE OTHER LEGS OF THE INTERSECTION.



3.0" Radius, 0.8" Border, Black on Orange;
"Blue Ridge Blvd", B 3 1/2 spacing;
Table of distances between letter and object lefts

B	I	U	E	R	I	D	G	E	B	I	V	D		
3.2	2.0	0.9	1.9	5.7	2.0	0.8	2.0	1.9	5.7	2.0	0.8	2.2	1.7	3.2



3.0" Radius, 1.0" Border, Black on Orange;
"Blue Ridge Blvd", B; "CLOSED AHEAD", B;
"FOLLOW DETOUR", B;

Table of distances between letter and object lefts

B	I	U	E	R	I	D	G	E	B	I	V	D		
9.1	4.1	2.4	3.9	8.5	4.0	2.1	3.9	3.9	8.5	4.1	2.0	3.9	2.5	9.1
C	L	O	S	E	D	A	H	E	A	D				
14.6	3.5	3.1	3.6	3.7	3.1	8.6	4.1	3.6	2.8	4.1	2.6	14.6		
F	O	L	L	O	W	D	E	T	O					
12.8	3.2	3.8	3.2	3.1	3.6	9.8	3.6	2.9	3.1	3.9	3.6	2.6	12.8	

TRANSYSTEMS

MO STATE CERTIFICATE
OF AUTHORITY # 273 ENGINEERING
2400 PERSHING ROAD
SUITE 400
KANSAS CITY, MO 64108
PHONE: (816) 329-8600
FAX: (816) 329-8602

CONSULTANTS:

R-1402-BLUE RIDGE-(11)
TAP-3322(417)
STBG-3322(421)
EARMARK 3322(418)

GRANDVIEW, MISSOURI

BLUE RIDGE BOULEVARD



REVISIONS:	MARK	DATE	DESCRIPTION

PROJ NO: P101060145
SCALE: 1" = 200'
DATE: 1/21/2026
DESIGNED BY: KMM
DRAWN BY: KMM
CHECKED BY: JUS

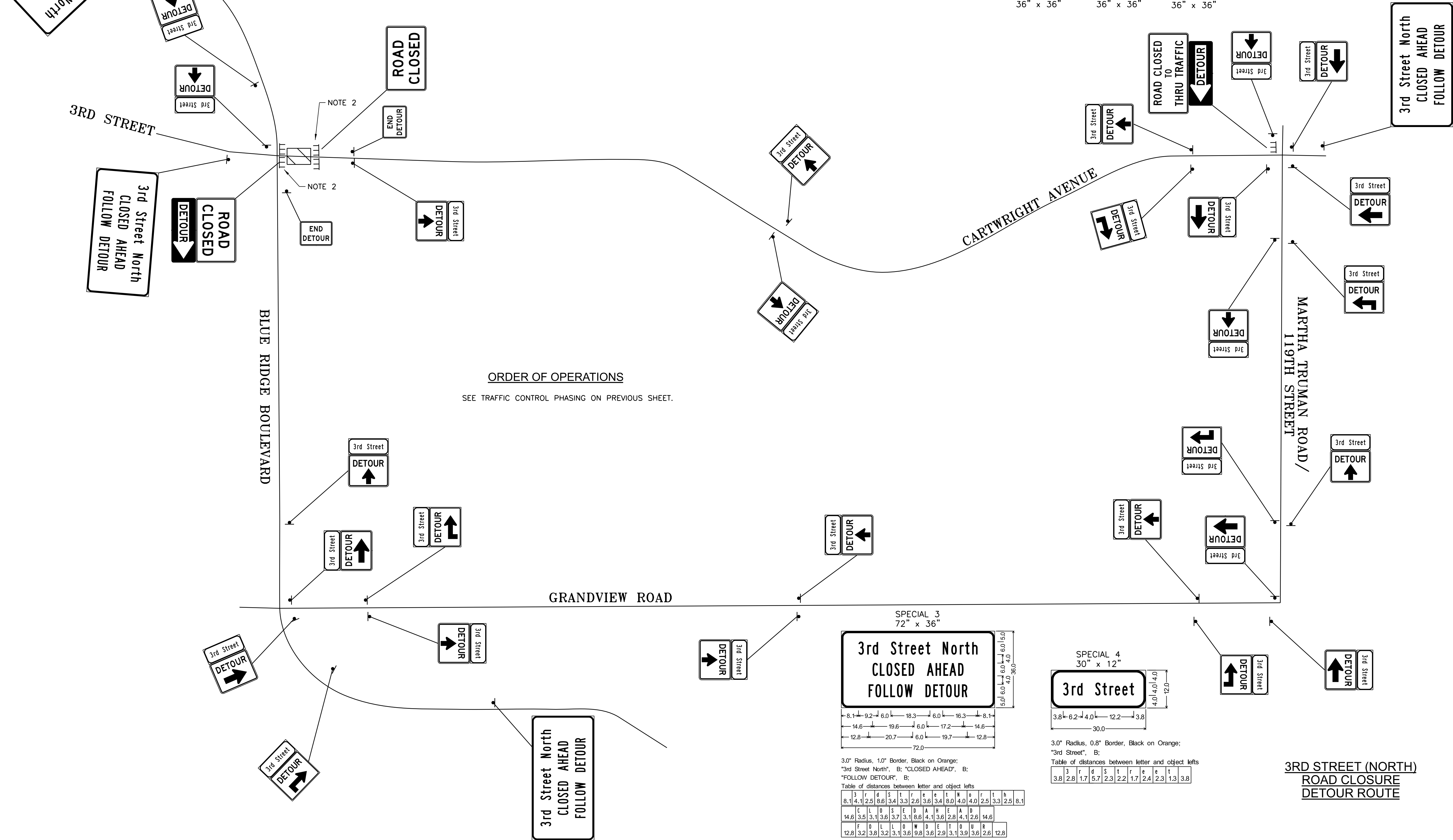
SHEET TITLE:

TRAFFIC CONTROL
DETOUR PLAN

SHEET NO.

14

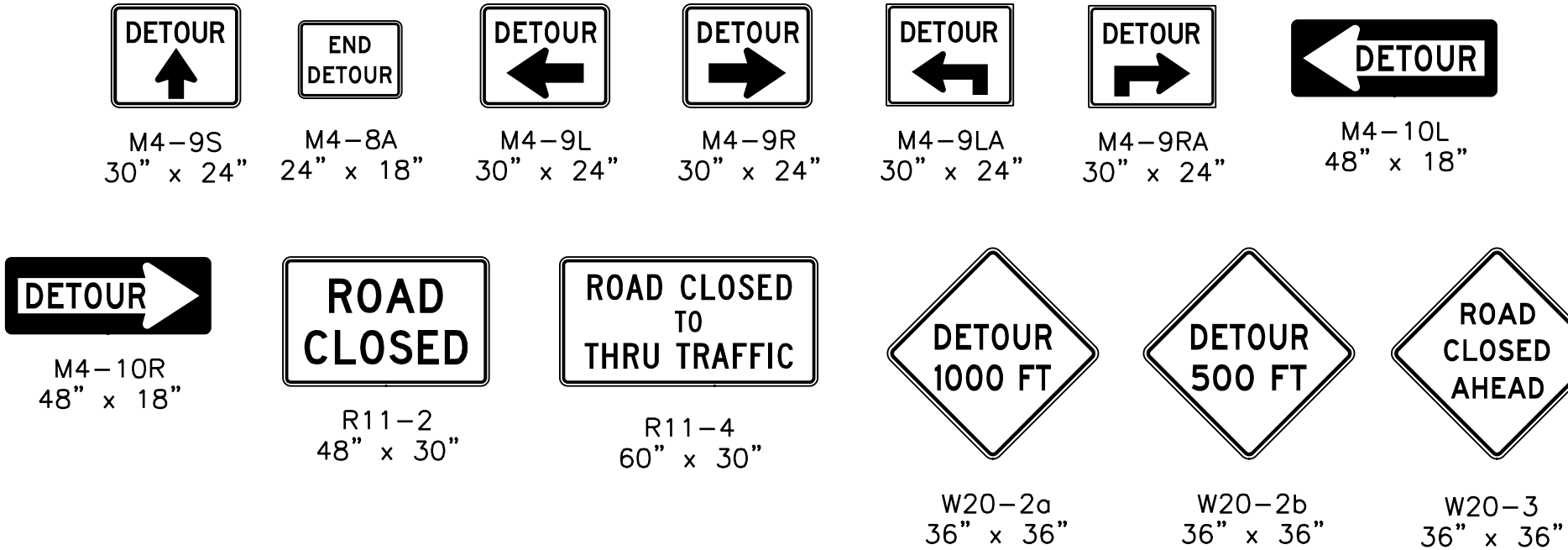
SHEET 14 OF 47



NOTES

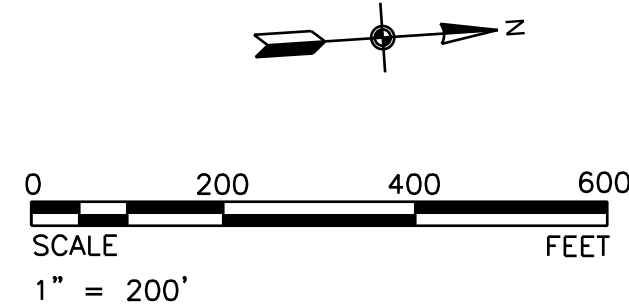
- THE LOCATIONS OF THE DETOUR SIGNS ON THIS PLAN ARE SHOWN IN AN APPROXIMATE MANNER ONLY. UNLESS OTHERWISE SHOWN, THE TYPICAL APPROXIMATE PLACEMENT FOR VARIOUS SIGNS SHALL BE AS FOLLOWS:
 - DETOUR ARROWS: AT THE NEAR RIGHT-HAND CORNER OF THE INTERSECTION
 - ADVANCE DETOUR ARROWS: 150'-300' IN ADVANCE OF THE DIRECTIONAL ASSEMBLY
 - END DETOUR ASSEMBLIES: 100' IN ADVANCE OF OR BEYOND THE ADJACENT INTERSECTION
 - BLUE RIDGE BOULEVARD CLOSED AHEAD SIGNS: 500' IN ADVANCE OF THE DOWNSTREAM WORK ZONE SIGN
- OTHER SIGNS SHALL BE PLACED AT THE APPROXIMATE LOCATION SHOWN ON THE PLAN AND SHALL BE FIELD ADJUSTED, IF NECESSARY, TO AVOID CONFLICTS WITH EXISTING SIGNS. THE DESIRED MINIMUM SPACING BETWEEN ADJACENT SIGNS IS 150 FEET. THE CONTRACTOR SHALL COORDINATE THE ACTUAL LOCATION FOR ALL PROPOSED TRAFFIC CONTROL DEVICES WITH THE ENGINEER IN CHARGE OF CONSTRUCTION.
- TYPE III BARRICADES SHOWN FOR ROADWAY CLOSURES SHALL BE USED TO COMPLETELY CLOSE ACCESS TO THE ROADWAY AND/OR SHOULDERS AT THESE POINTS. THE CONTRACTOR SHALL SECURE THE BARRICADES IN SUCH A MANNER THAT THESE DEVICES CANNOT BE EASILY MOVED BY THE PUBLIC.
- TYPE III BARRICADES PRIOR TO ROADWAY CLOSURES SHALL BE STAGGERED TO ALLOW LOCAL TRAFFIC ONLY AND DISCOURAGE THROUGH TRAFFIC.

SIGN LEGEND



LEGEND

- TYPE III BARRICADE WITH SIGN
- TRAFFIC CONTROL SIGN
- AREA OF ROAD CLOSURE



ORDER OF OPERATIONS

SEE TRAFFIC CONTROL PHASING ON PREVIOUS SHEET.

TRANSYSTEMS
MO STATE CERTIFICATE
OF AUTHORITY # 273 ENGINEERING
2400 PERSHING ROAD
SUITE 400
KANSAS CITY, MO 64108
PHONE: (816) 329-8600
FAX: (816) 329-8602

CONSULTANTS:

R-1402-BLUE RIDGE-(11)
TAP-3322(417)
STBG-3322(421)
EARMARK 3322(418)

GRANDVIEW, MISSOURI

BLUE RIDGE BOULEVARD



REVISIONS:	MARK	DATE	DESCRIPTION

PROJ NO: P101060145
SCALE: 1" = 200'
DATE: 1/21/2026
DESIGNED BY: KMM
DRAWN BY: KMM
CHECKED BY: JUS

SHEET TITLE:

TRAFFIC CONTROL
DETOUR PLAN

SHEET NO.

15

SHEET 15 A OF 47

DESCRIPTION		U/M	QTY
ROADWAY CONSTRUCTION			
1.)	CONTRACTOR FURNISHED SURVEYING AND STAKING (ROADWAY)	LS	1
2.)	OFFICE FOR ENGINEER	LS	1
3.)	CONSTRUCTION SIGNS	SF	502
4.)	CHANNELIZER (TRIM LINE)	EA	250
5.)	TYPE III MOVABLE BARRICADE	EA	28
6.)	REMOVAL OF IMPROVEMENTS (ROADWAY)	LS	1
7.)	CLEARING, PRUNING, AND GRUBBING (ROADWAY)	ACRE	1
8.)	PAVEMENT MARKING REMOVAL	LF	182
9.)	PAVEMENT MARKING REMOVAL SYMBOLS	EA	3
10.)	SEDIMENT FENCE (APWA STRAW WATTLE)	LF	1,683
11.)	ROCK DITCH CHECK	LF	7
12.)	SEDIMENT REMOVAL	CY	24
13.)	INLET PROTECTION	EA	12
14.)	RIP RAP (24", D50=18")	SY	85
15.)	AGGREGATE (MODOT TYPE UD-1)	CY	215
16.)	UNCLASSIFIED EXCAVATION (ROADWAY)	CY	4,363
17.)	EMBANKMENT (ROADWAY)	CY	1,768
18.)	BORROW (CONTRACTOR FURNISHED) (ROADWAY)	CY	2,595
19.)	4" AGGREGATE BASE	SY	909
20.)	ASPHALTIC CONCRETE BASE (10 IN.) (PG 64-22) (APWA TYPE 5)	SY	5,904
21.)	ASPHALTIC CONCRETE SURFACE (2 IN.) (PG 64-22) (APWA TYPE 5)	SY	6,271
22.)	2" COLD MILL	SY	367
23.)	CONCRETE PAVEMENT (12 IN. NON-REINFORCED)	SY	30
24.)	CONCRETE PAVEMENT (8 IN. NON-REINF)	SY	852
25.)	CONCRETE CURB RAMP, 6 IN.	SY	209
26.)	TRUNCATED DOMES	SF	70
27.)	INLET MODIFICATION (SPECIAL)	EA	3
28.)	ADJUSTING MANHOLE	EA	5
29.)	ADJUSTING MANHOLE (BRICK)	EA	1
30.)	ADJUSTING MANHOLE (SPECIAL)	EA	1
31.)	UNDERDRAIN (APWA)	LF	150
32.)	48 IN. DECORATIVE PEDESTRIAN FENCE (STRUCTURES)	LF	61
33.)	8 IN. CONCRETE MEDIAN STRIP (STAMPED) (RED STAINED)	SY	39
34.)	CONCRETE SIDEWALK, 4 IN.	SY	436
35.)	CONCRETE TRAIL, 6 IN	SY	874
36.)	4 IN. CONCRETE CAP	SY	129
37.)	CURB AND GUTTER, APWA TYPE CG-1	LF	2,285
38.)	BARRIER TRANSITION, MODOT TYPE D	LF	80
39.)	CONCRETE TRAFFIC BARRIER, MODOT TYPE D (MODIFIED) (FORM LINER) (RED STAINED)	LF	186
40.)	INTEGRAL CURB (6 IN. HEIGHT AND UNDER) TYPE A	LF	185
41.)	CLASS B CONCRETE (RETAINING WALLS)	CY	56
42.)	5X5' APWA FIELD INLET	EA	1
43.)	APWA GRATE INLET (DOUBLE)	EA	1
44.)	10X4' APWA TYPE 2 CURB INLET	EA	2
45.)	8X3.3' APWA TYPE 2 CURB INLET	EA	4
46.)	5X3.3' APWA TYPE 2 CURB INLET	EA	4
47.)	4' DIA. MANHOLE (SHALLOW)	EA	1
48.)	REPLACE 12X3' CURB INLET LID AND THROAT	EA	1
49.)	10 IN. CPP	LF	15
50.)	15 IN. RCP	LF	551
51.)	18 IN. RCP	LF	42
52.)	24 IN. RCP	LF	287
53.)	30 IN. RCP	LF	29
54.)	10 IN. CPP FLARED END SECTION	EA	1
55.)	15 IN. RCP FLARED END SECTION	EA	2
56.)	24 IN. RCP FLARED END SECTION	EA	4
57.)	30 IN. RCP FLARED END SECTION	EA	1
58.)	TEMPORARY SEEDING	ACRE	0.4
59.)	UTILITY CONDUIT (4 IN. METAL SPLIT, TRENCHED)	LF	115
60.)	PREFORMED THERMOPLASTIC PAVEMENT MARKING, 4 IN., WHITE	LF	465
61.)	PREFORMED THERMOPLASTIC PAVEMENT MARKING, 8 IN., WHITE	LF	667
62.)	PREFORMED THERMOPLASTIC PAVEMENT MARKING, 24 IN., WHITE	LF	384
63.)	PREFORMED THERMOPLASTIC PAVEMENT MARKING, 4 IN., YELLOW	LF	2,047
64.)	PREFORMED THERMOPLASTIC PAVEMENT MARKING, 24 IN., YELLOW	LF	235
65.)	PREFORMED THERMOPLASTIC PAVEMENT MARKING, SYMBOLS, WHITE	EA	7
66.)	2.0 IN. PSST POST - 12 GA.	LF	114
67.)	DRIVEN POST ANCHOR FOR 2.0 IN. PSST - 7 GA.	EA	9
68.)	TRAFFIC SIGN (TYPE SHR2L-1)	SF	88.3
69.)	WATER METER REMOVAL	EA	4
70.)	FIRE HYDRANT REMOVAL	EA	2
71.)	WATER SERVICE LINE (3/4" TYPE K COPPER)	LF	396
72.)	WATER MAIN PIPE (6 IN., DIP-CLASS 52 WITH POLYWRAP)	LF	195
73.)	WATER MAIN PIPE (8 IN., DIP-CLASS 52 WITH POLYWRAP)	LF	1,140
74.)	LOCATE (TRACE) WIRE (COPPER)	LF	1731
75.)	6 IN. BEND (11.25 DEG)	EA	1
76.)	6 IN. BEND (45 DEG)	EA	6
77.)	6 IN. X 6 IN. TEE	EA	1
78.)	6 IN. GATE VALVE	EA	3
79.)	8 IN. X 6 IN. TEE	EA	1
80.)	8 IN. X 8 IN. TEE	EA	1
81.)	8 IN. X 6 IN. CROSS	EA	1
82.)	8 IN. GATE VALVE	EA	4
83.)	8 IN. BEND (11.25 DEG)	EA	1
84.)	8 IN. BEND (22.5 DEG)	EA	2
85.)	8 IN. BEND (45 DEG)	EA	20
86.)	FIELD LOK GASKETS	EA	100
87.)	CONCRETE STRADDLE BLOCK	EA	1
88.)	CONCRETE THRUST BLOCK	EA	32
89.)	WATER MAIN BACKFILL (SPECIAL) (FLOWABLE FILL TRENCH, VAR WIDTH, DEPTH)	LF	369
90.)	WATER MAIN CONNECTION (6 IN.) (WITH SOLID SLEEVE)	EA	3
91.)	WATER MAIN CONNECTION (8 IN.) (WITH SOLID SLEEVE)	EA	2
92.)	FIRE HYDRANT ASSEMBLY CONNECTION	EA	1
93.)	WATER METER CONNECTION (CORPORATION STOP, METER SETTER, AND TAP)	EA	1
94.)	WATER METER ASSEMBLY (WELL, SETTER, LID, AND COLLAR)	EA	4
95.)	WATER MAIN TESTING (PER PWSD #1 SPECS)	LS	1
96.)	WATER MAIN DISINFECTION	LS	1
97.)	AS-BUILT WATER MAIN PLANS	EA	1
98.)	MULCHING	ACRE	0.6
99.)	TURF TYPE TALL FESCUE SODDING	SY	1,416
100.)	SEEDING	ACRE	0.7

TRANSYSTEMS

MO STATE CERTIFICATE
OF AUTHORITY # 273 ENGINEERING

2400 PERSHONG ROAD
SUITE 400
KANSAS CITY, MO 64108
PHONE: (816) 329-8600
FAX: (816) 329-8602

CONSULTANTS:

R-1402-BLUE RIDGE-(11)
TAP-3322(417)
STBG-3322(421)
EARMARK 3322(418)

GRANDVIEW, MISSOURI



REVISIONS:		
MARK	DATE	DESCRIPTION

PROJ NO: P101060145

SCALE: 1" = 1'

DATE: 1/21/2026

DESIGNED BY: KMM

DRAWN BY: KMM

SHEET TITLE:

SUMMARY OF QUANTITIES

SHEET NO.

17

SHEET 17 OF 47

CITY OF GRANDVIEW
KCS Blue Ridge Blvd. Bridge Replacement and Roadway Widening

PROPOSAL

1. The undersigned Bidder declares that he has read the Specifications and other Contract Documents, has examined the site of the work and has determined for himself the conditions affecting the work, and he proposes and agrees if this Proposal is accepted, to provide at his own expense, all labor, insurance, superintendence, machinery, plant, equipment, tools, apparatus, appliances ready for its intended purpose, the entire work and all parts thereof described as included under the Contract herein bid upon, in the manner and items prescribed, including all work incidental thereto, according to the Specifications and such instructions as the Director of Public Works may give.
2. The undersigned bidder, in compliance with the advertisement for bids, hereby proposes to do the work called for in said Specifications and other contract documents at the following prices:

Bridge Quantities

Item No.	Description	Plan Quantity	Unit	Unit Price	=	Total
1	Mobilization / Demobilization	L.S.	1	\$	=	\$
2	Contractor Furnished Survey and Staking (Bridge)	L.S.	1	\$	=	\$
3	Structural Excavation	CU.YD.	3,284	\$	=	\$
4	Structural Backfill (End Bents)	CU. YD.	112	\$	=	\$
5	Rock Blanket	CU. YD.	209	\$	=	\$
6	Furnish and Drive H-Piles	L.F.	790	\$	=	\$
7	Pile Bracing	L.F.	640	\$	=	\$
8	Pile Points	EA	22	\$	=	\$
9	Steel Pipe Casing for Auger Piles	L.F.	301	\$	=	\$

SUBMIT PROPOSAL WITHIN BOUND BID DOCUMENTS

10	Auger Piles in Soil	L.F.	196	\$	=	\$
11	Auger Piles in Rock	L.F.	217	\$	=	\$
12	Cast-in-Place Concrete for Sockets	CU.YD.	71.1	\$	=	\$
13	Furnish and Install PS Concrete Girder	EA.	8	\$	=	\$
14	Furnish and Install PC Concrete Caps	EA.	3	\$	=	\$
15	Furnish and Install PC Concrete End Bents w/ Wingwalls	EA.	2	\$	=	\$
16	Deck Waterproofing	SQ.YD.	287.0	\$	=	\$
17	Deck Plates	EA.	20	\$	=	\$
18	Special Handrail	L.F.	337.0	\$	=	\$
19	Monument Including Concrete, Reinforcing Steel and Structural Steel	L.S.	1	\$	=	\$
20	Bridge Temporary Shoring	L.F.	112.0	\$	=	\$
21	Existing Bridge Demolition	L.S.	1	\$	=	\$
				TOTAL BRIDGE BID	=	\$

Track Quantities

Item No.	Description	Plan Quantity	Unit	Unit Price	=	Total
1	Mobilization	L.S.	1	\$	=	\$
2	Clearing and Grubbing, Heavily Wooded	AC.	5	\$	=	\$
3	Seeding	AC.	3	\$	=	\$
4	Excavation	CU. YD.	13,246	\$	=	\$

SUBMIT PROPOSAL WITHIN BOUND BID DOCUMENTS

5	Embankment	CU. YD	19,478	\$	=	\$
6	Erosion Control – Silt Fence	L.F.	1,974	\$	=	\$
7	Subballast (Contractor Furnish and Install – AR, OK, MO, KS)	CU. YD.	1,351	\$	=	\$
8	Track Construction	T.F.	1,310	\$	=	\$
9	Remove Track	T.F.	1,310	\$	=	\$
10	Track Shift – includes 50% new ballast and 30% tie replacement	T.F.	966	\$	=	\$
11	Surface and Line – includes 50% new ballast and 30% tie replacement	T.F.	253	\$	=	\$
12	Temporary Shoring	LS	1	\$	=	\$
13	Railroad Protective Insurance	LS	1	\$	=	\$
				TOTAL TRACK BID	=	\$

RCB Extension Quantities

Item No.	Description	Plan Quantity	Unit	Unit Price	=	Total
1	Mobilization	L.S.	1	\$	=	\$
2	Contractor Furnished Survey and Staking (RCB Extension)	L.S.	1	\$	=	\$
3	Culvert Cleanout	EA.	1	\$	=	\$
4	Class 3 Excavation	CU. YD.	65.2	\$	=	\$
5	Compacting Embankment	CU. YD.	39.1	\$	=	\$
6	Class B Concrete (Culverts)	CU. YD.	18.9	\$	=	\$
7	Reinforcing Steel (Culverts)	LBS	4,020	\$	=	\$
8	Class 3 Excavation in Rock	CU. YD.	7.2	\$	=	\$
9	Existing Culvert Removal	L.S.	1	\$	=	\$
				TOTAL RCB EXT. BID	=	\$

Roadway Quantities

Item No.	Description	Plan Quantity	Unit	Unit Price	=	Total
1	CONTRACTOR FURNISHED SURVEYING AND STAKING (ROADWAY)	LS	1	\$	=	\$
2	OFFICE FOR ENGINEER	LS	1	\$	=	\$
3	CONSTRUCTION SIGNS	SF	502	\$	=	\$
4	CHANNELIZER (TRIM LINE)	EA	250	\$	=	\$
5	TYPE III MOVABLE BARRICADE	EA	28	\$	=	\$
6	REMOVAL OF IMPROVEMENTS (ROADWAY)	LS	1	\$	=	\$
7	CLEARING, PRUNING, AND GRUBBING (ROADWAY)	ACRE	1	\$	=	\$
8	PAVEMENT MARKING REMOVAL	LF	182	\$	=	\$
9	PAVEMENT MARKING REMOVAL SYMBOLS	EA	3	\$	=	\$
10	SEDIMENT FENCE (APWA STRAW WATTLE)	LF	1,683	\$	=	\$
11	ROCK DITCH CHECK	LF	7	\$	=	\$
12	SEDIMENT REMOVAL	CY	24	\$	=	\$
13	INLET PROTECTION	EA	12	\$	=	\$
14	RIP RAP (24", D50=18")	SY	85	\$	=	\$
15	AGGREGATE (MODOT TYPE UD-1)	CY	215	\$	=	\$
16	UNCLASSIFIED EXCAVATION (ROADWAY)	CY	4,363	\$	=	\$
17	EMBANKMENT (ROADWAY)	CY	1,768	\$	=	\$
18	BORROW (CONTRACTOR FURNISHED) (ROADWAY)	CY	2,595	\$	=	\$

19	4" AGGREGATE BASE	SY	909	\$	=	\$
20	ASPHALTIC CONCRETE BASE (10 IN.) (PG 64-22) (APWA TYPE 5)	SY	5,904	\$	=	\$
21	ASPHALTIC CONCRETE SURFACE (2 IN.) (PG 64-22) (APWA TYPE 5)	SY	6,271	\$	=	\$
22	2" COLD MILL	SY	367	\$	=	\$
23	CONCRETE PAVEMENT (12 IN. NON-REINFORCED)	SY	30	\$	=	\$
24	CONCRETE PAVEMENT (8 IN. NON-REINF)	SY	852	\$	=	\$
25	CONCRETE CURB RAMP, 6 IN.	SY	209	\$	=	\$
26	TRUNCATED DOMES	SF	70	\$	=	\$
27	INLET MODIFICATION (SPECIAL)	EA	3	\$	=	\$
28	ADJUSTING MANHOLE	EA	5	\$	=	\$
29	ADJUSTING MANHOLE (BRICK)	EA	1	\$	=	\$
30	ADJUSTING MANHOLE (SPECIAL)	EA	1	\$	=	\$
31	UNDERDRAIN (APWA)	LF	150	\$	=	\$
32	48 IN. DECORATIVE PEDESTRIAN FENCE (STRUCTURES)	LF	61	\$	=	\$
33	8 IN. CONCRETE MEDIAN STRIP (STAMPED) (RED STAINED)	SY	39	\$	=	\$
34	CONCRETE SIDEWALK, 4 IN.	SY	436	\$	=	\$
35	CONCRETE TRAIL, 6 IN.	SY	874	\$	=	\$
36	4 IN. CONCRETE CAP	SY	129	\$	=	\$
37	CURB AND GUTTER, APWA TYPE CG-1	LF	2,285	\$	=	\$

SUBMIT PROPOSAL WITHIN BOUND BID DOCUMENTS

(2/21)

38	BARRIER TRANSITION, MODOT TYPE D	LF	80	\$	=	\$
39	CONCRETE TRAFFIC BARRIER, MODOT TYPE D (MODIFIED) (FORM LINER) (RED STAINED)	LF	186	\$	=	\$
40	INTEGRAL CURB (6 IN. HEIGHT AND UNDER) TYPE A	LF	185	\$	=	\$
41	CLASS B CONCRETE (RETAINING WALLS)	CY	56	\$	=	\$
42	5'X5' APWA FIELD INLET	EA	1	\$	=	\$
43	APWA GRATE INLET (DOUBLE)	EA	1	\$	=	\$
44	10'X4' APWA TYPE 2 CURB INLET	EA	2	\$	=	\$
45	8'X3.3' APWA TYPE 2 CURB INLET	EA	4	\$	=	\$
46	5'X3.3' APWA TYPE 2 CURB INLET	EA	4	\$	=	\$
47	4' DIA. MANHOLE (SHALLOW)	EA	1	\$	=	\$
48	REPLACE 12'X3' CURB INLET LID AND THROAT	EA	1	\$	=	\$
49	10 IN. CPP	LF	15	\$	=	\$
50	15 IN. RCP	LF	551	\$	=	\$
51	18 IN. RCP	LF	42	\$	=	\$
52	24 IN. RCP	LF	287	\$	=	\$
53	30 IN. RCP	LF	29	\$	=	\$
54	10 IN. CPP FLARED END SECTION	EA	1	\$	=	\$
55	15 IN. RCP FLARED END SECTION	EA	2	\$	=	\$
56	24 IN. RCP FLARED END SECTION	EA	4	\$	=	\$
57	30 IN. RCP FLARED END SECTION	EA	1	\$	=	\$

SUBMIT PROPOSAL WITHIN BOUND BID DOCUMENTS

(2/21)

58	TEMPORARY SEEDING	ACRE	0.4	\$	=	\$
59	UTILITY CONDUIT (4 IN. METAL SPLIT, TRENCHED)	LF	115	\$	=	\$
60	PREFORMED THERMOPLASTIC PAVEMENT MARKING, 4 IN., WHITE	LF	465	\$	=	\$
61	PREFORMED THERMOPLASTIC PAVEMENT MARKING, 8 IN., WHITE	LF	667	\$	=	\$
62	PREFORMED THERMOPLASTIC PAVEMENT MARKING, 24 IN., WHITE	LF	384	\$	=	\$
63	PREFORMED THERMOPLASTIC PAVEMENT MARKING, 4 IN., YELLOW)	LF	2,047	\$	=	\$
64	PREFORMED THERMOPLASTIC PAVEMENT MARKING, 24 IN., YELLOW	LF	235	\$	=	\$
65	PREFORMED THERMOPLASTIC PAVEMENT MARKING, SYMBOLS, WHITE	EA	7	\$	=	\$
66	2.0 IN. PSST POST - 12 GA.	LF	114	\$	=	\$
67	DRIVEN POST ANCHOR FOR 2.0 IN. PSST - 7 GA.	EA	9	\$	=	\$
68	TRAFFIC SIGN (TYPE SHR2L-1)	SF	88.3	\$	=	\$
69	WATER METER REMOVAL	EA	4	\$	=	\$
70	FIRE HYDRANT REMOVAL	EA	2	\$	=	\$
71	WATER SERVICE LINE (3/4" TYPE K COPPER)	LF	396	\$	=	\$
72	WATER MAIN PIPE (6 IN., DIP-CLASS 52 WITH POLYWRAP)	LF	195	\$	=	\$
73	WATER MAIN PIPE (8 IN., DIP-CLASS 52 WITH POLYWRAP)	LF	1,140	\$	=	\$
74	LOCATE (TRACE) WIRE (COPPER)	LF	1731	\$	=	\$
75	6 IN. BEND (11.25 DEG)	EA	1	\$	=	\$
76	6 IN. BEND (45 DEG)	EA	6	\$	=	\$

SUBMIT PROPOSAL WITHIN BOUND BID DOCUMENTS

(2/21)

77	6 IN. X 6 IN. TEE	EA	1	\$	=	\$
78	6 IN. GATE VALVE	EA	3	\$	=	\$
79	8 IN. X 6 IN. TEE	EA	1	\$	=	\$
80	8 IN. X 8 IN. TEE	EA	1	\$	=	\$
81	8 IN. X 6 IN. CROSS	EA	1	\$	=	\$
82	8 IN. GATE VALVE	EA	4	\$	=	\$
83	8 IN. BEND (11.25 DEG)	EA	1	\$	=	\$
84	8 IN. BEND (22.5 DEG)	EA	2	\$	=	\$
85	8 IN. BEND (45 DEG)	EA	20	\$	=	\$
86	FIELD LOK GASKETS	EA	100	\$	=	\$
87	CONCRETE STRADDLE BLOCK	EA	1	\$	=	\$
88	CONCRETE THRUST BLOCK	EA	32	\$	=	\$
89	WATER MAIN BACKFILL (SPECIAL) (FLOWABLE FILL TRENCH, VAR WIDTH, DEPTH)	LF	369			
90	WATER MAIN CONNECTION (6 IN.) (WITH SOLID SLEEVE)	EA	3			
91	WATER MAIN CONNECTION (8 IN.) (WITH SOLID SLEEVE)	EA	2			
92	FIRE HYDRANT ASSEMBLY CONNECTION	EA	1			
93	WATER METER CONNECTION (CORPORATION STOP, METER SETTER, AND TAP)	EA	1			
94	WATER METER ASSEMBLY (WELL, SETTER, LID, AND COLLAR)	EA	4			
95	WATER MAIN TESTING (PER PWSD #1 SPECS)	LS	1			

96	WATER MAIN DISINFECTION	LS	1			
97	AS-BUILT WATER MAIN PLANS	EA	1			
98	MULCHING	ACRE	0.6			
99	TURF TYPE TALL FESCUE SODDING	SY	1,416			
100	SEEDING	ACRE	0.7			
				TOTAL ROADWAY BID	=	\$

Items	Bids
Flagging Allowance (300 Days @ \$1,800/day)	\$ 540,000.00
Total Bridge Bid	\$
Total Track Bid	\$
Total RCB Extension Bid	\$
Total Roadway Bid	\$
Total Project Bid (Include Flagging Allowance in Total)	\$

All prospective bidders are required to submit unit prices and their extensions on all items included in the Proposal. In the event of an omitted extension or mistake in the extension total, the designated unit price amount shall govern to determine the corrected extension amount.

3. The Undersigned Bidder understands that the above quantities of work to be done are approximate only and are intended principally to serve as a guide in evaluating the bids.

4. The Undersigned agrees, upon written notice of the acceptance of this bid within sixty days after opening the bids, that they will execute the contract in accordance with the bids as accepted and give Performance and Payment Bond on the forms included herein within five (5) days after the prescribed forms are presented for signature.

5. Pursuant to RSMo Sec. 285.530, and as a condition of the award of a contract, all prospective bidders shall submit with their proposal 1) a sworn affidavit in the attached form that the bidder and all known subcontractors participate in E-Verify or other federal work authorization program as defined in RSMo Sec. 282.525(6) with respect to employees that will be working in connection with the contracted services and that the bidder and subcontractors will not knowingly employ any person who is an unauthorized alien in connection with the contracted services; and 2) documentation to establish that bidder and known subcontractors participate in E-Verify or other federal work authorization program as defined in RSMo Sec. 282.525(6). The affidavit requirement is met for any contractor or subcontractor that has submitted a suitable affidavit to the City of Grandview within the last calendar year. If awarded the contract, bidder will be required to provide the required affidavit and documentation with respect to all subcontractors not identified in the submitted proposal.

6. Bidders are informed that the project is subject to the requirements of RSMo Sec. 292.675, which requires all contractors and subcontractors doing work on the project to provide, and require its on-site employees to complete or hold documentation of prior completion of, a ten (10) hour course in construction safety and health approved by OSHA or a similar program approved by the Missouri of Labor and Industrial Relations which is at least as stringent as an approved OSHA program. The training must be completed within sixty (60) days of the date work on the project

commences. On-site employees found on the worksite without documentation of the required training shall have twenty (20) days to produce such documentation.

7. As an evidence of good faith in submitting this Proposal, the undersigned encloses either a cashier's check, a certified check drawn on an acceptable bank, or an acceptable Bid Bond in the amount of not less than five percent (5%) of the total amount of the bid which, in case he refuses or fails to accept an award and enter into a Contract and file the required bonds within the prescribed time, shall be forfeited to the City of Grandview, Missouri, as liquidated damages.

8. The Undersigned further agrees that if awarded the contract, he will commence the work in accordance with Section B of the Job Special Conditions and when the above described time restrictions are not conformed to, the contractor shall pay liquidated damages as specified in Section C of the Job Special Conditions.

9. The Undersigned hereby declares that the only parties interested in this Proposal are named herein, that the Proposal is made without collusion with any other person, firm or corporation, that no member of the City Board of Aldermen, officer or agent of the City of Grandview, Missouri, is directly or indirectly financially interested in this bid.

10. Addendum Numbers _____ were received and considered in the preparation of this Proposal.

The undersigned states that this Proposal is made in the character or capacity checked in the box, that he is the agent of, and is duly authorized to sign for:

(Legal Name of Firm)

(Fictitious Name of Firm, if applicable)

That the Proposal is signed with the full understanding of the plans, provisions, specifications, and the foregoing terms of the Proposal.

CHECK ONLY ONE

<input type="checkbox"/> ()	Missouri Individual	<input type="checkbox"/> ()	Foreign Individual
<input type="checkbox"/> ()	Missouri Partnership	<input type="checkbox"/> ()	Foreign Partnership
<input type="checkbox"/> ()	Missouri Limited Liability Corporation	<input type="checkbox"/> ()	Foreign Limited Liability Corporation Licensed in Missouri, incorporated in the state of
<input type="checkbox"/> ()	Missouri Corporation	<input type="checkbox"/> ()	Foreign Corporation Licensed in Missouri, incorporated in the state of

	CHECK IF APPLICABLE
<input type="checkbox"/> ()	Individual or Partnership, Missouri or Foreign, doing business in Missouri under fictitious name, registered in the office of Secretary of State.

Dated this _____ Day of _____, 20__.

Business Address _____

Phone No. ☐ () _____

Fax No. ☐ () _____

Tax I.D. No. _____

Email address _____

SIGNATURE OF BIDDER:

By: signature _____, print or type name below signature line

Title or Capacity: _____

(SEAL)

SUBMIT PROPOSAL WITHIN BOUND BID DOCUMENTS

Name, Title, and Address of all Partners/Principals (continue on separate sheet if necessary)

- 1) _____
- 2) _____
- 3) _____
- 4) _____
- 5) _____