

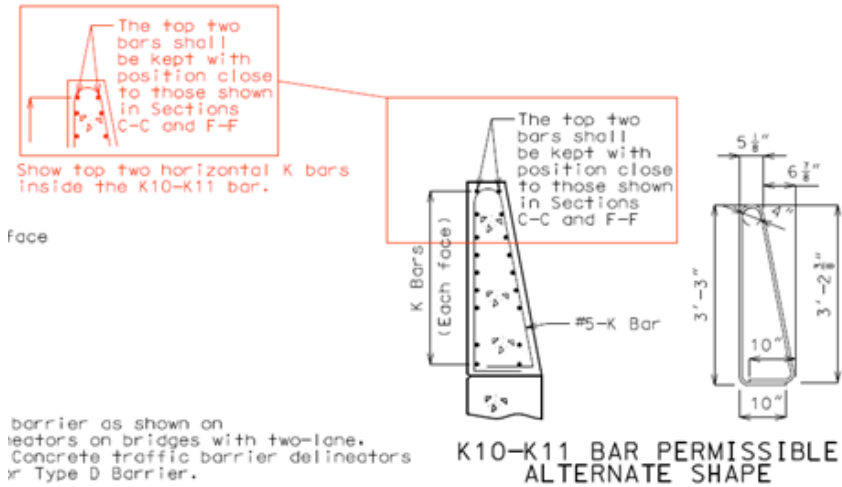
From: [Debra M. Beckwith](#)
To: [BROffice](#)
Subject: Revision to standard drawings BAR02-05 (Type D barrier at ends)
Date: Thursday, July 23, 2020 10:22:06 AM
Attachments: [image002.png](#)

Minor revision to show horizontal K bars INSIDE alternate K10-K11 bar shape.

The top two K bars in Type D barrier can be inside the K10-K11 permissible alternate shape because there is no interference with the rail attachment holes.

Effective date updated to July 2020 (was Apr. 2020), but there is no need to modify drawings that are already in use.

[\\ghdata024\ghq_ns\CO\BR\Development\Bridge_Standard_Drawings_History_StdDwgArchive2020toPresent](#)



Debbie M. Beckwith
Structural Specialist
Development Section
Bridge Division
MoDOT
(573)522-8718