

From: [Debra M. Beckwith](#)
To: [BR](#)
Subject: Advertisement (14-042a) Top strands for PS box beams
Date: Monday, March 2, 2020 8:44:46 AM
Attachments: [image001.png](#)
[image002.png](#)

The Standard Drawings have been updated as described below:

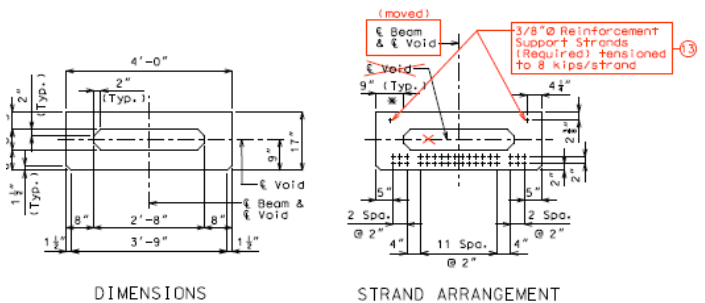
Implementation Statement: For jobs not submitted to Review

Revision Date	Items Revised	Description of Change
March 2020	EPG: NA	Added a note requiring 3/8" support strands for box beams that do not have top strands by design (see below). They are needed for support of the reinforcement cage.
	Standard Drawings: PSBXB01	
	MicroStation Cells: NA	Moved Half Elevation of Box Beam with vent pipe into the drawing and moved the one without vent pipe outside the border, since stream crossings are more common.
	Std. Specifications: NA	
	Standard Plans: NA	Created an alternate Elevation A-A for box beams with skewed ends (showing S5 & S6)

Follow links above for more information, or to view more details about this (or any) revision, use the [Revision Index Database](#).
 Instructions:

1. Select the Revision Index Database.
2. Select "Read Only" and Click "O.K."
3. Under Tables (left-hand side) double-click on Table1.
4. Scroll down to the bottom of the list to find the latest Revision.
5. Click on the link under the Effective Date to open the storage location for the Completed Revision.

Effective: [Apr 11 2019](#) Supersedes: [Mar. 2014 \(PSBXB01_spread\)](#)
 Mar. 2020 Apr 11 2019



⑬ Remove this note if top strands are included in strand arrangement by design.

Debbie M. Beckwith
 Structural Specialist
 Development Section
 Bridge Division
 MoDOT
 (573)522-8718