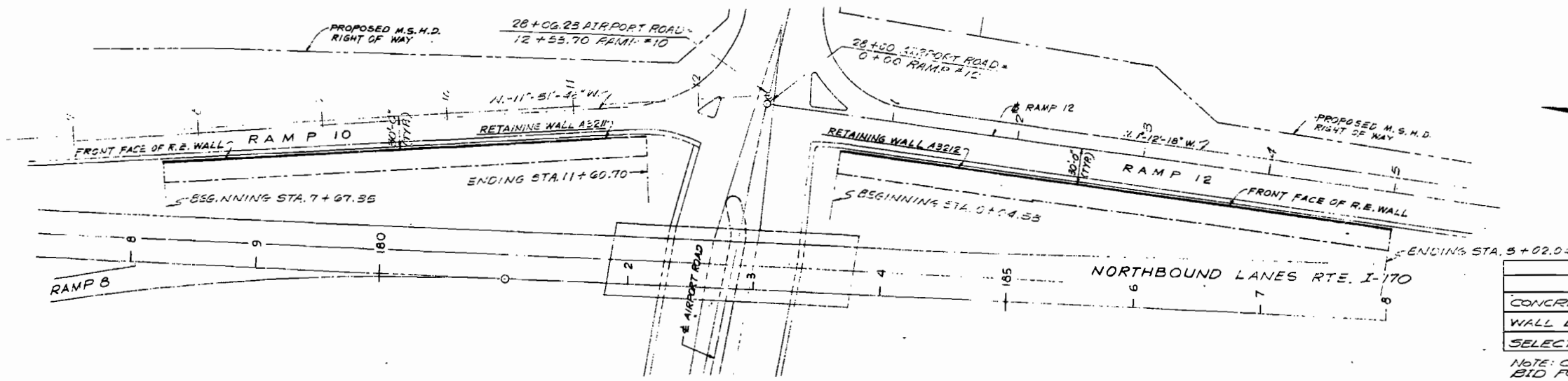


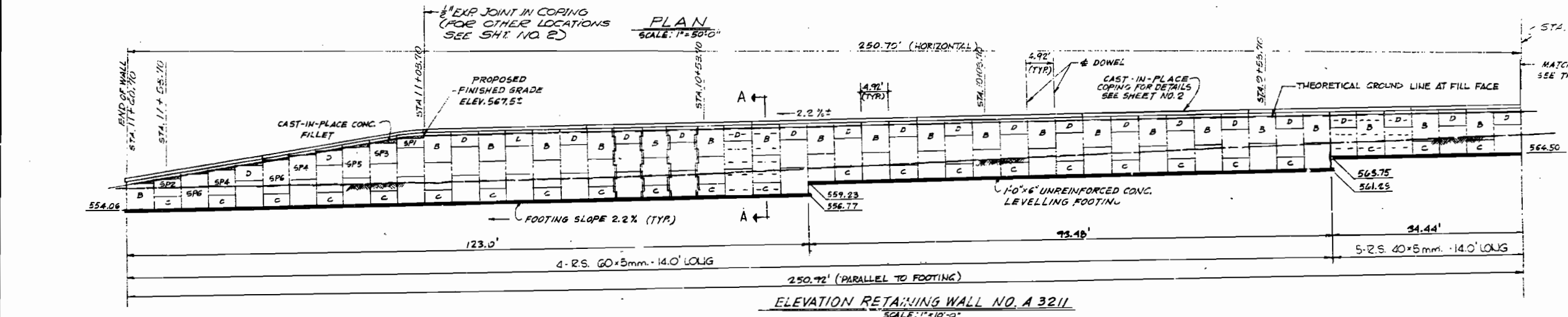
# MISSOURI HIGHWAY AND TRANSPORTATION COMMISSION

FED. POAD DIST. NO.	STATE	FED. AID PROJ. NO.	FISCAL YEAR	SHEET NO.	TOTAL SHEETS
5	MO.		19	102	

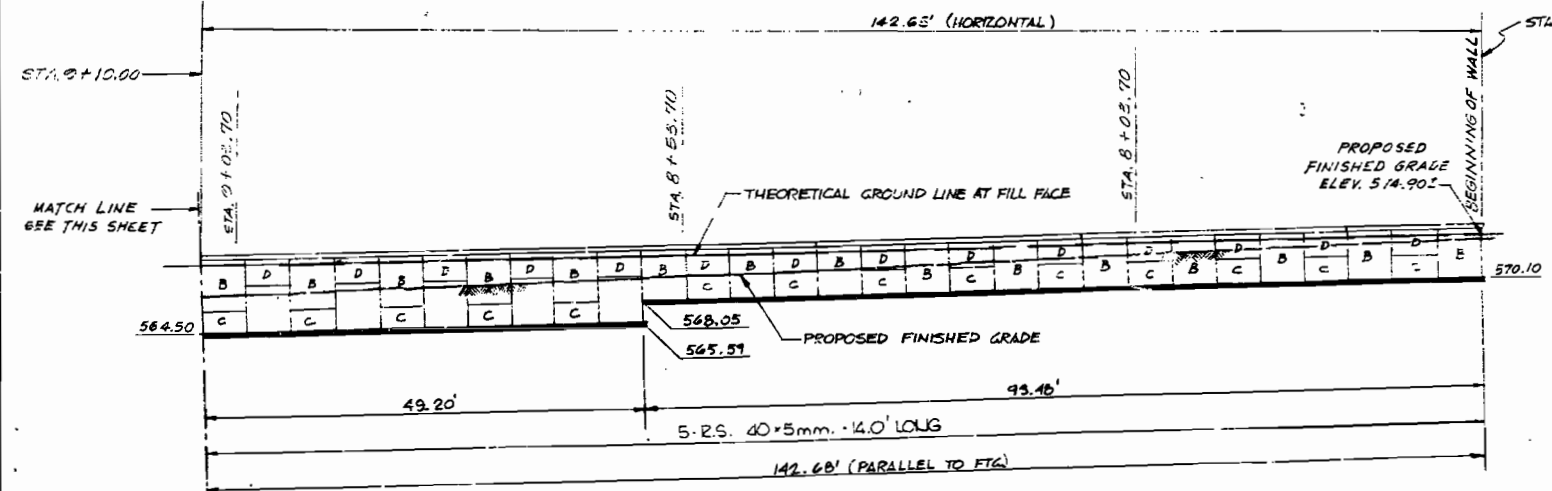


ITEM	ESTIMATED QUANTITIES		
	BP A-3211	BRA-3212	TOTAL
CONCRETE FACE PANELS	3292.2	4139.9	7432.1
WALL ERECTION	3292.2	4139.9	7432.1
SELECT GRANULAR BACKFILL CU. YDS.	1707	2127	3834

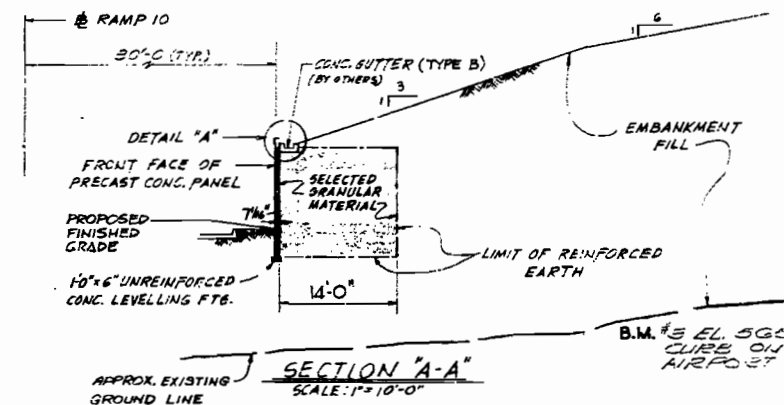
NOTE: CAST-IN-PLACE CONCRETE TO BE INCLUDED IN PRICE BID FOR OTHER ITEMS.



**ELEVATION RETAINING WALL NO. A 3211**  
SCALE: 1"=10'-0"



**ELEVATION RETAINING WALL NO. A 3212**  
SCALE: 1"=10'-0"



**SECTION 'A-A'**  
SCALE: 1"=10'-0"

- NOTES:**
1. ALL PANELS ARE TYPE "A" UNLESS OTHERWISE NOTED.
  2. ALL STATIONS ARE GIVEN ALONG RAMP 10.
  3. FOR PANEL DETAILS, SEE SHEET NO. 3 AND NO. 4.
  4. FOR ELEVATION OF R.E. WALL A 3212, SEE SHEET NO. 2.
  5. FOR DETAIL "A" SEE SHEET NO. 2.
  6. NUMBER OF REINF. STRIPS EQUAL TO NUMBER OF TIE STRIPS PER PANEL, SEE PANEL SCHEDULE.
  7. DASH LINES ON PANEL SURFACE INDICATE NUMBER OF REINF. STRIPS PER PANEL.

TYPE	THICKNESS	PANEL SCHEDULE										
		LD. TIE STRIPS	A	B	C	D	SP1	SP2	SP3	SP4	SP5	SP6
7 1/2"	2	-	-	21	36	1	-	-	-	-	-	-
	3	-	-	17	-	-	-	-	-	-	-	-
	4	47	18	-	-	-	1	1	2	1	-	-
	5	9	18	-	-	-	-	-	-	-	-	-
	6	-	-	-	-	-	-	-	-	-	-	2

REINFORCING STRIPS	
TYPE	LENGTH
40x5mm.	222
60x5mm.	372

WALL SURFACE AREA: 3,292.2 SQ. FT.  
CAST-IN-PLACE COPINGS: 400 ± LIN. FT.

**RETAINING WALLS ADJACENT TO RAMP 10 & 12**  
**STATE ROAD INTERCHANGE: U-725 AND AIRPORT ROAD**  
IN BERKELEY  
**PROJECT NO. I-170-5(15B)**  
**JOB NO. 6-U-725-21**  
ST. LOUIS

**STA. 7+67.35 A-3211**  
**STA. 0+64.53 A-3212**  
**RTE. I-170**  
**COUNTY**  
DATE February 1, 1977

DESIGNED MAY 1977  
DETAILED MAY 1977  
CHECKED MAY 1977

Note: This drawing is not to scale. Follow dimensions.

THIS DRAWING IS FURNISHED EXCLUSIVELY FOR THE USE OF THE MISSOURI HIGHWAY AND TRANSPORTATION COMMISSION AND IS NOT TO BE REPRODUCED OR TRANSMITTED IN ANY FORM OR BY ANY MEANS, ELECTRONIC OR MECHANICAL, INCLUDING PHOTOCOPYING, RECORDING, OR BY ANY INFORMATION STORAGE AND RETRIEVAL SYSTEM, WITHOUT THE WRITTEN PERMISSION OF THE MISSOURI HIGHWAY AND TRANSPORTATION COMMISSION. THE MISSOURI HIGHWAY AND TRANSPORTATION COMMISSION ASSUMES NO LIABILITY FOR ANY ERRORS OR OMISSIONS IN THIS DRAWING OR FOR ANY INFORMATION CONTAINED THEREIN.

SEE RELEVANT PLANS

Sheet No. 1 of 4

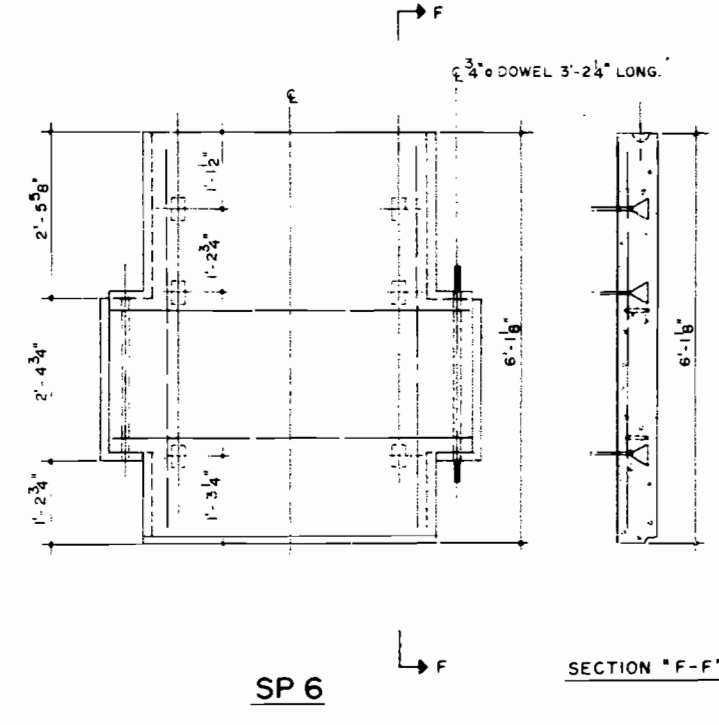
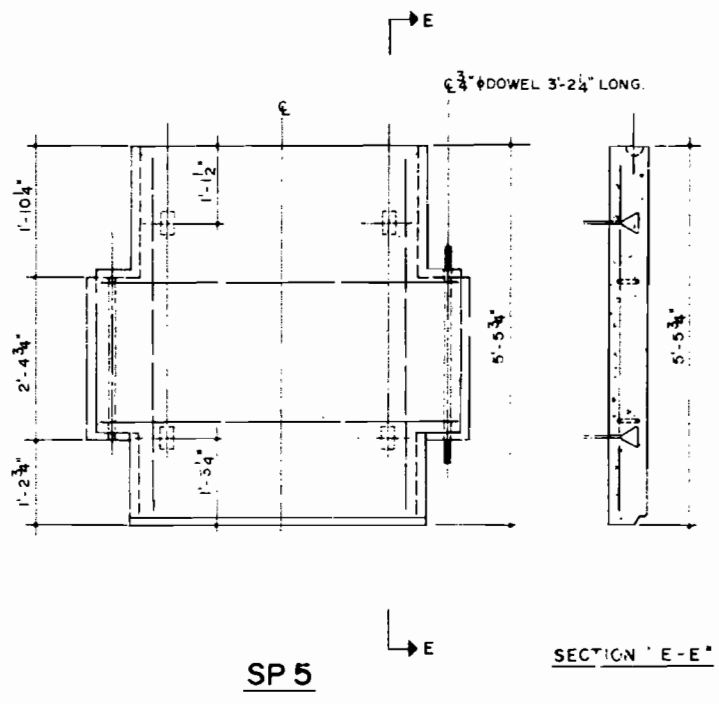
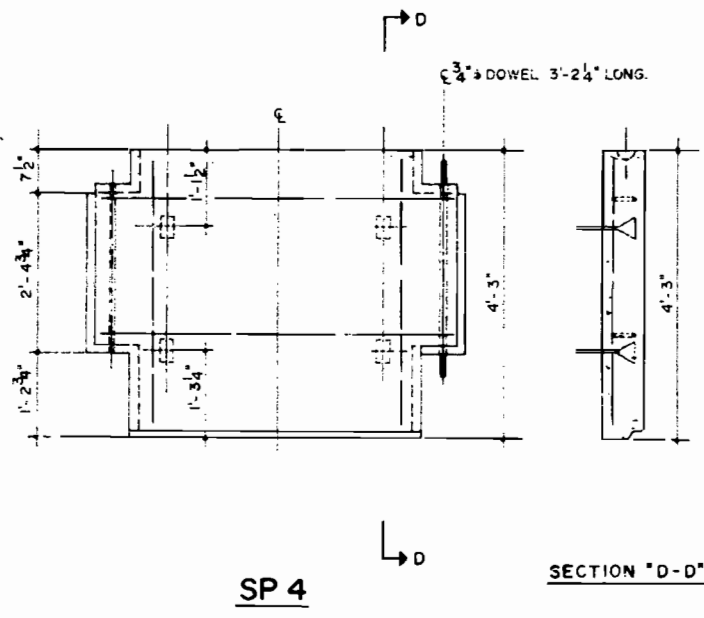
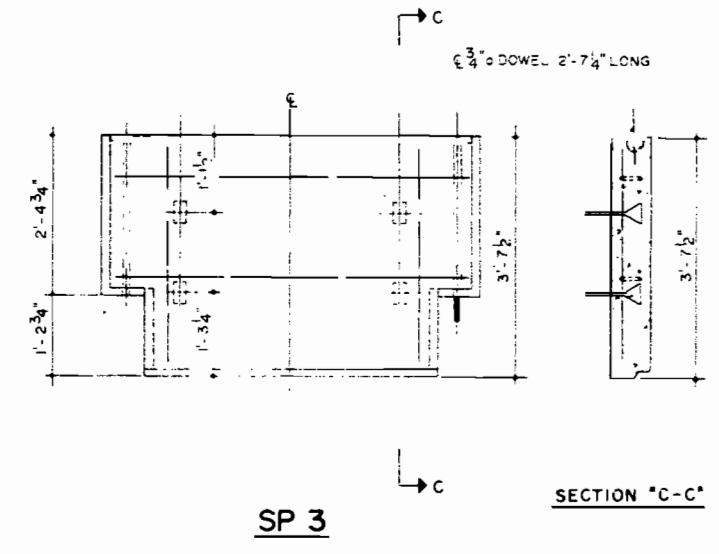
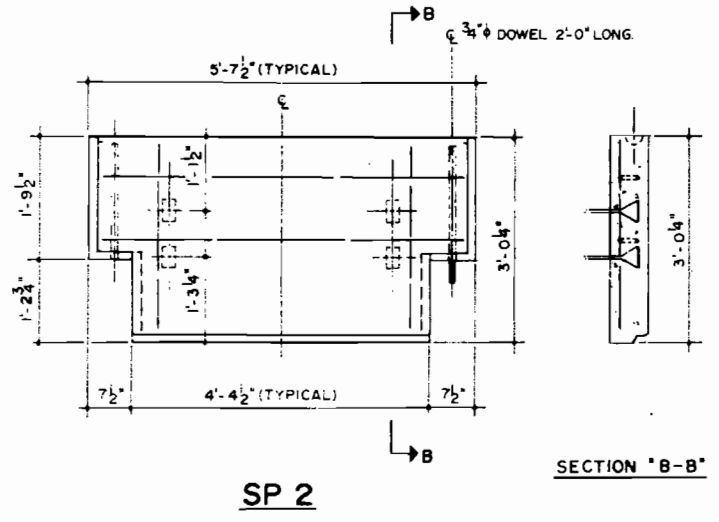
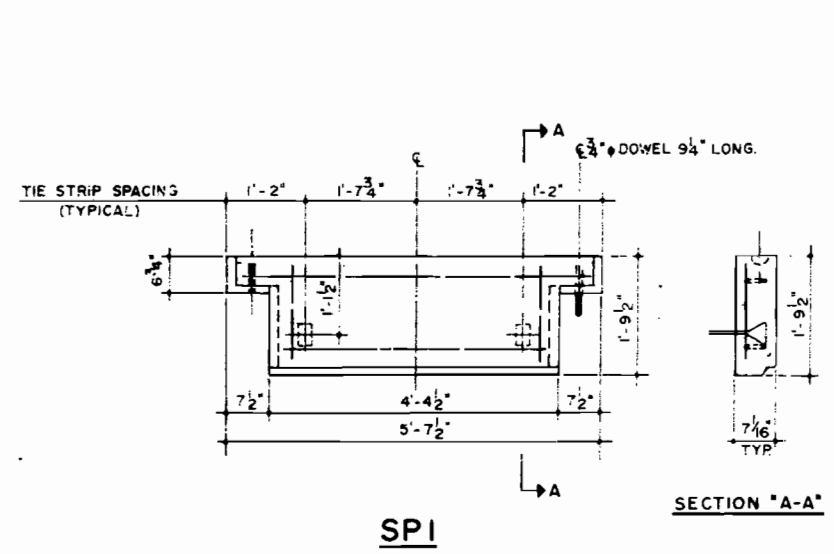
STD.  
STD.609CC  
A-3211  
A-3212





FED. ROAD DIST. NO.	STATE	FED. AID PROJ. NO.	FISCAL YEAR	SHEET NO.	TOTAL SHEETS
1	MO.		88	105	

105



PANEL SURFACE AREA	
TYPE	SQ. FT.
SP1	8.8
SP2	14.9
SP3	17.9
SP4	20.9
SP5	27.0
SP6	30.0

**SPECIAL PANEL DETAILS**

NOTE  
FOR DETAILS NOT SHOWN SEE DWG. 30F4

512  
 DETAILED May 1977  
 CHECKED May 1977

Note: This drawing is not to scale. Follow dimensions.

SEE OTHER PAGES

Sheet No. 4 of 4

THIS DRAWING IS FURNISHED EXCLUSIVELY FOR THE USE OF MISSOURI HIGHWAY DEPT. IN CONNECTION WITH THIS PROJECT. THE REINFORCED EARTH COMPANY IS EXCLUSIVE LICENSEE IN THE U.S. FOR REINFORCED EARTH COVERED UNDER U.S. PAT. 2,875,185 ISSUED TO HERMAN VESIL.

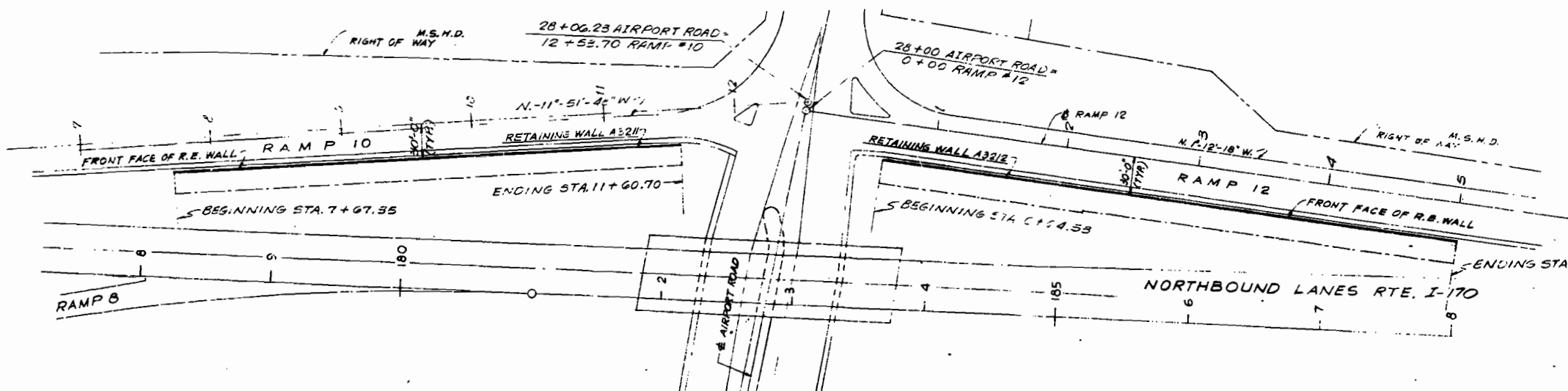
THIS DRAWING CONTAINS INFORMATION PROPRIETARY TO THE REINFORCED EARTH COMPANY, EXCEPT AS SPECIFICALLY AUTHORIZED IN WRITING BY THE REINFORCED EARTH COMPANY. PROVIDER OF THE DRAWING DOES NOT AFFRAME USE OF THE PATENTED OR PROPRIETARY INFORMATION CONTAINED THEREIN, NOR TRANSMISSION TO ANY OTHER ORGANIZATION OF THE DRAWING OR OF INFORMATION CONTAINED THEREIN.

ST LOUIS COUNTY

A-3211  
 A-3212

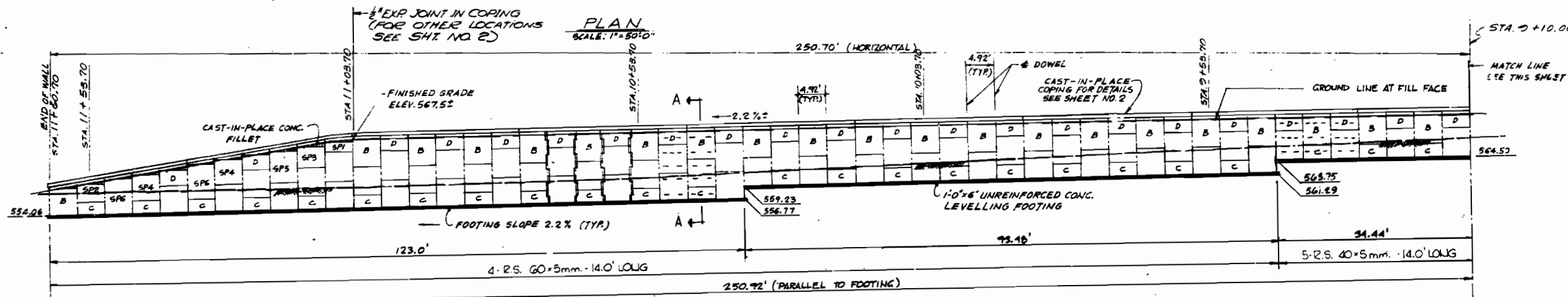
# MISSOURI HIGHWAY AND TRANSPORTATION COMMISSION

FED. ROAD DIST. NO.	STATE	FED. AID PROJ. NO.	FISCAL YEAR	SHEET NO.	TOTAL SHEETS
5	MO.		19	102	

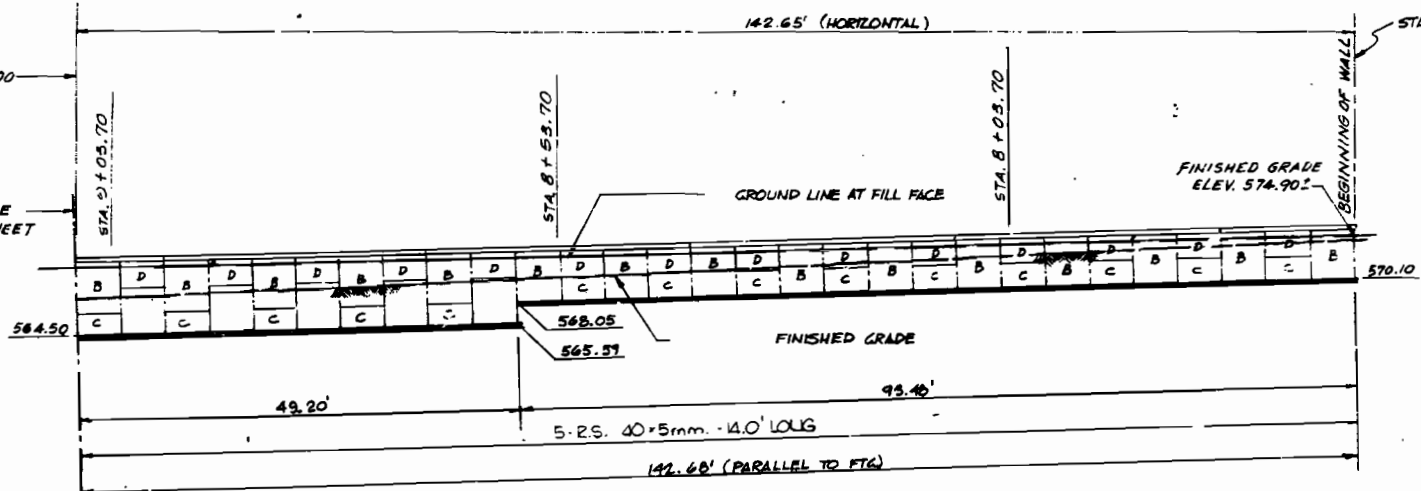


ITEM	FINAL QUANTITIES		
	BR.A3211	BR.A3212	TOTAL
CONCRETE FACE PANELS	3292.2	4139.9	7432.1
WALL ERECTION	3292.2	4139.9	7432.1
SELECT GRANULAR BACKFILL CU.YDS	1707	2147	3854

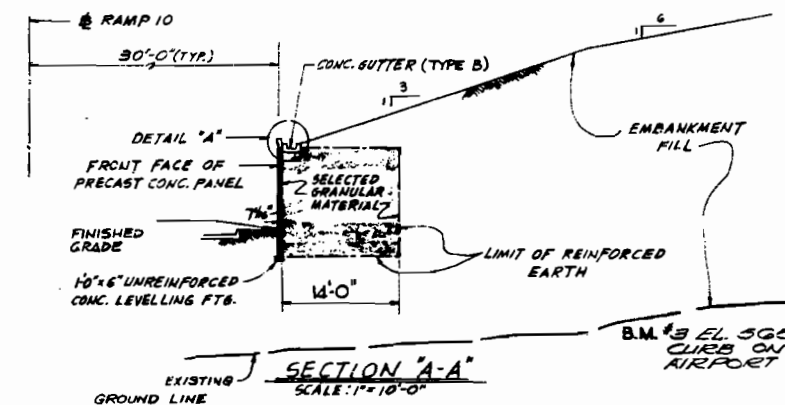
NOTE: CAST-IN-PLACE CONCRETE INCLUDED IN PRICE BID FOR OTHER ITEMS.



**ELEVATION RETAINING WALL NO. A-3211**  
SCALE: 1"=10'-0"



**ELEVATION RETAINING WALL NO. A-3212**  
SCALE: 1"=10'-0"



**SECTION 'A-A'**  
SCALE: 1"=10'-0"

- NOTES:**
1. ALL PANELS ARE TYPE "A" UNLESS OTHERWISE NOTED.
  2. ALL STATIONS ARE GIVEN ALONG RAMP 10
  3. FOR PANEL DETAILS, SEE SHEET NO. 3 AND NO. 4
  4. FOR ELEVATION OF R.E. WALL A-3212, SEE SHEET NO. 2
  5. FOR DETAIL "A" SEE SHEET NO. 2
  6. NUMBER OF REINF. STRIPS EQUAL TO NUMBER OF TIE STRIPS PER PANEL, SEE PANEL SCHEDULE.
  7. DASH LINES ON PANEL SURFACE INDICATE NUMBER OF REINF. STRIPS PER PANEL.

WALL SURFACE AREA: 3,292.2 SQ. FT.  
CAST-IN-PLACE COPING: 400 SQ. FT.

TYPE THICKNESS	PANEL SCHEDULE										
	LO. TIE STRIPS	A	B	C	D	SP1	SP2	SP3	SP4	SP5	SP6
7 1/2"	2	-	-	21	36	1	-	-	-	-	-
	3	-	-	17	-	-	-	-	-	-	-
	4	47	18	-	-	-	1	1	2	1	-
	5	9	18	-	-	-	-	-	-	-	-
	G	-	-	-	-	-	-	-	-	-	2

REINFORCING STRIPS	
TYPE	LENGTH
40x5mm.	222
60x5mm.	372

Note: This drawing is not to scale. Follow dimensions.

THIS DRAWING IS FURNISHED EXCLUSIVELY FOR THE USE OF THE MISSOURI HIGHWAY AND TRANSPORTATION COMMISSION AND IS NOT TO BE REPRODUCED OR TRANSMITTED IN ANY FORM OR BY ANY MEANS, ELECTRONIC OR MECHANICAL, INCLUDING PHOTOCOPYING, RECORDING, OR BY ANY INFORMATION STORAGE AND RETRIEVAL SYSTEM, WITHOUT THE WRITTEN PERMISSION OF THE COMMISSION. ANY VIOLATION OF THIS NOTICE IS SUBJECT TO PROSECUTION.

**RETAINING WALLS ADJACENT TO RAMP 10 & 12**  
**STATE ROAD INTERCHANGE: U-725 AND AIRPORT ROAD**  
**IN BERKELEY**  
**PROJECT NO. I-170-5(15B)**  
**JOB NO. 6-U-725-21**  
**ST. LOUIS**

**STA. 7+67.35 A-3211**  
**STA. 0+64.53 A-3212**  
**RTE. I-70**  
**COUNTY**  
**DATE February 1, 1979**

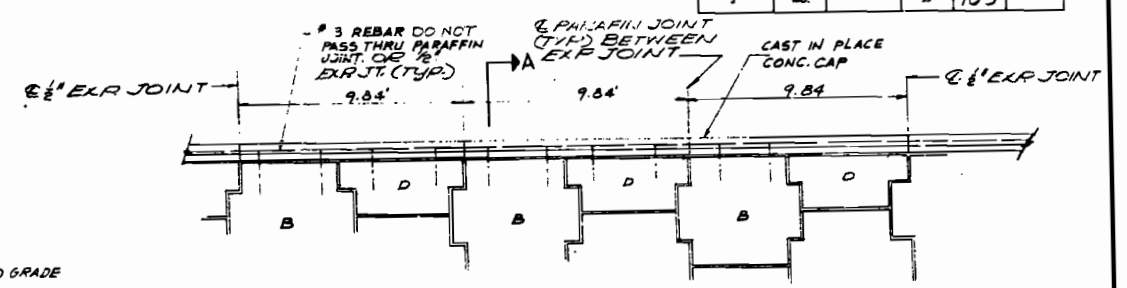
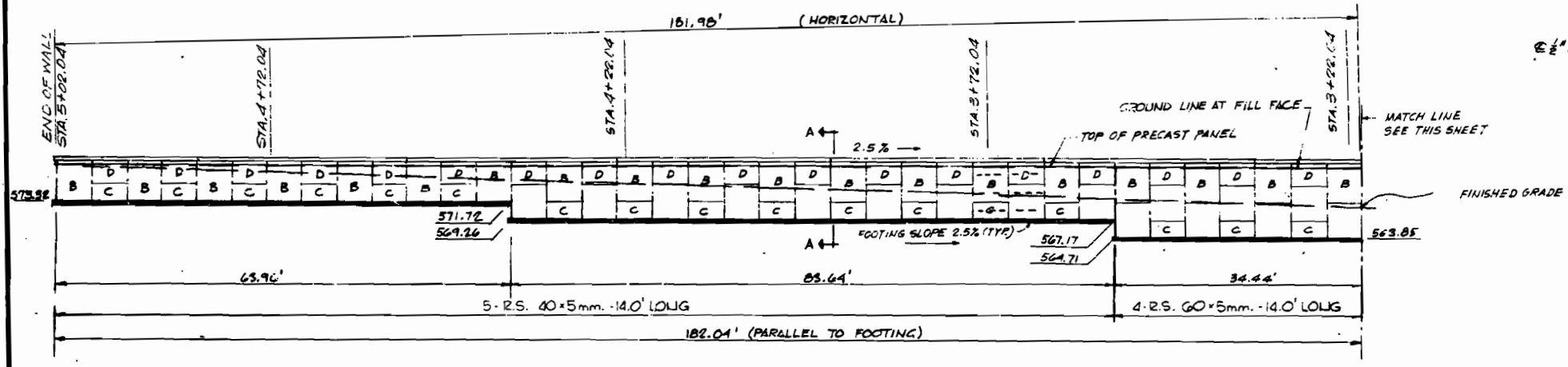
STD.
STD.60900
A-3211
A-3212

215

DESIGNED MAY 1977  
 DETAILED MAY 1977  
 CHECKED MAY 1977

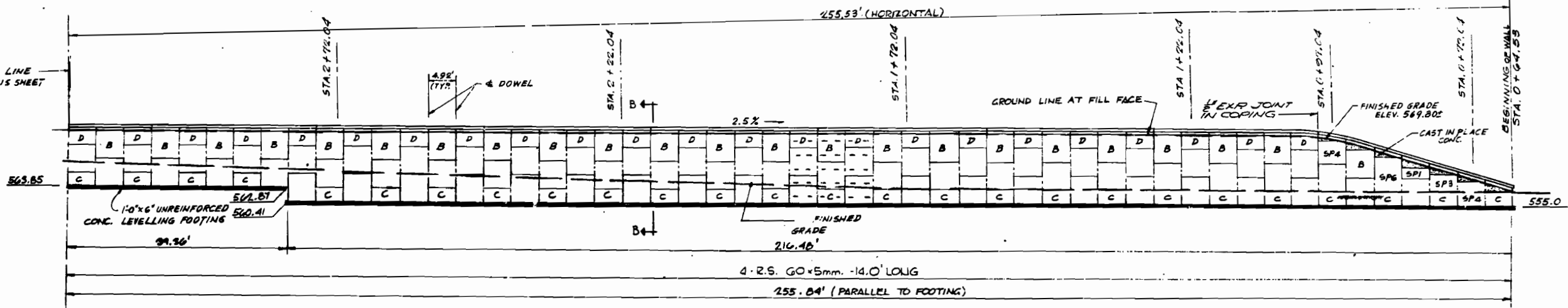
Sheet No. 1A of 4

FED. ROAD DIST. NO.	STATE	FED. AID PROJ. NO.	FISCAL YEAR	SHEET NO.	TOTAL SHEETS
5	MO.		19	103	



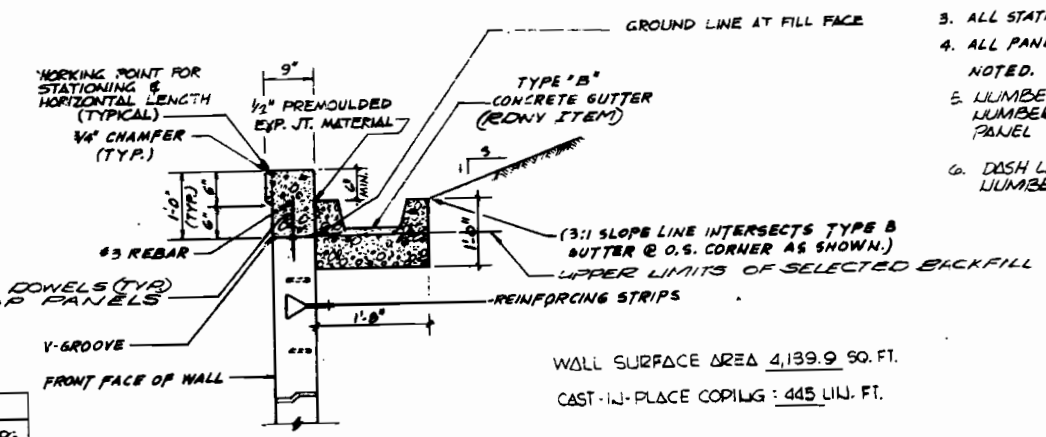
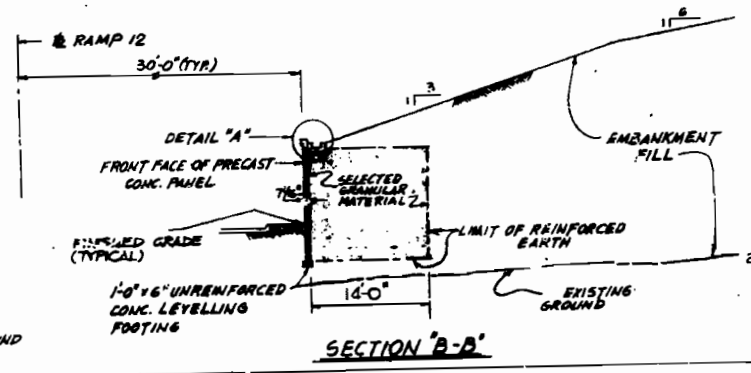
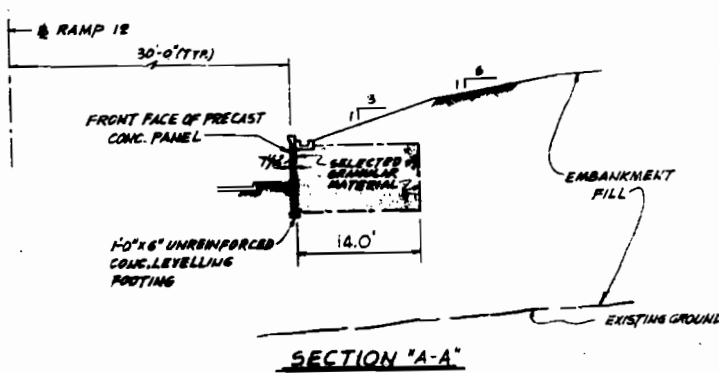
**PARTIAL R.E. WALL ELEVATION**  
 SCALE: 1/4" = 1'-0"

NOTE: 1/2" EXP. JOINT IN COPING ALIGNS WITH PANEL JOINTS @ 6' PANEL INCREMENTS FOR 1/2" PREFORMED EXP. JOINT MATERIAL SEE STD. SPECIFICATIONS 1007.2.4.



**ELEVATION RETAINING WALL A3212**  
 SCALE: 1" = 10'-0"

- NOTES:**
- FOR LOCATION OF R.E. WALL A-3211, SEE SHEET NO. 1.
  - FOR PANEL DETAILS SEE SHEET NO. 3 AND NO. 4
  - ALL STATIONS ARE GIVEN ALONG @ RAMP 12
  - ALL PANELS ARE TYPE "A" UNLESS OTHERWISE NOTED.
  - NUMBER OF REINFORCING STRIPS EQUAL TO NUMBER OF TIE STRIPS PER PANEL, SEE PANEL SCHEDULE (THIS SHEET).
  - DASH LINES ON THE SURFACE OF PANELS INDICATE NUMBER OF REINF. STRIPS PER PANEL.



WALL SURFACE AREA 4,139.9 SQ. FT.  
 CAST-IN-PLACE COPING : 445 LIN. FT.

TYPE	LENGTH	14.0' LOUG
40x5mm.		192
60x5mm.		534

THICKNESS	TYPE	NO. TIE STRIPS	A	B	C	D	SP1	SP2	SP3	SP4	SP5	SP6
7 1/2"	2	-	-	29	41	1	-	-	-	-	-	-
	3	-	-	14	-	-	-	-	-	-	-	-
	4	74	27	-	-	-	-	1	2	-	-	-
	5	9	15	-	-	-	-	-	-	-	-	-
	6	-	-	-	-	-	-	-	-	-	-	1

Note: This drawing is not to scale. Follow dimensions.

THIS DRAWING IS FURNISHED EXCLUSIVELY FOR THE USE OF ARCHER ENGINEERING, INC. IN CONNECTION WITH THIS PROJECT. THE REINFORCED EARTH COMPANY IS EXCLUSIVE LICENSEE IN THE U.S. FOR REINFORCED EARTH CO.® AND UNDER U.S. PAT. RIGHTS ISSUED TO ARCHER ENGINEERING, INC.

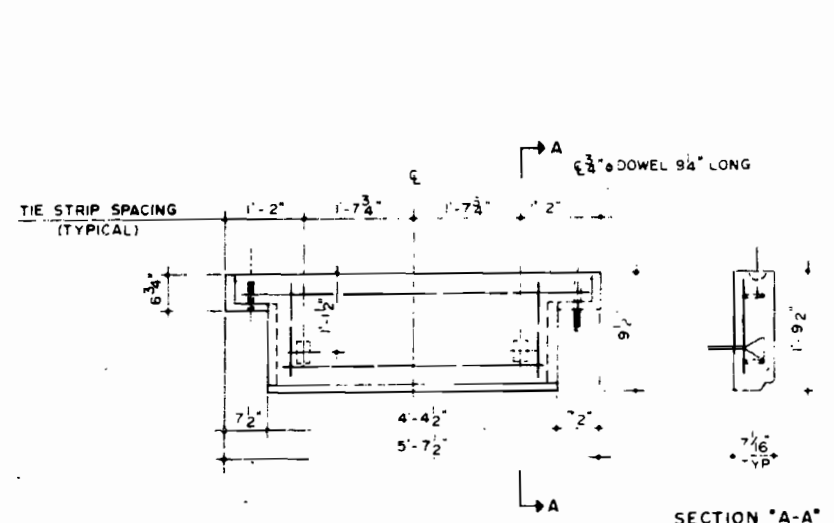
ST. LOUIS COUNTY  
 A-3211  
 A-3212

DETAILED MAY 1977  
 CHECKED MAY 1977

Sheet No. 2A of 4

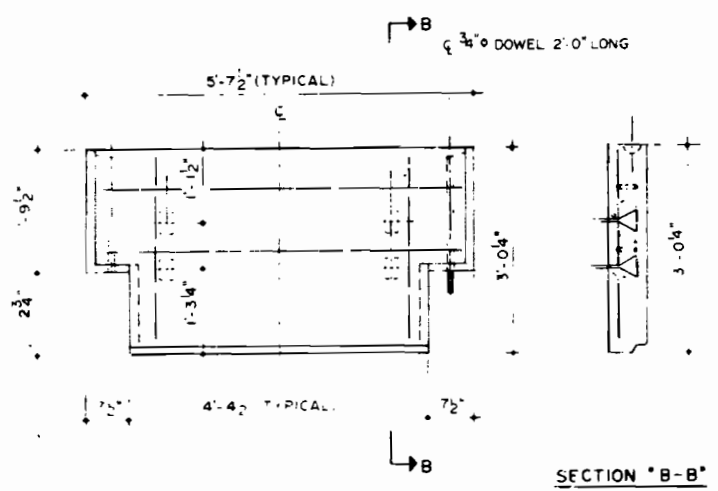
216





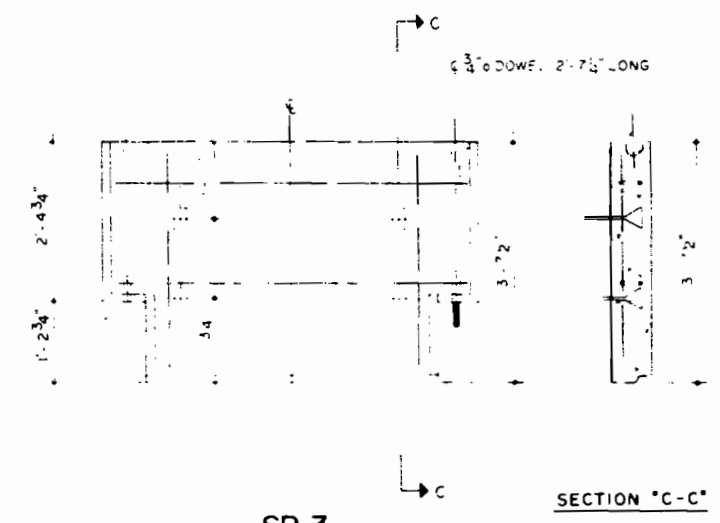
SP1

SECTION "A-A"



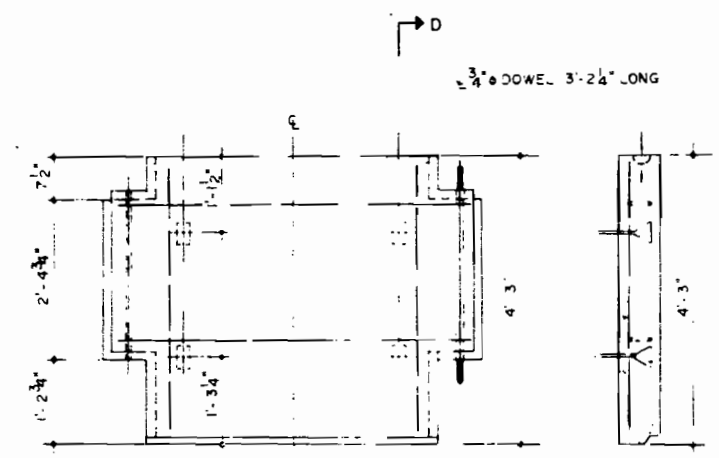
SP2

SECTION "B-B"



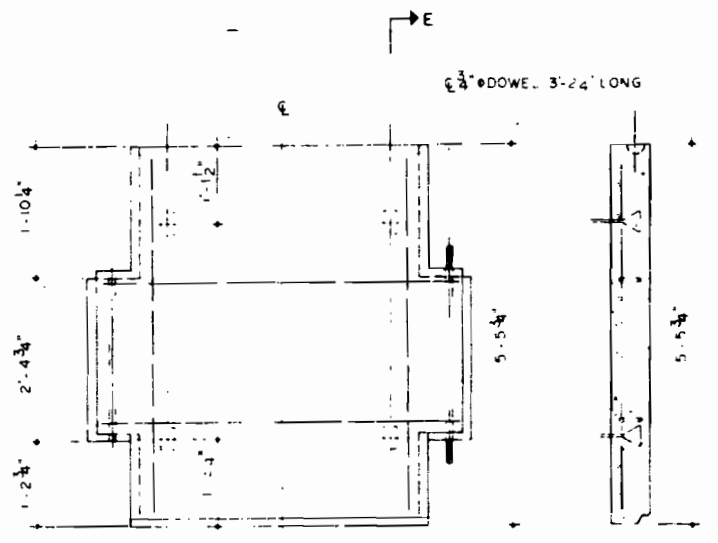
SP3

SECTION "C-C"



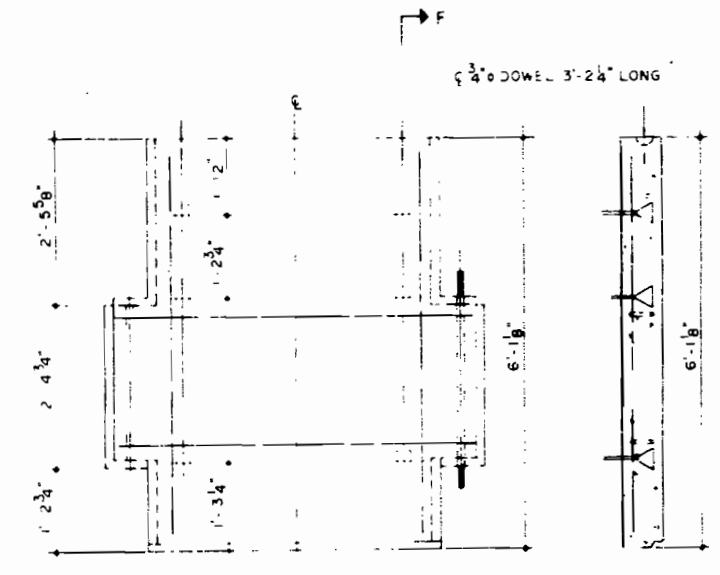
SP4

SECTION "D-D"



SP5

SECTION "E-E"



SP6

SECTION "F-F"

NOTE  
FOR DETAILS NOT SHOWN SEE DWG. 30F1

PANEL SURFACE AREA	
TYPE	SQ. FT.
SP1	14.9
SP2	17.9
SP4	20.9
SP5	27.0
SP6	30.0

SPECIAL PANEL DETAILS

Note: This drawing is not to scale. Follow dimensions.

THIS DRAWING IS FURNISHED EXCLUSIVELY FOR THE USE OF THE RESPONDING PARTY AND IS NOT TO BE REPRODUCED OR TRANSMITTED IN ANY FORM OR BY ANY MEANS, ELECTRONIC OR MECHANICAL, INCLUDING PHOTOCOPYING, RECORDING, OR BY ANY INFORMATION STORAGE AND RETRIEVAL SYSTEM, WITHOUT THE WRITTEN PERMISSION OF THE ENGINEER OR ARCHITECT. THE ENGINEER OR ARCHITECT ASSUMES NO LIABILITY FOR ANY ERRORS OR OMISSIONS IN THIS DRAWING OR FOR ANY DAMAGE TO PERSONS OR PROPERTY CAUSED BY THE USE OF THIS DRAWING OR FOR ANY INFORMATION CONTAINED THEREIN.

ST LOUIS COUNTY

A-3211  
A-3212

Sheet No. 4A of 4

DETAILED May 1977  
CHECKED May 1977

C10

U.I.P. & REHABILITATE EXISTING (393'-4 1/4") MECHANICALLY STABILIZED EARTH (MSE) RETAINING WALL SYSTEM

SEC/SUR 3 TWP 46N RGE 6E



THIS SHEET HAS BEEN SIGNED, SEALED, AND DATED ELECTRONICALLY

DATE PREPARED 6/6/2023

ROUTE I-170 STATE MO

DISTRICT BR SHEET NO. 1

COUNTY ST. LOUIS

J6M0288

CONTRACT ID.

PROJECT NO.

BRIDGE NO. A32111

DESCRIPTION

DATE

MISSOURI HIGHWAYS AND TRANSPORTATION COMMISSION

105 WEST CAPITAL

JEFFERSON CITY, MO 65102

1-888-ASK-MODOT (1-888-275-6636)

MoDOT

EDSI

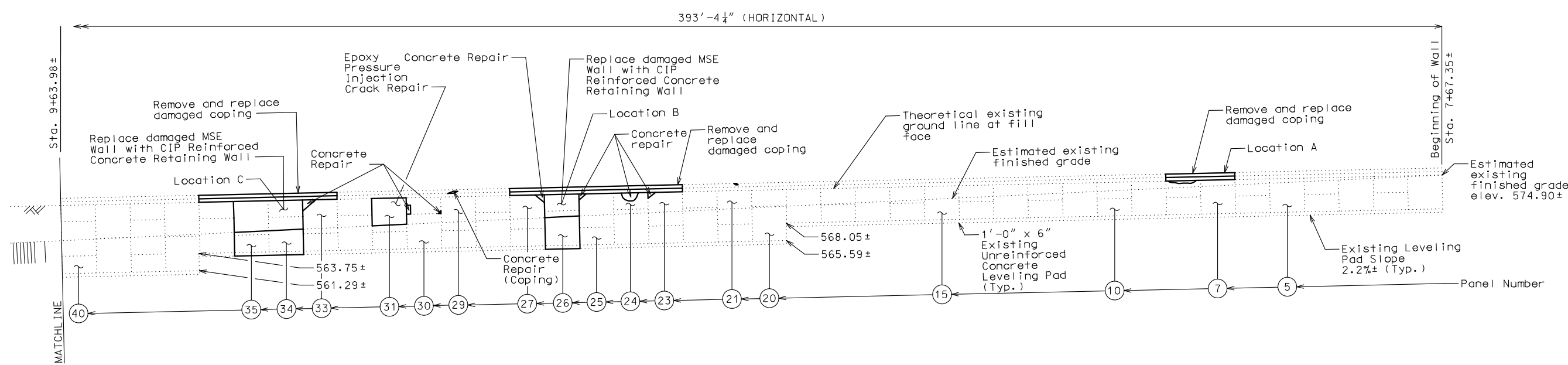
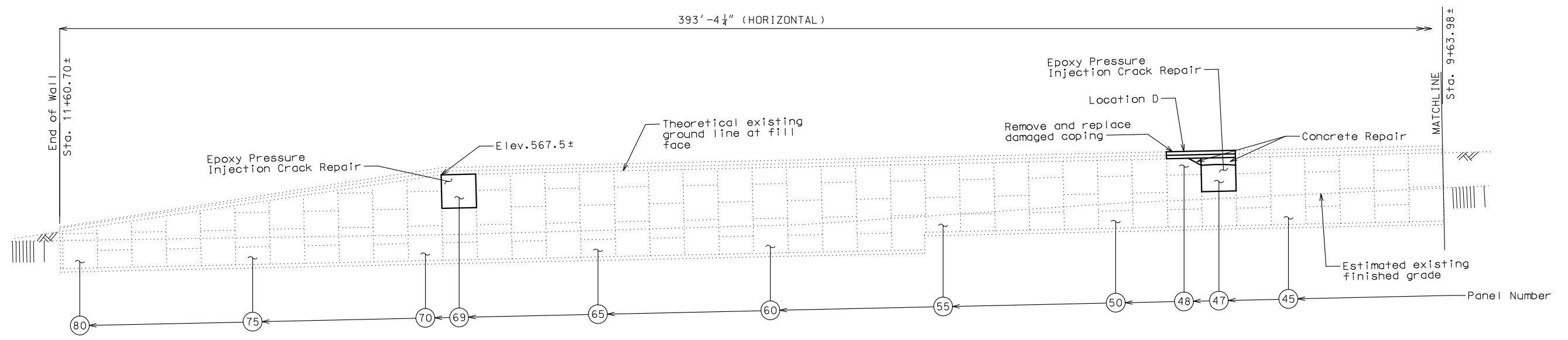
ENGINEERING DESIGN SOURCE, INC.

1644 SWINGLEY RIDGE RD., SUITE 300

CHESTERFIELD, MO 63017

MISSOURI STATE ENGINEERING COMPANY

CERTIFICATE OF AUTHORITY # 00323



ELEVATION RETAINING WALL NO. A32111  
STA. 7+67.35± to 11+60.70±

Notes:

For Boring Locations and Boring Logs, see Sheet Nos. 9 thru 11.

Outline of existing work is indicated by light dashed lines. Heavy lines indicate new work.

For General Notes, Location Sketch and Estimated Quantities, See Sheet No. 2.

All longitudinal dimensions are horizontal unless noted otherwise.

See Roadway Sheet No. 5 for Plan view.

**REPAIRS TO RETAINING WALL: ALONG WESTSIDE OF RAMP 10**

ROUTE I-170 FROM AIRPORT RD. TO RTE. I-270 ABOUT 0.1 MILES NORTH OF AIRPORT RD. BEG. STA. 7+67.35

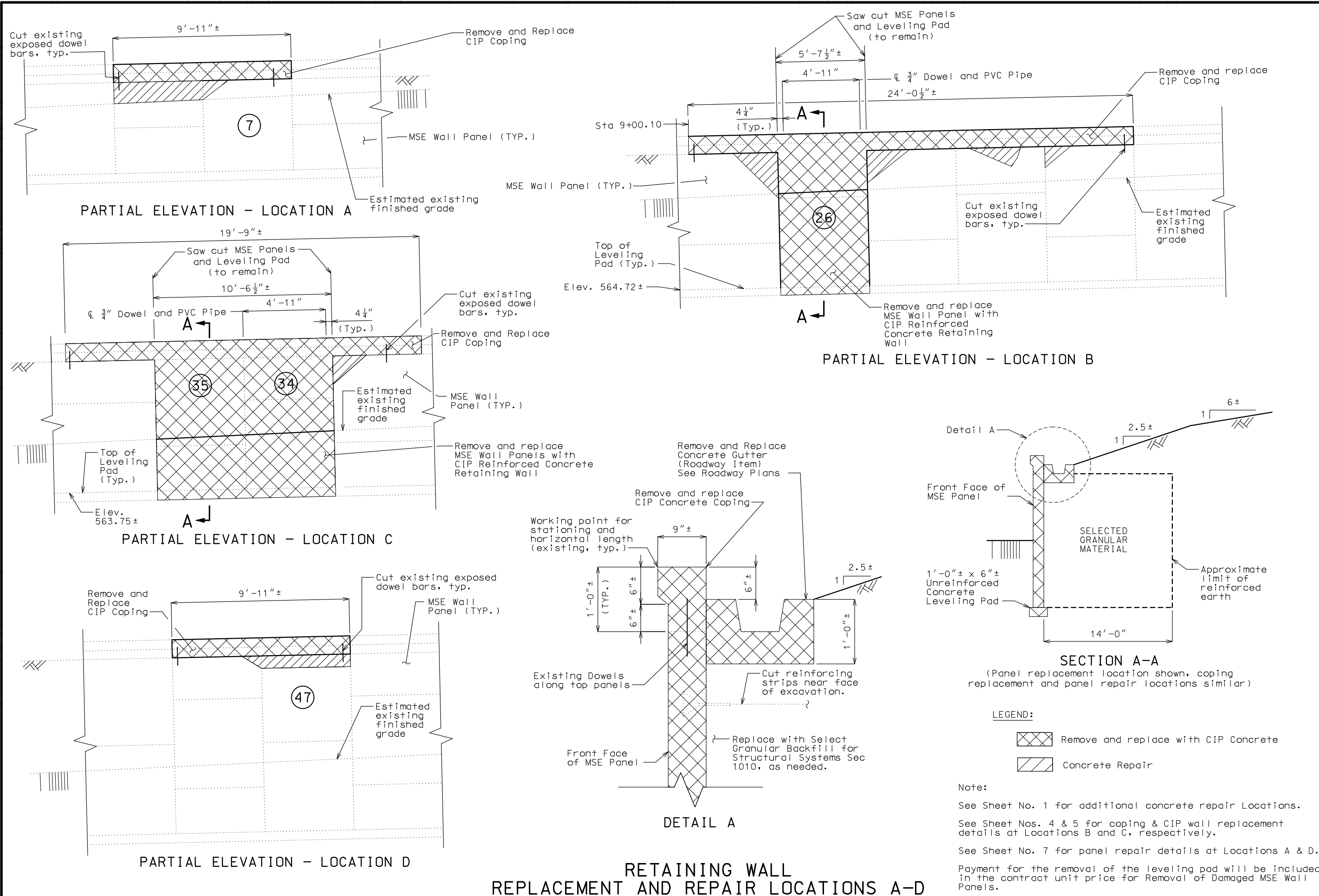
GENERAL ELEVATION

Detailed FEB. 2023  
Checked FEB. 2023

Note: This drawing is not to scale. Follow dimensions.

Sheet No. 1 of 11








**RETAINING WALL  
REPLACEMENT AND REPAIR LOCATIONS A-D**

Note: This drawing is not to scale. Follow dimensions. Sheet No. 3 of 11

Detailed FEB. 2023  
Checked FEB. 2023

 THIS SHEET HAS BEEN SIGNED, SEALED, AND DATED ELECTRONICALLY. DATE PREPARED: 6/6/2023	
ROUTE I-170	STATE MO
DISTRICT BR	SHEET NO. 3
COUNTY ST. LOUIS	
JOB NO. J6M0288	
CONTRACT ID.	
PROJECT NO.	
BRIDGE NO. A32111	
DESCRIPTION	
DATE	
MISSOURI HIGHWAYS AND TRANSPORTATION COMMISSION	 105 WEST CAPITAL JEFFERSON CITY, MO 65102 1-888-ASK-MODOT (1-888-275-6636)
EDSI	 ENGINEERING DESIGN SOURCE, INC. 1641 SWINGLEY RIDGE RD., SUITE 300 CHESTERFIELD, MO 63017 MISSOURI STATE ENGINEERING COMPANY CERTIFICATE OF AUTHORITY # 001521











DISCLAIMER  
BORINGS AND GEOTECHNICAL REPORT WERE  
COMPLETED BY SCI ENGINEERING, INC.  
(SCI) AND PROVIDED TO EDSI BY SCI



THIS SHEET HAS BEEN  
SIGNED, SEALED, AND DATED  
ELECTRONICALLY

SEE DISCLAIMER

DATE PREPARED

6/6/2023

ROUTE STATE

I-170 MO

DISTRICT SHEET NO.

BR 9

COUNTY

ST. LOUIS

JOB NO.

J6M0288

CONTRACT ID.

PROJECT NO.

BRIDGE NO.

A32111

DESCRIPTION

DATE

MISSOURI HIGHWAYS AND TRANSPORTATION  
COMMISSION

105 WEST CAPITOL  
JEFFERSON CITY, MO 65102  
1-888-ASK-MODOT (1-888-275-6636)

MoDOT

EDSI

ENGINEERING DESIGN SOURCE, INC.

1644 SWINGLEY RIDGE RD., SUITE 300  
CHESTERFIELD, MO 63017  
6600 STATE ENGINEERING COMPANY  
MISSOURI STATE ENGINEERING COMPANY  
CERTIFICATE OF AUTHORITY # 001523

DocuSign Envelope ID: 4E6B24E6-D1A4-4A04-A125-8593B3E1683B



SCI ENGINEERING, INC.

130 Point West Boulevard

St. Charles, Missouri 63301

636-949-8200

www.sciengineering.com

**BORING LOG LEGEND AND NOMENCLATURE**

**Depth** is in feet below ground surface. **Elevation** is in feet mean sea level, site datum, or as otherwise noted.

**Sample Type**

- SS** Split-spoon sample, disturbed, obtained by driving a 2-inch-O.D. split-spoon sampler (ASTM D 1586).
- NX** Diamond core bit, nominal 2-inch-diameter rock sample (ASTM D 2113).
- ST** Thin-walled (Shelby) tube sample, relatively undisturbed, obtained by pushing a 3-inch-diameter, tube (ASTM D 1587).
- CS** Continuous sample tube system, relatively undisturbed, obtained by split-barrel sampler in conjunction with auger advancement.
- SV** Shear vane, field test to determine strength of cohesive soil by pushing or driving a 2-inch-diameter vane, and then shearing by torquing soil in existing and remolded states (ASTM D 2573).
- BS** Bag sample, disturbed, obtained from cuttings.

**Recovery** is expressed as a ratio of the length recovered to the total length pushed, driven, cored.

**Blows** Numbers indicate blows per 6 inches of split-spoon sampler penetration when driven with a 140-pound hammer falling freely 30 inches. The number of total blows obtained for the second and third 6-inch increments is the N value (Standard Penetration Test or SPT) in blows per foot (ASTM D 1586). Practical refusal is considered to be 50 or more blows without achieving 6 inches of penetration, and is expressed as a ratio of 50 to actual penetration, e.g., 50/2 (50 blows for 2 inches).

For analysis, the N value is used when obtained by a cathead and rope system. When obtained by an automatic hammer, the N value may be increased by a factor of 1.3.

**Vane Shear Strength** is expressed as the peak strength (existing state) / the residual strength (remolded state).

**Description** indicates soil constituents and other classification characteristics (ASTM D 2488) and the Unified Soil Classification (ASTM D 2487). Secondary soil constituents (expressed as a percentage) are described as follows:

Trace	<5
Few	5-15
With	>15-30

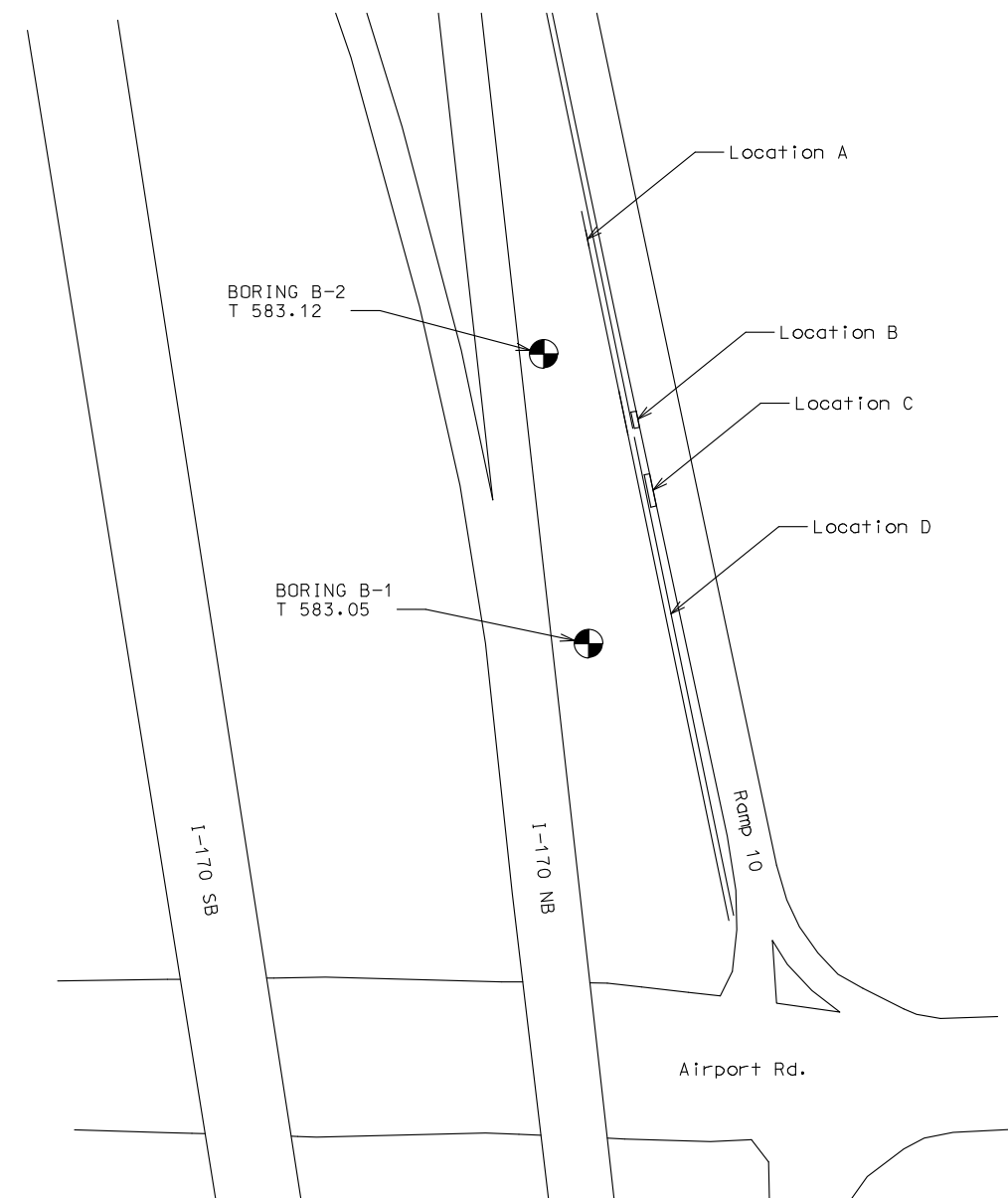
**Stratigraphic Breaks** may be observed or interpreted, and are indicated by a dashed line. Transition between described materials may be gradual.

**Laboratory Test Results**

- Natural moisture content (ASTM D 2216) in percent.
- Dry density in pounds per cubic foot (pcf).
- Hand penetrometer value of apparently intact cohesive sample in kips per square foot (ksf).
- Unconfined compressive strength (ASTM D 2166) in kips per square foot (ksf).
- Liquid and Plastic Limits (ASTM D 4318) in percent.

**RQD (Rock Quality Designation)** is the ratio between the total length of core segments 4 inches or more in length and the total length of core drilled. RQD (expressed as a percentage) indicates insitu rock quality as follows:

Excellent	90 to 100
Good	75 to 90
Fair	50 to 75
Poor	25 to 50
Very Poor	0 to 25



**Boring Location**

⊗ Indicates location of borings.

**Notice and Disclaimer Regarding Boring Log Data**

The locations of all subsurface borings for this structure are shown on the Boring Location plan for this structure. The boring data for all locations indicated, as well as any other boring logs or other factual records of subsurface data and investigations performed by the department for the design of the project, are shown on Sheets No. 9-11 or will be available from the Project Contact upon written request. No greater significance or weight should be given to the boring data depicted on the plan sheets than is given to the subsurface data available from the district or elsewhere.

The Commission does not represent or warrant that any such boring data accurately depicts the conditions to be encountered in constructing this project. A contractor assumes all risks it may encounter in basing its bid prices, time or schedule of performance on the boring data depicted here or those available from the district, or on any other documentation not expressly warranted, which the contractor may obtain from the Commission.

Detailed FEB. 2023  
Checked FEB. 2023

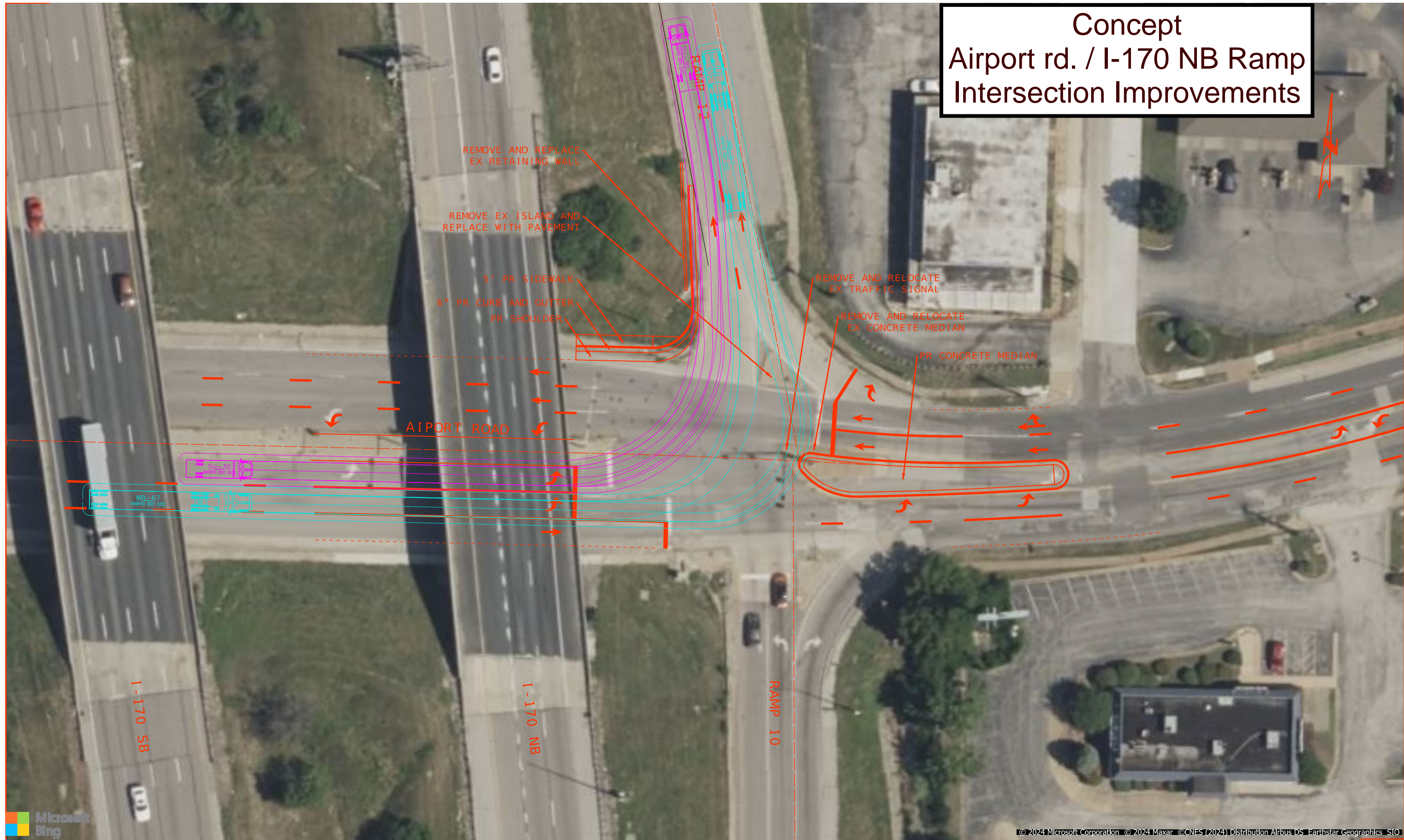
Note: This drawing is not to scale. Follow dimensions.

Sheet No. 9 of 11





# Concept Airport rd. / I-170 NB Ramp Intersection Improvements



**EXHIBIT IB:  
SB I-170 RAMP**



*Airport Road*

*James S.  
McDonnell Blvd*

**Widening of the  
SB Ramp**

*N Hanley Road*

*Boeing STLX -  
Brownleigh Site*





AIRPORT ROAD

20

C/L AIRPORT ROAD

11352038  
ASSTD. JAMES MCCORMICK, CIVIL  
ENGR. 0242  
MCCORMICK CONSULTANTS

PR R.O.W.  
PR PERM EASE  
EX R.O.W.

STL COUNTY  
JURISDICTION  
MUNICIPAL  
JURISDICTION

5' PR SIDEWALK  
4.5' PR PARKWAY

11352038  
ASSTD. JAMES MCCORMICK, CIVIL  
ENGR. 0242  
MCCORMICK CONSULTANTS

EX R.O.W.

PR CURB AND GUTTER

START STA 0+00.00

END STA 23+48.95

I-170 RAMP 13

8' PR ASPHALT SHOULDER  
500' LENGTH OF WIDENING

B/L RAMP 13

PR R.O.W.

EX R.O.W.

ROW Dedication  
Approx. 0.1 Ac

50:1 TAPER (400')

3-1/2' (E-615)

EX R.O.W.

START STA 10+82.20

10

SB I-170

NB I-170



SCALE



**AIRPORT ROAD  
DESIGN DESIGNATION**

A.A.D.T. - 2026 = 6385  
 A.A.D.T. - 2046 = 6712  
 D.H.V. = 10%  
 T = 12.4%  
 V = 30 M.P.H.  
 D = 50%

FUNCTIONAL CLASSIFICATION- MAJOR COLLECTOR

**RAMP 13/I-170  
DESIGN DESIGNATION**

A.A.D.T. - 2026 = 9817  
 A.A.D.T. - 2046 = 10320  
 D.H.V. = 10%  
 T = 36.3%  
 V = 50 M.P.H.  
 D = 100%

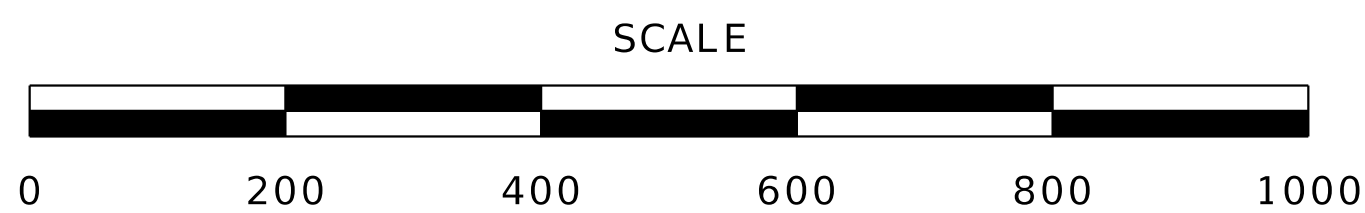
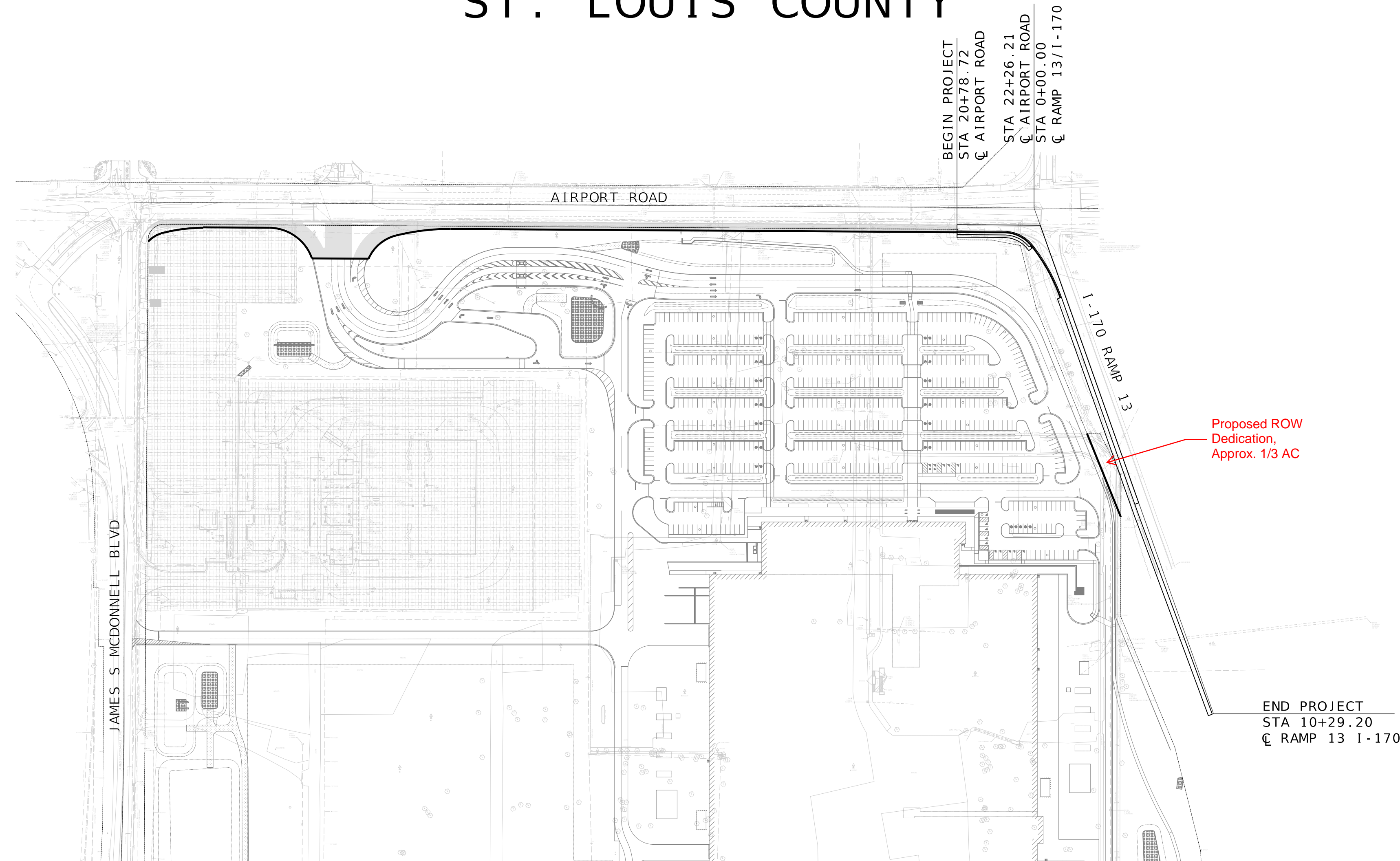
FUNCTIONAL CLASSIFICATION- INTERSTATE

**CONVENTIONAL SYMBOLS  
(USED IN PLANS)**

	EXISTING	NEW
BUILDINGS AND STRUCTURES		
GUARD RAIL		
GUARD CABLE		
CONCRETE RIGHT-OF-WAY MARKER		
STEEL RIGHT-OF-WAY MARKER		
LOCATION SURVEY MARKER		
UTILITIES		
FIBER OPTICS	-FO-	-FO-
OVERHEAD CABLE TV	-OTV-	-OTV-
UNDERGROUND CABLE TV	-UTV-	-UTV-
OVERHEAD TELEPHONE	-OT-	-OT-
UNDERGROUND TELEPHONE	-UT-	-UT-
OVERHEAD POWER	-OE-	-OE-
UNDERGROUND POWER	-UE-	-UE-
SANITARY SEWER	-S-	-S-
STORM SEWER	-SS-	-SS-
GAS	-G-	-G-
WATER	-W-	-W-
MANHOLE		
FIRE HYDRANT		
WATER VALVE		
WATER METER		
DROP INLET		
DITCH BLOCK		
GROUND MOUNTED SIGN		
LIGHT POLE		
H-FRAME POWER POLE		
TELEPHONE PEDESTAL		
FENCE		
CHAIN LINK	-V-	-V-
WOVEN WIRE	-X-	-X-
GATE POST		
BENCHMARK		

NOTE: DASHED OR OPEN SYMBOLS INDICATE EXISTING FEATURES

**MISSOURI HIGHWAYS AND TRANSPORTATION COMMISSION  
PLANS FOR PROPOSED  
STATE HIGHWAY  
ST. LOUIS COUNTY**



THE EXISTENCE AND APPROXIMATE LOCATION OF UTILITY FACILITIES KNOWN TO EXIST, AS SHOWN ON THE PLANS, ARE BASED ON THE BEST INFORMATION AVAILABLE TO THE COMMISSION AT THIS TIME. THIS INFORMATION IS PROVIDED BY THE COMMISSION "AS-IS" AND THE COMMISSION EXPRESSLY DISCLAIMS ANY REPRESENTATION OR WARRANTY AS TO THE COMPLETENESS, ACCURACY, OR SUITABILITY OF THE INFORMATION FOR ANY USE. RELIANCE UPON THIS INFORMATION IS DONE AT THE RISK AND PERIL OF THE USER, AND THE COMMISSION SHALL NOT BE LIABLE FOR ANY DAMAGES THAT MAY ARISE FROM ANY ERROR IN THE INFORMATION. IT IS, THEREFORE, THE RESPONSIBILITY OF THE CONTRACTOR TO VERIFY THE EXISTENCE, LOCATION AND STATUS OF ANY FACILITY. SUCH VERIFICATION INCLUDES DIRECT CONTACT WITH THE LISTED UTILITIES.

**INDEX OF SHEETS**

DESCRIPTION	SHEET NUMBER
TITLE SHEET -----	1
TYPICAL SECTIONS (TS) (2 SHEETS)---	2-3
PLAN SHEETS (PL) (2 SHEETS)-----	4-5
UTILITY PLANS (UT) (2 SHEETS)-----	6-7

DATE PREPARED	3/14/2025
ROUTE 1-170/RAMP 13	STATE MO
DISTRICT SL	SHEET NO. 1
COUNTY	ST. LOUIS
JOB NO.	XXXXXX
CONTRACT ID.	
PROJECT NO.	
BRIDGE NO.	

DESCRIPTION	DATE

**LENGTH OF PROJECT**

<b>RAMP 13/I-170</b>	
BEGINNING OF PROJECT	STA. 0 + 34.28
END OF PROJECT	STA. 10 + 29.20
APPARENT LENGTH	994.92 FEET
<b>AIRPORT ROAD</b>	
BEGINNING OF PROJECT	STA. 20 + 78.72
END OF PROJECT	STA. 22 + 26.21
APPARENT LENGTH	147.49 FEET

EQUATIONS AND EXCEPTIONS:

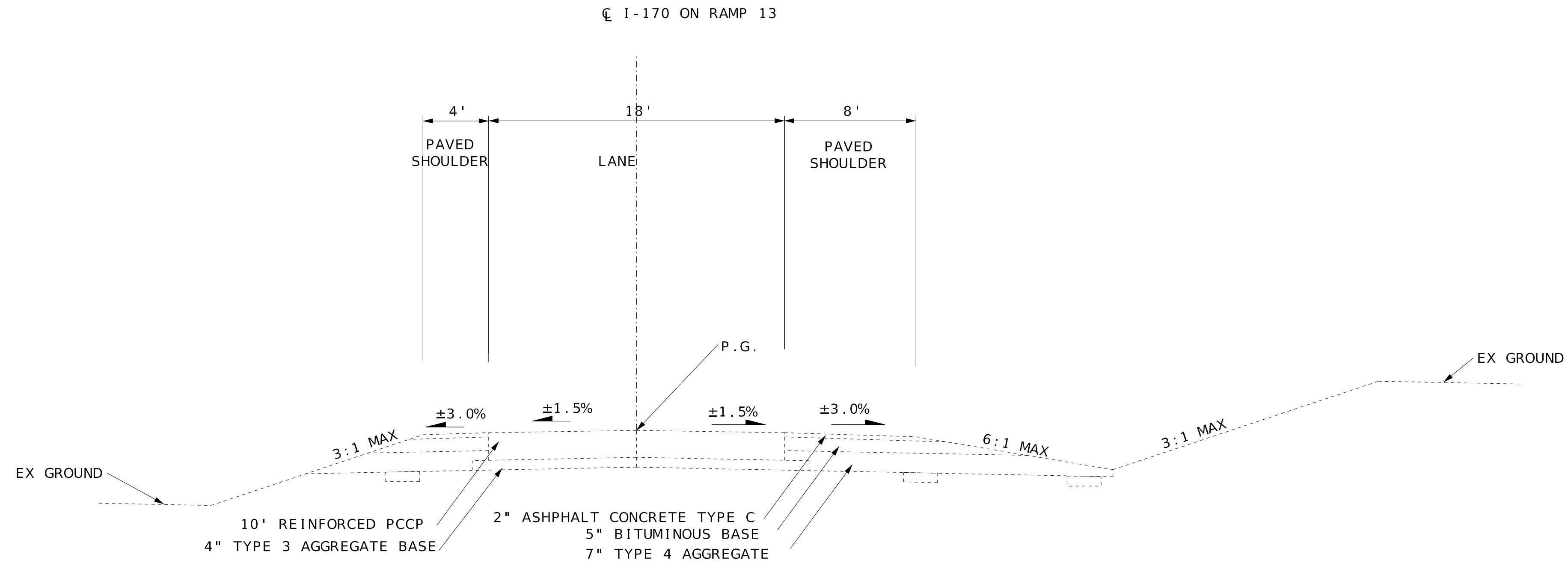
TOTAL CORRECTIONS	0.00 FEET
NET LENGTH OF PROJECT	1142.41 FEET
STATE LENGTH	994.92 FEET
FOR INFORMATION ONLY ESTIMATED DISTURBED ACRES	0.XX ACRES

MISSOURI HIGHWAYS AND TRANSPORTATION COMMISSION

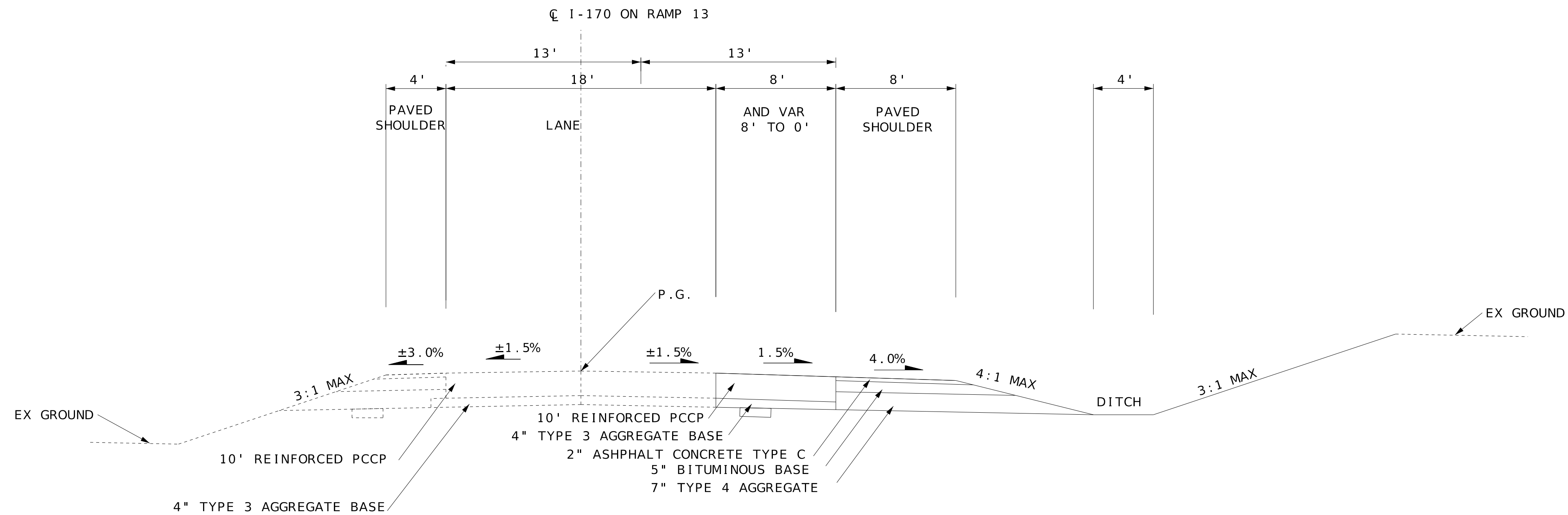
105 WEST CAPITOL  
JEFFERSON CITY, MO 65102  
1-888-ASK-MODOT (1-888-275-6636)

**Jacobs**

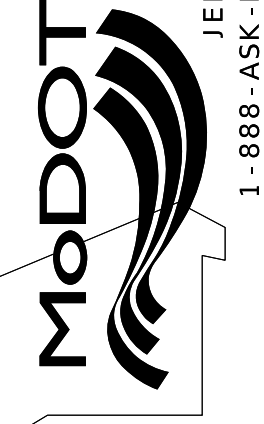
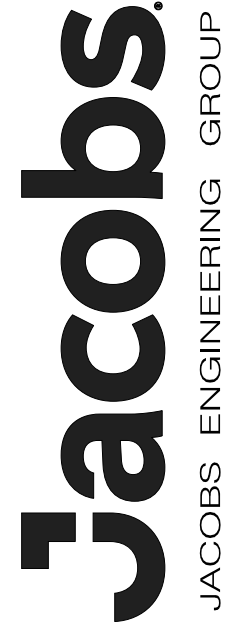
JACOBS ENGINEERING GROUP  
501 NORTH BROADWAY  
ST. LOUIS, MISSOURI 63102-2121  
PHONE: (314) 335-4000  
CERTIFICATE OF AUTHORITY #00704



EXISTING TYPICAL SECTION - I-170 ON RAMP 13  
SECTION ON TANGENT  
STA 0+34.28 TO STA 10+29.20



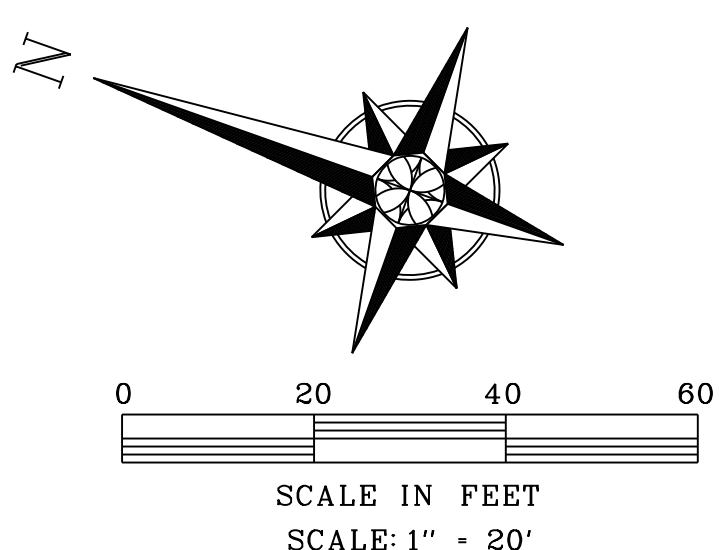
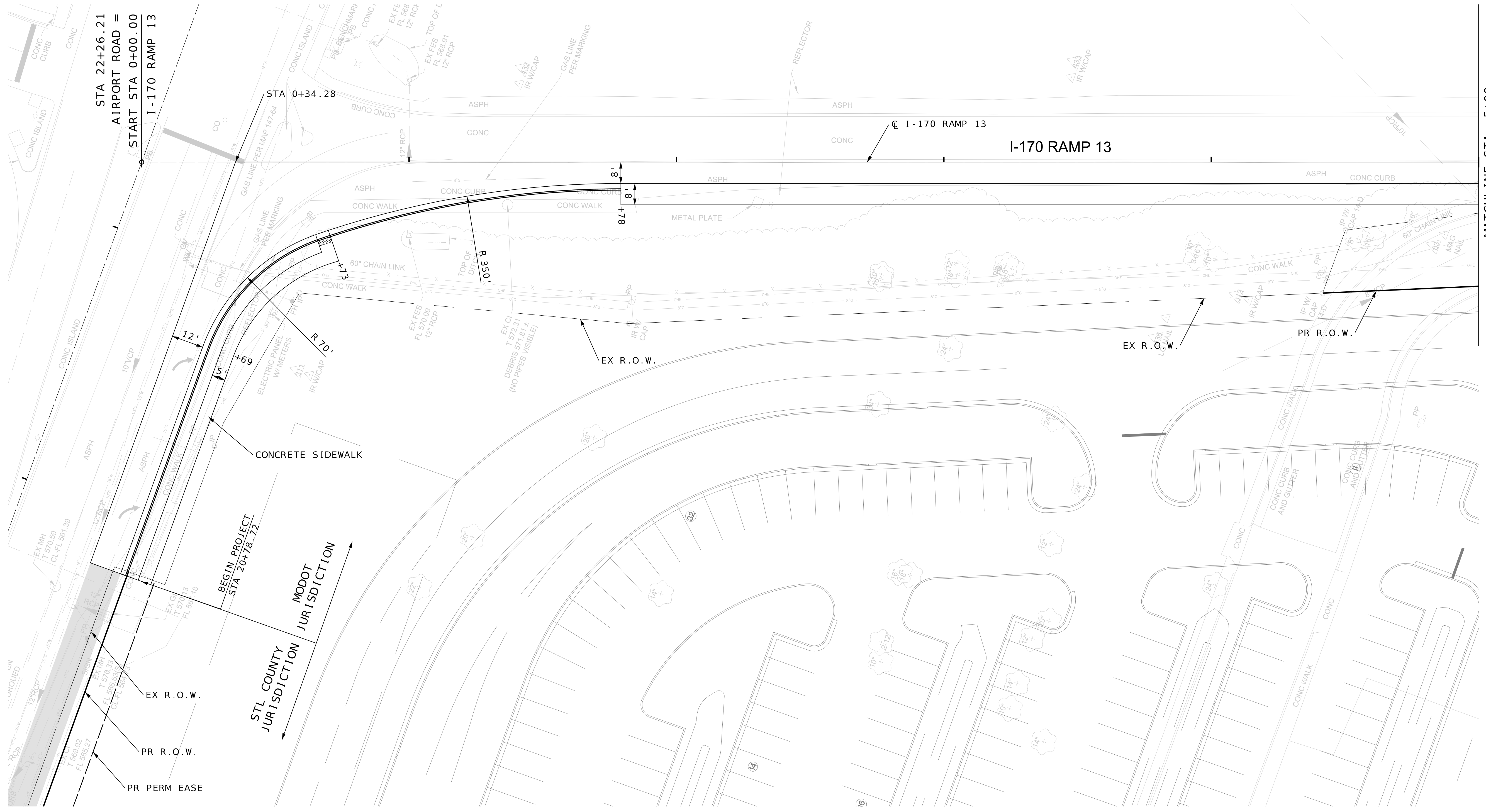
PROPOSED TYPICAL SECTION - I-170 ON RAMP 13  
SECTION ON TANGENT  
STA 0+34.28 TO STA 10+29.20

DATE		3/14/2025	
DATE PREPARED		3/14/2025	
ROUTE	STATE	MO	
1-170/ RAMP 13			
DISTRICT	SHEET NO.	2	
SL			
COUNTY			
ST. LOUIS			
JOB NO.			
XXXXXX			
CONTRACT ID.			
PROJECT NO.			
BRIDGE NO.			
DESCRIPTION			
DATE			
MISSOURI HIGHWAYS AND TRANSPORTATION COMMISSION			
		105 WEST CAPITOL JEFFERSON CITY, MO 65102 1-888-ASK-MODOT (1-888-275-6636)	
			
JACOBS ENGINEERING GROUP 501 NORTH BROADWAY ST. LOUIS, MISSOURI 63102-2121 PHONE: (314) 335-4000 CERTIFICATE OF AUTHORITY #00704			

I-170 ON-RAMP  
TYPICAL SECTION  
(SHEET 1 OF 2)

IF A SEAL IS PRESENT ON THIS SHEET IT HAS BEEN ELECTRONICALLY SEALED AND DATED.

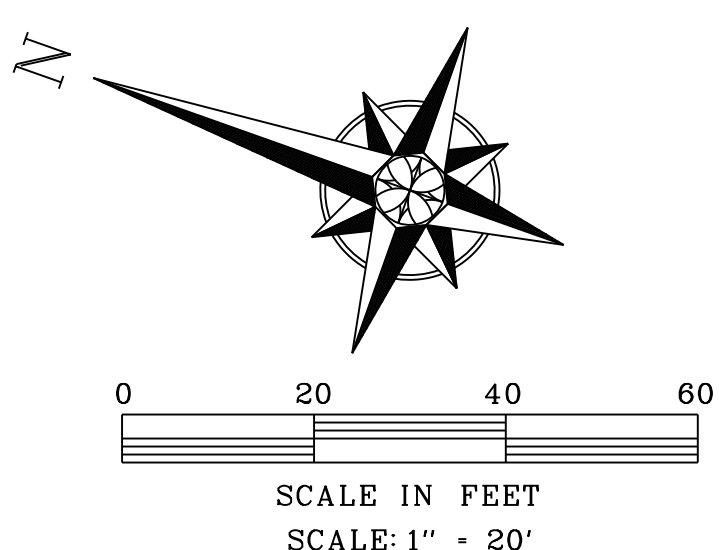
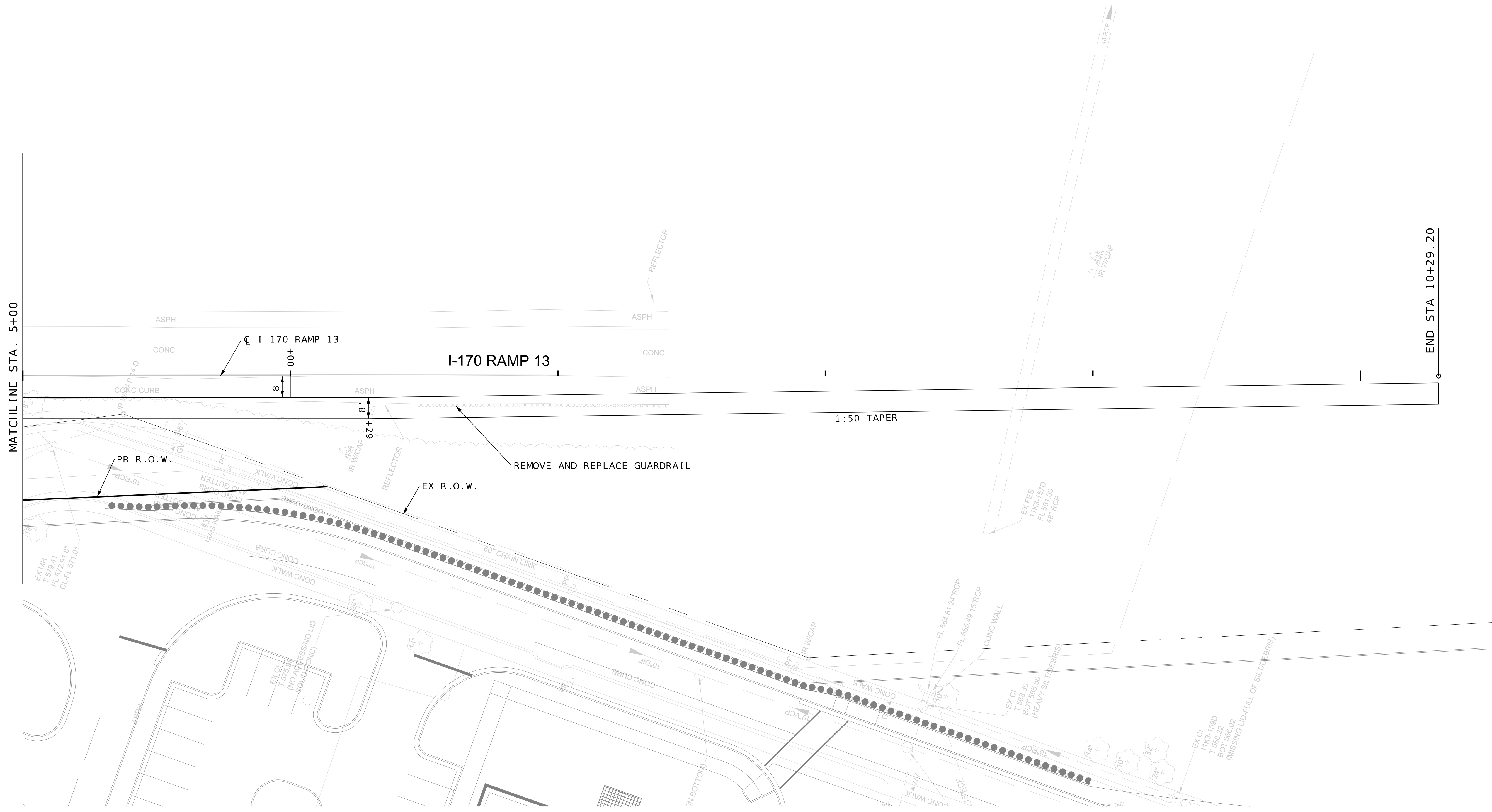




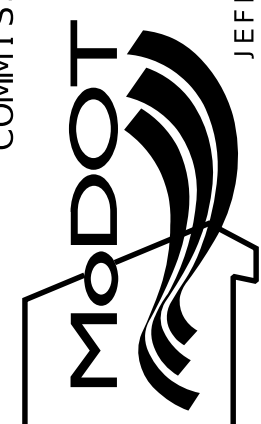
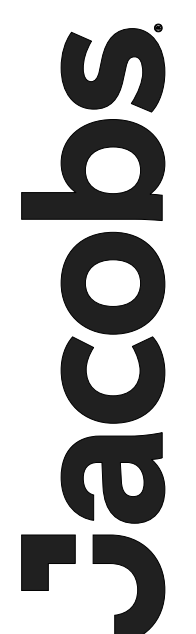
I-70 ON-RAMP  
 PLAN SHEET  
 (SHEET 1 OF 2)

DATE PREPARED 3/14/2025	
ROUTE I-170/ RAMP 13	STATE MO
DISTRICT SL	SHEET NO. 4
COUNTY ST. LOUIS	
JOB NO. XXXXXX	
CONTRACT ID.	
PROJECT NO.	
BRIDGE NO.	
DESCRIPTION	DATE
MISSOURI HIGHWAYS AND TRANSPORTATION COMMISSION	105 WEST CAPITOL JEFFERSON CITY, MO 65102 1-888-ASK-MODOT (1-888-275-6636)
JACOBS ENGINEERING GROUP 501 NORTH BROADWAY ST. LOUIS, MISSOURI 63102-2121 PHONE: (314) 335-4000 CERTIFICATE OF AUTHORITY #00704	

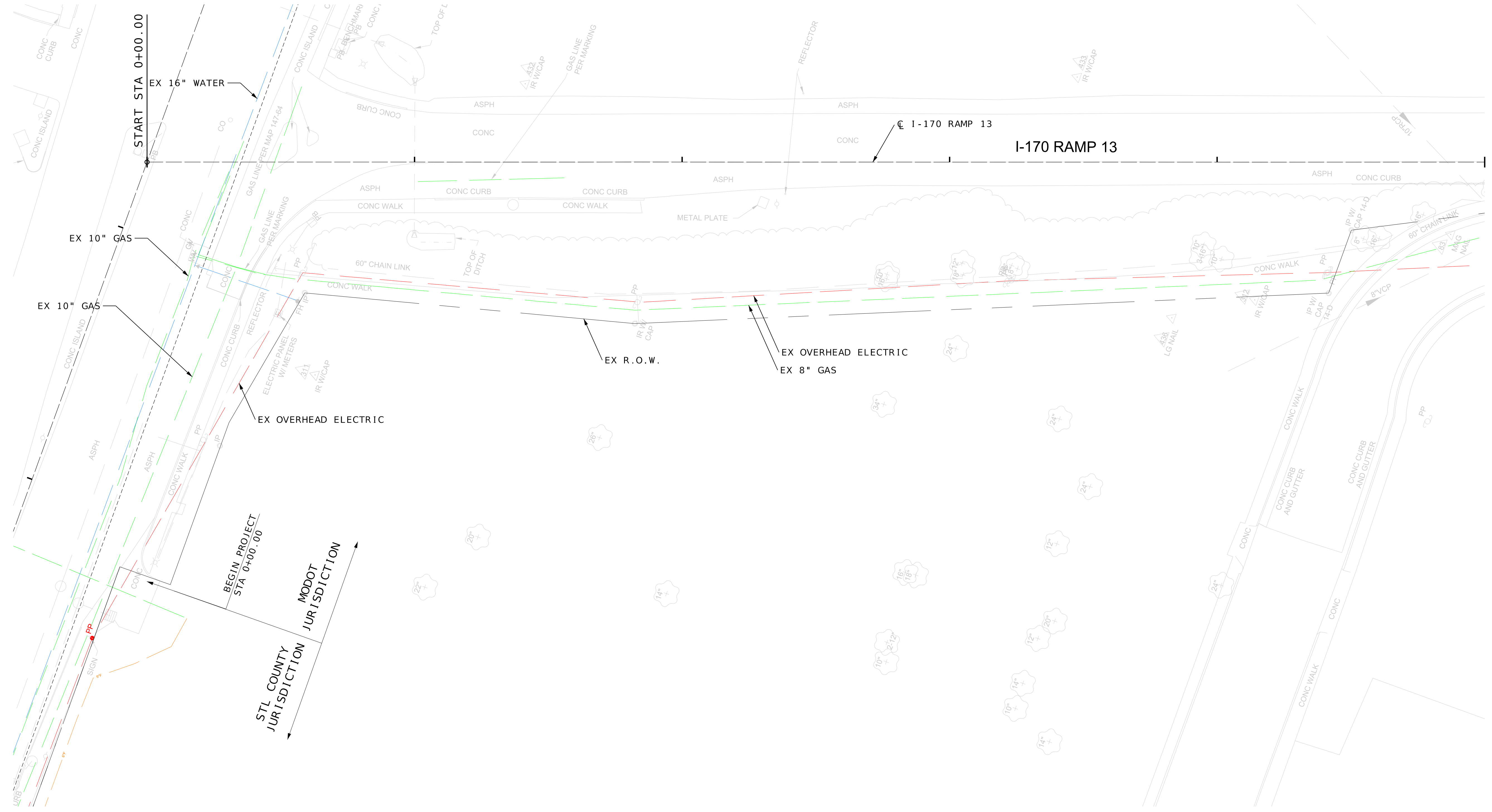
IF A SEAL IS PRESENT ON THIS SHEET IT HAS BEEN ELECTRONICALLY SEALED AND DATED.



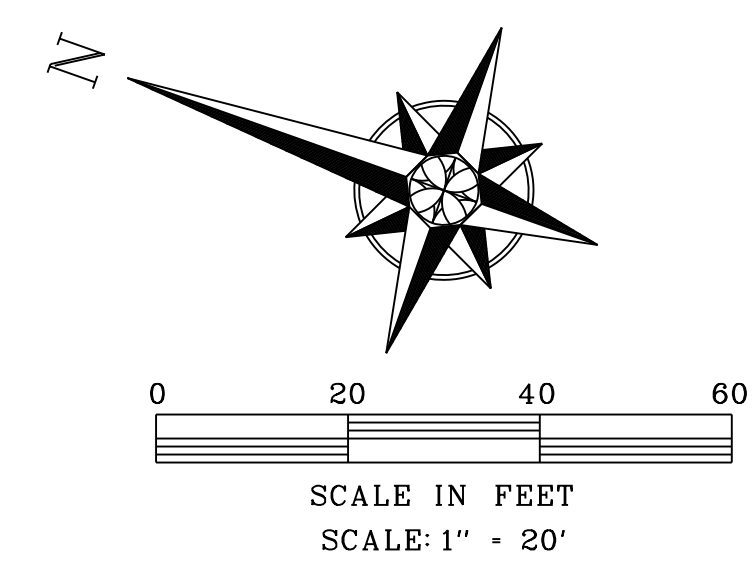
I-70 ON-RAMP  
PLAN SHEET  
(SHEET 2 OF 2)

DATE PREPARED 3/14/2025	
ROUTE I-170/ RAMP 13	STATE MO
DISTRICT SL	SHEET NO. 5
COUNTY ST. LOUIS	
JOB NO. XXXXXX	
CONTRACT ID. .	
PROJECT NO. .	
BRIDGE NO. .	
DESCRIPTION	
DATE	
MISSOURI HIGHWAYS AND TRANSPORTATION COMMISSION	
	
105 WEST CAPITOL JEFFERSON CITY, MO 65102 1-888-ASK-MODOT (1-888-275-6636)	
	
JACOBS ENGINEERING GROUP 501 NORTH BROADWAY ST. LOUIS, MISSOURI 63102-2121 PHONE: (314) 335-4000 CERTIFICATE OF AUTHORITY #00704	

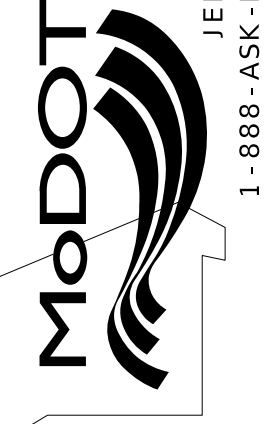
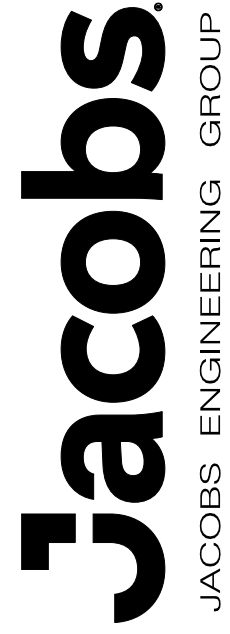
IF A SEAL IS PRESENT ON THIS SHEET IT HAS BEEN ELECTRONICALLY SEALED AND DATED.



**NOTE:**  
ALL UTILITIES SHOWN TO BE USED IN PLACE UNLESS OTHERWISE NOTED.



I-70 ON-RAMP  
UTILITY PLAN  
(SHEET 1 OF 2)

DATE PREPARED 3/14/2025	
ROUTE I-170/ RAMP 13	STATE MO
DISTRICT SL	SHEET NO. 6
COUNTY ST. LOUIS	
JOB NO. XXXXXX	
CONTRACT ID.	
PROJECT NO.	
BRIDGE NO.	
DESCRIPTION	
DATE	
MISSOURI HIGHWAYS AND TRANSPORTATION COMMISSION	
 105 WEST CAPITOL JEFFERSON CITY, MO 65102 1-888-ASK-MODOT (1-888-275-6636)	
 JACOBS ENGINEERING GROUP 501 NORTH BROADWAY ST. LOUIS, MISSOURI 63102-2121 PHONE: (314) 335-4000 CERTIFICATE OF AUTHORITY #00704	

IF A SEAL IS PRESENT ON THIS SHEET IT HAS BEEN ELECTRONICALLY SEALED AND DATED.

