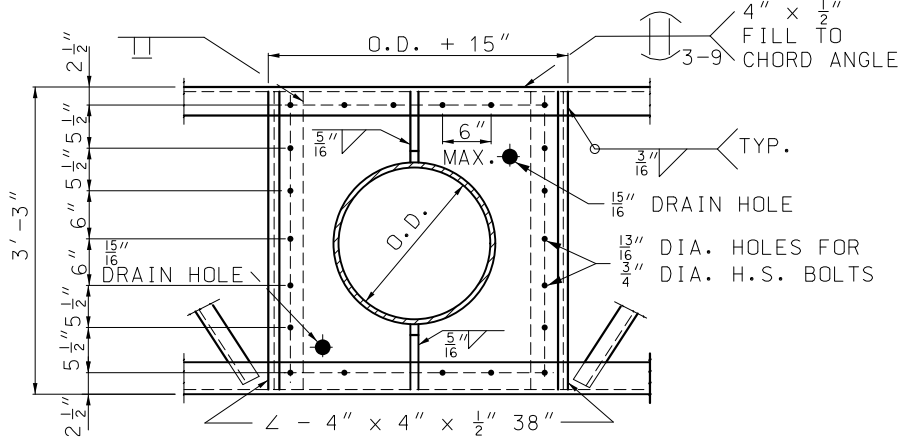
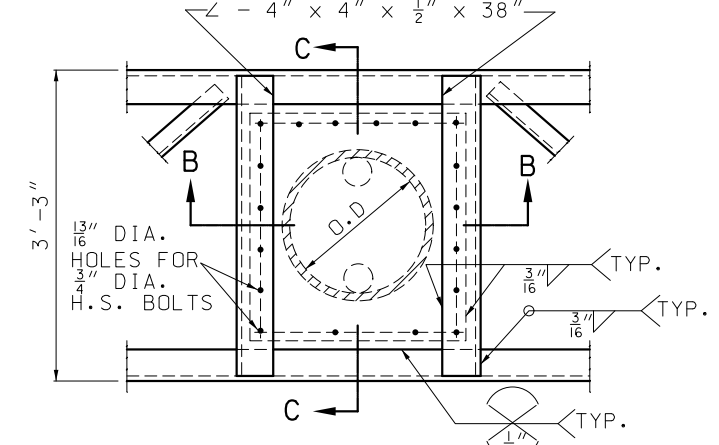


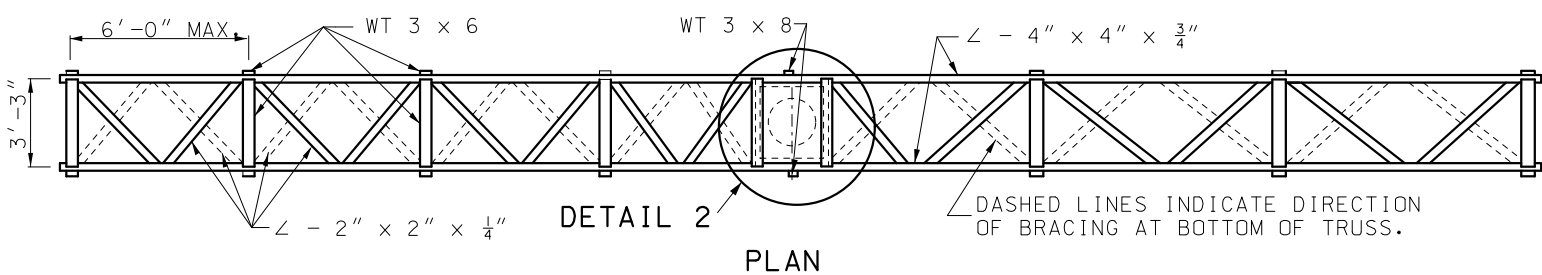
**DETAIL 1**  
TRUSS BOTTOM CONNECTION TO COLUMN



**SECTION A-A**

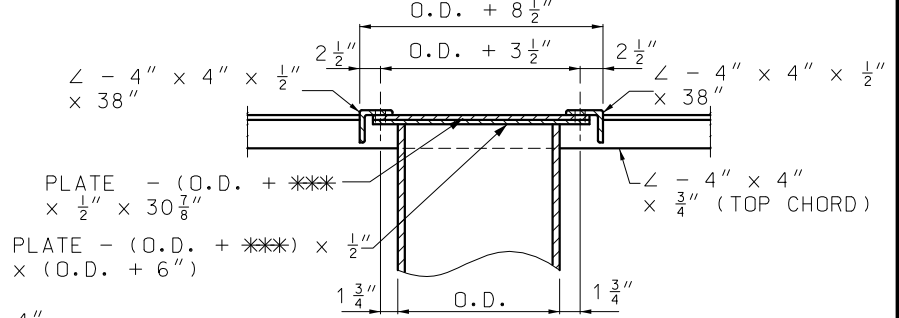


**DETAIL 2**  
TRUSS TOP CONNECTION TO COLUMN

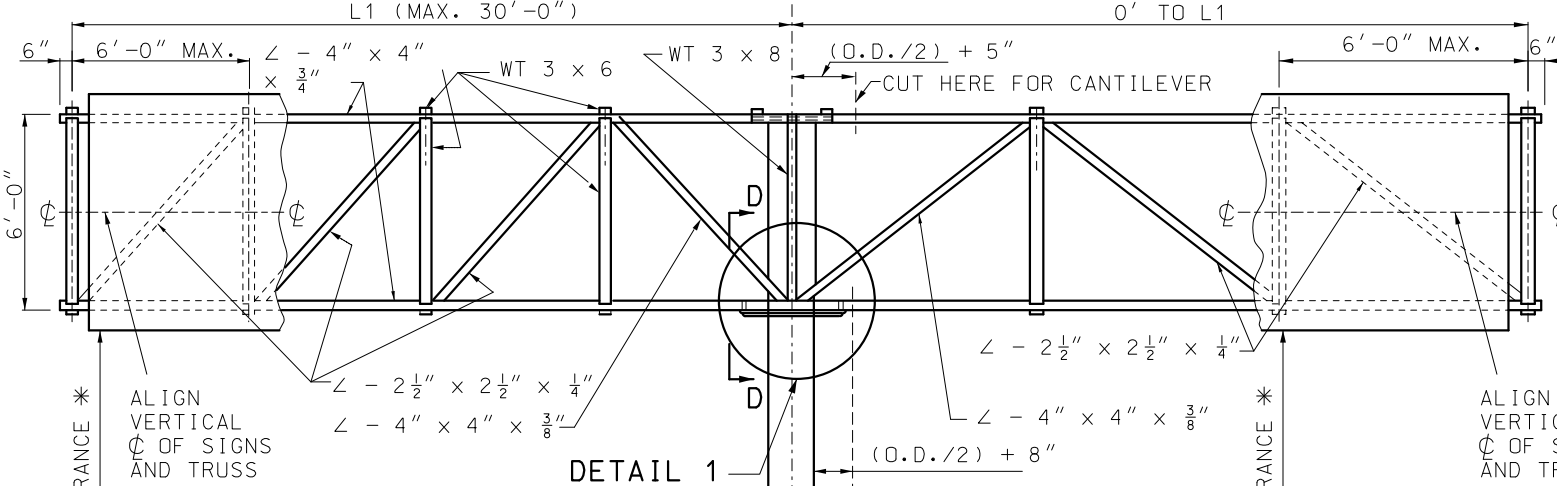


**DETAIL 2**  
**PLAN**

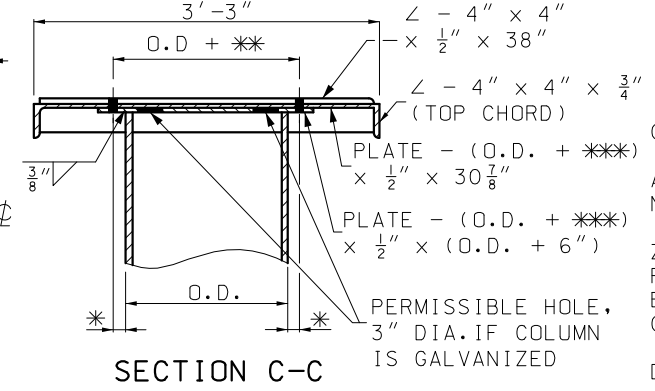
- \* 1 1/2" FOR POST TYPE VII  
1 3/4" FOR ALL OTHER POST TYPES
- \*\* 3" FOR POST TYPE VII  
3 1/2" FOR ALL OTHER POST TYPES
- \*\*\* 5 1/2" FOR POST TYPE VII  
6" FOR ALL OTHER POST TYPES



**SECTION B-B**



**DETAIL 1**



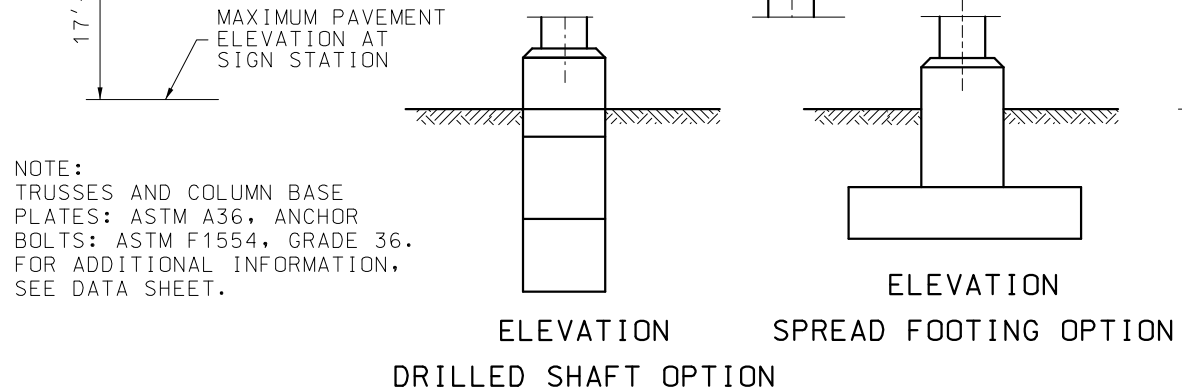
**SECTION C-C**

**GENERAL NOTES:**  
ALL FASTENERS SHALL HAVE A HARDENED WASHER UNDER THE NUT OR BOLT HEAD, WHICHEVER IS TURNED IN TIGHTENING.  
ZINC CHROMATE PRIMER SHALL MEET THE REQUIREMENTS OF FEDERAL SPECIFICATION TT-P-645 OR TT-P-1757 AND SHALL BE ACCEPTED ON THE BASIS OF THE LABEL SHOWING CONFORMANCE OR A MANUFACTURER'S CERTIFICATION.

DESIGN OF STRUCTURAL SUPPORTS SHALL COMPLY WITH AASHTO STANDARD SPECIFICATIONS FOR STRUCTURAL SUPPORTS FOR HIGHWAY SIGNS, LUMINAIRES AND TRAFFIC SIGNALS 2001 AND CURRENT INTERIMS.  
DESIGN OF SPREAD FOOTINGS SHALL COMPLY WITH 1994 AASHTO STANDARD SPECIFICATIONS FOR STRUCTURAL SUPPORTS FOR HIGHWAY SIGNS, LUMINAIRES AND TRAFFIC SIGNALS.

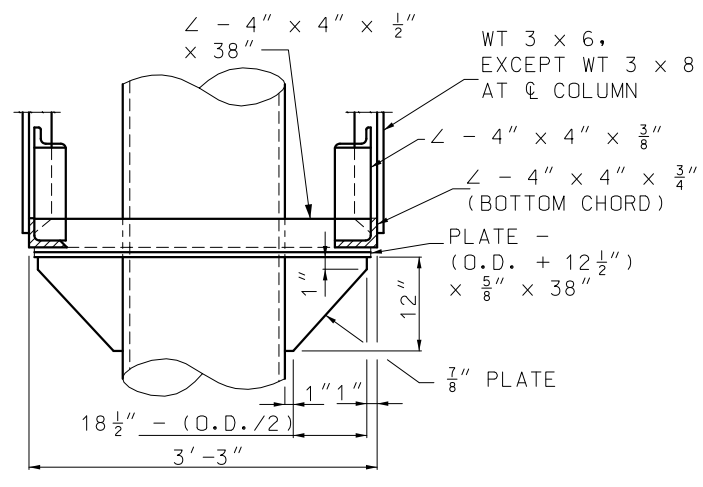
ALL SIGNS SHALL BE CENTERED VERTICALLY ABOUT THE HORIZONTAL  $\phi$  OF THE TRUSS.

\* IF LIGHTING IS SPECIFIED, VERTICAL CLEARANCE IS MEASURED TO THE LOWEST POINT OF LIGHTING BRACKET.  
\* ALIGN VERTICAL  $\phi$  OF SIGNS AND TRUSS  
\* 17'-6" MIN. CLEARANCE



**ELEVATION DRILLED SHAFT OPTION**  
**ELEVATION SPREAD FOOTING OPTION**

**NOTE:**  
TRUSSES AND COLUMN BASE PLATES: ASTM A36, ANCHOR BOLTS: ASTM F1554, GRADE 36. FOR ADDITIONAL INFORMATION, SEE DATA SHEET.



**SECTION D-D**

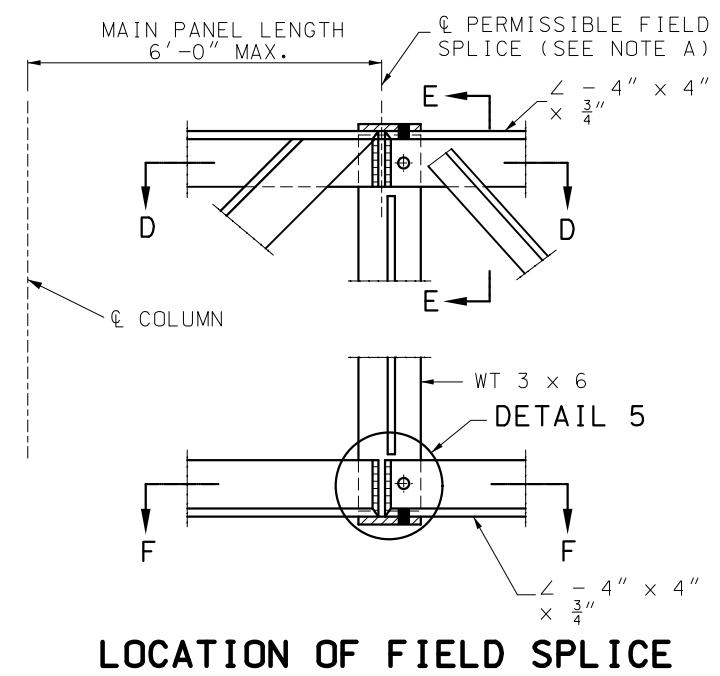
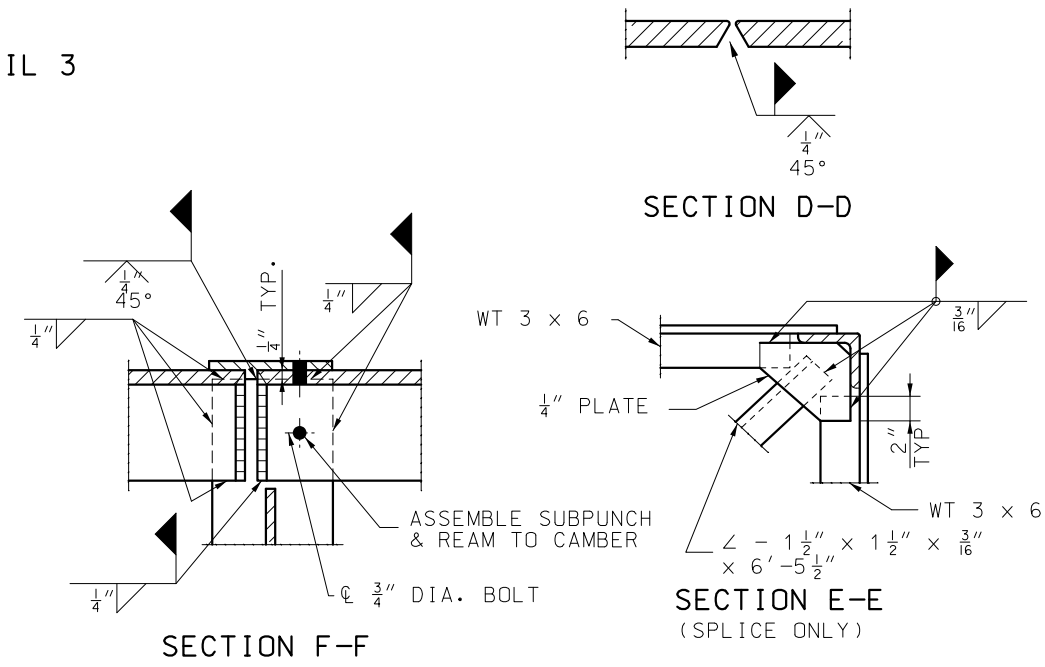
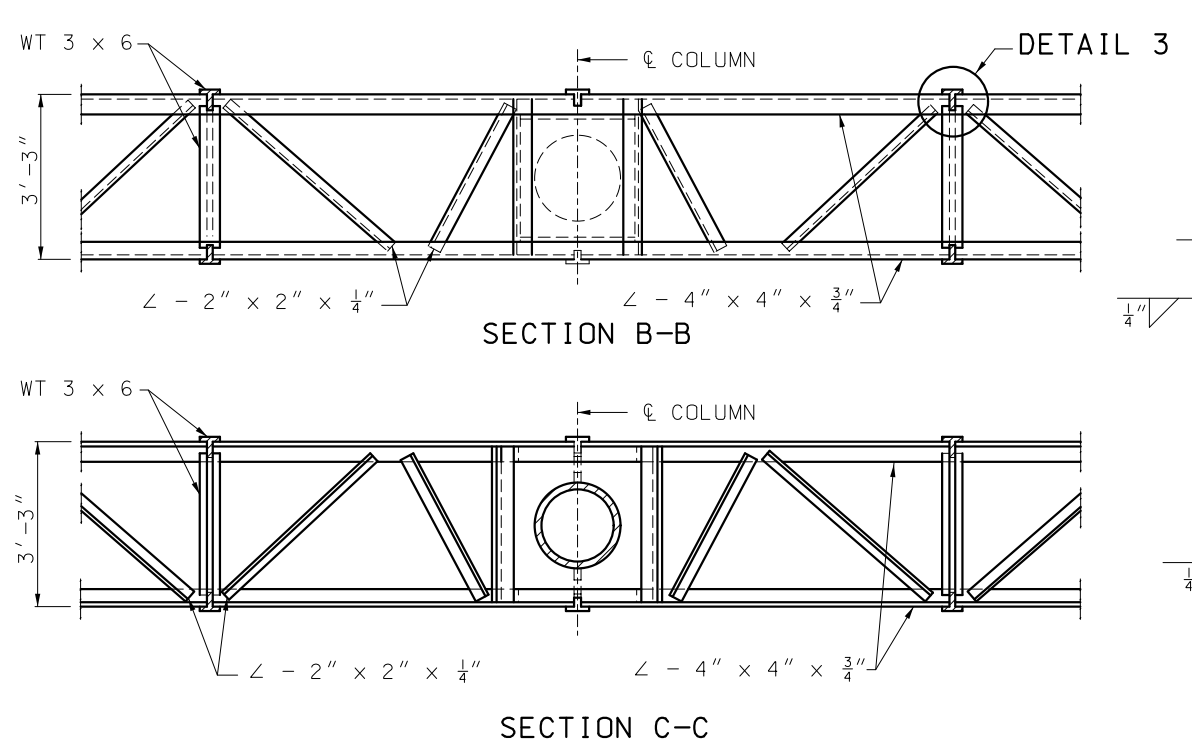
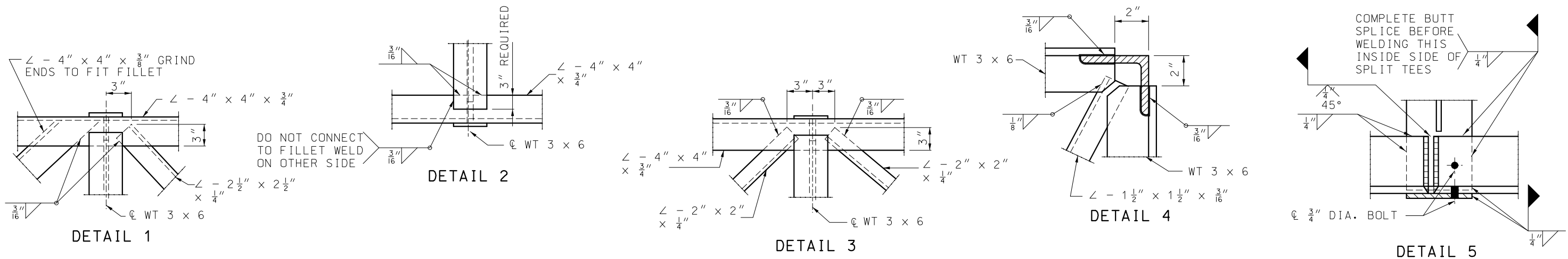
**MoDOT** MISSOURI HIGHWAYS AND TRANSPORTATION COMMISSION  
105 WEST CAPITOL JEFFERSON CITY, MO 65102  
1-888-ASK-MODOT (1-888-275-6636)

STATE OF MISSOURI  
NICOLE A. KOLB HOOD  
NUMBER PE-2001018754  
PROFESSIONAL ENGINEER  
THIS SHEET HAS BEEN SIGNED, SEALED AND DATED ELECTRONICALLY.

**OVERHEAD SIGN TRUSSES**  
BUTTERFLY AND CANTILEVER  
STRUCTURAL STEEL

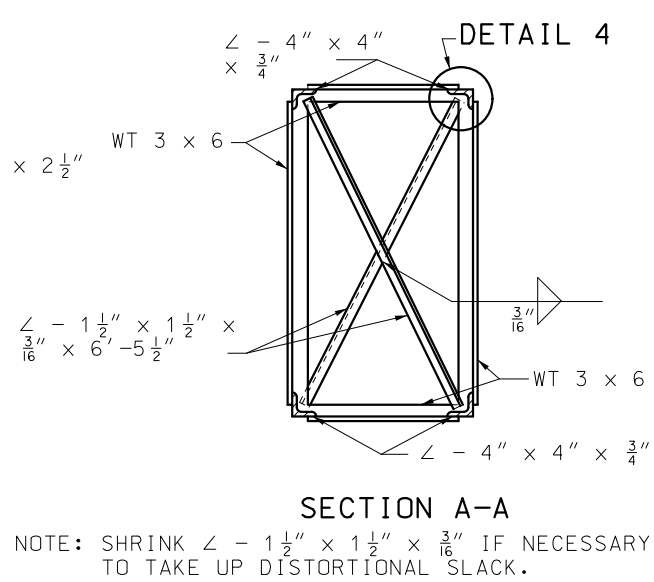
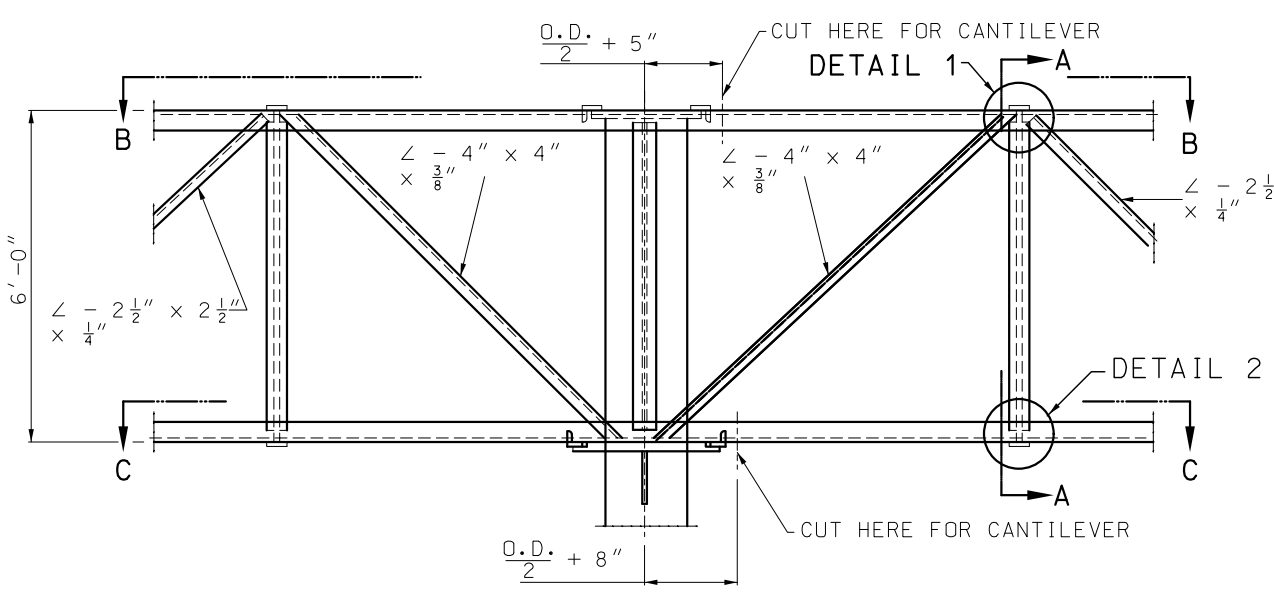
DATE EFFECTIVE: 01-01-2021	<b>903.12AA</b>	SHEET NO. 1 OF 7
DATE PREPARED: 10/14/2020		

IF A SEAL IS PRESENT ON THIS SHEET IT HAS BEEN ELECTRONICALLY SEALED AND DATED.



NOTE: 3/4" DIA. BOLTS SHALL BE REMOVED AFTER WELDING IS COMPLETE. BOLT HOLES SHALL BE PLUGGED AND THE OUTSIDE FACE GROUND SMOOTH.

NOTE A: SPLICING CHORD ANGLES IN THE SHOP AND THE FIELD SPLICE SHOWN IN THIS SHEET WILL NOT BE ALLOWED WITHOUT SPECIAL PERMISSION. IF PERMISSION IS GRANTED SUCH SPLICES SHALL BE LOCATED AT THE CENTER LINE OF MAIN PANEL POINT NEXT TO COLUMN.



**MoDOT** MISSOURI HIGHWAYS AND TRANSPORTATION COMMISSION  
 105 WEST CAPITOL JEFFERSON CITY, MO 65102  
 1-888-ASK-MODOT (1-888-275-6636)

STATE OF MISSOURI  
 NICOLE A. KOLB HOOD  
 NUMBER PE-2001018754  
 PROFESSIONAL ENGINEER  
 THIS SHEET HAS BEEN SIGNED, SEALED AND DATED ELECTRONICALLY.

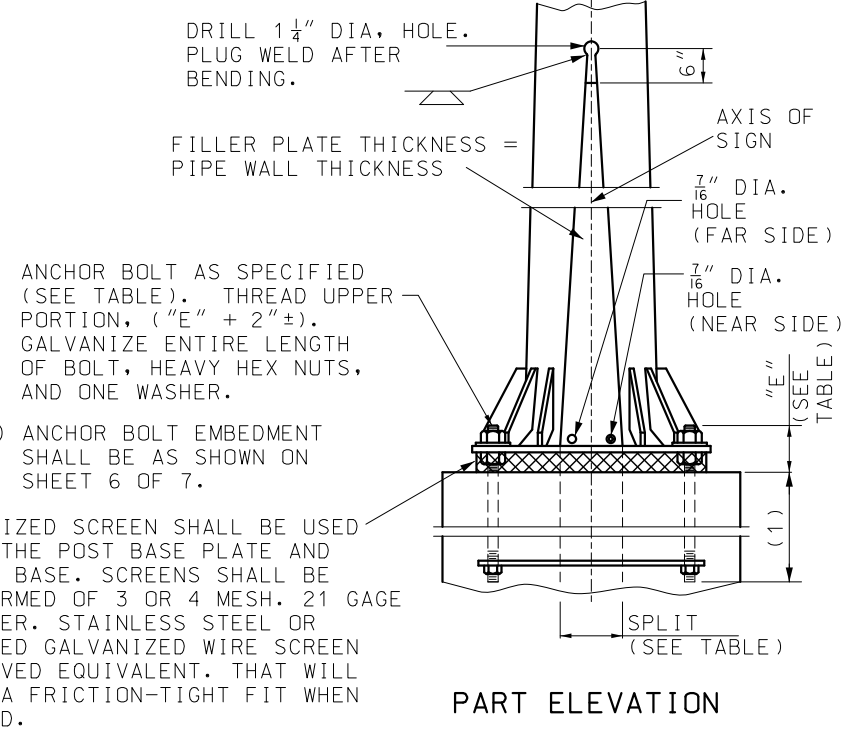
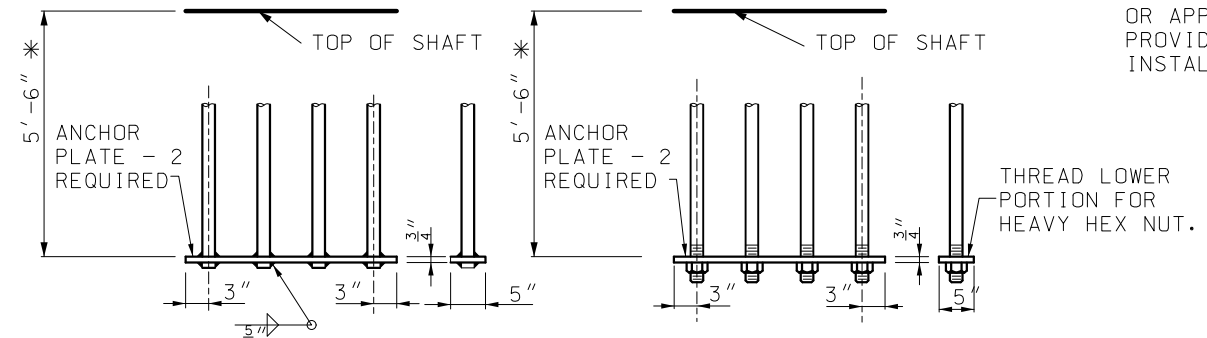
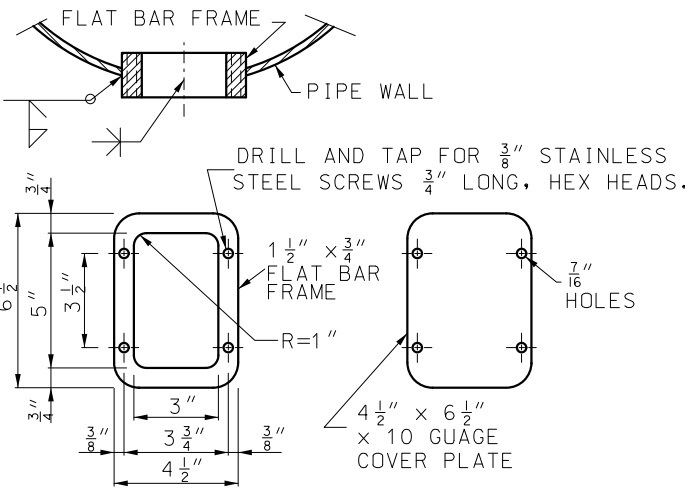
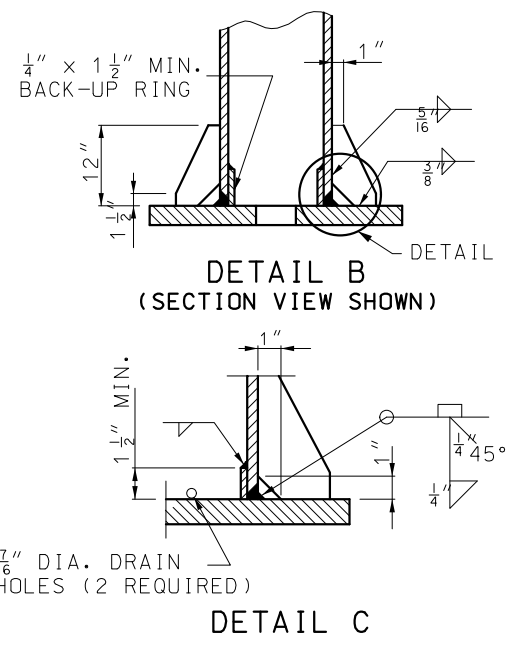
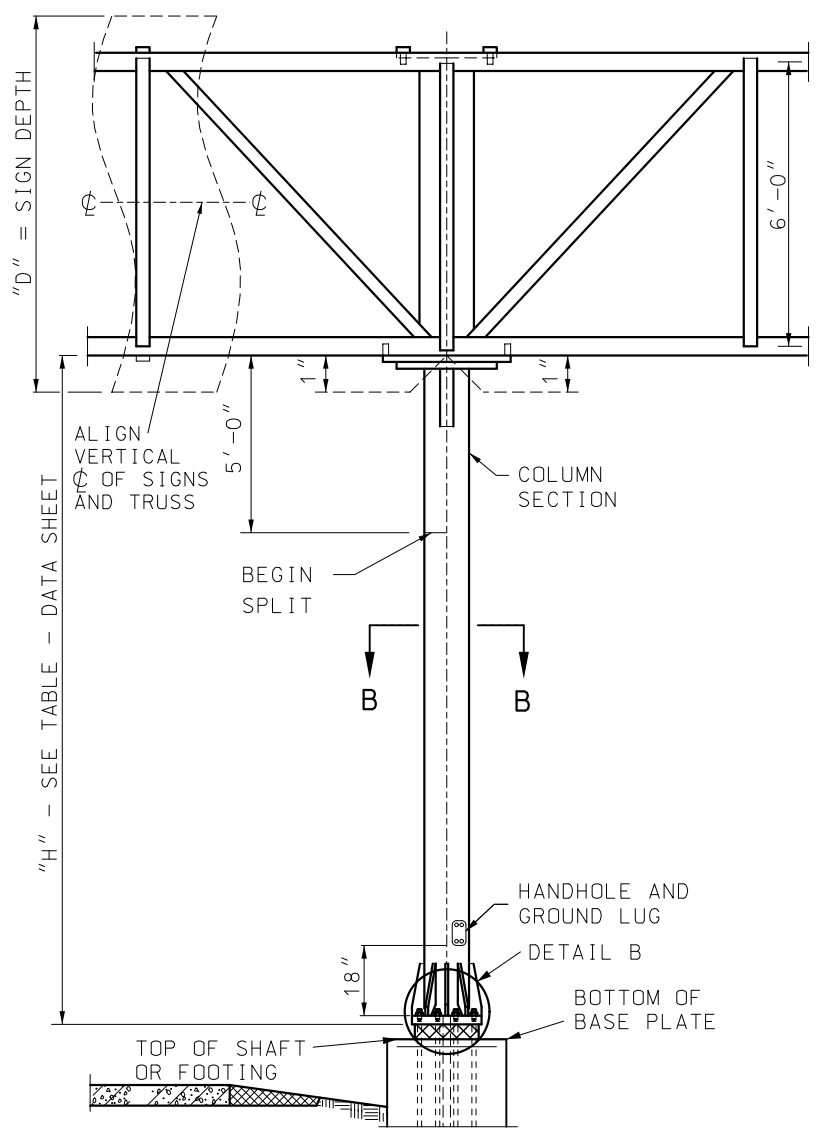
**OVERHEAD SIGN TRUSSES**  
 BUTTERFLY & CANTILEVER  
 STRUCTURAL STEEL

DATE EFFECTIVE: 01-01-2021  
 DATE PREPARED: 10/14/2020

**903.12AA**

SHEET NO. 2 OF 7

IF A SEAL IS PRESENT ON THIS SHEET IT HAS BEEN ELECTRONICALLY SEALED AND DATED.



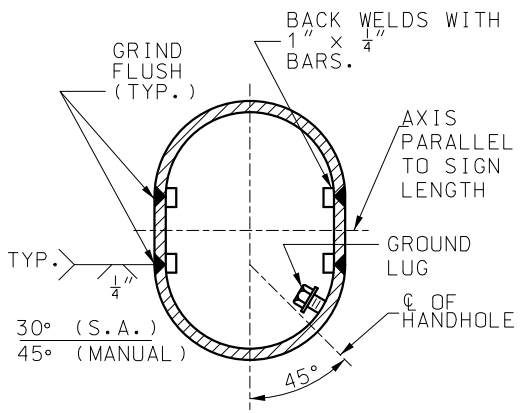
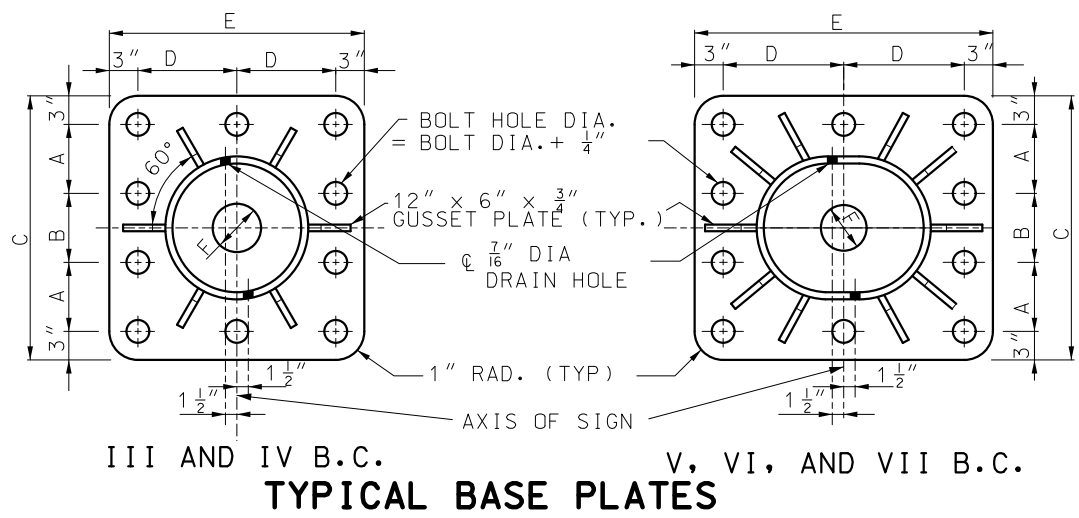
A GALVANIZED SCREEN SHALL BE USED BETWEEN THE POST BASE PLATE AND CONCRETE BASE. SCREENS SHALL BE PRESS-FORMED OF 3 OR 4 MESH, 21 GAGE OR HEAVIER, STAINLESS STEEL OR HOT-DIPPED GALVANIZED WIRE SCREEN OR APPROVED EQUIVALENT. THAT WILL PROVIDE A FRICTION-TIGHT FIT WHEN INSTALLED.

GENERAL NOTES:  
 SUBSTRUCTURE SHALL BE BACKFILLED PRIOR TO ERECTION OF POST.  
 ASTM A 106 GRADE B STEEL PIPE OR A TAPERED TUBE OF EQUIVALENT SIZE AND THICKNESS MAY BE SUBSTITUTED FOR PIPE POST.  
 ALL STEEL PIPE COLUMNS SHALL BE EITHER GRADE "B" SEAMLESS STEEL PIPE OR GRADE "B" ELECTRIC RESISTANCE WELDED STEEL PIPE; ASTM SPECIFICATION A53.

ALL STRUCTURES SHALL BE GROUNDED.  
 BURR THREADS ON ALL ANCHOR BOLTS.  
 A HORIZONTAL WELDED SPLICE MAY BE FABRICATED IN THE COLUMN BETWEEN THE TOP OF PIPE AND 4'-0" BELOW THE BOTTOM CHORDS OF THE TRUSS WHEN DETAILED ON THE SHOP DRAWINGS AND APPROVED BY THE ENGINEER.

GROUND LUGS SHALL BE LOCATED INSIDE COLUMN NEAR HAND HOLE.  
 ALL SIGNS SHALL BE CENTERED VERTICALLY ABOUT THE HORIZONTAL C OF THE TRUSS.

TYPICAL BASE PLATE (10 ANCHOR TYPE) BUTTERFLY AND CANTILEVER (B.C.)					
	III	IV	V	VI	VII
A	8"	9"	8"	9"	10 1/2"
B	10"	10"	10"	10"	11"
C	32"	34"	32"	34"	38"
D	13"	14"	16 1/2"	18"	20"
E	32"	34"	39"	42"	46"
F	6"	6"	6"	6"	6"



NOTE:  
 FOR DETAILS OF OPTIONAL SUBSTRUCTURES, SEE OTHER SHEETS.  
 ANCHOR BOLTS AND PLATE NOT SHOWN.

**MISSOURI HIGHWAYS AND TRANSPORTATION COMMISSION**

105 WEST CAPITOL  
JEFFERSON CITY, MO 65102  
1-888-ASK-MODOT (1-888-275-6636)

**OVERHEAD SIGN TRUSS  
COLUMN AND BASE PLATES**

THIS SHEET HAS BEEN SIGNED, SEALED AND DATED ELECTRONICALLY.

DATE EFFECTIVE: 01-01-2021  
DATE PREPARED: 10/14/2020

**903.12AA**

SHEET NO.  
3 OF 7


IF A SEAL IS PRESENT ON THIS SHEET IT HAS BEEN ELECTRONICALLY SEALED AND DATED.

DRILLED SHAFT OPTION																									ALTERNATE PEDESTALS						
POST TYPE	PIPE COLUMN		"E"	SPLIT	BASE PLATE SIZE**	ANCHOR BOLT		C	FA	FB	FC	FD	FH	COLLAR REINFORCEMENT						SHAFT REINFORCEMENT				REBAR TOTAL (LBS.)	CONCRETE (CU. YDS.)	REBAR TOTAL (LBS.)		CONCRETE (CU. YDS.)			
	O.D.	WEIGHT (LBS.)				NO.	DIA.							MOMENT-C1		SHEAR-C2		SKIN-C3		LONGITUDINAL S1		SHEAR-S2				REBAR TOTAL (LBS.)	CONCRETE (CU. YDS.)	TYPE A	TYPE C	TYPE A	TYPE C
														BARS	SPACING	BARS	SPACING	BARS	SPACING	QUANTITY	BARS	BARS	SPACING								
III	18"	93.45	8 1/2"	0"	2'-8" x 2'-8" x 1 3/4"	10	2"	2'-10"	4'-0"	7'-6"	1'-6"	4'-6"	14'-0"	#6	6"	#4	12"	#4	12"	19	#10	#5	6"	2126	12.4	2066	2077	13.4	14.5		
IV	20"	104.13	8 1/2"	0"	2'-10" x 2'-10" x 2"	10	2 1/4"	3'-0"	4'-0"	7'-6"	1'-6"	4'-6"	14'-0"	#6	6"	#4	12"	#4	12"	19	#10	#5	6"	2126	12.4	2066	2077	13.5	14.6		
V	18"	93.45	8 1/2"	7"	3'-3" x 2'-8" x 2"	10	2 1/4"	2'-10"	5'-0"	13'-6"	4'-0"	5'-6"	17'-0"	#6	6"	#4	12"	#4	12"	22	#11	#6	6"	3901	26.5	3763	3782	28.8	30.7		
VI	20"	104.13	8 1/2"	8"	3'-6" x 2'-10" x 2 1/4"	10	2 1/4"	3'-0"	5'-0"	14'-0"	4'-0"	6'-0"	18'-0"	#6	6"	#4	12"	#4	12"	27	#11	#6	6"	4742	31.8	4528	4547	34.1	36.2		
VII	24"	125.49	9"	8"	3'-10" x 3'-2" x 2 1/4"	10	2 1/2"	3'-4"	5'-0"	14'-0"	4'-0"	6'-0"	18'-0"	#6	6"	#4	12"	#4	12"	27	#11	#6	6"	4742	31.8	4528	4547	34.5	36.8		

SPREAD FOOTING OPTION																								
POST TYPE	PIPE COLUMN		"E"	SPLIT	BASE PLATE SIZE**	ANCHOR BOLT		PEDESTAL SIZE *		FOOTING SIZE *	LONGITUDINAL FOOTING REINFORCEMENT				PEDESTAL REINFORCEMENT				REBAR TOTAL (LBS.)	CONCRETE (CU. YDS.)				
	O.D.	WEIGHT (LBS.)				NO.	DIA.	a	b		TOP		BOTTOM											
											NO.	BARS	NO.	BARS	NO.	BARS	NO.	BARS			NO.	BARS		
III	18"	93.45	8 1/2"	0"	2'-8" x 2'-8" x 1 3/4"	10	2"	4'-2"	3'-8"	10'-0" x 13'-0"	10	#5	10	#5	10	#4	14	#8	695	14.4				
IV	20"	104.13	8 1/2"	0"	2'-10" x 2'-10" x 2"	10	2 1/4"	4'-4"	3'-10"	10'-0" x 14'-0"	10	#5	10	#5	10	#4	14	#8	733	15.6				
V	18"	93.45	8 1/2"	7"	3'-3" x 2'-8" x 2"	10	2 1/4"	4'-9"	3'-8"	9'-0" x 17'-0"	9	#5	10	#7	10	#4	14	#8	955	16.5				
VI	20"	104.13	8 1/2"	8"	3'-6" x 2'-10" x 2 1/4"	10	2 1/4"	5'-0"	3'-10"	9'-0" x 19'-0"	9	#5	10	#7	10	#4	14	#8	1028	18.4				
VII	24"	125.49	9"	8"	3'-10" x 3'-2" x 2 1/4"	10	2 1/2"	5'-4"	4'-2"	10'-0" x 20'-0"	9	#5	12	#7	10	#4	14	#8	1196	21.5				

SPREAD FOOTING OPTION WITH ALTERNATE PEDESTALS																															
POST TYPE	PIPE COLUMN		"E"	SPLIT	BASE PLATE SIZE**	ANCHOR BOLT		PEDESTAL SIZE *			FOOTING SIZE *	TYPE A LONGITUDINAL FOOTING REINFORCEMENT				TYPE A PEDESTAL REINFORCEMENT				TYPE A REBAR TOTAL (LBS.)	TYPE A CONCRETE (CU. YDS.)	TYPE C LONGITUDINAL FOOTING REINFORCEMENT				TYPE C PEDESTAL REINFORCEMENT				TYPE C REBAR TOTAL (LBS.)	TYPE C CONCRETE (CU. YDS.)
	O.D.	WEIGHT (LBS.)				NO.	DIA.	c	d	e		TOP		BOTTOM								TOP		BOTTOM							
												NO.	BARS	NO.	BARS	NO.	BARS	NO.	BARS			NO.	BARS	NO.	BARS	NO.	BARS	NO.	BARS		
III	18"	93.45	8 1/2"	0"	2'-8" x 2'-8" x 1 3/4"	10	2"	2'-10"	6'-6"	15"	10'-0" x 13'-0"	10	#5	10	#5	10	#4	14	#8	757	14.4	10	#4	10	#5	12	#4	14	#8	800	15.3
IV	20"	104.13	8 1/2"	0"	2'-10" x 2'-10" x 2"	10	2 1/4"	3'-0"	6'-9"	18"	10'-0" x 14'-0"	10	#5	10	#5	10	#4	14	#8	795	15.6	10	#4	10	#5	12	#4	14	#8	839	16.5
V	18"	93.45	8 1/2"	7"	3'-3" x 2'-8" x 2"	10	2 1/4"	2'-10"	7'-0"	12"	9'-0" x 17'-0"	9	#5	10	#7	10	#4	14	#8	1015	16.5	10	#4	10	#7	12	#4	14	#8	1059	17.5
VI	20"	104.13	8 1/2"	8"	3'-6" x 2'-10" x 2 1/4"	10	2 1/4"	3'-0"	7'-6"	15"	9'-0" x 19'-0"	9	#5	10	#7	10	#4	14	#8	1099	18.4	10	#4	10	#7	12	#4	14	#8	1134	19.5
VII	24"	125.49	9"	8"	3'-10" x 3'-2" x 2 1/4"	10	2 1/2"	3'-4"	7'-10"	15"	10'-0" x 20'-0"	9	#5	12	#7	10	#4	14	#8	1257	21.5	10	#4	12	#7	12	#4	14	#8	1302	22.6

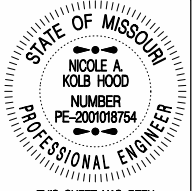
\* BASE PLATES, PEDESTAL AND FOOTINGS, LONGER SIDES SHALL BE NORMAL TO AXIS OF SIGN.  
 \*\* BASE PLATES, PEDESTAL AND FOUNDATIONS, LONGER SIDES SHALL BE NORMAL TO AXIS OF SIGN.



**MISSOURI HIGHWAYS AND TRANSPORTATION COMMISSION**

105 WEST CAPITOL  
JEFFERSON CITY, MO 65102  
1-888-ASK-MODOT (1-888-275-6636)

**OVERHEAD SIGN TRUSSES**  
OPTIONAL SUBSTRUCTURE DATA



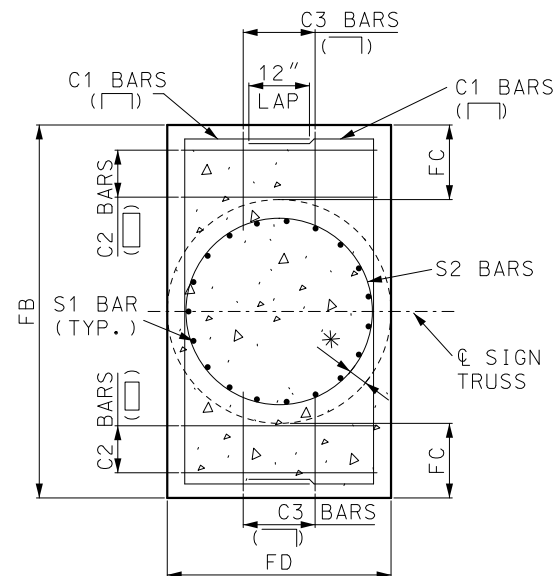
THIS SHEET HAS BEEN SIGNED, SEALED AND DATED ELECTRONICALLY.

DATE EFFECTIVE: 01-01-2021  
DATE PREPARED: 10/14/2020

**903.12AA**

SHEET NO.  
4 OF 7

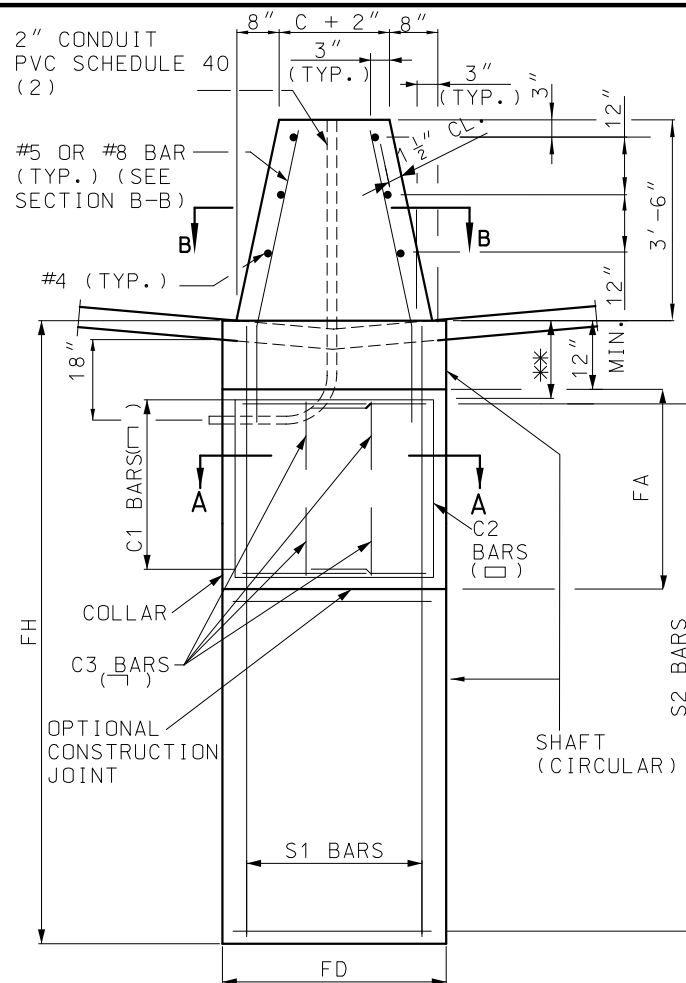
IF A SEAL IS PRESENT ON THIS SHEET IT HAS BEEN ELECTRONICALLY SEALED AND DATED.



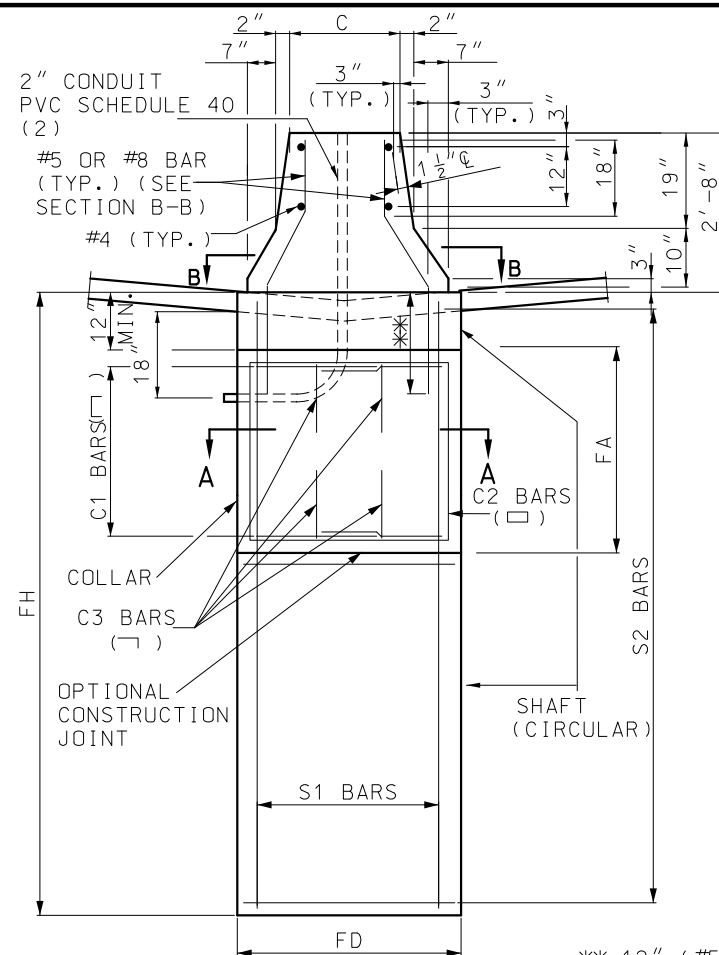
**SECTION A-A**  
(TYPICAL SECTION SHOWING REINFORCING STEEL)

\* 4" CLEAR FOR FD = 4'-6"  
6" CLEAR FOR FD > 4'-6"

VERTICAL LEG OF C3 SHALL BE PLACED INSIDE SHAFT S2 BARS.

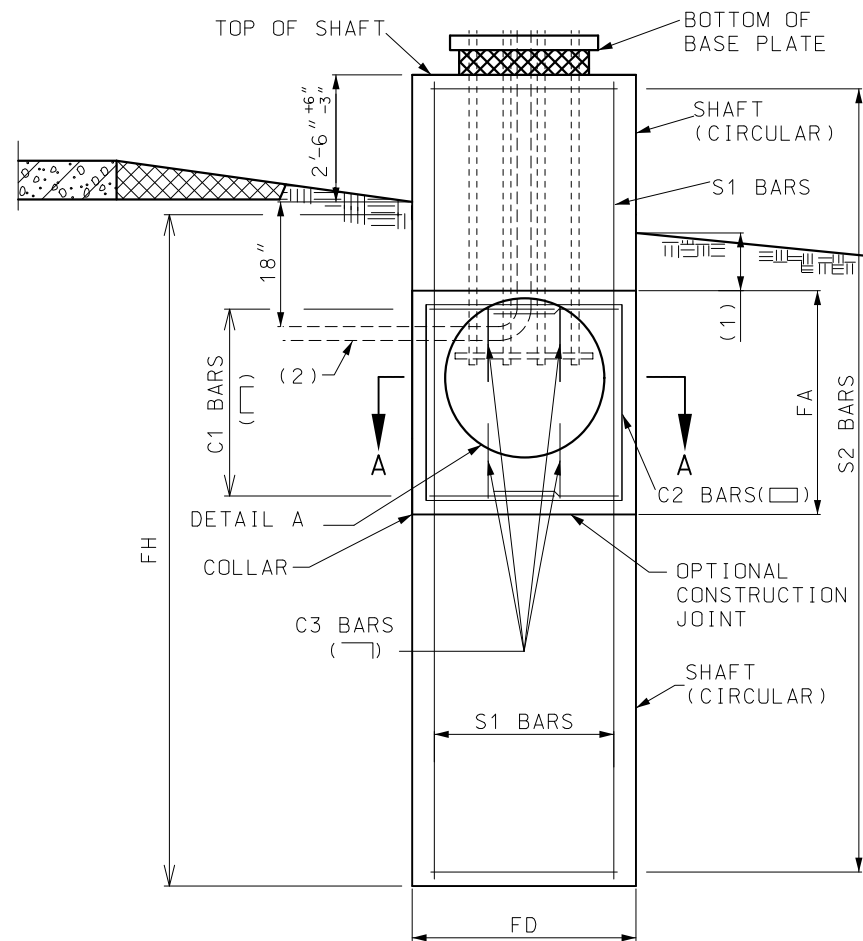


**PART ELEVATION**  
(TYPE C CONCRETE TRAFFIC BARRIER)



**PART ELEVATION**  
(TYPE A CONCRETE TRAFFIC BARRIER)

\*\* 12" (#5 BAR)  
2'-4" (#8 BAR)

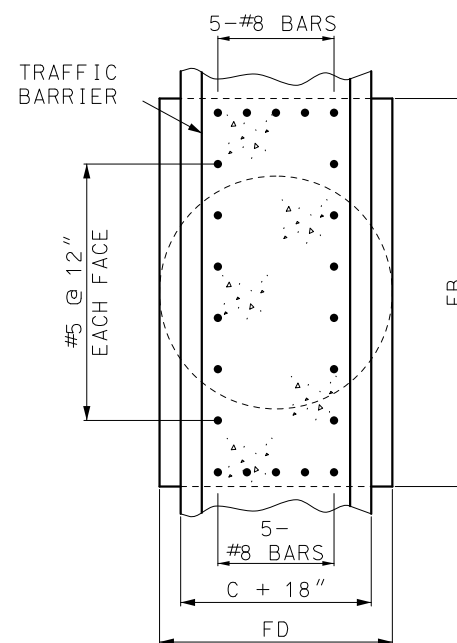


**ELEVATION**

BACKFILL SHALL BE IN PLACE PRIOR TO ERECTION OF POST

- (1) 12" MIN. TO 24" MAX.
- (2) 2" CONDUIT IN THE CONCRETE PEDESTAL SHALL BE PVC SCHEDULE 40 AND SHALL BE PLACED WITH A MINIMUM BEND RADIUS OF 9 1/2"

**DETAILS OF ALTERNATE PEDESTAL**  
(TO BE USED ADJACENT TO TYPE A OR TYPE C MEDIAN BARRIER)



**SECTION B-B**

**GENERAL NOTES:**

SHAFT AND COLLAR SHALL BE CLASS B (P.C.C.).

MINIMUM CLEARANCE TO REINFORCEMENT IS 3" EXCEPT AS SHOWN.

WHEN ROCK IS ENCOUNTERED AT A DEPTH NOT EXCEEDING "FH"/2 FOR FD > 3'-0" OR "FH"/4 FOR FD ≤ 3'-0", THE DIMENSION "FH" MAY BE ADJUSTED TO A MINIMUM OF 3 X "FD", SUBJECT TO APPROVAL BY THE ENGINEER.

CONTACT THE ENGINEER IF WATER TABLE IS ENCOUNTERED DURING EXCAVATION.

PIPE COLUMN, BASE PLATE, ANCHOR BOLTS AND NOTES PERTAINING TO THESE ITEMS HAVE BEEN OMITTED FOR CLARITY. REFER TO SHEET 3 OF 7 FOR DETAILS OF THESE ITEMS.

**MISSOURI HIGHWAYS AND TRANSPORTATION COMMISSION**  
105 WEST CAPITOL  
JEFFERSON CITY, MO 65102  
1-888-ASK-MODOT (1-888-275-6636)

STATE OF MISSOURI  
NICOLE A. KOLB HOOD  
NUMBER PE-2001018754  
PROFESSIONAL ENGINEER  
THIS SHEET HAS BEEN SIGNED, SEALED AND DATED ELECTRONICALLY.

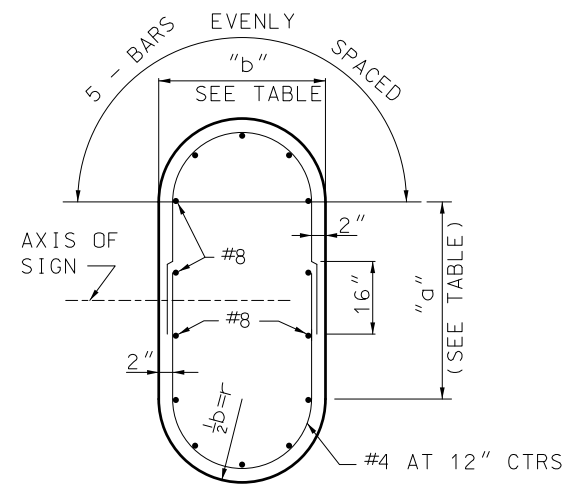
**OVERHEAD SIGN TRUSSES**  
DRILLED SHAFT OPTION

DATE EFFECTIVE: 01-01-2021  
DATE PREPARED: 10/14/2020

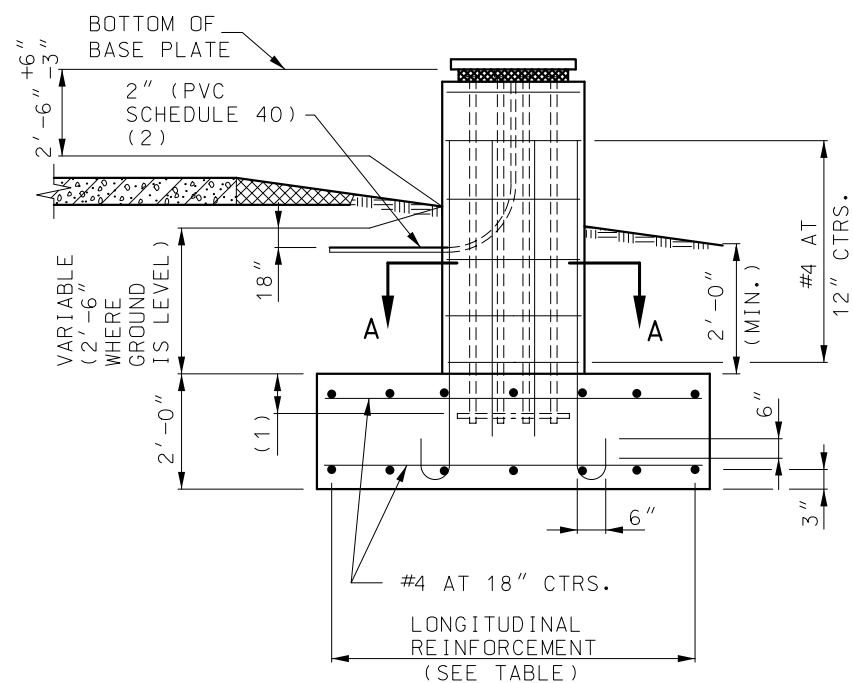
**903.12AA**

SHEET NO.  
5 OF 7

IF A SEAL IS PRESENT ON THIS SHEET IT HAS BEEN ELECTRONICALLY SEALED AND DATED.

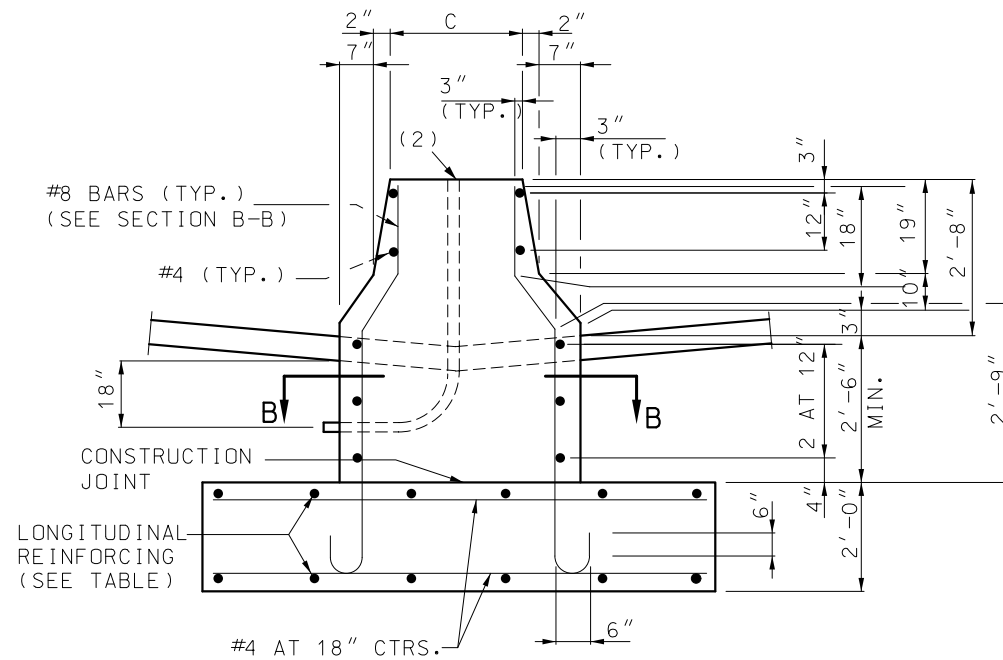


SECTION A-A  
(TYPICAL SECTION SHOWING REINFORCING STEEL)

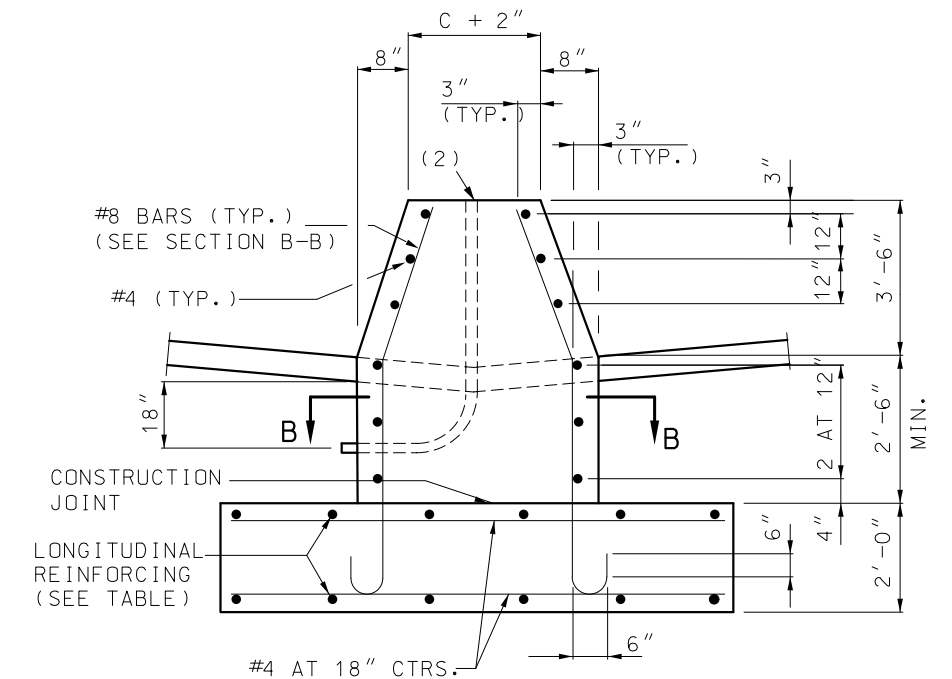


ELEVATION

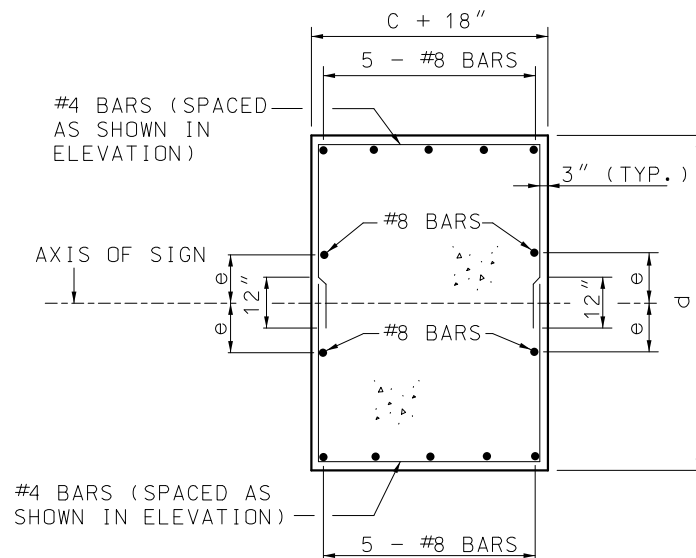
- (1)  $12'' \pm \frac{6''}{-3''}$  (DETAIL FOR 12" FIELD TOLERANCE)
- (2) 2" CONDUIT IN THE CONCRETE PEDESTAL SHALL BE PVC SCHEDULE 40 AND SHALL BE PLACED WITH A MINIMUM BEND RADIUS OF  $9\frac{1}{2}''$ .



PART ELEVATION  
(TYPE A CONCRETE TRAFFIC BARRIER)



PART ELEVATION  
(TYPE C CONCRETE TRAFFIC BARRIER)



SECTION B-B  
TYPICAL SECTION SHOWING  
REINFORCING STEEL  
DETAILS OF ALTERNATE PEDESTAL

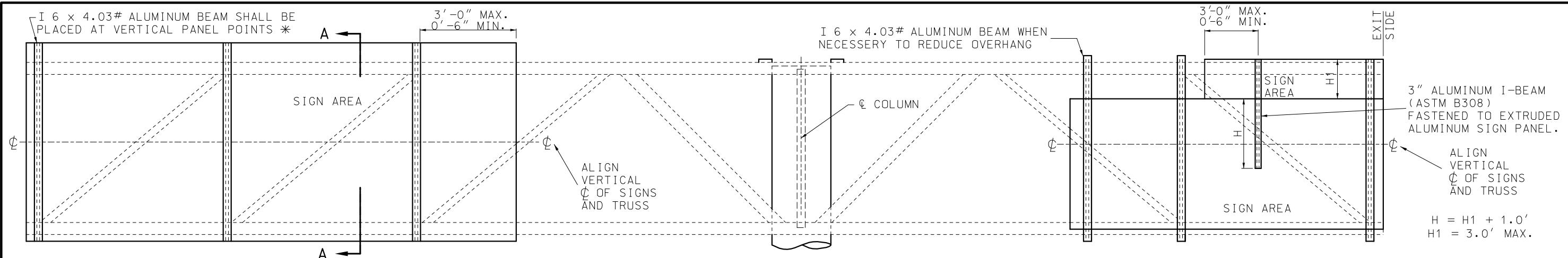
GENERAL NOTES:

- PEDESTAL AND FOOTING SHALL BE CLASS B (P.C.C.).
- MINIMUM CLEARANCE TO REINFORCEMENT IS 3" EXCEPT AS SHOWN.
- CONTACT THE ENGINEER IF WATER TABLE IS ENCOUNTERED DURING EXCAVATION.
- PIPE COLUMN, BASE PLATE, ANCHOR BOLTS AND NOTES PERTAINING TO THESE ITEMS HAVE BEEN OMITTED FOR CLARITY. REFER TO SHEET 3 OF 7 FOR DETAILS OF THESE ITEMS.

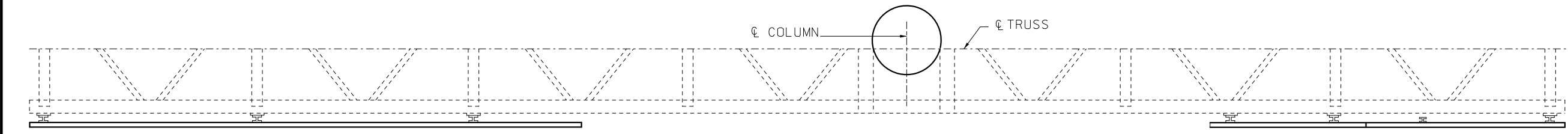
 <b>MISSOURI HIGHWAYS AND TRANSPORTATION COMMISSION</b> 105 WEST CAPITOL JEFFERSON CITY, MO 65102 1-888-ASK-MODOT (1-888-275-6636)	
	<b>OVERHEAD SIGN TRUSSES</b> <b>SPREAD FOOTING</b>
DATE EFFECTIVE: 01-01-2021 DATE PREPARED: 10/14/2020	<b>903.12AA</b>
SHEET NO. <b>6 OF 7</b>	

IF A SEAL IS PRESENT ON THIS SHEET IT HAS BEEN ELECTRONICALLY SEALED AND DATED.

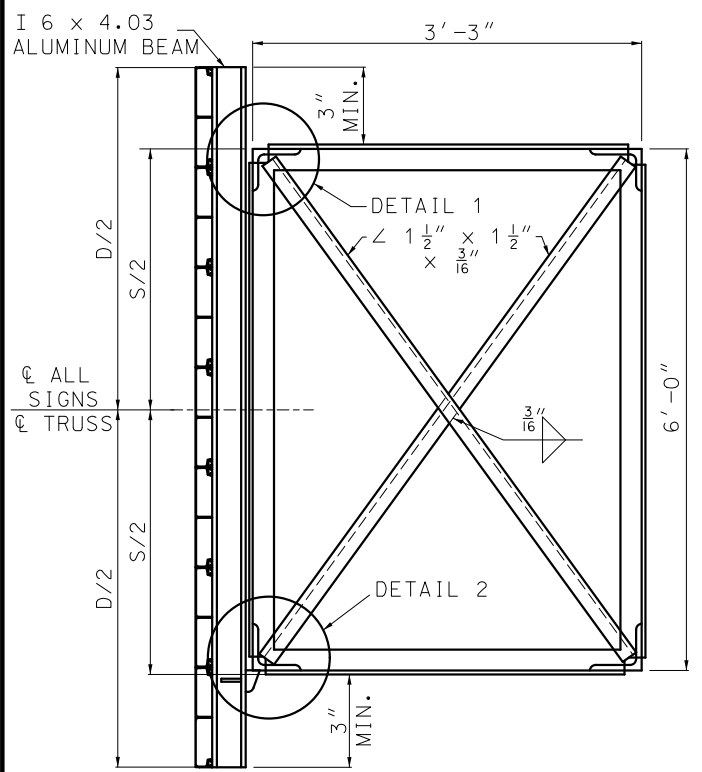
IF A SEAL IS PRESENT ON THIS SHEET IT HAS BEEN ELECTRONICALLY SEALED AND DATED.



**TYPICAL ELEVATION OF SIGNS COMPONENTS**



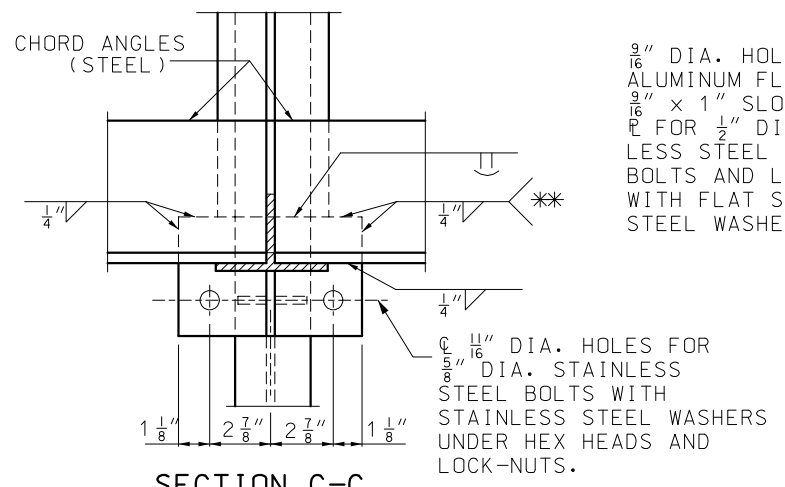
**TYPICAL PLAN OF SIGN COMPONENTS**



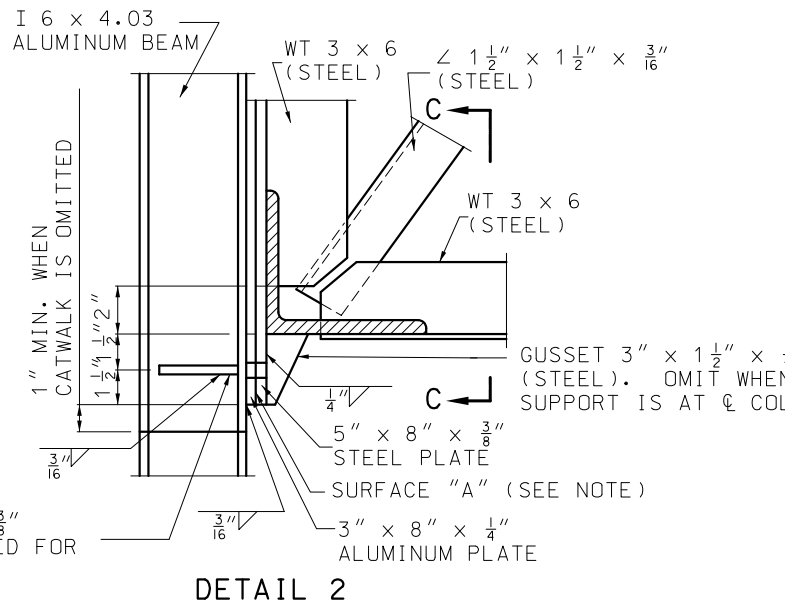
**SECTION A-A  
TYPICAL SECTION  
OF SIGN SUPPORT**

NOTE:  
"D" = GREATEST OVERALL DEPTH  
OF ANY SIGNS ON TRUSSES.

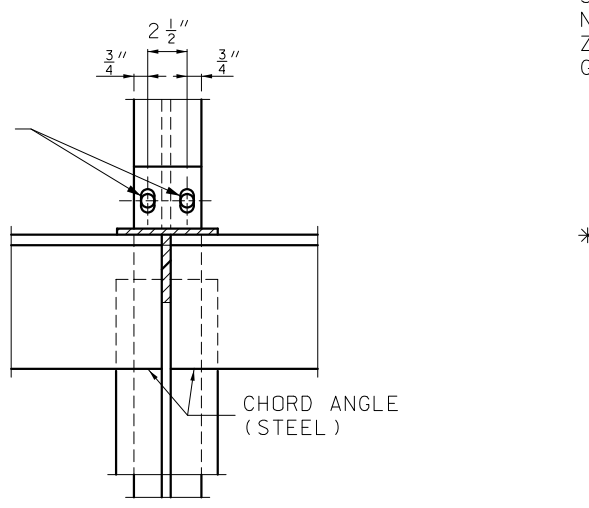
TWO - GUSSETS 5" x 1" x 3/8"  
(ALUM.) OMIT WHEN NOT USED FOR  
CATWALK SUPPORT.



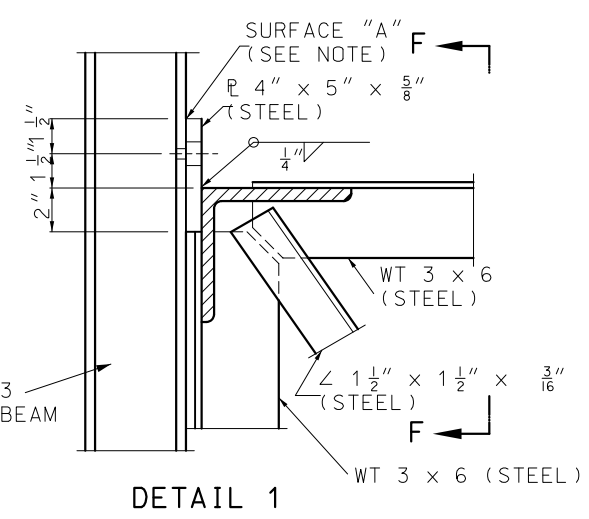
**SECTION C-C**



**DETAIL 2**



**SECTION F-F**



**DETAIL 1**

NOTE:  
SURFACE "A", ZINC CHROMATE ON ALUMINUM SURFACES.  
NORMAL CLEANING AND PAINTING ON STEEL SURFACES.  
ZINC CHROMATE IS NOT REQUIRED WHEN STEEL IS  
GALVANIZED.

\* FOR SIGN HEIGHTS GREATER THAN 17'-0", BUT LESS  
THAN OR EQUAL TO 20'-0" USE ADDITIONAL I 6 x 4.03  
ALUMINUM BEAMS TO ACHIEVE A MAXIMUM SPACING OF  
4'-0" BETWEEN SIGN SUPPORTS.

\*\* WHEN SIGN SUPPORTS ARE PLACED BETWEEN VERTICAL  
PANEL POINTS AS ILLUSTRATED IN TYPICAL ELEVATION  
OF SIGNS COMPONENTS, WELD THE 3/8" STEEL PLATE  
TO THE BOTTOM CHORD WITH A 1/4" FILLET WELD.

**GENERAL NOTES:**

EXIT NO. PANELS SHALL BE MONTED FLUSH WITH THE EXIT  
SIDE OF THE GUIDE SIGN.

ALL SIGNS SHALL BE CENTERED VERTICALLY ABOUT THE  
HORIZONTAL CENTERLINE OF THE TRUSS.

FOR SIGN MOUNTING DETAILS, SEE STANDARD PLANS 903.03.

**MoDOT** MISSOURI HIGHWAYS AND TRANSPORTATION COMMISSION  
105 WEST CAPITOL  
JEFFERSON CITY, MO 65102  
1-888-ASK-MODOT (1-888-275-6636)

STATE OF MISSOURI  
NICOLE A. KOLB HOOD  
NUMBER PE-2001018754  
PROFESSIONAL ENGINEER  
THIS SHEET HAS BEEN  
SIGNED, SEALED AND DATED  
ELECTRONICALLY.

**OVERHEAD SIGN TRUSSES**  
STRUCTURAL STEEL  
BUTTERFLY AND CANTILEVER

DATE EFFECTIVE: 01-01-2021	<b>903.12AA</b>	SHEET NO. 7 OF 7
DATE PREPARED: 10/14/2020		