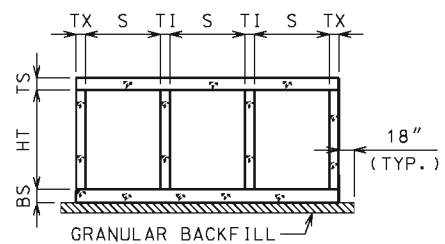
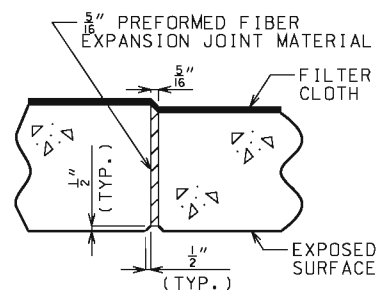


**KEYED CONSTRUCTION JOINT**  
(a) APPROXIMATELY ONE-THIRD OF WALL THICKNESS



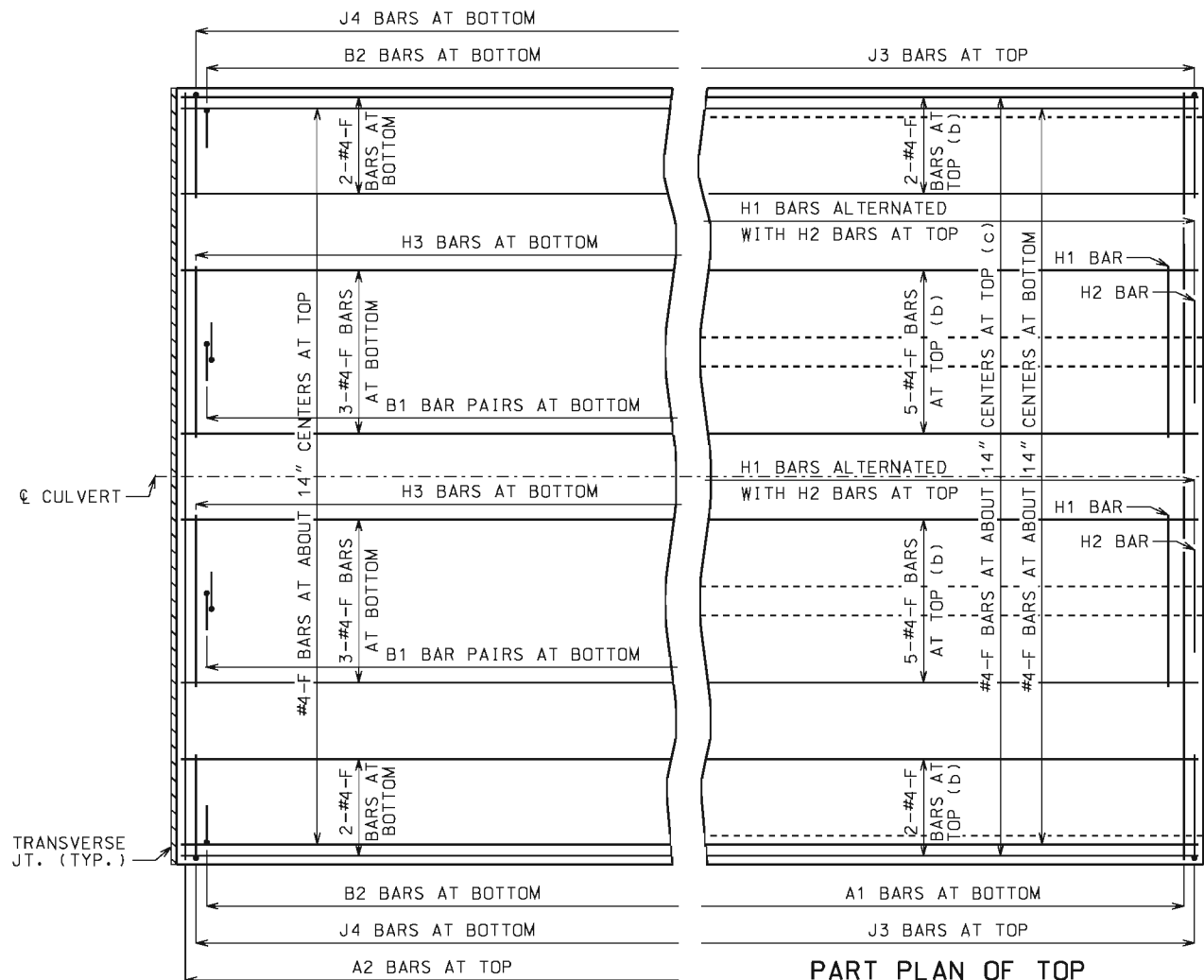
**GRANULAR BACKFILL LIMITS AND MEMBER DIMENSIONS**



**TRANSVERSE JOINT THRU BARREL**

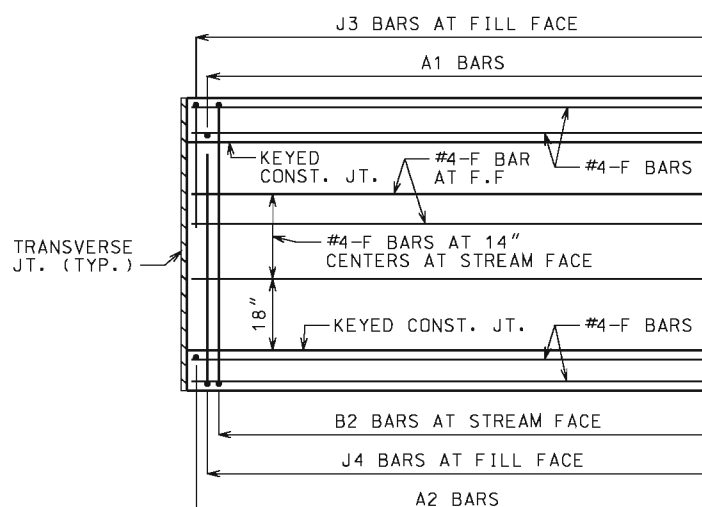
PREFORMED FIBER EXPANSION JOINT MATERIAL IN ACCORDANCE WITH SEC 1057 SHALL BE SECURELY STITCHED TO ONE FACE OF THE CONCRETE WITH 10 GAGE COPPER WIRE OR 12 GAGE SOFT DRAWN GALVANIZED STEEL WIRE.

FILTER CLOTH 3 FEET IN WIDTH AND DOUBLE THICKNESS SHALL BE CENTERED ON TRANSVERSE JOINTS IN TOP SLAB AND SIDEWALLS WITH EDGES SEALED WITH MASTIC OR TWO SIDED TAPE. FILTER CLOTH SHALL BE A SUBSURFACE DRAINAGE GEOTEXTILE IN ACCORDANCE WITH SEC 1011. COST OF FURNISHING AND INSTALLING FILTER CLOTH WILL BE CONSIDERED COMPLETELY COVERED BY THE CONTRACT UNIT PRICE FOR OTHER ITEMS.

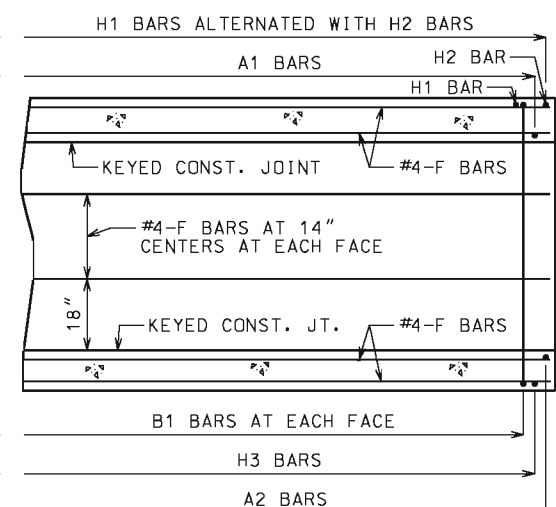


**PART PLAN OF BOTTOM SLAB REINFORCEMENT**

**PART PLAN OF TOP SLAB REINFORCEMENT**  
(b) FOR DESIGN FILLS OVER 2'-0"  
(c) FOR DESIGN FILLS 2'-0" OR LESS



**PART ELEVATION OF EXTERIOR WALL REINFORCEMENT**



**PART SECTION NEAR INTERIOR WALL REINFORCEMENT**

**GENERAL NOTES**

**DESIGN SPECIFICATIONS:**  
2010 AASHTO LRFD BRIDGE DESIGN SPECIFICATIONS AND 2010 INTERIM REVISIONS

**DESIGN LOADING:**  
VEHICULAR = HL-93 MINUS LANE LOAD, EARTH = 120 LB/CF  
EQUIVALENT FLUID PRESSURE = 30 LB/CF (MIN.), 60 LB/CF (MAX.)

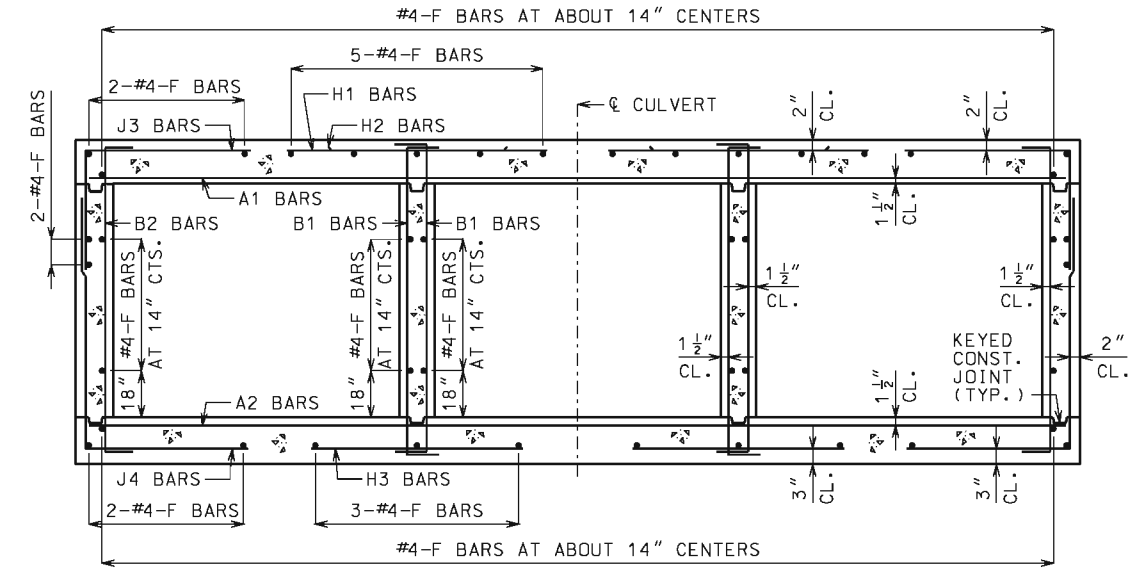
**DESIGN UNIT STRESSES:**  
CLASS B-1 CONCRETE (BOX CULVERT)  $f'_c = 4,000$  PSI  
REINFORCING STEEL (GRADE 60)  $f_y = 60,000$  PSI

**MISCELLANEOUS:**  
FOR MEMBER THICKNESS AND FOR BAR SIZES, SPACING AND DIMENSIONS, SEE 703.87.

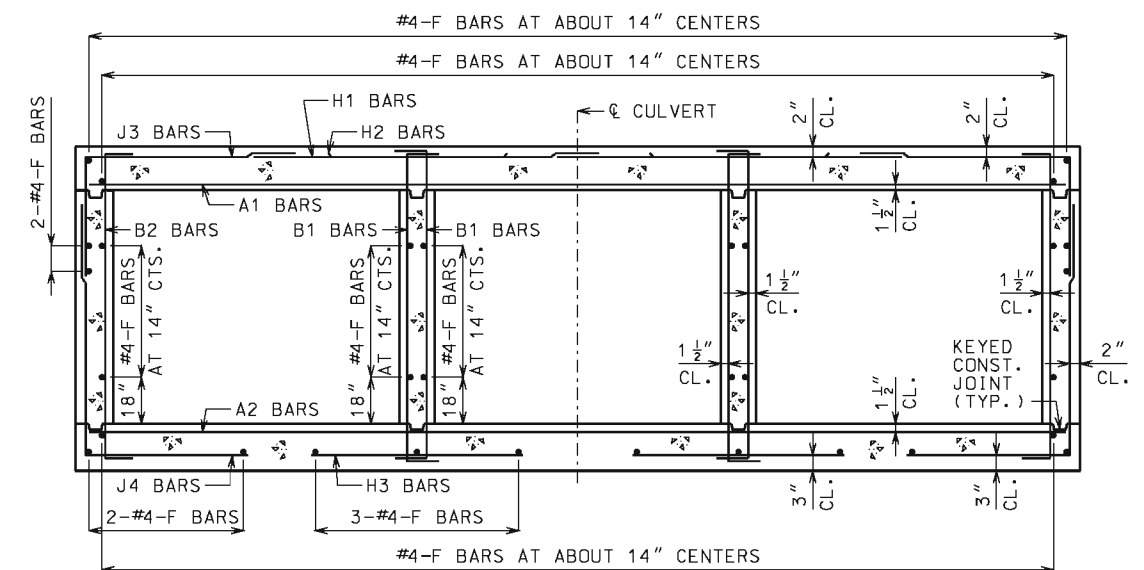
CONSTRUCTION JOINT KEY NOT SHOWN FOR CLARITY IN PART PLANS, PART ELEVATION AND PART SECTION.

DRAWING NOT TO SCALE. FOLLOW DIMENSIONS.

MINIMUM CLEARANCE TO REINFORCING STEEL SHALL BE 1 1/2".



**BARREL REINFORCEMENT**  
FOR DESIGN FILLS OVER 2'-0"  
SYMMETRICAL ABOUT AND NORMAL TO CULVERT.



**BARREL REINFORCEMENT**  
FOR DESIGN FILLS 2'-0" OR LESS  
SYMMETRICAL ABOUT AND NORMAL TO CULVERT.

	<b>MISSOURI HIGHWAYS AND TRANSPORTATION COMMISSION</b>	
	105 WEST CAPITOL JEFFERSON CITY, MO 65102 1-888-ASK-MODOT (1-888-275-6636)	
	<b>CONCRETE TRIPLE BOX CULVERT</b>	
	<b>CUT SECTION</b>	
DATE EFFECTIVE: 12/01/2011 DATE PREPARED: 5/13/2015	<b>703.86</b>	SHEET NO. 1 OF 1

IF A SEAL IS PRESENT ON THIS SHEET IT HAS BEEN ELECTRONICALLY SEALED AND DATED.