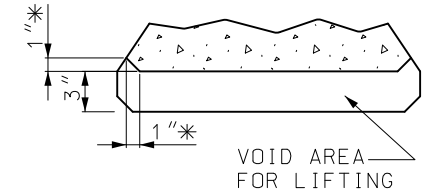
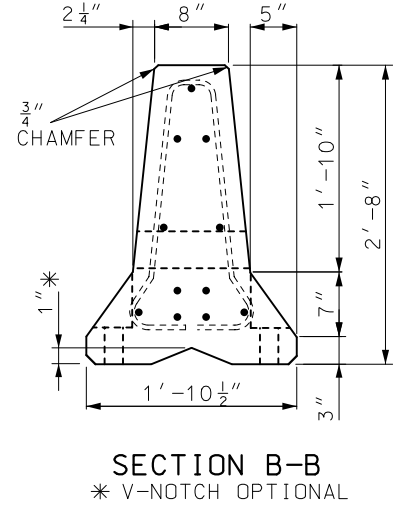


ELEVATION VIEW

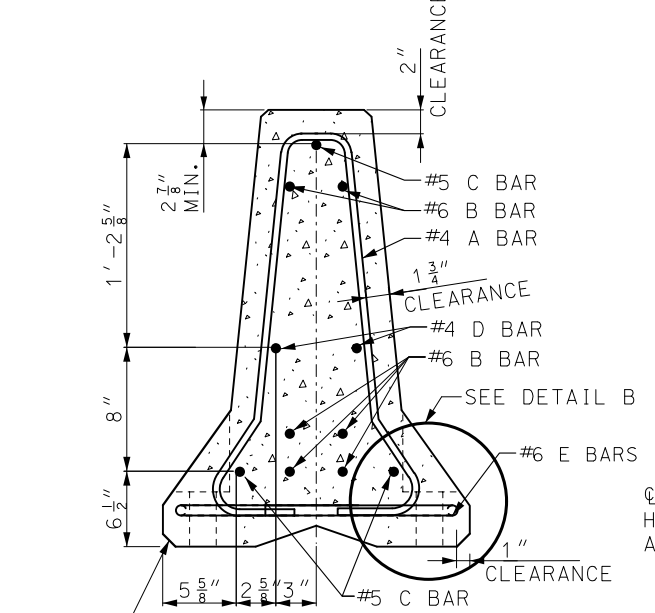
(1) 4 INCH DIAMETER - 11 GAUGE STEEL ROUND MECHANICAL TUBING SLEEVE. THESE HOLES ARE OPTIONAL.



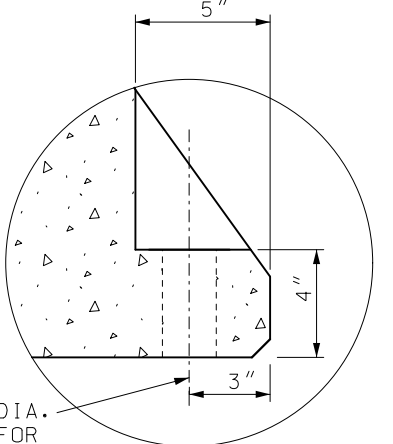
PART SECTION C-C LIFTING SLOT DETAIL
* RADIUS EDGER TO PREVENT SPALLING



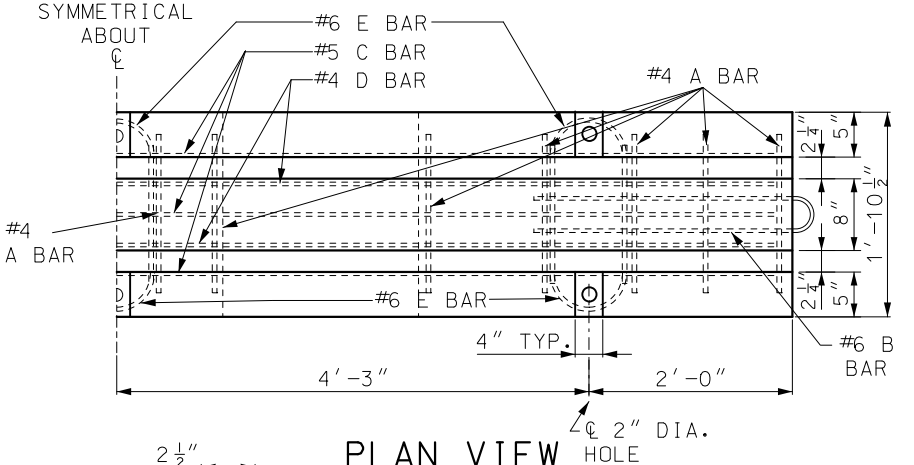
SECTION B-B
* V-NOTCH OPTIONAL



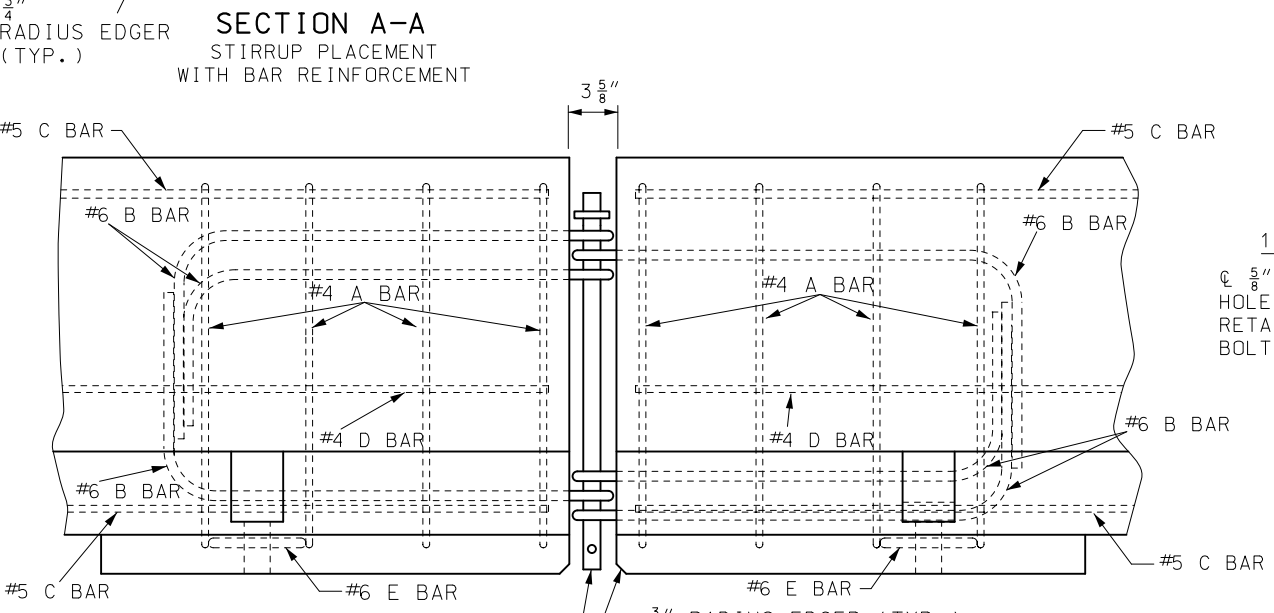
SECTION A-A STIRRUP PLACEMENT WITH BAR REINFORCEMENT



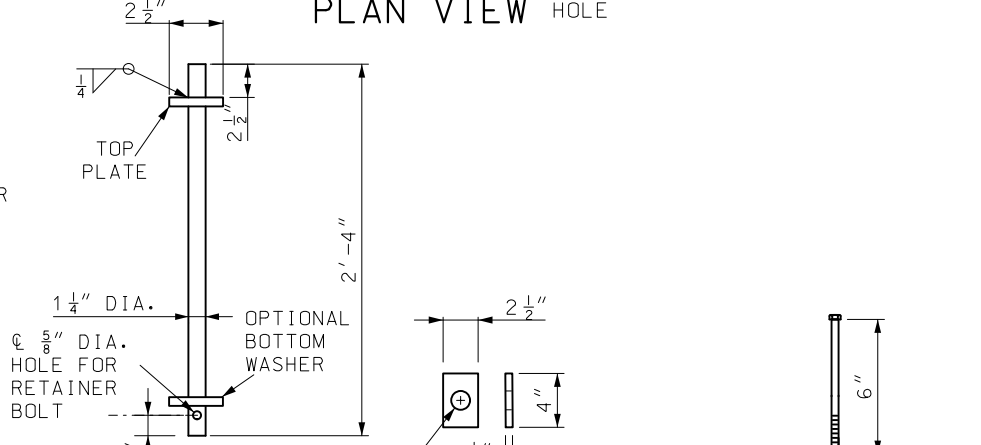
DETAIL B



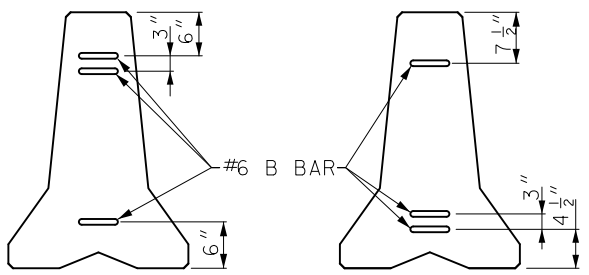
PLAN VIEW



SEE DETAIL A DETAILS OF BARRIER CONNECTION



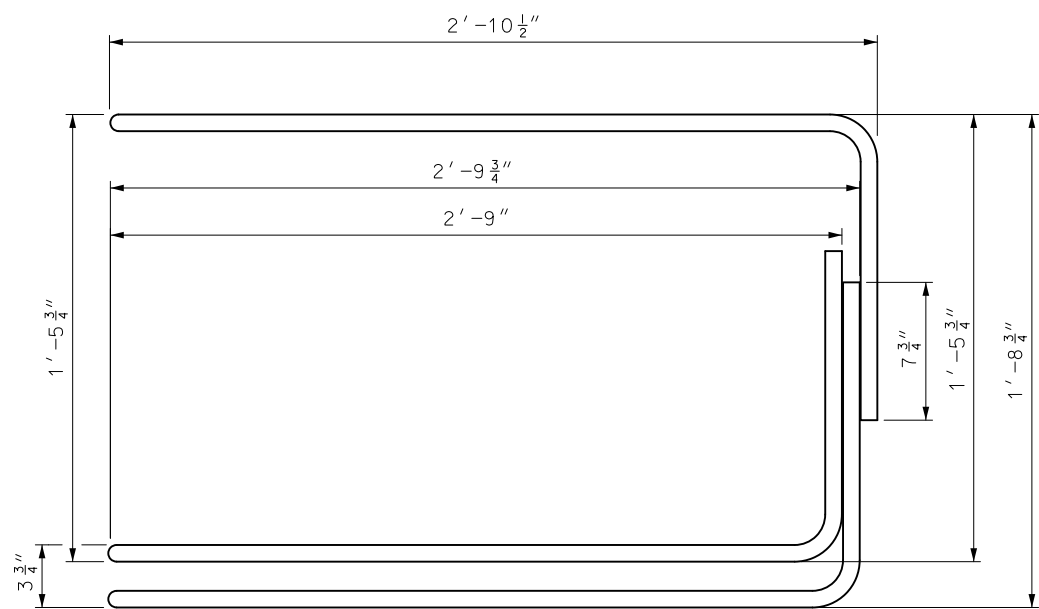
CONNECTION ROD ASSEMBLY
NOTE: RETAINER BOLT AND BOTTOM WASHER AT CONTRACTOR'S OPTION.



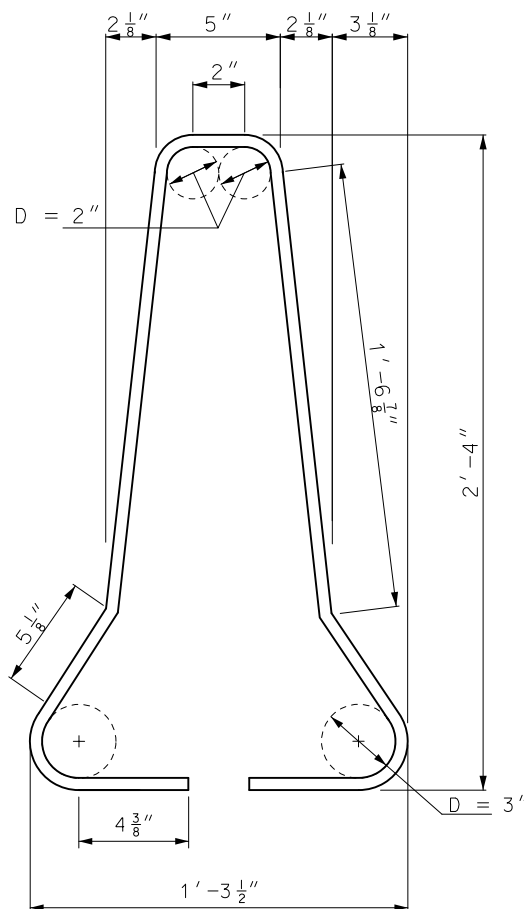
ALTERNATING END VIEWS FOR BARRIER LOOP CONNECTION

GENERAL NOTES:
ALL REINFORCING SHALL MEET REQUIREMENTS OF CRSI EXCEPT WHERE SHOWN ON PLANS.
REINFORCING STEEL CLEARANCE TO EDGE OF CONCRETE SHALL BE 1 3/4" UNLESS OTHERWISE SHOWN.
AT NO TIME SHALL THE BARRIERS BE LIFTED OR MOVED BY USE OF THE LOOP BARS.
THE SECTION FURNISHED SHALL COMPLY WITH DIMENSIONS SHOWN, AS APPROVED BY THE ENGINEER.
SEE SHEET 2 FOR DELINEATOR DETAILS.

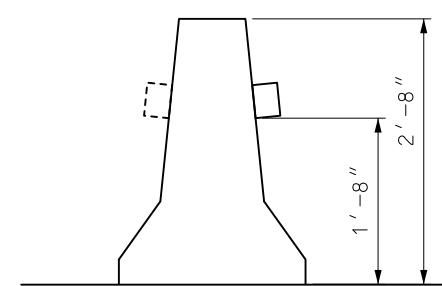
		MISSOURI HIGHWAYS AND TRANSPORTATION COMMISSION 105 WEST CAPITOL JEFFERSON CITY, MO 65102 1-888-ASK-MODOT (1-888-275-6636)	
		TEMPORARY CONCRETE TRAFFIC BARRIER TYPE F	
DATE EFFECTIVE:	4/1/2026	617.20G	SHEET NO.
DATE PREPARED:	12/22/2025		1 OF 8



#6 B BAR ELEVATION

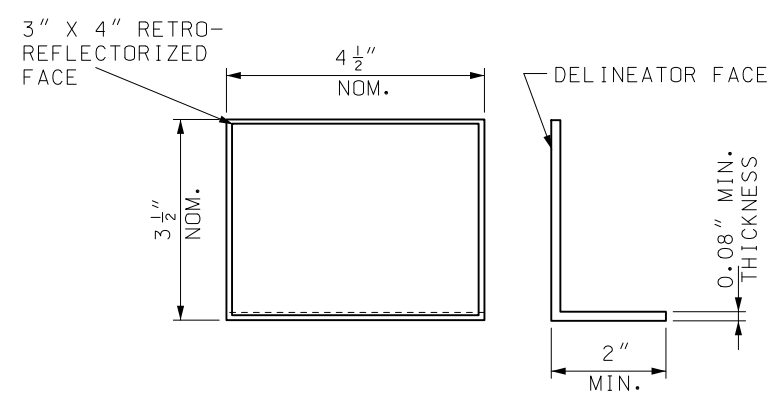


#4 A BARS

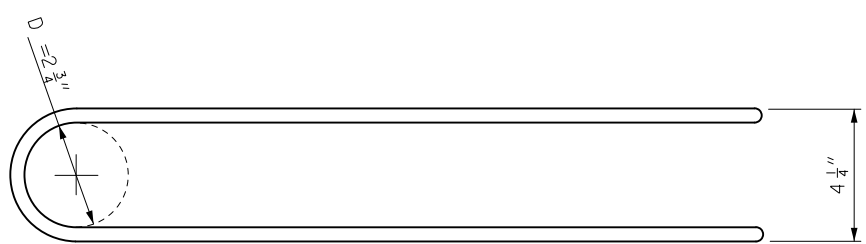


TRAFFIC BARRIER DELINEATORS

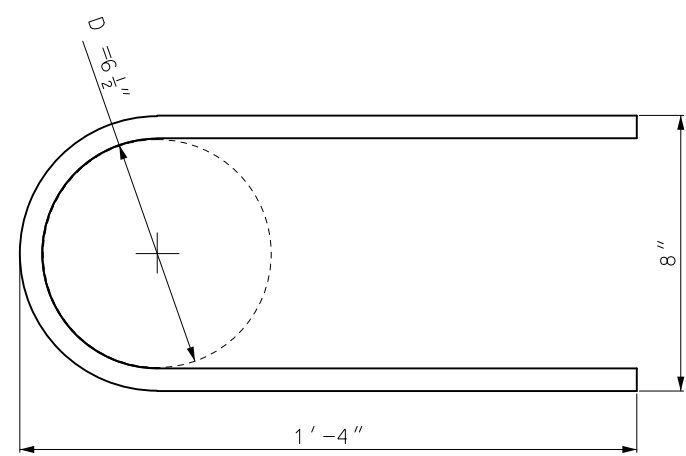
REFLECTIVE SHEETING APPLIED TO TRAFFIC BARRIER DELINEATORS SHALL BE IN ACCORDANCE WITH SEC 1042.2.7.5.



DEL INEATOR



#6 B BAR PLAN



#6 E BAR

REINFORCING BARS					
PER 12'-6" BARRIER SECTION					
MARK	BAR SIZE	NO. OF BARS	SHAPE OF EACH	LENGTH EACH (NOM.)	WEIGHT
A	4	14		6'-5"	60.8 lbs
C	5	3		12'-2"	38.1 lbs
D	4	2		12'-2"	16.3 lbs
E	6	6		2'-11"	26.3 lbs
LOOP ASSEMBLY					
B	6	6		7'-10"	70.5 lbs

CONCRETE VOLUME 1.3 CU YDS APPROXIMATE WEIGHT 5601 LBS.

GENERAL NOTE:
BAR DIMENSIONS ARE OUT TO OUT UNLESS OTHERWISE NOTED.

MISSOURI HIGHWAYS AND TRANSPORTATION COMMISSION

105 WEST CAPITOL
JEFFERSON CITY, MO 65102
1-888-ASK-MODOT (1-888-275-6636)

TEMPORARY CONCRETE TRAFFIC BARRIER

TYPE F

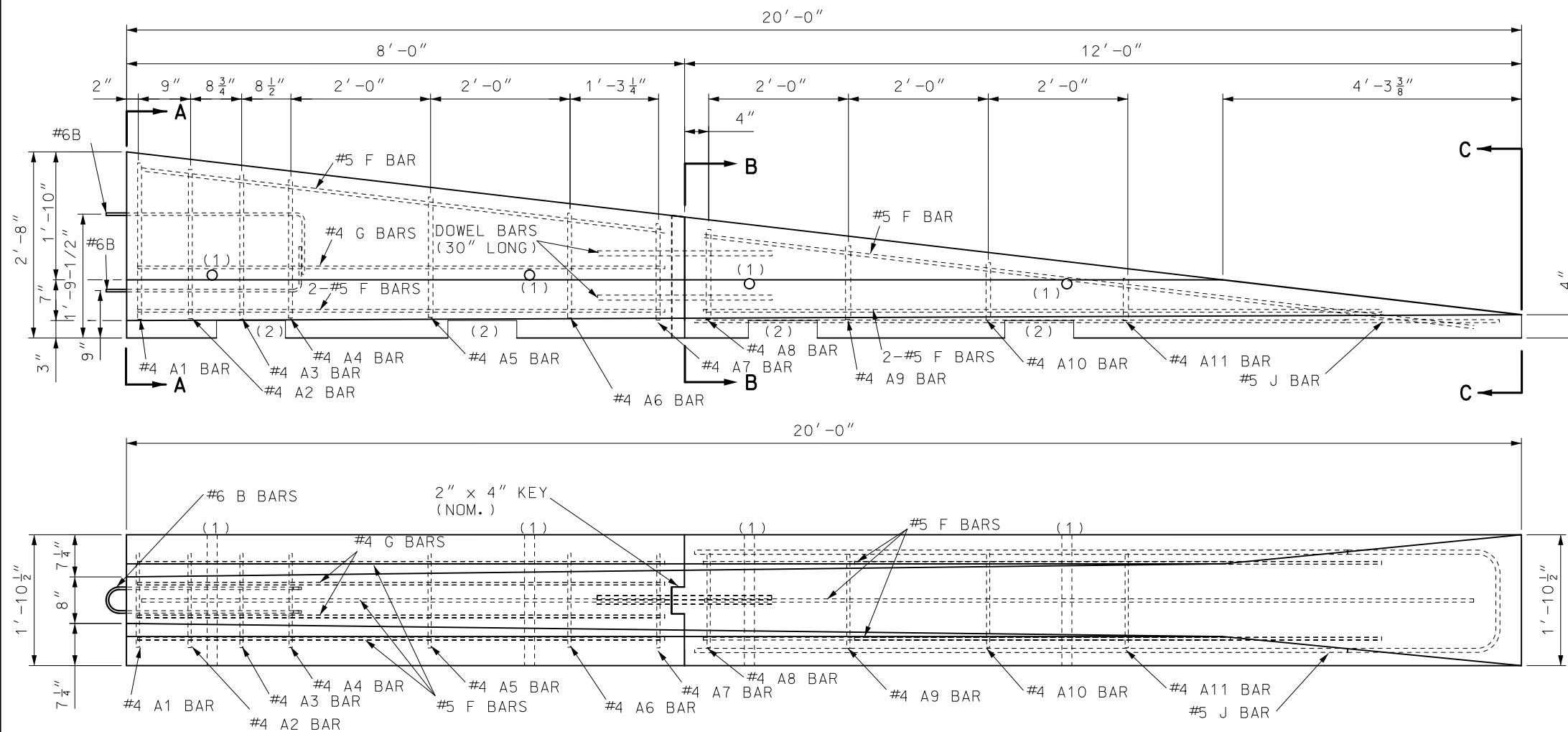
Sarah Kleinschmit
SARAH K. KLEINSCHMIT - CIVIL
MO-PE-2007002808

DATE EFFECTIVE: 4/1/2026

DATE PREPARED: 12/22/2025

617.20G

SHEET NO.
2 OF 8



PRECAST BARRIER HEIGHT TRANSITION
(TEMPORARY INSTALLATIONS ONLY)

- (1) OPTIONAL 4 INCH DIAMETER, 11 GAUGE STEEL ROUND MECHANICAL TUBING SLEEVE FOR LIFT HOLE ALLOWED. THE LOCATION OF THE HOLE MAY VARY TO ACCOMMODATE THE DIFFERING WEIGHT DISTRIBUTIONS OF TRANSITION SECTIONS.
- (2) 3" X 1'-0" SLOTS FOR LIFTING - TWO PER SECTION. LOCATION TO BE DETERMINED BY CONTRACTOR.

GENERAL NOTES:

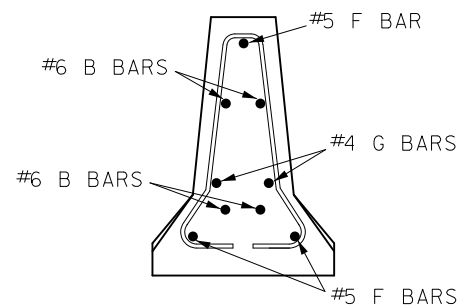
REINFORCING STEEL CLEARANCE TO EDGE OF CONCRETE SHALL BE 1 3/4" UNLESS OTHERWISE SHOWN.

HEIGHT TRANSITIONS SHALL NOT BE USED ON INTERSTATE ROUTES OR IN LOCATIONS WHERE THE POSTED SPEED PRIOR TO CONSTRUCTION IS GREATER THAN 35 MPH.

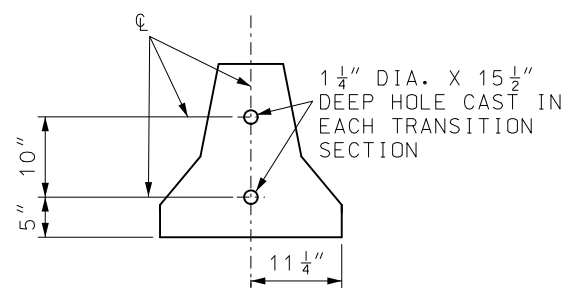
AT NO TIME SHALL THE BARRIERS BE LIFTED OR MOVED BY USE OF THE LOOP BARS.

RETAINER BOLT AND NUT MUST BE USED WITH TRANSITION BARRIER.

AT THE OPTION OF THE CONTRACTOR, HEIGHT TRANSITIONS MAY BE MANUFACTURED IN ONE SECTION. THE PLANS FOR REINFORCEMENT ACROSS JOINT SHALL BE APPROVED BY THE ENGINEER PRIOR TO MANUFACTURE.

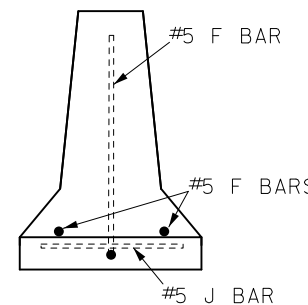


SECTION A-A



SECTION B-B

NOTE: SECTIONS TO BE CONNECTED WITH TWO- 1" DIA. BARS OR #8 REINFORCING BARS 30" LONG IN 1 1/4" DIA. HOLES AS SHOWN.



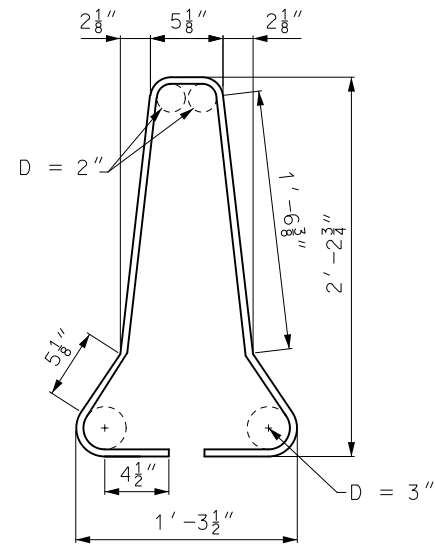
SECTION C-C

MISSOURI HIGHWAYS AND TRANSPORTATION COMMISSION
105 WEST CAPITOL
JEFFERSON CITY, MO 65102
1-888-ASK-MODOT (1-888-275-6636)

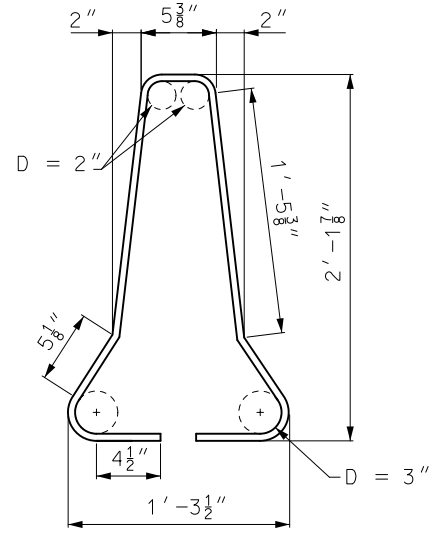
STATE OF MISSOURI
SARAH K. KLEINSCHMIT
NUMBER PE-2007002908
PROFESSIONAL ENGINEER
Sarah Kleinschmit
12/23/2025 12:13:30 PM
SARAH K. KLEINSCHMIT - CIVIL
MO-PE-2007002908

TEMPORARY CONCRETE TRAFFIC BARRIER
TYPE F HEIGHT TRANSITIONS

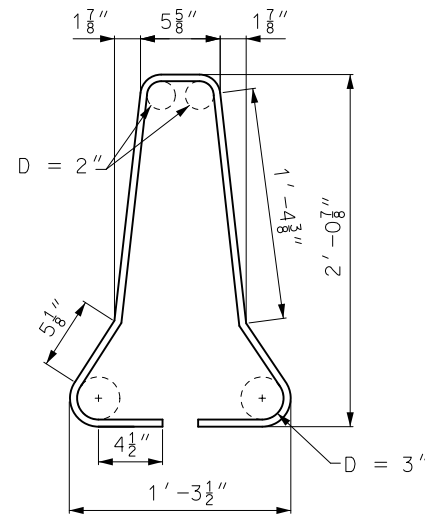
DATE EFFECTIVE: 4/1/2026	617.20G	SHEET NO. 3 OF 8
DATE PREPARED: 12/22/2025		



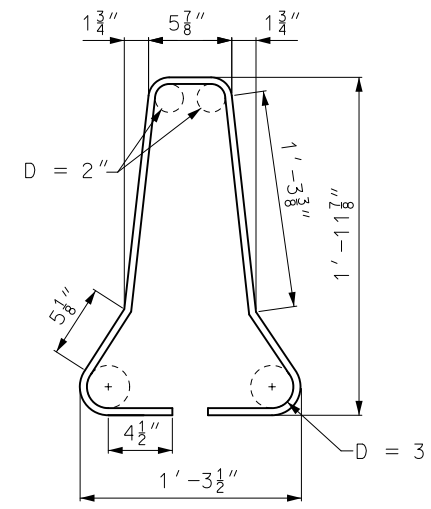
#4 A1 BAR



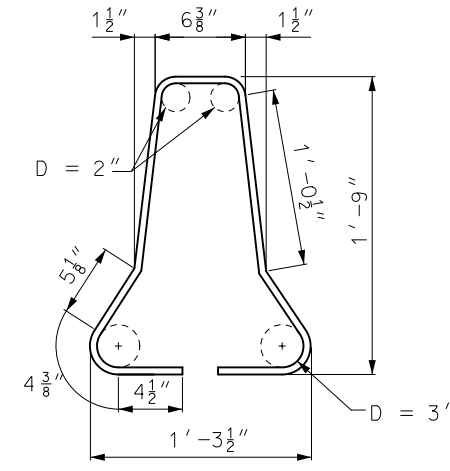
#4 A2 BAR



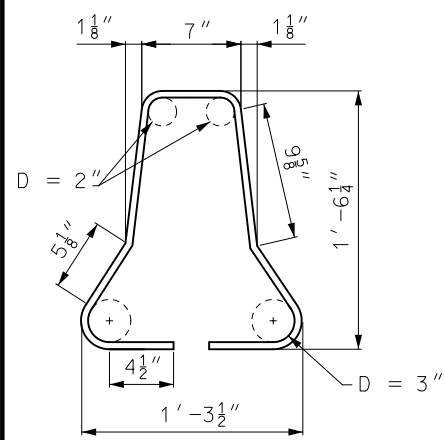
#4 A3 BAR



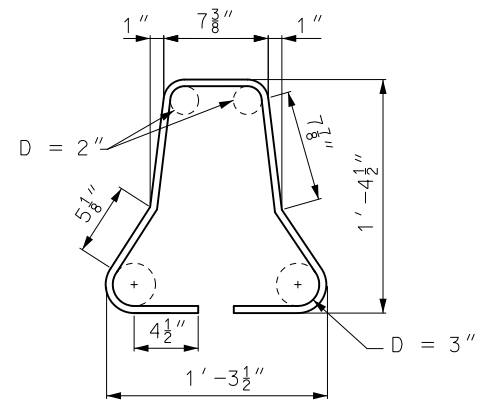
#4 A4 BAR



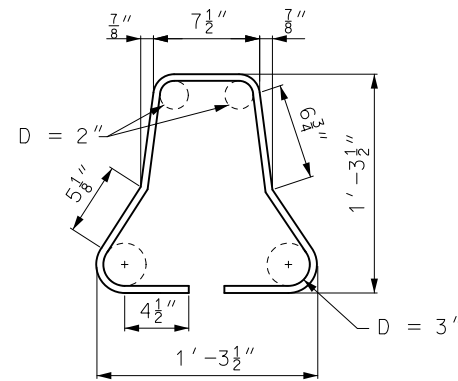
#4 A5 BAR



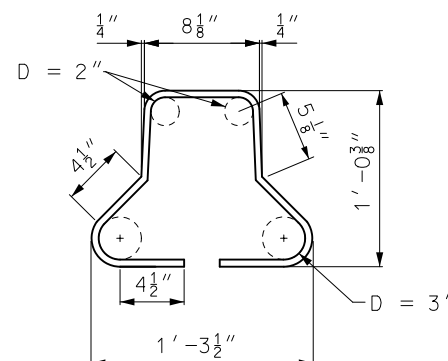
#4 A6 BAR



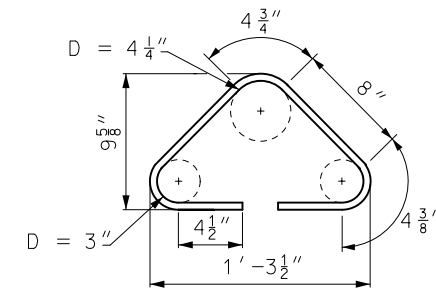
#4 A7 BAR



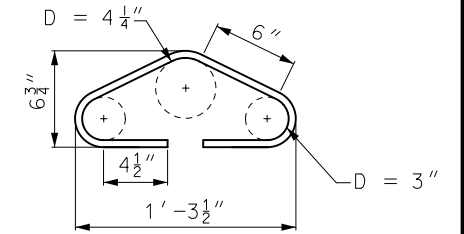
#4 A8 BAR



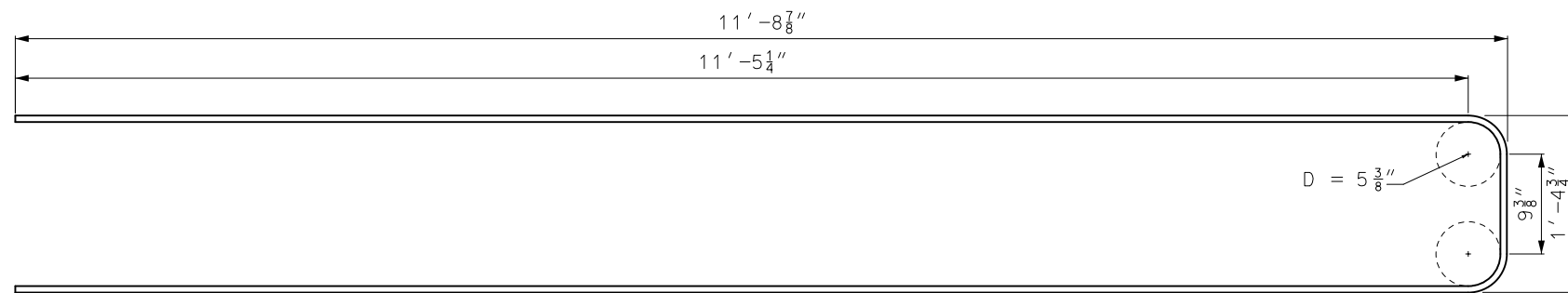
#4 A9 BAR



#4 A10 BAR



#4 A11 BAR



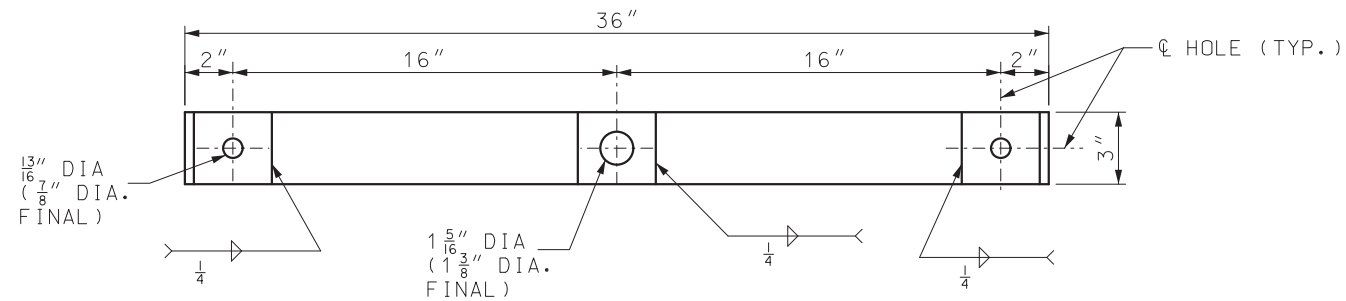
#5 J BAR

NOTE: FOR DETAILS OF B BARS, SEE SHEET 2.

GENERAL NOTES:

BAR DIMENSIONS ARE OUT TO OUT UNLESS OTHERWISE NOTED.

	MISSOURI HIGHWAYS AND TRANSPORTATION COMMISSION 105 WEST CAPITOL JEFFERSON CITY, MO 65102 1-888-ASK-MODOT (1-888-275-6636)	
	TEMPORARY CONCRETE TRAFFIC BARRIER TYPE F HEIGHT TRANSITIONS	
	DATE EFFECTIVE: 4/1/2026 DATE PREPARED: 12/22/2025	617.20G SHEET NO. 4 OF 8



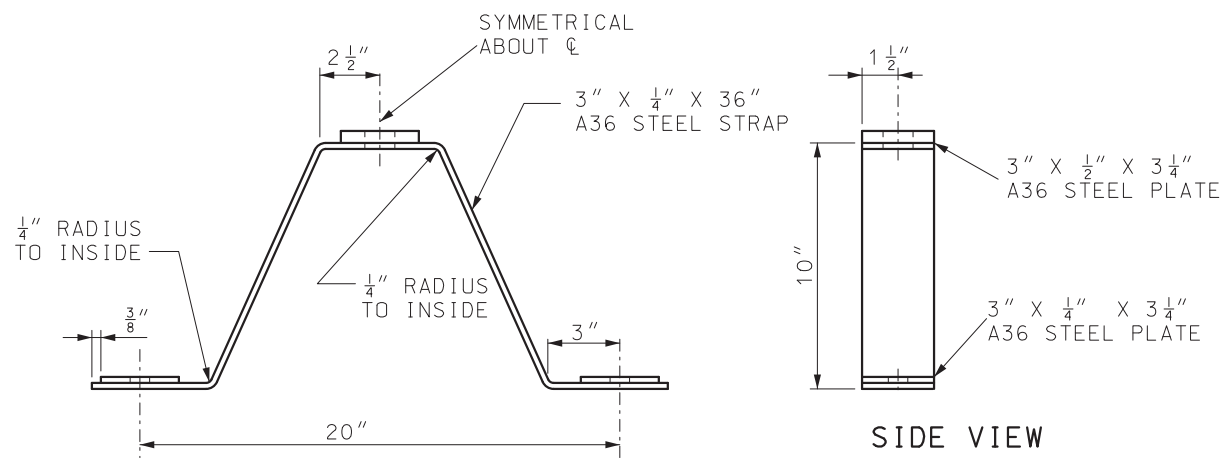
PLAN OF TIE-DOWN STRAP

(1) TIE-DOWN STRAP ANCHOR SHALL BE ONE OF THE FOLLOWING:

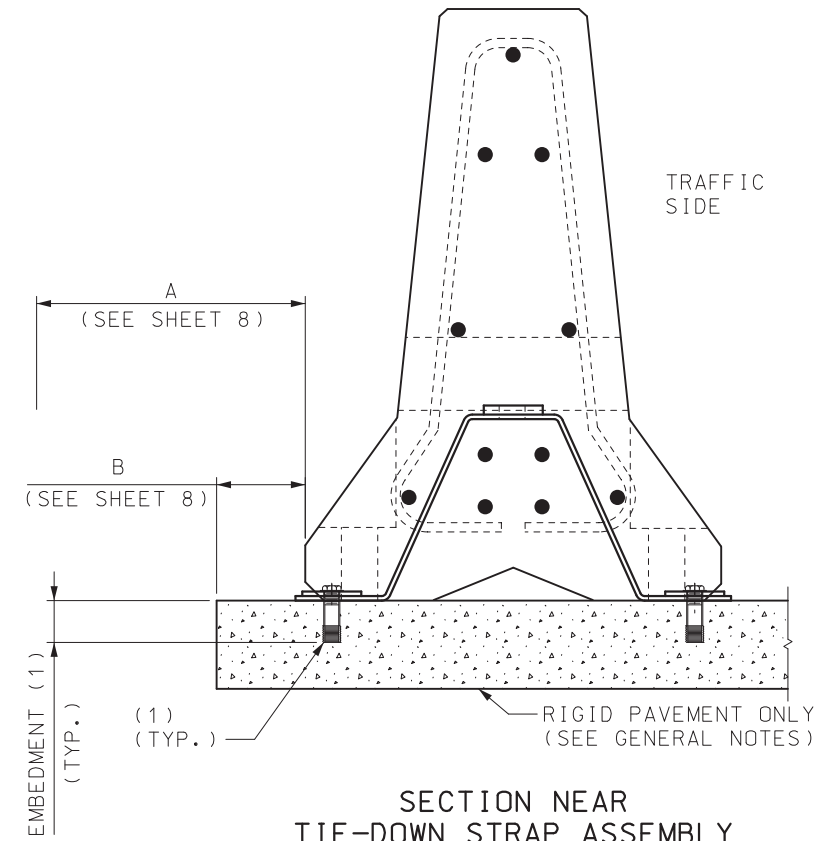
3/4" DROP IN ANCHOR WITH A 3 1/4" EMBEDMENT AND 3/4" DIA. X 1 3/4" LONG GRADE 5 BOLT.

RED HEAD LARGE DIAMETER TAPCON (LDT) 3/4" X 4 1/2" LONG WITH A 4" EMBEDMENT.

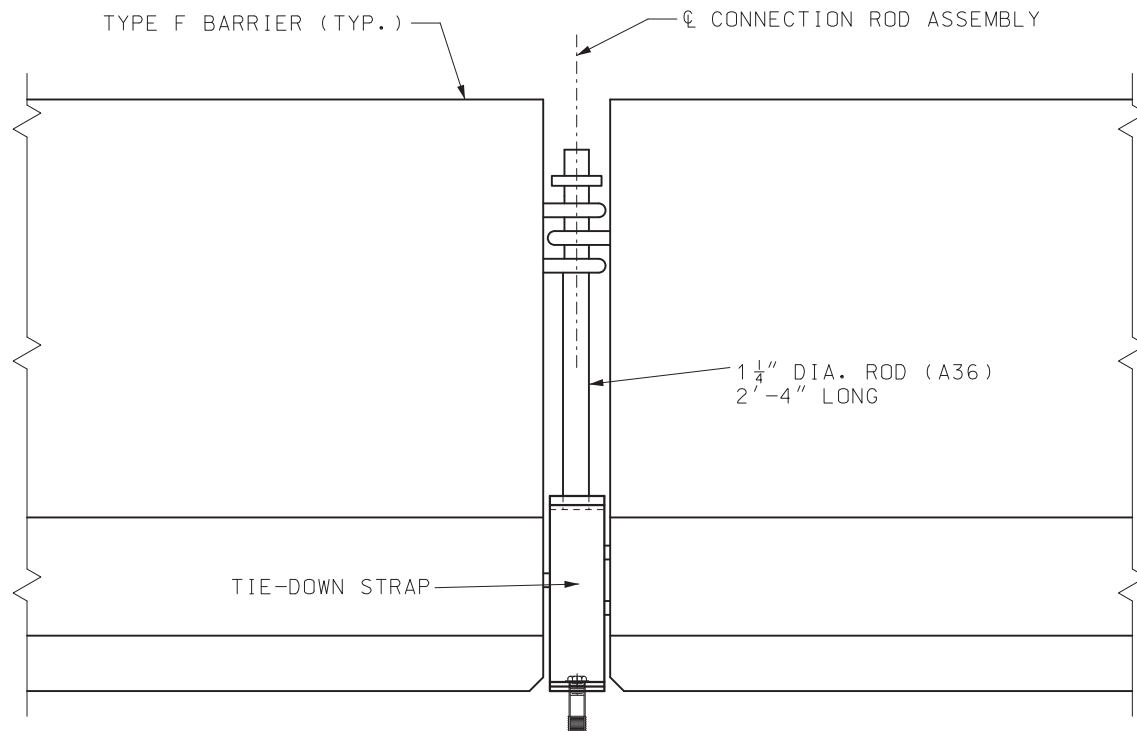
SIMPSON TITEN HD 3/4" DIA. X 5" LONG WITH A 4 1/2" EMBEDMENT.



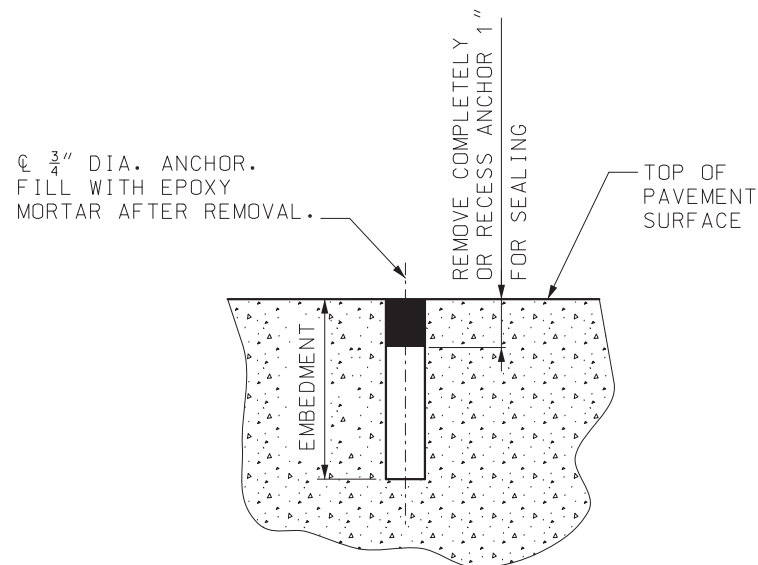
DETAILS OF TYPE F TEMPORARY BARRIER TIE-DOWN STRAP



SECTION NEAR TIE-DOWN STRAP ASSEMBLY



PART ELEVATION OF BARRIER

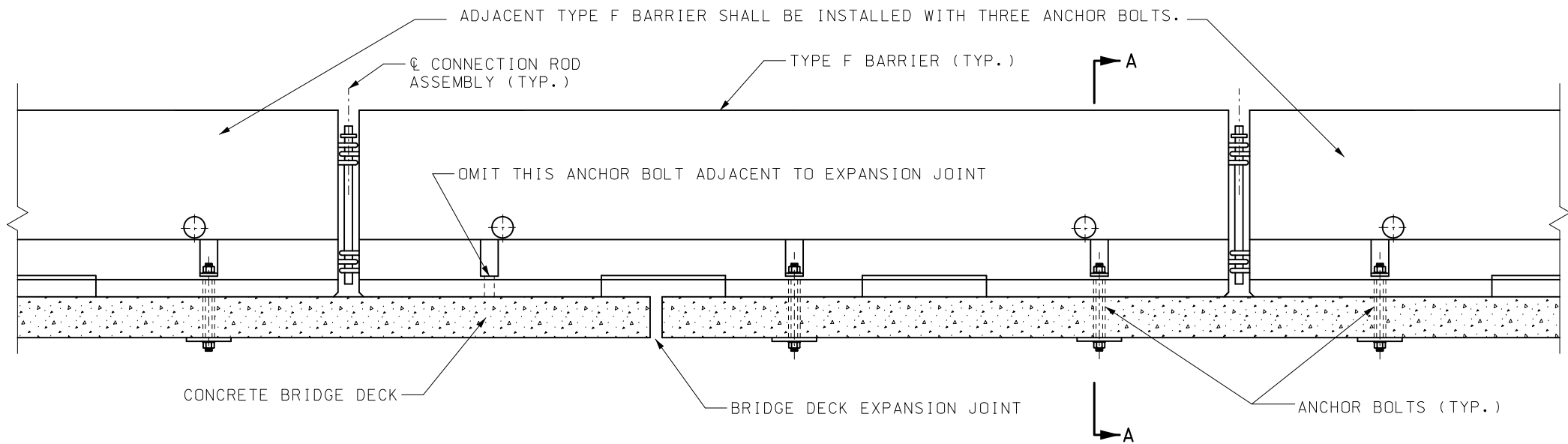


DETAIL SHOWING SEALING OF HOLES AFTER REMOVAL OF TIE-DOWN BOLTS

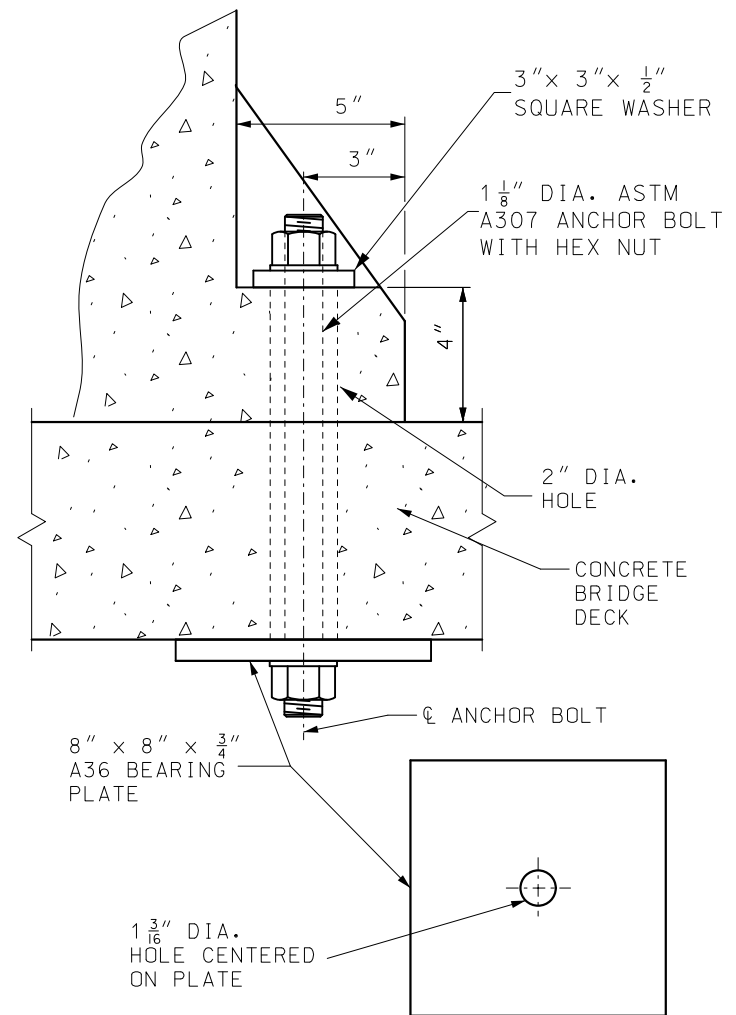
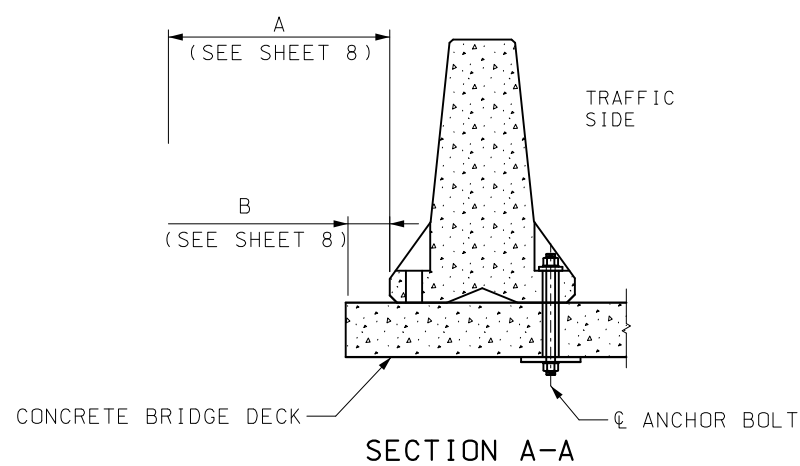
GENERAL NOTES:

- TIE-DOWN STRAP SYSTEMS ARE ONLY APPLICABLE ON RIGID PAVEMENTS.
- CONTRACTOR SHALL VERIFY ALL DIMENSIONS IN FIELD BEFORE ORDERING NEW MATERIAL.
- SEE OTHER SHEETS FOR DETAILS NOT SHOWN.

<p>MISSOURI HIGHWAYS AND TRANSPORTATION COMMISSION</p> <p>105 WEST CAPITOL JEFFERSON CITY, MO 65102 1-888-ASK-MODOT (1-888-275-6636)</p>	
<p><i>Sarah Kleinschmit</i> SARAH K. KLEINSCHMIT - CIVIL MO-PE-2007002808</p>	<p>TEMPORARY CONCRETE TRAFFIC BARRIER</p> <p>ANCHORED (TIE-DOWN STRAP SYSTEM)</p>
<p>DATE EFFECTIVE: 7/1/2026 DATE PREPARED: 4/7/2026</p>	<p>617.20G</p>
<p>SHEET NO. 5 OF 8</p>	



BOLT THROUGH DECK AT THERMAL EXPANSION JOINTS



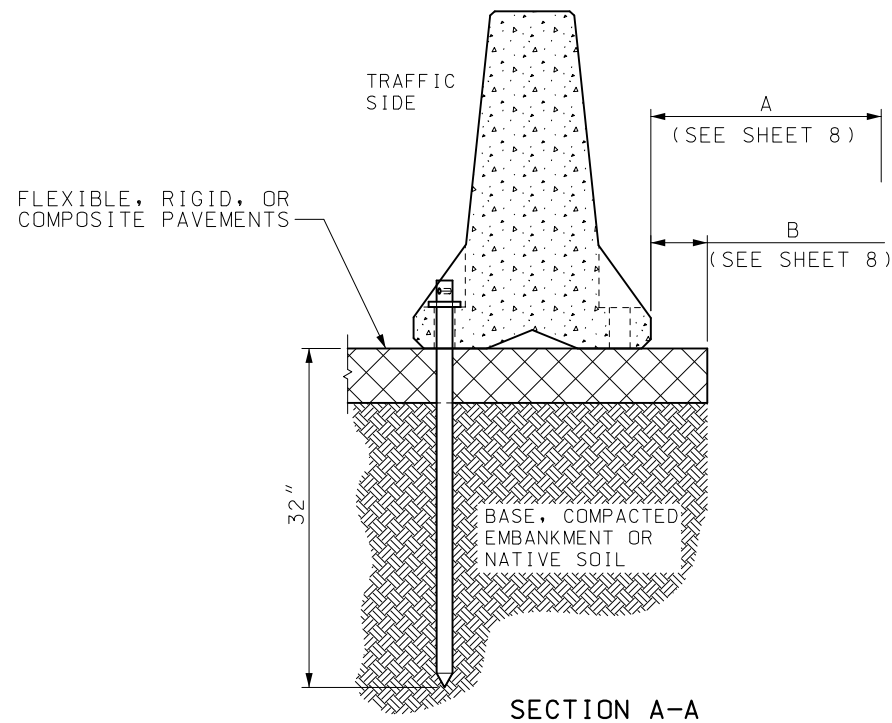
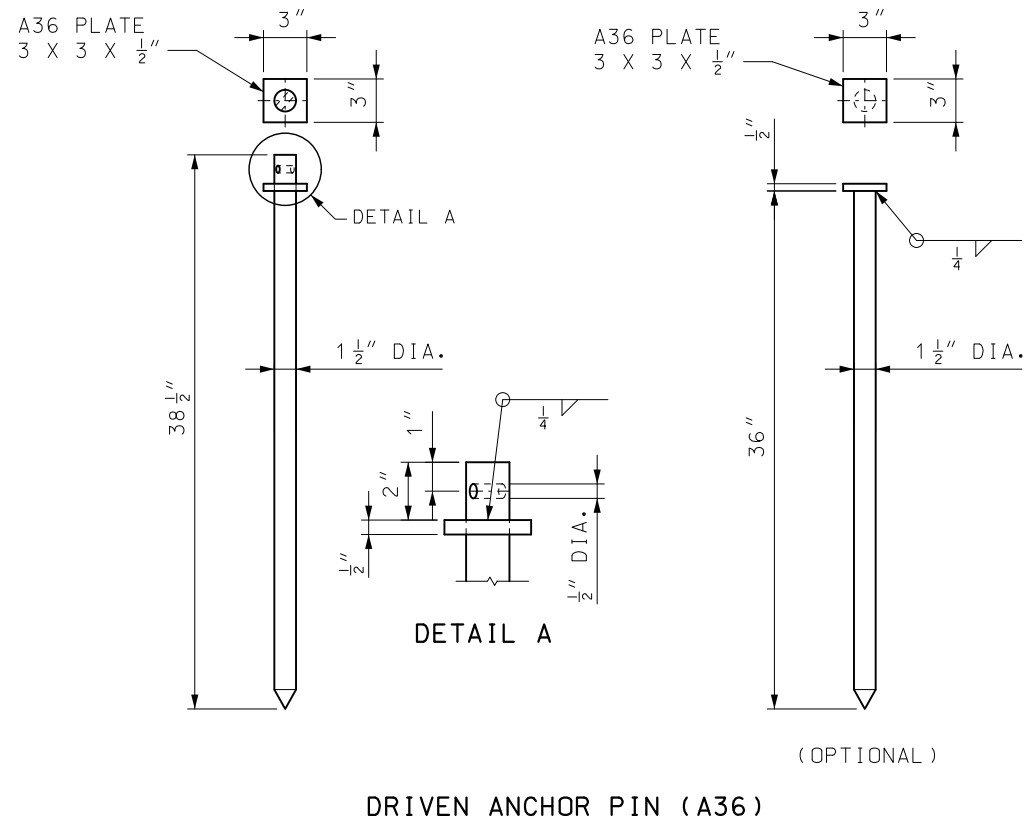
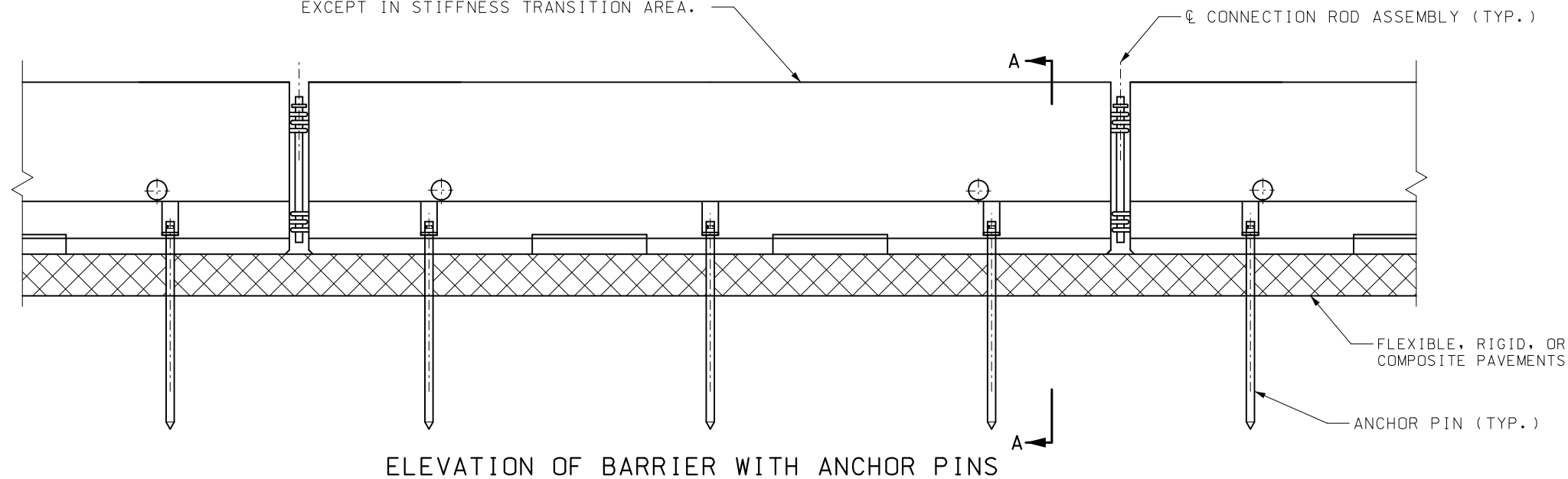
BOLT THROUGH DECK DETAIL

GENERAL NOTES:

- ANCHOR BOLT SYSTEMS ARE ONLY APPLICABLE ON BRIDGE DECKS AND RIGID PAVEMENTS.
- CONTRACTOR SHALL VERIFY ALL DIMENSIONS IN FIELD BEFORE ORDERING NEW MATERIAL.
- SEE OTHER SHEETS FOR DETAILS NOT SHOWN.
- AFTER REMOVAL OF ANCHOR BOLTS HOLES SHALL BE FILLED WITH QUALIFIED SPECIAL MORTAR IN ACCORDANCE WITH SEC 704 OR AN EPOXY BONDING AGENT IN ACCORDANCE WITH SEC 1039.

	MISSOURI HIGHWAYS AND TRANSPORTATION COMMISSION	
	105 WEST CAPITOL JEFFERSON CITY, MO 65102 1-888-ASK-MODOT (1-888-275-6636)	
	TEMPORARY CONCRETE TRAFFIC BARRIER ANCHORED (BOLT SYSTEM)	
	DATE EFFECTIVE: 4/1/2026 DATE PREPARED: 12/22/2025	617.20G

TYPE F BARRIER SHALL BE INSTALLED WITH THREE DRIVEN ANCHOR PINS (TYP.), EXCEPT IN STIFFNESS TRANSITION AREA.



GENERAL NOTES:

CONTRACTOR SHALL VERIFY ALL DIMENSIONS IN FIELD BEFORE ORDERING NEW MATERIAL.

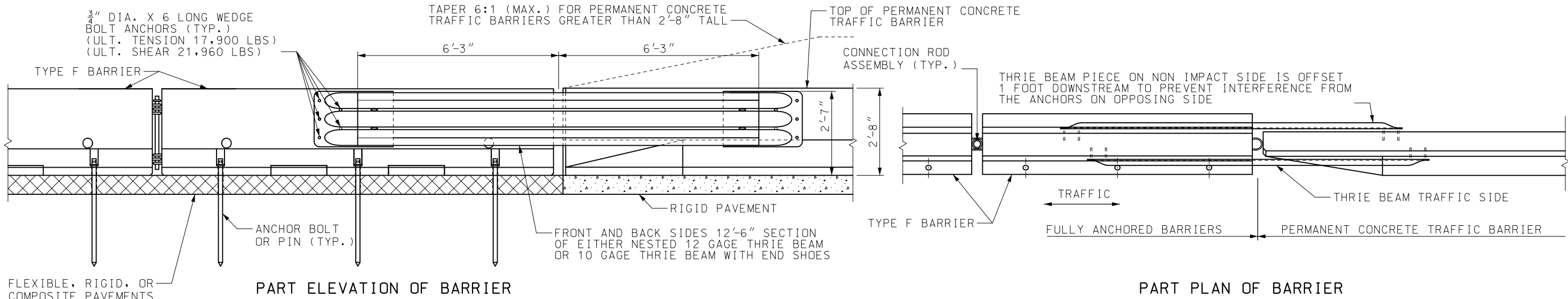
WHERE EXISTING FLEXIBLE PAVEMENT OR RIGID PAVEMENT IS NOT PRESENT A 2" THICK X 30" WIDE MINIMUM ASPHALT PAD SHALL BE CONSTRUCTED.

COST OF FURNISHING AND INSTALLING THE ASPHALT PAD COMPLETE-IN-PLACE WILL BE CONSIDERED INCIDENTAL TO OTHER PAY ITEMS.

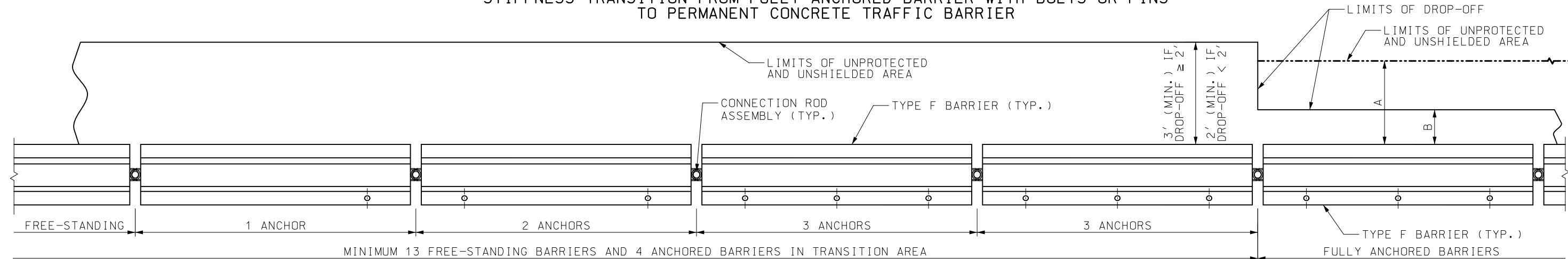
SEE OTHER SHEETS FOR DETAILS NOT SHOWN.

AFTER REMOVAL OF ANCHOR PINS HOLES SHALL BE FILLED WITH QUALIFIED SPECIAL MORTAR IN ACCORDANCE WITH SEC 704.

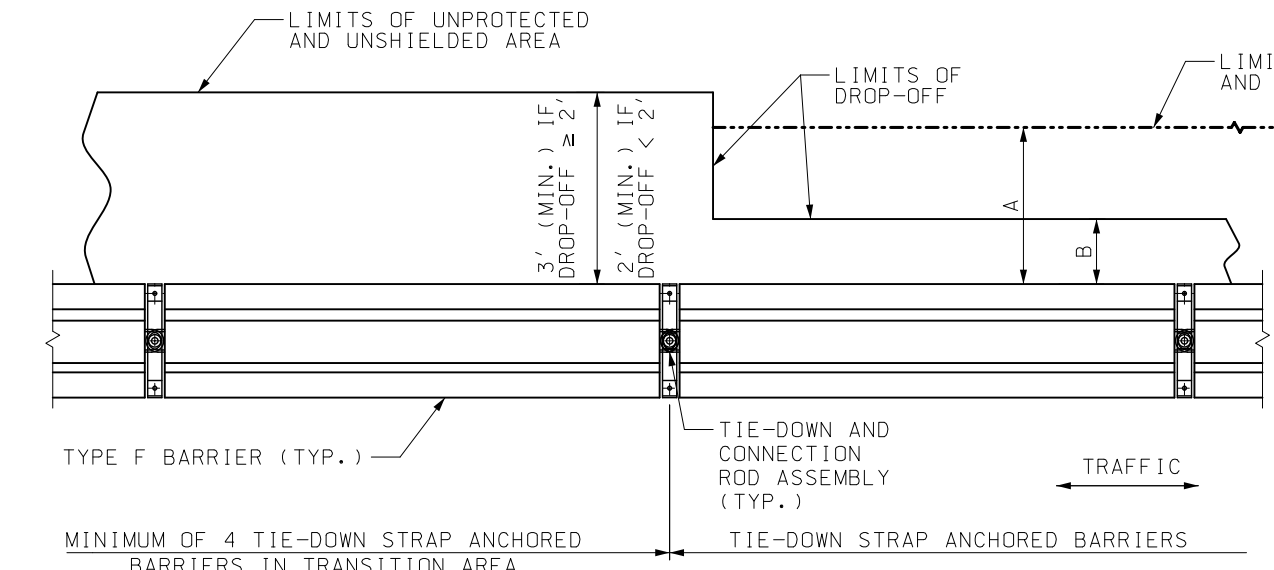
	MISSOURI HIGHWAYS AND TRANSPORTATION COMMISSION	
	105 WEST CAPITOL JEFFERSON CITY, MO 65102 1-888-ASK-MODOT (1-888-275-6636)	
	TEMPORARY CONCRETE TRAFFIC BARRIER ANCHORED (PIN SYSTEM)	
	DATE EFFECTIVE: 4/1/2026 DATE PREPARED: 12/22/2025	617.20G



STIFFNESS TRANSITION FROM FULLY ANCHORED BARRIER WITH BOLTS OR PINS TO PERMANENT CONCRETE TRAFFIC BARRIER



PLAN OF STIFFNESS TRANSITION FROM FREE-STANDING BARRIERS TO FULLY ANCHORED BARRIER WITH BOLTS OR PINS



STIFFNESS TRANSITION FOR BARRIER ANCHORED WITH TIE-DOWN STRAPS
(13 FREE-STANDING BARRIERS NOT REQUIRED)

LIMITS OF UNPROTECTED AND UNSHIELDED AREA	
$6'' \leq A < 2'$	ANCHOR EACH BARRIER WITH 3 ANCHOR BOLTS OR PINS
$2' \leq A < 3'$	ANCHOR WITH BOLTS, PINS, OR TIE-DOWN STRAPS
$A \geq 3'$	NO ANCHORAGE REQUIRED UNLESS SHOWN ON PLANS

EDGE OF DROP-OFF	
$1'' \leq B < 6''$	ANCHOR EACH BARRIER WITH 3 ANCHOR BOLTS OR PINS
$6'' \leq B < 2'$	ANCHOR WITH BOLTS, PINS, OR TIE-DOWN STRAPS
$B \geq 2'$ IF DROP-OFF $< 2'$, $3'$ IF DROP-OFF $\geq 2'$	NO ANCHORAGE REQUIRED UNLESS SHOWN ON PLANS

NOTE: TEMPORARY CONCRETE TRAFFIC BARRIER MUST MEET BOTH A & B DIMENSIONS, UNLESS OTHERWISE SHOWN ON PLANS.

GENERAL NOTES:
CONTRACTOR SHALL VERIFY ALL DIMENSIONS IN FIELD BEFORE ORDERING NEW MATERIAL.

COST OF FURNISHING AND INSTALLING THE ANCHOR BOLT SYSTEM, ANCHOR PINS SYSTEM, TIE-DOWN STRAP SYSTEM AND THRIE BEAM COMPLETE-IN-PLACE WILL BE CONSIDERED INCIDENTAL TO OTHER PAY ITEMS.

ALL TYPE F BARRIERS SHALL BE CONNECTED TO ADJACENT TYPE F BARRIERS WITH CONNECTION ROD ASSEMBLY, AND PULLED TIGHT DURING INSTALLATION TO REMOVE SLACK TO PROVIDE LONGITUDINAL TENSION DURING IMPACT.

AFTER REMOVAL OF ANCHORS HOLES SHALL BE FILLED WITH QUALIFIED SPECIAL MORTAR IN ACCORDANCE WITH SEC 704.

SEE OTHER SHEETS FOR DETAILS NOT SHOWN.

MISSOURI HIGHWAYS AND TRANSPORTATION COMMISSION
105 WEST CAPITOL
JEFFERSON CITY, MO 65102
1-888-ASK-MODOT (1-888-275-6636)

STATE OF MISSOURI
SARAH K. KLEINSCHMIT
NUMBER PE-2007002808
PROFESSIONAL ENGINEER
Sarah Kleinschmit
12/23/2025 12:20:20 PM
SARAH K. KLEINSCHMIT - CIVIL
MO-PE-2007002808

TEMPORARY CONCRETE TRAFFIC BARRIER
STIFFNESS TRANSITION