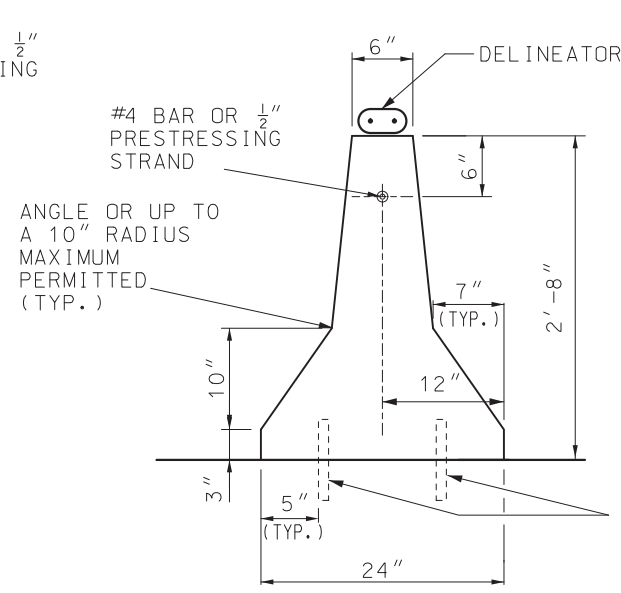
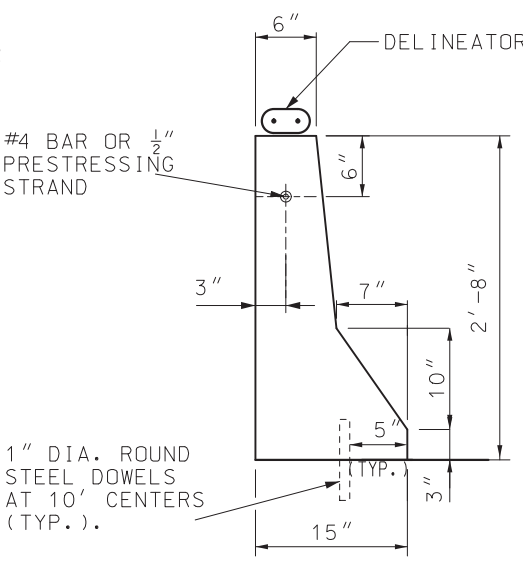


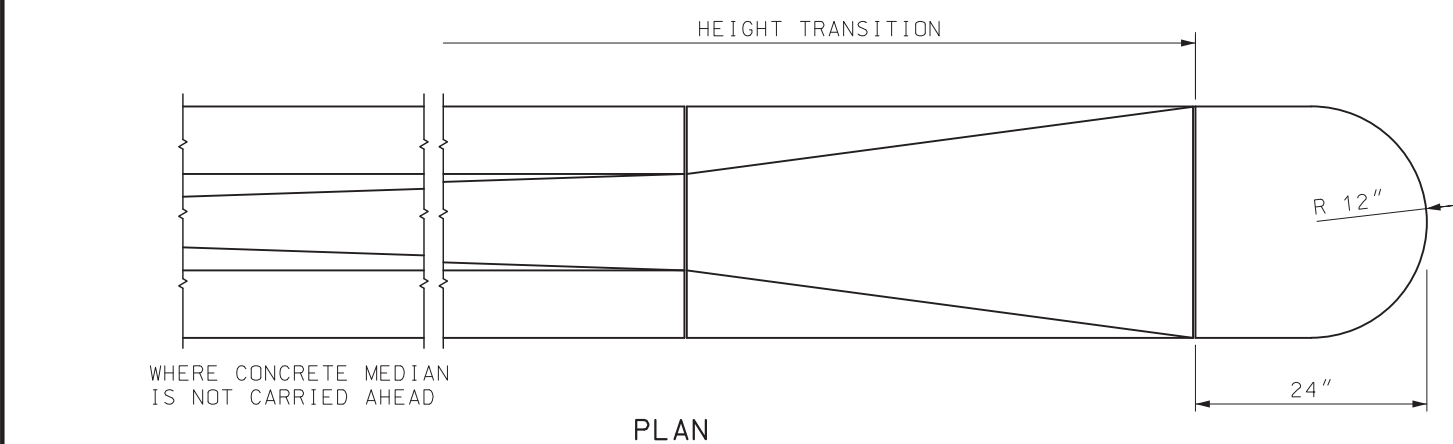
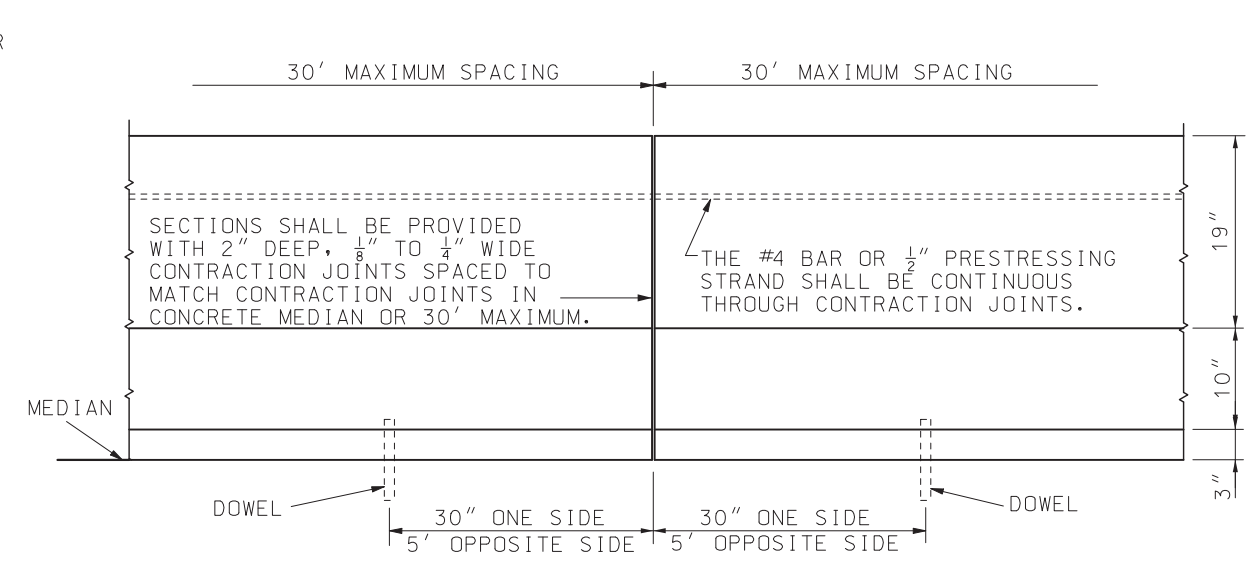
TYPICAL VIEW  
BARRIER FOR  
STEPPED PAVEMENT



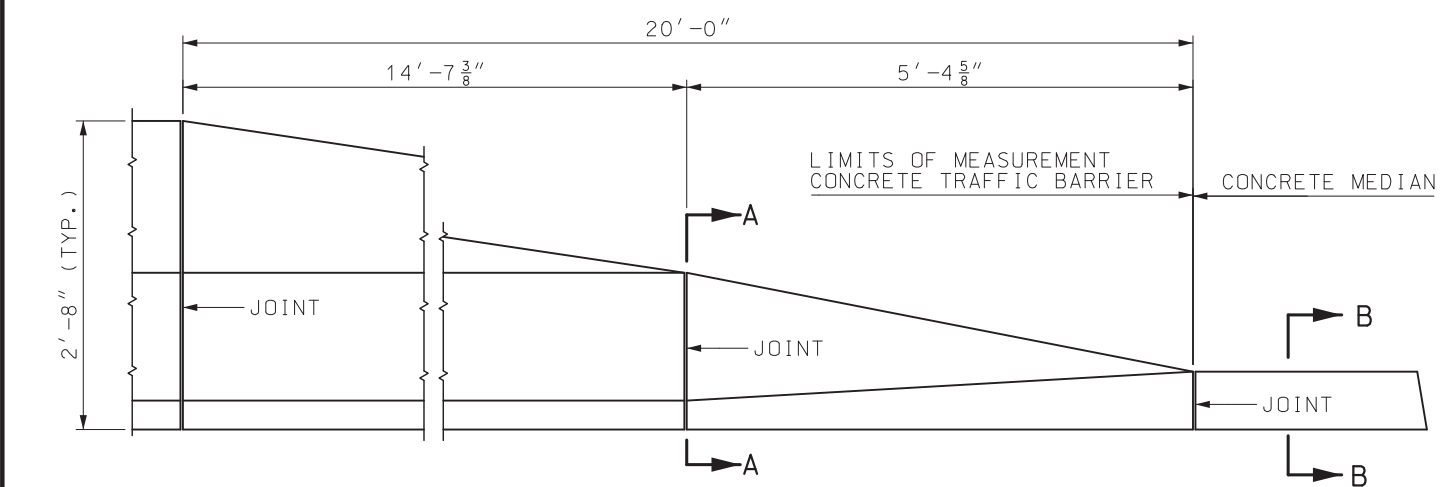
TYPICAL VIEW  
TYPE A - TWO TRAFFIC FACES



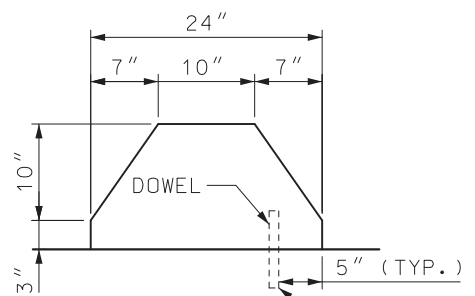
TYPICAL VIEW  
TYPE B - ONE TRAFFIC FACE



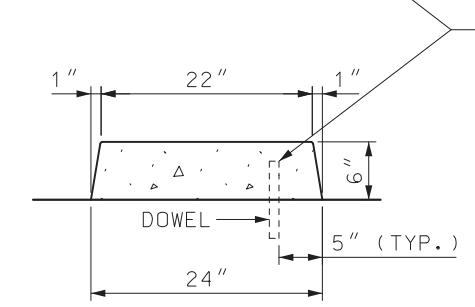
PLAN



ELEVATION  
BARRIER HEIGHT TRANSITION



SECTION A-A



SECTION B-B

GENERAL NOTES:

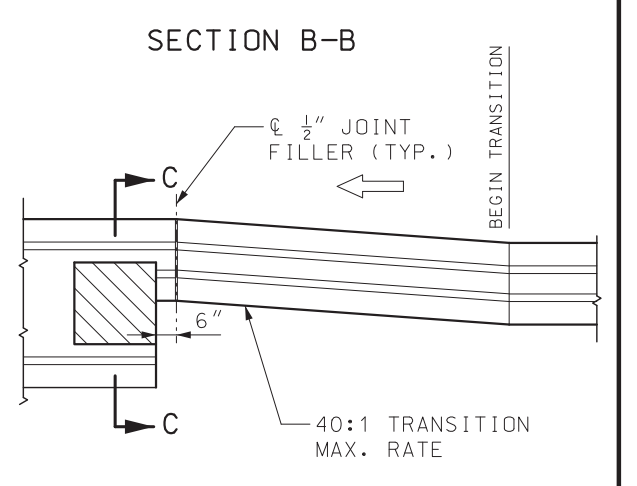
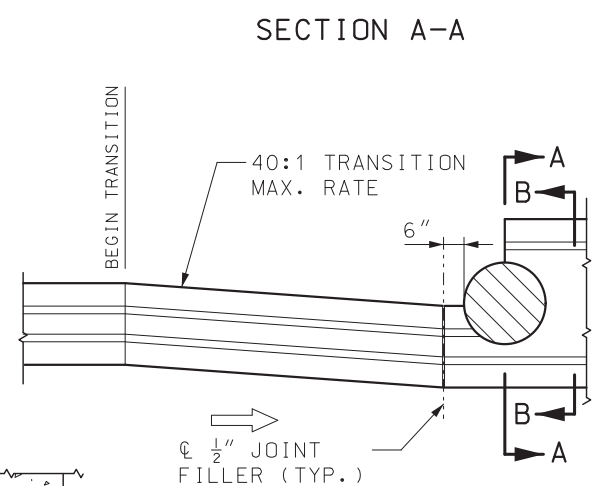
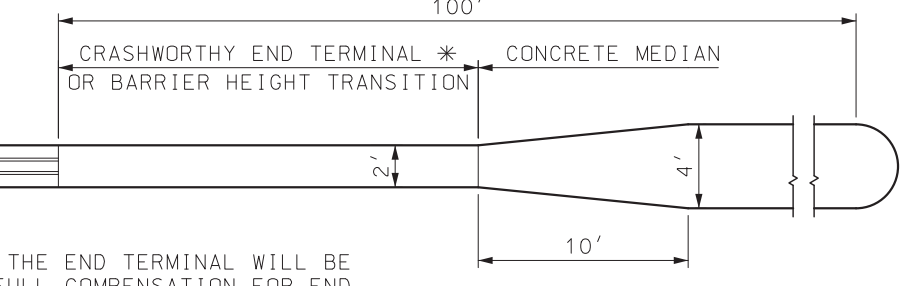
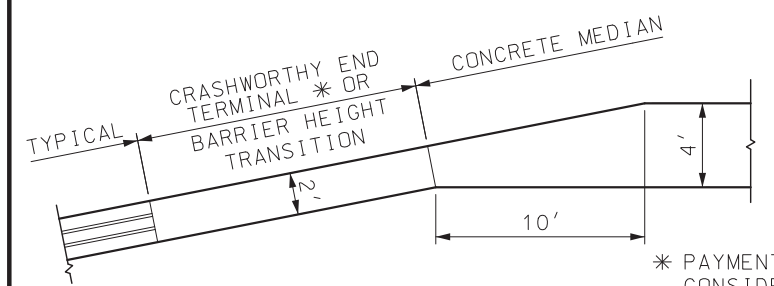
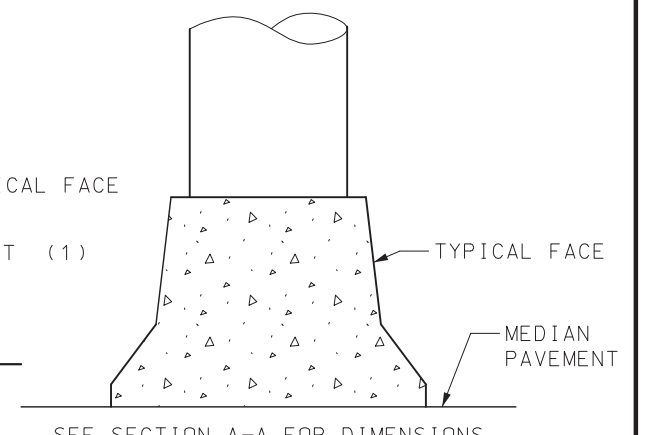
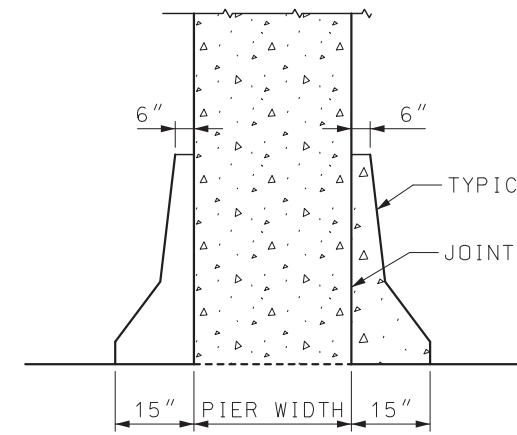
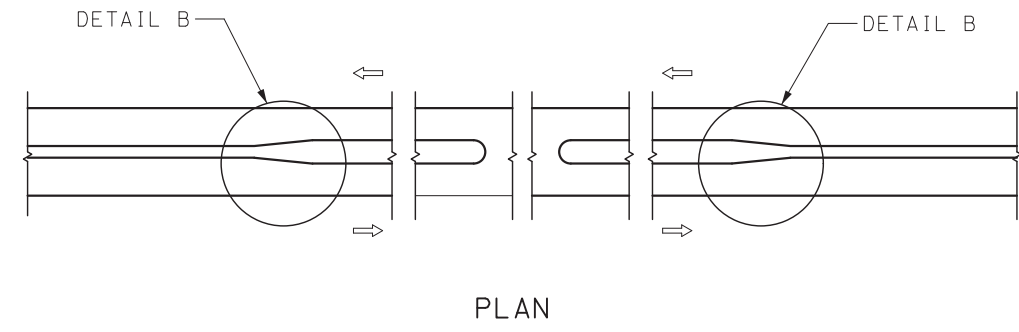
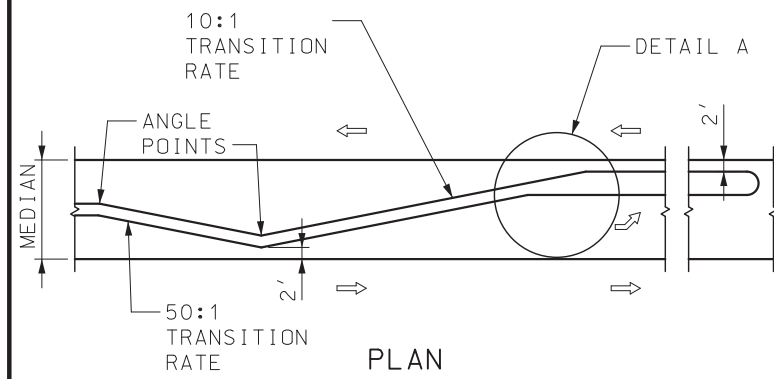
- HEIGHT TRANSITIONS SHALL NOT BE USED IN LOCATIONS WHERE THE POSTED SPEED IS GREATER THAN 35 MPH.
- ALL TOP AND END EDGES SHALL BE CHAMFERED 3/4".
- EXPANSION JOINTS SHALL BE PROVIDED IN THE BARRIER TO MATCH EXPANSION JOINTS IN PAVEMENT.
- #8 REINFORCING BARS WITH AN EPOXY ANCHOR SYSTEM MAY BE SUBSTITUTED FOR SMOOTH 1" DIAMETER ROUND STEEL DOWELS.
- FOR CONCRETE TRAFFIC BARRIER DELINEATION DETAILS, SEE STD PLAN 903.00.

**MISSOURI HIGHWAYS AND TRANSPORTATION COMMISSION**  
 105 WEST CAPITOL  
 JEFFERSON CITY, MO 65102  
 1-888-ASK-MODOT (1-888-275-6636)

STATE OF MISSOURI  
 MARK E. CROARKIN  
 NUMBER PE-2002016640  
 PROFESSIONAL ENGINEER  
 Mark Croarkin  
 04/08/2025 4:43:36 PM  
 MARK E. CROARKIN - CIVIL  
 MO-PE-2002016640

**PERMANENT CONCRETE TRAFFIC BARRIER**  
 TYPE A AND B

DATE EFFECTIVE: 7/1/2025	617.10N	SHEET NO. 1 OF 11
DATE PREPARED: 3/28/2025		



\* PAYMENT FOR THE END TERMINAL WILL BE CONSIDERED FULL COMPENSATION FOR END TERMINAL, BACKUP ASSEMBLIES, AND OTHER ITEMS NECESSARY FOR PROPER INSTALLATION AS REQUIRED BY THE MANUFACTURER.

DETAIL A  
LEFT TURN LANE TRANSITION

DETAIL B  
MEDIAN OPENING TRANSITION

SECTION A-A

SECTION B-B

PLAN

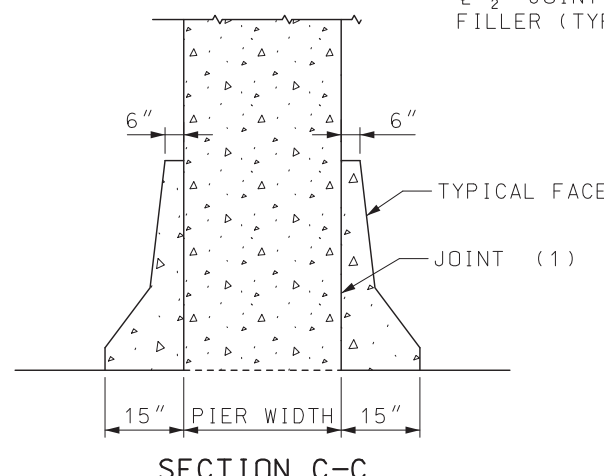
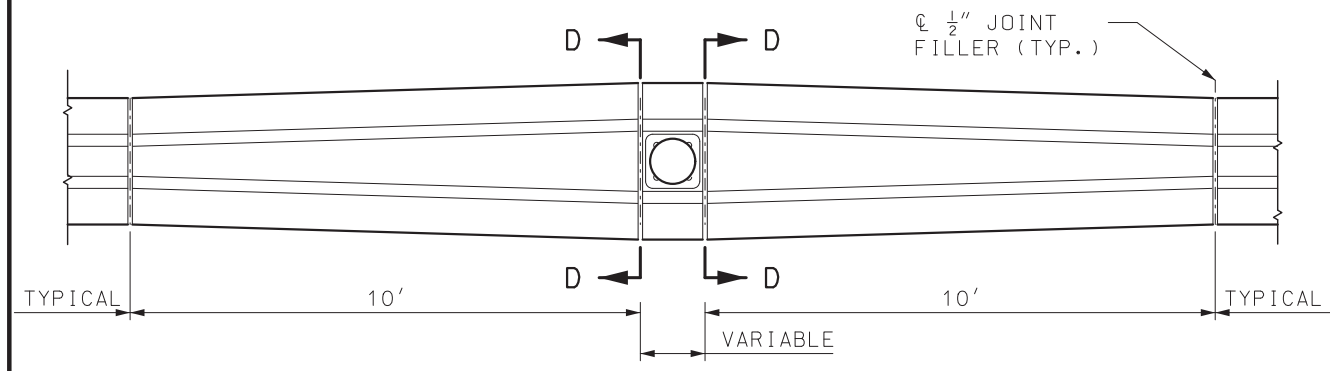
TRANSITION DETAILS FOR PIER PROTECTION

(1) 1" JOINT WITH JOINT FILLER AND SEALER

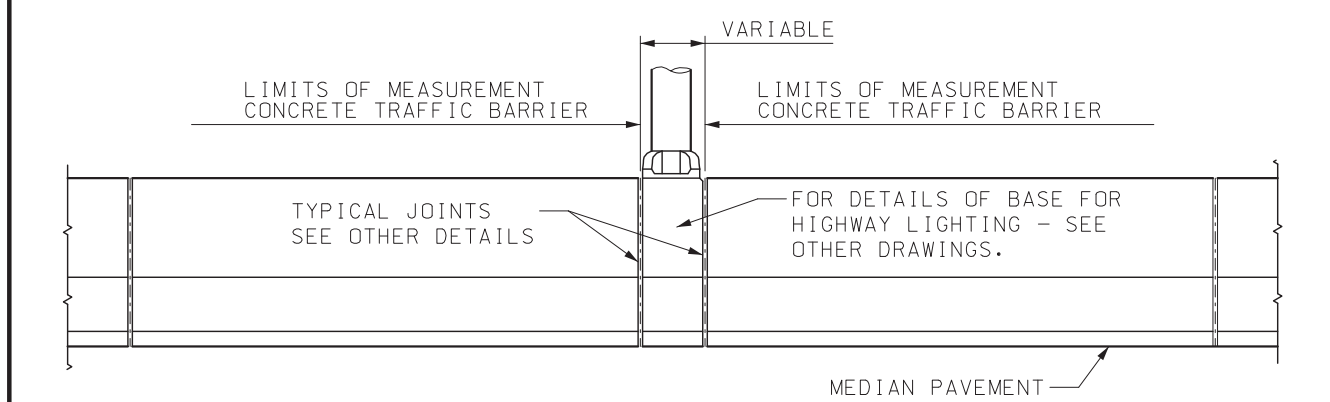
GENERAL NOTES:

FOR DETAILS AND LOCATION OF DOWELS, SEE SHEET 1.

#8 REINFORCING BARS WITH AN EPOXY ANCHOR SYSTEM MAY BE SUBSTITUTED FOR SMOOTH 1" DIAMETER ROUND STEEL DOWELS.

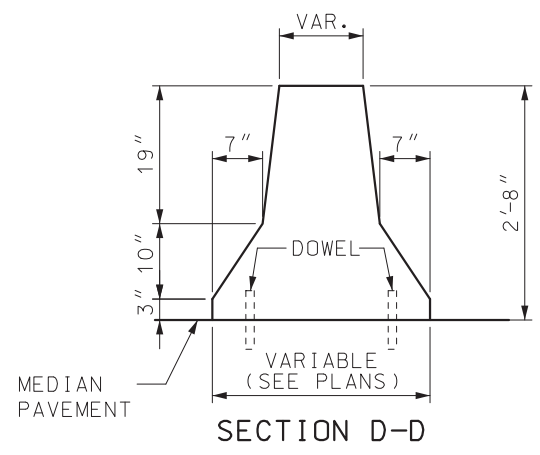


SECTION C-C



ELEVATION

TRANSITION DETAILS FOR MEDIAN LIGHTING



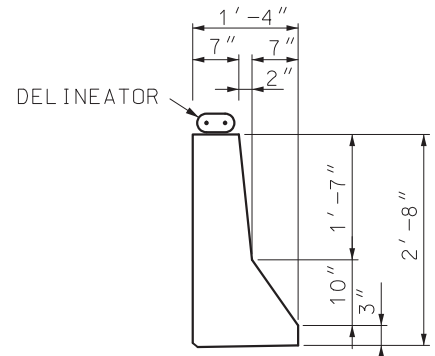
SECTION D-D

**MoDOT** MISSOURI HIGHWAYS AND TRANSPORTATION COMMISSION  
 105 WEST CAPITOL JEFFERSON CITY, MO 65102  
 1-888-ASK-MODOT (1-888-275-6636)

STATE OF MISSOURI  
 MARK E. CROARKIN  
 NUMBER PE-2002016640  
 PROFESSIONAL ENGINEER  
 Mark Croarkin  
 04/08/2025 4:43:57 PM  
 MARK E. CROARKIN - CIVIL  
 MO-PE-2002016640

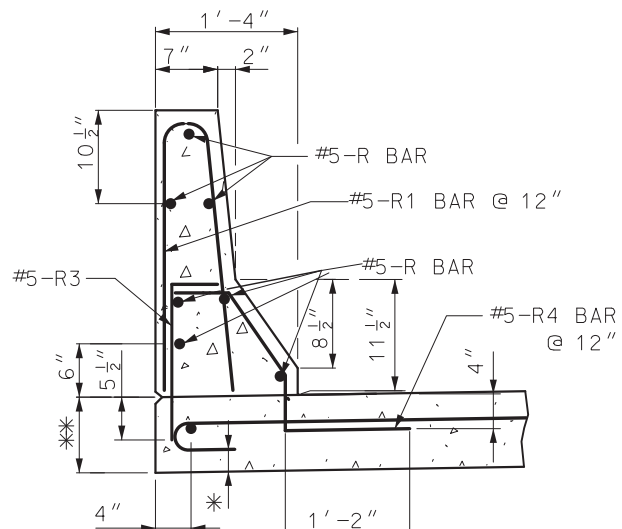
PERMANENT CONCRETE TRAFFIC BARRIER  
 TYPE A AND B

DATE EFFECTIVE: 7/1/2025	617.10N	SHEET NO. 2 OF 11
DATE PREPARED: 3/28/2025		

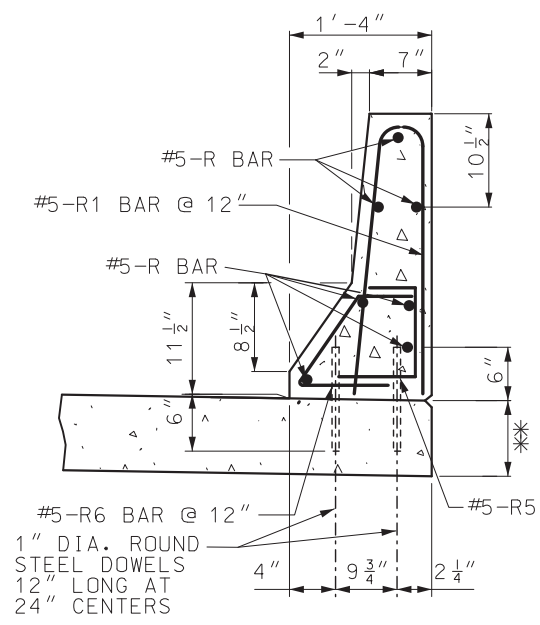


TYPE B (MODIFIED) TYPICAL SECTION

TABLE A TRANSVERSE PAVEMENT REINFORCEMENT	
PAVEMENT THICKNESS	BAR SIZE & SPACING
8"	#5 @ 5" *
9"	#5 @ 6" *
10"	#5 @ 8"
11"	#5 @ 9"
≥ 12"	#6 @ 12"



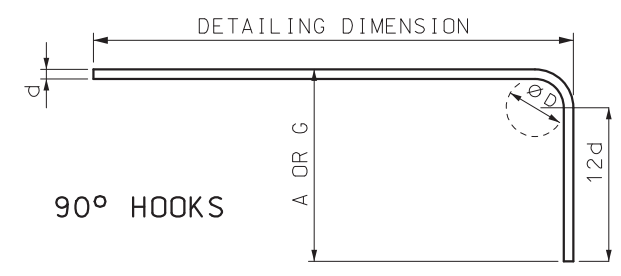
PART SECTION THROUGH UPPER BARRIER



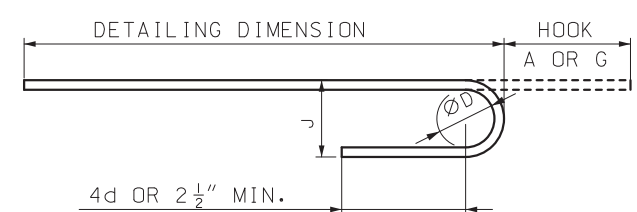
PART SECTION THROUGH LOWER BARRIER

END HOOK DIMENSIONS				
BAR SIZE	D (IN.)	ALL GRADES		
		180° HOOKS	J	90° HOOKS
#5	3 3/4"	7"	5"	10"
#6	4 1/2"	8"	6"	12"

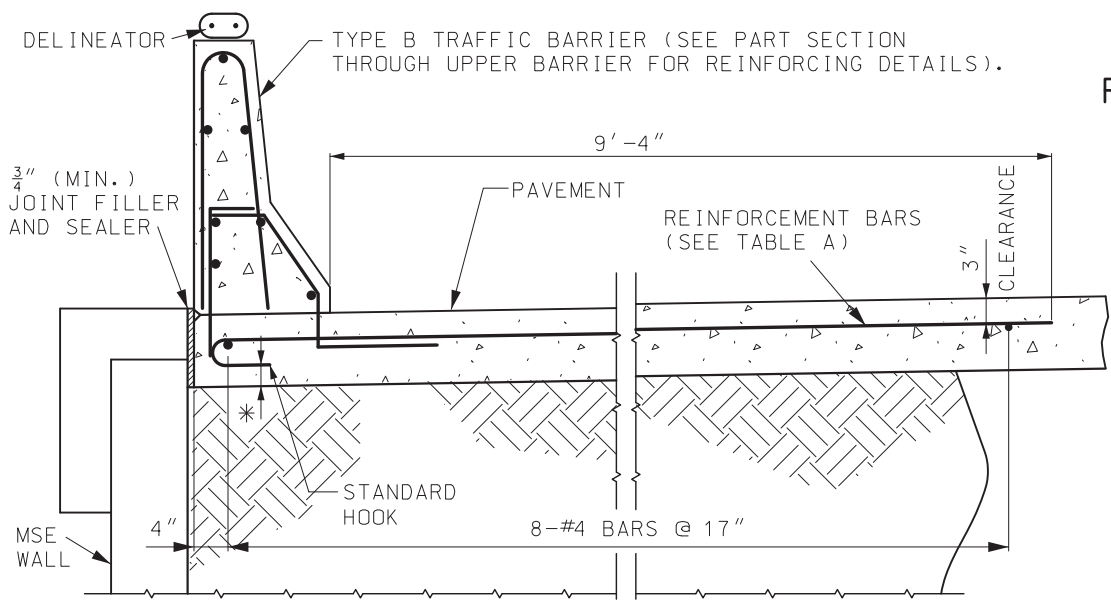
ALL STANDARD HOOKS AND BENDS OTHER THAN 180° TO BE BENT WITH THE SAME PROCEDURE AS FOR 90° STANDARD HOOKS.



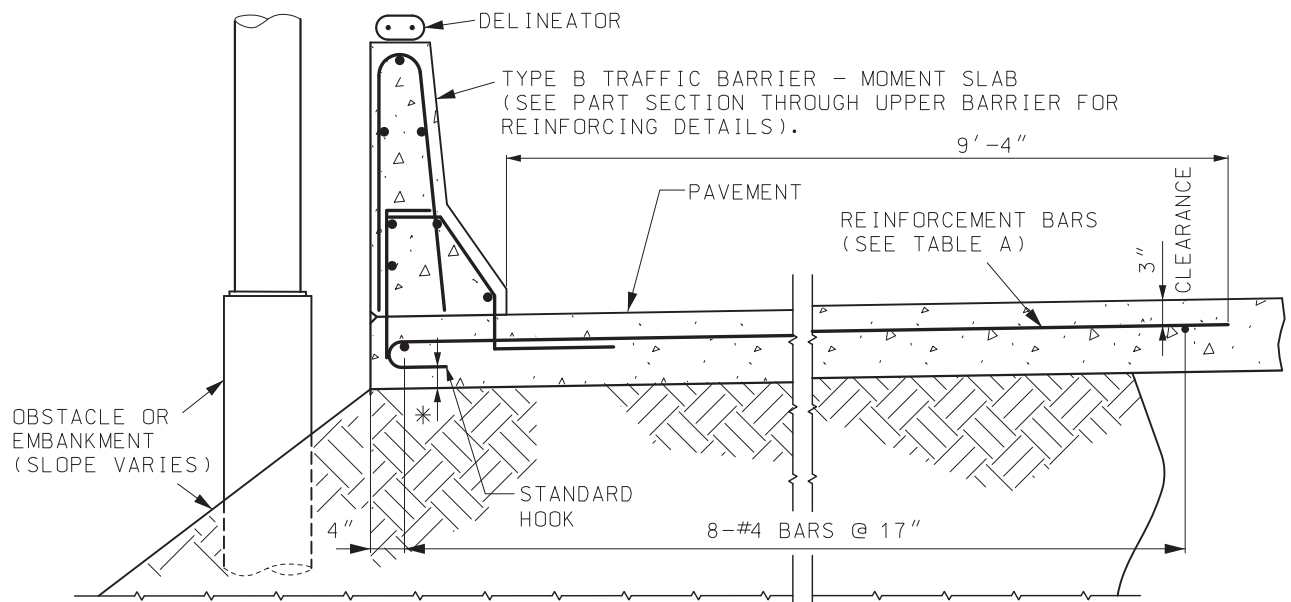
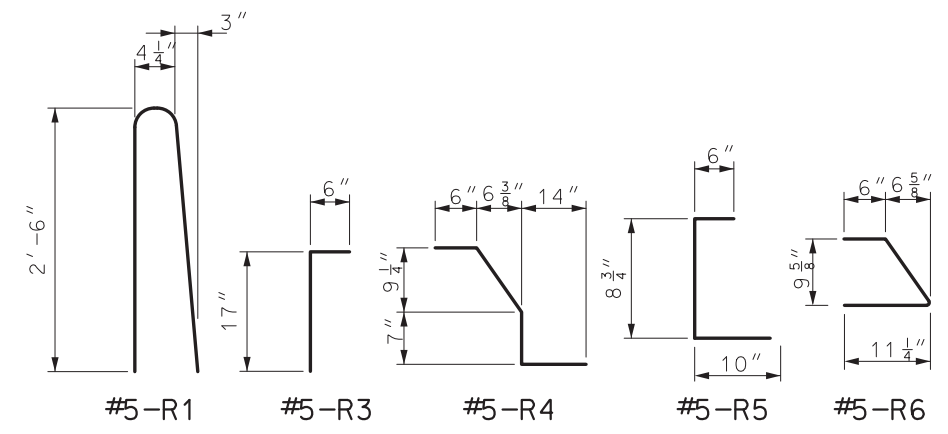
90° HOOKS



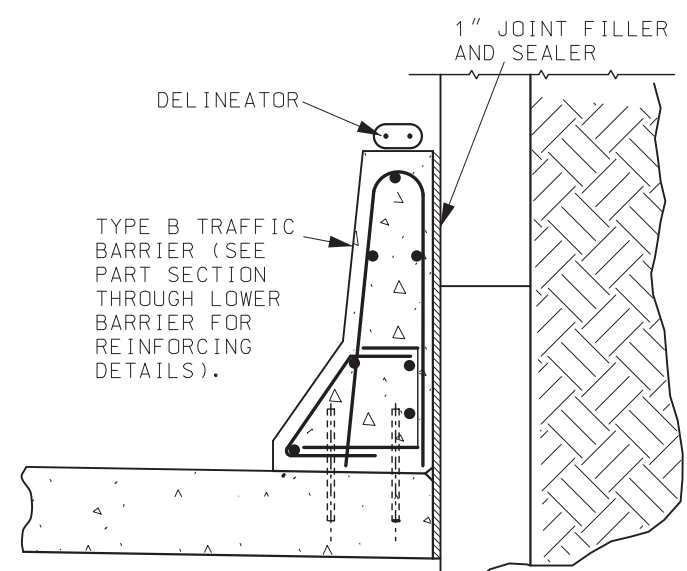
180° HOOKS



TYPE B TRAFFIC BARRIER ON TOP OF MSE WALL



TYPE B TRAFFIC BARRIER - MOMENT SLAB\*\*



TYPE B TRAFFIC BARRIER AT THE SIDE OF MSE WALL

GENERAL NOTES:

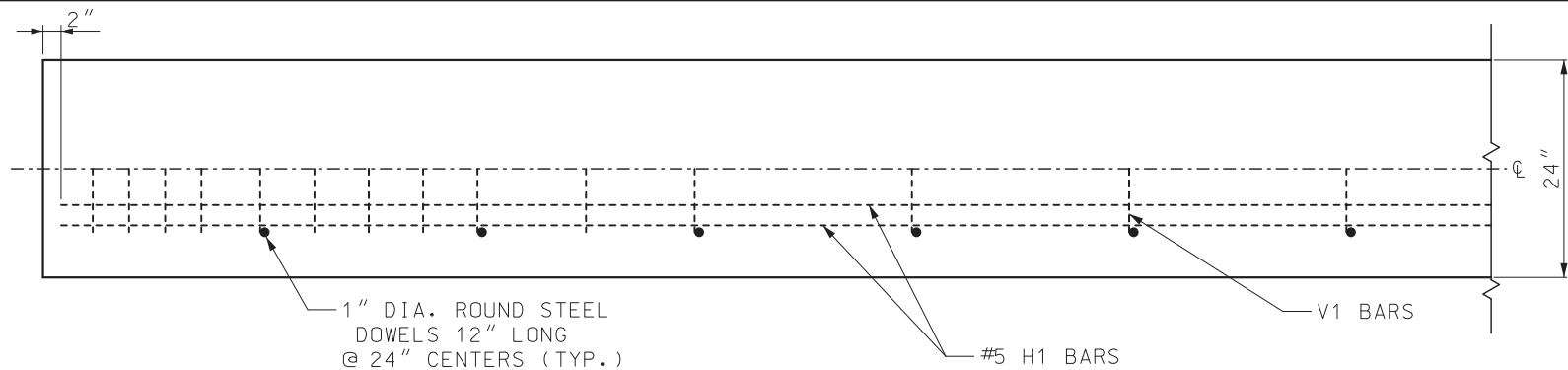
- ALL REINFORCEMENT SHALL BE GRADE 60 EPOXY COATED.
- NO DIRECT PAYMENT WILL BE MADE FOR REINFORCING STEEL.
- MINIMUM CLEARANCE TO REINFORCING STEEL SHALL BE 1 1/2", UNLESS OTHERWISE SHOWN.
- TYPE B (MODIFIED) SHALL BE USED ONLY AT LOCATIONS SHOWN ON PLANS.
- #8 REINFORCING BARS WITH AN EPOXY ANCHOR SYSTEM MAY BE SUBSTITUTED FOR SMOOTH 1" DIAMETER ROUND STEEL DOWELS.
- FOR CONCRETE TRAFFIC BARRIER DELINEATION DETAILS, SEE STD PLAN 903.00.
- \* TILT TRANSVERSE PAVEMENT REINFORCEMENT HOOKS FROM VERTICAL ALIGNMENT TO MAINTAIN 1 1/2" MINIMUM CLEARANCE.
- \*\* SEE ROADWAY PAVEMENT DESIGN.

**MoDOT** MISSOURI HIGHWAYS AND TRANSPORTATION COMMISSION  
 105 WEST CAPITOL JEFFERSON CITY, MO 65102  
 1-888-ASK-MODOT (1-888-275-6636)

STATE OF MISSOURI  
 MARK E. CROARKIN  
 NUMBER PE-2002016640  
 PROFESSIONAL ENGINEER  
 Mark Croarkin  
 04/08/2025 4:44:16 PM  
 MARK E. CROARKIN - CIVIL  
 MO-PE-2002016640

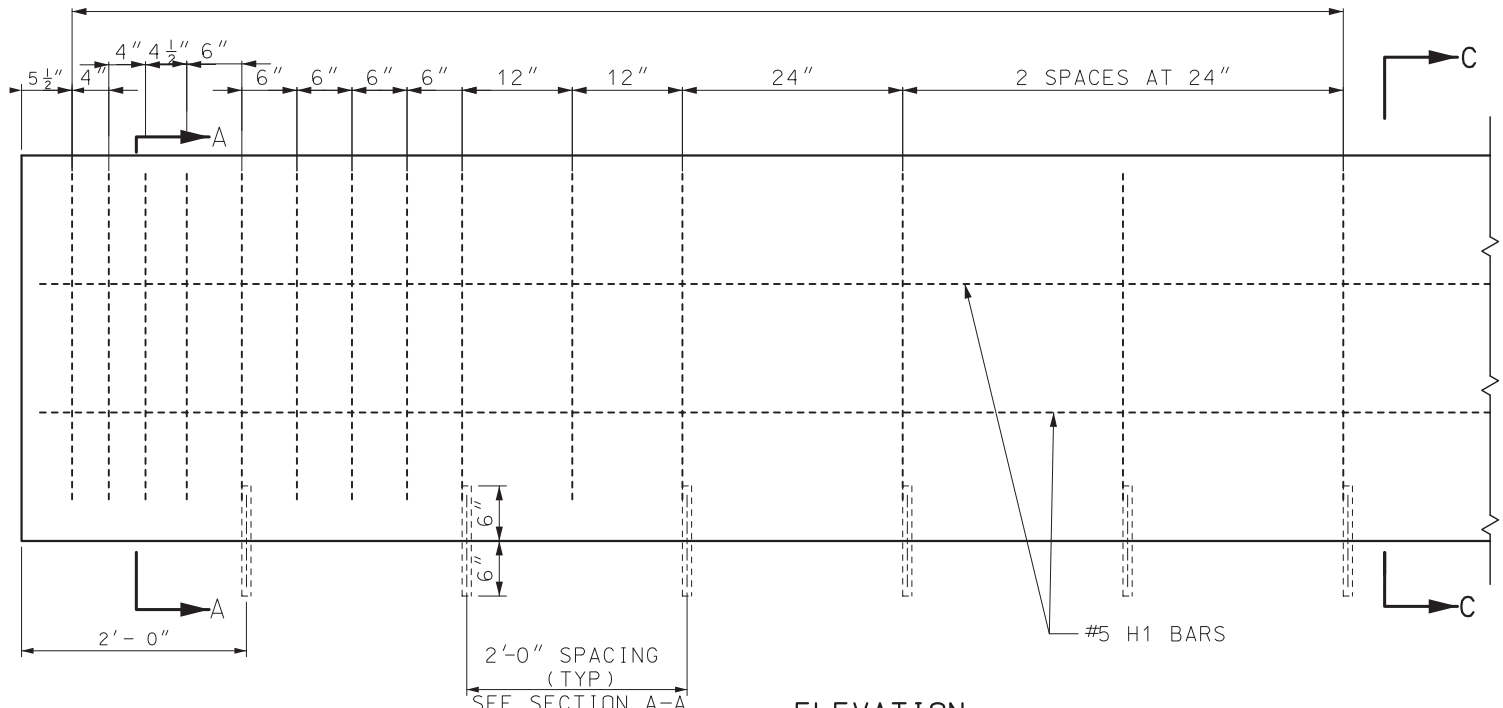
PERMANENT CONCRETE TRAFFIC BARRIER  
 TYPE B MODIFIED  
 AT MSE WALL OR MOMENT SLAB

DATE EFFECTIVE:	7/1/2025	617.10N	SHEET NO. 3 OF 11
DATE PREPARED:	3/28/2025		

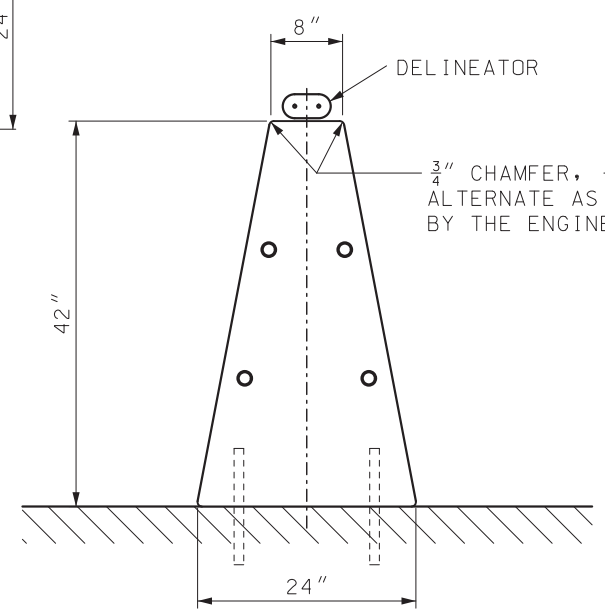


PLAN VIEW  
(SYMMETRICAL ABOUT CENTERLINE)

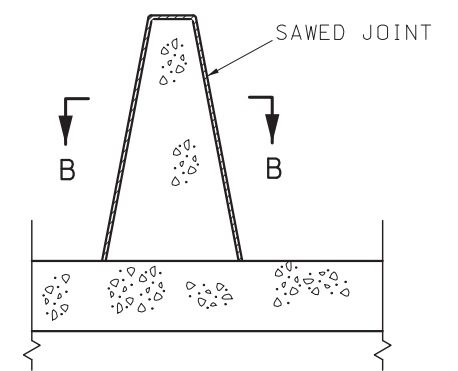
LIMITS OF #4 - V1 SPACED AS SHOWN BELOW  
AT TERMINAL ENDS OF BARRIER ONLY



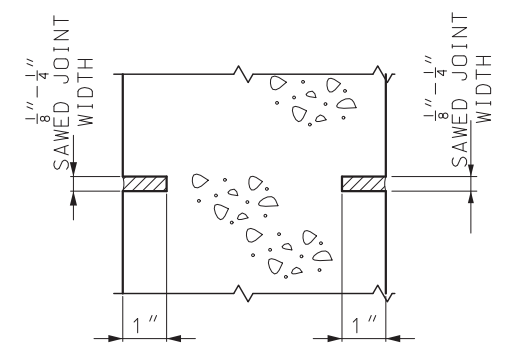
ELEVATION



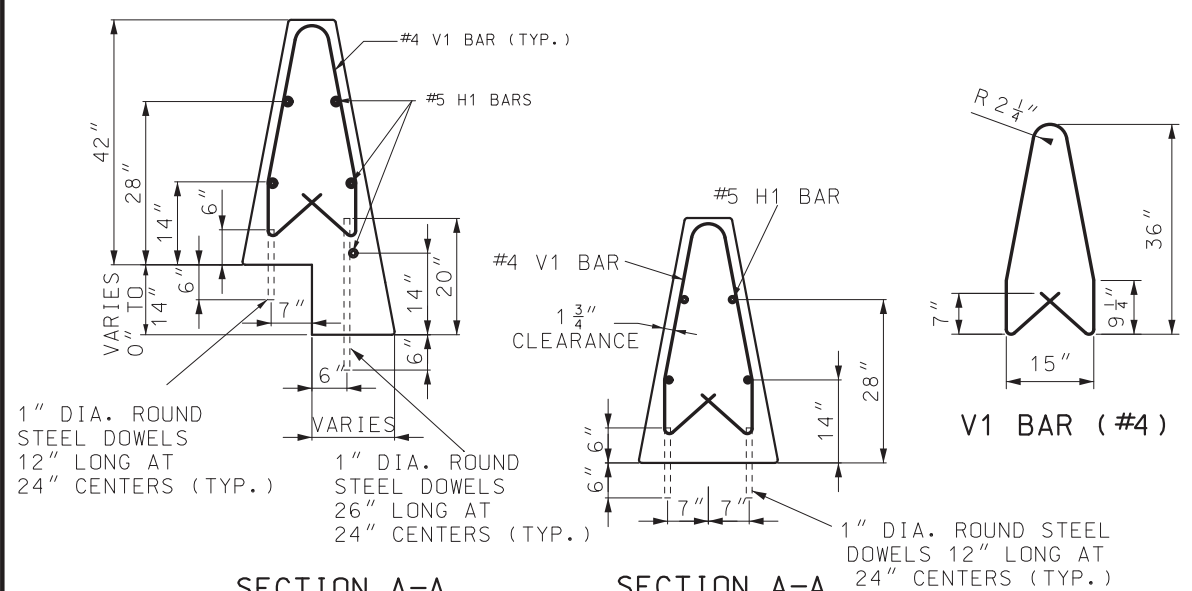
TYPE C  
TYPICAL SECTION



SECTION THROUGH SAWED JOINT

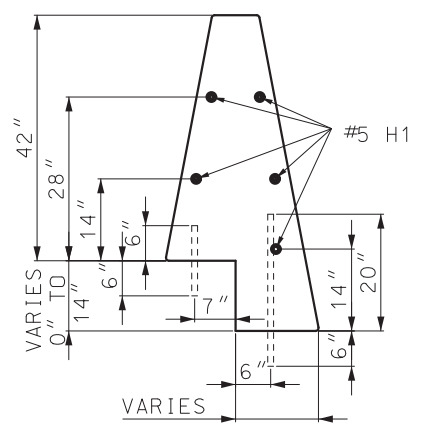


SECTION B-B

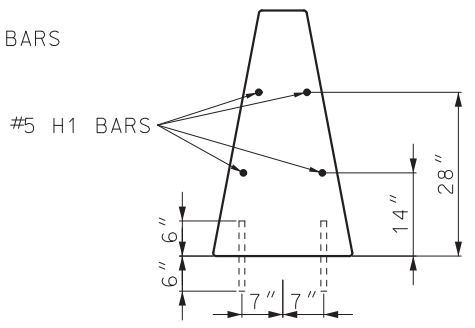


SECTION A-A  
(STEPPED PAVEMENT)      SECTION A-A  
(NORMAL PAVEMENT)

REINFORCING DETAILS



SECTION C-C  
(STEPPED PAVEMENT)



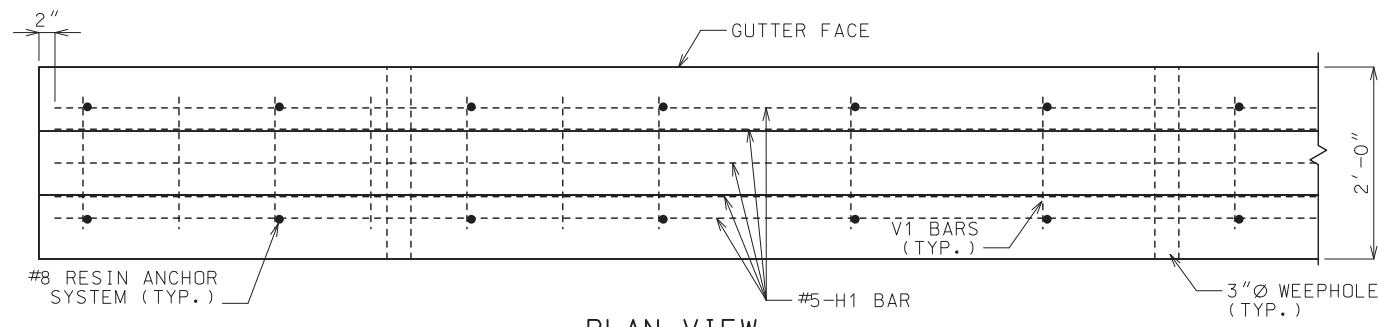
SECTION C-C  
(NORMAL PAVEMENT)

GENERAL NOTES:

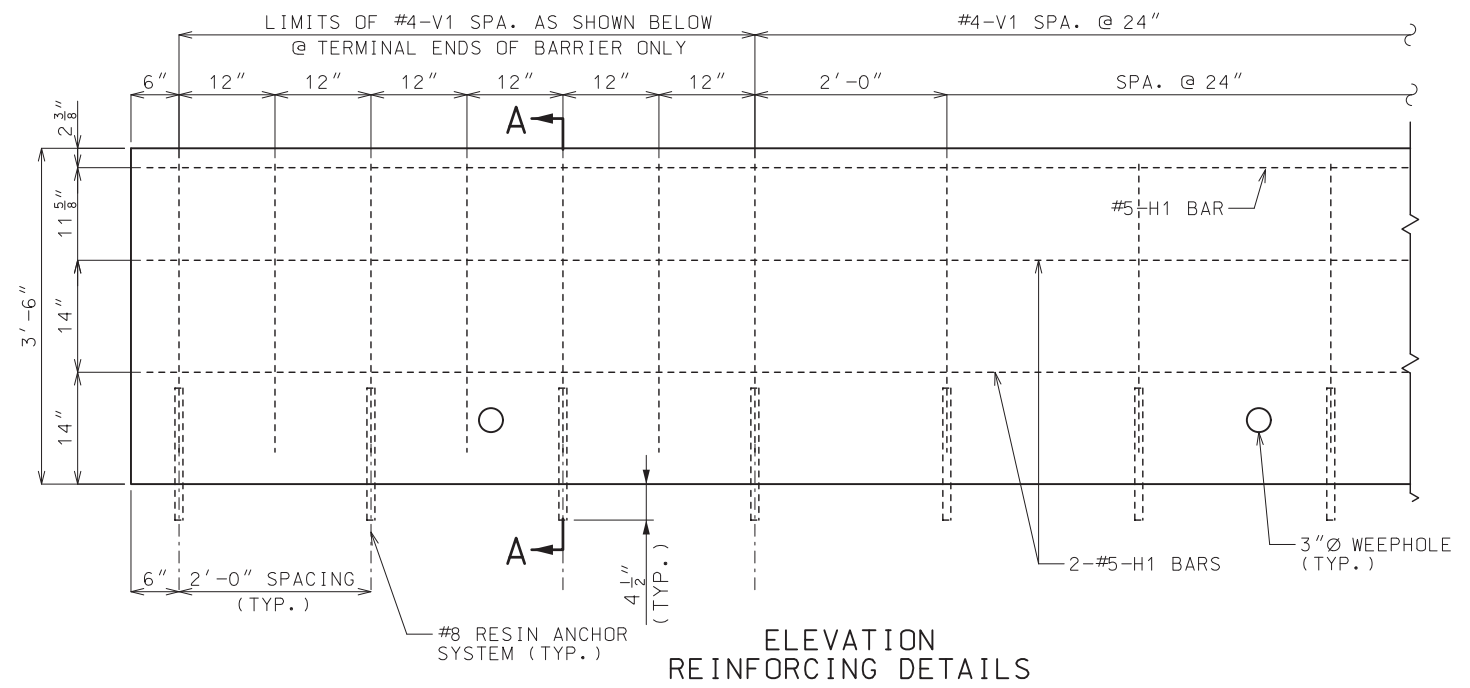
- ALL REINFORCEMENT SHALL BE GRADE 60 EPOXY COATED.
- BAR SPLICES SHALL BE A MINIMUM OF 24 TIMES THE NOMINAL DIAMETER OF THE BAR.
- ANY METHOD DEvised BY THE CONTRACTOR AND APPROVED BY THE ENGINEER THAT WILL ENSURE THE LONGITUDINAL REINFORCING STEEL WILL BE POSITIONED  $\pm 1/2$ " AS DIMENSIONED WILL BE SATISFACTORY.
- THE CONTRACTOR HAS THE OPTION TO SLIP-FORM THE BARRIER. IN WHICH CASE, ADDITIONAL REINFORCEMENT MAY BE TIED TO THE UPPER TWO-THIRDS OF THE REINFORCING CAGE TO PROVIDE BRACING.
- ANCHORING DOWELS MAY BE OMITTED WHEN THE PLANS SPECIFY A MINIMUM  $1 3/4$ " PAVEMENT SURFACE TO BE PLACED ABUTTING BOTH BARRIER FACES.
- SAWED JOINTS SHALL BE LOCATED AT PAVEMENT TRANSVERSE JOINTS.
- #8 REINFORCING BARS WITH AN EPOXY ANCHOR SYSTEM MAY BE SUBSTITUTED FOR SMOOTH 1" DIAMETER ROUND STEEL DOWELS.
- FOR CONCRETE TRAFFIC BARRIER DELINEATION DETAILS, SEE STD PLAN 903.00.

<p><b>MISSOURI HIGHWAYS AND TRANSPORTATION COMMISSION</b></p> <p>105 WEST CAPITOL JEFFERSON CITY, MO 65102 1-888-ASK-MODOT (1-888-275-6636)</p>	
<p>Mark E. Croarkin 04/08/2025 4:44:43 PM MARK E. CROARKIN - CIVIL MO-PE-2002016640</p>	<p><b>PERMANENT CONCRETE TRAFFIC BARRIER</b></p> <p>TYPE C</p>
<p>DATE EFFECTIVE: 7/1/2025</p> <p>DATE PREPARED: 3/28/2025</p>	<p>617.10N</p> <p>SHEET NO. 4 OF 11</p>

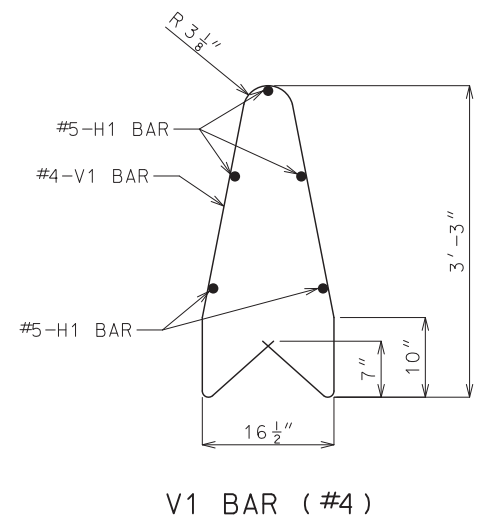




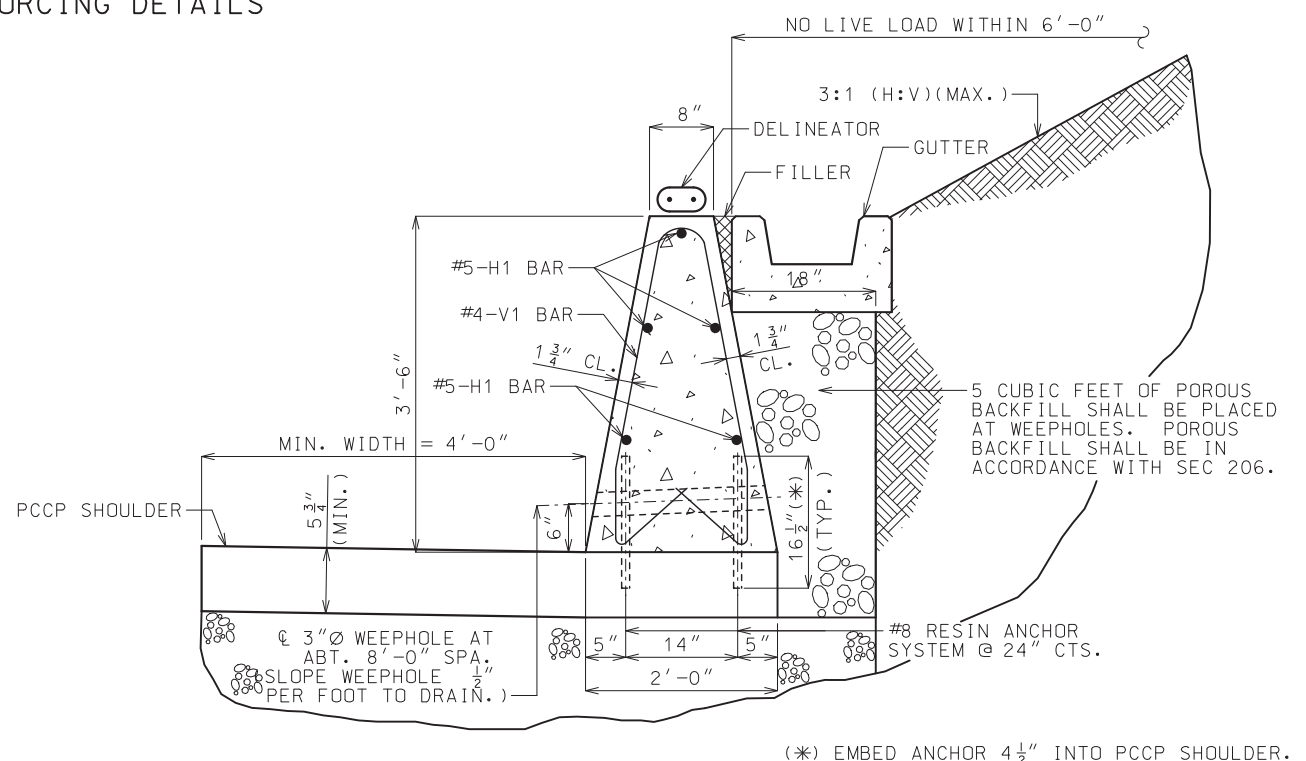
PLAN VIEW  
NOTE: GUTTER NOT SHOWN FOR CLARITY.



ELEVATION REINFORCING DETAILS



V1 BAR (#4)



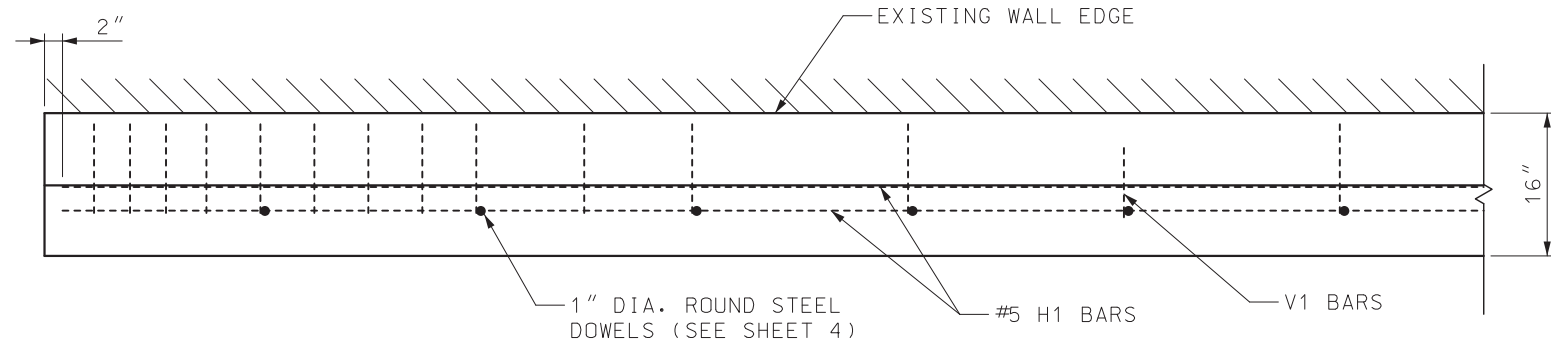
SECTION A-A  
(FOR SLOPING AND NONSLOPING BACKSLOPE)

(\* ) EMBED ANCHOR 4 1/2" INTO PCCP SHOULDER.

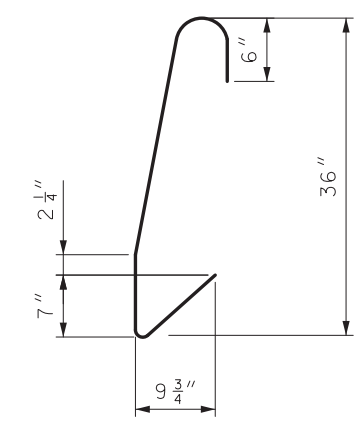
GENERAL NOTES:

- CONCRETE SHALL BE CLASS B  $f'c = 4,000$  PSI.
- ALL REINFORCEMENT SHALL BE GRADE 60 EPOXY COATED.
- ANGLE OF INTERNAL FRICTION,  $\phi_f \geq 27^\circ$  FOR BACKFILL MATERIAL.
- MINIMUM CLEARANCE TO REINFORCING STEEL SHALL BE  $1\frac{1}{2}$ ", UNLESS OTHERWISE SHOWN.
- BAR SPLICES SHALL BE A MINIMUM OF 24 TIMES THE NOMINAL DIAMETER OR THE BAR.
- ANY METHOD DEvised BY THE CONTRACTOR AND APPROVED BY THE ENGINEER THAT WILL ENSURE THE LONGITUDINAL REINFORCING STEEL WILL BE POSITIONED  $\pm\frac{1}{2}$ " AS DIMENSIONED WILL BE SATISFACTORY.
- THE CONTRACTOR HAS THE OPTION TO SLIP-FORM THE BARRIER. IN WHICH CASE, ADDITIONAL REINFORCEMENT MAY BE TIED TO THE UPPER TWO-THIRDS OF THE REINFORCING CAGE TO PROVIDE BRACING.
- THIS BARRIER SHALL NOT BE USED TO SUPPORT HIGHWAY LIGHTING POLES.
- THIS BARRIER SHALL NOT BE USED FOR BRIDGE ROADWAY APPLICATIONS.
- SAWED JOINTS SHALL BE SPACED AT 15'-0". SEE OTHER STANDARD PLANS FOR SAWED JOINT DETAIL.
- TYPE C BARRIER MODIFIED RETAINING WALL WITH NONMOMENT SLAB SHALL BE USED ONLY AT LOCATIONS SHOWN ON PLANS.
- FOR CONCRETE TRAFFIC BARRIER DELINEATION DETAILS, SEE STD PLAN 903.00.
- RESIN ANCHOR SYSTEM SHALL BE DRILLED IN THE PAVEMENT.
- WHEN BARRIER HEIGHT EXCEEDS 42" OR SLOPE EXCEEDS 3:1 (H:V) OR LIVE LOAD IS WITHIN 6'-0", CONTACT BRIDGE DIVISION FOR SPECIAL DESIGN.

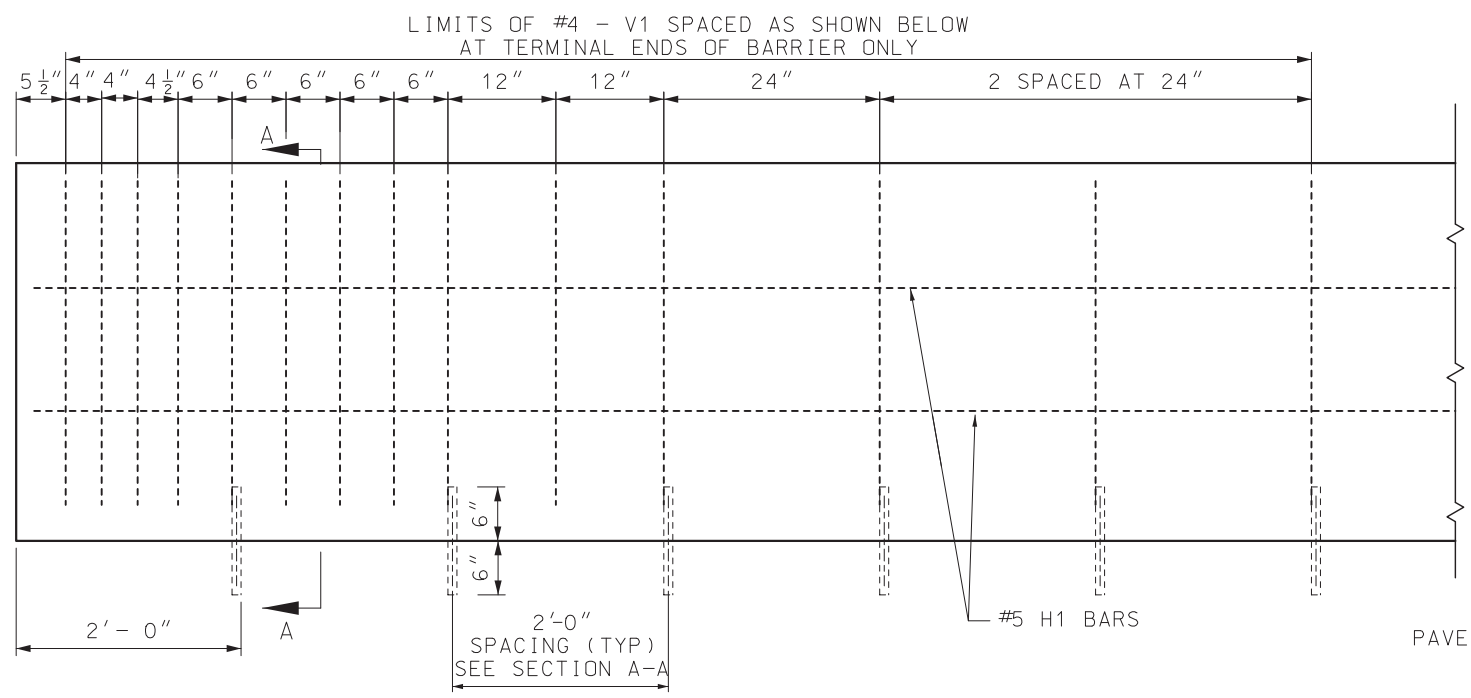
		<b>MISSOURI HIGHWAYS AND TRANSPORTATION COMMISSION</b>	
		105 WEST CAPITOL JEFFERSON CITY, MO 65102 1-888-ASK-MODOT (1-888-275-6636)	
		<b>PERMANENT CONCRETE TRAFFIC BARRIER</b> <b>TYPE C AS RETAINING WALL</b>	
DATE EFFECTIVE:	7/1/2025	617.10N	SHEET NO. 6 OF 11
DATE PREPARED:	3/28/2025		



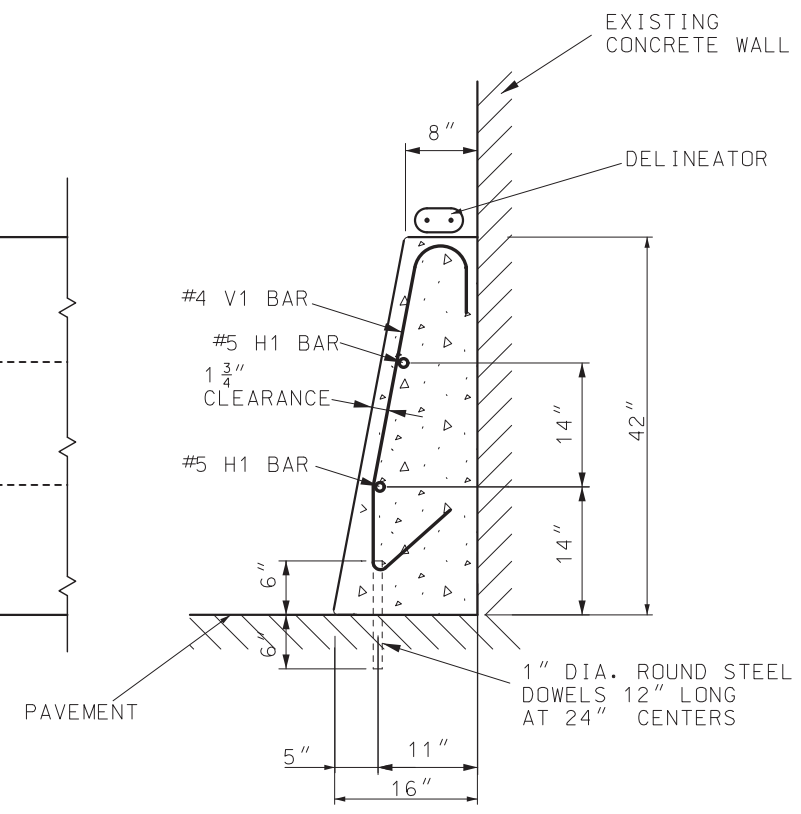
PLAN VIEW



V1 BAR (#4)



ELEVATION REINFORCING DETAILS



SECTION A-A

GENERAL NOTES:

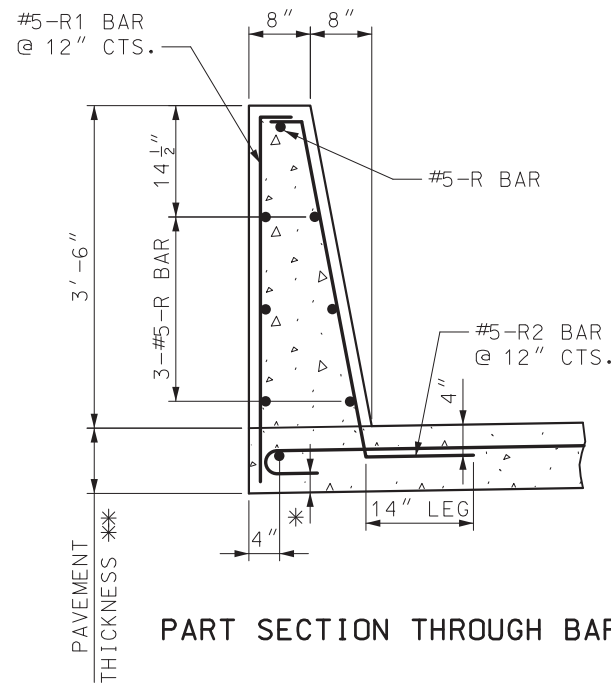
- ALL REINFORCEMENT SHALL BE GRADE 60 EPOXY COATED.
- BAR SPLICES SHALL BE A MINIMUM OF 24 TIMES THE NOMINAL DIAMETER OF THE BAR.
- ANY METHOD DEvised BY THE CONTRACTOR AND APPROVED BY THE ENGINEER THAT WILL ENSURE THE LONGITUDINAL REINFORCING STEEL WILL BE POSITIONED  $\pm \frac{1}{2}$ " AS DIMENSIONED WILL BE SATISFACTORY.
- THE CONTRACTOR HAS THE OPTION TO SLIP-FORM THE BARRIER. IN WHICH CASE, ADDITIONAL REINFORCEMENT MAY BE TIED TO THE UPPER TWO-THIRDS OF THE REINFORCING CAGE TO PROVIDE BRACING.
- THIS BARRIER SHALL NOT BE USED TO SUPPORT HIGHWAY LIGHTING POLES.
- THIS BARRIER SHALL NOT BE USED FOR BRIDGE ROADWAY APPLICATIONS.
- SAWED JOINTS SHALL BE LOCATED AT PAVEMENT TRANSVERSE JOINTS.
- TYPE D SHALL BE USED ONLY AT LOCATIONS SHOWN ON PLANS.
- #8 REINFORCING BARS WITH AN EPOXY ANCHOR SYSTEM MAY BE SUBSTITUTED FOR SMOOTH 1" DIAMETER ROUND STEEL DOWELS.
- FOR CONCRETE TRAFFIC BARRIER DELINEATION DETAILS, SEE STD PLAN 903.00.

**MoDOT** MISSOURI HIGHWAYS AND TRANSPORTATION COMMISSION  
 105 WEST CAPITOL JEFFERSON CITY, MO 65102  
 1-888-ASK-MODOT (1-888-275-6636)

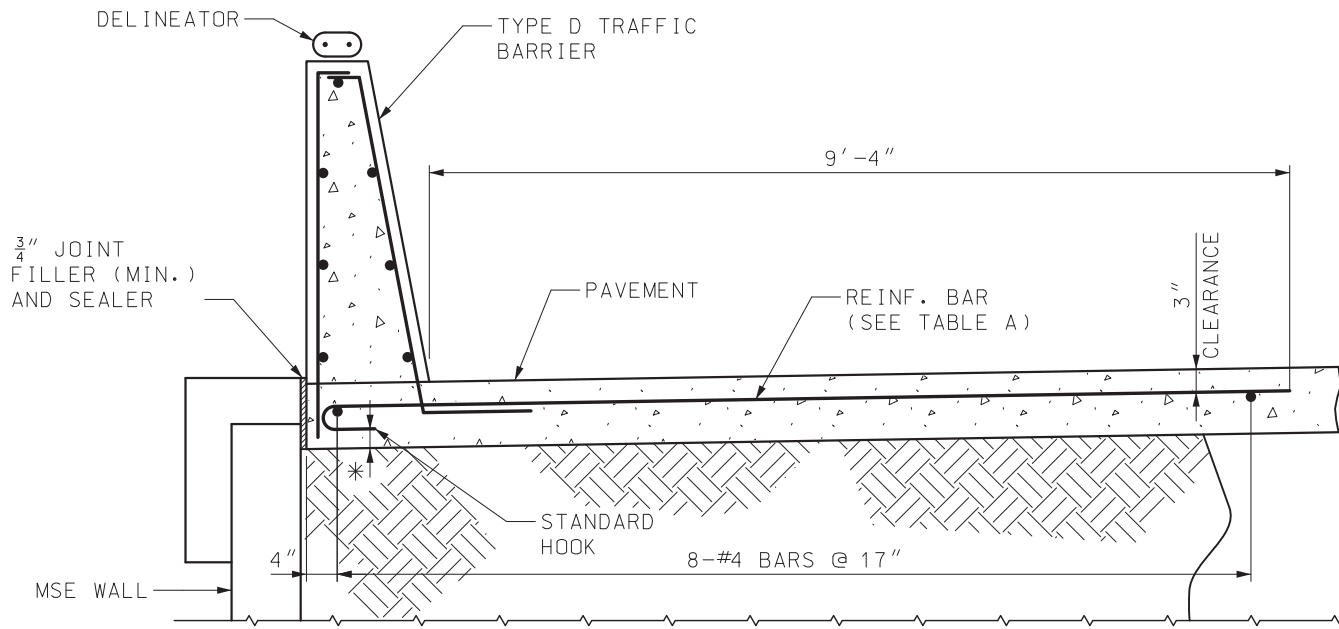
STATE OF MISSOURI  
 MARK E. CROARKIN  
 NUMBER PE-2002016640  
 PROFESSIONAL ENGINEER  
 Mark Croarkin  
 04/08/2025 4:48:40 PM  
 MARK E. CROARKIN - CIVIL  
 MO-PE-2002016640

**PERMANENT CONCRETE TRAFFIC BARRIER TYPE D**

DATE EFFECTIVE: 7/1/2025	617.10N	SHEET NO. 7 OF 11
DATE PREPARED: 3/28/2025		

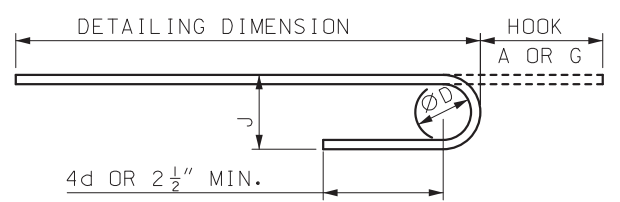
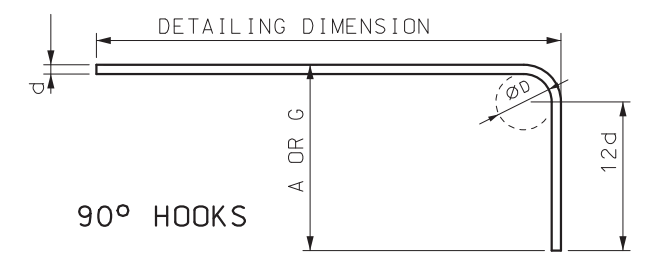


PART SECTION THROUGH BARRIER



TYPE D TRAFFIC BARRIER ON TOP OF MSE WALL

END HOOK DIMENSIONS				
BAR SIZE	D (IN.)	ALL GRADES		
		180° HOOKS		90° HOOKS
		A OR G	J	A OR G
#5	3 3/4"	7"	5"	10"
#6	4 1/2"	8"	6"	12"



180° HOOKS

ALL STANDARD HOOKS AND BENDS OTHER THAN 180° TO BE BENT WITH THE SAME PROCEDURE AS FOR 90° STANDARD HOOKS.

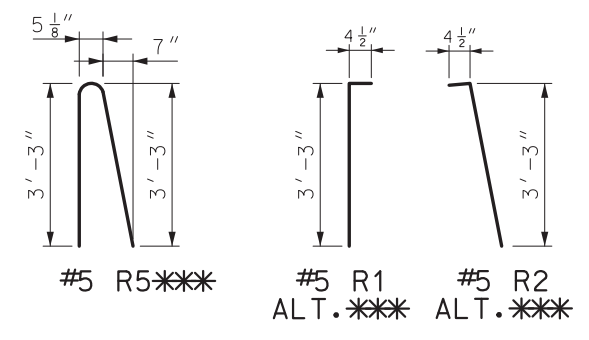
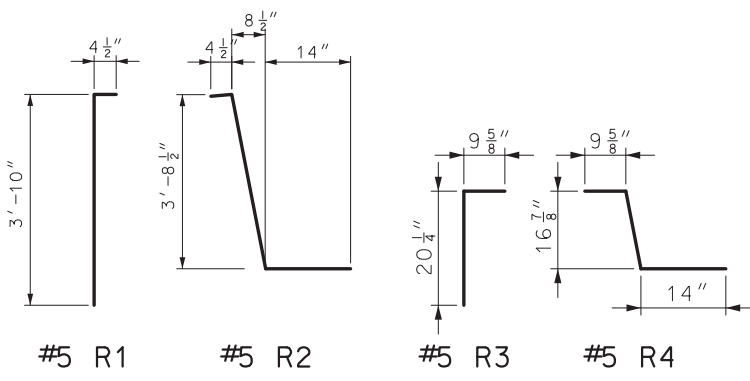


TABLE A TRANSVERSE PAVEMENT REINFORCEMENT	
PAVEMENT THICKNESS **	BAR SIZE & SPACING
8"	#5 @ 4"*
9"	#5 @ 5"*
10"	#5 @ 6"
11"	#5 @ 7"
12"	#6 @ 12"
≥ 13"	#6 @ 12"

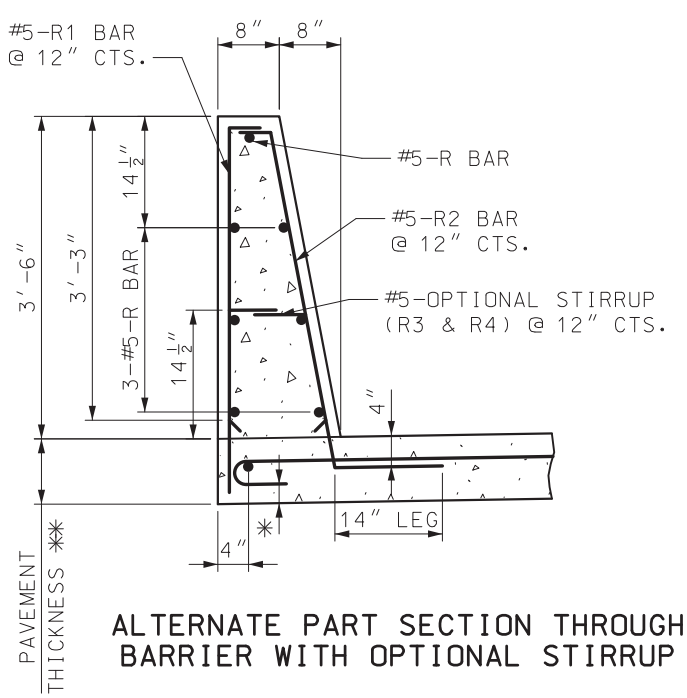
GENERAL NOTES:

- ALL REINFORCEMENT SHALL BE GRADE 60 EPOXY COATED.
- NO DIRECT PAYMENT WILL BE MADE FOR REINFORCING STEEL.
- MINIMUM CLEARANCE TO REINFORCING STEEL SHALL BE 1 1/2" UNLESS OTHERWISE SHOWN.
- TYPE D SHALL BE USED ONLY AT LOCATIONS SHOWN ON PLANS.
- FOR CONCRETE TRAFFIC BARRIER DELINEATION DETAILS, SEE STD PLAN 903.00.

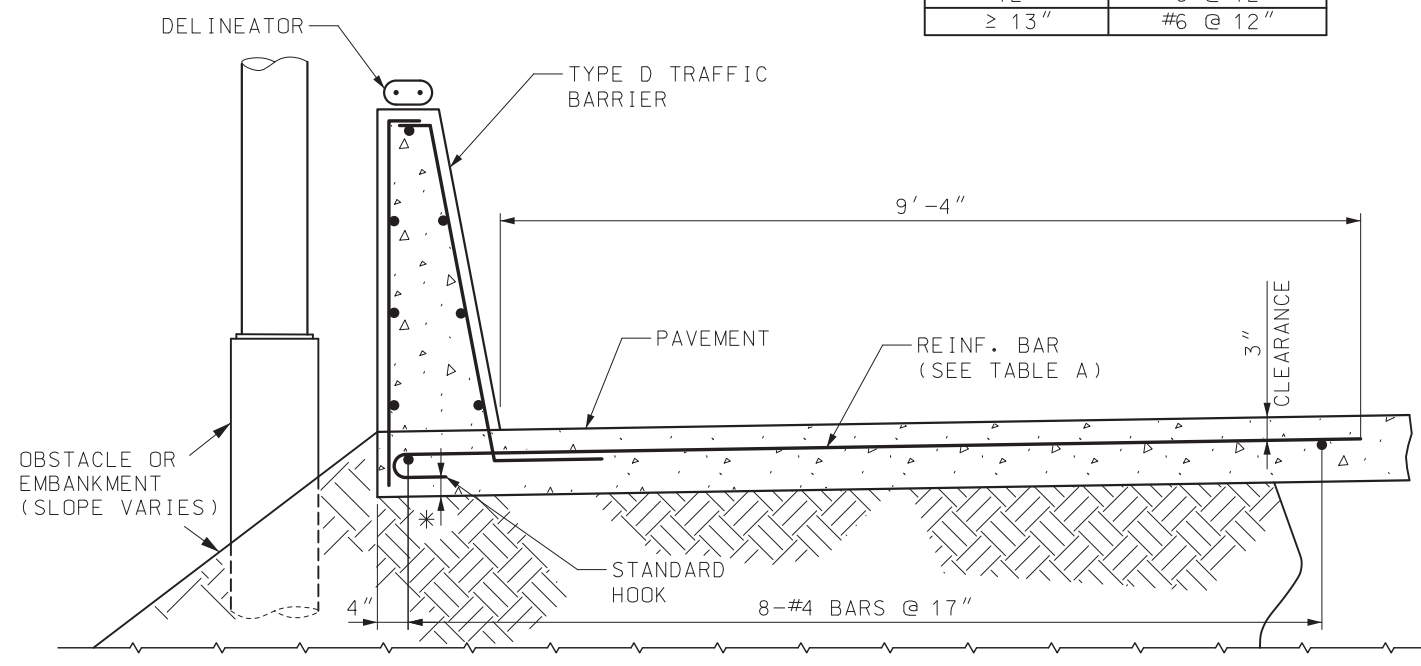
\* TILT TRANSVERSE PAVEMENT REINFORCEMENT HOOKS FROM VERTICAL ALIGNMENT TO MAINTAIN 1 1/2" MINIMUM CLEARANCE.

\*\* SEE ROADWAY PAVEMENT DESIGN.

\*\*\* R1 AND R2 MAY BE REPLACED WITH ALTERNATE (3'-3") R1 AND R2 OR R5 ONLY FOR USE WITH OPTIONAL STIRRUP.



ALTERNATE PART SECTION THROUGH BARRIER WITH OPTIONAL STIRRUP



TYPE D TRAFFIC BARRIER - MOMENT SLAB\*\*

**MISSOURI HIGHWAYS AND TRANSPORTATION COMMISSION**

105 WEST CAPITOL  
JEFFERSON CITY, MO 65102  
1-888-ASK-MODOT (1-888-275-6636)

**PERMANENT CONCRETE TRAFFIC BARRIER**

**TYPE D ATOP MSE WALL AND MOMENT SLAB**

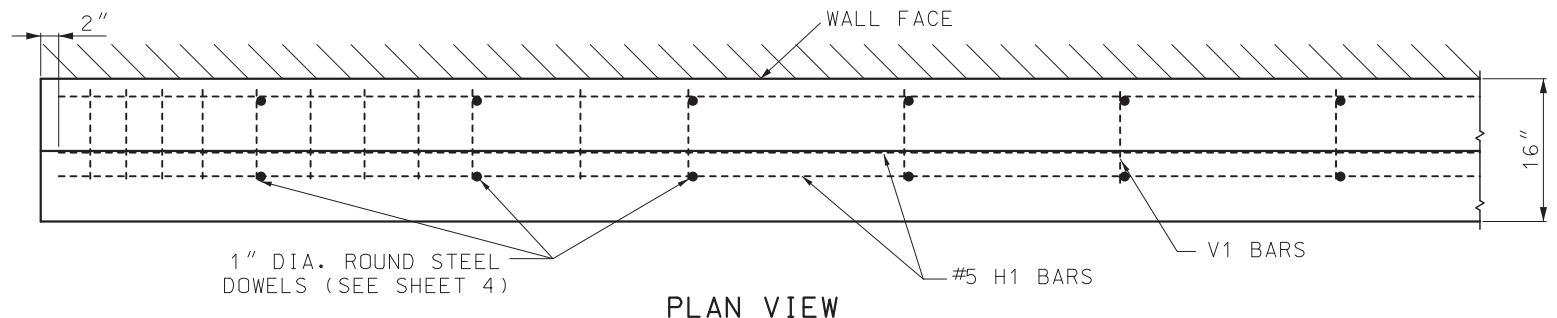
SHEET NO.  
**8 OF 11**

DATE EFFECTIVE: 7/1/2025

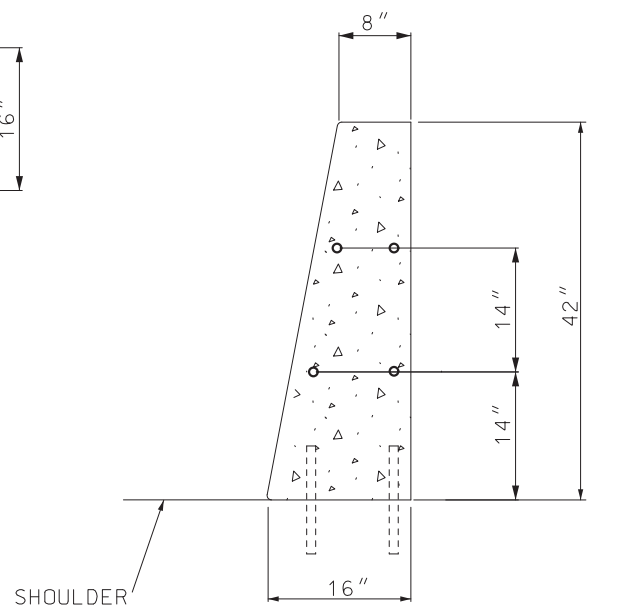
DATE PREPARED: 3/28/2025

**617.10N**

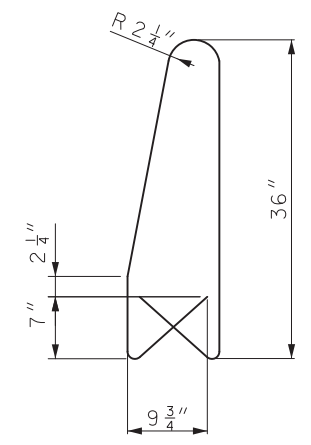




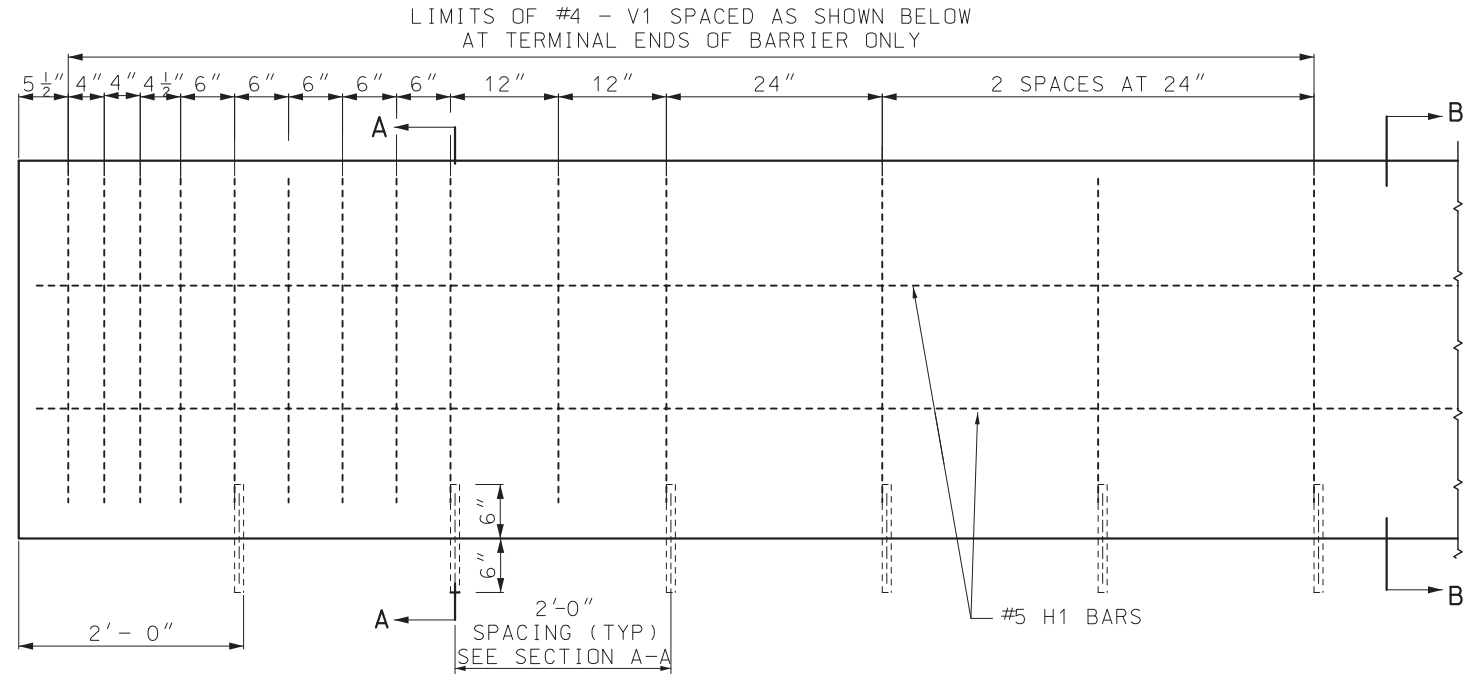
PLAN VIEW



TYPE D TYPICAL SECTION



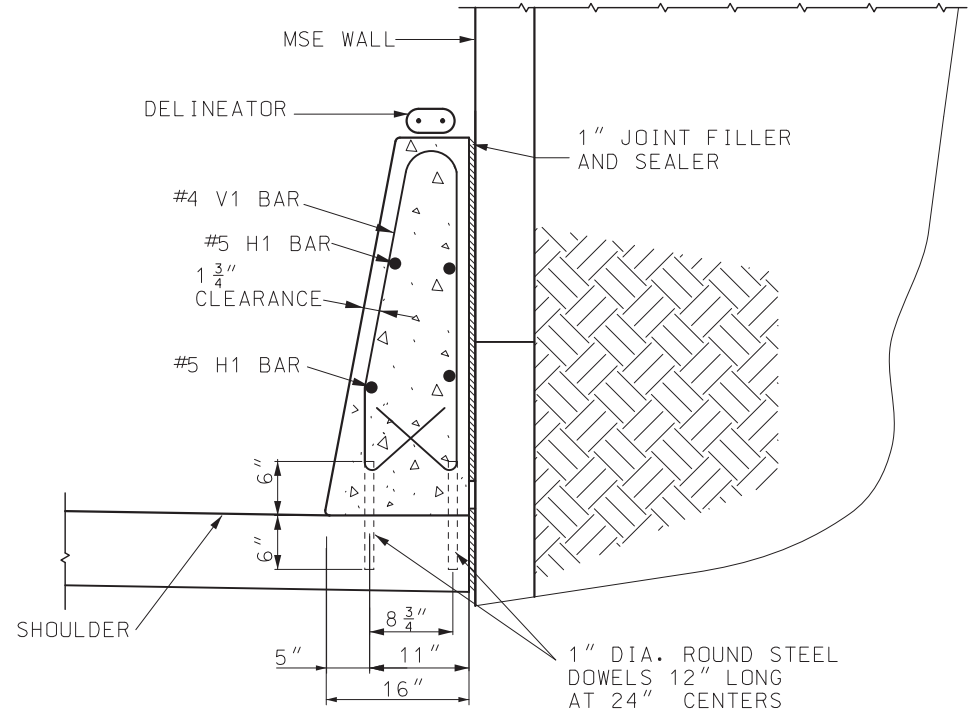
V1 BAR (#4)



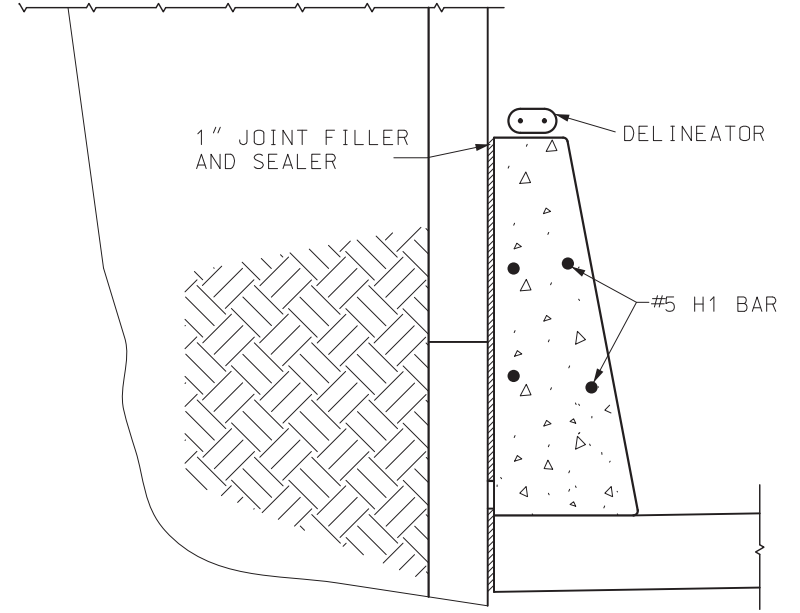
ELEVATION REINFORCING DETAILS

GENERAL NOTES:

- ALL REINFORCEMENT SHALL BE GRADE 60 EPOXY COATED.
- MINIMUM CLEARANCE TO REINFORCING STEEL SHALL BE 1 1/2", UNLESS OTHERWISE SHOWN.
- BAR SPLICES SHALL BE A MINIMUM OF 24 TIMES THE NOMINAL DIAMETER OF THE BAR.
- ANY METHOD DEvised BY THE CONTRACTOR AND APPROVED BY THE ENGINEER THAT WILL ENSURE THE LONGITUDINAL REINFORCING STEEL WILL BE POSITIONED ± 1/2" AS DIMENSIONED WILL BE SATISFACTORY.
- THE CONTRACTOR HAS THE OPTION TO SLIP-FORM THE BARRIER. IN WHICH CASE, ADDITIONAL REINFORCEMENT MAY BE TIED TO THE UPPER TWO-THIRDS OF THE REINFORCING CAGE TO PROVIDE BRACING.
- THIS BARRIER SHALL NOT BE USED TO SUPPORT HIGHWAY LIGHTING POLES.
- THIS BARRIER SHALL NOT BE USED FOR BRIDGE ROADWAY APPLICATIONS.
- SAWED JOINTS SHALL BE SPACED AT 15'-0". SEE OTHER STANDARD PLANS FOR SAWED JOINT DETAIL.
- TYPE D SHALL BE USED ONLY AT LOCATIONS SHOWN ON PLANS.
- #8 REINFORCING BARS WITH AN EPOXY ANCHOR SYSTEM MAY BE SUBSTITUTED FOR SMOOTH 1" DIAMETER ROUND STEEL DOWELS.
- FOR CONCRETE TRAFFIC BARRIER DELINEATION DETAILS, SEE STD PLAN 903.00.



SECTION A-A



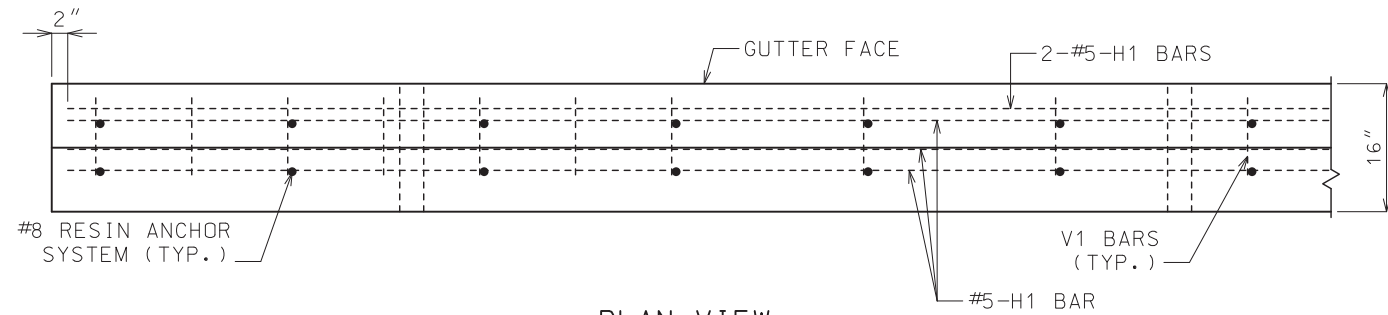
SECTION B-B

**MoDOT** MISSOURI HIGHWAYS AND TRANSPORTATION COMMISSION  
 105 WEST CAPITOL JEFFERSON CITY, MO 65102  
 1-888-ASK-MODOT (1-888-275-6636)

STATE OF MISSOURI  
 MARK E. CROARKIN  
 NUMBER PE-2002016640  
 PROFESSIONAL ENGINEER  
 Mark Croarkin  
 04/08/2025 4:49:39 PM  
 MARK E. CROARKIN - CIVIL  
 MO-PE-2002016640

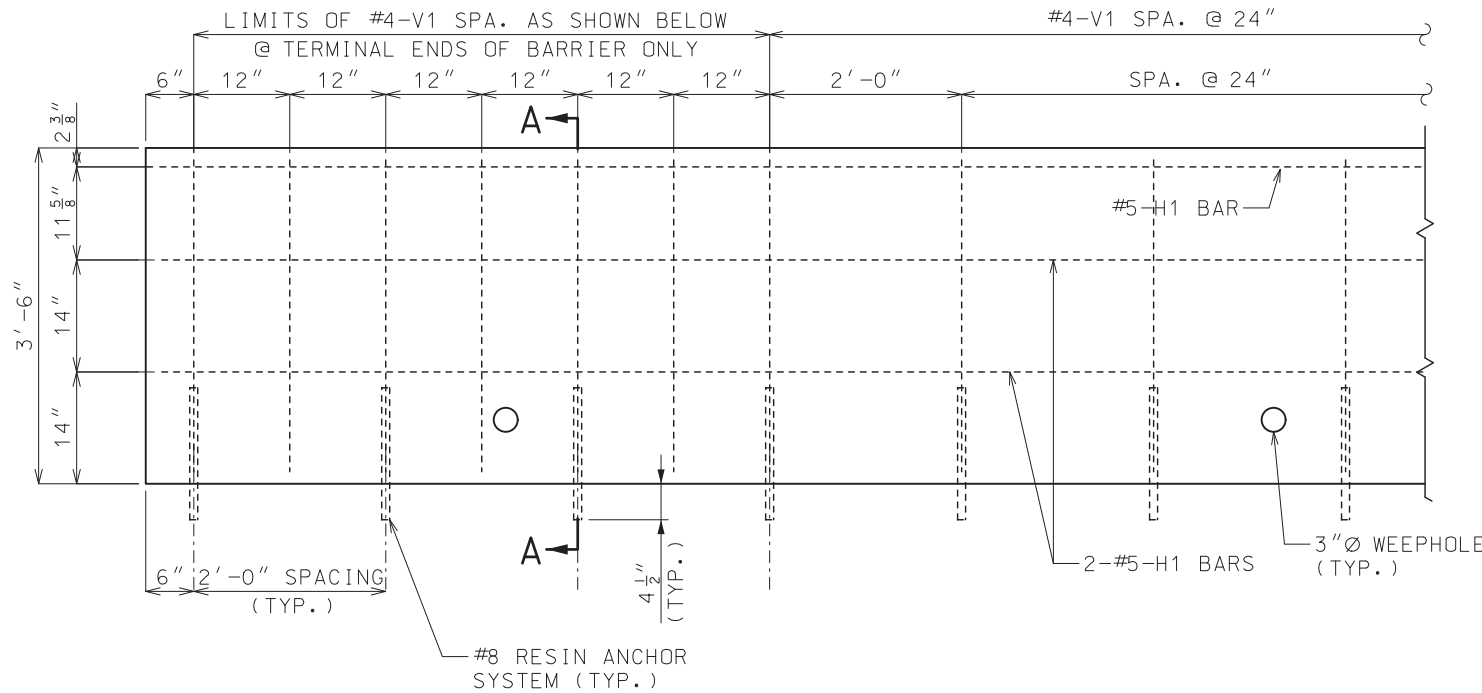
**PERMANENT CONCRETE TRAFFIC BARRIER**  
 TYPE D BESIDE MSE WALL

DATE EFFECTIVE: 7/1/2025	617.10N	SHEET NO. 9 OF 11
DATE PREPARED: 3/28/2025		

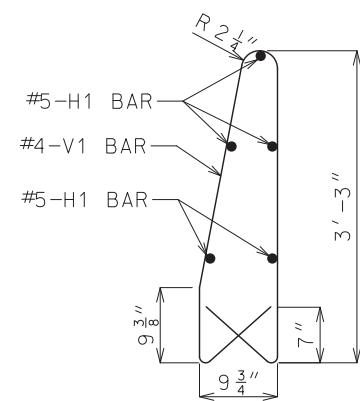


PLAN VIEW

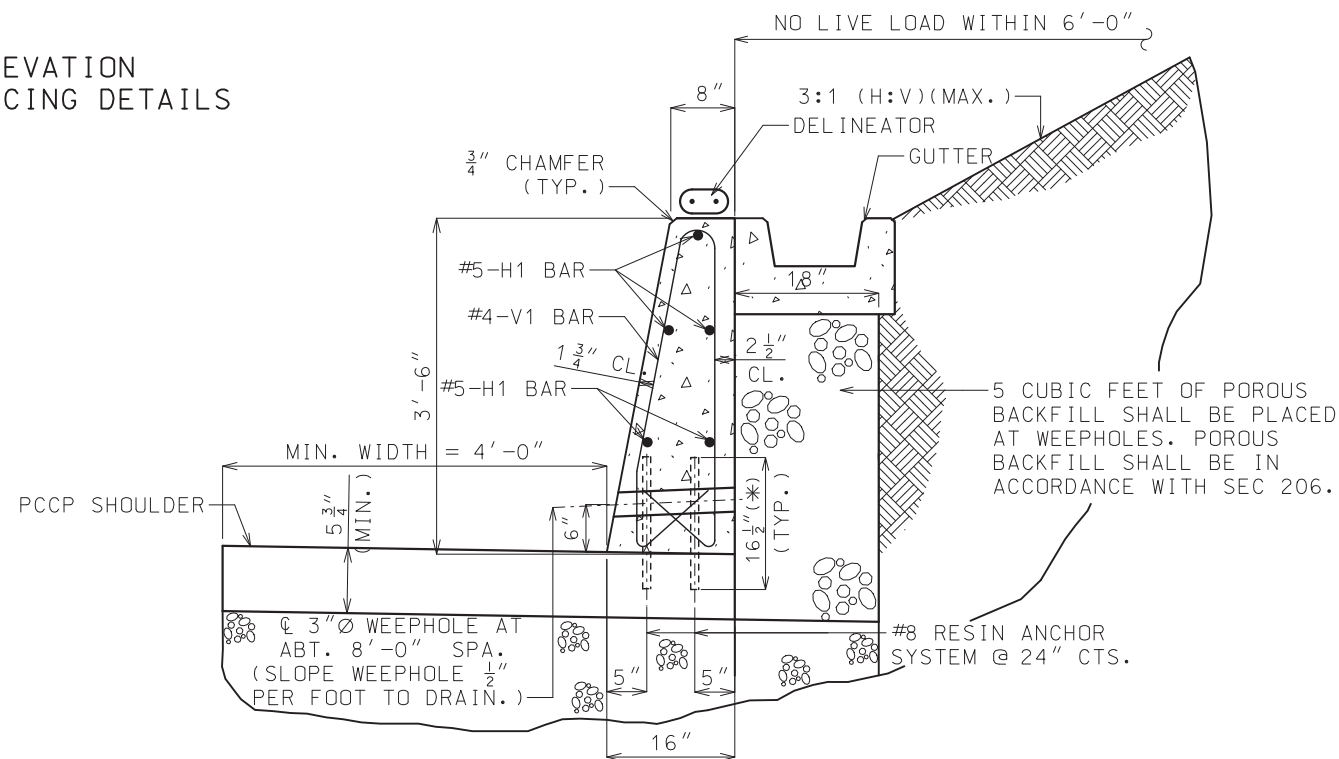
NOTE: GUTTER NOT SHOWN FOR CLARITY.



ELEVATION REINFORCING DETAILS



V1 BAR (#4)



SECTION A-A (FOR SLOPING AND NONSLOPING BACKSLOPE)

(\* ) EMBED ANCHOR 4 1/2" INTO PCCP SHOULDER.

GENERAL NOTES:

CONCRETE SHALL BE CLASS B  $f'c = 4,000$  PSI.

ALL REINFORCEMENT SHALL BE GRADE 60 EPOXY COATED.

ANGLE OF INTERNAL FRICTION,  $\phi_f \geq 30^\circ$  FOR BACKFILL MATERIAL.

MINIMUM CLEARANCE TO REINFORCING STEEL SHALL BE 1 1/2", UNLESS OTHERWISE SHOWN.

BAR SPLICES SHALL BE A MINIMUM OF 24 TIMES THE NOMINAL DIAMETER OR THE BAR.

ANY METHOD DEvised BY THE CONTRACTOR AND APPROVED BY THE ENGINEER THAT WILL ENSURE THE LONGITUDINAL REINFORCING STEEL WILL BE POSITIONED  $\pm 1/2"$  AS DIMENSIONED WILL BE SATISFACTORY.

THE CONTRACTOR HAS THE OPTION TO SLIP-FORM THE BARRIER. IN WHICH CASE, ADDITIONAL REINFORCEMENT MAY BE TIED TO THE UPPER TWO-THIRDS OF THE REINFORCING CAGE TO PROVIDE BRACING.

THIS BARRIER SHALL NOT BE USED TO SUPPORT HIGHWAY LIGHTING POLES.

THIS BARRIER SHALL NOT BE USED FOR BRIDGE ROADWAY APPLICATION.

SAWED JOINTS SHALL BE SPACED AT 15'-0". SEE OTHER STANDARD PLANS FOR SAWED JOINT DETAIL.

TYPE D BARRIER MODIFIED RETAINING WALL WITH NONMOMENT SLAB SHALL BE USED ONLY AT LOCATIONS SHOWN ON PLANS.

FOR CONCRETE TRAFFIC BARRIER DELINEATION DETAILS, SEE STD PLAN 903.00.

RESIN ANCHOR SYSTEM SHALL BE DRILLED IN THE PAVEMENT.

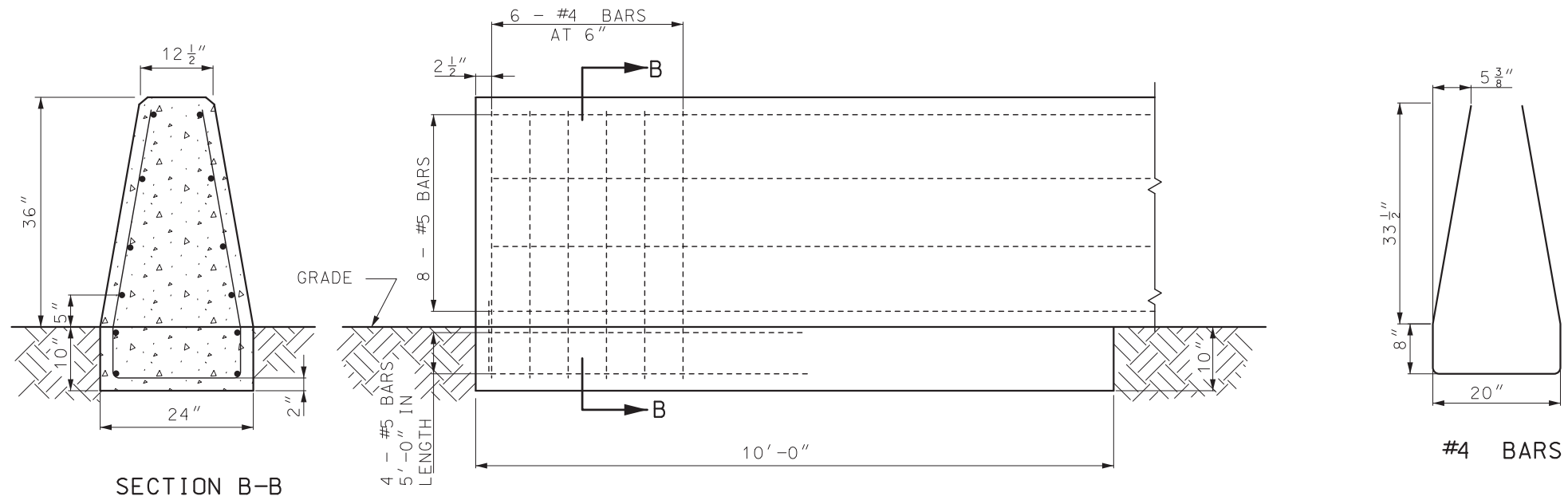
WHEN BARRIER HEIGHT EXCEEDS 42" OR SLOPE EXCEEDS 3:1 (H:V) OR LIVE LOAD IS WITHIN 6'-0", CONTACT BRIDGE DIVISION FOR SPECIAL DESIGN.

**MoDOT** MISSOURI HIGHWAYS AND TRANSPORTATION COMMISSION  
 105 WEST CAPITOL JEFFERSON CITY, MO 65102  
 1-888-ASK-MODOT (1-888-275-6636)

STATE OF MISSOURI  
 MARK E. CROARKIN  
 NUMBER PE-2002016640  
 PROFESSIONAL ENGINEER  
 Mark Croarkin  
 04/08/2025 4:50:11 PM  
 MARK E. CROARKIN - CIVIL  
 MO-PE-2002016640

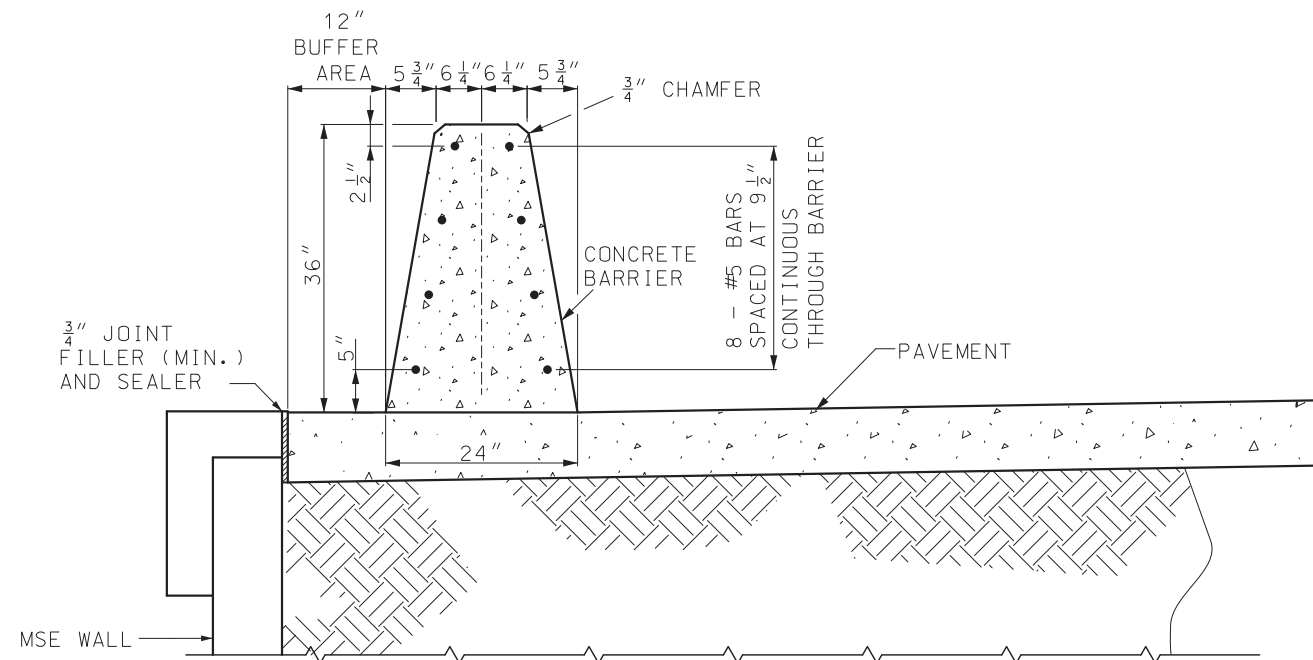
PERMANENT CONCRETE TRAFFIC BARRIER TYPE D AS RETAINING WALL

DATE EFFECTIVE: 7/1/2025	617.10N	SHEET NO. 10 OF 11
DATE PREPARED: 3/28/2025		



SECTION B-B


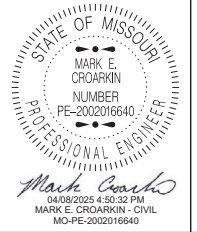
CONCRETE BARRIER END ANCHORAGE ON GRADE



TRAFFIC BARRIER ON TOP OF MSE WALL

GENERAL NOTES:

- ALL REINFORCEMENT SHALL BE GRADE 60 EPOXY COATED.
- MINIMUM CLEARANCE TO REINFORCING STEEL SHALL BE 1 1/2", UNLESS OTHERWISE SHOWN.
- BAR SPLICES SHALL BE A MINIMUM OF 24 TIMES THE NOMINAL DIAMETER OF THE BAR.
- A 12" BUFFER REQUIRED WITHIN THE LIMITS OF THE TRAFFIC BARRIER EXCLUDING THE END ANCHORAGE SECTIONS.
- PAVEMENT SURFACE DIFFERENTIAL SHALL NOT EXCEED 1 1/2".
- FOR CONCRETE TRAFFIC BARRIER DELINEATION DETAILS, SEE STD PLAN 903.00.

 <b>MISSOURI HIGHWAYS AND TRANSPORTATION COMMISSION</b> 105 WEST CAPITOL JEFFERSON CITY, MO 65102 1-888-ASK-MODOT (1-888-275-6636)	
	<p><b>PERMANENT CONCRETE TRAFFIC BARRIER</b> TYPE E ATOP MSE WALL</p>
DATE EFFECTIVE: 7/1/2025 DATE PREPARED: 3/28/2025	<p>617.10N</p>
SHEET NO. 11 OF 11	