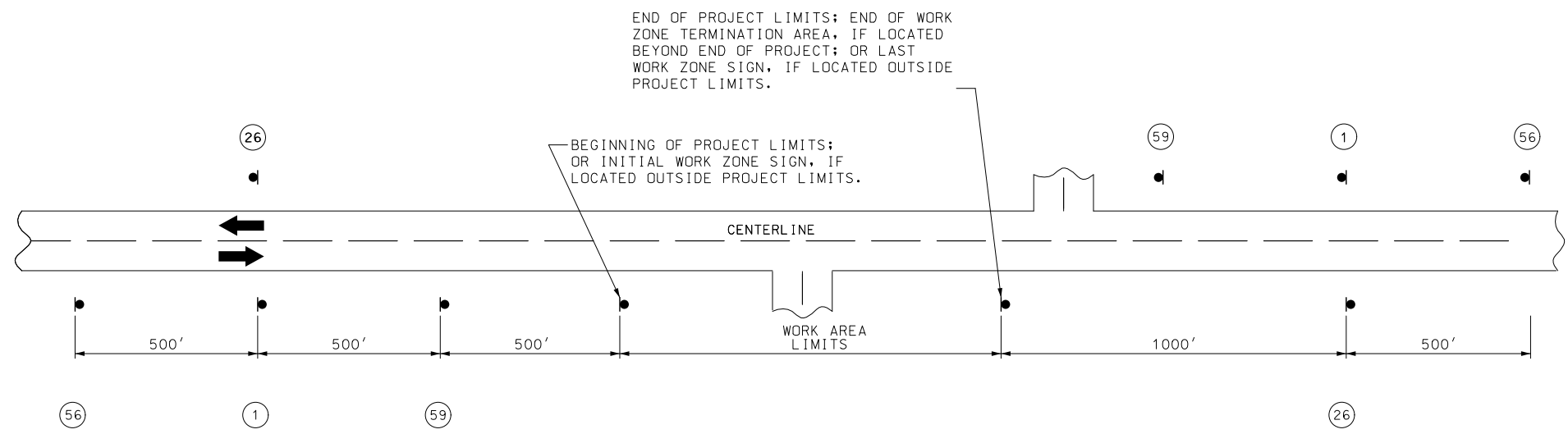
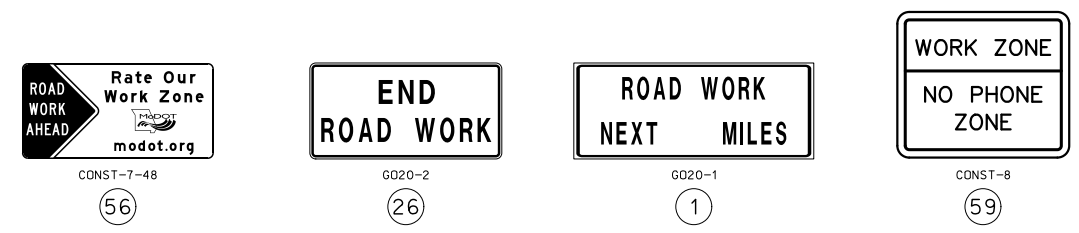


IF A SEAL IS PRESENT ON THIS SHEET IT HAS BEEN ELECTRONICALLY SEALED AND DATED.



NOTES:

- SIGN (1) AND (26) ARE ONLY USED ON PROJECT LENGTHS 2 MILES OR GREATER.
- PROVIDE SIGNS IN EACH DIRECTION ON TWO-WAY HIGHWAY.
- DISTANCE MAY BE ADJUSTED ACCORDING TO FIELD CONDITIONS.



THIS TEMPORARY TRAFFIC CONTROL IS FOR USE ON THE FOLLOWING PAVEMENT TREATMENT PROJECTS AND IS NOT INTENDED FOR USE WHEN ADDITIONAL CONSTRUCTION ITEMS SUCH AS SHOULDER WIDENING, PIPE REPLACEMENT OR EXTENSIONS, GUARDRAIL CONSTRUCTION OR REPAIR, AND/OR SIGN INSTALLATIONS ARE PART OF THE PROJECT:

- ASPHALTIC RESURFACING (SECTIONS 401 AND 402)
- SEAL COAT
- SCRUB SEAL/SAND SEAL

NOT TO SCALE

	<b>MISSOURI HIGHWAYS AND TRANSPORTATION COMMISSION</b> <small>105 WEST CAPITOL JEFFERSON CITY, MO 65102 1-888-ASK-MODOT (1-888-275-6636)</small>
	<p><b>TEMPORARY TRAFFIC CONTROL PLANS</b></p> <p>PAVEMENT TREATMENTS FOR TWO-LANE ROADWAYS</p>
DATE EFFECTIVE: 07/01/2021 DATE PREPARED: 4/29/2021	<p><b>616.20</b></p>
SHEET NO. 1 OF 5	



W020-1  
2

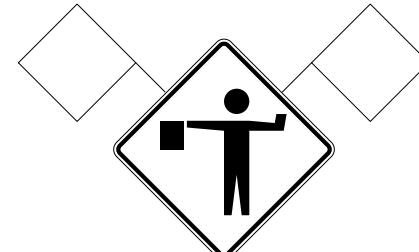


G020-4  
53

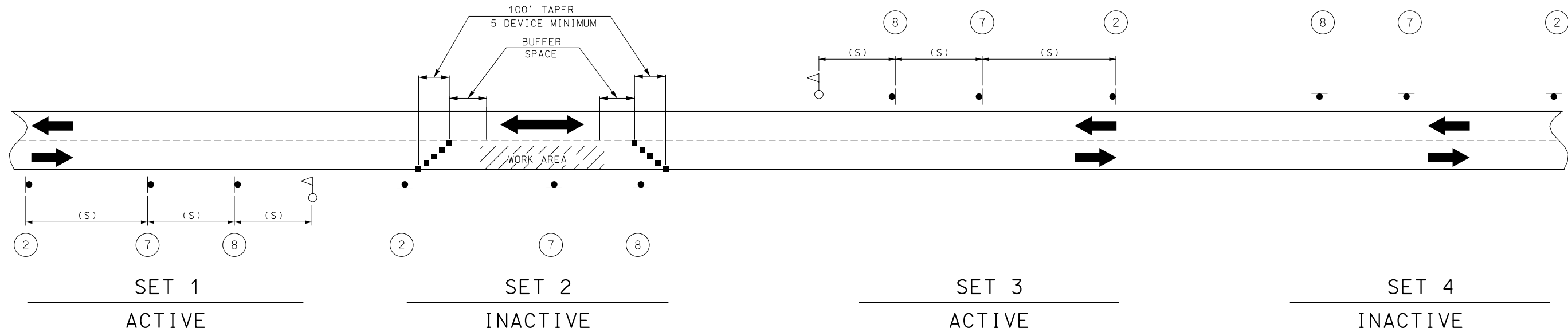
SIGN 53, "PILOT CAR FOLLOW ME" SHALL BE THE CONTRACTOR'S RESPONSIBILITY WHEN IN USE DURING OPERATION.



W020-4  
7



W020-7a  
8



NOTES:

DAYLIGHT FLAGGING OPERATIONS ONLY.

CHANNELIZING DEVICES LOCATED DOWNSTREAM OF THE ONE-LANE, TWO-WAY TAPER ARE OPTIONAL. THESE DEVICES SHOULD BE ELIMINATED WHEN THEIR USE WILL REDUCE THE USABLE LANE WIDTH, INCLUDING ANY ACCEPTABLE SHOULDERS, TO LESS THAN 10' OR WILL SIGNIFICANTLY AFFECT THE RESURFACING OPERATION.

SIGN SETS 1 AND 3 ARE ACTIVE AND (I.E., SIGNS FACE ONCOMING TRAFFIC) SIGN SETS 2 AND 4 ARE INACTIVE (I.E., SIGNS DO NOT FACE EITHER DIRECTION OF TRAFFIC) WHEN THE RESURFACING OPERATION IS LOCATED BETWEEN SIGN SETS 1 AND 3.

WHEN SIGN SETS 2 AND 4 ARE ACTIVE, SIGN SETS 1 AND 3 BECOME INACTIVE AND ARE ADVANCED TO BECOME SETS 2 AND 4 WITH SIGN LEGENDS TURNED AWAY FROM BOTH DIRECTIONS OF TRAFFIC. WHEN THE RESURFACING OPERATION ADVANCES TO BETWEEN SIGN SETS 2 AND 4, SIGN SETS 2 AND 4 BECOME ACTIVE (I.E., NEW SIGN SETS 1 AND 3) AND SIGN SETS 1 AND 3 ADVANCED IN THE DIRECTION OF THE OPERATION (I.E., NEW SIGN SETS 2 AND 4).

WHEN TEMPORARY RUMBLE STRIPS ARE USED, REFER TO EPG FIGURE 616.6.87.1 FOR DISTANCES AND SPACING.

■ - CHANNELIZERS

◁ - FLAGGER

SPEED	SIGN SPACING (FT.) (1)
PERMANENT POSTED (MPH)	NON-DIVIDED HIGHWAYS (S)
0-35	200
40-45	350
50-55	500
60-70	1000

NOTES:

(1) SPACING BETWEEN SIGNS, BETWEEN LAST SIGN AND FLAGGER, BEGINNING OF TAPER OR SIGNED CONDITION.

SPACINGS MAY BE ADJUSTED AS NECESSARY TO MEET FIELD CONDITIONS.

PERMANENT POSTED SPEED LIMIT (MPH)	BUFFER SPACE LENGTH (FT)
0 - 35	280
40 - 45	400
50 - 55	560
60 - 70	840

NOT TO SCALE

**MoDOT** MISSOURI HIGHWAYS AND TRANSPORTATION COMMISSION  
 105 WEST CAPITOL JEFFERSON CITY, MO 65102  
 1-888-ASK-MODOT (1-888-275-6636)

STATE OF MISSOURI  
 TRAVIS D. KOESTNER  
 NUMBER PE-30042  
 PROFESSIONAL ENGINEER

THIS SHEET HAS BEEN SIGNED, SEALED AND DATED ELECTRONICALLY.

**TEMPORARY TRAFFIC CONTROL PLANS**  
 PAVEMENT TREATMENTS FOR TWO-LANE ROADWAYS

DATE EFFECTIVE: 07/01/2021  
 DATE PREPARED: 5/12/2021

**616.20**

SHEET NO. 2 OF 5

SPEED	SIGN SPACING (FT.)
PERMANENT POSTED (MPH)	NON-DIVIDED HIGHWAYS (S)
0-35	200
40-45	350
50-55	500
60-70	1000

DISTANCE MAY BE ADJUSTED ACCORDING TO FIELD CONDITIONS.

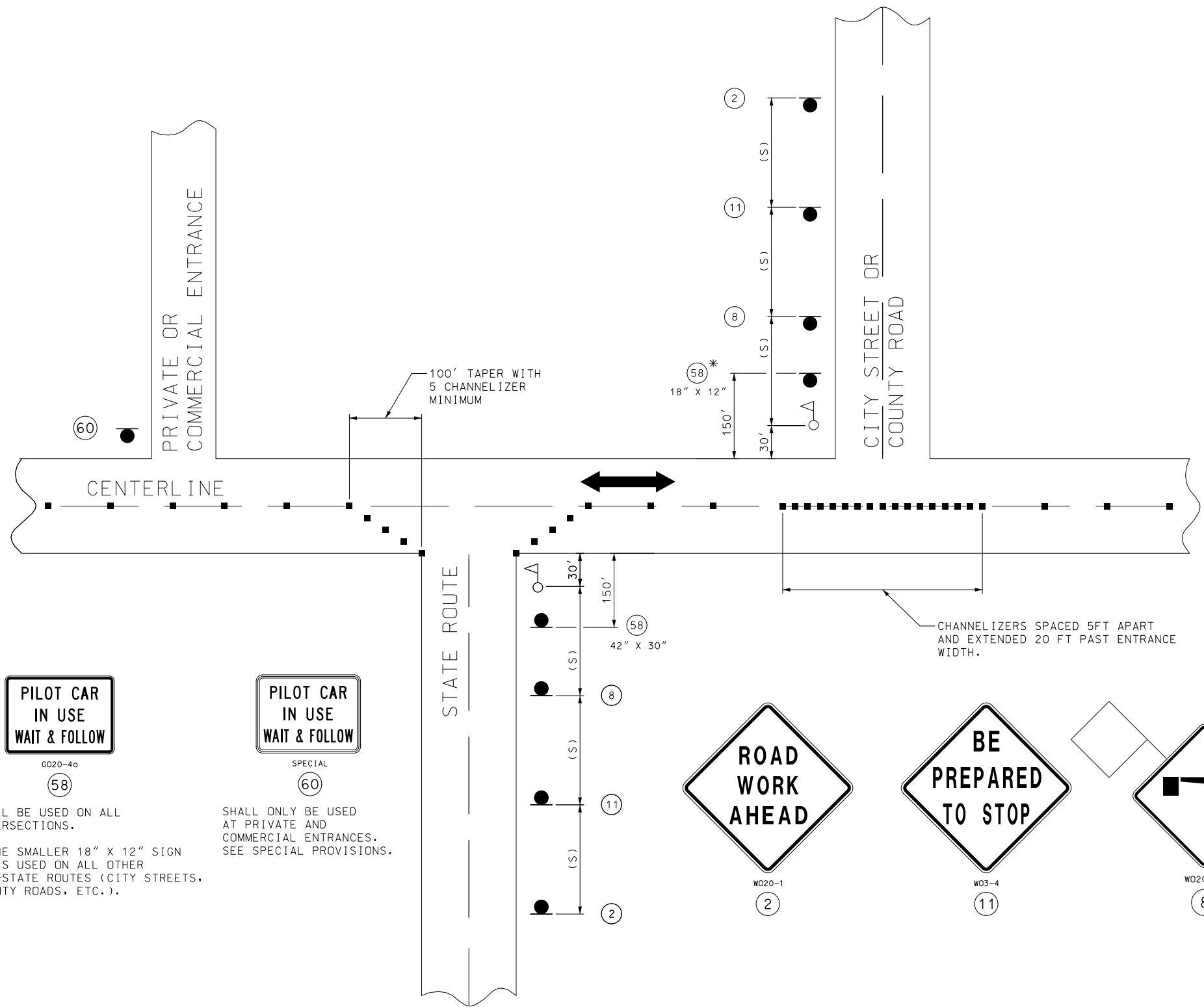
NOTES:  
WARNING SIGNS SHALL BE ERECTED AT EACH INTERSECTION WITH ANOTHER STATE HIGHWAY WITHIN THE WORK ZONE.

ADDITIONAL WARNING SIGNS SHALL BE ERECTED AT OTHER INTERSECTIONS WITHIN THE WORK ZONE, AS DIRECTED BY THE ENGINEER.

■ - CHANNELIZERS ( AS SPECIFIED )

△ - FLAGGER

NOT TO SCALE



SHALL BE USED ON ALL INTERSECTIONS.

\* THE SMALLER 18" X 12" SIGN 58 IS USED ON ALL OTHER NON-STATE ROUTES (CITY STREETS, COUNTY ROADS, ETC.).

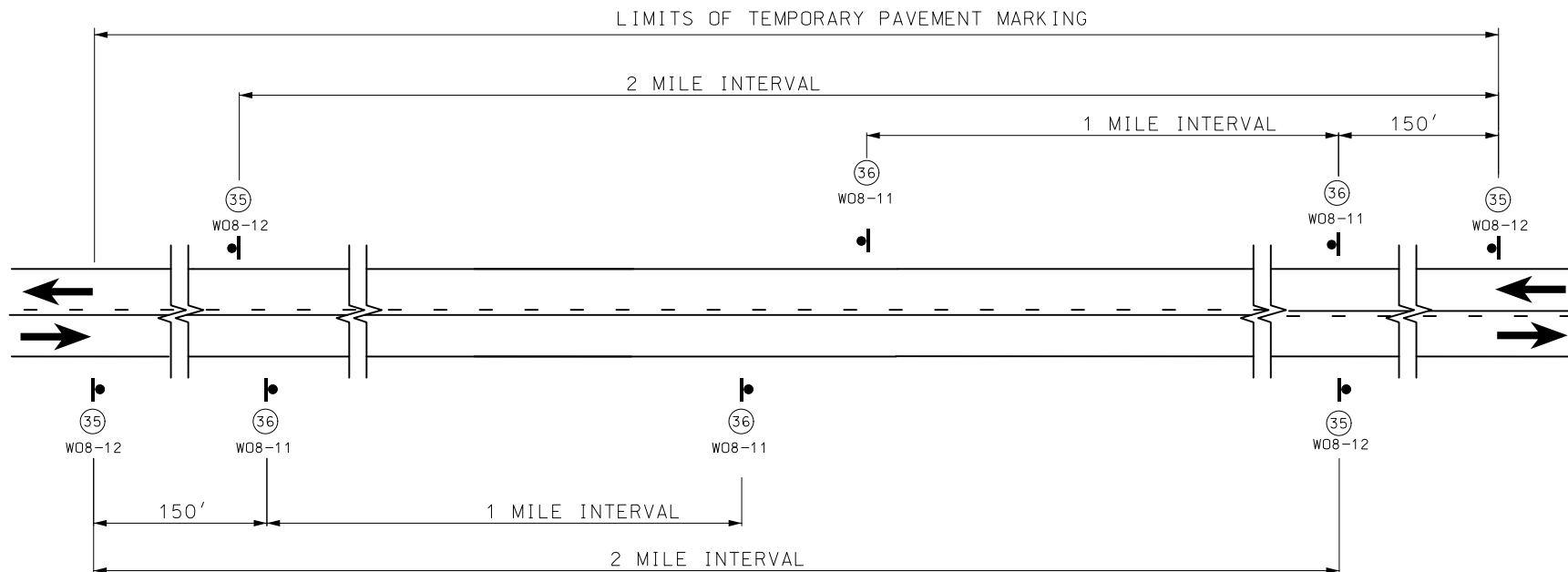
SHALL ONLY BE USED AT PRIVATE AND COMMERCIAL ENTRANCES. SEE SPECIAL PROVISIONS.

SIDE ROADS ENTERING WORK ZONES

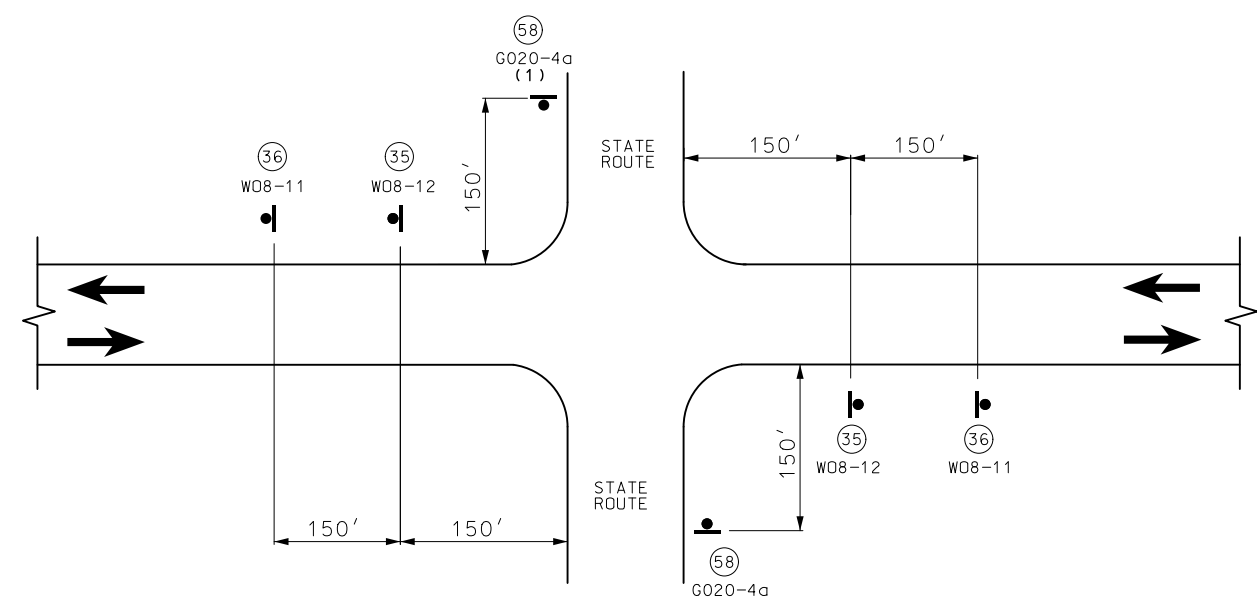
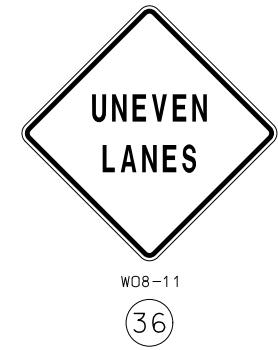
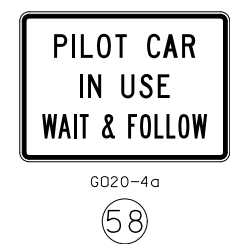
	<b>MISSOURI HIGHWAYS AND TRANSPORTATION COMMISSION</b> 105 WEST CAPITOL JEFFERSON CITY, MO 65102 1-888-ASK-MODOT (1-888-275-6636)	
	<b>TEMPORARY TRAFFIC CONTROL PLANS</b> PAVEMENT TREATMENTS FOR TWO-LANE ROADWAYS	
	DATE EFFECTIVE: 07/01/2021 DATE PREPARED: 4/29/2021	<b>616.20</b> SHEET NO. 3 OF 5

IF A SEAL IS PRESENT ON THIS SHEET IT HAS BEEN ELECTRONICALLY SEALED AND DATED.

NOT TO SCALE



SIGN SPACING AND TEMPORARY STRIPING FOR MAINLINE



SIGN SPACING AT STATE ROUTE INTERSECTIONS SHOWING TEMPORARY STRIPING FOR MAINLINE

NOTES:

SIGN (35) AND TEMPORARY RAISED PAVEMENT MARKING (SEE STANDARD PLAN 620.10) INSTALLED WHERE CENTERLINE STRIPING HAS BEEN COVERED OR REMOVED. SIGNS ARE TO REMAIN IN PLACE UNTIL THE PERMANENT CENTERLINE PAVEMENT MARKINGS ARE IN PLACE. SIGNS SHALL BE COVERED OR REMOVED WHEN PAVEMENT CENTERLINE MARKING HAS BEEN INSTALLED.

SIGN (35) IS PLACED AT APPROXIMATELY TWO-MILE INTERVALS AND AT STATE ROUTE JUNCTIONS. WHEN THE INSTALLATION AT A JUNCTION IS WITHIN ONE-EIGHTH MILE OF THE NORMAL MAINLINE SIGN (35), THE LATTER MAY BE ELIMINATED.

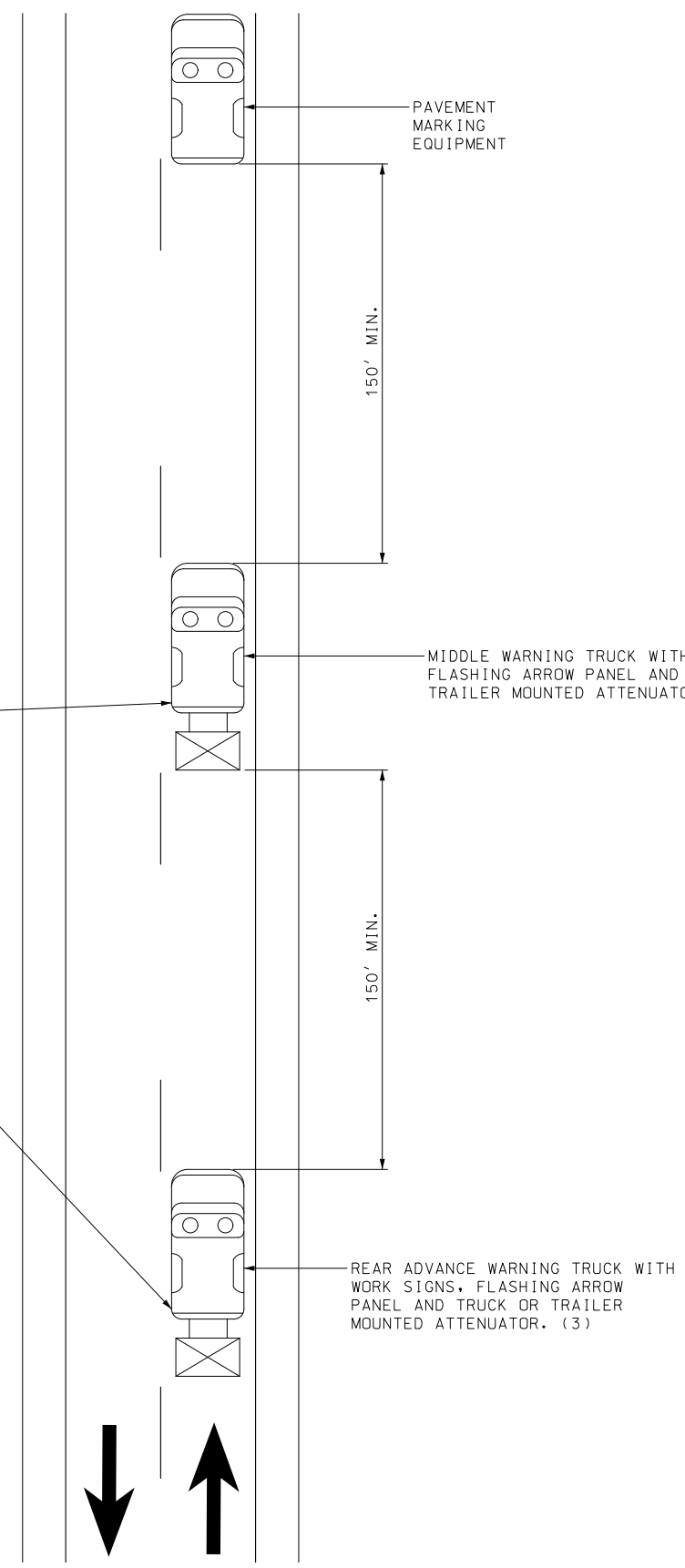
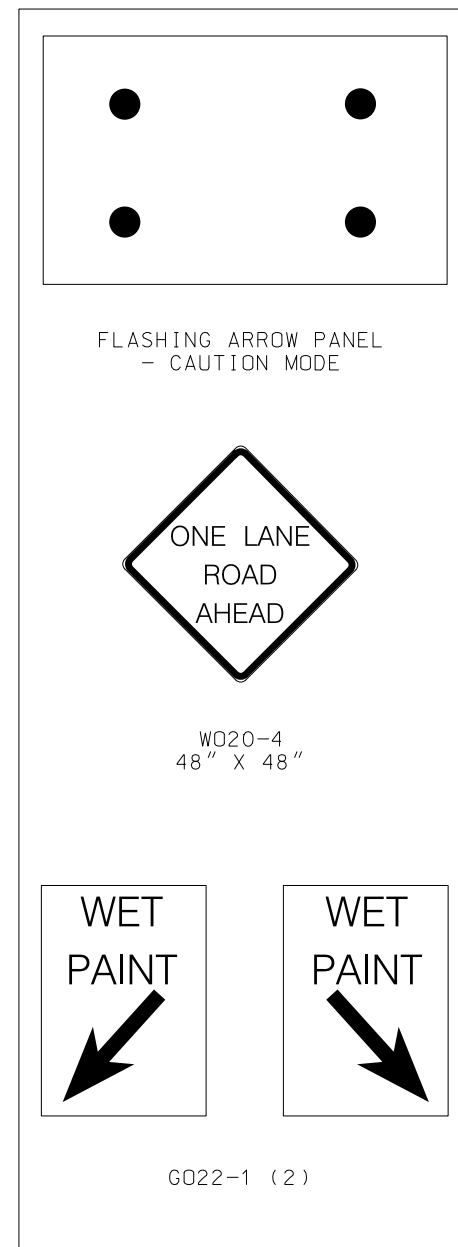
ALL SIGNS SHALL BE POST MOUNTED AND IN ACCORDANCE WITH STANDARD PLAN 616.10 AND 903.03.

SEE STANDARD PLAN 620.10 FOR ALL TEMPORARY PAVEMENT MARKING.

		<b>MISSOURI HIGHWAYS AND TRANSPORTATION COMMISSION</b>	
		105 WEST CAPITOL JEFFERSON CITY, MO 65102 1-888-ASK-MODOT (1-888-275-6636)	
	<b>TEMPORARY TRAFFIC CONTROL PLANS</b>		
	PAVEMENT TREATMENTS FOR TWO-LANE ROADWAYS		
DATE EFFECTIVE: 07/01/2021 DATE PREPARED: 4/29/2021	<b>616.20</b>	SHEET NO. <b>4 OF 5</b>	

IF A SEAL IS PRESENT ON THIS SHEET IT HAS BEEN ELECTRONICALLY SEALED AND DATED.

NOT TO SCALE



NOTES:

UPON APPROVAL OF THE ENGINEER, THE CONTRACTOR MAY PROVIDE ADDITIONAL PROTECTIVE TRUCK EQUIPPED WITH PROPER WARNING DEVICES.

PROTECTIVE TRUCK AND WORK VEHICLES SHALL DISPLAY HIGH-INTENSITY ROTATING, FLASHING, OSCILLATING, OR STROBE LIGHTS.

VEHICLE HAZARD WARNING SIGNALS SHALL NOT BE USED INSTEAD OF THE VEHICLE'S HIGH-INTENSITY ROTATING, FLASHING, OSCILLATING, OR STROBE LIGHTS.

FLASHING ARROW PANELS SHALL BE INCIDENTAL TO TRUCK MOUNTED ATTENUATORS, WHEREVER USED. NO ADDITIONAL PAYMENT SHALL BE MADE.

(1) TRUCK IS OPTIONAL ON TWO-LANE UNDIVIDED HIGHWAYS IF SIGNING AND ARROW BOARD IS MOUNTED ON THE PAVEMENT MARKING EQUIPMENT.

(2) WET PAINT SIGNS ARE INSTALLED TO INDICATE THE SIDE IN WHICH THE PAVEMENT MARKING MATERIAL IS BEING APPLIED. AT THE CONTRACTOR'S OPTION, A FRONT FACING WET PAINT SIGN MAY BE INSTALLED ON THE LEFT SIDE OF THE PAVEMENT MARKING EQUIPMENT.

(3) REAR ADVANCE WARNING TRUCK IS POSITIONED AT THE NO TRACK POINT OF THE PAVEMENT MARKING MATERIAL, OR VERTICAL OR HORIZONTAL CURVES THAT RESTRICT SIGHT DISTANCE, OR SPACING SHOWN.

CENTERLINE/EDGELINE STRIPING ON TWO-LANE HIGHWAYS

 <b>MISSOURI HIGHWAYS AND TRANSPORTATION COMMISSION</b> 105 WEST CAPITOL JEFFERSON CITY, MO 65102 1-888-ASK-MODOT (1-888-275-6636)	
	<b>TEMPORARY TRAFFIC CONTROL PLANS</b> PAVEMENT TREATMENTS FOR TWO-LANE ROADWAYS
DATE EFFECTIVE: 07/01/2021 DATE PREPARED: 4/29/2021	<b>616.20</b>
SHEET NO. <b>5 OF 5</b>	

IF A SEAL IS PRESENT ON THIS SHEET IT HAS BEEN ELECTRONICALLY SEALED AND DATED.