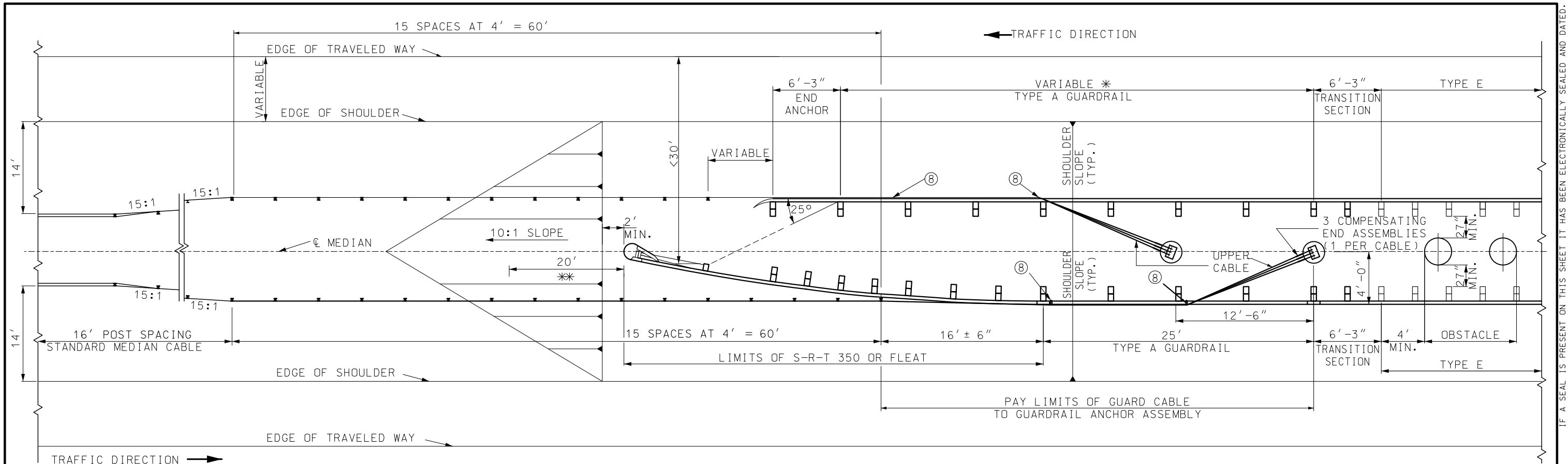


GENERAL NOTES:
 IN THE EVENT THE NORMAL 16' POST SPACING WOULD PLACE A POST ON A DROP INLET, THE SPACING OF THE TWO POSTS IMMEDIATELY PRECEDING THE INLET SHALL BE REDUCED SUCH THAT THE FOLLOWING POST CLEARS THE INLET. EACH SUBSEQUENT POST SHALL BE SPACED AT 16'. IN NO CASE SHALL THE SPACING EXCEED 16'.
 IN THE EVENT A LONGITUDINAL MEDIAN PIPE IS ENCOUNTERED THE CABLE SHALL BE PLACED PARALLEL TO THE PIPE AT A MINIMUM OFFSET OF 12". THE OFFSET SHALL BE ACHIEVED BY A MINIMUM 16:1 TAPER ON THE UPSTREAM AND DOWNSTREAM END OF THE PIPE.
 FOR SECTION A-A AND DETAIL B, SEE SHEET 4 OF 7.
 FOR GUARD CABLE DELINEATION DETAILS SEE STD PLAN 903.03.

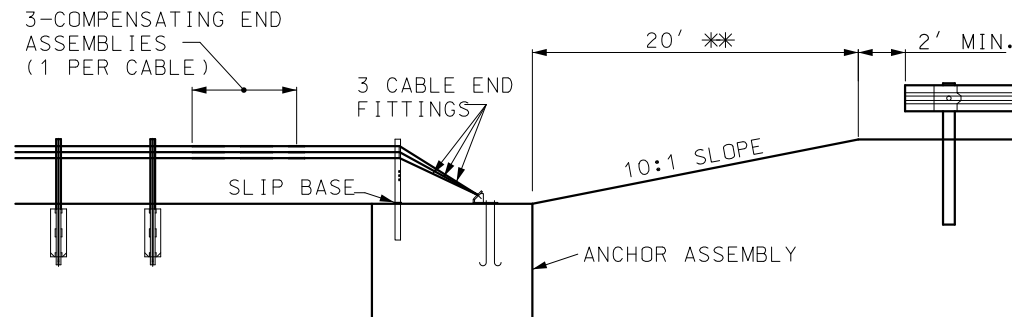
MISSOURI HIGHWAYS AND TRANSPORTATION COMMISSION 105 WEST CAPITOL JEFFERSON CITY, MO 65102 1-888-ASK-MODOT (1-888-275-6636)	
	THREE-STRAND GUARD CABLE MEDIAN APPLICATION
DATE EFFECTIVE: 04/01/2021 DATE PREPARED: 1/27/2021	SHEET NO. 1 OF 7 606.41M

IF A SEAL IS PRESENT ON THIS SHEET IT HAS BEEN ELECTRONICALLY SEALED AND DATED.



GUARD CABLE TO GUARDRAIL TRANSITION AT MEDIAN OBSTACLE

- * VARY LENGTH TO ACHIEVE 25° DEFLECTION TO SECOND POST OF S-R-T 350 OR FLEAT.
- ** IF GUARD CABLE IS USED WITH BULLNOSE GUARDRAIL SYSTEM, OR A CRASHWORTHY END TERMINAL ON A MEDIAN LESS THAN 60' IN WIDTH, THE CABLE ANCHORAGE SHALL BE PLACED ON THE MEDIAN CENTERLINE 20' FROM THE NOSE OF THE CRASHWORTHY END TERMINAL OR BULLNOSE GUARDRAIL SYSTEM.



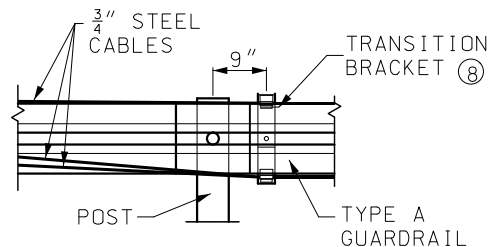
PROFILE OF TRANSITION AT MEDIAN OBSTACLE WITH BULLNOSE OR IN A MEDIAN NARROWER THAN 60'

GENERAL NOTES:

WHEN GUARD CABLE IS LOCATED ALONG THE MEDIAN CENTERLINE NEAR A BRIDGE END OR CONCRETE BARRIER, IT SHALL BE ANCHORED BEHIND THE GUARDRAIL ASSEMBLY WITH THE GUARD CABLE ANCHOR ASSEMBLY. THE GUARD CABLE ANCHOR SHALL BE CONSTRUCTED SO THAT IT IS PROTECTED BY THE GUARDRAIL.

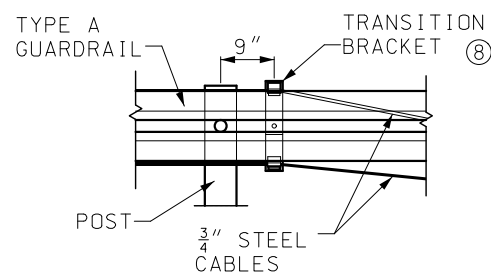
THIS DRAWING DEPICTS OPTIONS FOR THE ATTACHMENT OF GUARD CABLE TO GUARDRAIL. IT DOES NOT INDICATE THAT TWO RUNS OF CABLE ARE REQUIRED.

SUITABLE DRAINAGE MUST BE PROVIDED WHEN MEDIAN GRADING IMPEDES NORMAL FLOW.

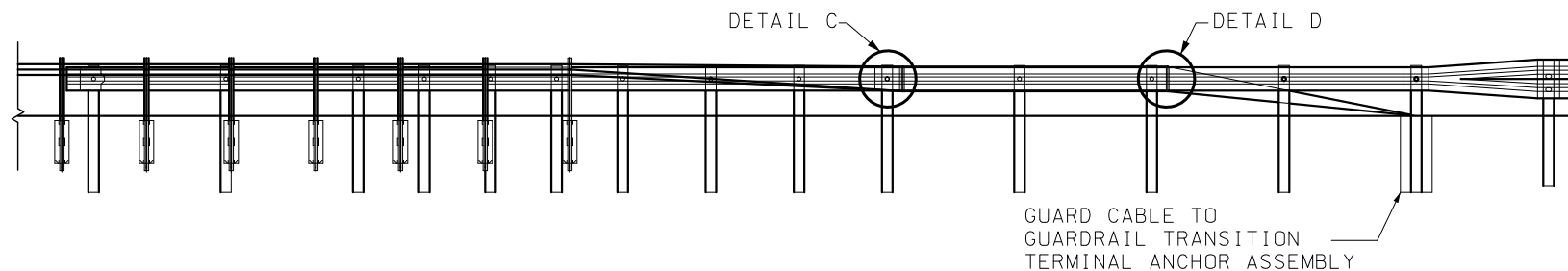


DETAIL C

FOR DETAIL Ⓢ SEE SHEET 6 OF 7.



DETAIL D



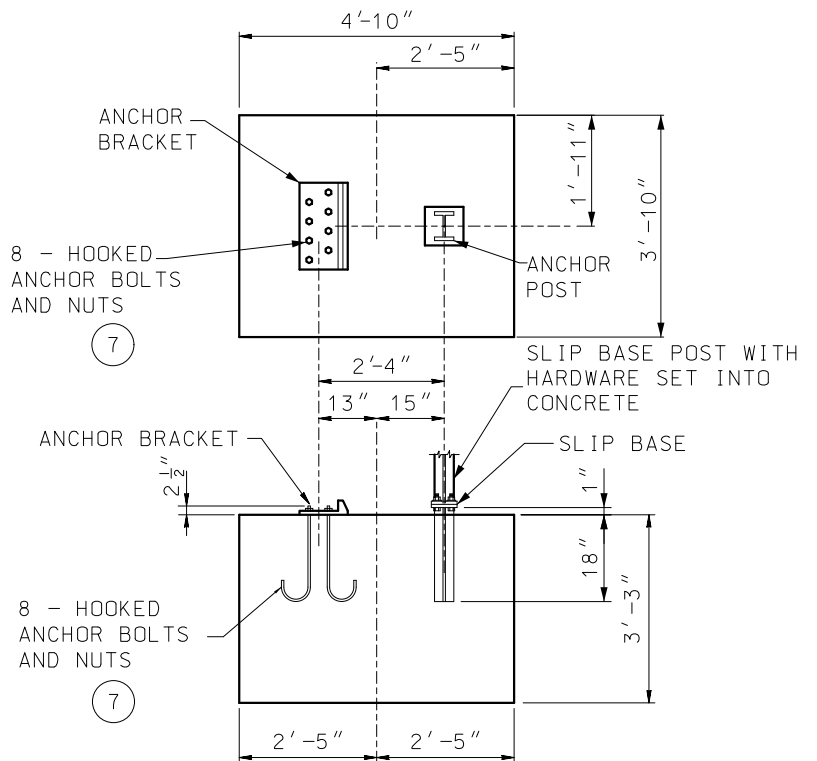
TYPICAL GUARD CABLE TO GUARDRAIL TRANSITION ELEVATION

	MISSOURI HIGHWAYS AND TRANSPORTATION COMMISSION	
	105 WEST CAPITOL JEFFERSON CITY, MO 65102 1-888-ASK-MODOT (1-888-275-6636)	
	THREE-STRAND GUARD CABLE	
	DATE EFFECTIVE: 04/01/2021 DATE PREPARED: 1/27/2021	606.41M

IF A SEAL IS PRESENT ON THIS SHEET IT HAS BEEN ELECTRONICALLY SEALED AND DATED.

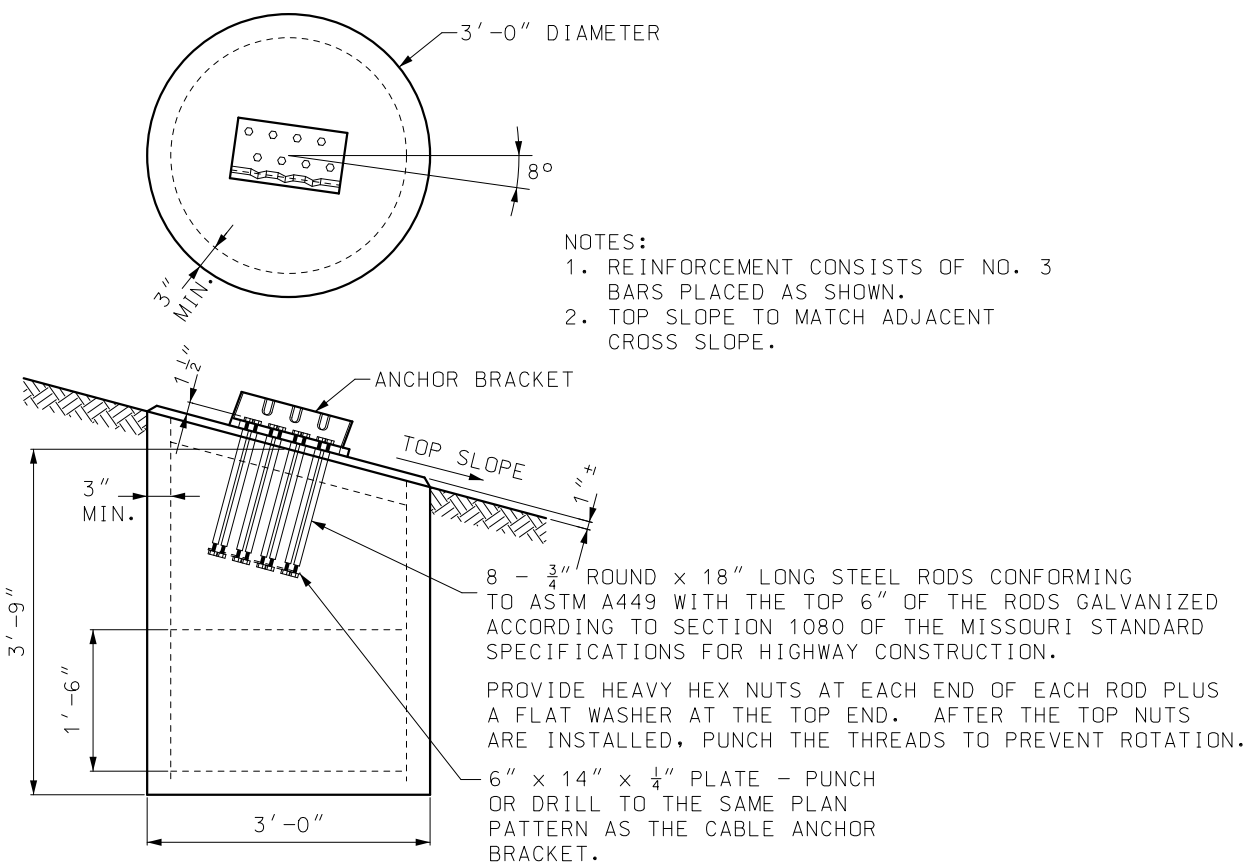
IF A SEAL IS PRESENT ON THIS SHEET IT HAS BEEN ELECTRONICALLY SEALED AND DATED.

STANDARDIZED HARDWARE	
①	WIRE ROPE
②	CABLE END FITTING
③	COMPENSATING CABLE END ASSEMBLY
④	ANCHOR BRACKET
⑤	U-BOLT CABLE CLIPS
⑥	CABLE HOOK BOLT AND NUT
⑦	HOOKED ANCHOR BOLT AND NUTS
⑧	CABLE TRANSITION BRACKET



MEDIAN AND ROADSIDE CABLE

- NOTES:
- PLACE ANCHORS SO THE TOPS ARE LEVEL; WARP SLOPE TO FIT.
 - THE CONCRETE ANCHOR BLOCK DOES NOT REQUIRE REINFORCEMENT.



GUARD CABLE TO GUARDRAIL TRANSITION

- NOTES:
- REINFORCEMENT CONSISTS OF NO. 3 BARS PLACED AS SHOWN.
 - TOP SLOPE TO MATCH ADJACENT CROSS SLOPE.

8 - 3/4" ROUND x 18" LONG STEEL RODS CONFORMING TO ASTM A449 WITH THE TOP 6" OF THE RODS GALVANIZED ACCORDING TO SECTION 1080 OF THE MISSOURI STANDARD SPECIFICATIONS FOR HIGHWAY CONSTRUCTION.

PROVIDE HEAVY HEX NUTS AT EACH END OF EACH ROD PLUS A FLAT WASHER AT THE TOP END. AFTER THE TOP NUTS ARE INSTALLED, PUNCH THE THREADS TO PREVENT ROTATION.

GENERAL NOTES:

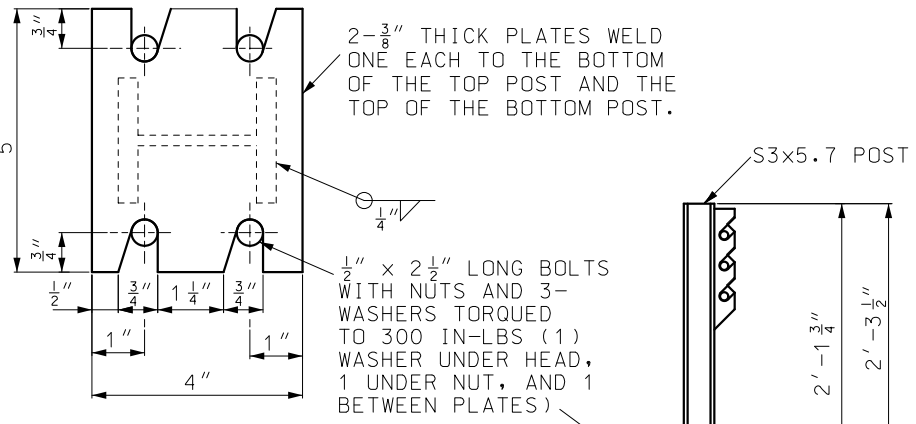
FOR ARRANGEMENT OF SPRING AND COMPENSATING CABLE END ASSEMBLIES AND TURNBUCKLE CABLE END ASSEMBLIES, THE FOLLOWING CRITERIA SHALL APPLY: LENGTH OF CABLE RUNS TO 1000' - USE COMPENSATING CABLE END ASSEMBLY ON ONE END AND THE TURNBUCKLE CABLE END ASSEMBLY ON THE OTHER END OF EACH INDIVIDUAL CABLE. FOR LENGTHS LONGER THAN 1000' AND UP TO AND INCLUDING 2000' - USE COMPENSATING CABLE END ASSEMBLY ON EACH END OF THE INDIVIDUAL CABLE.

PRIOR TO FINAL ACCEPTANCE BY THE ENGINEER, THE FOLLOWING PROCEDURES SHALL BE USED TO TIGHTEN THE TURNBUCKLES. DEPENDING ON THE TEMPERATURE AT THE TIME OF THE ADJUSTMENT IN ACCORDANCE WITH THE FOLLOWING TABLE:

TEMPERATURE (°F)	SPRING COMPRESSION FROM UNLOADED POSITION IN EACH SPRING
120 TO 100	1"
99 TO 80	1 1/2"
79 TO 60	2"
59 TO 40	2 1/2"
39 TO 20	3"
19 TO 0	3 1/2"
-1 TO -20	4"

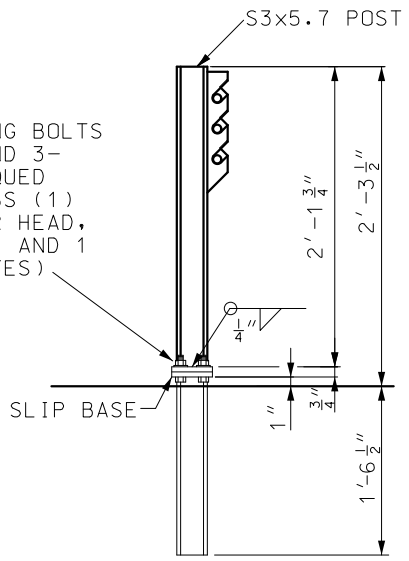
THE SPECIFICATIONS AND DIMENSIONS OF ALL HARDWARE AND FITTINGS SHALL COMPLY WITH AASHTO-AGC-ARTBA JOINT COMMITTEE TASK FORCE 13 REPORT, A GUIDE TO STANDARDIZED HIGHWAY BARRIER HARDWARE.

TERMINAL ANCHOR ASSEMBLY

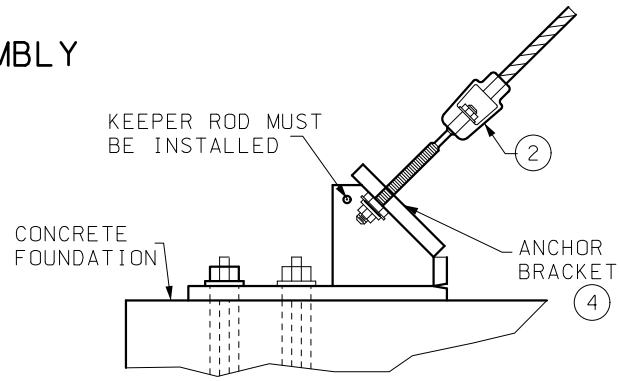


SLIP BASE PLATE

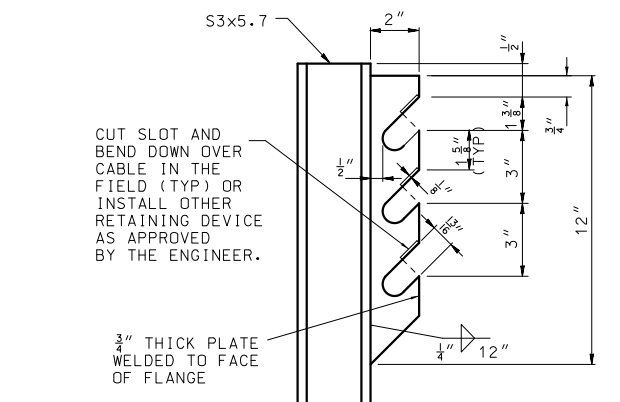
- NOTES:
- LINE POST CABLE SPACING SHALL BE TRANSITIONED TO 3" BETWEEN THE TWO LINE POSTS IMMEDIATELY PRECEDING THE ANCHOR POST.
 - CABLES PLACED ON BOTH POST FACES SHALL BE TRANSITIONED TO THE FRONT FACE BETWEEN THE TWO LINE POSTS IMMEDIATELY PRECEDING THE ANCHOR POST.



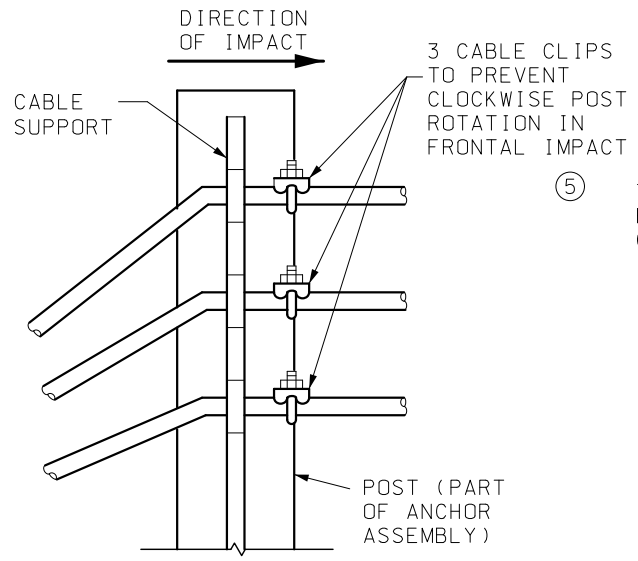
SECTION A-A ANCHOR POST



DETAIL A ANCHOR BRACKET
DETAIL FROM SHEET 1.



CABLE SUPPORT



DETAIL B CABLE CLIPS
DETAIL FROM SHEET 1.

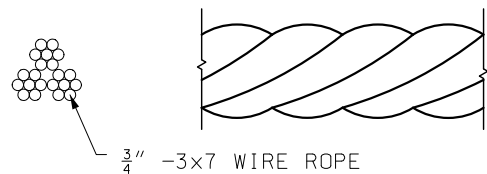
- FOR DETAILS ② AND ④, SEE SHEET 5 OF 7.
- FOR DETAIL ⑤ AND ⑦, SEE SHEET 6 OF 7.

MoDOT MISSOURI HIGHWAYS AND TRANSPORTATION COMMISSION
105 WEST CAPITOL JEFFERSON CITY, MO 65102
1-888-ASK-MODOT (1-888-275-6636)

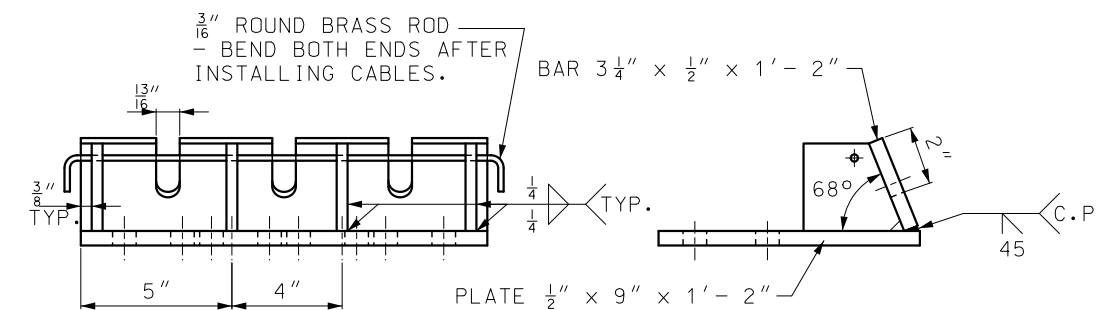
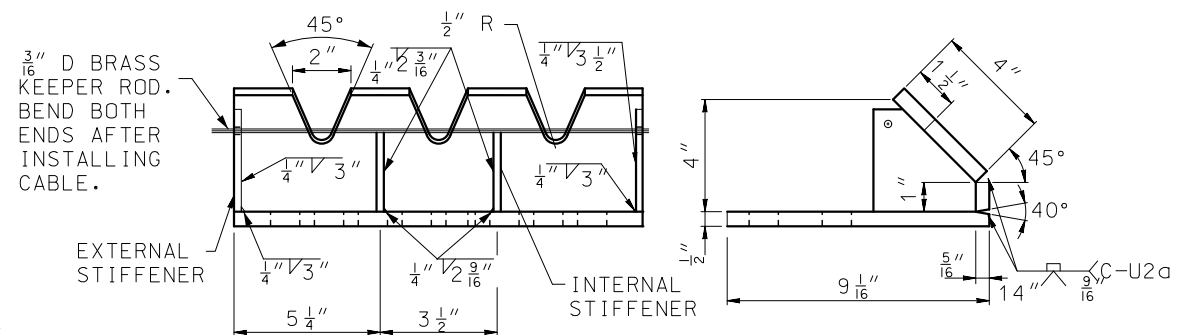
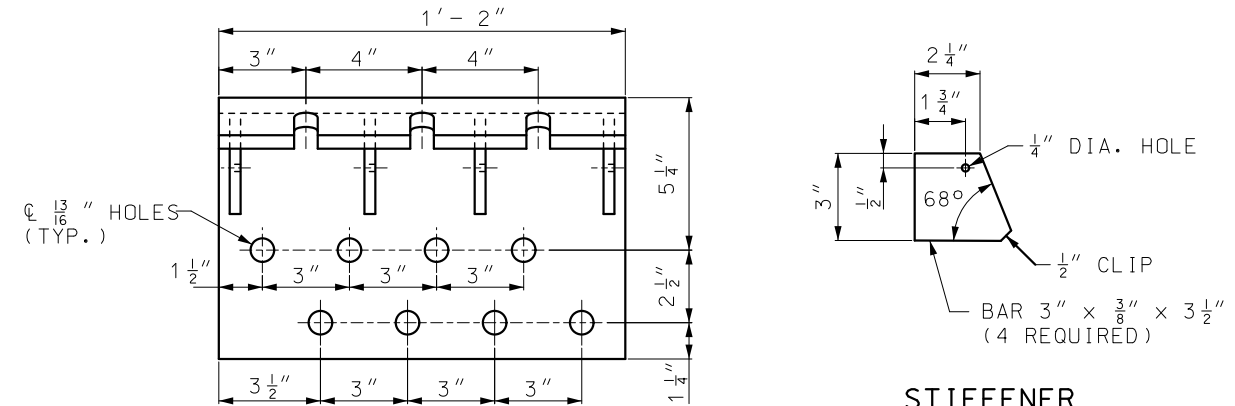
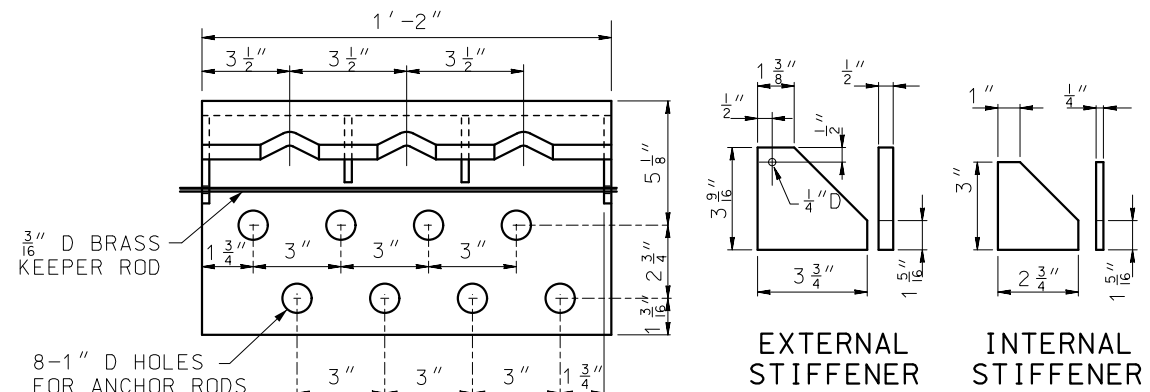
STATE OF MISSOURI
TRAVIS D. KOESTNER
NUMBER PE-30042
PROFESSIONAL ENGINEER
THIS SHEET HAS BEEN SIGNED, SEALED AND DATED ELECTRONICALLY.

THREE-STRAND GUARD CABLE

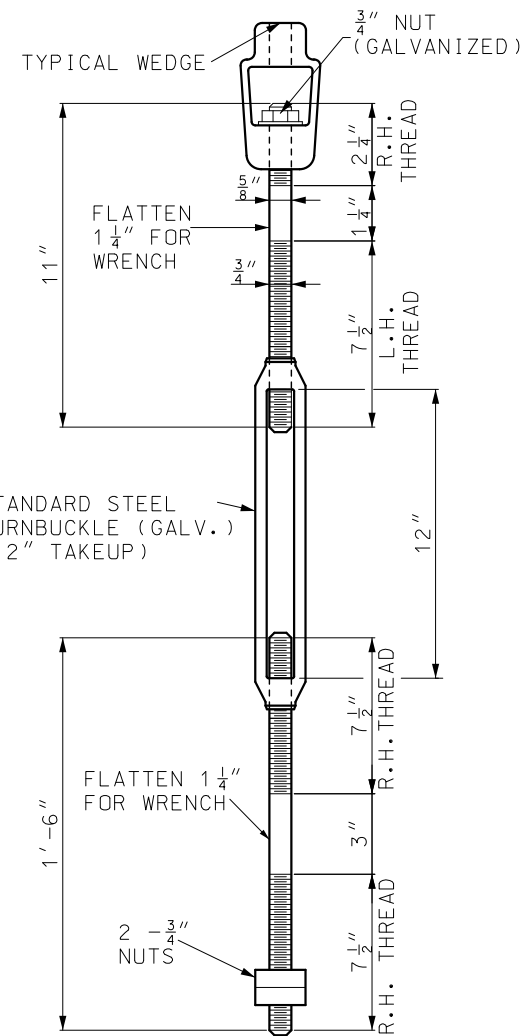
DATE EFFECTIVE: 04/01/2021	606.41M	SHEET NO. 4 OF 7
DATE PREPARED: 1/27/2021		



① WIRE ROPE



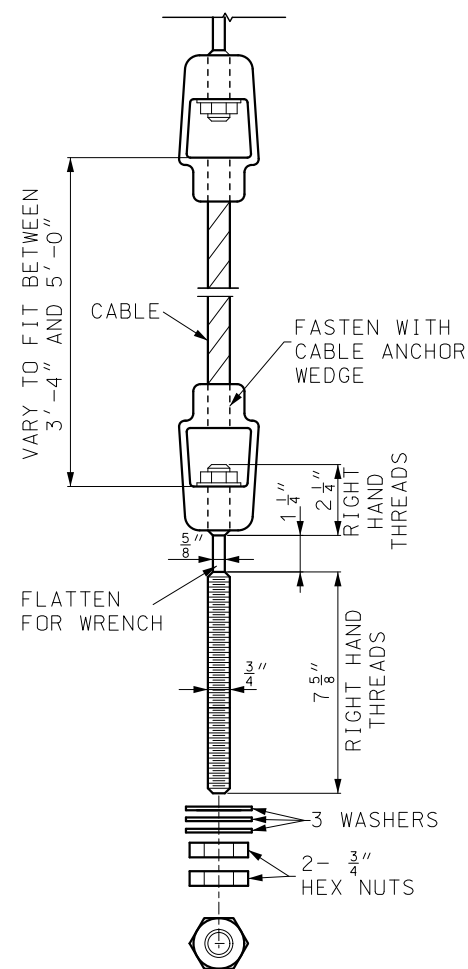
GUARD CABLE TO GUARDRAIL TRANSITION



TURNBUCKLE CABLE END ASSEMBLY

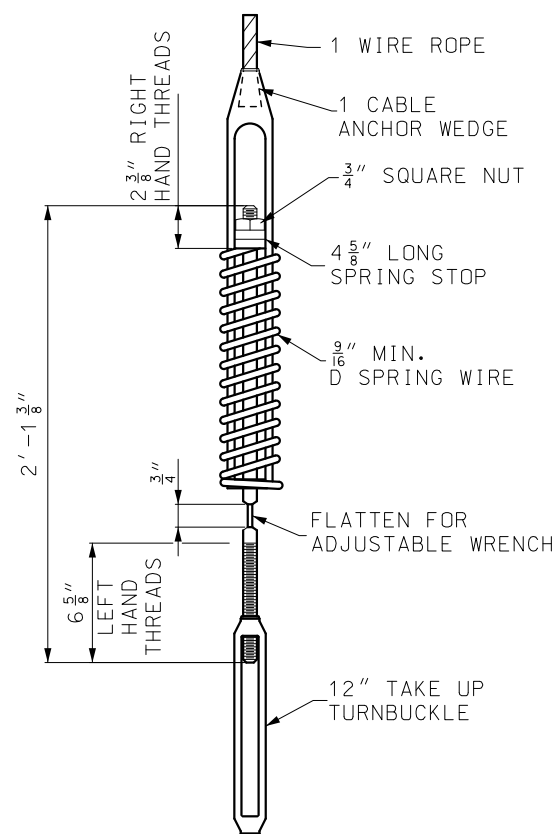
② CABLE END FITTINGS

MEDIAN AND ROADSIDE CABLE



CABLE END FITTING

④ ANCHOR BRACKET



③ COMPENSATING CABLE END ASSEMBLY

GENERAL NOTES:

AT ALL LOCATIONS WHERE THE CABLE IS CONNECTED TO A CABLE SOCKET WITH A WEDGE TYPE CONNECTION, ONE WIRE OF THE WIRE ROPE SHALL BE CRIMPED OVER THE BASE OF THE WEDGE TO HOLD IT FIRMLY IN PLACE.

THE SPECIFICATIONS AND DIMENSIONS OF ALL HARDWARE AND FITTINGS SHALL COMPLY WITH AASHTO-AGC-ARTBA JOINT TASK FORCE 13 REPORT, A GUIDE TO STANDARDIZED HIGHWAY BARRIER HARDWARE.

MoDOT MISSOURI HIGHWAYS AND TRANSPORTATION COMMISSION

105 WEST CAPITOL
JEFFERSON CITY, MO 65102
1-888-ASK-MODOT (1-888-275-6636)

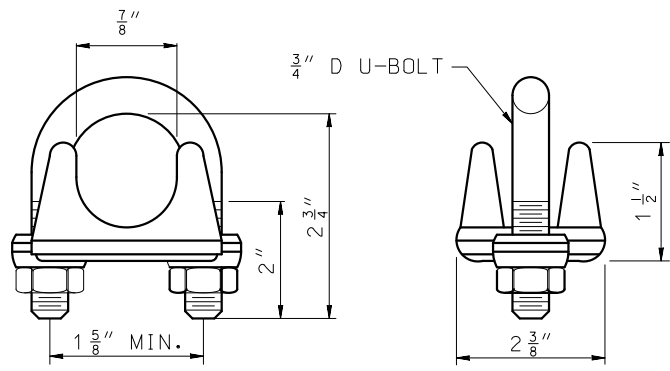
STATE OF MISSOURI
TRAVIS D. KOESTNER
NUMBER PE-30042
PROFESSIONAL ENGINEER

THIS SHEET HAS BEEN SIGNED, SEALED AND DATED ELECTRONICALLY.

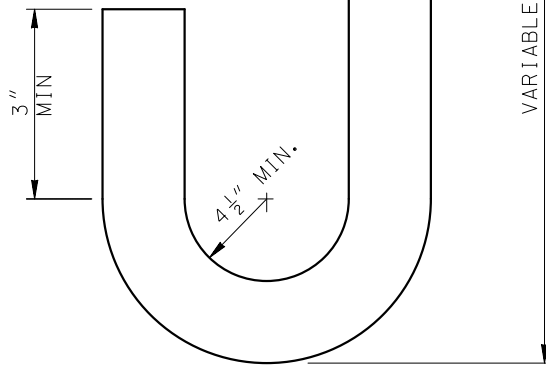
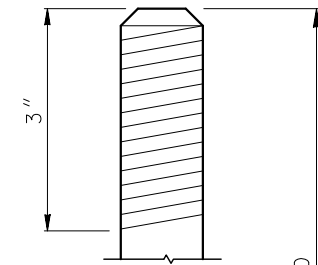
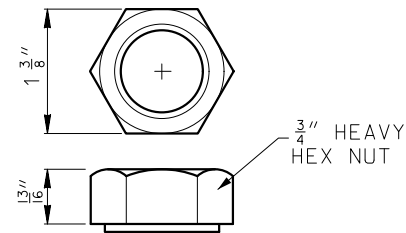
THREE-STRAND GUARD CABLE

DATE EFFECTIVE: 04/01/2021	606.41M	SHEET NO. 5 OF 7
DATE PREPARED: 1/27/2021		

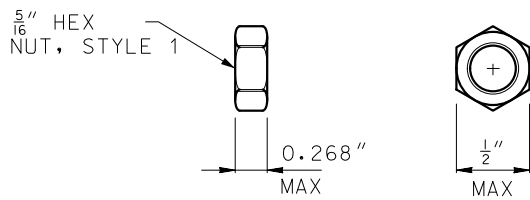
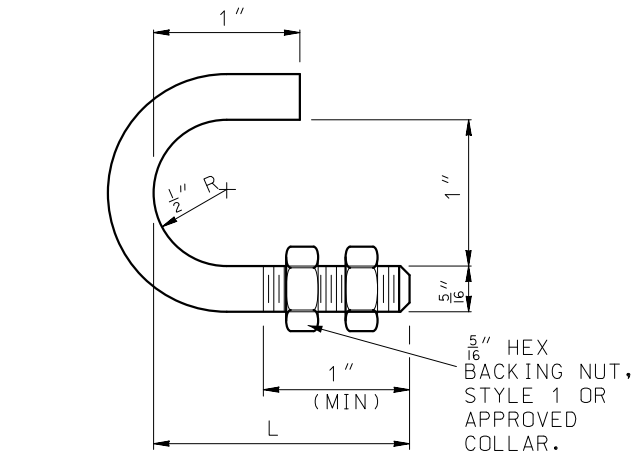
IF A SEAL IS PRESENT ON THIS SHEET IT HAS BEEN ELECTRONICALLY SEALED AND DATED.



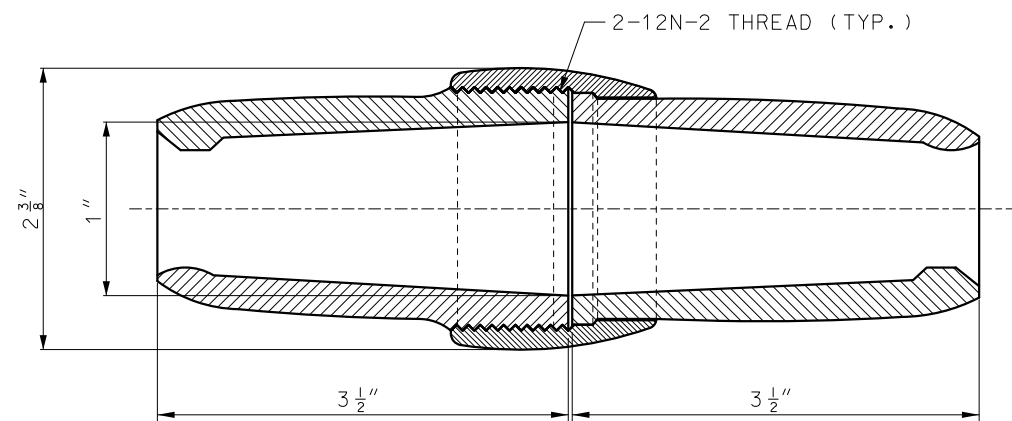
⑤ U-BOLT CABLE CLIPS



⑦ 25" HOOKED ANCHOR BOLT AND NUT

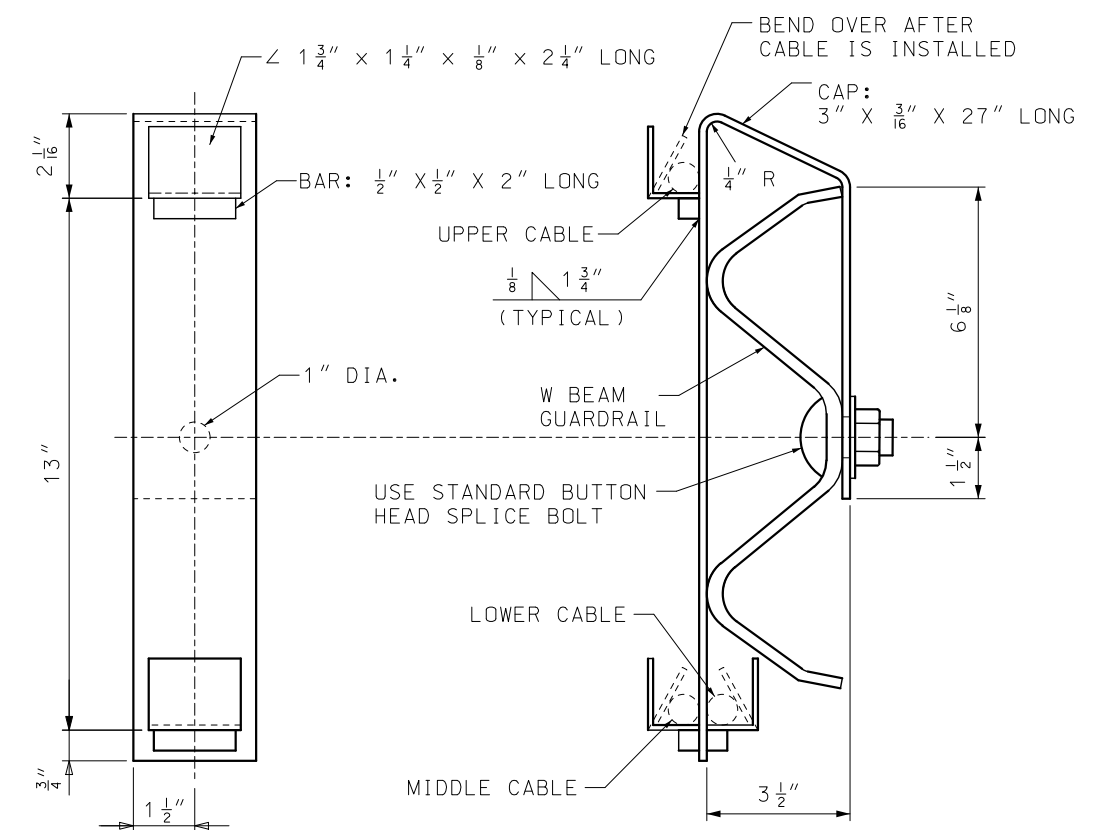


⑥ CABLE HOOK BOLT AND NUT

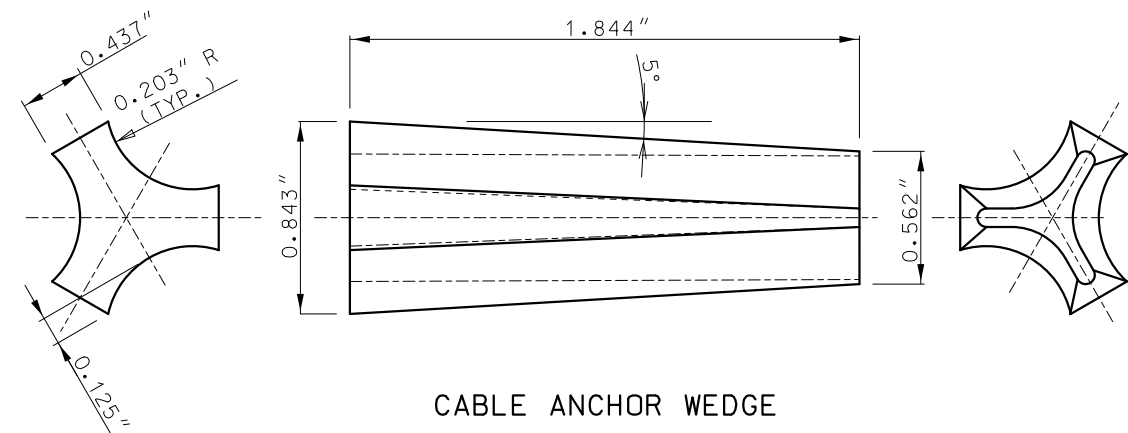


NOTE:
FITTING SPLICE SHALL DEVELOP THE FULL
STRENGTH OF THE CABLE (25,000 LB.).



CABLE SPLICE



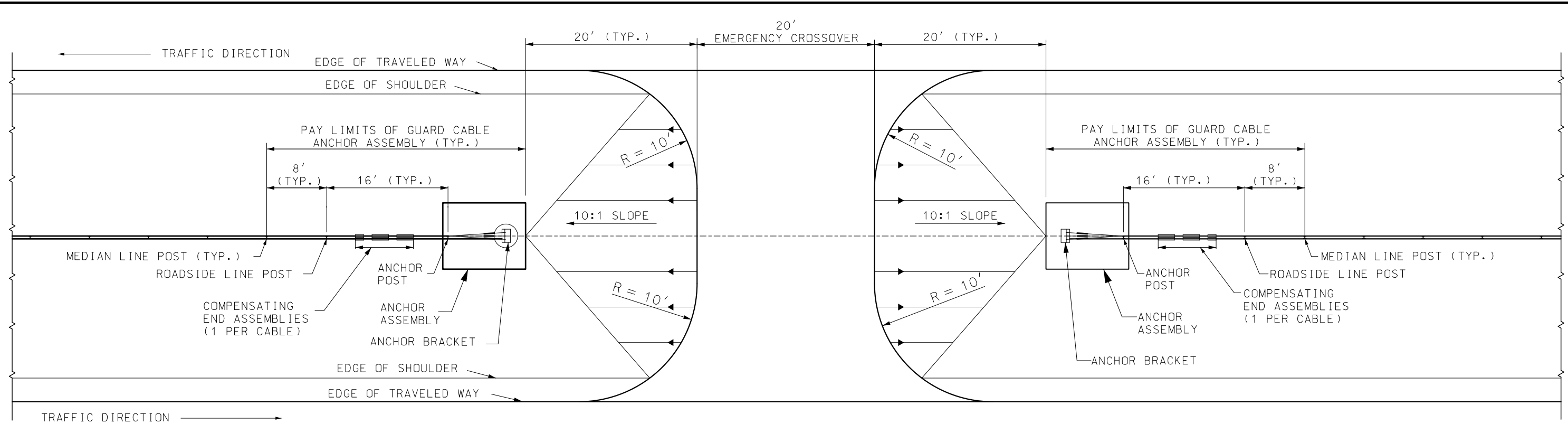
⑧ CABLE TRANSITION BRACKET



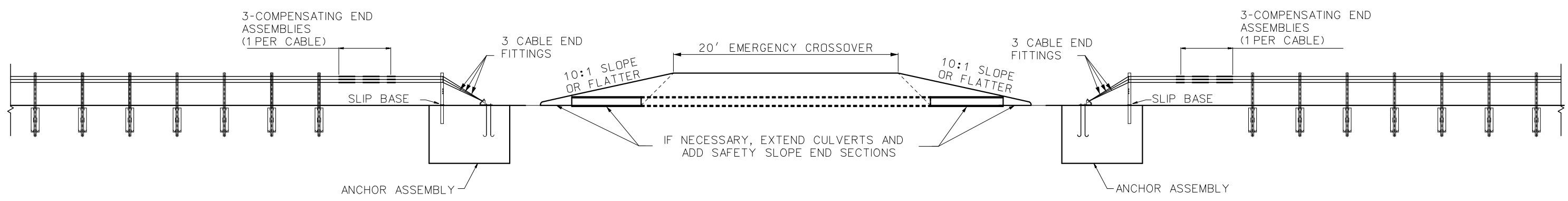
CABLE ANCHOR WEDGE

 MISSOURI HIGHWAYS AND TRANSPORTATION COMMISSION 105 WEST CAPITOL JEFFERSON CITY, MO 65102 1-888-ASK-MODOT (1-888-275-6636)	
	THREE-STRAND GUARD CABLE
DATE EFFECTIVE: 04/01/2021 DATE PREPARED: 1/27/2021	606.41M
SHEET NO. 6 OF 7	

IF A SEAL IS PRESENT ON THIS SHEET IT HAS BEEN ELECTRONICALLY SEALED AND DATED.



PLAN



PROFILE

	MISSOURI HIGHWAYS AND TRANSPORTATION COMMISSION 105 WEST CAPITOL JEFFERSON CITY, MO 65102 1-888-ASK-MODOT (1-888-275-6636)	
	<p style="text-align: center;">THREE-STRAND GUARD CABLE TRANSITION AT MEDIAN OPENING</p>	
	DATE EFFECTIVE: 04/01/2021 DATE PREPARED: 1/27/2021	SHEET NO. 606.41M 7 OF 7

IF A SEAL IS PRESENT ON THIS SHEET IT HAS BEEN ELECTRONICALLY SEALED AND DATED.