

FEDERAL PROJECT NOS. CMAQ-STP-BUILD-5617(602)
BPS PROJECT NO. 2020-40-012

CITY OF SAINT LOUIS

DEPARTMENT OF THE PRESIDENT, BOARD OF PUBLIC SERVICE

ADDENDUM NO. 2

TO

PLANS AND SPECIFICATIONS

FOR

20TH STREET MOBILITY IMPROVEMENTS

ST. LOUIS, MISSOURI

DATE: **9/3/24**

LETTING NUMBER: **8776**

The following changes and additions shall be made in the specifications and bid form. The cost thereof shall be included in the proposals submitted by the bidders.

Receipt of this addendum must be acknowledged on Bid Express.

ADDENDUM TO THE PROJECT SPECIFICATIONS

- **"JSP UUUU. Light Poles and Luminaires"**: Replace JSP UUUU in its entirety with the attached JSP UUUU. JSP has been revised with updated catalog numbers.

ADDENDUM TO THE PROJECT PLANS

Replace the following sheets with the revised sheets attached to this addendum:

- **Sheet C2.2**: Image on the plan sheet has been revised to better represent the light poles.
- **Sheet LI-47**: Corrected catalog number of the light fixture.
- **Sheet C9.3**: Stationing and elevations at the northeast corner of the 20th/Locust intersection have been revised.

ADDENDUM TO THE ITEMIZED BID FORM

N/A

QUESTIONS & ANSWERS

Q: JSP UUUU list different light poles and luminaires from what is shown on the plans.

A: The plans and JSP UUUU have been revised to show the correct catalog numbers of poles and light fixtures. There are no revisions to the bid quantities.

Attachments:

Revised JSP UUUU - Light Poles and Luminaires (1 page)
Revised Plan Sheets C2.2, LI-47, C9.3 (3 pages)
Pre-bid Meeting Minutes (2 pages)
Pre-bid Sign-in Sheet (1 page)

END OF ADDENDUM NO. 2

UUUU. LIGHT POLES & LUMINAIRES

PART 1 - DESCRIPTION

This provision covers the items lists below, consisting of furnishing and installing light poles, luminaires and specialized assemblies as indicated in the lighting plans.

- City Roadway Light Pole: Pole shall be Stress Crete pole in Granitoid, 33' with 5' embedded base. Catalog No: SL-E330-APO-G-FC-C/W 166S-S-6'
- Roadway Light: GE Luminaire - ERL1H12E540D GRAY LG
- Pedestrian Light: K118-P4GR-III-75 (SSL)-1030480KFSL2-SST-4K
- Pedestrian Light Pole: KLC13.5-G-E61 S/F KFSL2

PART 2 - MATERIALS

All materials and work shall conform to Section 901 of the Missouri Standard Specifications for Highway Construction, current edition, and the City of St. Louis Traffic Division Standard and Specifications.

PART 3 – METHOD OF MEASUREMENT

Measurement for these work items shall be as indicated below:

Pedestrian Light Pole & Luminaire

City Roadway Light Pole

City LED Fixture

PART 4 - PAYMENT

Payment will be considered full compensation for the excavation, labor, mounting hardware, and material necessary for installation and full functionality of these items and shall be included under the contract unit price for each item.

END OF JOB SPECIAL PROVISION LIGHT
POLES & LUMINAIRES

NOT TO SCALE

CMAQ-STP-BUILD
5617(602)



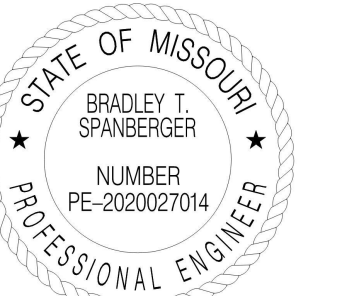
CITY OF SAINT LOUIS
MISSOURI
DEPARTMENT OF THE PRESIDENT
BOARD OF PUBLIC SERVICE
ROOM 301 CITY HALL
ST. LOUIS, MISSOURI 63103
PHONE (314) 622-3535
FAX (314) 622-4028

JAROSLAW CZERNIKIEWICZ, P.E.
Chief of Design Division



© Copyright CMT, Inc.
CRAWFORD, MURPHY & TILLY, INC.
ONE MEMORIAL DRIVE, SUITE 500
ST. LOUIS, MO 63102 (314) 436-5500
ENGINEERING CORPORATION - 000631

The professional whose personal seal and/or signature appears on this sheet assumes responsibility only for what appears on this sheet and disclaims (Pursuant to Section 327.411 RSMo) any responsibilities for all other drawings, supplemental drawings, plots, surveys, revisions, specifications, estimates, reports or other documents or instruments not sealed by the undersigned professional relating to or intended to be used for any part or parts of the project to which this sheet refers.



Seal *Bradley T. Spanberger*

Name Bradley T. Spanberger - Civil
MO PE-2020027014

Lic. No.

Revision No. Date

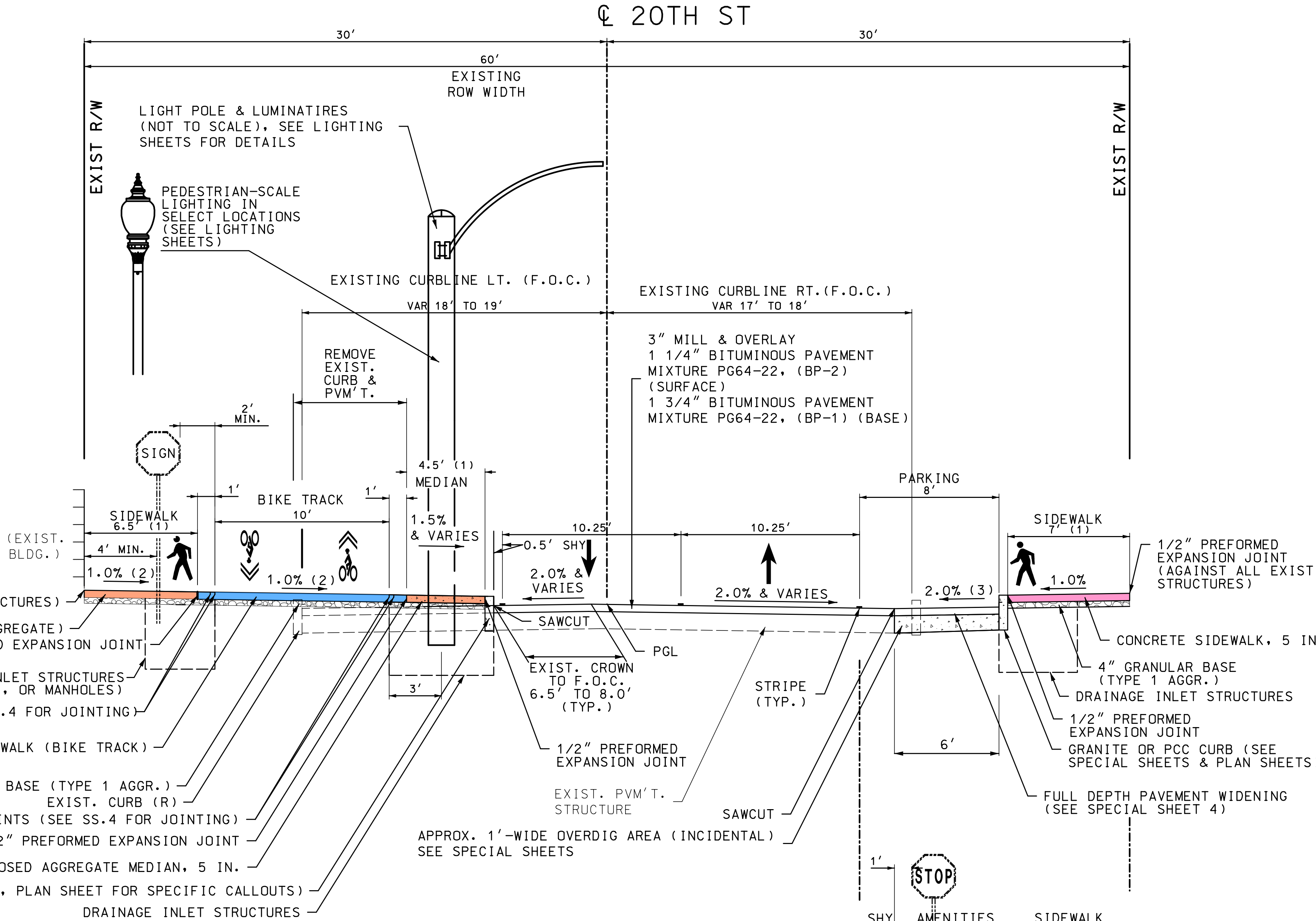
20TH STREET MOBILITY IMPROVEMENTS
CITY OF SAINT LOUIS, MISSOURI

PAY ITEM SHADING LEGEND

- CONCRETE SIDEWALK, 5 IN. [...USING BIKE TRACK JOINTING]
- CONCRETE SIDEWALK, 5 IN. [...USING SIDEWALK JOINTING]
- CONCRETE SIDEWALK, 5 IN. (EXPOSED AGGREGATE) [...USING SIDEWALK JOINTING]
- EXPOSED AGGREGATE MEDIAN, 5 IN. [...USING SIDEWALK JOINTING]

TYPICAL SECTION 20TH STREET

DELMAR BOULEVARD TO MADISON STREET (AS SHOWN)
MADISON STREET TO ST. LOUIS AVENUE (REFLECTED)



- (1) WIDTH VARIES AT INTERSECTIONS AND IN SELECT LOCATIONS. SEE PLAN SHEETS AND INTERSECTION-DETAIL SHEETS. SLOPE MAY BE ADJUSTED UP TO A MAXIMUM OF 15%, AS APPROVED BY THE ENGINEER, TO TIE INTO LOGICAL TERMINII SUCH AS INTERSECTING SIDEWALKS, STEPS, BUSINESSES, ETC. ANY SLOPE THAT WOULD CREATE CONCAVE SURFACE BETWEEN THE SIDEWALK AND MEDIAN MUST BE APPROVED BY THE ENGINEER, UNLESS OTHERWISE STATED IN THE PLANS.
- (2) MEDIAN, CONCRETE BANDS, AND SIDEWALK SLOPES SHALL BE -1.5% (SLOPED TO DRAIN AWAY FROM ROADWAY) FROM APPROXIMATE STA. 83+25 TO STA. 84+00, WITH THE TRANSITION FROM THE STANDARD +1.0% SLOPES TO 1.5% SLOPES STARTING BOTH AT THE ALLEY SOUTH OF PARCEL 94, AND APPROXIMATELY 5' NORTH OF STA. 84 (I.E. BUILDING CORNER). THESE SLOPES SHALL BE CONSTRUCTED IN A WAY THAT AVOIDS THE POSSIBILITY OF WATER TO FLOW DIRECTLY TOWARDS THE BUILDING OR BASEMENT WINDOWS. MEDIAN SLOPE SHALL BE FIELD-ADJUSTED UP TO A MAXIMUM OF -10% IN FRONT OF PARCEL 94 PARKING AREA TO CREATE A "FLUSH" TIE-IN ON THE BACK OF SIDEWALK.
- (3) PARKING LANES SHALL BE SLOPED OPPOSITE OF TYPICAL SECTION (AS SHOWN ABOVE) TO DRAIN INTO DRAINAGE STRUCTURES AT CERTAIN LOCATIONS. SEE LIST BELOW:

+2.0% TO -1.5%:	STA. 45+52.96 TO STA. 45+70.51	-2.0% TO +2.0%:	STA. 61+72.90 TO STA. 61+92.90
+2.0% TO -2.0%:	STA. 49+32.42 TO STA. 49+52.42	+2.0% TO -2.0%:	STA. 62+62.74 TO STA. 62+82.74
-2.0% TO -2.0%:	STA. 49+52.42 TO STA. 49+84.52	-2.0% TO -2.0%:	STA. 62+82.74 TO STA. 62+91.74
-2.0% TO +2.0%:	STA. 49+84.52 TO STA. 50+04.52	-2.0% TO +2.0%:	STA. 62+91.74 TO STA. 63+11.74
+2.0% TO -2.0%:	STA. 54+10.50 TO STA. 54+30.50	+2.0% TO -2.0%:	STA. 63+83.63 TO STA. 64+03.63
-2.0% TO -2.0%:	STA. 54+30.50 TO STA. 54+34.50	-2.0% TO -2.0%:	STA. 64+03.63 TO STA. 64+07.63
-2.0% TO +2.0%:	STA. 54+34.50 TO STA. 54+54.50	+2.0% TO -2.0%:	STA. 64+07.63 TO STA. 64+27.63
+2.0% TO -2.0%:	STA. 58+74.14 TO STA. 58+94.14	-2.0% TO -2.0%:	STA. 82+64.62 TO STA. 82+84.62
-2.0% TO -2.0%:	STA. 58+94.14 TO STA. 59+03.14	-2.0% TO +2.0%:	STA. 82+84.62 TO STA. 83+04.62
-2.0% TO +2.0%:	STA. 59+03.14 TO STA. 59+23.14	+2.0% TO -2.0%:	STA. 89+49.54 TO STA. 89+69.54
+2.0% TO -2.0%:	STA. 61+43.90 TO STA. 61+63.90	-2.0% TO +2.0%:	STA. 89+69.54 TO STA. 89+89.54
-2.0% TO -2.0%:	STA. 61+63.90 TO STA. 61+72.90		

PAY ITEM SHADING LEGEND (OPPOSITE SIDE OF BIKE TRACK)

- CONCRETE SIDEWALK, 5 IN.
- EXPOSED AGGREGATE MEDIAN, 5 IN.

AT INTERSECTIONS (BUMP-OUTS)

3B

NO PARKING

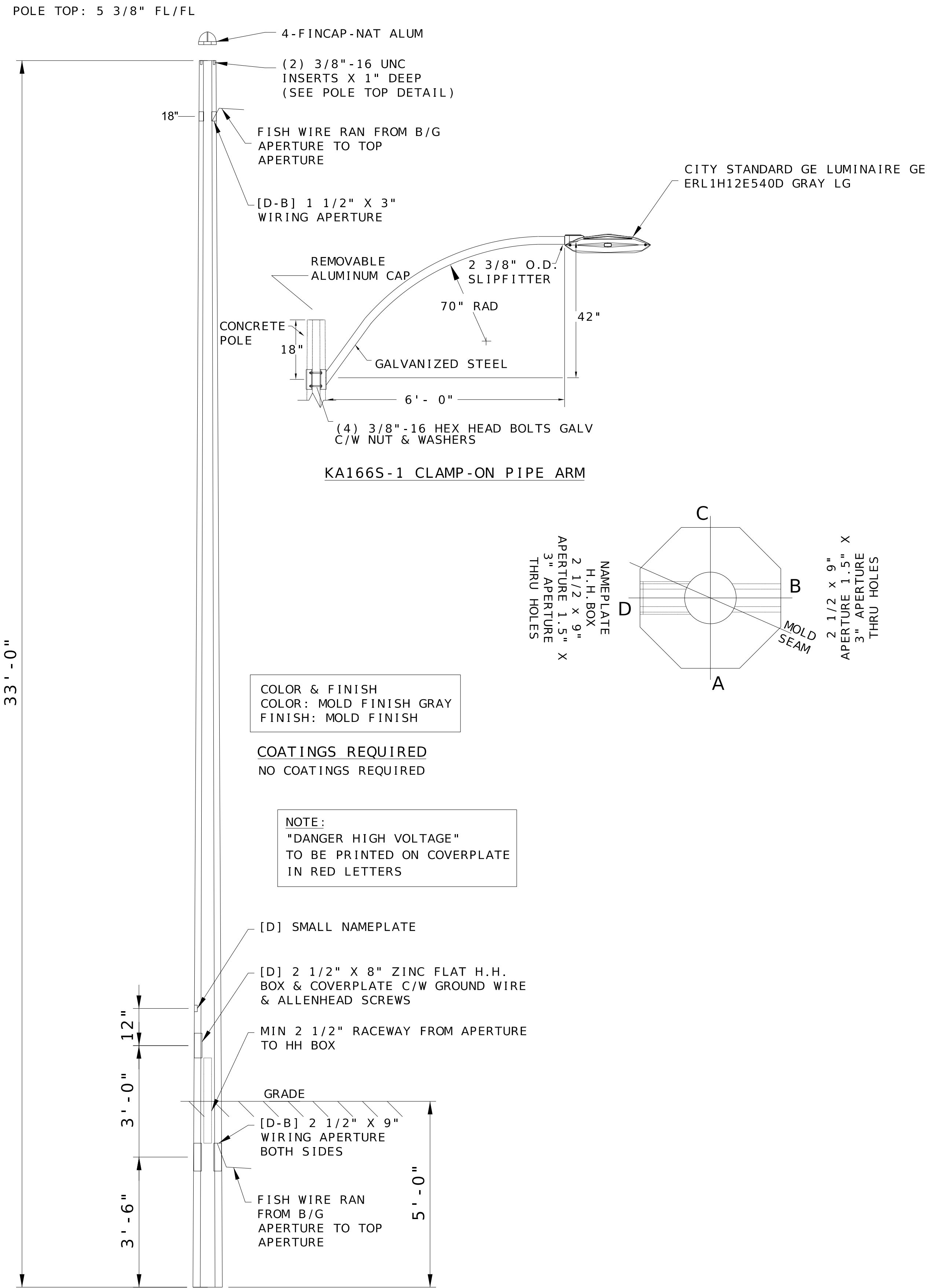
20TH STREET - OLIVE BOULEVARD TO ST. LOUIS AVENUE

SHEET TITLE
TYPICAL SECTIONS 2 [SHEET]

SHEET NUMBER
C2.2

Date
09/19/2023

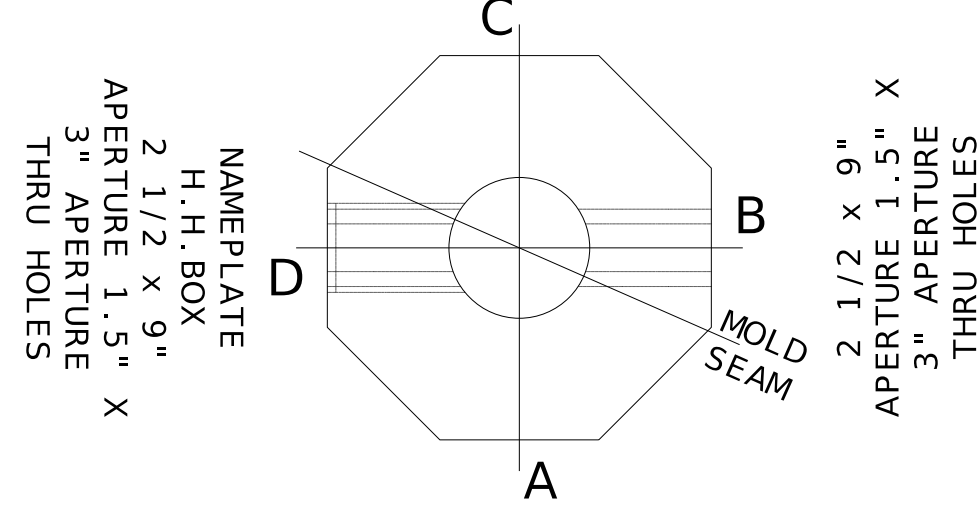
CMT JOB NO. 21-0-47901.00



COLOR & FINISH
 COLOR: MOLD FINISH GRAY
 FINISH: MOLD FINISH

COATINGS REQUIRED
 NO COATINGS REQUIRED

NOTE:
 "DANGER HIGH VOLTAGE"
 TO BE PRINTED ON COVERPLATE
 IN RED LETTERS



STREET LIGHT POLE DETAILS

CMAQ-STP-BUILD
 5617(602)

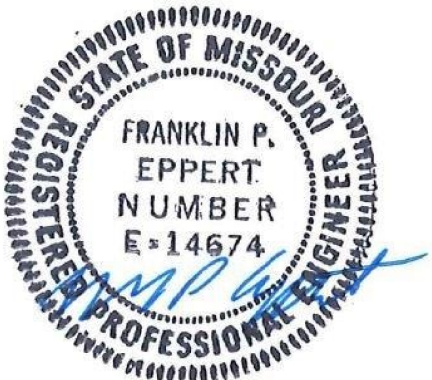


DEPARTMENT OF THE PRESIDENT
 BOARD OF PUBLIC SERVICE
 ROOM 301 CITY HALL
 ST. LOUIS, MISSOURI 63103
 PHONE (314) 622-3535
 FAX (314) 622-4028

JAROSLAW CZERNIKIEWICZ, P.E.
 Chief of Design Division

4140 Lindell Boulevard
 St. Louis, MO 63108
 Ph: 314-454-0222
 Fax: 314-454-1235
 COA E-1501 / LS-365
 www.abnacorp.com

The professional whose personal seal and/or signature appears on this sheet assumes responsibility only for what appears on this sheet and disclaims (Pursuant to Section 327.411 RSMo) any responsibilities for all other drawings, supplemental drawings, plots, surveys, revisions, specifications, estimates, reports or other documents or instruments not sealed by the undersigned professional relating to or intended to be used for any part or parts of the project to which this sheet refers.



Name: FRANKLIN P. EPPERT
 Lic. No.: E-14674

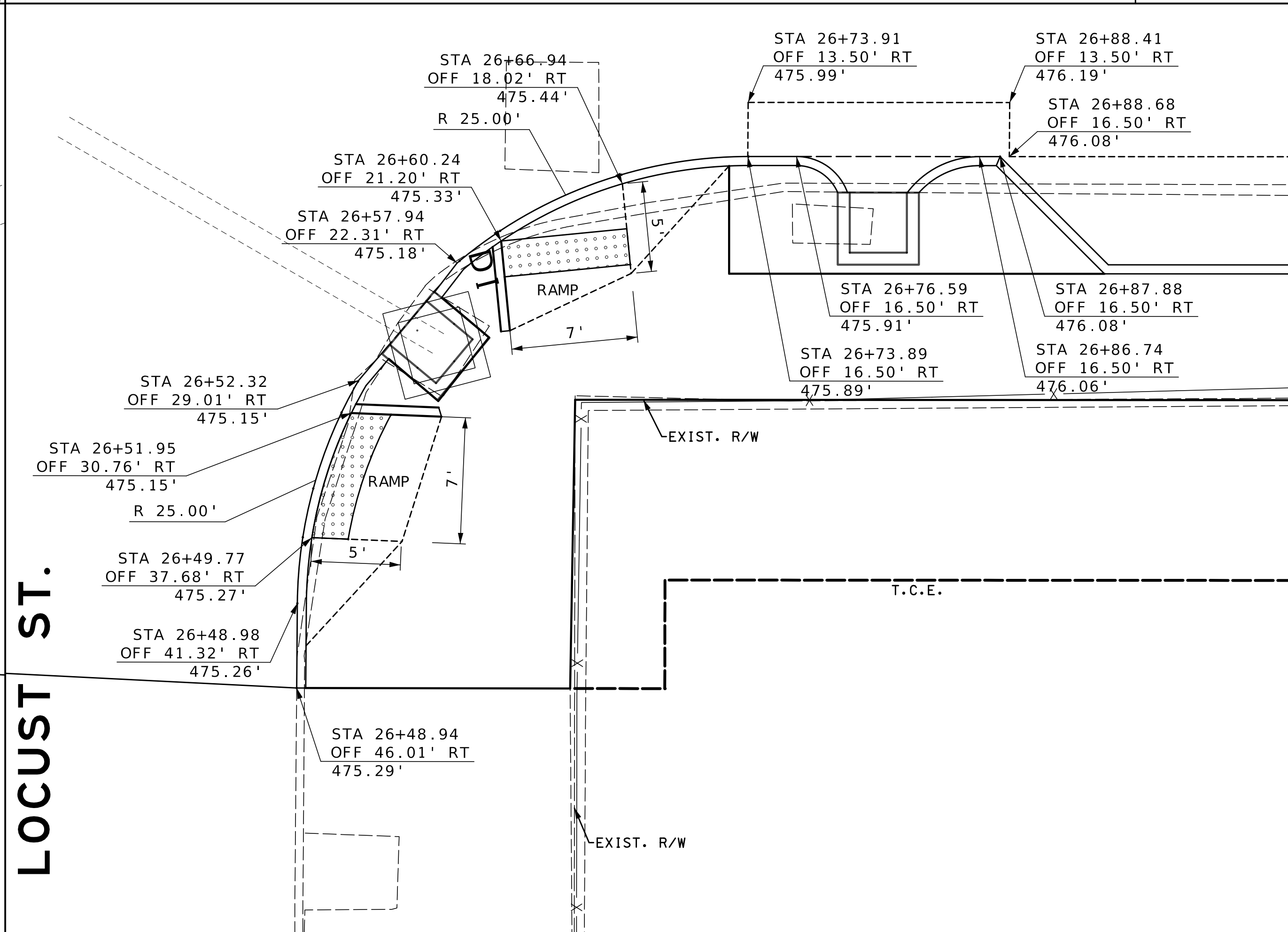
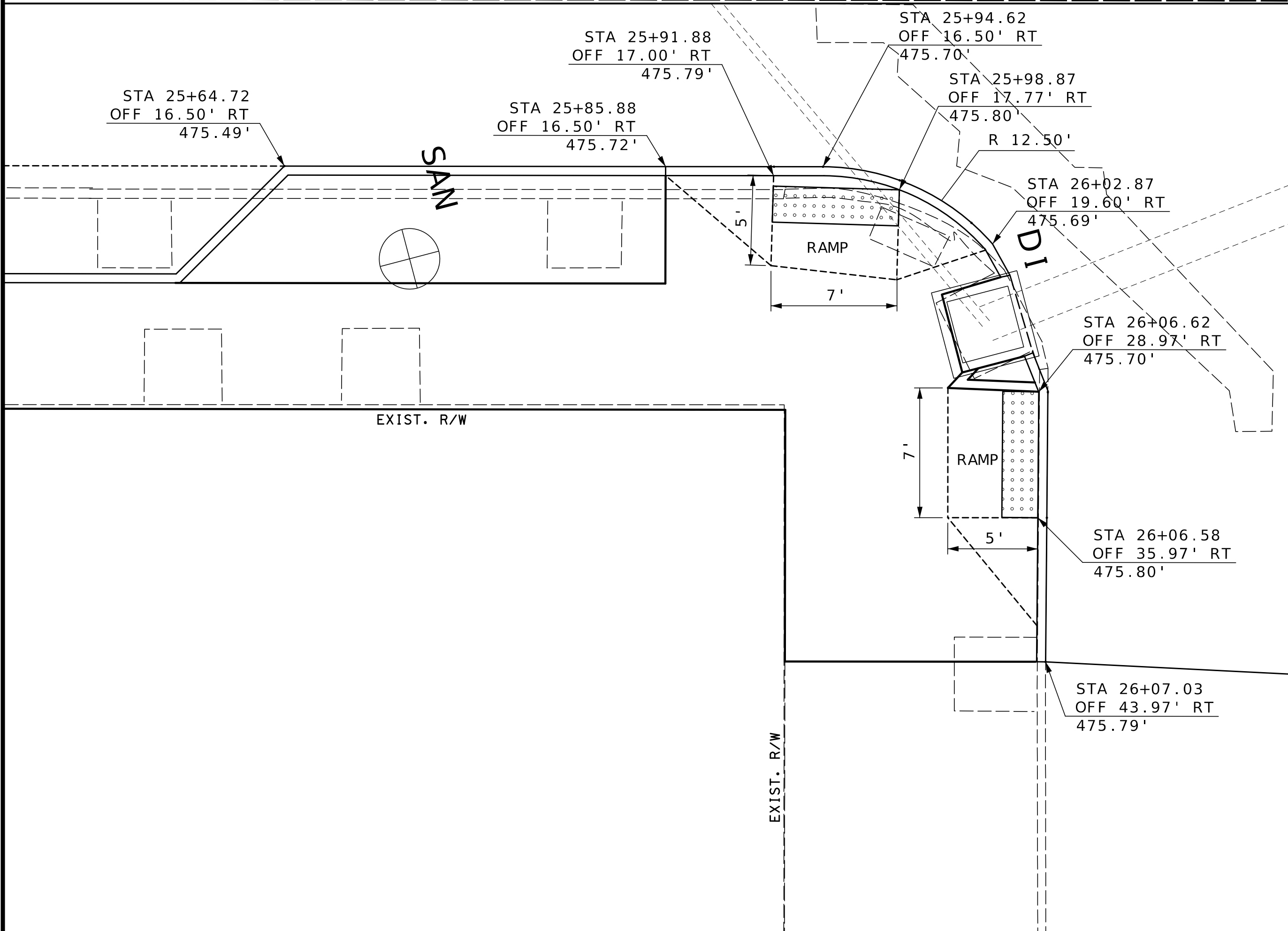
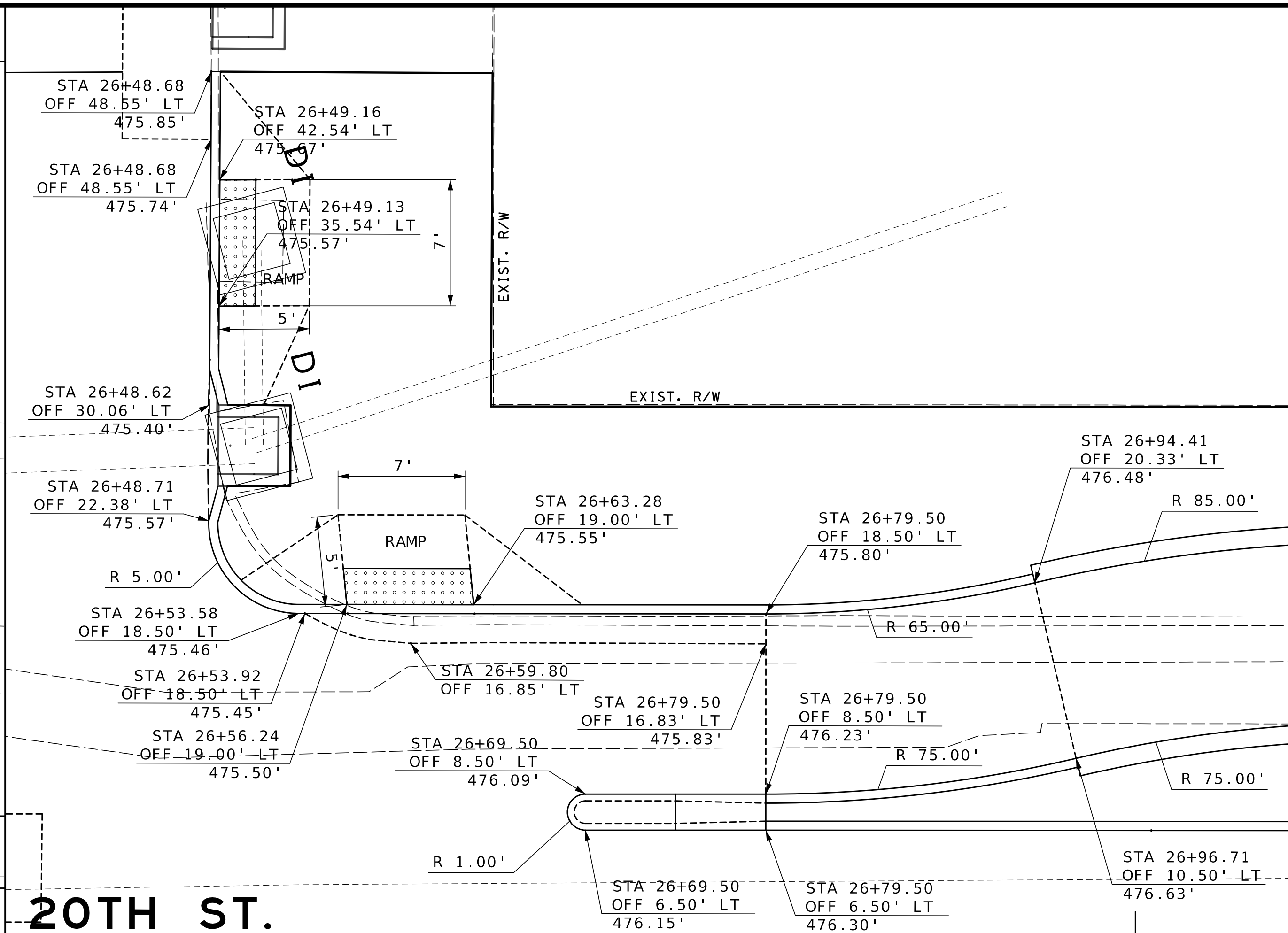
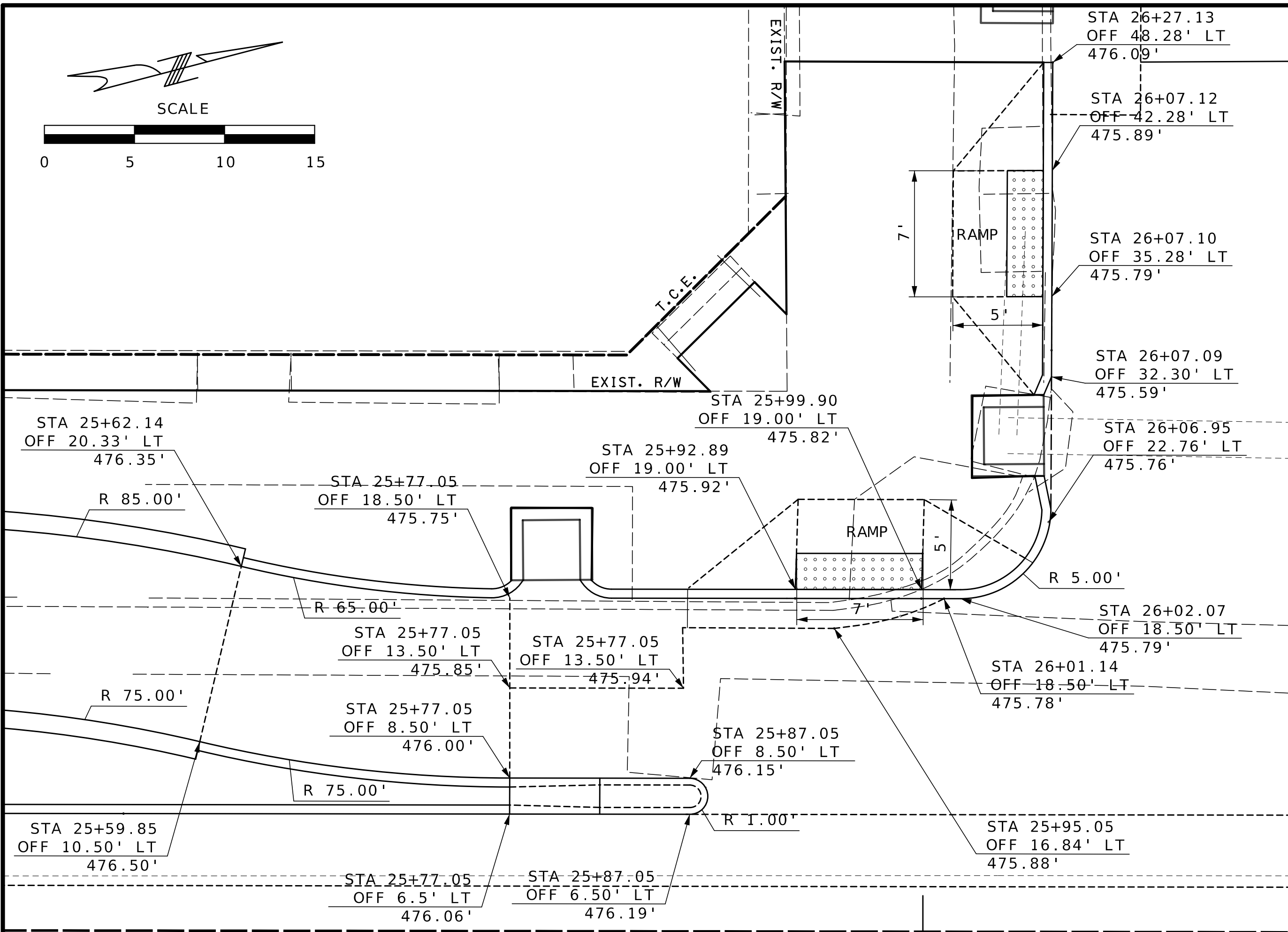
Revision No. _____ Date _____

**20TH STREET
 MOBILITY
 IMPROVEMENTS**
 CITY OF SAINT LOUIS, MISSOURI

SHEET TITLE
LIGHT POLE DETAILS

SHEET NUMBER
LI - 48

08/28/2024
 Date



CMAQ-STP-BUILD
5617(602)

CITY OF SAINT LOUIS
MISSOURI

DEPARTMENT OF THE PRESIDENT
BOARD OF PUBLIC SERVICE
ROOM 301 CITY HALL
ST. LOUIS, MISSOURI 63103
PHONE (314) 622-3535
FAX (314) 622-4028

JAROSLAW CZERNIKIEWICZ, P.E.
Chief of Design Division

CMT

© Copyright CMT, Inc.
CRAWFORD, MURPHY & TILLY, INC.
ONE MEMORIAL DRIVE, SUITE 500
ST. LOUIS, MO 63102 (314) 436-5500
ENGINEERING CORPORATION - 000631

The professional whose personal seal and/or signature appears on this sheet assumes responsibility only for what appears on this sheet and disclaims (Pursuant to Section 327.411 RSMo) any responsibilities for all other drawings, supplemental drawings, plots, surveys, revisions, specifications, estimates, reports or other documents or instruments not sealed by the undersigned professional relating to or intended to be used for any part or parts of the project to which this sheet refers.

Seal *Bradley T. Spanberger*
08/28/2024 3:00:58 PM
Bradley T. Spanberger - Civil
MO PE-2020027014
Name
Lic. No.

Revision No.	Date

20TH STREET MOBILITY IMPROVEMENTS
CITY OF SAINT LOUIS, MISSOURI

SHEET TITLE
INTERSECTION DETAILS 3 - LOCUST ST [SHEET]

SHEET NUMBER
C9.3
Date
09/19/2023

IF A SEAL IS PRESENT ON THIS SHEET IT HAS BEEN ELECTRONICALLY SEALED AND DATED.

Pre-Bid Meeting Minutes, 8/29/24

20th Street Mobility Improvements

Federal Project # CMAQ-STP-BUILD-5617(602)

- The project will reconstruct the 20th Street corridor, from Market Street to St. Louis Avenue, a distance of ~1.5 miles.
- Bids are due by Tuesday, September 17, 2024, at 1:45 pm. Bids must be submitted electronically through Bid Express. The City will not accept paper bids, and any paper bid received will be considered non-responsive and rejected. The link for the City's home page on Bid Express is provided in the project specifications. Contractors will need to create a vender account and must have a Digital ID. There is a **\$40 charge** from Bid Express to contractors for bidding on this project.
- Bids will be publicly read at the start of the Board of Public Service weekly Board meeting. The zoom link for the Board meeting is posted on Bid Express.
- Contractors must have a completed Contractor's questionnaire on file with the Missouri Highway & Transportation Commission at least 7 days prior to the bid opening date.
- Bidders must submit a bid deposit equal to 5% of the total bid. Bid deposits can either be submitted electronically on Bid Express, or delivered directly to Helen Bryant in Room 301 of City Hall. If not submitted electronically, the bid deposit must be received before the time of the bid opening, and a scanned copy of the bid deposit must be uploaded to Bid Express.
- There are several affidavits that are due at the time of bidding and must be uploaded to Bid Express to be considered a responsive bid. Those affidavits are all provided in the attachments section of Bid Express. The subcontractor disclosure form and DBE submittal package are due by 4:00 pm on Friday, September 20, and can either be emailed or hand delivered to Helen Bryant.
- This contractor will have 718 calendar days to complete the project. Notice to Proceed is anticipated to be issued ~December 2024 – January 2025. Liquidated damages have been set at \$3,200.00/day for road user costs and \$3,000.00/day for contract administration costs. There is also \$500.00/day for pedestrian impacts if a route is closed for more than 4 weeks.
- This contract requires that all onsite workers be paid prevailing wages. All workers also must have completed the OSHA 10 hours safety training course.
- The DBE goal of this contract is set at 14% of the total contract amount, and the project has one trainee slot for 1,000 hours of On the Job trainee goals.
- Contractors must acknowledge receipt of all addendum issued when submitting bids.
- To submit a question, contractors can either complete the bid inquiry form included in the project specifications and submit the form to Helen Bryant, or contractors may submit a question directly on Bid Express. Any question that requires an addendum to revise the plans, specifications, or bid items must be received no later than 13 days before bids are due, on Wednesday, September 4. A final addendum, if required, will be issued on September 10. Questions may be submitted until the end of the day Friday, September 13, however any question requiring an addendum will not be answered unless it is received by 9/4. Questions

submitted after 9/4 will only be answered if the answer is a simple design clarification. Bid Express will require all bidders to acknowledge having read through all posted Q&A's before submitting a bid.

- The contractor will be responsible for obtaining all necessary permits from the City, MoDOT, and MSD. The contractor will be responsible for paying the permit fees to MSD. There are two MSD permits for this project, the total cost of both permits will be \$21,403.00 (\$19,903.00 & \$1,500.00). There will not be a direct reimbursement for this work, the cost of which will be incidental to the contract.
- This project is subject to the Buy America law, which will be strictly enforced on all iron, steel, and steel coating products.
- The project includes work that will be performed by the Water Department personnel. Their work includes installing/destroying taps, cap existing hydrant control valves, and providing new or refurbished fire hydrants to the Contractor. The Water Dept will invoice the Board of Public Service directly for their costs. There will be no direct reimbursement for any incidental expenses to the contractor related to the scheduling and coordination of the Water Dept's work.
- New fire hydrants must be Buy America compliant. The Water Dept's fire hydrants are compliant, but the Water Dept does not acquire the Buy America certification paperwork except when ordering hydrants for federally-funded projects. When coordinating with the Water Dept, the contractor must inform the Water Dept. that the project is federally funded and to order Buy America hydrants specific for this project.
- Saturday work will be allowed on this project with advanced approval from the Board of Public Service. Sunday work is not allowed on BPS projects except in the case of emergencies and with BPS approval.

Q&A

Q: What is the engineer's estimate of the project?

A: The total estimated cost of the project is ~\$13.5M.

